

# FREIGHT AND LOGISTICS OVERVIEW

FEBRUARY 2021

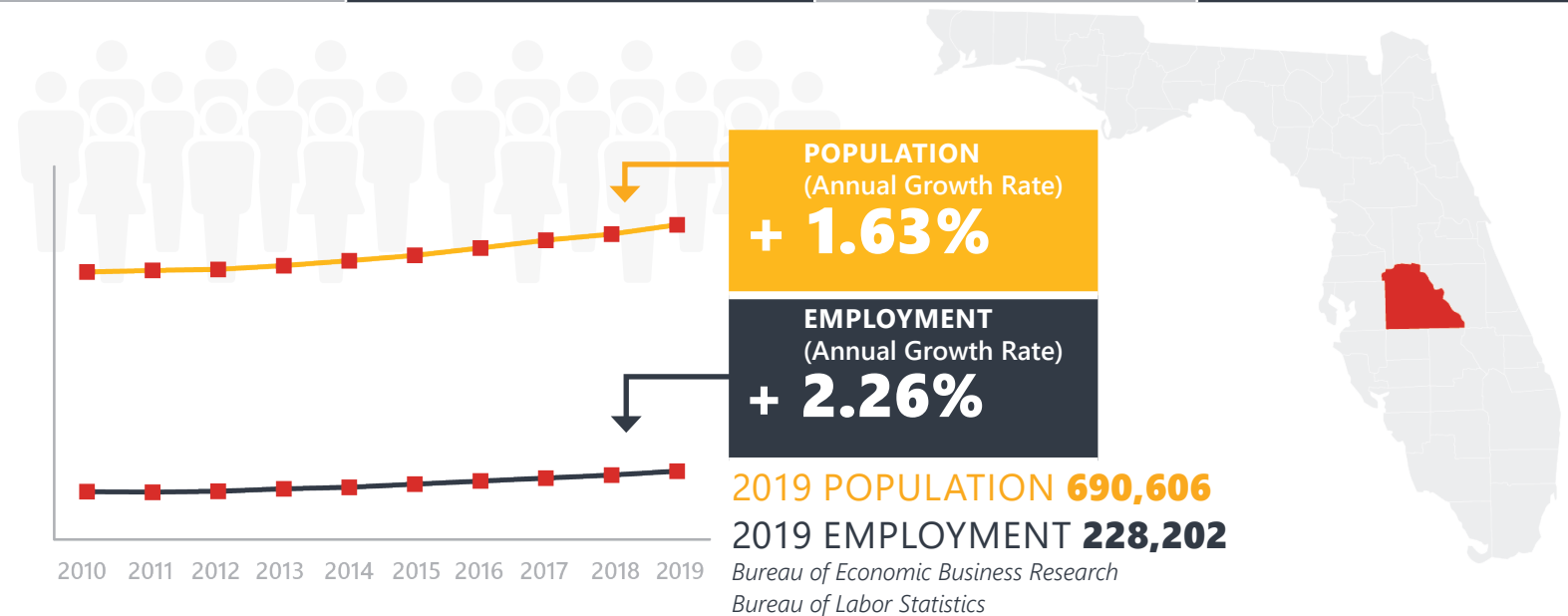
# POLK COUNTY



*Mission: The department will provide a safe transportation system that ensures the mobility of people and goods, enhances economic prosperity, and preserves the quality of our environment and communities.*

# POLK COUNTY HIGHLIGHTS

"THE HEART OF CENTRAL FLORIDA"		AREA (SQ . MILES)	2,010
COUNTY SEAT	BARTOW	LARGEST CITY (SIZE)	LAKELAND



## LARGEST INDUSTRY SECTORS BY EMPLOYMENT (2019)

Office of Economic and Demographic Research



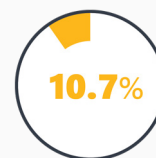
Trade,  
transportation  
& utilities



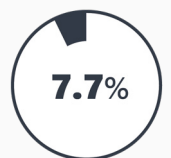
Education &  
health  
services



Professional &  
business  
services



Leisure &  
hospitality



Manufacturing

## FASTEST GROWING INDUSTRIES (2010-2019)

TRADE, TRANSPORTATION, AND UTILITIES	JOBS ADDED	15,764
LEISURE AND HOSPITALITY		8,337
EDUCATION AND HEALTH SERVICES		5,295
PROFESSIONAL AND BUSINESS SERVICES		3,780
CONSTRUCTION		3,723

Bureau of Labor Statistics

## DID YOU KNOW?

Established in Winter Haven (Polk County), Publix is considered to be the largest employee-owned company in the world.

Polk County is a powerhouse in freight and logistics business with multiple warehouses and distribution centers.

Polk County is one of the top citrus producing counties in the state.



# COMMODITY FLOW HIGHLIGHTS



## IMPORTS

## WITHIN COUNTY

## EXPORTS

	2018	2045	2018	2045	2018	2045
Tonnage:	17.10 M	20.89 M	8.63 M	9.10 M	22.44 M	34.13 M
Value:	\$ 15.53 B	\$ 21.41 B	\$ 1.04 B	\$ 1.22 B	\$ 15.16 B	\$ 25.70 B



### TOP COMMODITY by Tonnage, 2018

Nonmetallic Minerals	6,751,157
Clay, Concrete, Glass, Stone	1,507,667
Food or Kindred Products	1,250,910
Petroleum or Coal Products	1,206,836
Chemicals or Allied Products	1,170,681



Nonmetallic Minerals	7,509,536
Chemicals or Allied Products	4,285,172
Food or Kindred Products	2,299,983
Petroleum or Coal Products	2,290,771
Clay, Concrete, Glass, Stone	2,283,197



### TOP COMMODITY by Value, 2018

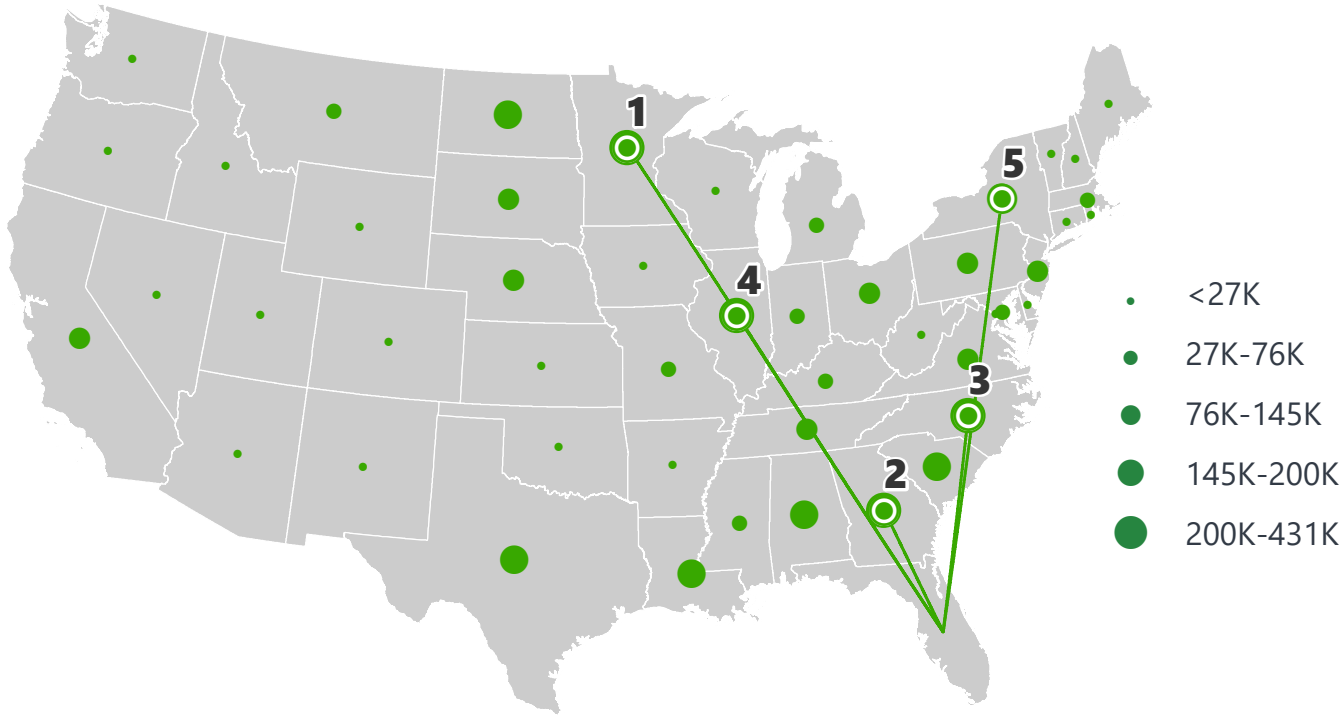
Misc. Mixed Shipments	\$ 3,328,811,267
Food or Kindred Products	\$ 2,216,970,036
Warehouse, Distribution Center and Drayage Movements	\$ 2,098,974,474
Transportation Equipment	\$ 1,195,022,143
Chemicals or Allied Products	\$ 1,146,279,678



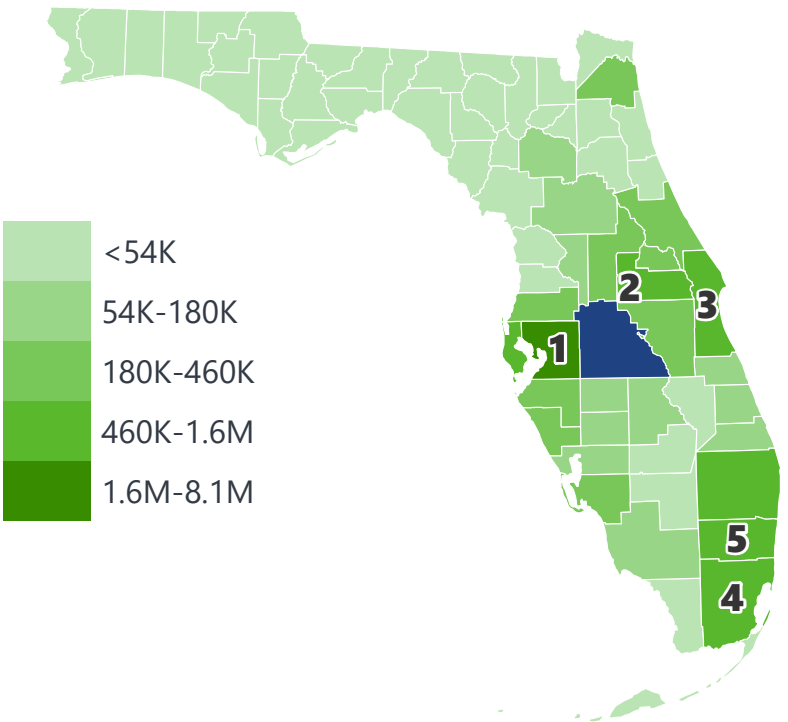
Warehouse, Distribution Center and Drayage Movements	\$ 6,286,449,893
Food or Kindred Products	\$ 2,319,547,409
Chemicals or Allied Products	\$ 2,317,558,858
Petroleum or Coal Products	\$ 812,468,626
Misc. Mixed Shipments	\$ 578,123,718

# POLK COUNTY EXPORTS AND IMPORTS

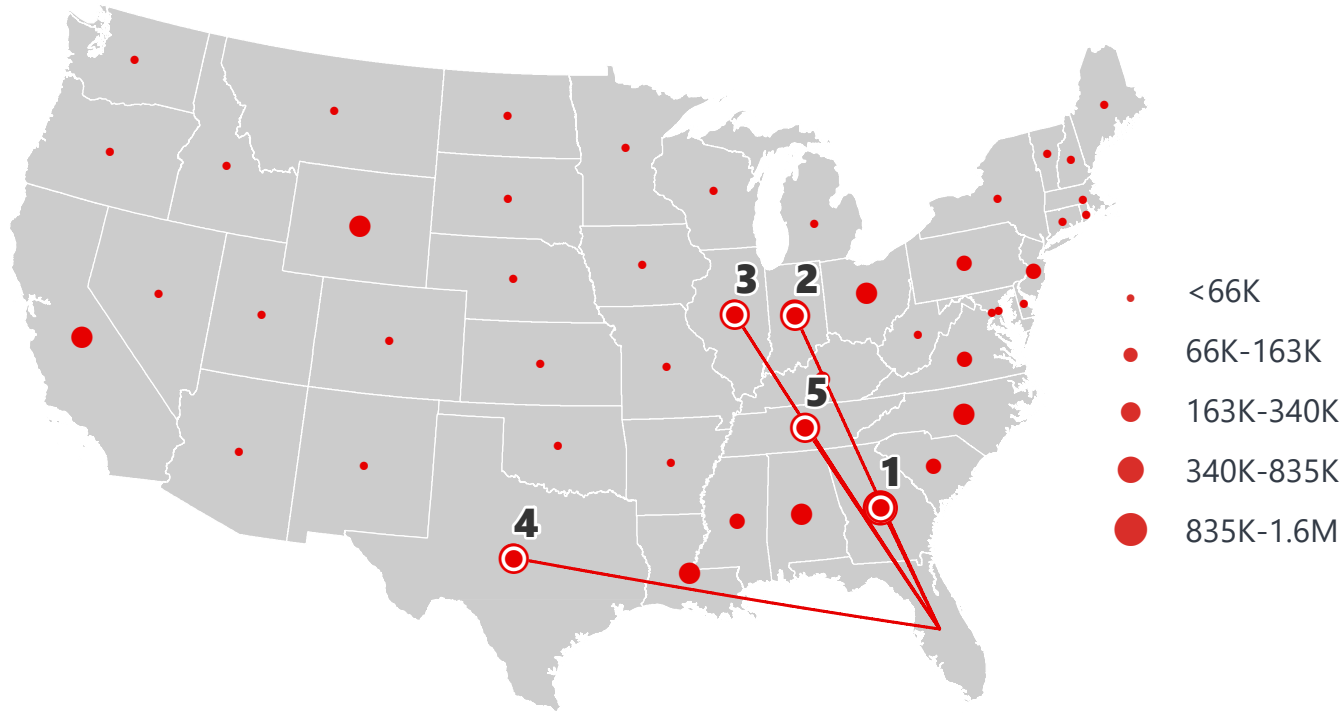
DOMESTIC EXPORTS (TONS)



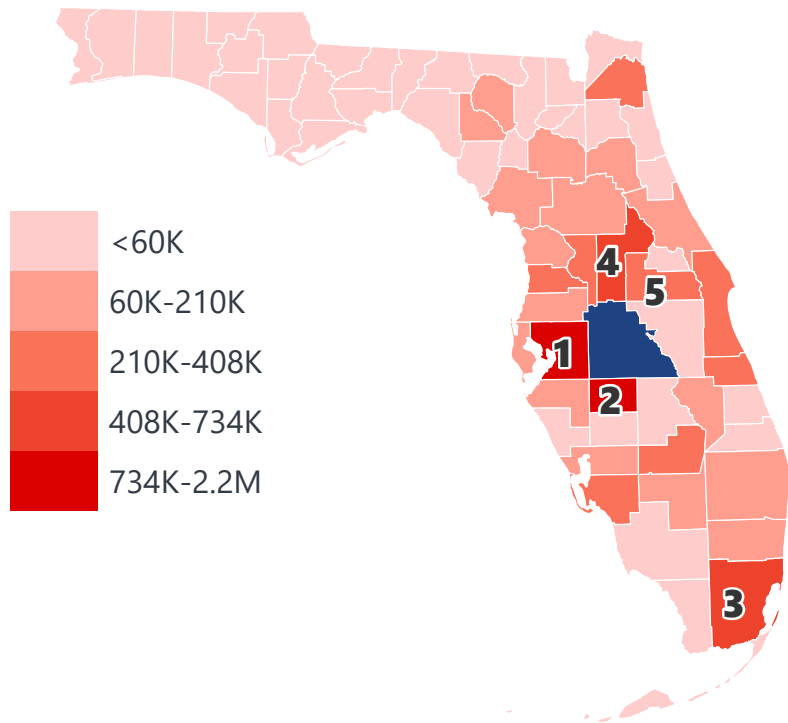
INTRASTATE EXPORTS (TONS)



DOMESTIC IMPORTS (TONS)



INTRASTATE IMPORTS (TONS)



## DOMESTIC EXPORTS (TONNAGE)

1	Minnesota	430,594
2	Georgia	393,196
3	North Carolina	314,409
4	Illinois	293,235
5	New York	201,012

## INTRASTATE EXPORTS (TONNAGE)

1	Hillsborough	8,093,763
2	Orange	1,612,640
3	Brevard	875,298
4	Miami-Dade	785,034
5	Broward	713,613

## DOMESTIC IMPORTS (TONNAGE)

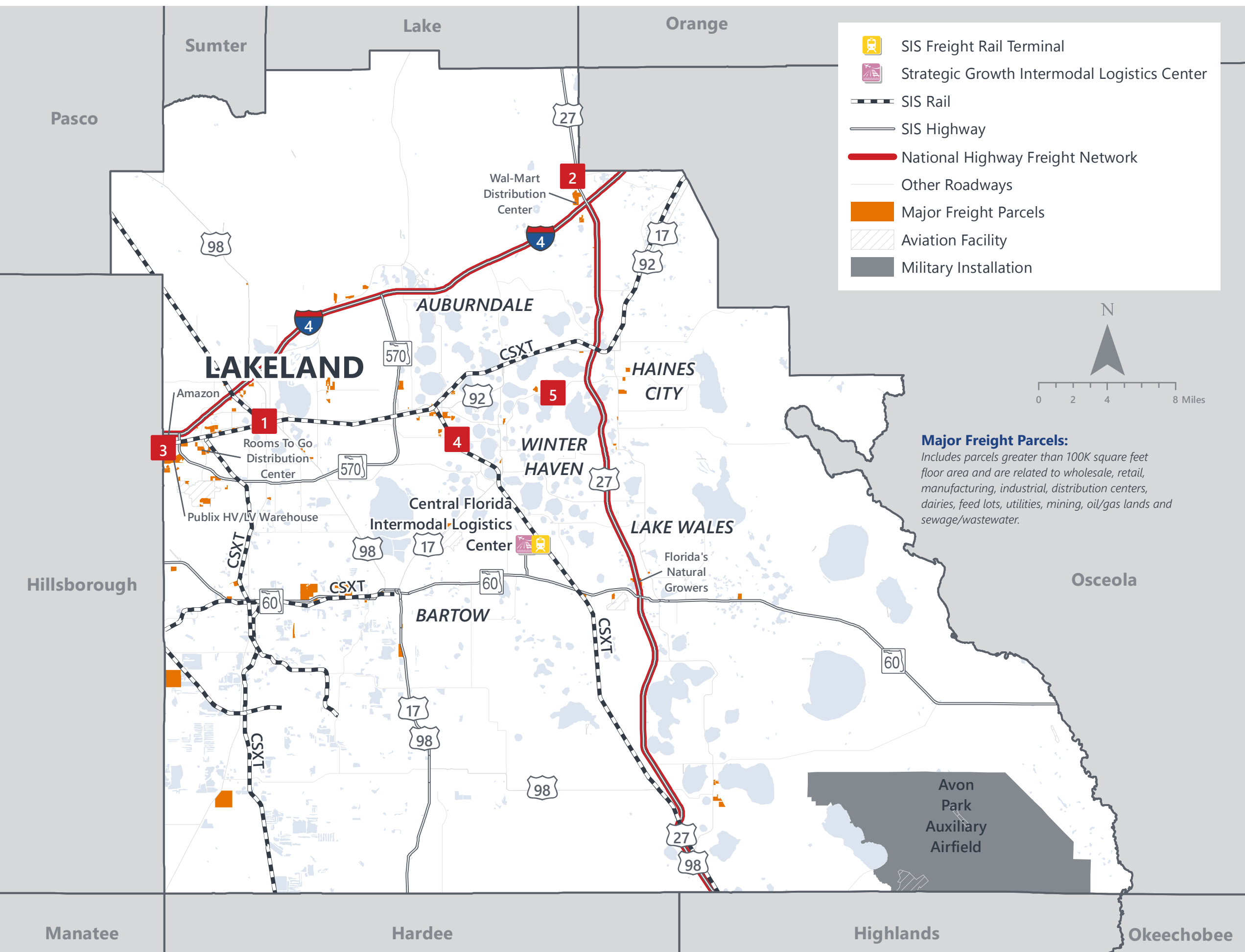
1	Georgia	1,557,905
2	Indiana	833,583
3	Illinois	613,584
4	Texas	514,720
5	Tennessee	341,913

## INTRASTATE IMPORTS (TONNAGE)

1	Hillsborough	2,156,375
2	Hardee	1,434,198
3	Miami-Dade	733,884
4	Lake	592,638
5	Orange	407,792



# POLK COUNTY FREIGHT INFRASTRUCTURE



## LARGEST FREIGHT EMPLOYERS

1	Publix Super Markets	2K-3K
2	Amazon	1K-2K
3	Amazon	900-1K
4	Carpenter Contractors	900-1K
5	Walmart	800-900

## MAJOR FREIGHT LAND USES

86.1 M SQ.FT Floor Area

64.71%	Warehousing and distribution centers
20.04%	Light manufacturing
5.07%	Canneries, bottlers and brewers, distilleries, wineries
2.23%	Fruit, vegetable and meat packing plants
2.22%	Mining lands, petroleum lands, or gas lands

4.6 B SQ.FT LAND AREA

81.46%	Mining lands, petroleum lands, or gas lands
6.04%	Utilities
5.32%	Warehousing and distribution centers
4.11%	Light manufacturing
0.87%	Sewage disposal and waste land

Florida Department of Economic Opportunity, 2018  
Florida Department of Revenue, 2019

# MAJOR COUNTY COMMODITIES



## IMPORTS



### TOP COMMODITY by Tonnage, 2018 (relative to Florida)

FL Rank	Commodity	% Florida Share
4	Misc. Mixed Shipments	10.05%
3	Apparel or Related Products	8.29%
6	Coal	7.75%
4	Chemicals or Allied Products	7.51%
7	Pulp, paper Or Allied Products	6.47%

## EXPORTS



FL Rank	Commodity	% Florida Share
1	Chemicals or Allied Products	31.56%
1	Food or Kindred Products	15.01%
5	Printed Matter	11.28%
4	Nonmetallic Minerals	7.28%
3	Lumber or Wood Products	6.37%

### TOP COMMODITY by Value, 2018 (relative to Florida)

FL Rank	Commodity	% Florida Share
3	Apparel or Related Products	11.74%
2	Nonmetallic Minerals	10.19%
4	Misc. Mixed Shipments	9.49%
6	Coal	7.74%
7	Farm Products	6.33%

FL Rank	Commodity	% Florida Share
1	Nonmetallic Minerals	18.66%
1	Food or Kindred Products	15.12%
1	Chemicals or Allied Products	13.93%
1	Lumber or Wood Products	10.12%
3	Warehouse, Distribution Center and Drayage Movements	9.09%





# TRANSPORTATION STATISTICS AND FREIGHT MOVEMENT BY MODE



**1.44 M** | Daily Truck Miles Traveled  
**1.34** | Planning Time Index  
**4,481** | Public Roadway Mileage



**54 Miles** | Distance from closest seaport  
(Port Tampa Bay)



**167.81** | Class I Mainline Miles (CSX)  
**-** | Class II Mainline Miles  
**18.84** | Class III Mainline Miles (FMID)



**65+ Miles** | Distance from closest airports  
(Tampa International Airport  
and Orlando International  
Airport)



# FLORIDA HIGHLIGHTS

**3rd most populous** US State

**\$1T Gross** Domestic Product

**4th Largest** US Economy and **17th Largest** Economy in World

Nation's **3rd largest** workforce

**1 in 5 U.S. exporters** are located in Florida

**\$153B** International Trade

**1.76M jobs supported** by Trade, Transportation and Utilities industry sector

**1.25M jobs supported** by Leisure and Hospitality industry sector

**131M** annual visitors

CAPITAL **TALLAHASSEE**

AREA (SQ. MILES) **53,624**

LARGEST CITY (SIZE) **JACKSONVILLE**

POPULATION (2019) **21,208,589**

ANNUAL POP GROWTH RATE (2010-2019) **1.4%**

EMPLOYMENT (2019) **8,884,065**

ANNUAL EMP GROWTH RATE (2010-2019) **2.8%**

*Bureau of Economic Business Research,  
Bureau of Labor Statistics*

## DOMESTIC IMPORTS

<b>1</b>	<b>GEORGIA</b>	\$44B
<b>2</b>	<b>CALIFORNIA</b>	\$29B
<b>3</b>	<b>TEXAS</b>	\$26B
<b>4</b>	<b>ALABAMA</b>	\$18B
<b>5</b>	<b>ILLINOIS</b>	\$18B

## DOMESTIC EXPORTS

<b>1</b>	<b>GEORGIA</b>	\$22B
<b>2</b>	<b>TEXAS</b>	\$19B
<b>3</b>	<b>CALIFORNIA</b>	\$15B
<b>4</b>	<b>NORTH CAROLINA</b>	\$12B
<b>5</b>	<b>NEW YORK</b>	\$10B

## INTERNATIONAL IMPORTS

<b>1</b>	<b>CHINA</b>	\$9.5B
<b>2</b>	<b>JAPAN</b>	\$6.5B
<b>3</b>	<b>BRAZIL</b>	\$6.4B
<b>4</b>	<b>MEXICO</b>	\$4.5B
<b>5</b>	<b>CHILE</b>	\$3.7B

## INTERNATIONAL EXPORTS

<b>1</b>	<b>BRAZIL</b>	\$13.4B
<b>2</b>	<b>COLOMBIA</b>	\$4.2B
<b>3</b>	<b>ARGENTINA</b>	\$3.6B
<b>4</b>	<b>DOMINICAN REPUBLIC</b>	\$3.1B
<b>5</b>	<b>CHILE</b>	\$3B

# TRANSPORTATION STATISTICS AND FREIGHT MOVEMENT BY MODE



**83%**  
TONNAGE

**71%**  
VALUE

**123,104** Public roadway mileage  
**12,130** State Highway System (SHS) mileage  
**30.7M** Daily truck miles traveled on SHS  
**98** Public truck parking facilities



**3.5%**  
TONNAGE

**2.9%**  
VALUE

**15** Deepwater seaports  
**4.1M** Twenty-foot equivalent units (TEUs)  
**16.8M** Annual cruise passengers



**6.7%**  
TONNAGE

**1.8%**  
VALUE

**2,936** Miles of roads  
**6.9M** Annual rail passenger traffic



**0.1%**  
TONNAGE

**5.4%**  
VALUE

**129** Public use airports  
**20** Commercial service airports  
**2** Active spaceports



**3.6%**  
TONNAGE

**1%**  
VALUE

**5,899** Miles of gas transmission and hazardous liquid pipelines



**3.1%**  
TONNAGE

**17.9%**  
VALUE

Includes shipments by multiple modes and by parcel delivery services, U.S. Postal Service, or couriers (capped at 150 pounds). This category is not limited to containerized or trailer-on-flatcar shipments.

# FLORIDA COMMODITY FLOWS (2018-2045)



IMPORTS



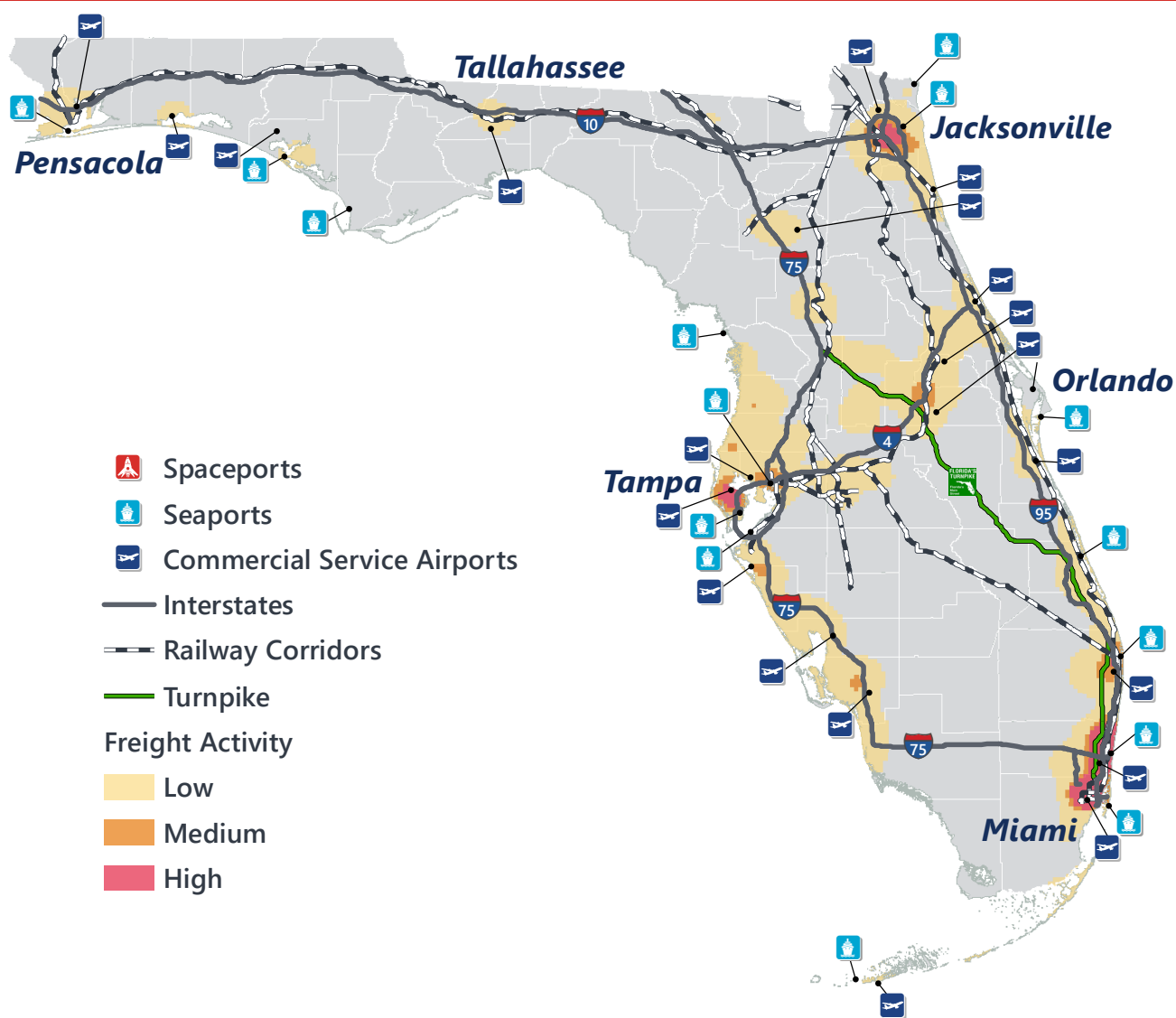
WITHIN FL



EXPORTS

	2018	2045	2018	2045	2018	2045
TONNAGE	142M	190M	656M	761M	57M	103M
VALUE	\$321B	\$690B	\$402B	\$844B	\$180B	\$606B

Freight Analysis Framework (FAF) 4.5.1.



**Rickey Fitzgerald**  
 Manager, Freight & Multimodal Operations  
 Florida Department of Transportation  
 605 Suwannee Street, Tallahassee, FL 32399  
 Rickey.Fitzgerald@dot.state.fl.us  
 850.414.4702