

# FREIGHT AND LOGISTICS OVERVIEW

FEBRUARY 2021

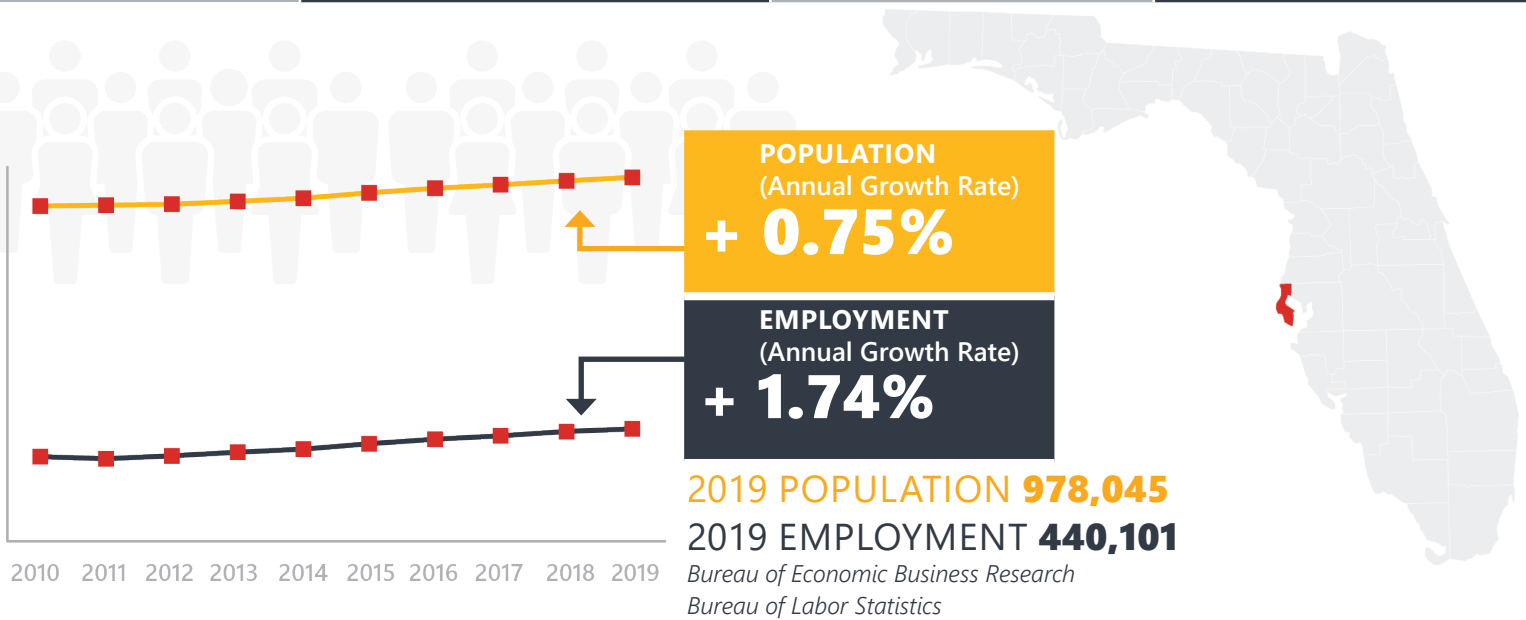
# PINELLAS COUNTY



*Mission: The department will provide a safe transportation system that ensures the mobility of people and goods, enhances economic prosperity, and preserves the quality of our environment and communities.*

# PINELLAS COUNTY HIGHLIGHTS

"THE SUNSHINE CITY"		AREA (SQ . MILES)	608
COUNTY SEAT	CLEARWATER	LARGEST CITY (SIZE)	ST. PETERSBURG



## LARGEST INDUSTRY SECTORS BY EMPLOYMENT (2019)

Office of Economic and Demographic Research



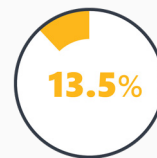
Education & health services



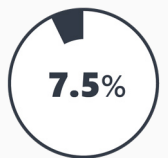
Trade, transportation & utilities



Professional & business services



Leisure & hospitality



Manufacturing

## FASTEST GROWING INDUSTRIES (2010-2019)

LEISURE AND HOSPITALITY	JOBS ADDED	15,204
PROFESSIONAL AND BUSINESS SERVICES		10,836
EDUCATION AND HEALTH SERVICES		9,458
TRADE, TRANSPORTATION, AND UTILITIES		9,051
CONSTRUCTION		6,191

Bureau of Labor Statistics

## DID YOU KNOW?

Pinellas County is the most densely populated county in Florida.

The Young-Rainey Science Technology and Research (STAR) Center is the first and only Department of Energy plant in the nation to be transitioned from nuclear weapons production to a commercially viable high tech center.

Trip Advisor named Clearwater the nation's #1 beach in 2018.



# COMMODITY FLOW HIGHLIGHTS



## IMPORTS

## WITHIN COUNTY

## EXPORTS

	2018	2045	2018	2045	2018	2045
Tonnage:	12.40 M	15.92 M	0.84 M	1.11 M	4.56 M	5.96 M
Value:	\$ 13.14 B	\$ 17.87 B	\$ 1.41 B	\$ 1.88 B	\$ 6.93 B	\$ 10.13 B



### TOP COMMODITY by Tonnage, 2018



Nonmetallic Minerals	2,726,304
Petroleum or Coal Products	2,096,144
Clay, Concrete, Glass, Stone	2,039,146
Warehouse, Distribution Center and Drayage Movements	1,792,732
Food or Kindred Products	1,190,711

Warehouse, Distribution Center and Drayage Movements	1,141,306
Waste or Scrap Materials	1,125,154
Clay, Concrete, Glass, Stone	588,255
Petroleum or Coal Products	443,985
Chemicals or Allied Products	307,959



### TOP COMMODITY by Value, 2018

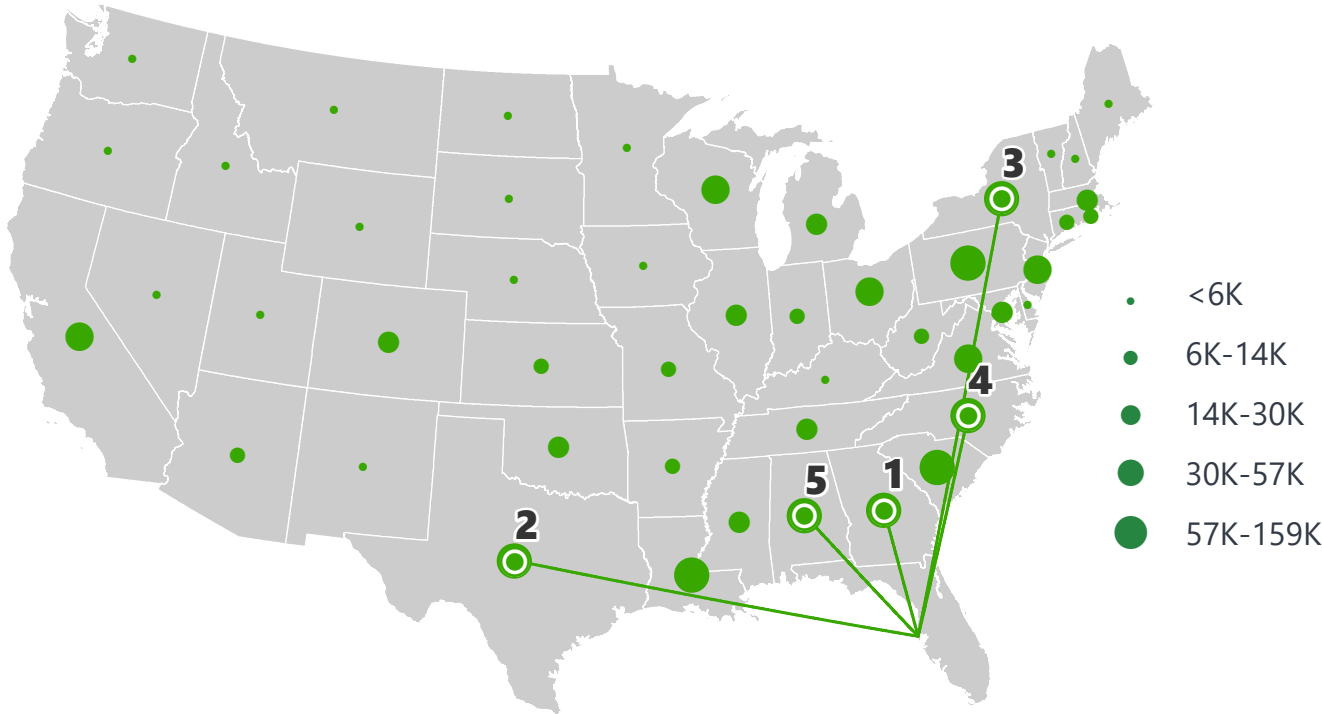


Warehouse, Distribution Center and Drayage Movements	\$ 2,497,178,607
Transportation Equipment	\$ 1,638,325,707
Food or Kindred Products	\$ 1,611,965,375
Petroleum or Coal Products	\$ 1,139,717,523
Chemicals or Allied Products	\$ 977,732,170

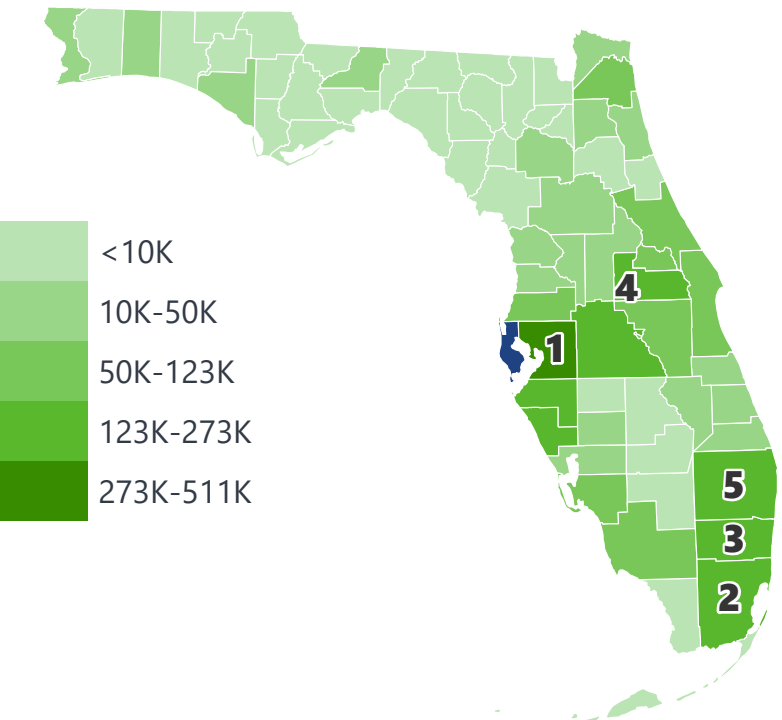
Warehouse, Distribution Center and Drayage Movements	\$ 1,622,015,426
Machinery	\$ 724,835,431
Electrical Equipment	\$ 714,763,396
Chemicals or Allied Products	\$ 696,440,498
Fabricated Metal Products	\$ 471,403,651

# PINELLAS COUNTY EXPORTS AND IMPORTS

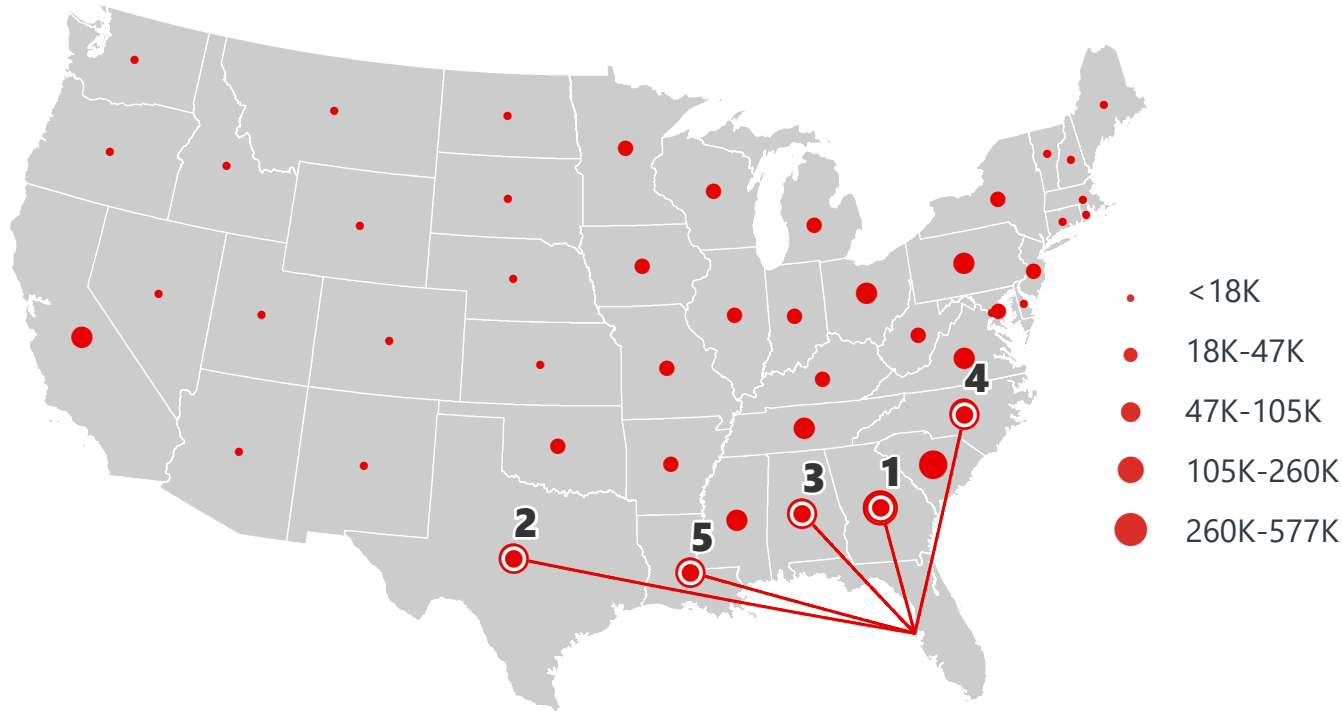
DOMESTIC EXPORTS (TONS)



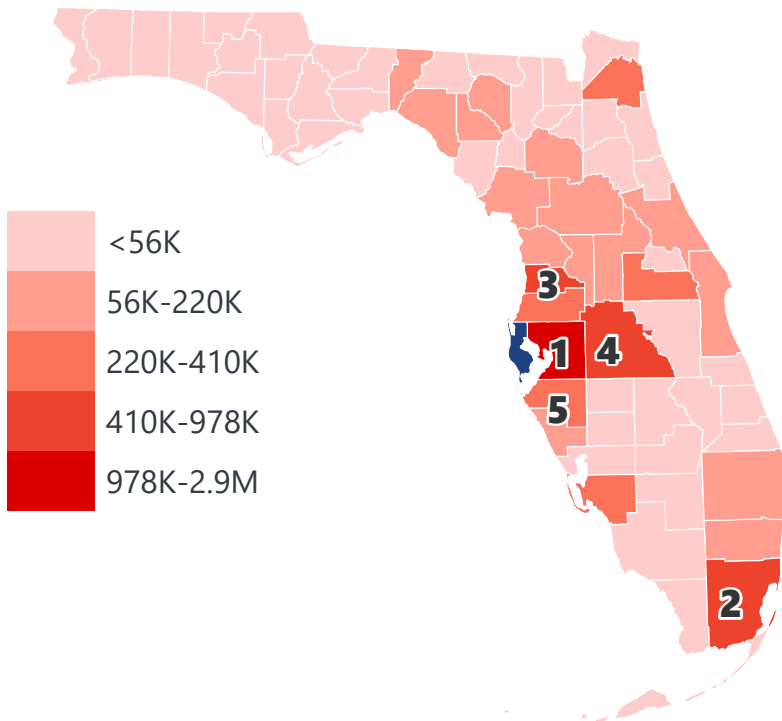
INTRASTATE EXPORTS (TONS)



DOMESTIC IMPORTS (TONS)



INTRASTATE IMPORTS (TONS)



## DOMESTIC EXPORTS (TONNAGE)

1	Georgia	158,026
2	Texas	122,273
3	New York	110,818
4	North Carolina	105,540
5	Alabama	86,847

## INTRASTATE EXPORTS (TONNAGE)

1	Hillsborough	510,277
2	Miami-Dade	272,283
3	Broward	207,779
4	Orange	206,213
5	Palm Beach	179,476

## DOMESTIC IMPORTS (TONNAGE)

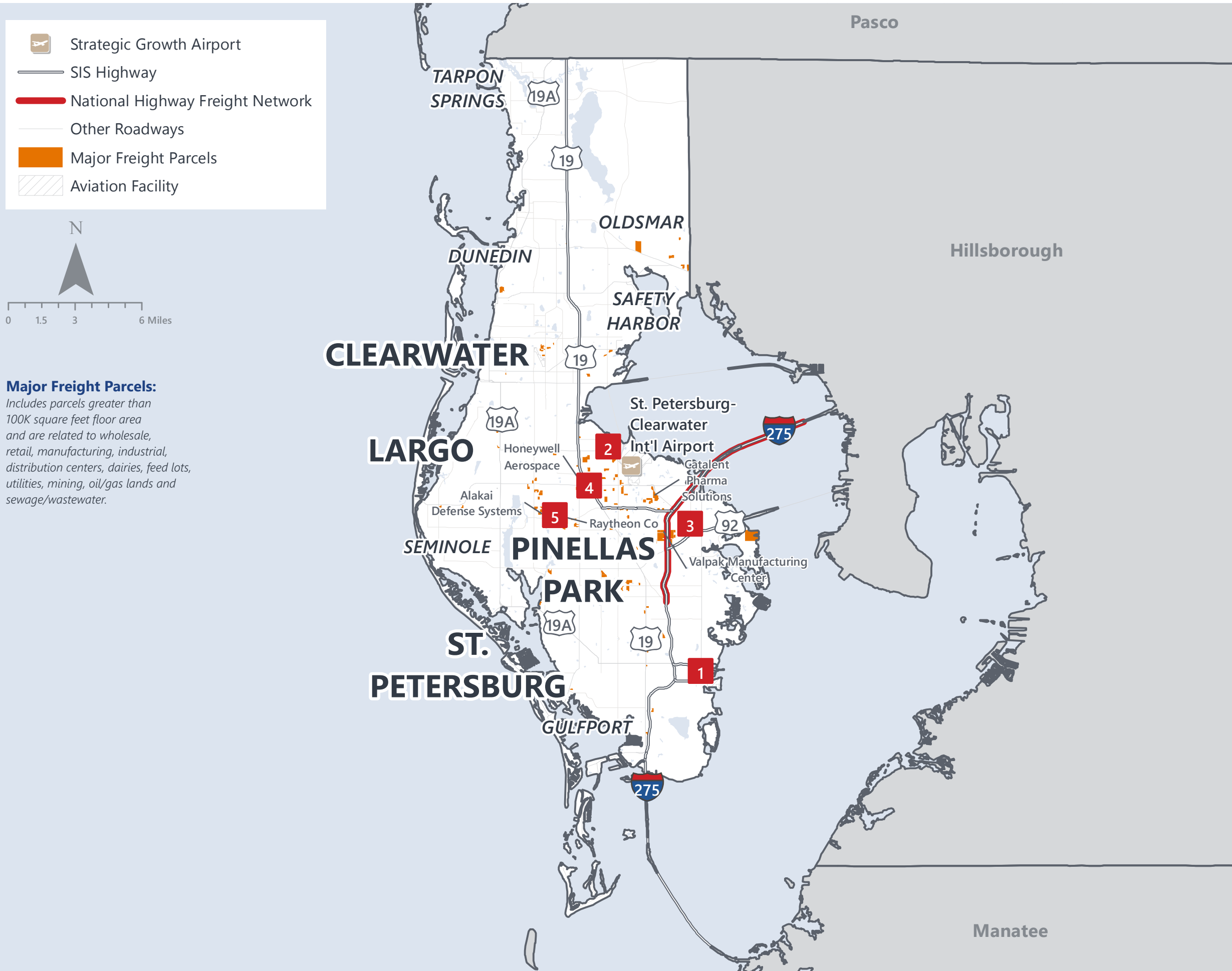
1	Georgia	566,567
2	Texas	259,259
3	Alabama	233,675
4	North Carolina	197,863
5	Louisiana	168,798

## INTRASTATE IMPORTS (TONNAGE)

1	Hillsborough	2,865,687
2	Miami-Dade	977,147
3	Hernando	817,447
4	Polk	704,583
5	Manatee	410,955



# PINELLAS COUNTY FREIGHT INFRASTRUCTURE



## LARGEST FREIGHT EMPLOYERS

1	HSNI	2K-3K
2	Tech Data	1K-2K
3	Jabil Circuit	1K-2K
4	Honeywell	1K-2K
5	Raytheon	1K-2K

## MAJOR FREIGHT LAND USES

86.3 M SQ.FT Floor Area

51.85%	Light manufacturing
36.42%	Warehousing and distribution centers
5.19%	Heavy industrial
2.39%	Utilities
1.77%	Airports, bus terminals and marine terminals

798 M SQ.FT LAND AREA

32.35%	Sewage disposal and waste land
27.74%	Light manufacturing
19.89%	Utilities
11.78%	Warehousing and distribution centers
4.34%	Airports, bus terminals and marine terminals

Florida Department of Economic Opportunity, 2018  
Florida Department of Revenue, 2019

# MAJOR COUNTY COMMODITIES



## IMPORTS



### TOP COMMODITY by Tonnage, 2018 (relative to Florida)

FL Rank	Commodity	% Florida Share
5	Primary Metal Products	7.60%
7	Misc. Manufacturing Products	6.51%
7	Rubber or Misc. Plastics	5.59%
7	Printed Matter	5.46%
7	Fabricated Metal Products	5.25%

## EXPORTS



FL Rank	Commodity	% Florida Share
1	Misc. Manufacturing Products	19.94%
3	Leather or Leather Products	16.98%
3	Electrical Equipment	13.54%
3	Fabricated Metal Products	10.89%
6	Printed Matter	10.75%

### TOP COMMODITY by Value, 2018 (relative to Florida)

FL Rank	Commodity	% Florida Share
7	Rubber or Misc. Plastics	5.33%
6	Primary Metal Products	5.30%
7	Printed Matter	4.97%
7	Fabricated Metal Products	4.87%
9	Pulp, Paper Or Allied Products	4.69%

FL Rank	Commodity	% Florida Share
3	Printed Matter	12.41%
3	Leather or Leather Products	11.91%
4	Fabricated Metal Products	8.60%
6	Rubber or Misc. Plastics	7.38%
5	Machinery	6.85%





# TRANSPORTATION STATISTICS AND FREIGHT MOVEMENT BY MODE



**415 K** | Daily Truck Miles Traveled  
**2.30** | Planning Time Index  
**3,666** | Public Roadway Mileage



**2 Major Seaports** | Port of St. Petersburg and Port Tampa Bay



**36.78** | Class I Mainline Miles (CSX)  
- Class II Mainline Miles  
- Class III Mainline Miles



**1 Major Airport** | St. Petersburg Clearwater International Airport



# FLORIDA HIGHLIGHTS

**3rd most populous** US State

**\$1T Gross** Domestic Product

**4th Largest** US Economy and **17th Largest** Economy in World

Nation's **3rd largest** workforce

**1 in 5 U.S. exporters** are located in Florida

**\$153B** International Trade

**1.76M jobs supported** by Trade, Transportation and Utilities industry sector

**1.25M jobs supported** by Leisure and Hospitality industry sector

**131M** annual visitors

CAPITAL **TALLAHASSEE**

AREA  
(SQ. MILES) **53,624**

LARGEST  
CITY (SIZE) **JACKSONVILLE**

POPULATION  
(2019) **21,208,589**

ANNUAL POP  
GROWTH RATE  
(2010-2019) **1.4%**

EMPLOYMENT  
(2019) **8,884,065**

ANNUAL EMP  
GROWTH RATE  
(2010-2019) **2.8%**

*Bureau of Economic Business Research,  
Bureau of Labor Statistics*

## DOMESTIC IMPORTS

<b>1</b>	<b>GEORGIA</b>	\$44B
<b>2</b>	<b>CALIFORNIA</b>	\$29B
<b>3</b>	<b>TEXAS</b>	\$26B
<b>4</b>	<b>ALABAMA</b>	\$18B
<b>5</b>	<b>ILLINOIS</b>	\$18B

## DOMESTIC EXPORTS

<b>1</b>	<b>GEORGIA</b>	\$22B
<b>2</b>	<b>TEXAS</b>	\$19B
<b>3</b>	<b>CALIFORNIA</b>	\$15B
<b>4</b>	<b>NORTH CAROLINA</b>	\$12B
<b>5</b>	<b>NEW YORK</b>	\$10B

## INTERNATIONAL IMPORTS

<b>1</b>	<b>CHINA</b>	\$9.5B
<b>2</b>	<b>JAPAN</b>	\$6.5B
<b>3</b>	<b>BRAZIL</b>	\$6.4B
<b>4</b>	<b>MEXICO</b>	\$4.5B
<b>5</b>	<b>CHILE</b>	\$3.7B

## INTERNATIONAL EXPORTS

<b>1</b>	<b>BRAZIL</b>	\$13.4B
<b>2</b>	<b>COLOMBIA</b>	\$4.2B
<b>3</b>	<b>ARGENTINA</b>	\$3.6B
<b>4</b>	<b>DOMINICAN REPUBLIC</b>	\$3.1B
<b>5</b>	<b>CHILE</b>	\$3B

# TRANSPORTATION STATISTICS AND FREIGHT MOVEMENT BY MODE



**83%**  
TONNAGE

**71%**  
VALUE

**123,104** Public roadway mileage  
**12,130** State Highway System (SHS) mileage  
**30.7M** Daily truck miles traveled on SHS  
**98** Public truck parking facilities



**3.5%**  
TONNAGE

**2.9%**  
VALUE

**15** Deepwater seaports  
**4.1M** Twenty-foot equivalent units (TEUs)  
**16.8M** Annual cruise passengers



**6.7%**  
TONNAGE

**1.8%**  
VALUE

**2,936** Miles of roads  
**6.9M** Annual rail passenger traffic



**0.1%**  
TONNAGE

**5.4%**  
VALUE

**129** Public use airports  
**20** Commercial service airports  
**2** Active spaceports



**3.6%**  
TONNAGE

**1%**  
VALUE

**5,899** Miles of gas transmission and hazardous liquid pipelines



**3.1%**  
TONNAGE

**17.9%**  
VALUE

Includes shipments by multiple modes and by parcel delivery services, U.S. Postal Service, or couriers (capped at 150 pounds). This category is not limited to containerized or trailer-on-flatcar shipments.

# FLORIDA COMMODITY FLOWS (2018-2045)



IMPORTS



WITHIN FL



EXPORTS

	2018	2045	2018	2045	2018	2045
TONNAGE	142M	190M	656M	761M	57M	103M
VALUE	\$321B	\$690B	\$402B	\$844B	\$180B	\$606B

Freight Analysis Framework (FAF) 4.5.1.



**Rickey Fitzgerald**  
 Manager, Freight & Multimodal Operations  
 Florida Department of Transportation  
 605 Suwannee Street, Tallahassee, FL 32399  
 Rickey.Fitzgerald@dot.state.fl.us  
 850.414.4702