

FREIGHT AND LOGISTICS OVERVIEW

FEBRUARY 2021

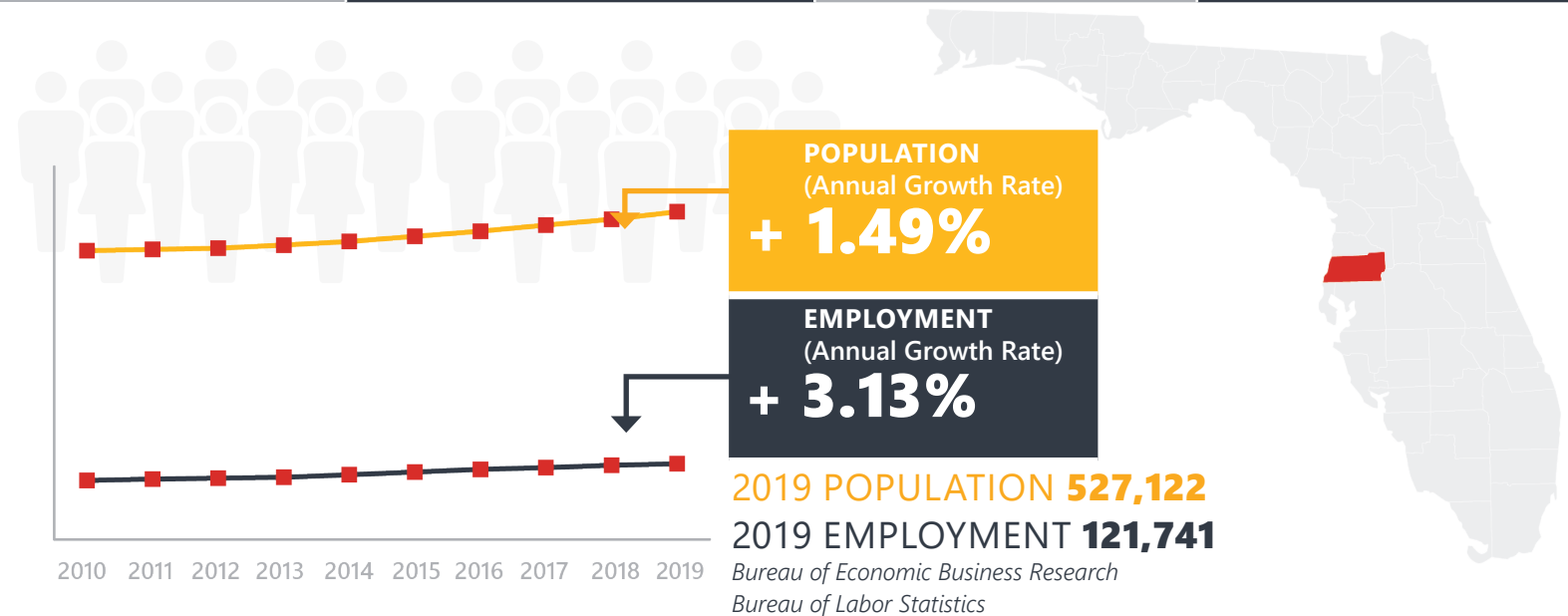
PASCO COUNTY



Mission: The department will provide a safe transportation system that ensures the mobility of people and goods, enhances economic prosperity, and preserves the quality of our environment and communities.

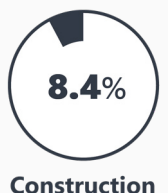
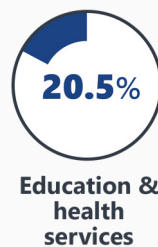
PASCO COUNTY HIGHLIGHTS

"FLORIDA'S SPORTS COAST"		AREA (SQ . MILES)	868
COUNTY SEAT	DADE CITY	LARGEST CITY (SIZE)	NEW PORT RICHEY



LARGEST INDUSTRY SECTORS BY EMPLOYMENT (2019)

Office of Economic and Demographic Research



FASTEST GROWING INDUSTRIES (2010-2019)

EDUCATION AND HEALTH SERVICES	JOBS ADDED	6,318
TRADE, TRANSPORTATION, AND UTILITIES		5,996
LEISURE AND HOSPITALITY		4,808
CONSTRUCTION		4,198
PROFESSIONAL AND BUSINESS SERVICES		3,000

Bureau of Labor Statistics

DID YOU KNOW?

Pasco County has more than 100 square miles of managed recreational facilities, including parks, golf courses, canoe trails, and four artificial reefs.

Pasco County offers 9 sports complexes and hosts elite events like the Sunshine State Games. It was also home to the 2018 U.S. Olympic Women's Hockey Team during their training program.

Zephyrhills is known as the "Skydive City". More than 70,000 skydives are performed annually at the Skydive City airport.

COMMODITY FLOW HIGHLIGHTS



IMPORTS

WITHIN COUNTY

EXPORTS

	2018	2045	2018	2045	2018	2045
Tonnage:	6.04 M	8.41 M	429.3 K	506.92 K	3.38 M	4.43 M
Value:	\$ 3.90 B	\$ 5.66 B	\$ 94.8 M	\$ 126.57 M	\$ 0.84 B	\$ 1.20 B



TOP COMMODITY by Tonnage, 2018



Nonmetallic Minerals	2,389,128
Petroleum or Coal Products	866,464
Clay, Concrete, Glass, Stone	757,594
Warehouse, Distribution Center and Drayage Movements	696,152
Food or Kindred Products	412,593

Clay, Concrete, Glass, Stone	1,330,574
Nonmetallic Minerals	1,207,030
Waste or Scrap Materials	502,757
Farm Products	90,664
Food or Kindred Products	77,899



TOP COMMODITY by Value, 2018

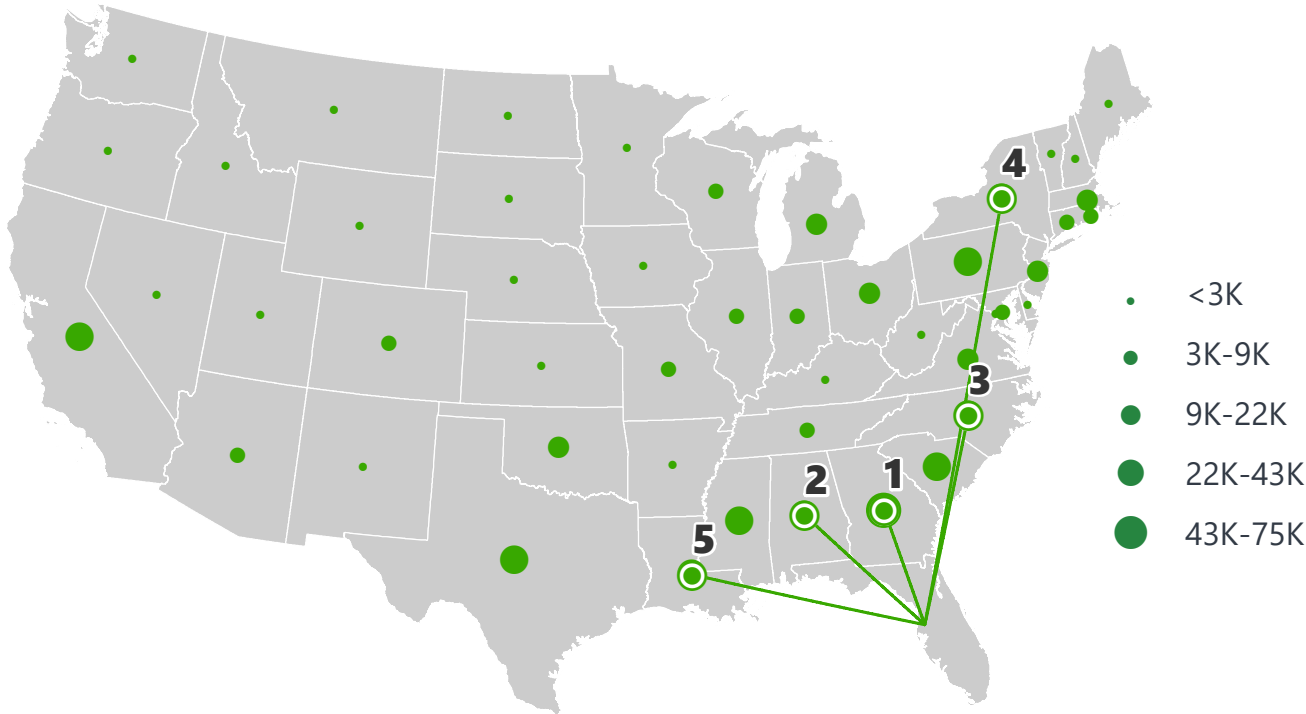


Warehouse, Distribution Center and Drayage Movements	\$ 862,319,412
Transportation Equipment	\$ 736,450,262
Food or Kindred Products	\$ 521,995,592
Petroleum or Coal Products	\$ 463,376,100
Chemicals or Allied Products	\$ 223,041,375

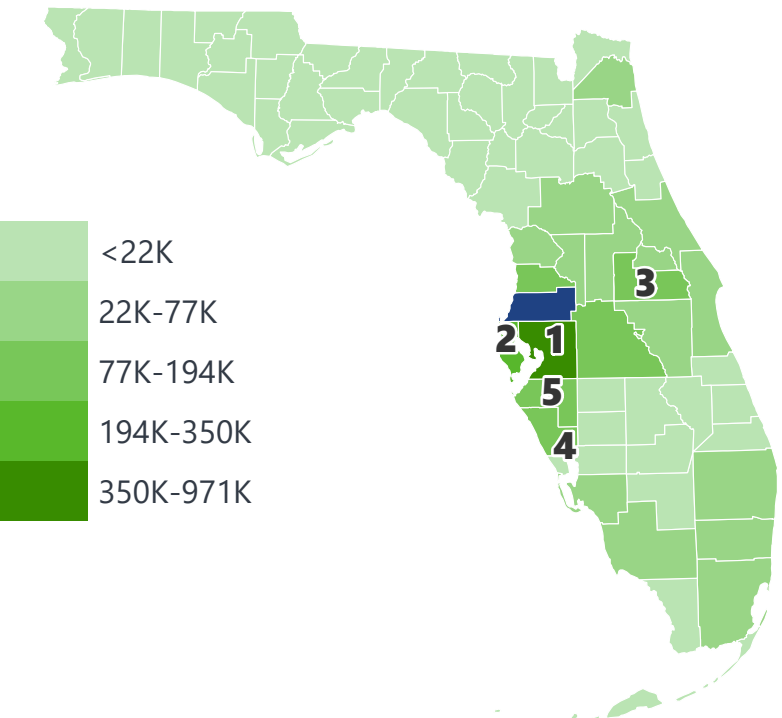
Fabricated Metal Products	\$ 186,799,782
Clay, Concrete, Glass, Stone	\$ 150,738,155
Waste or Scrap Materials	\$ 132,210,926
Food or Kindred Products	\$ 61,952,632
Machinery	\$ 49,426,923

PASCO COUNTY EXPORTS AND IMPORTS

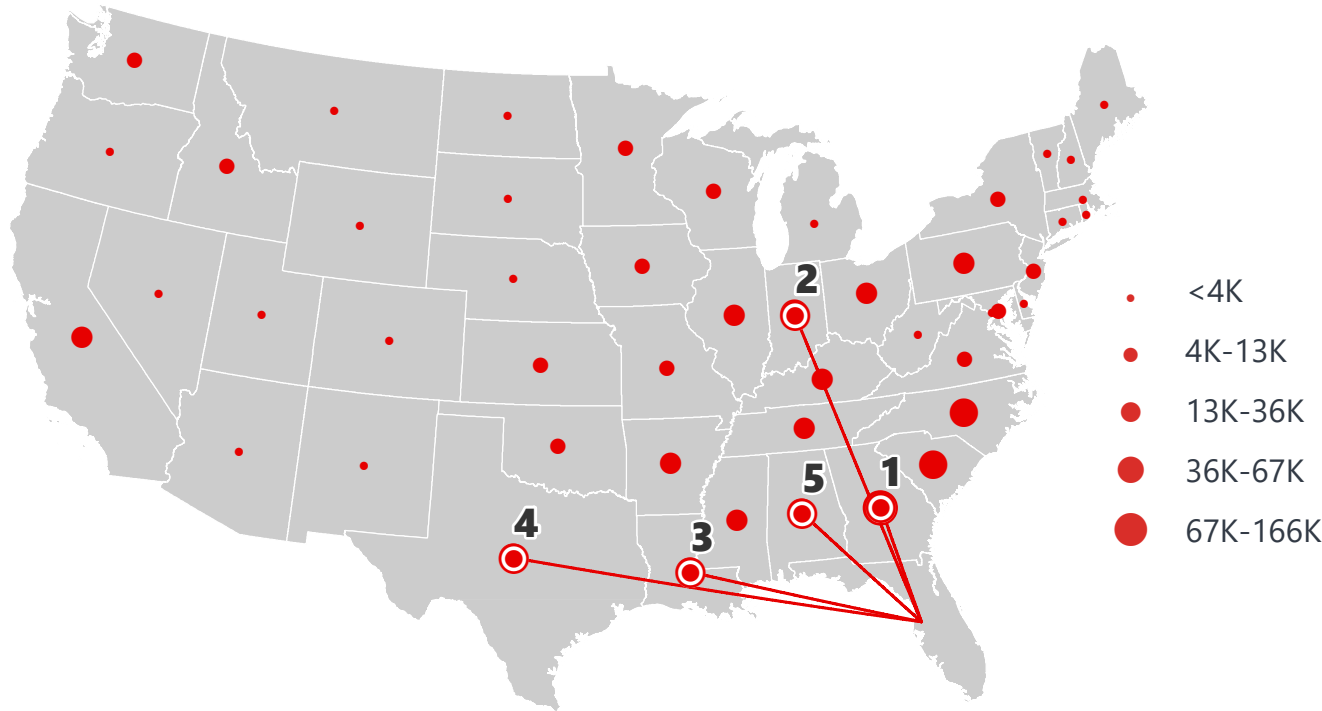
DOMESTIC EXPORTS (TONS)



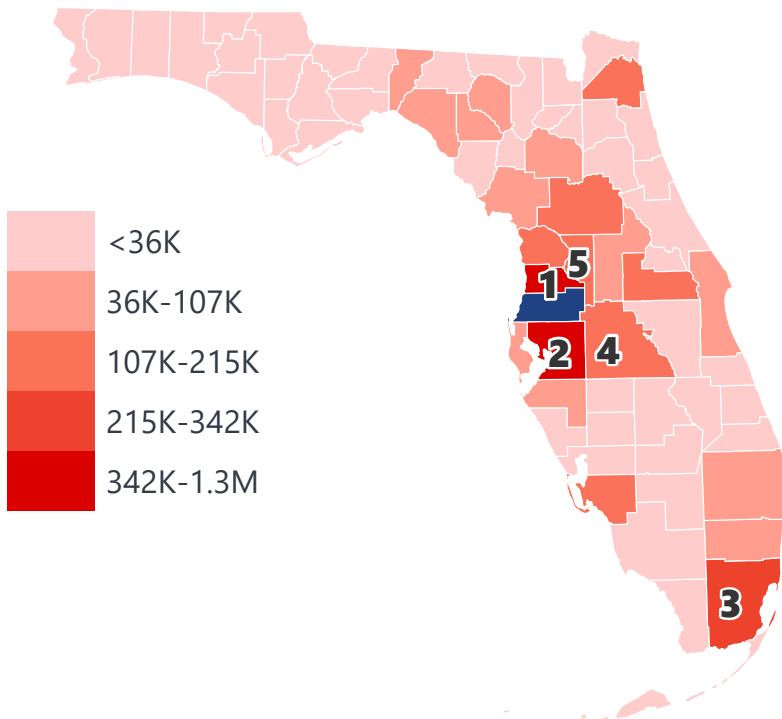
INTRASTATE EXPORTS (TONS)



DOMESTIC IMPORTS (TONS)



INTRASTATE IMPORTS (TONS)



DOMESTIC EXPORTS (TONNAGE)

1	Georgia	74,621
2	Alabama	43,406
3	North Carolina	38,638
4	New York	35,089
5	Louisiana	33,095

INTRASTATE EXPORTS (TONNAGE)

1	Hillsborough	970,725
2	Pinellas	349,943
3	Orange	194,520
4	Sarasota	139,091
5	Manatee	118,749

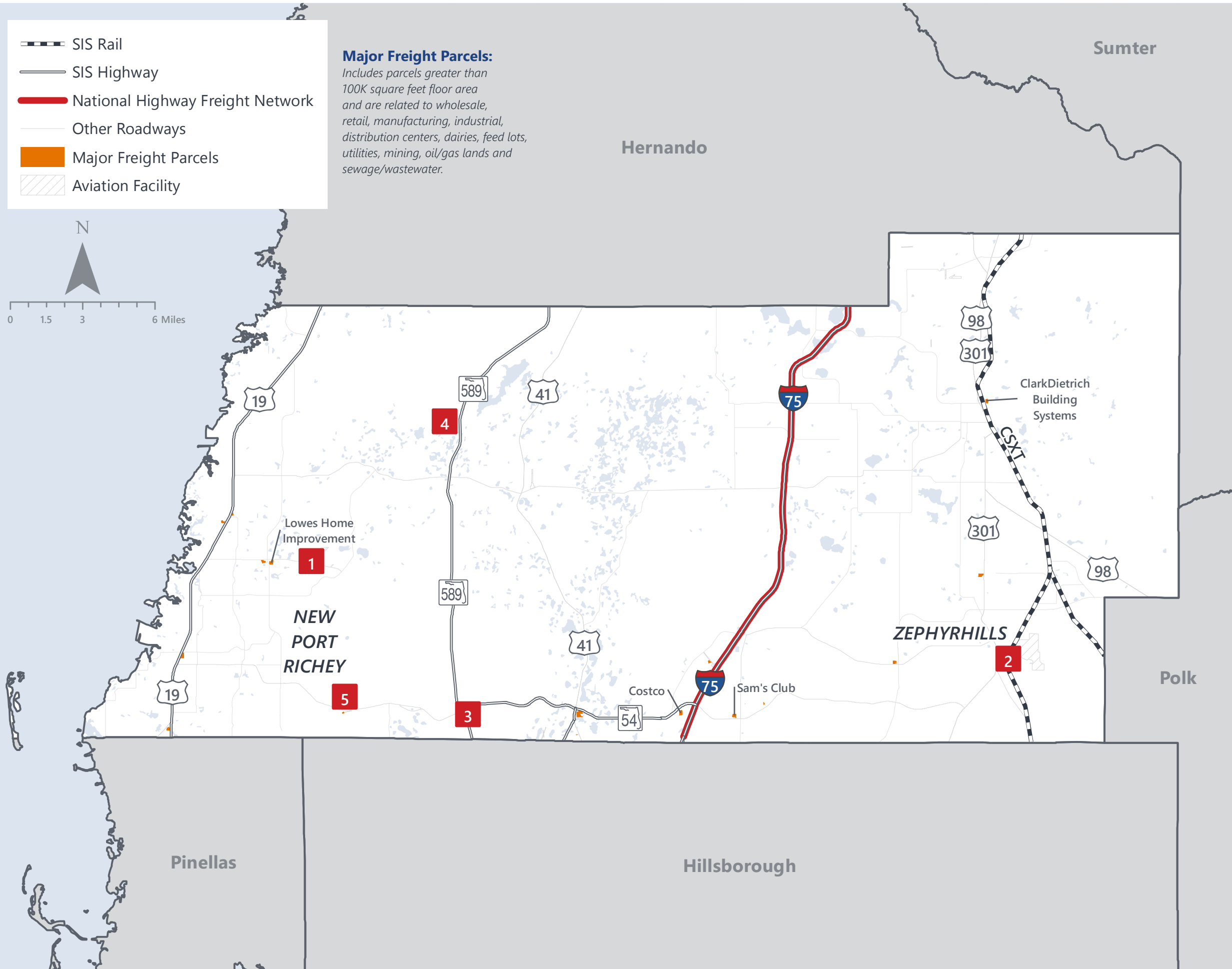
DOMESTIC IMPORTS (TONNAGE)

1	Georgia	165,991
2	Indiana	67,922
3	Louisiana	61,400
4	Texas	58,388
5	Alabama	54,659

INTRASTATE IMPORTS (TONNAGE)

1	Hernando	1,251,024
2	Hillsborough	1,176,980
3	Miami-Dade	342,433
4	Polk	215,353
5	Sumter	200,059

PASCO COUNTY FREIGHT INFRASTRUCTURE



LARGEST FREIGHT EMPLOYERS

1	Pall Aeropower	300-400
2	Nestle Waters North	200-300
3	Tru Simulation + Training	100-200
4	Leggett & Platt	100-200
5	Polaris Sales Co	100-200

MAJOR FREIGHT LAND USES

12.8 M SQ.FT Floor Area

68.19%	Warehousing and distribution centers
16.25%	Light manufacturing
5.86%	Heavy industrial
4.68%	Dairies, feed lots
1.77%	Utilities

1.05 B SQ.FT LAND AREA

57.09%	Sewage disposal and waste land
20.02%	Dairies, feed lots
6.69%	Mining lands, petroleum lands, or gas lands
6.59%	Warehousing and distribution centers
5.45%	Utilities

Florida Department of Economic Opportunity, 2018
Florida Department of Revenue, 2019

MAJOR COUNTY COMMODITIES



IMPORTS



TOP COMMODITY by Tonnage, 2018 (relative to Florida)

FL Rank	Commodity	% Florida Share
13	Nonmetallic Minerals	1.99%
15	Waste or Scrap Materials	1.85%
16	Clay, Concrete, Glass, Stone	1.82%
16	Warehouse, Distribution Center and Drayage Movements	1.65%
16	Food or Kindred Products	1.61%

EXPORTS



FL Rank	Commodity	% Florida Share
3	Ordnance or Accessories	6.97%
6	Forest Products	3.43%
10	Fabricated Metal Products	3.13%
12	Clay, Concrete, Glass, Stone	2.70%
7	Marine Products	1.95%

TOP COMMODITY by Value, 2018 (relative to Florida)

FL Rank	Commodity	% Florida Share
14	Waste or Scrap Materials	1.85%
16	Clay, Concrete, Glass, Stone	1.55%
15	Nonmetallic Minerals	1.43%
17	Food or Kindred Products	1.38%
18	Rubber or Misc. Plastics	1.23%

FL Rank	Commodity	% Florida Share
3	Ordnance or Accessories	15.19%
6	Forest Products	3.60%
10	Fabricated Metal Products	3.41%
7	Marine Products	2.43%
14	Clay, Concrete, Glass, Stone	1.98%



TRANSPORTATION STATISTICS AND FREIGHT MOVEMENT BY MODE



603 K | Daily Truck Miles Traveled
1.21 | Planning Time Index
2,390 | Public Roadway Mileage



30 Miles | Distance from closest seaport
(Port Tampa Bay)



48.02 | Class I Mainline Miles (CSX)
- Class II Mainline Miles
- Class III Mainline Miles



35 Miles | Distance from closest airport
(Tampa International Airport)

FLORIDA HIGHLIGHTS

3rd most populous US State

\$1T Gross Domestic Product

4th Largest US Economy and **17th Largest** Economy in World

Nation's **3rd largest** workforce

1 in 5 U.S. exporters are located in Florida

\$153B International Trade

1.76M jobs supported by Trade, Transportation and Utilities industry sector

1.25M jobs supported by Leisure and Hospitality industry sector

131M annual visitors

CAPITAL **TALLAHASSEE**

AREA
(SQ. MILES) **53,624**

LARGEST
CITY (SIZE) **JACKSONVILLE**

POPULATION
(2019) **21,208,589**

ANNUAL POP
GROWTH RATE
(2010-2019) **1.4%**

EMPLOYMENT
(2019) **8,884,065**

ANNUAL EMP
GROWTH RATE
(2010-2019) **2.8%**

*Bureau of Economic Business Research,
Bureau of Labor Statistics*

DOMESTIC IMPORTS

1	GEORGIA	\$44B
2	CALIFORNIA	\$29B
3	TEXAS	\$26B
4	ALABAMA	\$18B
5	ILLINOIS	\$18B

DOMESTIC EXPORTS

1	GEORGIA	\$22B
2	TEXAS	\$19B
3	CALIFORNIA	\$15B
4	NORTH CAROLINA	\$12B
5	NEW YORK	\$10B

INTERNATIONAL IMPORTS

1	CHINA	\$9.5B
2	JAPAN	\$6.5B
3	BRAZIL	\$6.4B
4	MEXICO	\$4.5B
5	CHILE	\$3.7B

INTERNATIONAL EXPORTS

1	BRAZIL	\$13.4B
2	COLOMBIA	\$4.2B
3	ARGENTINA	\$3.6B
4	DOMINICAN REPUBLIC	\$3.1B
5	CHILE	\$3B

TRANSPORTATION STATISTICS AND FREIGHT MOVEMENT BY MODE



83%
TONNAGE

71%
VALUE

123,104 Public roadway mileage
12,130 State Highway System (SHS) mileage
30.7M Daily truck miles traveled on SHS
98 Public truck parking facilities



3.5%
TONNAGE

2.9%
VALUE

15 Deepwater seaports
4.1M Twenty-foot equivalent units (TEUs)
16.8M Annual cruise passengers



6.7%
TONNAGE

1.8%
VALUE

2,936 Miles of roads
6.9M Annual rail passenger traffic



0.1%
TONNAGE

5.4%
VALUE

129 Public use airports
20 Commercial service airports
2 Active spaceports



3.6%
TONNAGE

1%
VALUE

5,899 Miles of gas transmission and hazardous liquid pipelines



3.1%
TONNAGE

17.9%
VALUE

Includes shipments by multiple modes and by parcel delivery services, U.S. Postal Service, or couriers (capped at 150 pounds). This category is not limited to containerized or trailer-on-flatcar shipments.

FLORIDA COMMODITY FLOWS (2018-2045)



IMPORTS



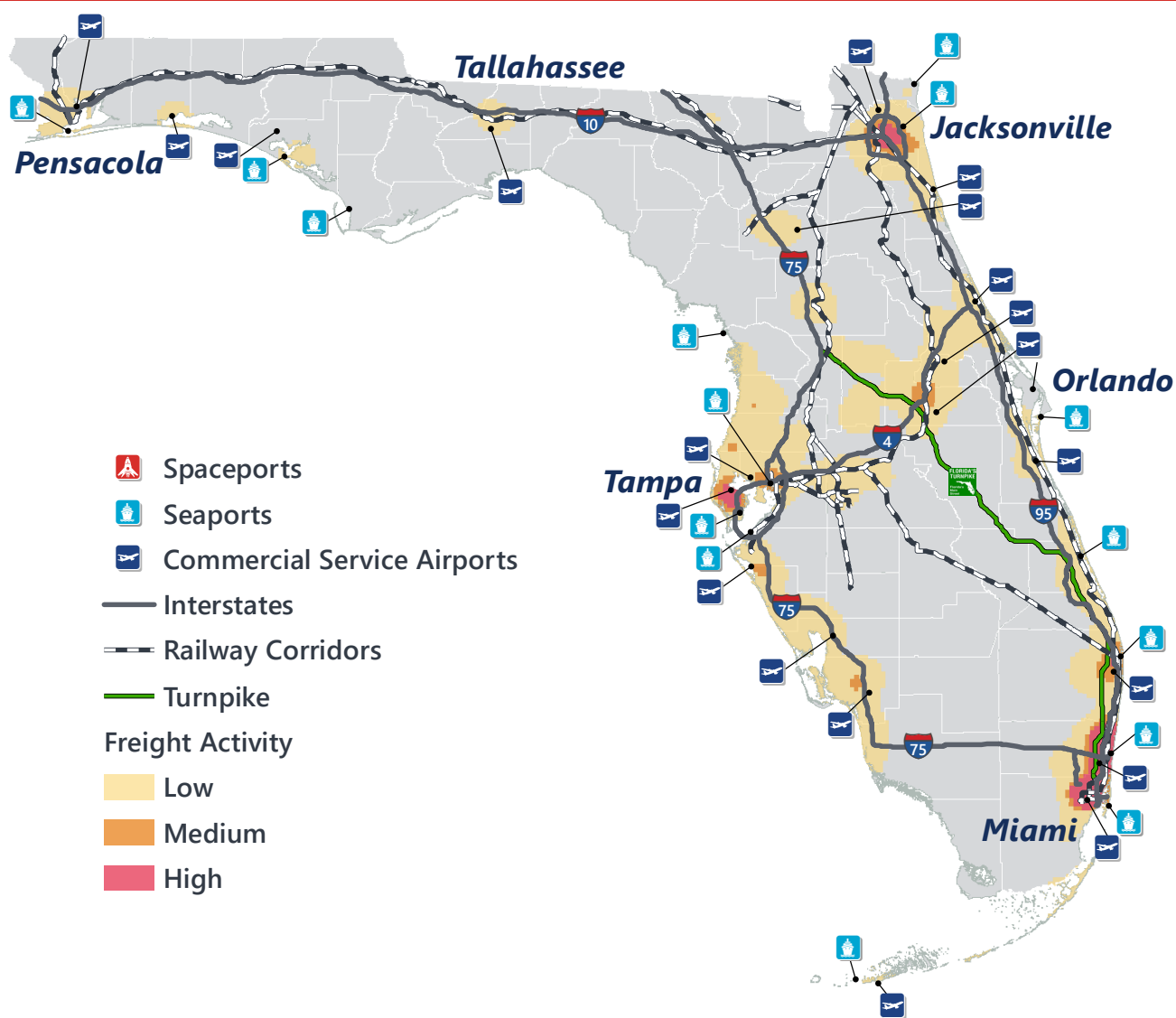
WITHIN FL



EXPORTS

	2018	2045	2018	2045	2018	2045
TONNAGE	142M	190M	656M	761M	57M	103M
VALUE	\$321B	\$690B	\$402B	\$844B	\$180B	\$606B

Freight Analysis Framework (FAF) 4.5.1.



Rickey Fitzgerald
Manager, Freight & Multimodal Operations
 Florida Department of Transportation
 605 Suwannee Street, Tallahassee, FL 32399
 Rickey.Fitzgerald@dot.state.fl.us
 850.414.4702