

FREIGHT AND LOGISTICS OVERVIEW

FEBRUARY 2021

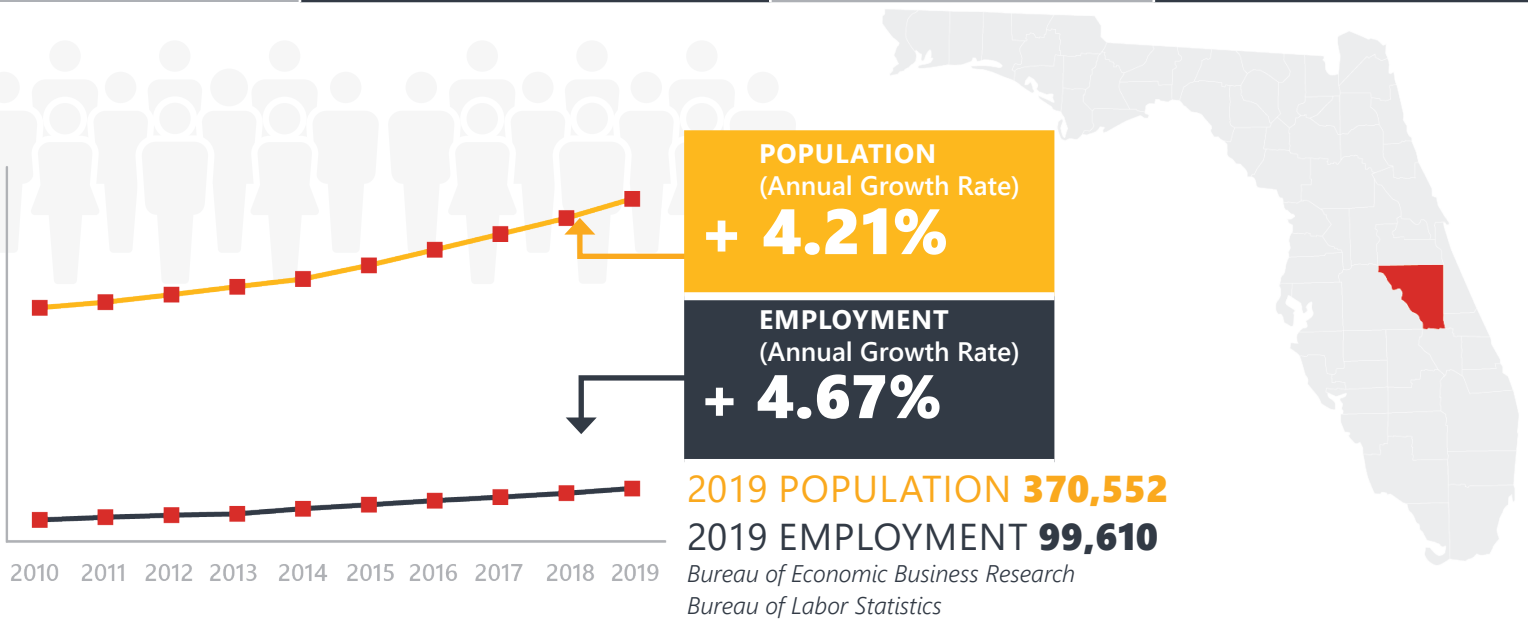
OSCEOLA COUNTY



Mission: The department will provide a safe transportation system that ensures the mobility of people and goods, enhances economic prosperity, and preserves the quality of our environment and communities.

OSCEOLA COUNTY HIGHLIGHTS

"RISING SUN"		AREA (SQ . MILES)	1,506
COUNTY SEAT	KISSIMMEE	LARGEST CITY (SIZE)	KISSIMMEE



LARGEST INDUSTRY SECTORS BY EMPLOYMENT (2019)

Office of Economic and Demographic Research



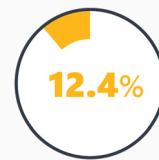
Leisure and Hospitality



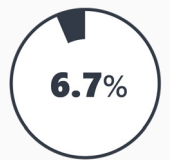
Trade, Transportation & Utilities



Education & Health Services



Professional & Business Services



Construction

FASTEST GROWING INDUSTRIES (2010-2019)

PROFESSIONAL AND BUSINESS SERVICES	JOBS ADDED	6,995
EDUCATION AND HEALTH SERVICES		6,192
TRADE, TRANSPORTATION, AND UTILITIES		5,985
LEISURE AND HOSPITALITY		3,451
CONSTRUCTION		2,966

Bureau of Labor Statistics

DID YOU KNOW?

Kissimmee is a family-oriented destination known for its off-the-beaten-path adventures, endless sunshine and proximity to world-famous theme parks.

NeoCity, an Osceola County initiative, is poised to serve as catalyst for high-tech innovation and creation, including jobs and capital investment.

Osceola's historical investments in ranching and citrus are still very strong, while light industry and service enterprises are growing due to the transportation advantages and proximity of the Orlando area.

COMMODITY FLOW HIGHLIGHTS



IMPORTS

WITHIN COUNTY

EXPORTS

2018

2045

2018

2045

2018

2045

Tonnage:	4.49 M	8.95 M	0.13 M	0.63 M	1.27 M	3.72 M
Value:	\$ 2.67 B	\$ 5.08 B	\$ 0.05 B	\$ 0.19 B	\$ 0.67 B	\$ 1.46 B



TOP COMMODITY by Tonnage, 2018



Nonmetallic Minerals	1,122,364
Waste or Scrap Materials	977,835
Clay, Concrete, Glass, Stone	690,436
Petroleum or Coal Products	558,810
Warehouse, Distribution Center and Drayage Movements	492,761

Clay, Concrete, Glass, Stone	616,037
Waste or Scrap Materials	256,017
Food or Kindred Products	189,369
Lumber or Wood Products	99,014
Farm Products	67,211



TOP COMMODITY by Value, 2018

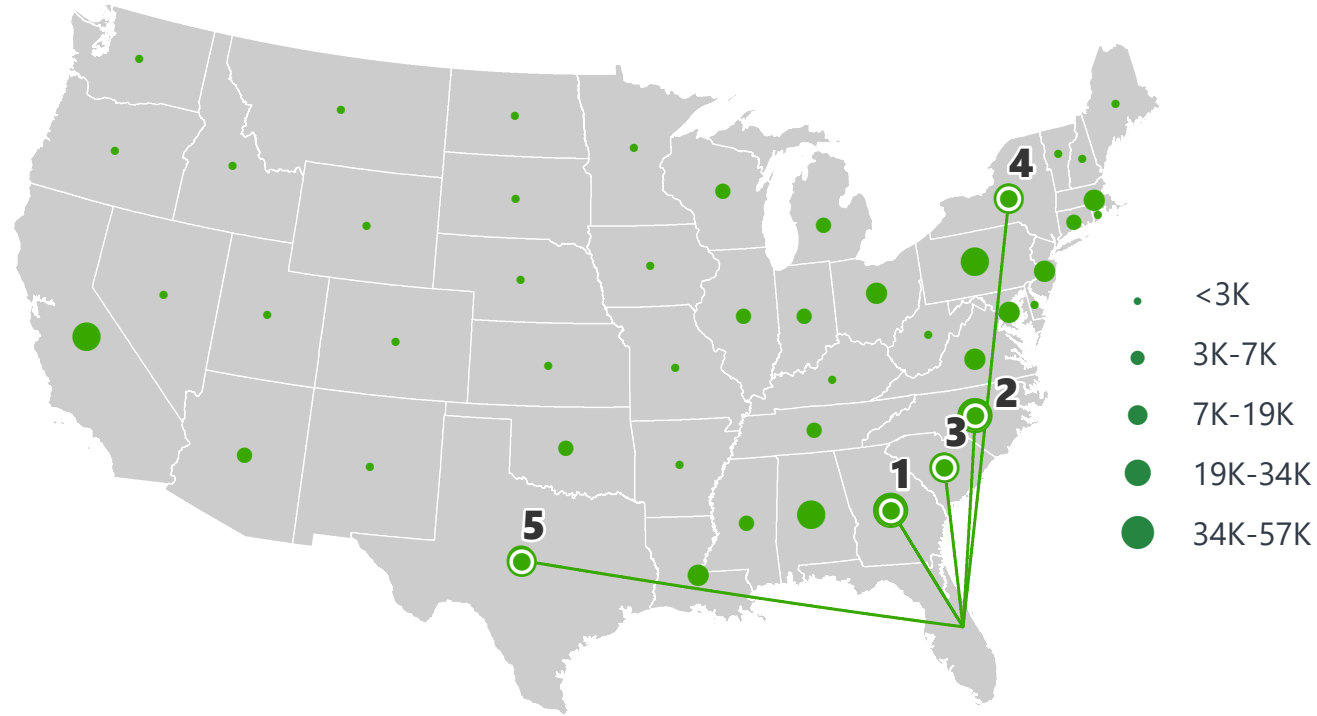


Warehouse, Distribution Center and Drayage Movements	\$ 685,213,746
Transportation Equipment	\$ 294,280,555
Petroleum or Coal Products	\$ 287,941,122
Food or Kindred Products	\$ 281,903,790
Waste or Scrap Materials	\$ 257,606,502

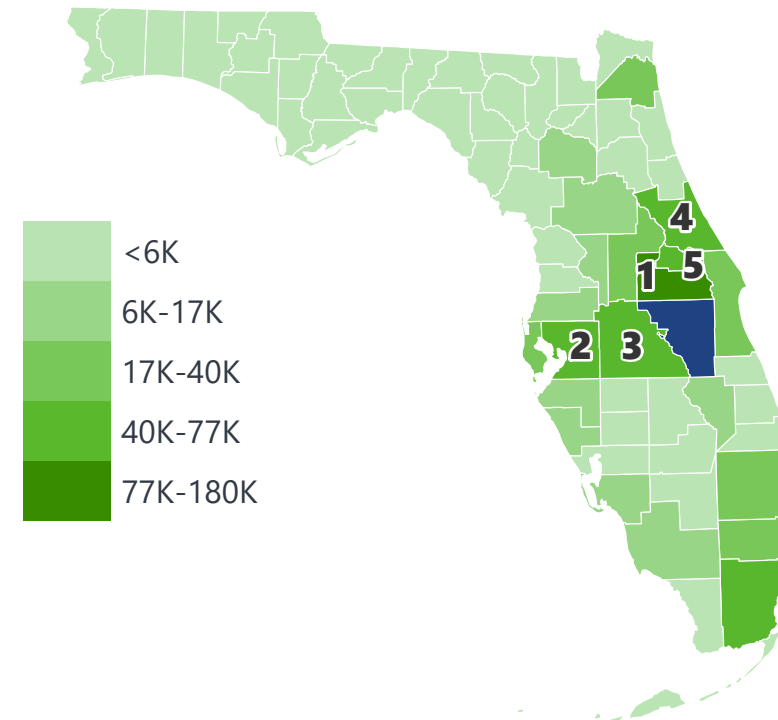
Machinery	\$ 198,458,461
Food or Kindred Products	\$ 113,264,783
Clay, Concrete, Glass, Stone	\$ 92,869,537
Lumber or Wood Products	\$ 74,692,121
Waste or Scrap Materials	\$ 67,920,514

OSCEOLA COUNTY EXPORTS AND IMPORTS

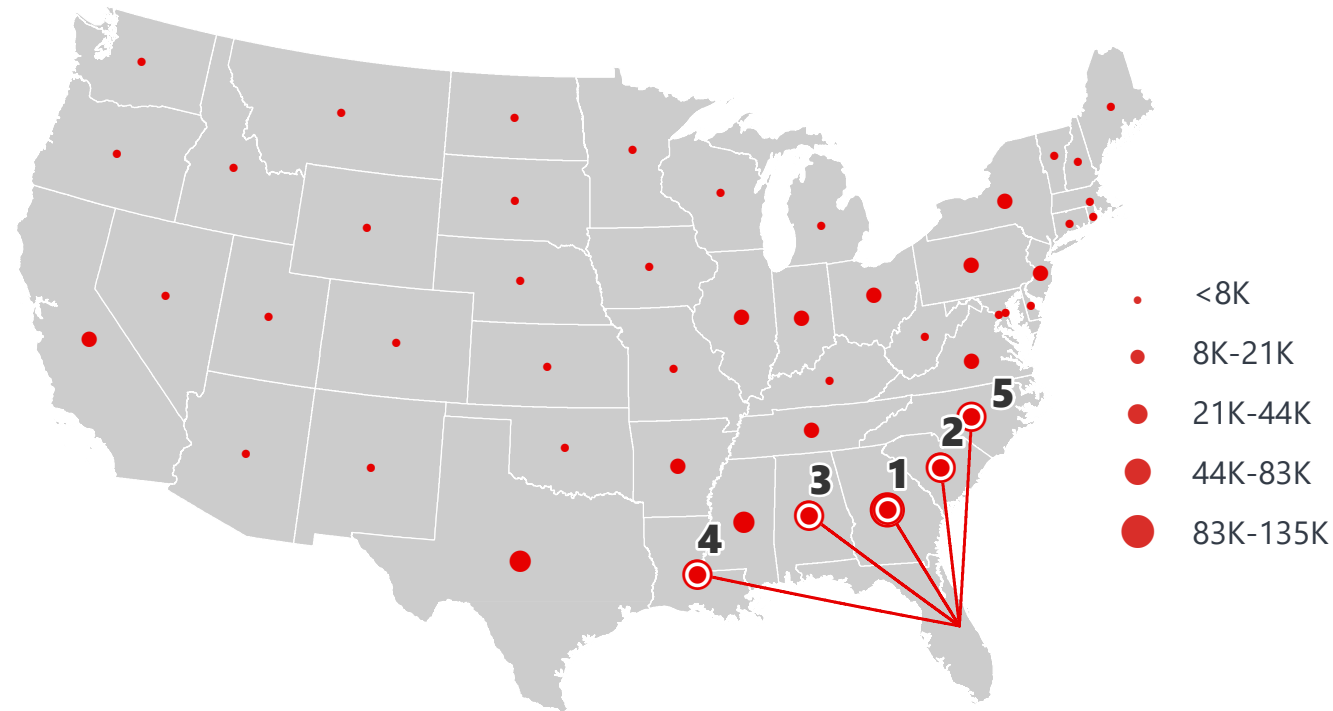
DOMESTIC EXPORTS (TONS)



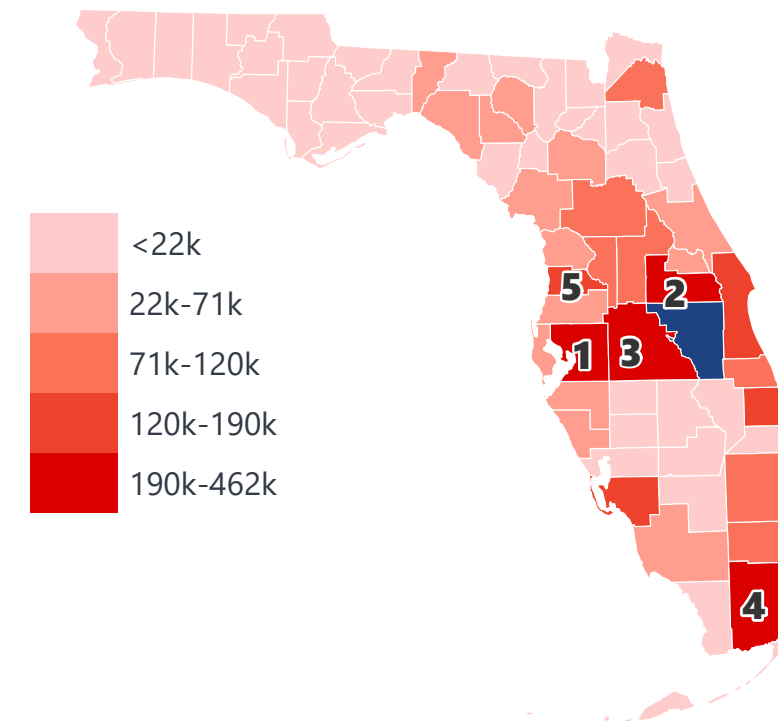
INTRASTATE EXPORTS (TONS)



DOMESTIC IMPORTS (TONS)



INTRASTATE IMPORTS (TONS)



DOMESTIC EXPORTS (TONNAGE)

1	Georgia	56,665
2	North Carolina	43,688
3	South Carolina	33,371
4	New York	30,871
5	Texas	26,885

INTRASTATE EXPORTS (TONNAGE)

1	Orange	179,429
2	Hillsborough	77,025
3	Polk	56,875
4	Volusia	55,247
5	Seminole	47,677

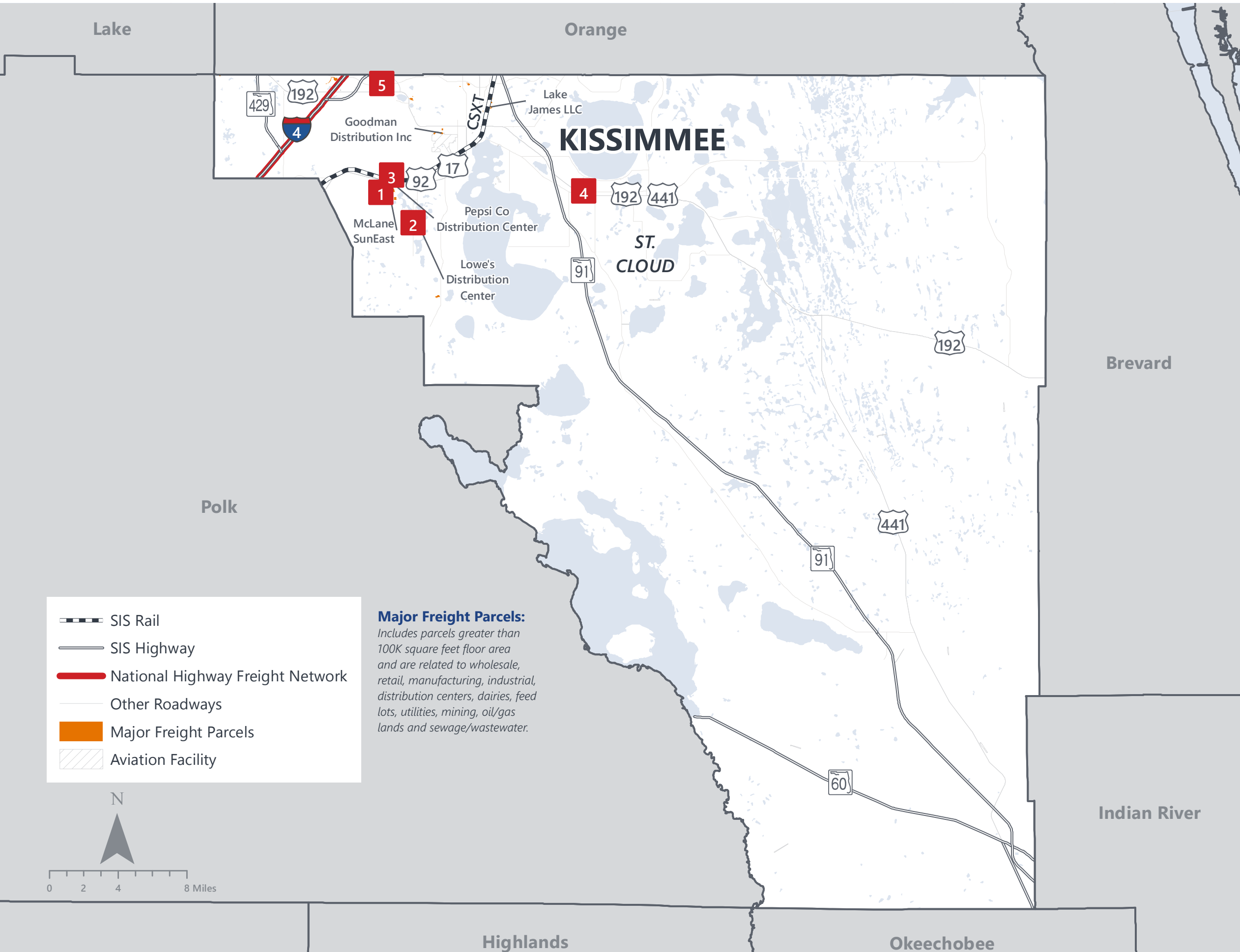
DOMESTIC IMPORTS (TONNAGE)

1	Georgia	130,613
2	South Carolina	82,211
3	Alabama	68,351
4	Louisiana	56,229
5	North Carolina	43,613

INTRASTATE IMPORTS (TONNAGE)

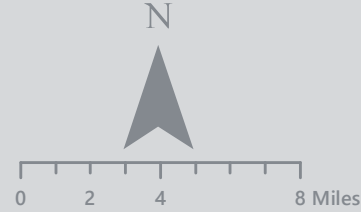
1	Hillsborough	461,861
2	Orange	439,053
3	Polk	300,289
4	Miami-Dade	297,210
5	Hernando	191,287

OSCEOLA COUNTY FREIGHT INFRASTRUCTURE



- SIS Rail
- SIS Highway
- National Highway Freight Network
- Other Roadways
- Major Freight Parcels
- Aviation Facility

Major Freight Parcels:
Includes parcels greater than 100K square feet floor area and are related to wholesale, retail, manufacturing, industrial, distribution centers, dairies, feed lots, utilities, mining, oil/gas lands and sewage/wastewater.



LARGEST FREIGHT EMPLOYERS

1	McLane SunEast	1K-2K
2	Lowe's	600-700
3	SVC Manufacturing	100-200
4	Mercury Marine	100-200
5	USPS	100-200

MAJOR FREIGHT LAND USES

12.2 M SQ.FT Floor Area	
72.11%	Warehousing and distribution centers
15.04%	Light manufacturing
4.50%	Wholesale outlets, produce houses, manufacturing outlets
3.50%	Canneries, bottlers and brewers, distilleries, wineries
1.58%	Other food processing
145.3 M SQ.FT LAND AREA	
33.08%	Warehousing and distribution centers
28.72%	Sewage disposal and waste land
22.67%	Utilities
7.58%	Light manufacturing
2.83%	Minerals processing and construction material plants

Florida Department of Economic Opportunity, 2018
Florida Department of Revenue, 2019

MAJOR COUNTY COMMODITIES



IMPORTS



TOP COMMODITY by Tonnage, 2018 (relative to Florida)

FL Rank	Commodity	% Florida Share
6	Waste or Scrap Materials	6.21%
13	Primary Metal Products	2.46%
17	Clay, Concrete, Glass, Stone	1.66%
23	Warehouse, Distribution Center and Drayage Movements	1.17%
24	Nonmetallic Minerals	0.93%

EXPORTS



FL Rank	Commodity	% Florida Share
11	Machinery	2.43%
24	Clay, Concrete, Glass, Stone	1.25%
14	Food or Kindred Products	1.24%
31	Lumber or Wood Products	1.06%
25	Waste or Scrap Materials	0.96%

TOP COMMODITY by Value, 2018 (relative to Florida)

FL Rank	Commodity	% Florida Share
7	Waste or Scrap Materials	6.46%
16	Primary Metal Products	1.68%
20	Clay, Concrete, Glass, Stone	1.32%
23	Lumber or Wood Products	1.00%
20	Warehouse, Distribution Center and Drayage Movements	0.88%

FL Rank	Commodity	% Florida Share
10	Machinery	1.88%
21	Lumber or Wood Products	1.49%
23	Clay, Concrete, Glass, Stone	1.22%
24	Waste or Scrap Materials	1.02%
19	Food or Kindred Products	0.74%



TRANSPORTATION STATISTICS AND FREIGHT MOVEMENT BY MODE



98.18%
TONNAGE
96.58%
VALUE

753 K | Daily Truck Miles Traveled
1.51 | Planning Time Index
1,569 | Public Roadway Mileage



0.00%
TONNAGE
0.00%
VALUE

59 Miles | Distance from closest seaport
(Port Canaveral)



1.81%
TONNAGE
3.41%
VALUE

14.18 | Class I Mainline Miles (CFRC, CSX)
- Class II Mainline Miles
- Class III Mainline Miles



0.00%
TONNAGE
0.00%
VALUE

1 Major Airport | Kissimmee Gateway Airport

FLORIDA HIGHLIGHTS

3rd most populous US State
\$1T Gross Domestic Product
4th Largest US Economy and 17th Largest Economy in World
Nation's 3rd largest workforce
1 in 5 U.S. exporters are located in Florida
\$153B International Trade
1.76M jobs supported by Trade, Transportation and Utilities industry sector
1.25M jobs supported by Leisure and Hospitality industry sector
131M annual visitors

CAPITAL	TALLAHASSEE
AREA (SQ . MILES)	53,624
LARGEST CITY (SIZE)	JACKSONVILLE
POPULATION (2019)	21,208,589
ANNUAL POP GROWTH RATE (2010-2019)	1.4%
EMPLOYMENT (2019)	8,884,065
ANNUAL EMP GROWTH RATE (2010-2019)	2.8%

Bureau of Economic Business Research, Bureau of Labor Statistics

DOMESTIC IMPORTS

1	GEORGIA	\$44B
2	CALIFORNIA	\$29B
3	TEXAS	\$26B
4	ALABAMA	\$18B
5	ILLINOIS	\$18B

INTERNATIONAL IMPORTS

1	CHINA	\$9.5B
2	JAPAN	\$6.5B
3	BRAZIL	\$6.4B
4	MEXICO	\$4.5B
5	CHILE	\$3.7B

DOMESTIC EXPORTS

1	GEORGIA	\$22B
2	TEXAS	\$19B
3	CALIFORNIA	\$15B
4	NORTH CAROLINA	\$12B
5	NEW YORK	\$10B

INTERNATIONAL EXPORTS

1	BRAZIL	\$13.4B
2	COLOMBIA	\$4.2B
3	ARGENTINA	\$3.6B
4	DOMINICAN REPUBLIC	\$3.1B
5	CHILE	\$3B



TRANSPORTATION STATISTICS AND FREIGHT MOVEMENT BY MODE



83%
TONNAGE

71%
VALUE

123,104 Public roadway mileage
12,130 State Highway System (SHS) mileage
30.7M Daily truck miles traveled on SHS
98 Public truck parking facilities



3.5%
TONNAGE

2.9%
VALUE

15 Deepwater seaports
4.1M Twenty-foot equivalent units (TEUs)
16.8M Annual cruise passengers



6.7%
TONNAGE

1.8%
VALUE

2,936 Miles of roads
6.9M Annual rail passenger traffic



0.1%
TONNAGE

5.4%
VALUE

129 Public use airports
20 Commercial service airports
2 Active spaceports



3.6%
TONNAGE

1%
VALUE

5,899 Miles of gas transmission and hazardous liquid pipelines



3.1%
TONNAGE

17.9%
VALUE

Includes shipments by multiple modes and by parcel delivery services, U.S. Postal Service, or couriers (capped at 150 pounds). This category is not limited to containerized or trailer-on-flatcar shipments.

FLORIDA COMMODITY FLOWS (2018-2045)



IMPORTS



WITHIN FL



EXPORTS

	2018	2045	2018	2045	2018	2045
TONNAGE	142M	190M	656M	761M	57M	103M
VALUE	\$321B	\$690B	\$402B	\$844B	\$180B	\$606B

Freight Analysis Framework (FAF) 4.5.1.



Rickey Fitzgerald
 Manager, Freight & Multimodal Operations
 Florida Department of Transportation
 605 Suwannee Street, Tallahassee, FL 32399
 Rickey.Fitzgerald@dot.state.fl.us
 850.414.4702