

# FREIGHT AND LOGISTICS OVERVIEW

FEBRUARY 2021

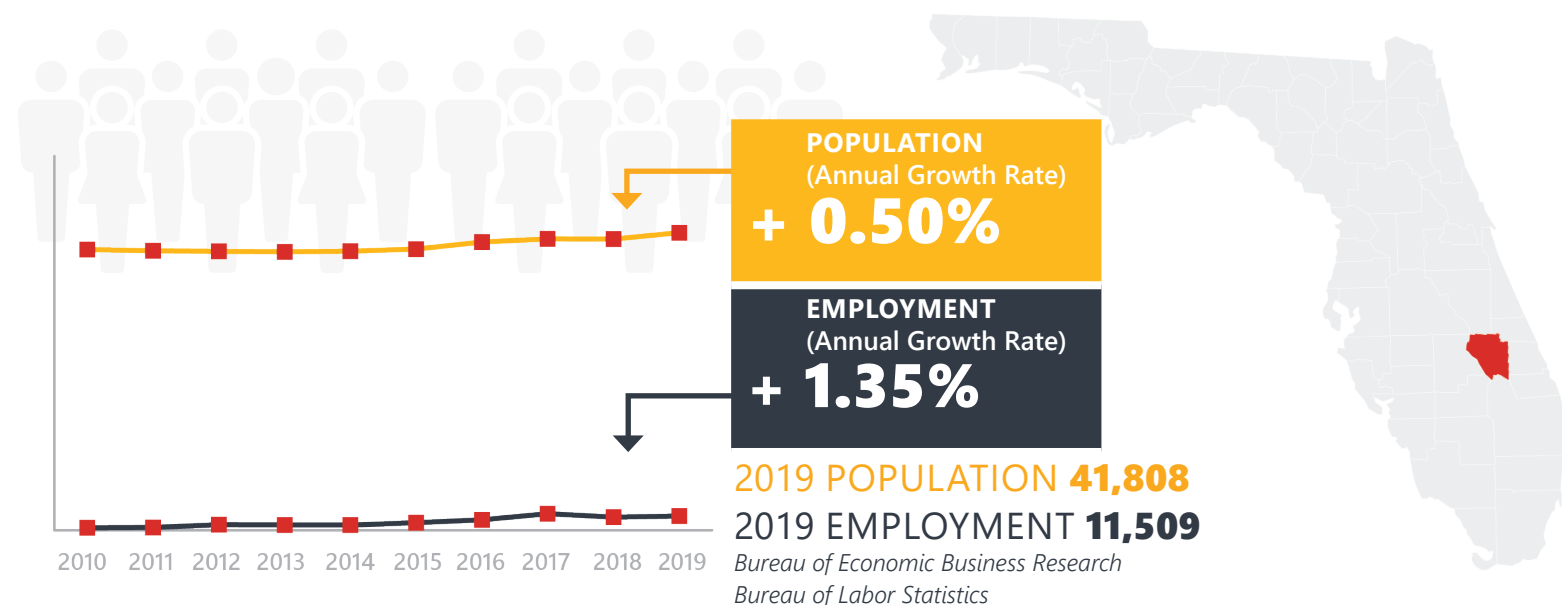
# OKEECHOBEE COUNTY



*Mission: The department will provide a safe transportation system that ensures the mobility of people and goods, enhances economic prosperity, and preserves the quality of our environment and communities.*

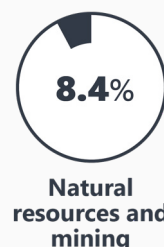
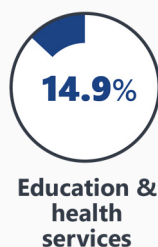
# OKEECHOBEE COUNTY HIGHLIGHTS

"BIG WATER"		AREA (SQ . MILES)	892
COUNTY SEAT	OKEECHOBEE	LARGEST CITY (SIZE)	OKEECHOBEE



## LARGEST INDUSTRY SECTORS BY EMPLOYMENT (2019)

*Office of Economic and Demographic Research*



## FASTEST GROWING INDUSTRIES (2010-2019)

PROFESSIONAL AND BUSINESS SERVICES	JOBS ADDED	554
LEISURE AND HOSPITALITY		370
TRADE, TRANSPORTATION, AND UTILITIES		350
CONSTRUCTION		195
EDUCATION AND HEALTH SERVICES		172

*Bureau of Labor Statistics*

## DID YOU KNOW?

The county is home to the 54,000 acre Kissimmee Prairie Preserve State Park, the largest remaining stretch of Florida dry prairie.

The county is home to many of Florida's traditional cattle ranching families. There are 65,000 head of beef cattle in the county.

Okeechobee is known as the "Speckled Perch Capital of the World", and an annual festival attracts thousands of visitors to honor the local fishing industry.



# COMMODITY FLOW HIGHLIGHTS



## IMPORTS

## WITHIN COUNTY

## EXPORTS

	2018	2045	2018	2045	2018	2045
Tonnage:	2.71 M	3.96 M	53.95 K	45.51 K	1.77 M	1.72 M
Value:	\$ 0.71 B	\$ 1.10 B	\$ 14.49 M	\$ 12.59 M	\$ 0.47 B	\$ 0.50 B



### TOP COMMODITY by Tonnage, 2018

Waste or Scrap Materials	1,604,138
Nonmetallic Minerals	485,185
Clay, Concrete, Glass, Stone	192,985
Food or Kindred Products	116,732
Petroleum or Coal Products	106,816



Clay, Concrete, Glass, Stone	797,480
Farm Products	519,754
Chemicals or Allied Products	182,995
Food or Kindred Products	159,787
Petroleum or Coal Products	60,317



### TOP COMMODITY by Value, 2018

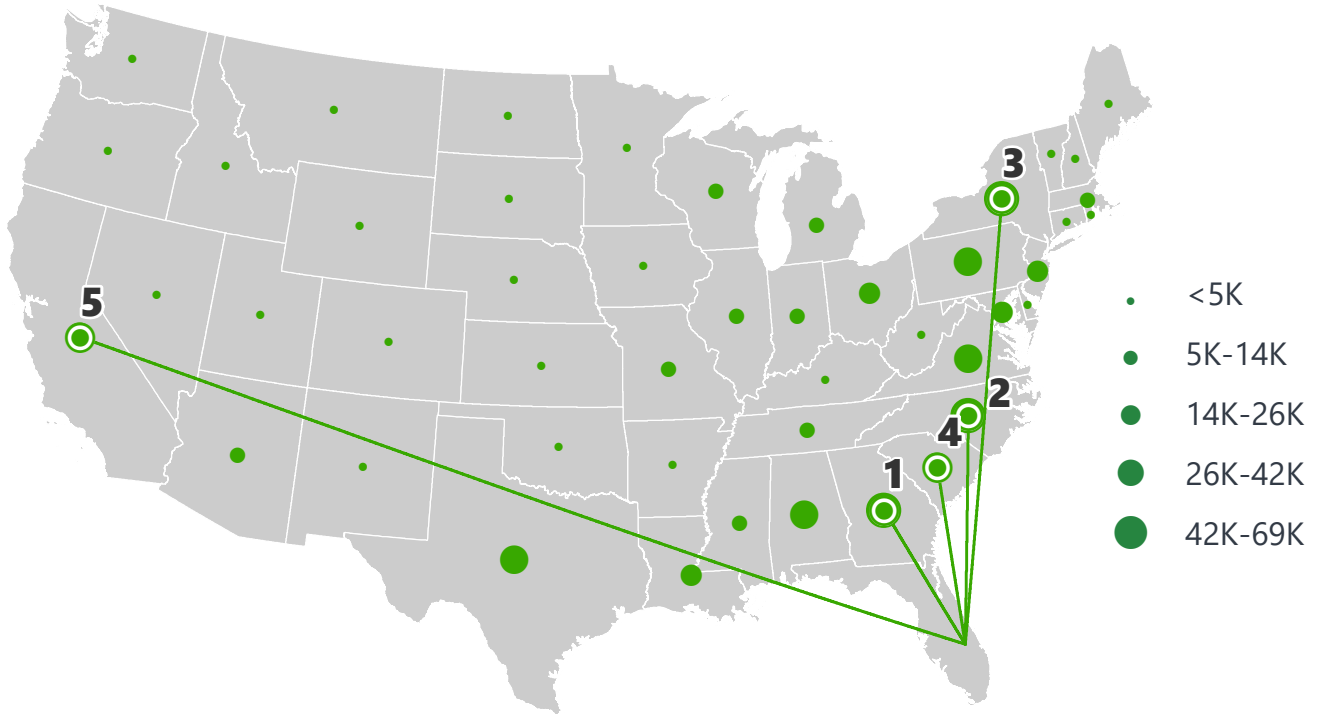
Waste or Scrap Materials	\$ 405,009,924
Warehouse, Distribution Center and Drayage Movements	\$ 68,199,135
Petroleum or Coal Products	\$ 48,574,786
Food or Kindred Products	\$ 40,296,346
Transportation Equipment	\$ 34,427,843



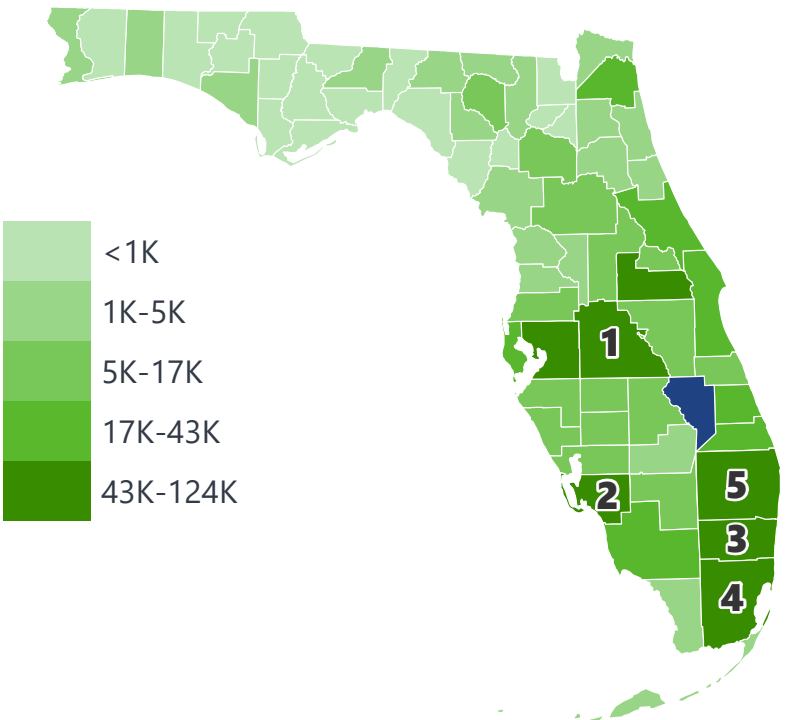
Farm Products	\$ 205,410,764
Clay, Concrete, Glass, Stone	\$ 128,536,767
Chemicals or Allied Products	\$ 60,835,406
Food or Kindred Products	\$ 33,319,773
Waste or Scrap Materials	\$ 14,170,414

# OKEECHOBEE COUNTY EXPORTS AND IMPORTS

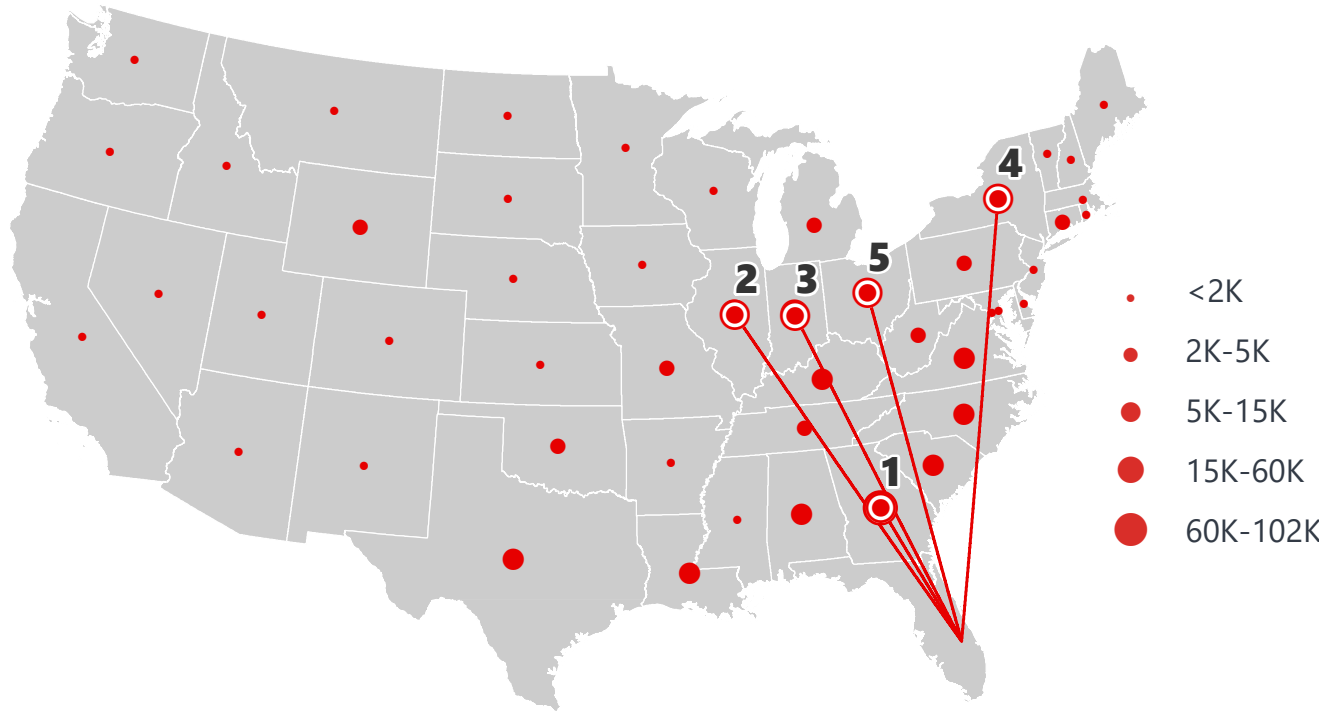
DOMESTIC EXPORTS (TONS)



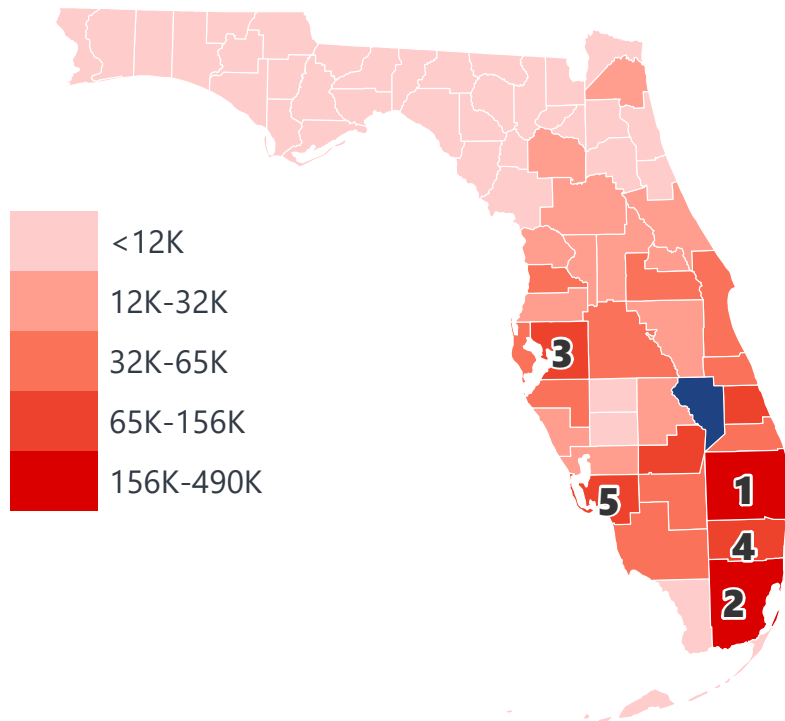
INTRASTATE EXPORTS (TONS)



DOMESTIC IMPORTS (TONS)



INTRASTATE IMPORTS (TONS)



## DOMESTIC EXPORTS (TONNAGE)

1	Georgia	68,225
2	North Carolina	60,082
3	New York	52,295
4	South Carolina	41,948
5	California	38,915

## INTRASTATE EXPORTS (TONNAGE)

1	Polk	123,565
2	Lee	123,091
3	Broward	100,540
4	Miami-Dade	99,899
5	Palm Beach	99,069

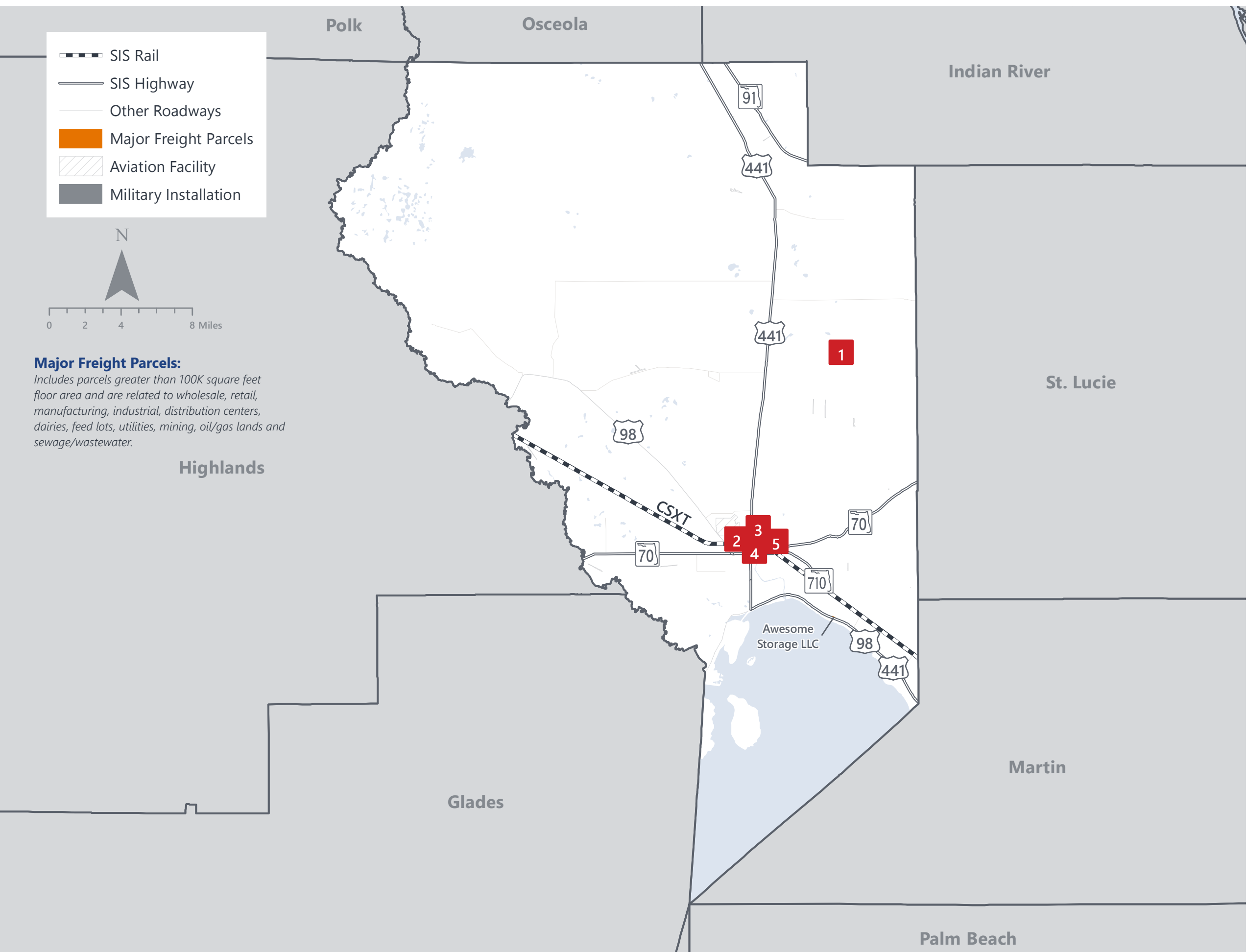
## DOMESTIC IMPORTS (TONNAGE)

1	Georgia	101,702
2	Illinois	59,190
3	Indiana	40,263
4	New York	14,919
5	Ohio	14,666

## INTRASTATE IMPORTS (TONNAGE)

1	Palm Beach	489,055
2	Miami-Dade	290,819
3	Hillsborough	156,612
4	Broward	155,329
5	Lee	145,499

# OKEECHOBEE COUNTY FREIGHT INFRASTRUCTURE



## LARGEST FREIGHT EMPLOYERS

1	SOI 23	100-200
2	Walpole Inc.	100-200
3	Boral Roofing	100-200
4	Larson Dairy	50-100
5	Charles Industries	50-100

## MAJOR FREIGHT LAND USES

2.6 M SQ.FT Floor Area

34.48%	Dairies, feed lots
29.35%	Warehousing and distribution centers
8.98%	Light manufacturing
4.94%	Open storage
4.49%	Heavy industrial

996.1 M SQ.FT LAND AREA

90.04%	Dairies, feed lots
4.60%	Utilities
3.12%	Sewage disposal and waste land
0.54%	Heavy industrial
0.47%	Warehousing and distribution centers

Florida Department of Economic Opportunity, 2018  
Florida Department of Revenue, 2019



# MAJOR COUNTY COMMODITIES



## IMPORTS



### TOP COMMODITY by Tonnage, 2018 (relative to Florida)

FL Rank	Commodity	% Florida Share
3	Waste or Scrap Materials	10.18%
27	Farm Products	0.50%
38	Clay, Concrete, Glass, Stone	0.46%
33	Food or Kindred Products	0.46%
40	Nonmetallic Minerals	0.40%

## EXPORTS



FL Rank	Commodity	% Florida Share
7	Farm Products	3.73%
21	Clay, Concrete, Glass, Stone	1.62%
13	Chemicals or Allied Products	1.35%
17	Food or Kindred Products	1.04%
21	Marine Products	0.64%

### TOP COMMODITY by Value, 2018 (relative to Florida)

FL Rank	Commodity	% Florida Share
2	Waste or Scrap Materials	10.16%
34	Farm Products	0.37%
42	Nonmetallic Minerals	0.31%
40	Clay, Concrete, Glass, Stone	0.31%
45	Petroleum or Coal Products	0.12%

FL Rank	Commodity	% Florida Share
9	Farm Products	2.30%
16	Clay, Concrete, Glass, Stone	1.69%
18	Marine Products	0.81%
22	Chemicals or Allied Products	0.37%
29	Food or Kindred Products	0.22%





# TRANSPORTATION STATISTICS AND FREIGHT MOVEMENT BY MODE



**172 K** | Daily Truck Miles Traveled  
**1.18** | Planning Time Index  
**536** | Public Roadway Mileage



**47 Miles** | Distance from closest major seaport (Port of Ft. Pierce)



**29.04** | Class I Mainline Miles (CSX)  
- Class II Mainline Miles  
- Class III Mainline Miles



**75 Miles** | Distance from closest major airport (Palm Beach International Airport)

# FLORIDA HIGHLIGHTS

**3rd most populous** US State

**\$1T Gross** Domestic Product

**4th Largest** US Economy and **17th Largest** Economy in World

Nation's **3rd largest** workforce

**1 in 5 U.S. exporters** are located in Florida

**\$153B** International Trade

**1.76M jobs supported** by Trade, Transportation and Utilities industry sector

**1.25M jobs supported** by Leisure and Hospitality industry sector

**131M** annual visitors

CAPITAL **TALLAHASSEE**

AREA  
(SQ. MILES) **53,624**

LARGEST  
CITY (SIZE) **JACKSONVILLE**

POPULATION  
(2019) **21,208,589**

ANNUAL POP  
GROWTH RATE  
(2010-2019) **1.4%**

EMPLOYMENT  
(2019) **8,884,065**

ANNUAL EMP  
GROWTH RATE  
(2010-2019) **2.8%**

*Bureau of Economic Business Research,  
Bureau of Labor Statistics*

## DOMESTIC IMPORTS

<b>1</b>	<b>GEORGIA</b>	\$44B
<b>2</b>	<b>CALIFORNIA</b>	\$29B
<b>3</b>	<b>TEXAS</b>	\$26B
<b>4</b>	<b>ALABAMA</b>	\$18B
<b>5</b>	<b>ILLINOIS</b>	\$18B

## DOMESTIC EXPORTS

<b>1</b>	<b>GEORGIA</b>	\$22B
<b>2</b>	<b>TEXAS</b>	\$19B
<b>3</b>	<b>CALIFORNIA</b>	\$15B
<b>4</b>	<b>NORTH CAROLINA</b>	\$12B
<b>5</b>	<b>NEW YORK</b>	\$10B

## INTERNATIONAL IMPORTS

<b>1</b>	<b>CHINA</b>	\$9.5B
<b>2</b>	<b>JAPAN</b>	\$6.5B
<b>3</b>	<b>BRAZIL</b>	\$6.4B
<b>4</b>	<b>MEXICO</b>	\$4.5B
<b>5</b>	<b>CHILE</b>	\$3.7B

## INTERNATIONAL EXPORTS

<b>1</b>	<b>BRAZIL</b>	\$13.4B
<b>2</b>	<b>COLOMBIA</b>	\$4.2B
<b>3</b>	<b>ARGENTINA</b>	\$3.6B
<b>4</b>	<b>DOMINICAN REPUBLIC</b>	\$3.1B
<b>5</b>	<b>CHILE</b>	\$3B



# TRANSPORTATION STATISTICS AND FREIGHT MOVEMENT BY MODE



**83%**  
TONNAGE

**71%**  
VALUE

**123,104** Public roadway mileage  
**12,130** State Highway System (SHS) mileage  
**30.7M** Daily truck miles traveled on SHS  
**98** Public truck parking facilities



**3.5%**  
TONNAGE

**2.9%**  
VALUE

**15** Deepwater seaports  
**4.1M** Twenty-foot equivalent units (TEUs)  
**16.8M** Annual cruise passengers



**6.7%**  
TONNAGE

**1.8%**  
VALUE

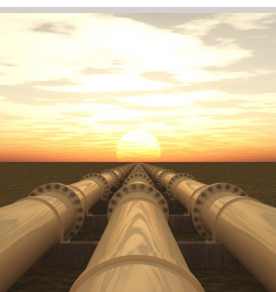
**2,936** Miles of roads  
**6.9M** Annual rail passenger traffic



**0.1%**  
TONNAGE

**5.4%**  
VALUE

**129** Public use airports  
**20** Commercial service airports  
**2** Active spaceports



**3.6%**  
TONNAGE

**1%**  
VALUE

**5,899** Miles of gas transmission and hazardous liquid pipelines



**3.1%**  
TONNAGE

**17.9%**  
VALUE

Includes shipments by multiple modes and by parcel delivery services, U.S. Postal Service, or couriers (capped at 150 pounds). This category is not limited to containerized or trailer-on-flatcar shipments.

# FLORIDA COMMODITY FLOWS (2018-2045)



IMPORTS



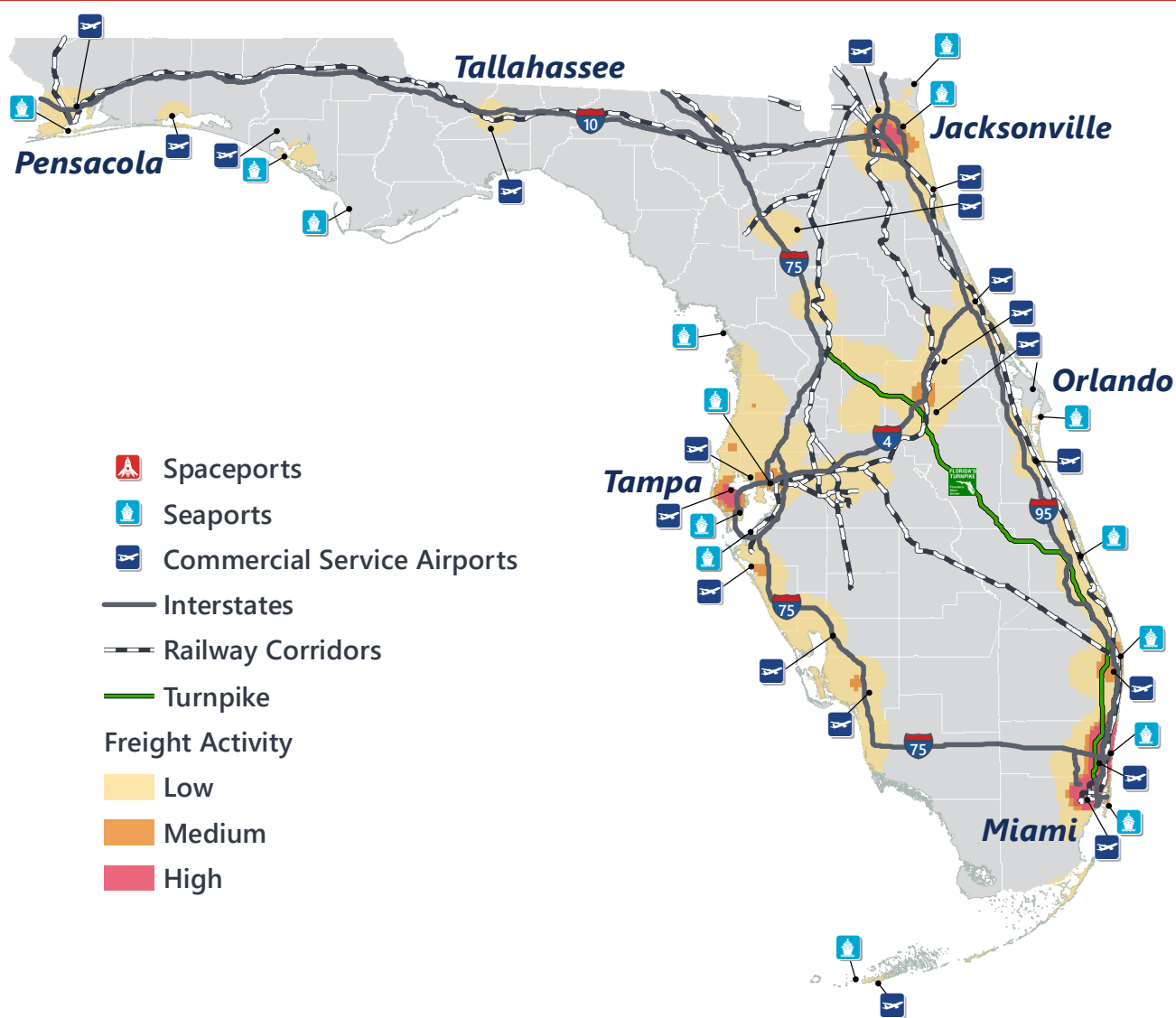
WITHIN FL



EXPORTS

	2018	2045	2018	2045	2018	2045
TONNAGE	142M	190M	656M	761M	57M	103M
VALUE	\$321B	\$690B	\$402B	\$844B	\$180B	\$606B

Freight Analysis Framework (FAF) 4.5.1.



**Rickey Fitzgerald**  
**Manager, Freight & Multimodal Operations**  
 Florida Department of Transportation  
 605 Suwannee Street, Tallahassee, FL 32399  
 Rickey.Fitzgerald@dot.state.fl.us  
 850.414.4702