

FREIGHT AND LOGISTICS OVERVIEW

FEBRUARY 2021

NASSAU COUNTY



Mission: The department will provide a safe transportation system that ensures the mobility of people and goods, enhances economic prosperity, and preserves the quality of our environment and communities.

NASSAU COUNTY HIGHLIGHTS

"GATEWAY TO FLORIDA'S EAST COAST"

AREA (SQ . MILES)

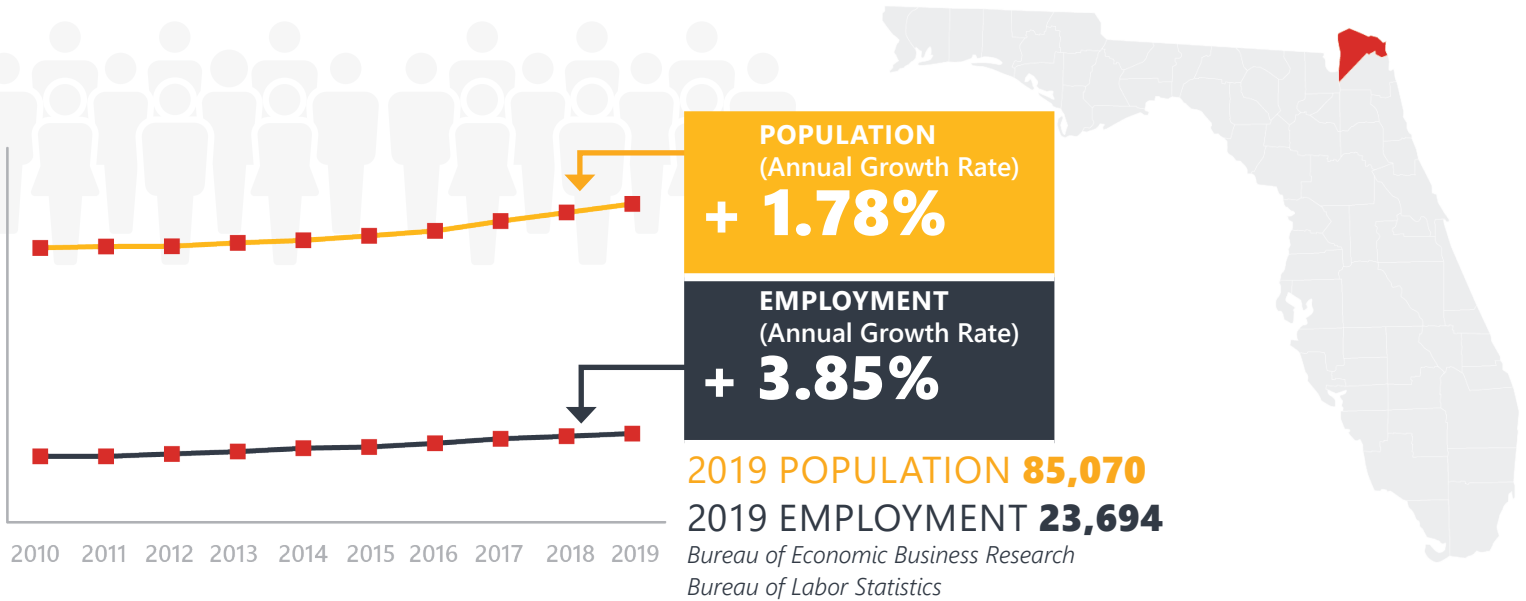
726

COUNTY SEAT

FERNANDINA BEACH

LARGEST CITY (SIZE)

FERNANDINA BEACH

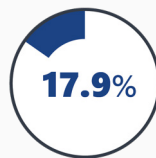


LARGEST INDUSTRY SECTORS BY EMPLOYMENT (2019)

Office of Economic and Demographic Research



Leisure & hospitality



Trade, transportation & utilities



Professional & business services



Education & health services



Manufacturing

FASTEST GROWING INDUSTRIES (2010-2019)

LEISURE AND HOSPITALITY	JOBS ADDED	1,646
PROFESSIONAL AND BUSINESS SERVICES		1,537
TRADE, TRANSPORTATION, AND UTILITIES		703
CONSTRUCTION		592
EDUCATION AND HEALTH SERVICES		518

Bureau of Labor Statistics

DID YOU KNOW?

Amelia Island, of Nassau County, is the only place in the United States to have been under the influence of 8 different flags. Amelia Island is known as the "Isle of 8 Flags".

Hilliard is the home of one of Florida's last remaining public grass aviation landing strips and the Federal Aviation Authority's Southeastern control center.

Fernandina Beach hosts the Isle of Eight Flags Shrimp Festival, attracting 100,000+ people for the celebration in early May.

COMMODITY FLOW HIGHLIGHTS



IMPORTS

WITHIN COUNTY

EXPORTS

2018

2045

2018

2045

2018

2045

Tonnage:	2.12 M	3.6 M	51.84 K	71.05 K	1.32 M	1.25 M
Value:	\$ 1.16 B	\$ 2.02 B	\$ 13.33 M	\$ 18.78 M	\$ 0.81 B	\$ 0.87 B



TOP COMMODITY by Tonnage, 2018



Waste or Scrap Materials	1,027,616
Lumber or Wood Products	261,578
Petroleum or Coal Products	174,886
Warehouse, Distribution Center and Drayage Movements	164,438
Clay, Concrete, Glass, Stone	128,265

Pulp, Paper or Allied Products	645,405
Lumber or Wood Products	529,208
Waste or Scrap Materials	88,634
Farm Products	16,864
Warehouse, Distribution Center and Drayage Movements	14,503



TOP COMMODITY by Value, 2018

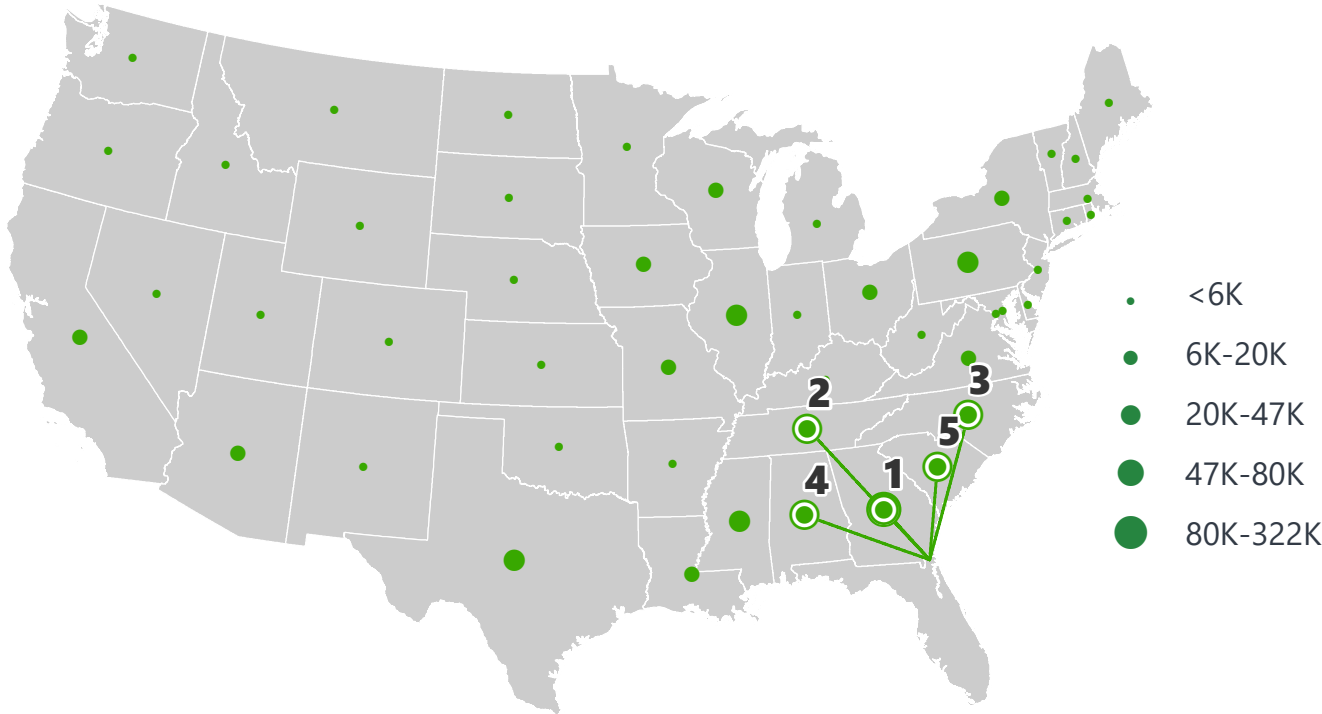


Waste or Scrap Materials	\$ 274,159,019
Warehouse, Distribution Center and Drayage Movements	\$ 250,053,831
Petroleum or Coal Products	\$ 98,969,184
Transportation Equipment	\$ 93,456,517
Lumber or Wood Products	\$ 80,700,970

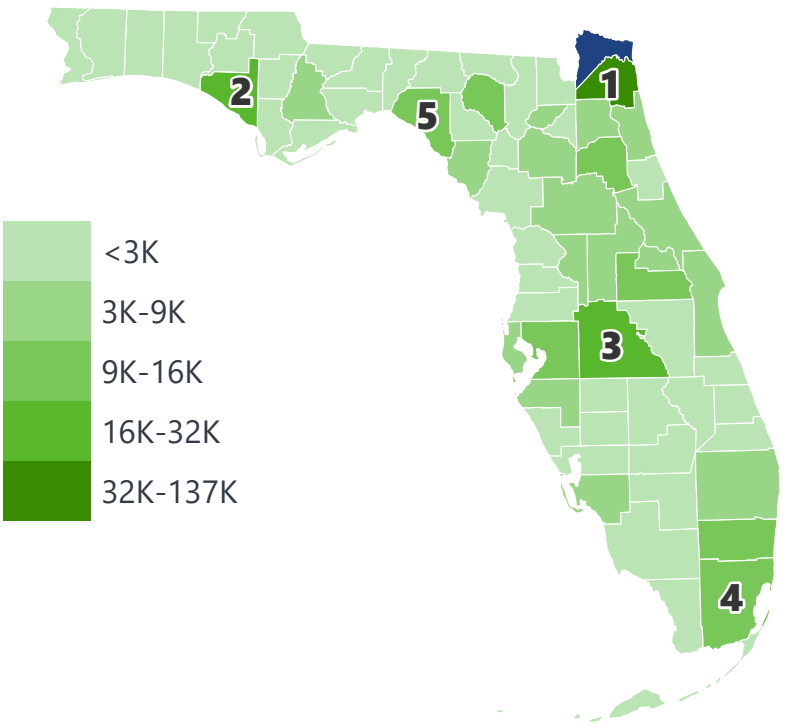
Pulp, Paper or Allied Products	\$ 538,260,048
Lumber or Wood Products	\$ 121,887,788
Warehouse, Distribution Center and Drayage Movements	\$ 47,379,475
Rubber or Misc. Plastics	\$ 30,288,969
Waste or Scrap Materials	\$ 23,596,826

NASSAU COUNTY EXPORTS AND IMPORTS

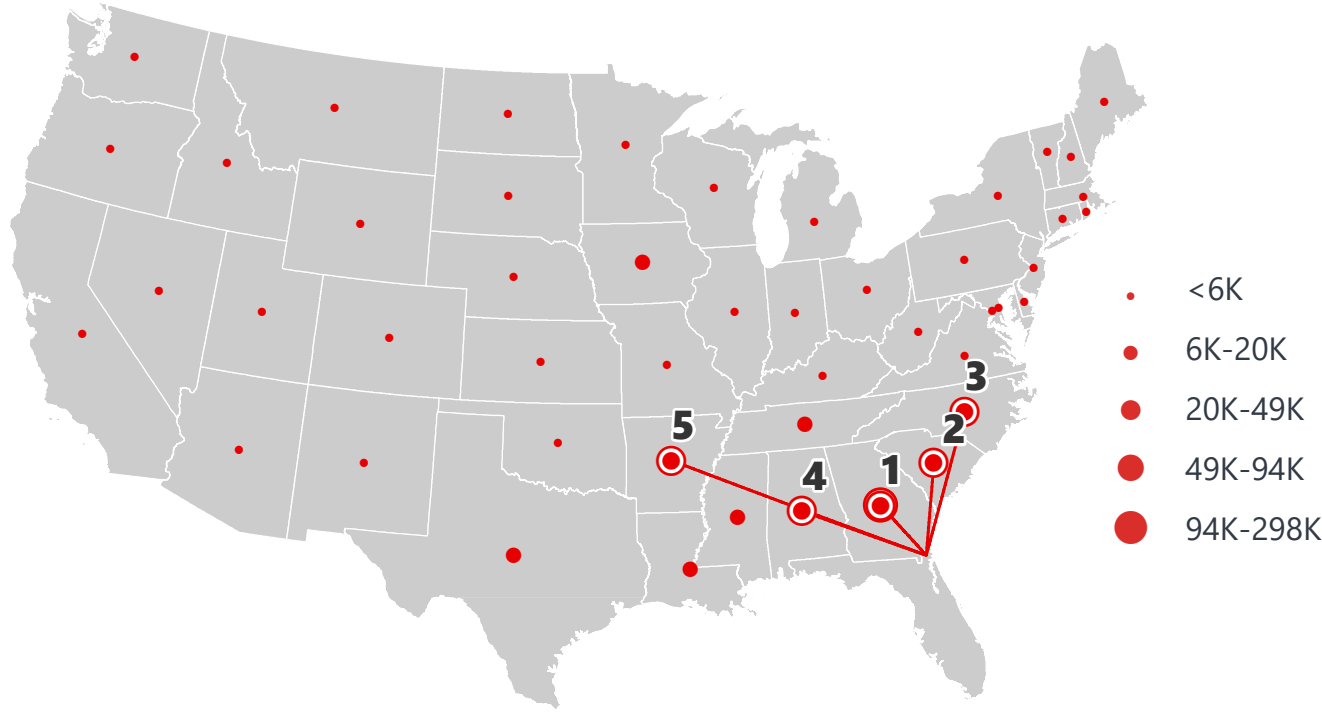
DOMESTIC EXPORTS (TONS)



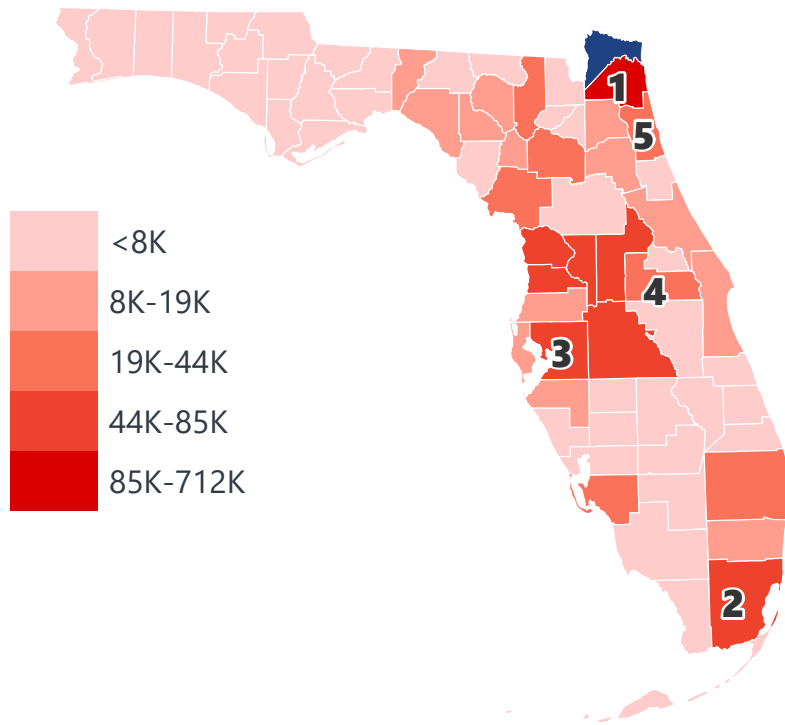
INTRASTATE EXPORTS (TONS)



DOMESTIC IMPORTS (TONS)



INTRASTATE IMPORTS (TONS)



DOMESTIC EXPORTS (TONNAGE)

1	Georgia	321,214
2	Tennessee	79,835
3	North Carolina	78,066
4	Alabama	69,576
5	South Carolina	46,634

INTRASTATE EXPORTS (TONNAGE)

1	Duval	136,367
2	Bay	31,812
3	Polk	28,339
4	Miami-Dade	16,195
5	Taylor	13,207

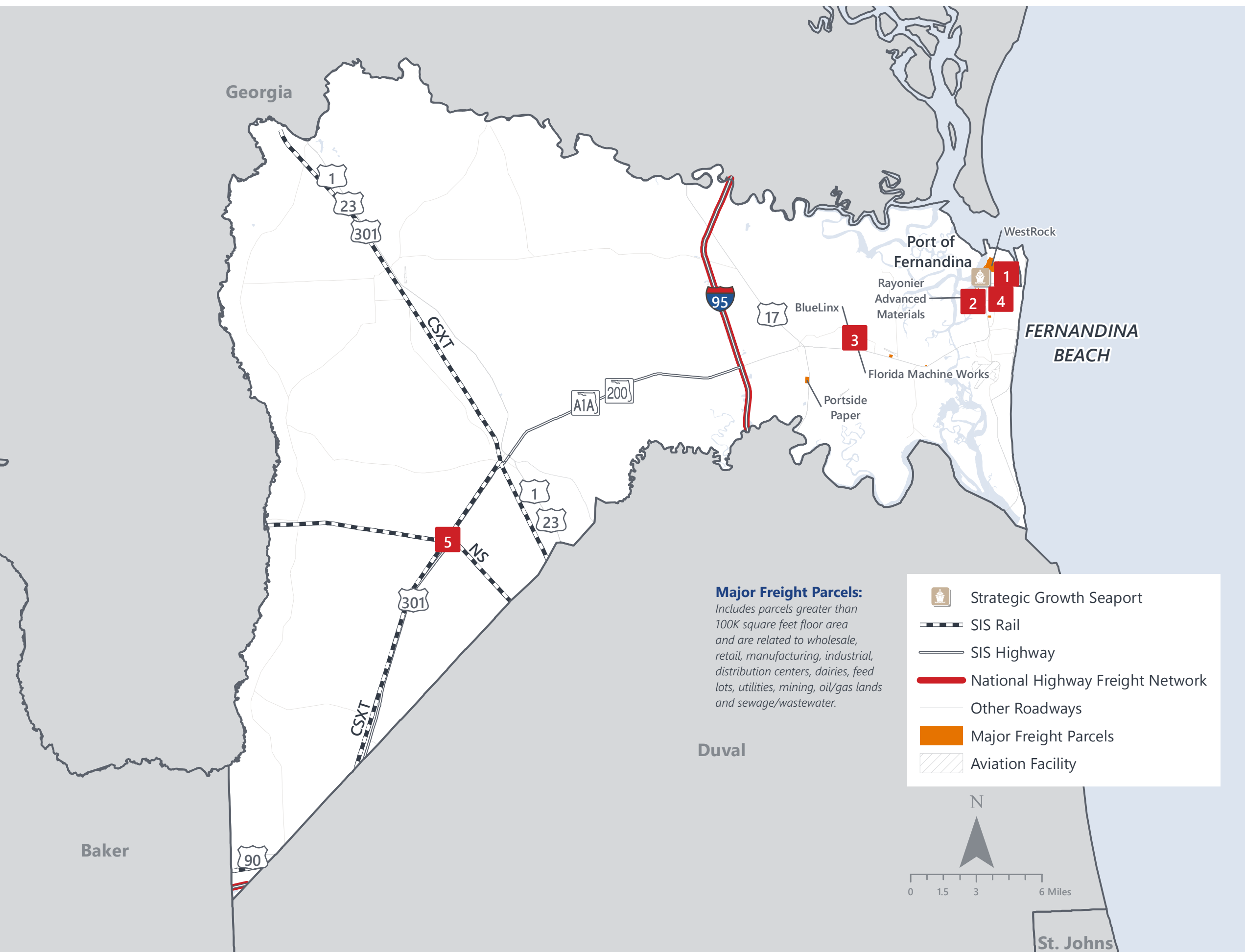
DOMESTIC IMPORTS (TONNAGE)

1	Georgia	297,865
2	South Carolina	93,505
3	North Carolina	48,752
4	Alabama	35,861
5	Arkansas	20,360

INTRASTATE IMPORTS (TONNAGE)

1	Duval	711,213
2	Miami-Dade	85,097
3	Hillsborough	58,648
4	Orange	44,477
5	St. Johns	39,548

NASSAU COUNTY FREIGHT INFRASTRUCTURE



LARGEST FREIGHT EMPLOYERS

1	Rock Tenn Services	400-500
2	Rayonier Performance	200-300
3	Masonite Corp.	100-200
4	WestRock	100-200
5	Mulch Mfg.	50-100

MAJOR FREIGHT LAND USES

6.4 M SQ.FT Floor Area

49.41%	Warehousing and distribution centers
36.71%	Heavy industrial
6.51%	Light manufacturing
4.01%	Airports, bus terminals and marine terminals
1.70%	Utilities

355.4 M SQ.FT LAND AREA

72.40%	Sewage disposal and waste land
15.61%	Utilities
5.93%	Heavy industrial
3.31%	Warehousing and distribution centers
1.17%	Light manufacturing

Florida Department of Economic Opportunity, 2018
Florida Department of Revenue, 2019

MAJOR COUNTY COMMODITIES



IMPORTS



TOP COMMODITY by Tonnage, 2018 (relative to Florida)

FL Rank	Commodity	% Florida Share
5	Waste or Scrap Materials	6.52%
9	Forest Products	4.64%
14	Lumber or Wood Products	1.95%
22	Tobacco Products	0.81%
21	Pulp, Paper or Allied Products	0.79%

EXPORTS



FL Rank	Commodity	% Florida Share
5	Pulp, Paper or Allied Products	11.53%
4	Lumber or Wood Products	5.68%
17	Rubber or Misc. Plastics	0.71%
34	Forest Products	0.58%
39	Waste or Scrap Materials	0.33%

TOP COMMODITY by Value, 2018 (relative to Florida)

FL Rank	Commodity	% Florida Share
6	Waste or Scrap Materials	6.88%
9	Forest Products	4.91%
22	Lumber or Wood Products	1.03%
21	Tobacco Products	0.89%
22	Pulp, Paper or Allied Products	0.67%

FL Rank	Commodity	% Florida Share
3	Pulp, Paper or Allied Products	9.61%
15	Lumber or Wood Products	2.43%
17	Rubber or Misc. Plastics	0.63%
34	Forest Products	0.56%
41	Waste or Scrap Materials	0.35%



TRANSPORTATION STATISTICS AND FREIGHT MOVEMENT BY MODE



255 K | Daily Truck Miles Traveled
1.26 | Planning Time Index
792 | Public Roadway Mileage



1 Major
Seaport | Port of Fernandina



58.02 | Class I Mainline Miles (CSX, NS)
- | Class II Mainline Miles
21.47 | Class III Mainline Miles (FCRD)



27 miles | Distance from closest
major airport (Jacksonville
International Airport)

FLORIDA HIGHLIGHTS

3rd most populous US State

\$1T Gross Domestic Product

4th Largest US Economy and **17th Largest** Economy in World

Nation's **3rd largest** workforce

1 in 5 U.S. exporters are located in Florida

\$153B International Trade

1.76M jobs supported by Trade, Transportation and Utilities industry sector

1.25M jobs supported by Leisure and Hospitality industry sector

131M annual visitors

CAPITAL **TALLAHASSEE**

AREA (SQ. MILES) **53,624**

LARGEST CITY (SIZE) **JACKSONVILLE**

POPULATION (2019) **21,208,589**

ANNUAL POP GROWTH RATE (2010-2019) **1.4%**

EMPLOYMENT (2019) **8,884,065**

ANNUAL EMP GROWTH RATE (2010-2019) **2.8%**

*Bureau of Economic Business Research,
Bureau of Labor Statistics*

DOMESTIC IMPORTS

1	GEORGIA	\$44B
2	CALIFORNIA	\$29B
3	TEXAS	\$26B
4	ALABAMA	\$18B
5	ILLINOIS	\$18B

DOMESTIC EXPORTS

1	GEORGIA	\$22B
2	TEXAS	\$19B
3	CALIFORNIA	\$15B
4	NORTH CAROLINA	\$12B
5	NEW YORK	\$10B

INTERNATIONAL IMPORTS

1	CHINA	\$9.5B
2	JAPAN	\$6.5B
3	BRAZIL	\$6.4B
4	MEXICO	\$4.5B
5	CHILE	\$3.7B

INTERNATIONAL EXPORTS

1	BRAZIL	\$13.4B
2	COLOMBIA	\$4.2B
3	ARGENTINA	\$3.6B
4	DOMINICAN REPUBLIC	\$3.1B
5	CHILE	\$3B

TRANSPORTATION STATISTICS AND FREIGHT MOVEMENT BY MODE



83%
TONNAGE

71%
VALUE

123,104 Public roadway mileage
12,130 State Highway System (SHS) mileage
30.7M Daily truck miles traveled on SHS
98 Public truck parking facilities



3.5%
TONNAGE

2.9%
VALUE

15 Deepwater seaports
4.1M Twenty-foot equivalent units (TEUs)
16.8M Annual cruise passengers



6.7%
TONNAGE

1.8%
VALUE

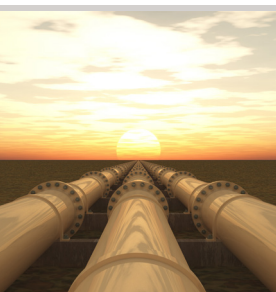
2,936 Miles of roads
6.9M Annual rail passenger traffic



0.1%
TONNAGE

5.4%
VALUE

129 Public use airports
20 Commercial service airports
2 Active spaceports



3.6%
TONNAGE

1%
VALUE

5,899 Miles of gas transmission and hazardous liquid pipelines



3.1%
TONNAGE

17.9%
VALUE

Includes shipments by multiple modes and by parcel delivery services, U.S. Postal Service, or couriers (capped at 150 pounds). This category is not limited to containerized or trailer-on-flatcar shipments.

FLORIDA COMMODITY FLOWS (2018-2045)



IMPORTS



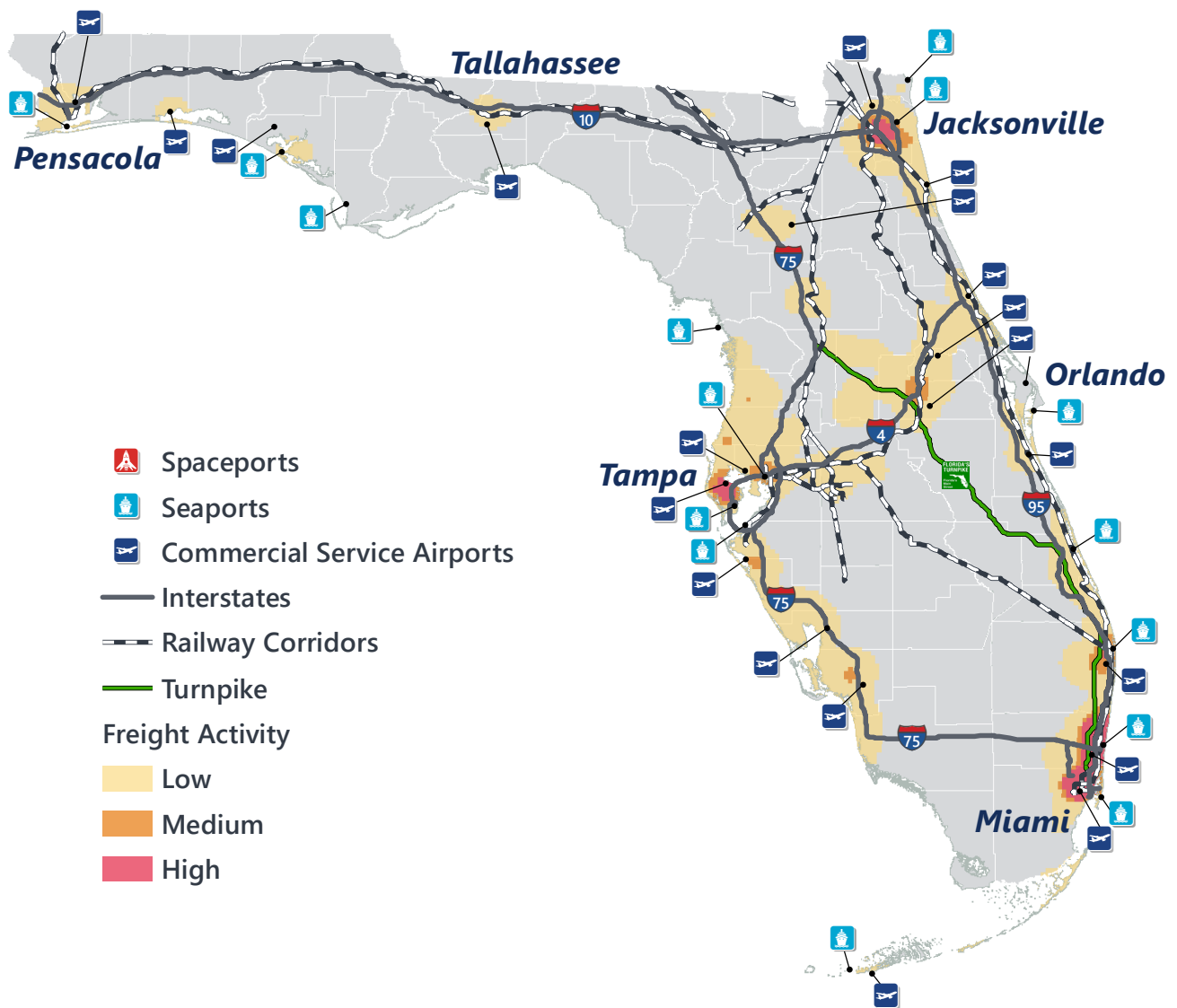
WITHIN FL



EXPORTS

	2018	2045	2018	2045	2018	2045
TONNAGE	142M	190M	656M	761M	57M	103M
VALUE	\$321B	\$690B	\$402B	\$844B	\$180B	\$606B

Freight Analysis Framework (FAF) 4.5.1.



Rickey Fitzgerald
Manager, Freight & Multimodal Operations
 Florida Department of Transportation
 605 Suwannee Street, Tallahassee, FL 32399
 Rickey.Fitzgerald@dot.state.fl.us
 850.414.4702