

FREIGHT AND LOGISTICS OVERVIEW

FEBRUARY 2021

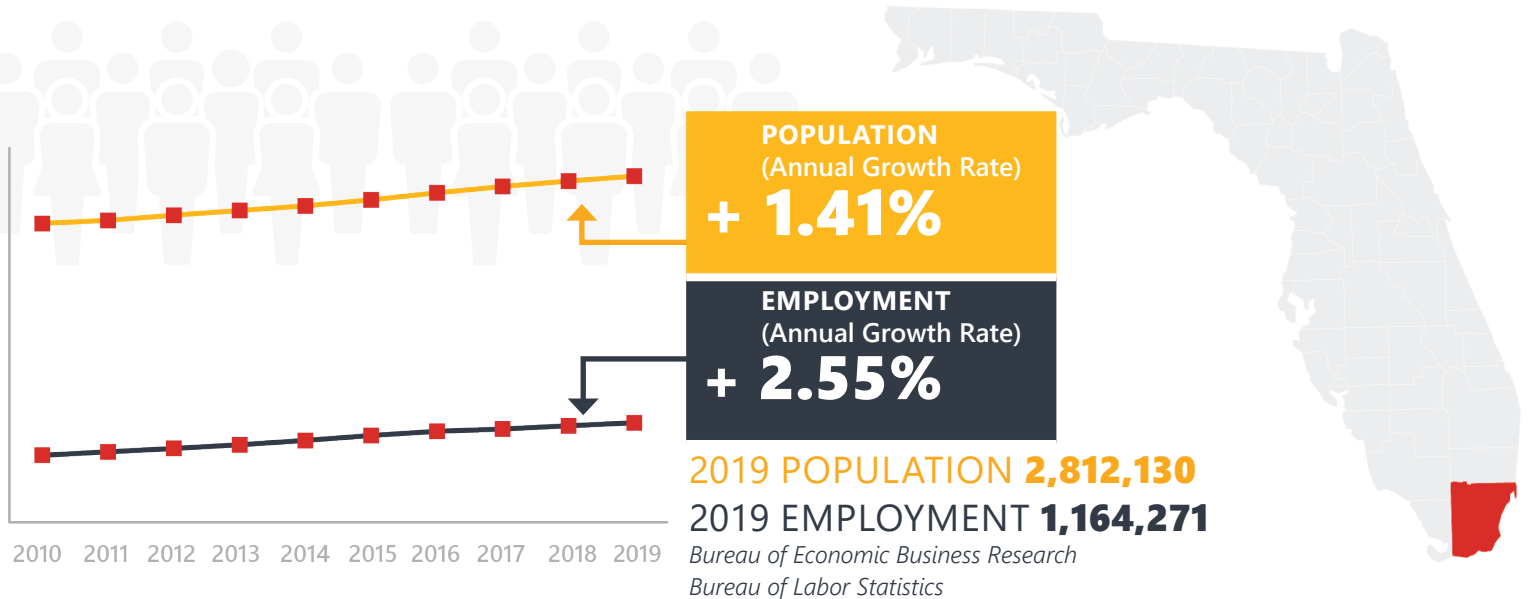
MIAMI-DADE COUNTY



Mission: The department will provide a safe transportation system that ensures the mobility of people and goods, enhances economic prosperity, and preserves the quality of our environment and communities.

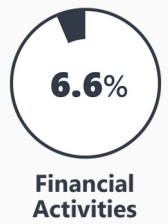
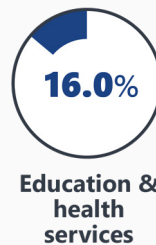
MIAMI-DADE COUNTY HIGHLIGHTS

"CRUISE CAPITAL OF THE WORLD"		AREA (SQ . MILES)	2,431
COUNTY SEAT	MIAMI	LARGEST CITY (SIZE)	MIAMI



LARGEST INDUSTRY SECTORS BY EMPLOYMENT (2019)

Office of Economic and Demographic Research



FASTEST GROWING INDUSTRIES (2010-2019)

TRADE, TRANSPORTATION, AND UTILITIES	JOBS ADDED	52,511
PROFESSIONAL AND BUSINESS SERVICES		42,833
LEISURE AND HOSPITALITY		38,505
EDUCATION AND HEALTH SERVICES		37,438
CONSTRUCTION		20,119

Bureau of Labor Statistics

DID YOU KNOW?

Miami International Airport is the third largest U.S. airport for international passengers and first for international freight.

Miami is the only city surrounded by two national parks: Biscayne National Park and Everglades National Park.

Miami serves nearly 5 million cruise passengers every year.

COMMODITY FLOW HIGHLIGHTS



IMPORTS

WITHIN COUNTY

EXPORTS

	2018	2045	2018	2045	2018	2045
Tonnage:	28.49 M	40.28 M	31.26 M	35.77 M	51.14 M	66.04 M
Value:	\$ 83.44 B	\$ 129.69 B	\$ 24.6 B	\$ 33.6 B	\$ 63.13 B	\$ 93.85 B



TOP COMMODITY by Tonnage, 2018

Nonmetallic Minerals	5,252,624
Warehouse, Distribution Center and Drayage Movements	4,712,717
Food or Kindred Products	3,268,730
Petroleum or Coal Products	2,268,928
Clay, Concrete, Glass, Stone	2,237,247



Nonmetallic Minerals	20,529,475
Warehouse, Distribution Center and Drayage Movements	13,119,424
Clay, Concrete, Glass, Stone	7,089,769
Petroleum or Coal Products	3,653,413
Waste or Scrap Materials	2,626,293



TOP COMMODITY by Value, 2018

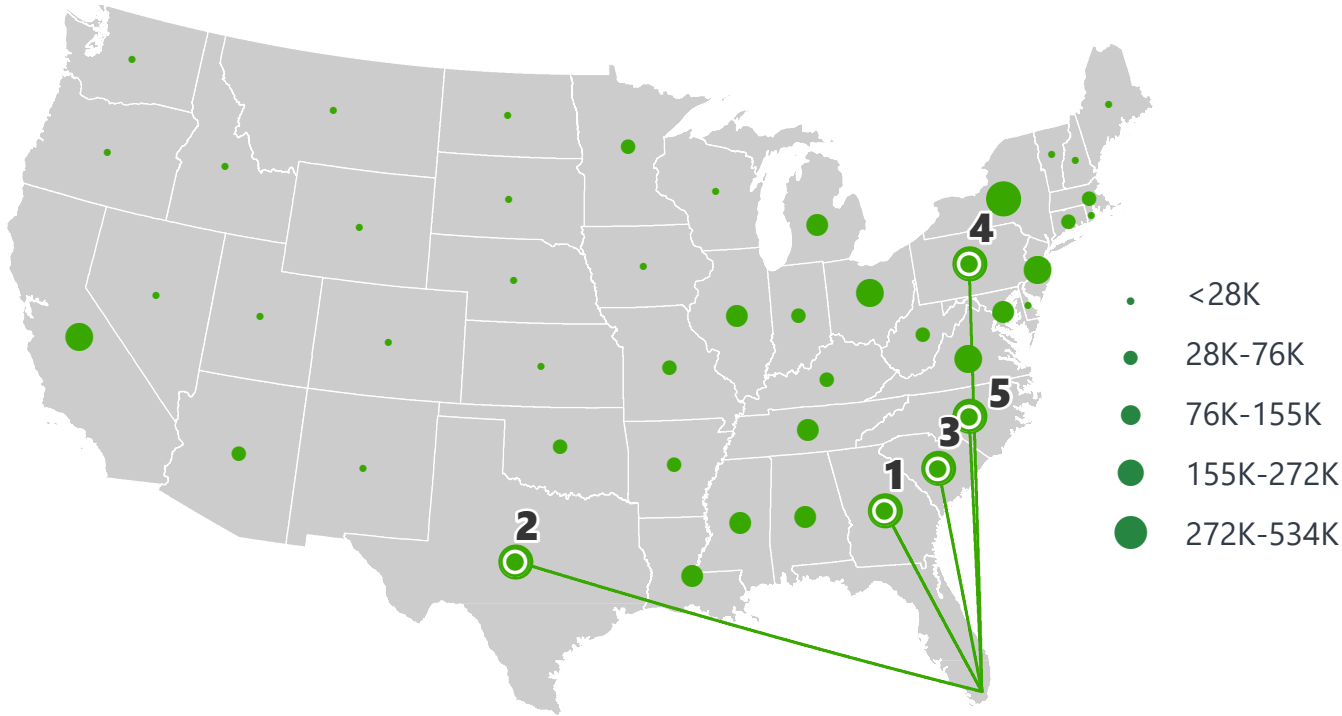
Warehouse, Distribution Center and Drayage Movements	\$ 11,667,742,654
Transportation Equipment	\$ 11,417,242,663
Electrical Equipment	\$ 11,034,561,398
Misc. Mixed Shipments	\$ 8,956,308,241
Misc. Manufacturing Products	\$ 6,582,160,673



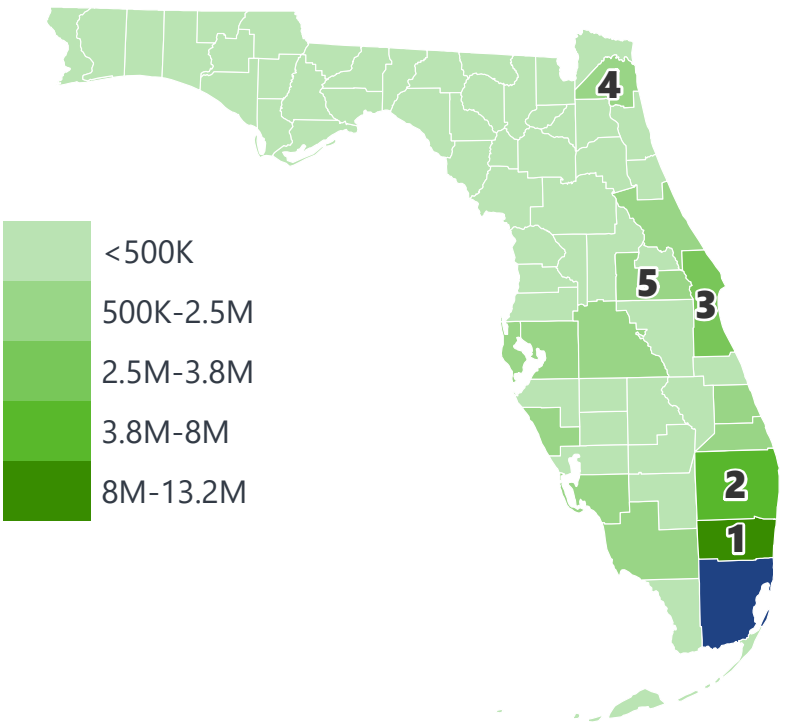
Warehouse, Distribution Center and Drayage Movements	\$ 22,617,443,303
Transportation Equipment	\$ 8,671,220,960
Electrical Equipment	\$ 4,557,090,718
Apparel or Related Products	\$ 3,213,652,514
Misc. Mixed Shipments	\$ 2,861,182,388

MIAMI-DADE COUNTY EXPORTS AND IMPORTS

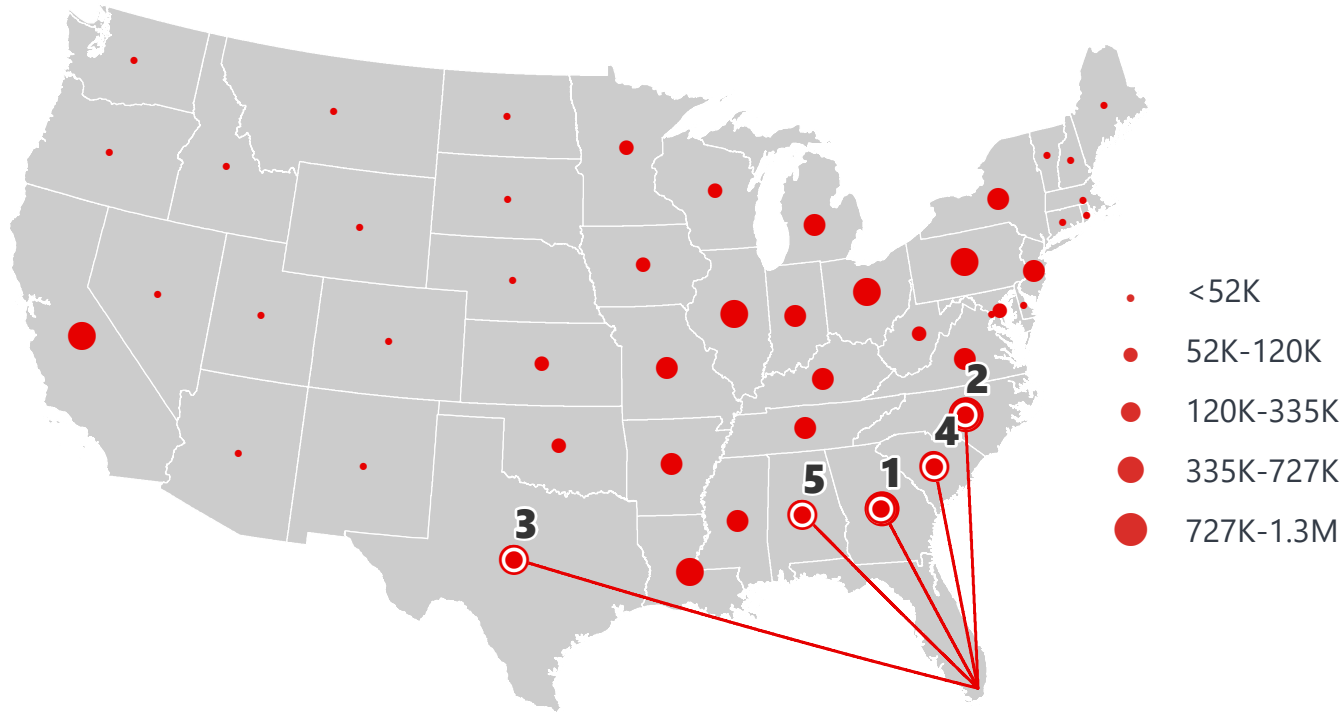
DOMESTIC EXPORTS (TONS)



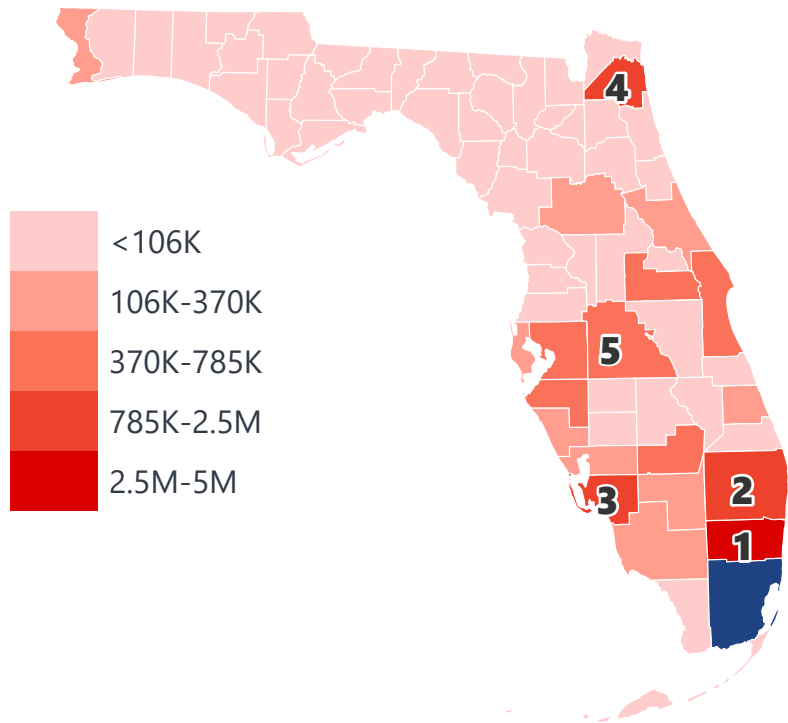
INTRASTATE EXPORTS (TONS)



DOMESTIC IMPORTS (TONS)



INTRASTATE IMPORTS (TONS)



DOMESTIC EXPORTS (TONNAGE)

1	Georgia	533,466
2	Texas	499,839
3	South Carolina	482,635
4	Pennsylvania	461,741
5	North Carolina	427,490

INTRASTATE EXPORTS (TONNAGE)

1	Broward	13,181,239
2	Palm Beach	7,971,994
3	Brevard	3,855,746
4	Duval	2,541,702
5	Orange	2,064,362

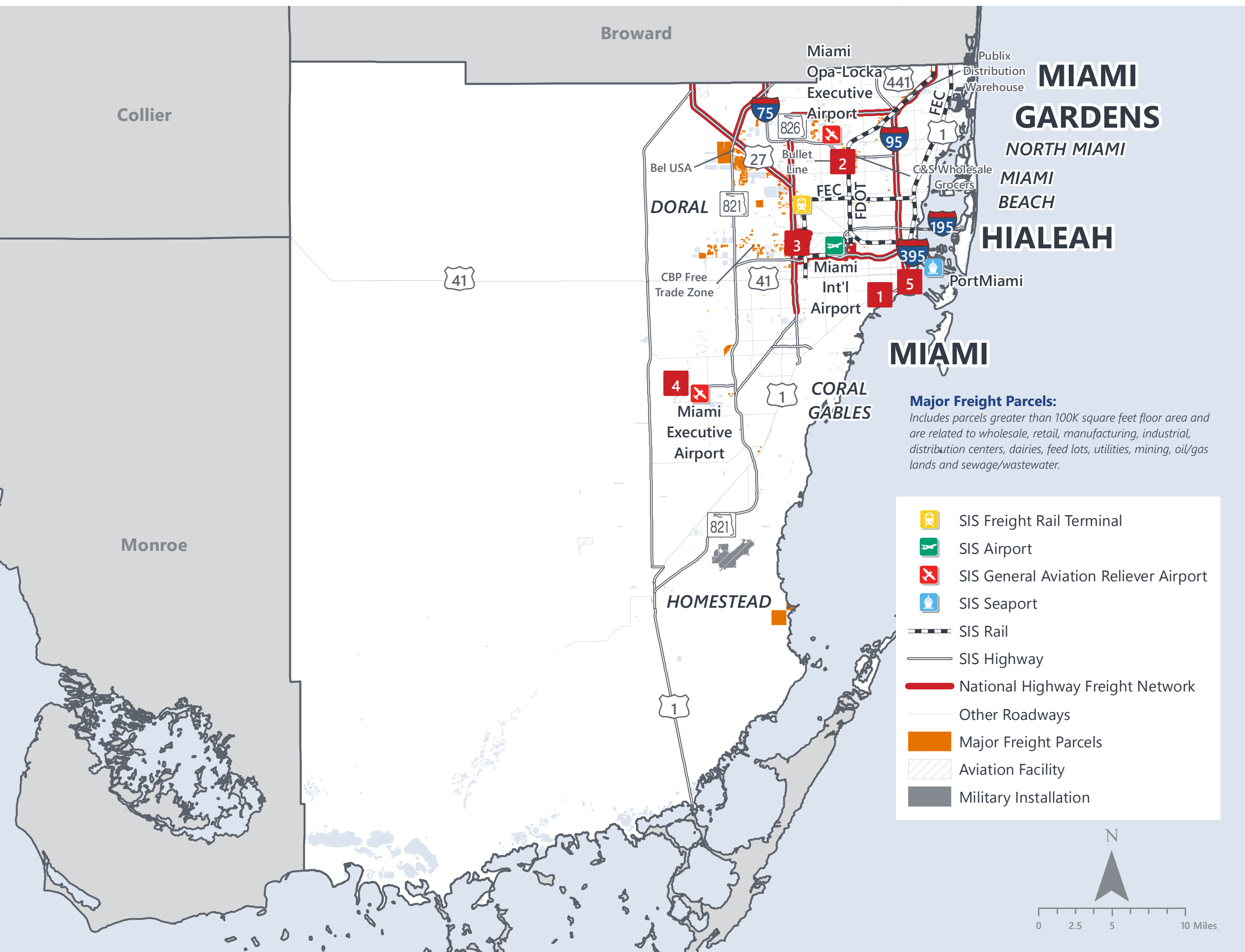
DOMESTIC IMPORTS (TONNAGE)

1	Georgia	1,300,100
2	North Carolina	972,761
3	Texas	727,271
4	South Carolina	669,183
5	Alabama	530,341

INTRASTATE IMPORTS (TONNAGE)

1	Broward	4,990,417
2	Palm Beach	2,467,941
3	Lee	2,037,489
4	Duval	1,856,242
5	Polk	785,034

MIAMI-DADE COUNTY FREIGHT INFRASTRUCTURE



LARGEST FREIGHT EMPLOYERS

1	KASA Delivery	1K-2K
2	UPS	1K-2K
3	USPS	1K-2K
4	Beckman Coulter	1K-2K
5	Eller-I.T.O	800-900

MAJOR FREIGHT LAND USES

217.5 M SQ.FT Floor Area

67.06%	Warehousing and distribution centers
20.02%	Light manufacturing
3.77%	Heavy industrial
2.25%	Utilities
1.70%	Other food processing

850.4 M SQ.FT LAND AREA

40.05%	Warehousing and distribution centers
20.40%	Utilities
20.29%	Minerals processing and construction material plants
10.67%	Light manufacturing
3.77%	Heavy industrial

MAJOR COUNTY COMMODITIES



IMPORTS



TOP COMMODITY by Tonnage, 2018 (relative to Florida)

FL Rank	Commodity	% Florida Share
1	Mail or Contract Traffic	46.33%
1	Small Packaged Freight Shipments	30.53%
2	Misc. Mixed Shipments	25.98%
1	Textile Mill Products	21.31%
1	Instruments, Photo and Optical Equipment	20.04%

EXPORTS



FL Rank	Commodity	% Florida Share
1	Tobacco Products	64.54%
1	Marine Products	52.94%
1	Mail or Contract Traffic	47.95%
1	Shipping Containers	39.35%
1	Apparel or Related Products	39.31%

TOP COMMODITY by Value, 2018 (relative to Florida)

FL Rank	Commodity	% Florida Share
1	Metallic Ores	62.98%
1	Mail or Contract Traffic	46.33%
1	Electrical Equipment	36.01%
1	Misc. Manufacturing Products	30.27%
1	Instruments, Photo and Optical Equipment	28.86%

FL Rank	Commodity	% Florida Share
1	Tobacco Products	63.22%
1	Marine Products	53.08%
1	Mail or Contract Traffic	47.94%
1	Apparel or Related Products	45.78%
1	Warehouse, Distribution Center and Drayage Movements	32.71%



TRANSPORTATION STATISTICS AND FREIGHT MOVEMENT BY MODE



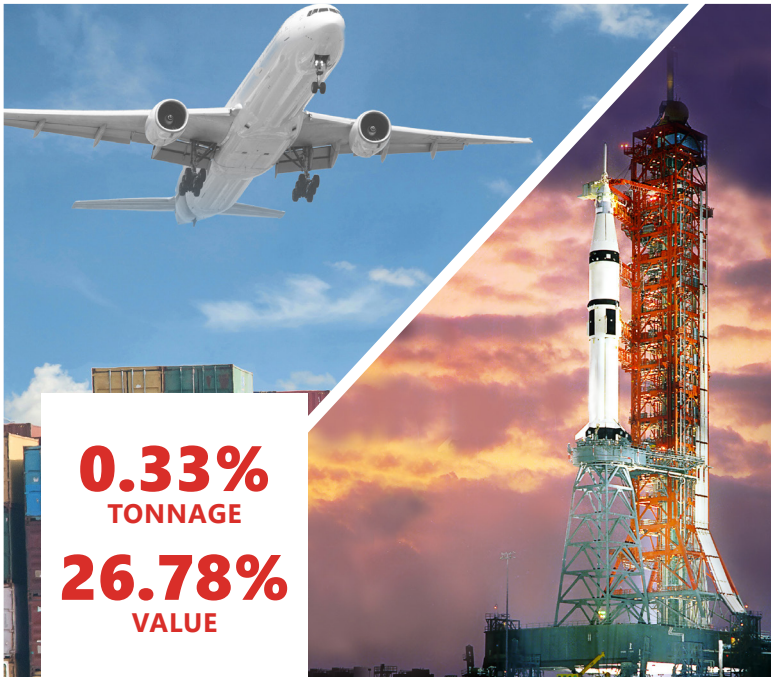
1.83 M | Daily Truck Miles Traveled
2.84 | Planning Time Index
7,265 | Public Roadway Mileage



1 Major Seaport | Port of Miami



49.08 | Class I Mainline Miles (CSX)
43.09 | Class II Mainline Miles (FEC)
- | Class III Mainline Miles



1 Major Airport | Miami International Airport

FLORIDA HIGHLIGHTS

3rd most populous US State

\$1T Gross Domestic Product

4th Largest US Economy and **17th Largest** Economy in World

Nation's **3rd largest** workforce

1 in 5 U.S. exporters are located in Florida

\$153B International Trade

1.76M jobs supported by Trade, Transportation and Utilities industry sector

1.25M jobs supported by Leisure and Hospitality industry sector

131M annual visitors

CAPITAL **TALLAHASSEE**

AREA
(SQ. MILES) **53,624**

LARGEST
CITY (SIZE) **JACKSONVILLE**

POPULATION
(2019) **21,208,589**

ANNUAL POP
GROWTH RATE
(2010-2019) **1.4%**

EMPLOYMENT
(2019) **8,884,065**

ANNUAL EMP
GROWTH RATE
(2010-2019) **2.8%**

*Bureau of Economic Business Research,
Bureau of Labor Statistics*

DOMESTIC IMPORTS

1	GEORGIA	\$44B
2	CALIFORNIA	\$29B
3	TEXAS	\$26B
4	ALABAMA	\$18B
5	ILLINOIS	\$18B

DOMESTIC EXPORTS

1	GEORGIA	\$22B
2	TEXAS	\$19B
3	CALIFORNIA	\$15B
4	NORTH CAROLINA	\$12B
5	NEW YORK	\$10B

INTERNATIONAL IMPORTS

1	CHINA	\$9.5B
2	JAPAN	\$6.5B
3	BRAZIL	\$6.4B
4	MEXICO	\$4.5B
5	CHILE	\$3.7B

INTERNATIONAL EXPORTS

1	BRAZIL	\$13.4B
2	COLOMBIA	\$4.2B
3	ARGENTINA	\$3.6B
4	DOMINICAN REPUBLIC	\$3.1B
5	CHILE	\$3B

TRANSPORTATION STATISTICS AND FREIGHT MOVEMENT BY MODE



83%
TONNAGE

71%
VALUE

123,104 Public roadway mileage
12,130 State Highway System (SHS) mileage
30.7M Daily truck miles traveled on SHS
98 Public truck parking facilities



3.5%
TONNAGE

2.9%
VALUE

15 Deepwater seaports
4.1M Twenty-foot equivalent units (TEUs)
16.8M Annual cruise passengers



6.7%
TONNAGE

1.8%
VALUE

2,936 Miles of roads
6.9M Annual rail passenger traffic



0.1%
TONNAGE

5.4%
VALUE

129 Public use airports
20 Commercial service airports
2 Active spaceports



3.6%
TONNAGE

1%
VALUE

5,899 Miles of gas transmission and hazardous liquid pipelines



3.1%
TONNAGE

17.9%
VALUE

Includes shipments by multiple modes and by parcel delivery services, U.S. Postal Service, or couriers (capped at 150 pounds). This category is not limited to containerized or trailer-on-flatcar shipments.

FLORIDA COMMODITY FLOWS (2018-2045)



IMPORTS



WITHIN FL



EXPORTS

	2018	2045	2018	2045	2018	2045
TONNAGE	142M	190M	656M	761M	57M	103M
VALUE	\$321B	\$690B	\$402B	\$844B	\$180B	\$606B

Freight Analysis Framework (FAF) 4.5.1.



Rickey Fitzgerald
 Manager, Freight & Multimodal Operations
 Florida Department of Transportation
 605 Suwannee Street, Tallahassee, FL 32399
 Rickey.Fitzgerald@dot.state.fl.us
 850.414.4702