

FREIGHT AND LOGISTICS OVERVIEW

FEBRUARY 2021

MARTIN COUNTY



Mission: The department will provide a safe transportation system that ensures the mobility of people and goods, enhances economic prosperity, and preserves the quality of our environment and communities.

MARTIN COUNTY HIGHLIGHTS

"SAILFISH CAPITAL OF THE WORLD"

AREA (SQ. MILES)

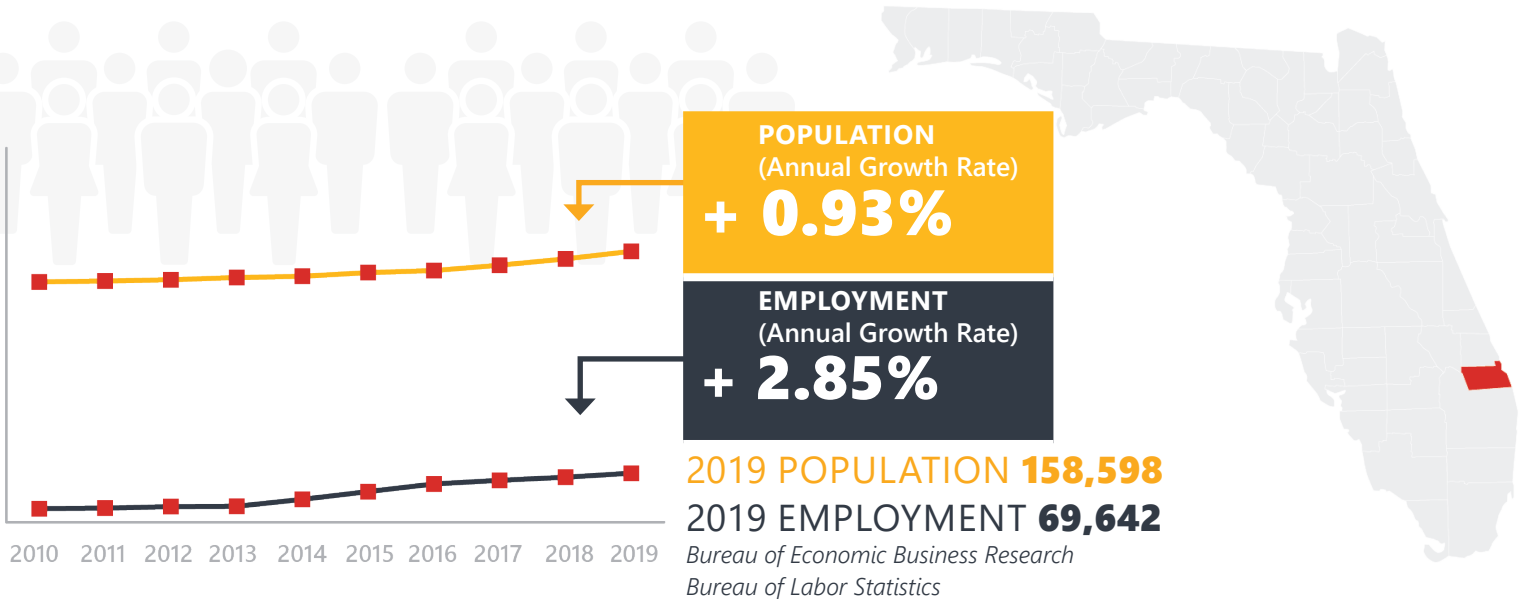
753

COUNTY SEAT

STUART

LARGEST CITY (SIZE)

STUART

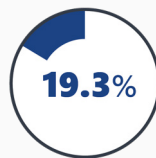


LARGEST INDUSTRY SECTORS BY EMPLOYMENT (2019)

Office of Economic and Demographic Research



Education & health services



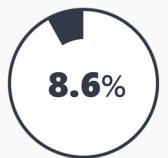
Trade, transportation & utilities



Leisure & hospitality



Professional & business services



Construction

FASTEST GROWING INDUSTRIES (2010-2019)

EDUCATION AND HEALTH SERVICES	JOBS ADDED	4,307
PROFESSIONAL AND BUSINESS SERVICES		3,122
LEISURE AND HOSPITALITY		2,816
CONSTRUCTION		1,815
TRADE, TRANSPORTATION, AND UTILITIES		720

Bureau of Labor Statistics

DID YOU KNOW?

Stuart is located on the eastern point of the Okeechobee Waterway, a 54 mile long waterway and Florida's only cross-state canal, which extends from the Atlantic Ocean in Stuart to the Gulf of Mexico in Ft. Myers.

Stuart was named one of the "Happiest Seaside Towns in America", #3 "Best Small Town to visit", and landed the #9 spot on the "50 Most Beautiful Small Towns in America" list.

Martin County is home to more than 77 parks and over 100,000 acres of parks and conservation land.

COMMODITY FLOW HIGHLIGHTS



IMPORTS

WITHIN COUNTY

EXPORTS

	2018	2045	2018	2045	2018	2045
Tonnage:	3.52 M	4.96 M	58.39 K	104.21 K	1.67 M	2.64 M
Value:	\$ 2.2 B	\$ 3.40 B	\$ 112.22 M	\$ 174.30 M	\$ 0.61 B	\$ 0.99 B



TOP COMMODITY *by Tonnage, 2018*



Nonmetallic Minerals	1,061,533
Clay, Concrete, Glass, Stone	593,378
Petroleum or Coal Products	488,738
Warehouse, Distribution Center and Drayage Movements	427,720
Farm Products	343,576

Clay, Concrete, Glass, Stone	646,312
Farm Products	574,614
Waste or Scrap Materials	263,010
Food or Kindred Products	100,172
Chemicals or Allied Products	26,684



TOP COMMODITY *by Value, 2018*

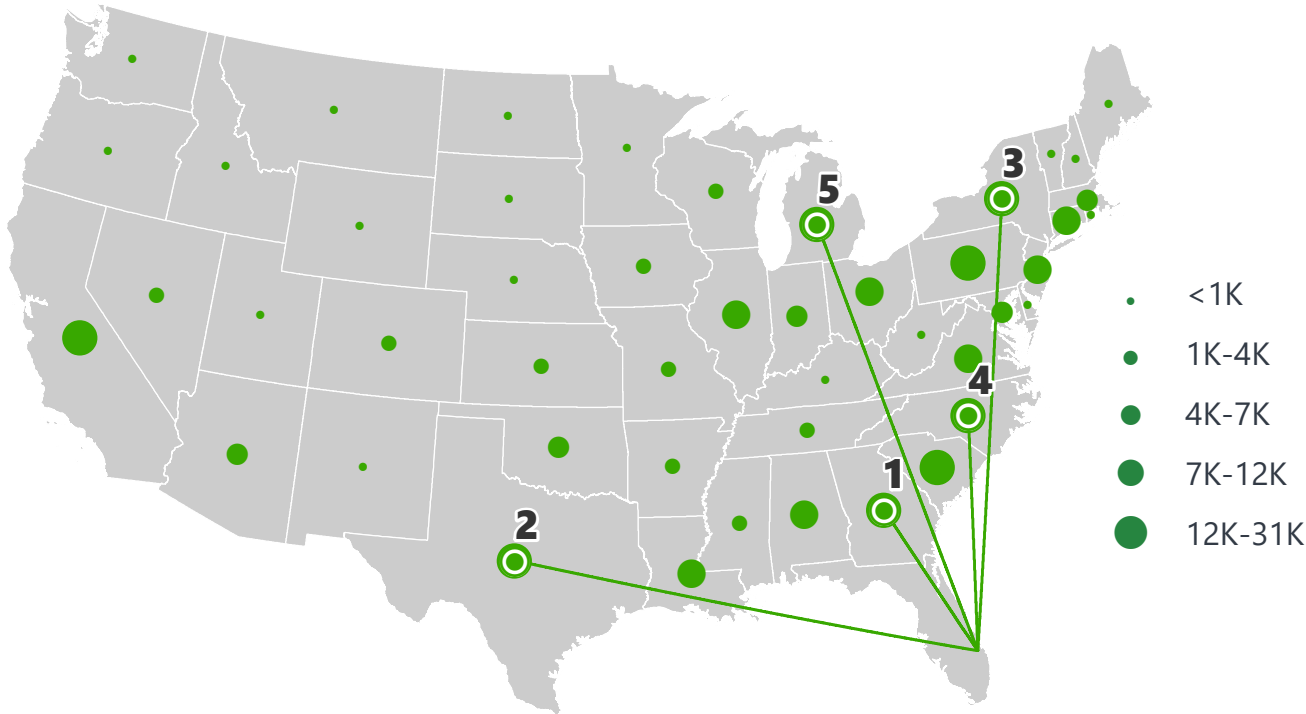


Warehouse, Distribution Center and Drayage Movements	\$ 529,194,260
Transportation Equipment	\$ 351,794,721
Petroleum or Coal Products	\$ 258,715,841
Food or Kindred Products	\$ 247,167,100
Chemicals or Allied Products	\$ 115,385,681

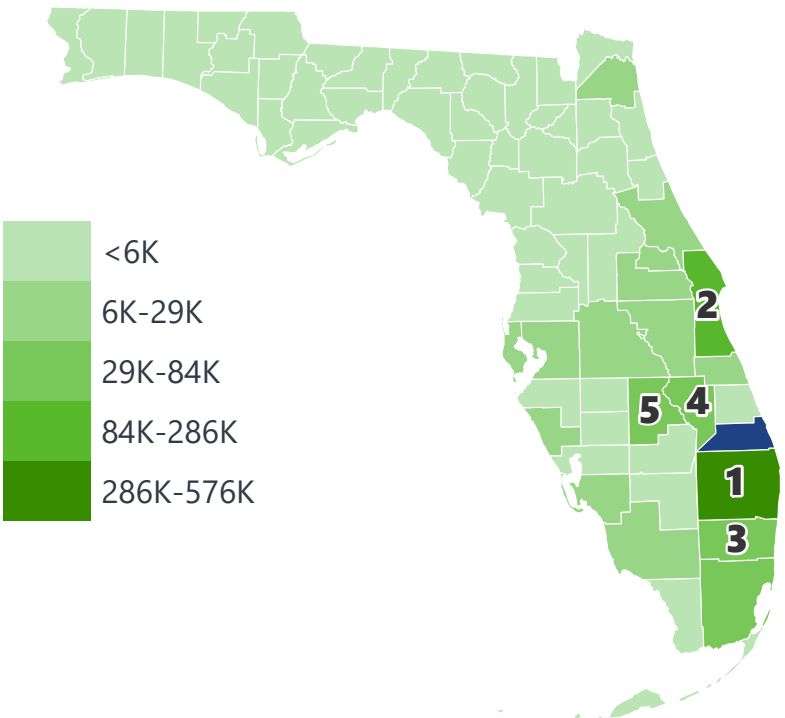
Transportation Equipment	\$ 220,209,425
Clay, Concrete, Glass, Stone	\$ 84,568,761
Food or Kindred Products	\$ 66,425,965
Waste or Scrap Materials	\$ 65,560,842
Farm Products	\$ 56,112,153

MARTIN COUNTY EXPORTS AND IMPORTS

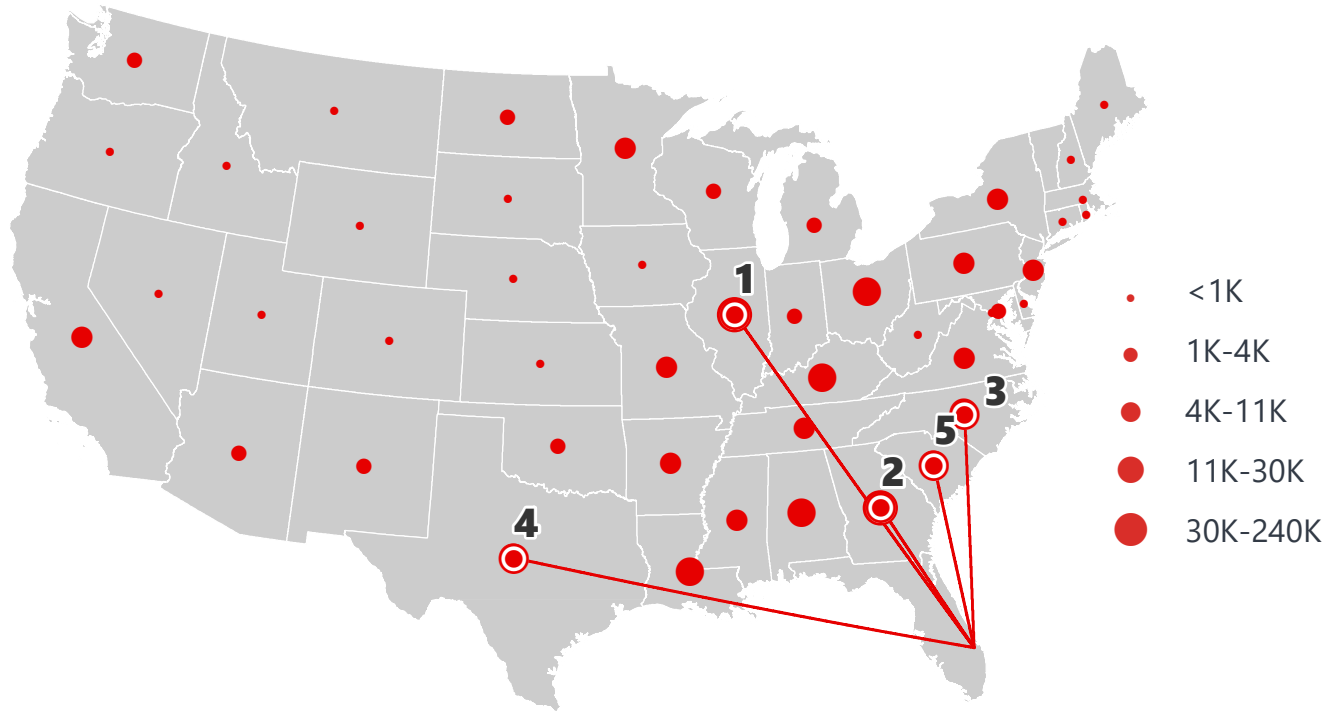
DOMESTIC EXPORTS (TONS)



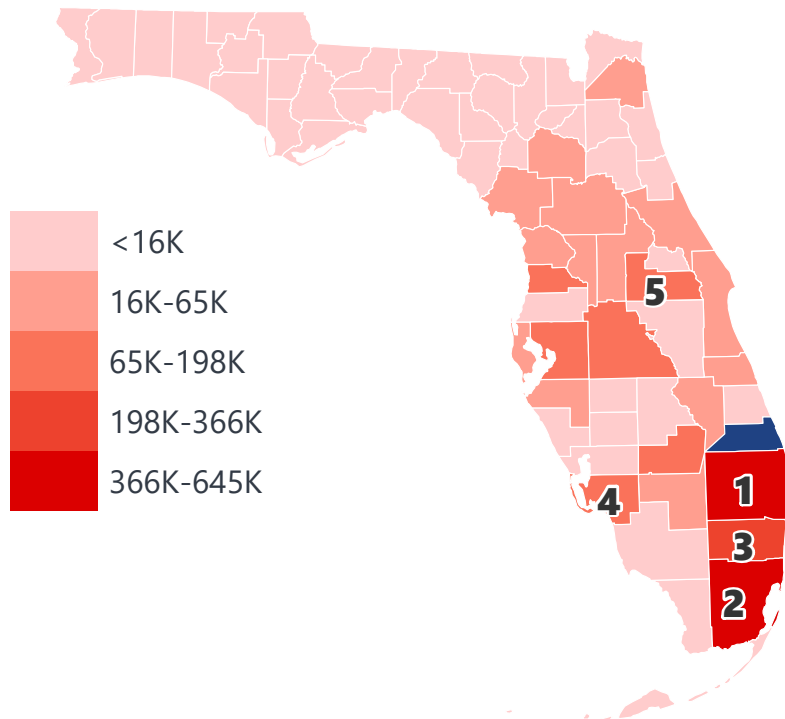
INTRASTATE EXPORTS (TONS)



DOMESTIC IMPORTS (TONS)



INTRASTATE IMPORTS (TONS)



DOMESTIC EXPORTS (TONNAGE)

1	Georgia	30,203
2	Texas	30,155
3	New York	29,479
4	North Carolina	23,479
5	Michigan	22,288

INTRASTATE EXPORTS (TONNAGE)

1	Palm Beach	575,585
2	Brevard	285,653
3	Broward	84,069
4	Okeechobee	53,300
5	Highlands	45,316

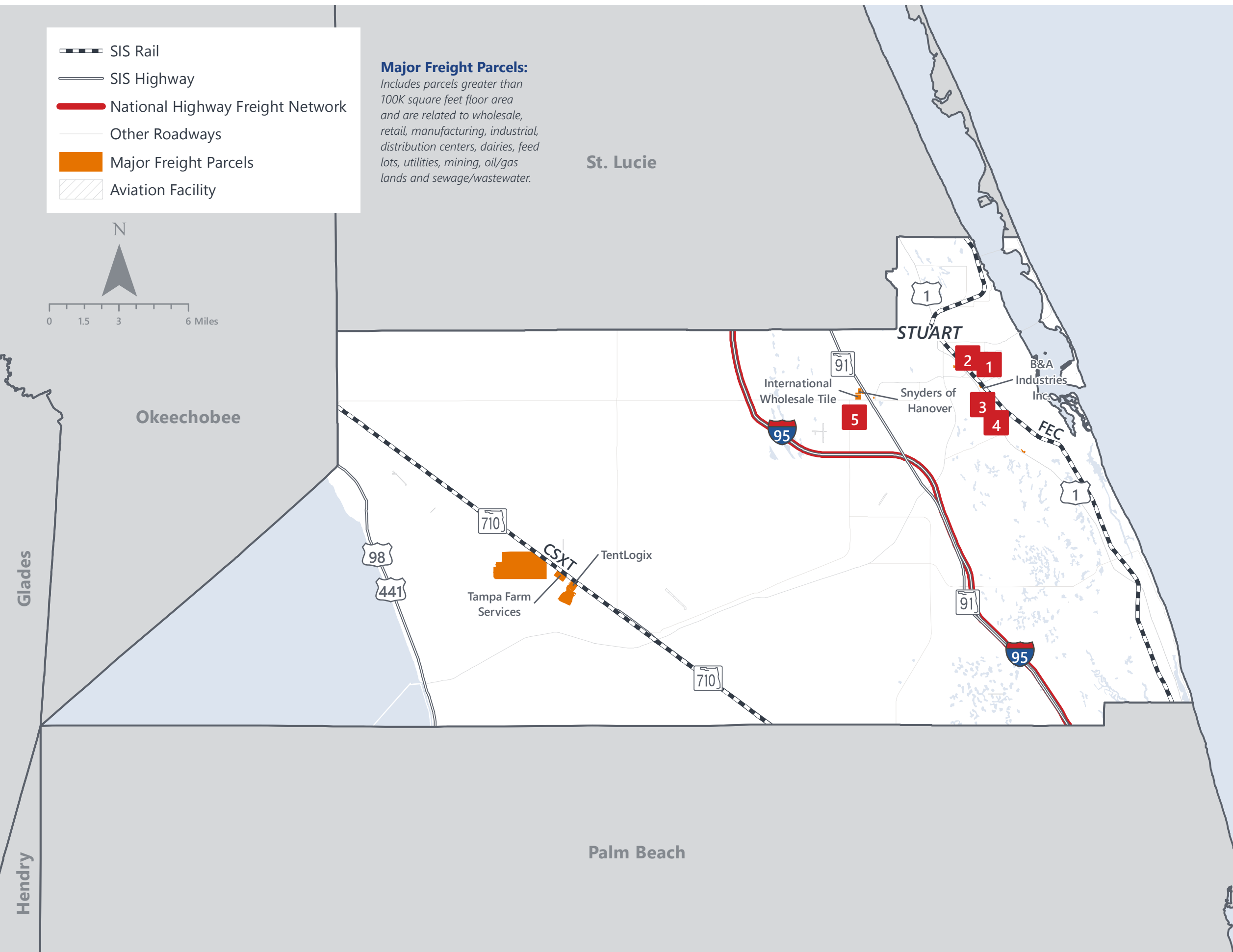
DOMESTIC IMPORTS (TONNAGE)

1	Illinois	239,215
2	Georgia	148,120
3	North Carolina	29,484
4	Texas	24,387
5	South Carolina	21,370

INTRASTATE IMPORTS (TONNAGE)

1	Palm Beach	645,253
2	Miami-Dade	590,327
3	Broward	366,298
4	Lee	198,001
5	Orange	106,162

MARTIN COUNTY FREIGHT INFRASTRUCTURE



LARGEST FREIGHT EMPLOYERS

1	Triumph Aerostructures	300-400
2	Liberator Medical	300-400
3	TurboCombustor	300-400
4	NUCO2 Inc.	100-200
5	Armellini Logistics	200-300

MAJOR FREIGHT LAND USES

10.6 M SQ.FT Floor Area

66.96%	Warehousing and distribution centers
16.50%	Light manufacturing
8.12%	Airports, bus terminals and marine terminals
4.27%	Utilities
2.05%	Lumber yards, sawmills, planing mills

672 M SQ.FT LAND AREA

78.29%	Utilities
17.91%	Warehousing and distribution centers
1.59%	Light manufacturing
1.07%	Airports, bus terminals and marine terminals
0.47%	Open storage

Florida Department of Economic Opportunity, 2018
Florida Department of Revenue, 2019

MAJOR COUNTY COMMODITIES



IMPORTS



TOP COMMODITY by Tonnage, 2018 (relative to Florida)

FL Rank	Commodity	% Florida Share
8	Farm Products	2.30%
19	Clay, Concrete, Glass, Stone	1.43%
18	Waste or Scrap Materials	1.37%
24	Warehouse, Distribution Center and Drayage Movements	1.01%
25	Nonmetallic Minerals	0.88%

EXPORTS



FL Rank	Commodity	% Florida Share
6	Farm Products	4.13%
22	Clay, Concrete, Glass, Stone	1.31%
13	Printed Matter	1.28%
24	Waste or Scrap Materials	0.99%
21	Food or Kindred Products	0.65%

TOP COMMODITY by Value, 2018 (relative to Florida)

FL Rank	Commodity	% Florida Share
17	Waste or Scrap Materials	1.36%
20	Farm Products	1.13%
22	Clay, Concrete, Glass, Stone	1.08%
14	Apparel or Related Products	1.02%
27	Marine Products	0.85%

FL Rank	Commodity	% Florida Share
26	Clay, Concrete, Glass, Stone	1.11%
25	Waste or Scrap Materials	0.98%
15	Printed Matter	0.94%
28	Farm Products	0.63%
12	Transportation Equipment	0.51%



TRANSPORTATION STATISTICS AND FREIGHT MOVEMENT BY MODE



471 K | Daily Truck Miles Traveled
1.19 | Planning Time Index
742 | Public Roadway Mileage



40 Miles | Distance from closest seaport
(Port of Palm Beach)



22.95 | Class I Mainline Miles (CSX)
45.29 | Class II Mainline Miles (FEC)
0.15 | Class III Mainline Miles (SCXF)



43 Miles | Distance from closest airport
(Palm Beach International Airport)

FLORIDA HIGHLIGHTS

3rd most populous US State

\$1T Gross Domestic Product

4th Largest US Economy and **17th Largest** Economy in World

Nation's **3rd largest** workforce

1 in 5 U.S. exporters are located in Florida

\$153B International Trade

1.76M jobs supported by Trade, Transportation and Utilities industry sector

1.25M jobs supported by Leisure and Hospitality industry sector

131M annual visitors

CAPITAL **TALLAHASSEE**

AREA (SQ. MILES) **53,624**

LARGEST CITY (SIZE) **JACKSONVILLE**

POPULATION (2019) **21,208,589**

ANNUAL POP GROWTH RATE (2010-2019) **1.4%**

EMPLOYMENT (2019) **8,884,065**

ANNUAL EMP GROWTH RATE (2010-2019) **2.8%**

*Bureau of Economic Business Research,
Bureau of Labor Statistics*

DOMESTIC IMPORTS

1	GEORGIA	\$44B
2	CALIFORNIA	\$29B
3	TEXAS	\$26B
4	ALABAMA	\$18B
5	ILLINOIS	\$18B

DOMESTIC EXPORTS

1	GEORGIA	\$22B
2	TEXAS	\$19B
3	CALIFORNIA	\$15B
4	NORTH CAROLINA	\$12B
5	NEW YORK	\$10B

INTERNATIONAL IMPORTS

1	CHINA	\$9.5B
2	JAPAN	\$6.5B
3	BRAZIL	\$6.4B
4	MEXICO	\$4.5B
5	CHILE	\$3.7B

INTERNATIONAL EXPORTS

1	BRAZIL	\$13.4B
2	COLOMBIA	\$4.2B
3	ARGENTINA	\$3.6B
4	DOMINICAN REPUBLIC	\$3.1B
5	CHILE	\$3B

TRANSPORTATION STATISTICS AND FREIGHT MOVEMENT BY MODE



83%
TONNAGE

71%
VALUE

123,104 Public roadway mileage
12,130 State Highway System (SHS) mileage
30.7M Daily truck miles traveled on SHS
98 Public truck parking facilities



3.5%
TONNAGE

2.9%
VALUE

15 Deepwater seaports
4.1M Twenty-foot equivalent units (TEUs)
16.8M Annual cruise passengers



6.7%
TONNAGE

1.8%
VALUE

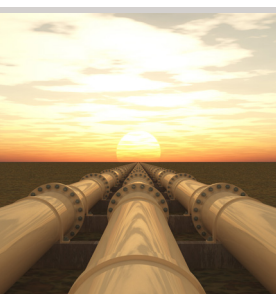
2,936 Miles of roads
6.9M Annual rail passenger traffic



0.1%
TONNAGE

5.4%
VALUE

129 Public use airports
20 Commercial service airports
2 Active spaceports



3.6%
TONNAGE

1%
VALUE

5,899 Miles of gas transmission and hazardous liquid pipelines



3.1%
TONNAGE

17.9%
VALUE

Includes shipments by multiple modes and by parcel delivery services, U.S. Postal Service, or couriers (capped at 150 pounds). This category is not limited to containerized or trailer-on-flatcar shipments.

FLORIDA COMMODITY FLOWS (2018-2045)



IMPORTS



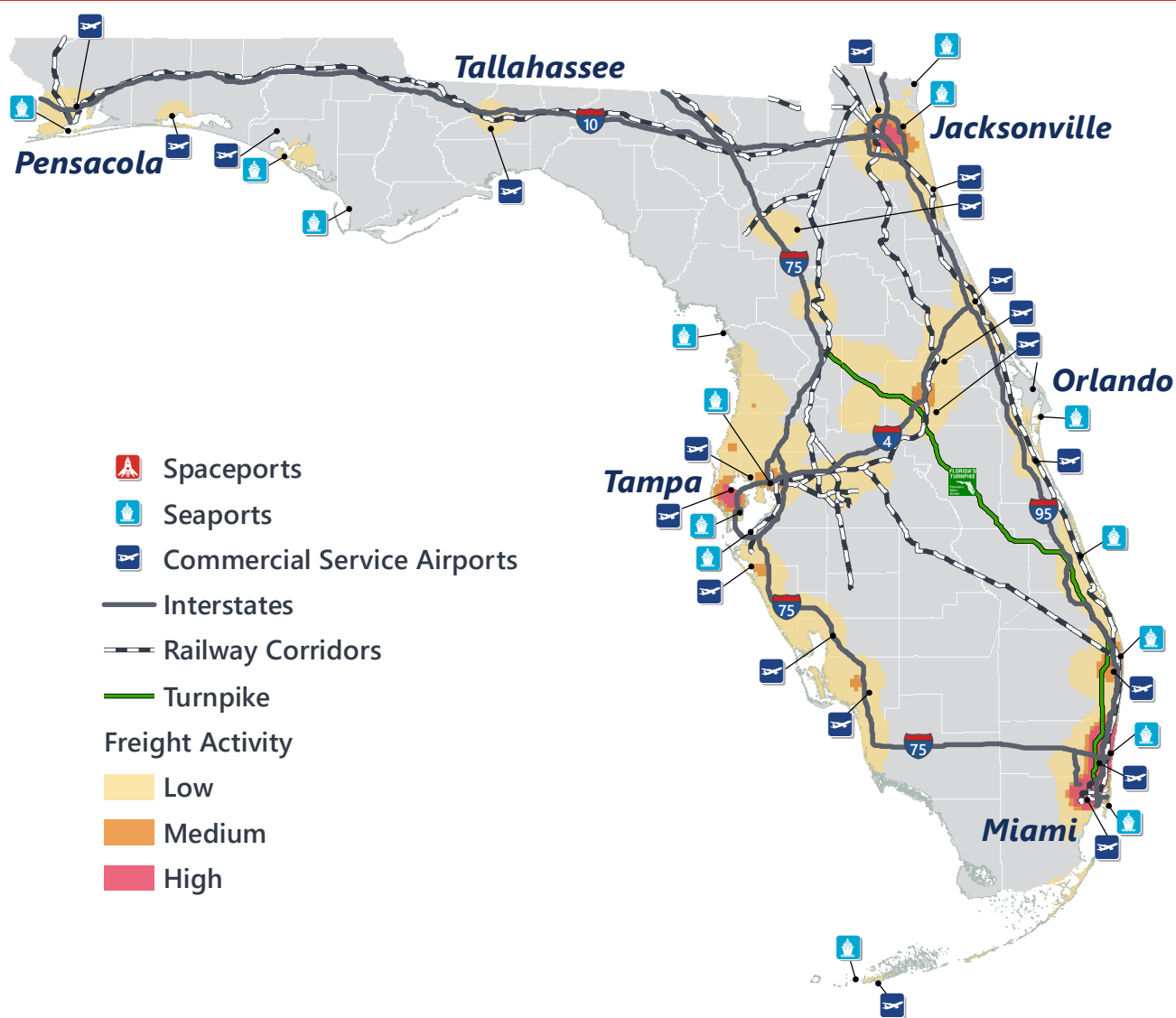
WITHIN FL



EXPORTS

	2018	2045	2018	2045	2018	2045
TONNAGE	142M	190M	656M	761M	57M	103M
VALUE	\$321B	\$690B	\$402B	\$844B	\$180B	\$606B

Freight Analysis Framework (FAF) 4.5.1.



Rickey Fitzgerald
 Manager, Freight & Multimodal Operations
 Florida Department of Transportation
 605 Suwannee Street, Tallahassee, FL 32399
 Rickey.Fitzgerald@dot.state.fl.us
 850.414.4702