

FREIGHT AND LOGISTICS OVERVIEW

FEBRUARY 2021

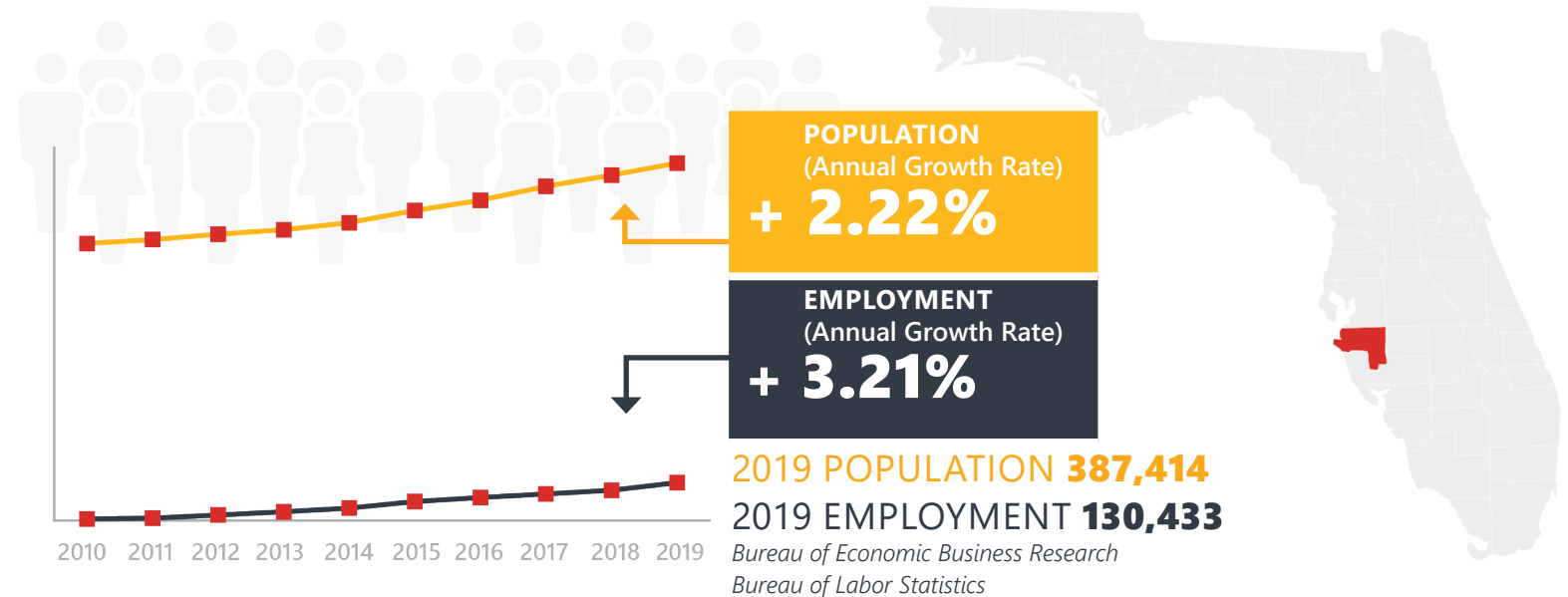
MANATEE COUNTY



Mission: The department will provide a safe transportation system that ensures the mobility of people and goods, enhances economic prosperity, and preserves the quality of our environment and communities.

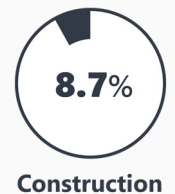
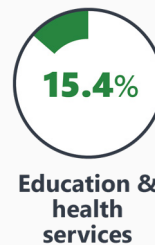
MANATEE COUNTY HIGHLIGHTS

"THE FRIENDLY CITY"		AREA (SQ . MILES)	893
COUNTY SEAT	BRADENTON	LARGEST CITY (SIZE)	BRADENTON



LARGEST INDUSTRY SECTORS BY EMPLOYMENT (2019)

Office of Economic and Demographic Research



FASTEST GROWING INDUSTRIES (2010-2019)

TRADE, TRANSPORTATION, AND UTILITIES	JOBS ADDED	9,711
LEISURE AND HOSPITALITY		7,018
CONSTRUCTION		5,462
EDUCATION AND HEALTH SERVICES		5,189
OTHER SERVICES		1,296

Bureau of Labor Statistics

DID YOU KNOW?

Manatee County's top industries are tourism and agriculture.

Bealls Department Store is headquartered in Manatee County and Tropicana is one of the top employers.

Port Manatee is the closest U.S. deepwater seaport to the Panama Canal, serving bulk, breakbulk, container, heavy lift, project and general cargo customers.

COMMODITY FLOW HIGHLIGHTS



IMPORTS

WITHIN COUNTY

EXPORTS

	2018	2045	2018	2045	2018	2045
Tonnage:	7.89 M	11.4 M	0.59 M	0.95 M	6.99 M	10.89 M
Value:	\$ 5.83 B	\$ 8.15 B	\$ 0.33 B	\$ 0.51 B	\$ 4.27 B	\$ 6.33 B



TOP COMMODITY by Tonnage, 2018

Nonmetallic Minerals	2,511,067
Petroleum or Coal Products	1,887,474
Clay, Concrete, Glass, Stone	970,023
Warehouse, Distribution Center and Drayage Movements	702,176
Food or Kindred Products	578,216



Nonmetallic Minerals	2,222,405
Food or Kindred Products	925,710
Farm Products	843,527
Waste or Scrap Materials	811,609
Clay, Concrete, Glass, Stone	636,987



TOP COMMODITY by Value, 2018

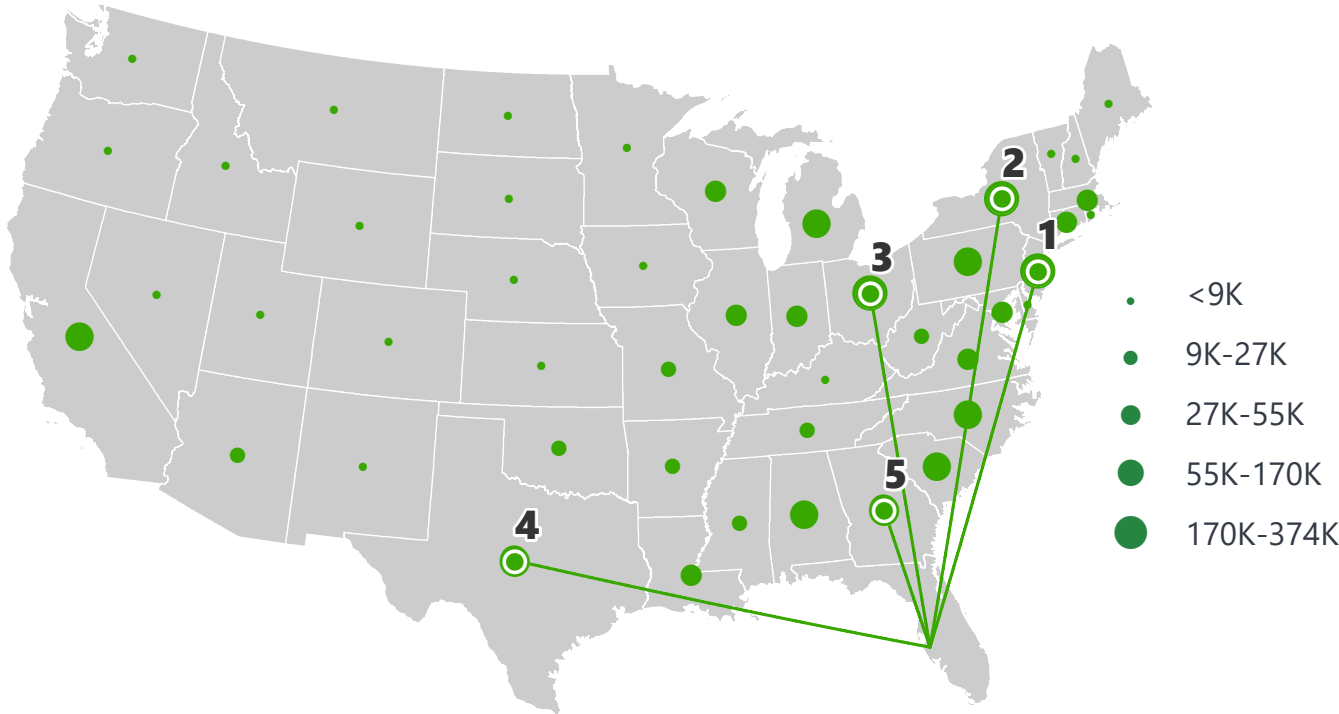
Petroleum or Coal Products	\$ 1,168,216,699
Warehouse, Distribution Center and Drayage Movements	\$ 1,022,486,311
Food or Kindred Products	\$ 729,969,576
Transportation Equipment	\$ 657,651,093
Chemicals or Allied Products	\$ 388,003,863



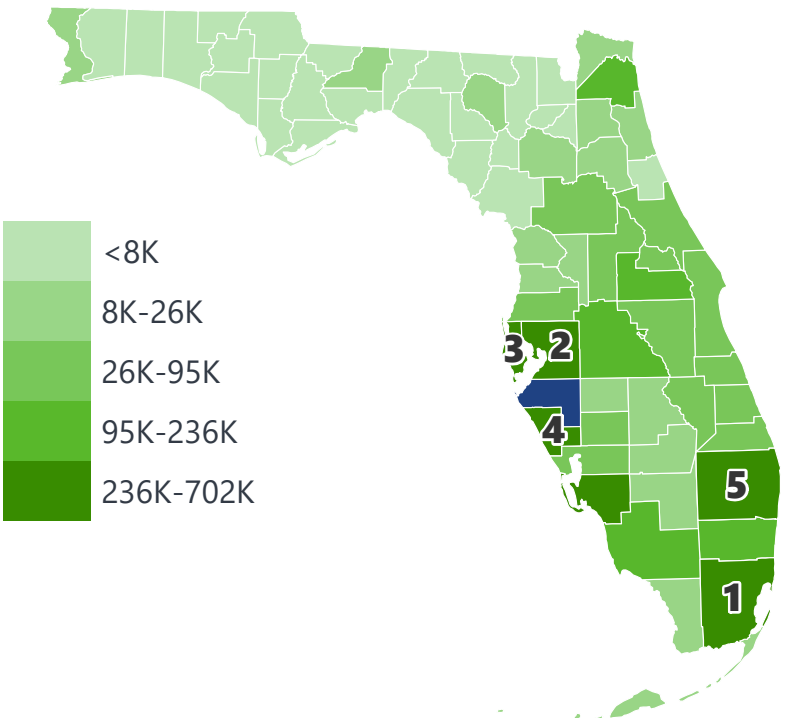
Food or Kindred Products	\$ 905,453,641
Farm Products	\$ 826,399,296
Warehouse, Distribution Center and Drayage Movements	\$ 517,310,625
Transportation Equipment	\$ 322,127,962
Petroleum or Coal Products	\$ 308,686,348

MANATEE COUNTY EXPORTS AND IMPORTS

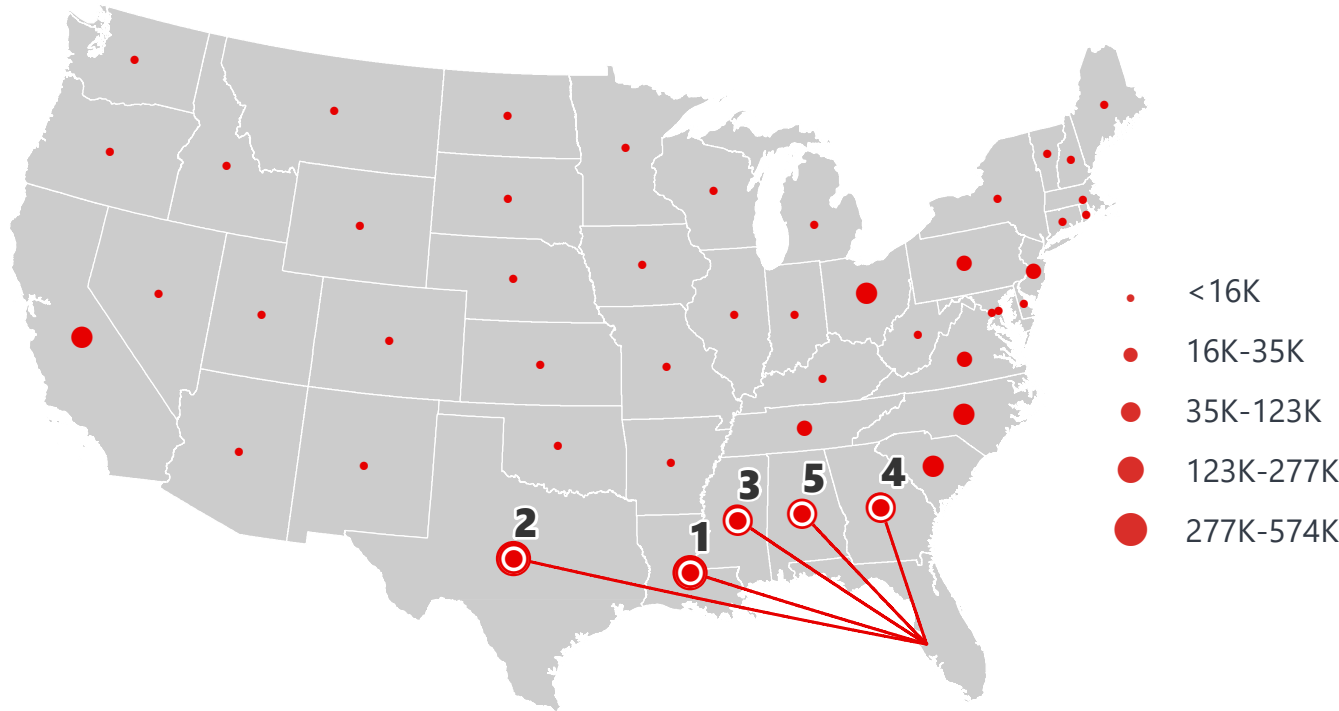
DOMESTIC EXPORTS (TONS)



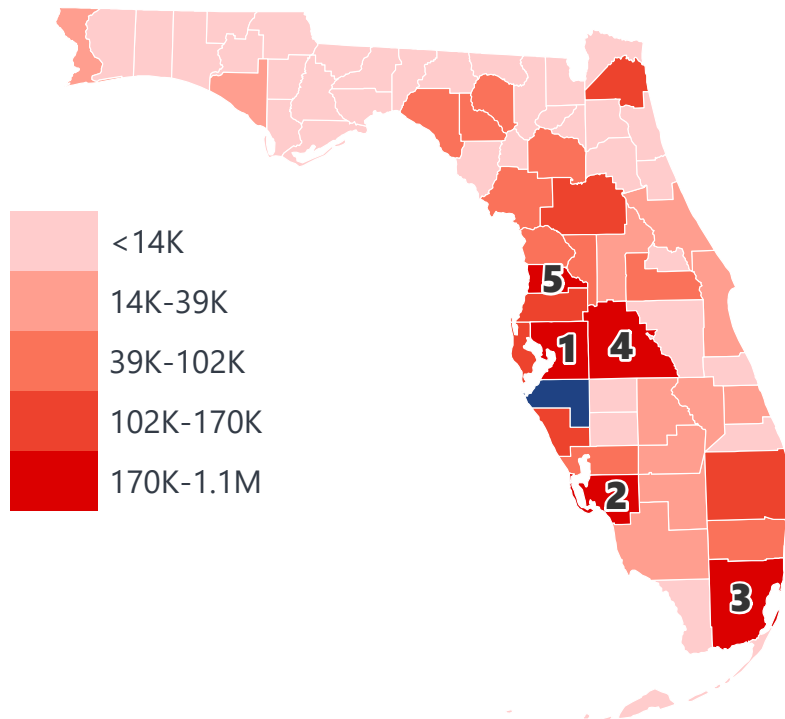
INTRASTATE EXPORTS (TONS)



DOMESTIC IMPORTS (TONS)



INTRASTATE IMPORTS (TONS)



DOMESTIC EXPORTS (TONNAGE)

1	New Jersey	373,032
2	New York	218,477
3	Ohio	210,964
4	Texas	169,039
5	Georgia	156,693

INTRASTATE EXPORTS (TONNAGE)

1	Miami-Dade	701,299
2	Hillsborough	478,226
3	Pinellas	410,955
4	Sarasota	386,430
5	Palm Beach	376,565

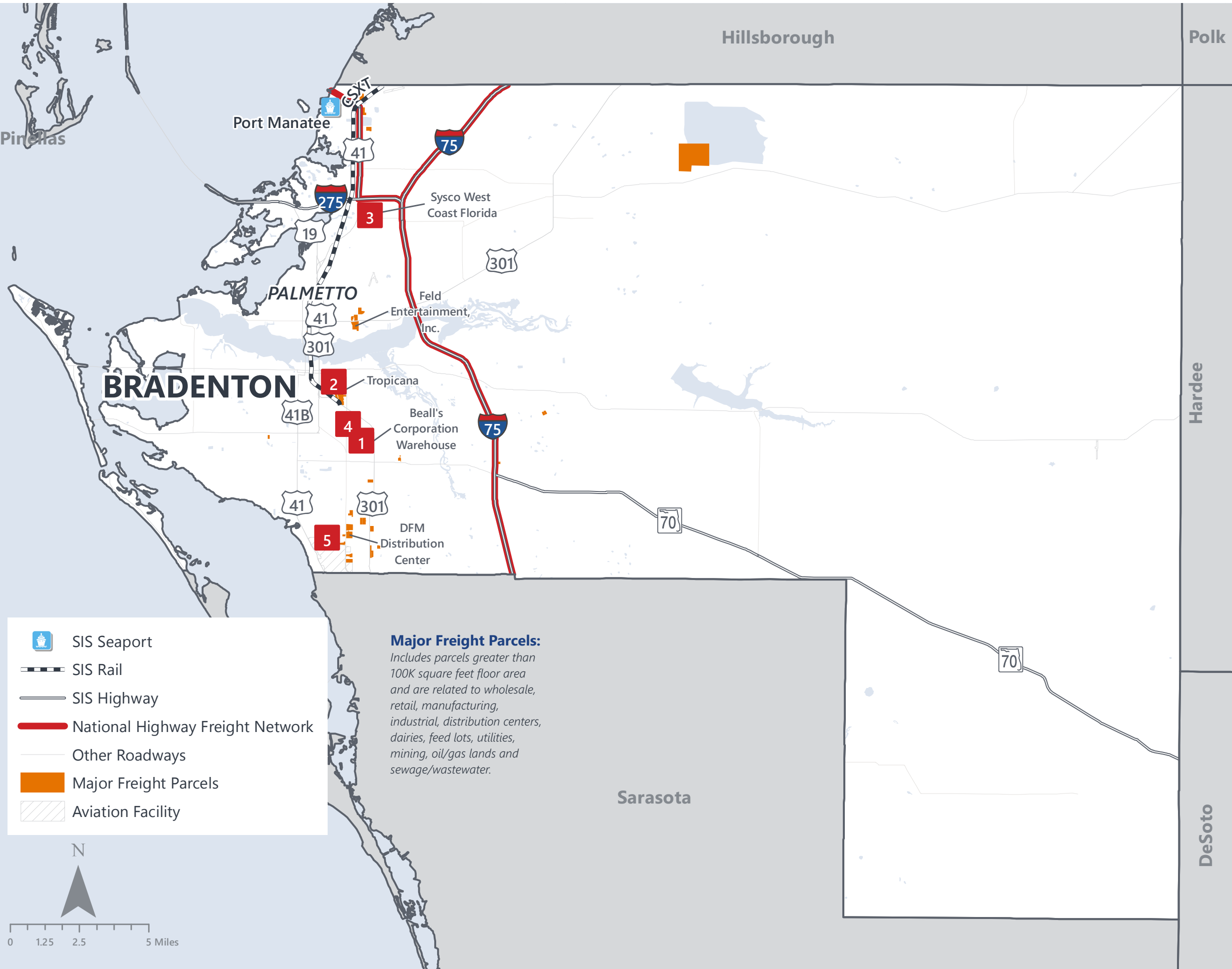
DOMESTIC IMPORTS (TONNAGE)

1	Louisiana	573,528
2	Texas	543,627
3	Mississippi	276,759
4	Georgia	211,770
5	Alabama	122,936

INTRASTATE IMPORTS (TONNAGE)

1	Hillsborough	1,028,971
2	Lee	517,447
3	Miami-Dade	495,793
4	Polk	411,510
5	Hernando	410,943

MANATEE COUNTY FREIGHT INFRASTRUCTURE



LARGEST FREIGHT EMPLOYERS

1	Bealls	900-1K
2	Tropicana	800-900
3	Sysco	400-500
4	Pierce Mfg.	400-500
5	USPS	300-400

MAJOR FREIGHT LAND USES

28.2 M SQ.FT Floor Area

60.90%	Warehousing and distribution centers
23.82%	Light manufacturing
7.93%	Heavy industrial
2.68%	Fruit, vegetable and meat packing plants
1.19%	Utilities

844.3 M SQ.FT LAND AREA

59.84%	Mining lands, petroleum lands, or gas lands
14.57%	Warehousing and distribution centers
9.13%	Utilities
6.91%	Minerals processing and construction material plants
5.07%	Light manufacturing

Florida Department of Economic Opportunity, 2018
Florida Department of Revenue, 2019

MAJOR COUNTY COMMODITIES



IMPORTS



TOP COMMODITY by Tonnage, 2018 (relative to Florida)

FL Rank	Commodity	% Florida Share
10	Pulp, Paper or Allied Products	3.70%
9	Petroleum or Coal Products	2.68%
9	Chemicals or Allied Products	2.40%
14	Clay, Concrete, Glass, Stone	2.33%
13	Food or Kindred Products	2.25%

EXPORTS



FL Rank	Commodity	% Florida Share
3	Farm Products	6.06%
6	Food or Kindred Products	6.04%
5	Primary Metal Products	4.82%
10	Rubber or Misc. Plastics	3.12%
10	Waste or Scrap Materials	3.05%

TOP COMMODITY by Value, 2018 (relative to Florida)

FL Rank	Commodity	% Florida Share
10	Pulp, Paper or Allied Products	3.34%
6	Petroleum or Coal Products	2.78%
14	Clay, Concrete, Glass, Stone	2.24%
11	Farm Products	2.11%
13	Food or Kindred Products	1.93%

FL Rank	Commodity	% Florida Share
3	Farm Products	9.26%
5	Nonmetallic Minerals	7.47%
8	Food or Kindred Products	5.90%
7	Primary Metal Products	3.81%
6	Ordinance or Accessories	2.78%



TRANSPORTATION STATISTICS AND FREIGHT MOVEMENT BY MODE



553 K | Daily Truck Miles Traveled
1.55 | Planning Time Index
1,968 | Public Roadway Mileage



1 Major Seaport | Port Manatee



14.32 | Class I Mainline Miles (CSX)
- | Class II Mainline Miles
7.26 | Class III Mainline Miles (SGLR)



1 Major Airport | Sarasota/Bradenton International Airport

FLORIDA HIGHLIGHTS

3rd most populous US State

\$1T Gross Domestic Product

4th Largest US Economy and **17th Largest** Economy in World

Nation's **3rd largest** workforce

1 in 5 U.S. exporters are located in Florida

\$153B International Trade

1.76M jobs supported by Trade, Transportation and Utilities industry sector

1.25M jobs supported by Leisure and Hospitality industry sector

131M annual visitors

CAPITAL **TALLAHASSEE**

AREA
(SQ. MILES) **53,624**

LARGEST
CITY (SIZE) **JACKSONVILLE**

POPULATION
(2019) **21,208,589**

ANNUAL POP
GROWTH RATE
(2010-2019) **1.4%**

EMPLOYMENT
(2019) **8,884,065**

ANNUAL EMP
GROWTH RATE
(2010-2019) **2.8%**

*Bureau of Economic Business Research,
Bureau of Labor Statistics*

DOMESTIC IMPORTS

1	GEORGIA	\$44B
2	CALIFORNIA	\$29B
3	TEXAS	\$26B
4	ALABAMA	\$18B
5	ILLINOIS	\$18B

DOMESTIC EXPORTS

1	GEORGIA	\$22B
2	TEXAS	\$19B
3	CALIFORNIA	\$15B
4	NORTH CAROLINA	\$12B
5	NEW YORK	\$10B

INTERNATIONAL IMPORTS

1	CHINA	\$9.5B
2	JAPAN	\$6.5B
3	BRAZIL	\$6.4B
4	MEXICO	\$4.5B
5	CHILE	\$3.7B

INTERNATIONAL EXPORTS

1	BRAZIL	\$13.4B
2	COLOMBIA	\$4.2B
3	ARGENTINA	\$3.6B
4	DOMINICAN REPUBLIC	\$3.1B
5	CHILE	\$3B

TRANSPORTATION STATISTICS AND FREIGHT MOVEMENT BY MODE



83%
TONNAGE

71%
VALUE

123,104 Public roadway mileage
12,130 State Highway System (SHS) mileage
30.7M Daily truck miles traveled on SHS
98 Public truck parking facilities



3.5%
TONNAGE

2.9%
VALUE

15 Deepwater seaports
4.1M Twenty-foot equivalent units (TEUs)
16.8M Annual cruise passengers



6.7%
TONNAGE

1.8%
VALUE

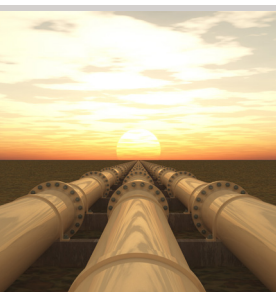
2,936 Miles of roads
6.9M Annual rail passenger traffic



0.1%
TONNAGE

5.4%
VALUE

129 Public use airports
20 Commercial service airports
2 Active spaceports



3.6%
TONNAGE

1%
VALUE

5,899 Miles of gas transmission and hazardous liquid pipelines



3.1%
TONNAGE

17.9%
VALUE

Includes shipments by multiple modes and by parcel delivery services, U.S. Postal Service, or couriers (capped at 150 pounds). This category is not limited to containerized or trailer-on-flatcar shipments.

FLORIDA COMMODITY FLOWS (2018-2045)



IMPORTS



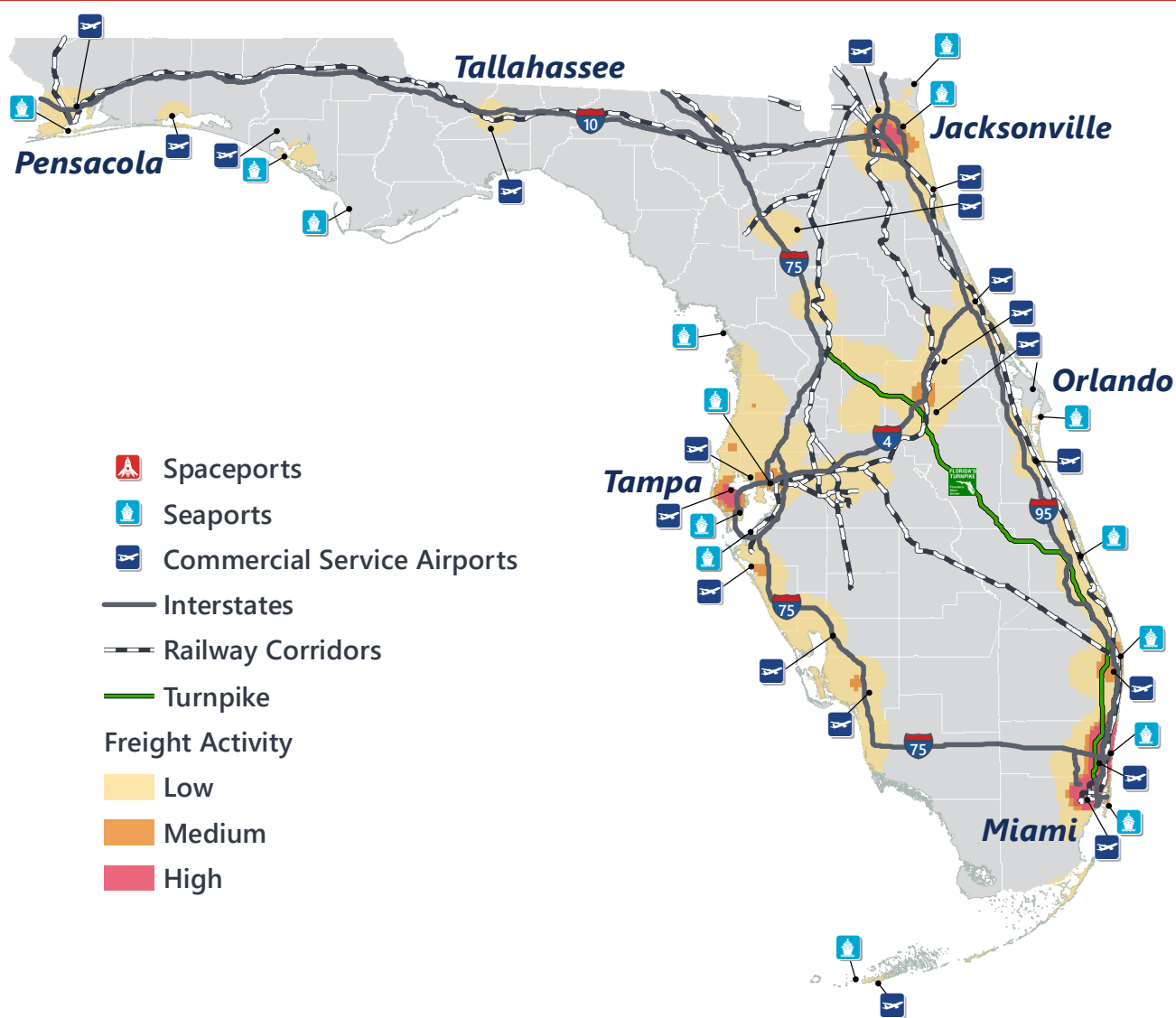
WITHIN FL



EXPORTS

	2018	2045	2018	2045	2018	2045
TONNAGE	142M	190M	656M	761M	57M	103M
VALUE	\$321B	\$690B	\$402B	\$844B	\$180B	\$606B

Freight Analysis Framework (FAF) 4.5.1.



Rickey Fitzgerald
Manager, Freight & Multimodal Operations
 Florida Department of Transportation
 605 Suwannee Street, Tallahassee, FL 32399
 Rickey.Fitzgerald@dot.state.fl.us
 850.414.4702