

FREIGHT AND LOGISTICS OVERVIEW

FEBRUARY 2021

MADISON COUNTY



Mission: The department will provide a safe transportation system that ensures the mobility of people and goods, enhances economic prosperity, and preserves the quality of our environment and communities.

MADISON COUNTY HIGHLIGHTS

"OUR ATTRACTION IS ONLY NATURAL"

AREA (SQ . MILES)

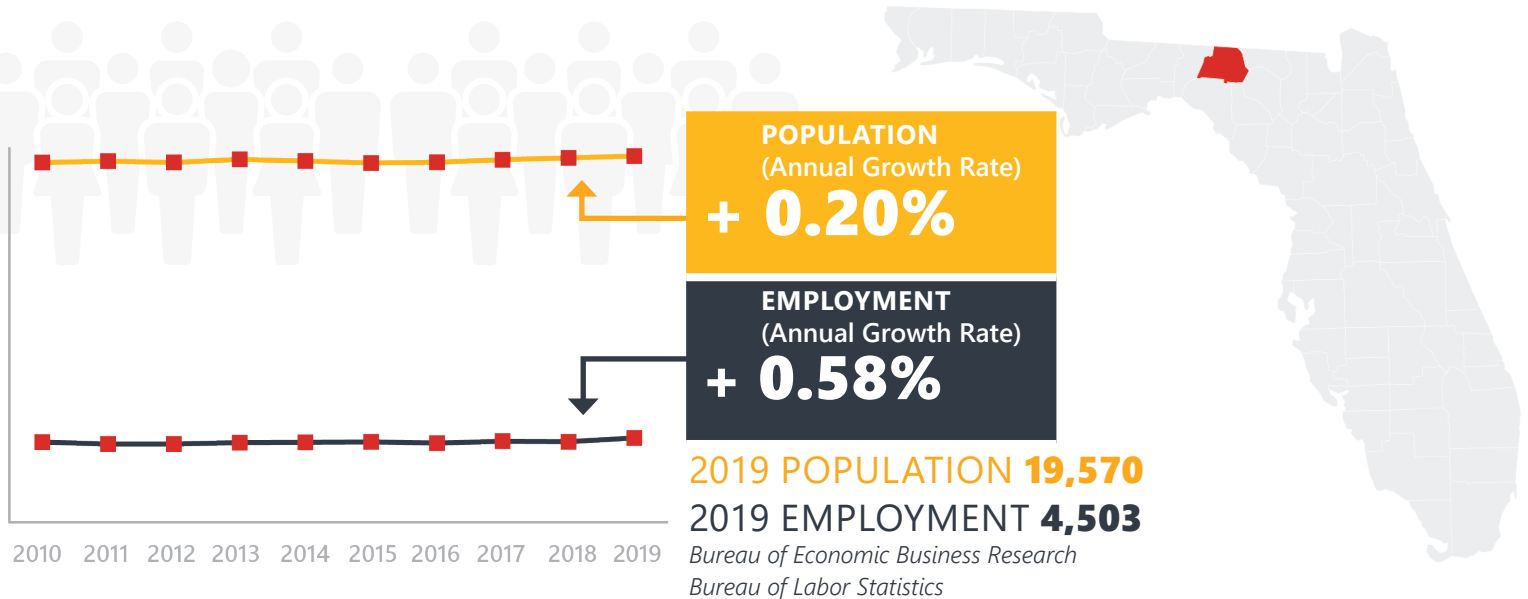
716

COUNTY SEAT

MADISON

LARGEST CITY (SIZE)

MADISON

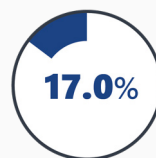


LARGEST INDUSTRY SECTORS BY EMPLOYMENT (2019)

Office of Economic and Demographic Research



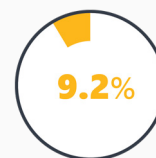
Education & health services



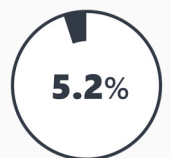
Trade, transportation & utilities



Manufacturing



Leisure & hospitality



Natural resources and mining

FASTEST GROWING INDUSTRIES (2010-2019)

EDUCATION AND HEALTH SERVICES	173
MANUFACTURING	164
LEISURE AND HOSPITALITY	109
INFORMATION	23
FINANCIAL ACTIVITIES	16

JOBS ADDED

Bureau of Labor Statistics

DID YOU KNOW?

The Madison Blue Springs State Park, a first magnitude spring located on the eastern border of the county, was voted the best swimming hole in the nation by the USA Today's Reader's Choice Award.

Madison County is home to "The Loop", a 135 mile cycling route through challenging hills and farmlands of North Florida.

The Town of Greenville renovated the childhood home of entertainer Ray Charles into a museum and his life-sized bronze statue is displayed in Haffye Hayes Park on US Highway 90.

COMMODITY FLOW HIGHLIGHTS



IMPORTS

WITHIN COUNTY

EXPORTS

	2018	2045	2018	2045	2018	2045
Tonnage:	213.04 K	271.39 K	1.59 K	2.19 K	337.55 K	527.60 K
Value:	\$ 0.15 B	\$ 0.22 B	\$ 918.69 K	\$ 1.83 M	\$ 0.21 B	\$ 0.38 B



TOP COMMODITY by Tonnage, 2018

Food or Kindred Products	40,610
Farm Products	39,578
Lumber or Wood Products	36,024
Petroleum or Coal Products	33,132
Warehouse, Distribution Center and Drayage Movements	23,670



Farm Products	177,660
Lumber or Wood Products	126,739
Food or Kindred Products	14,174
Clay, Concrete, Glass, Stone	7,791
Waste or Scrap Materials	6,238



TOP COMMODITY by Value, 2018

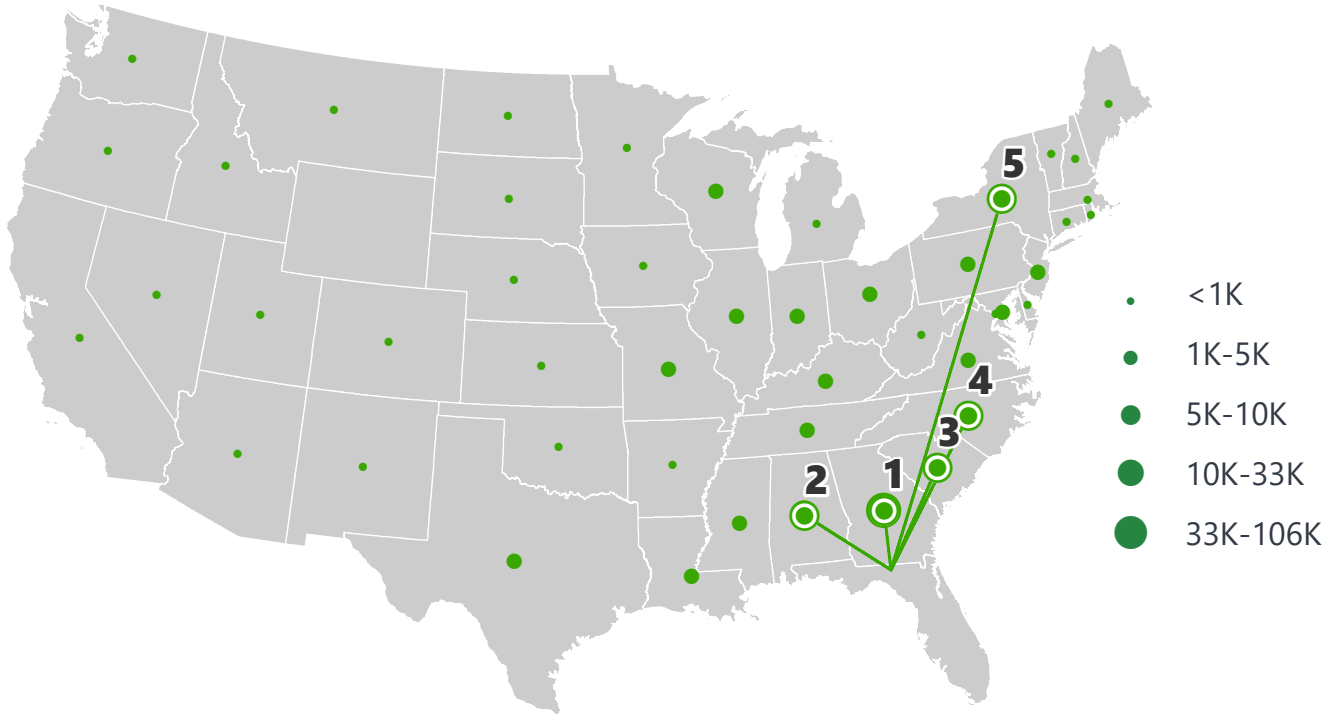
Farm Products	\$ 44,753,548
Warehouse, Distribution Center and Drayage Movements	\$ 30,624,235
Petroleum or Coal Products	\$ 19,675,376
Food or Kindred Products	\$ 13,495,184
Primary Metal Products	\$ 11,351,800



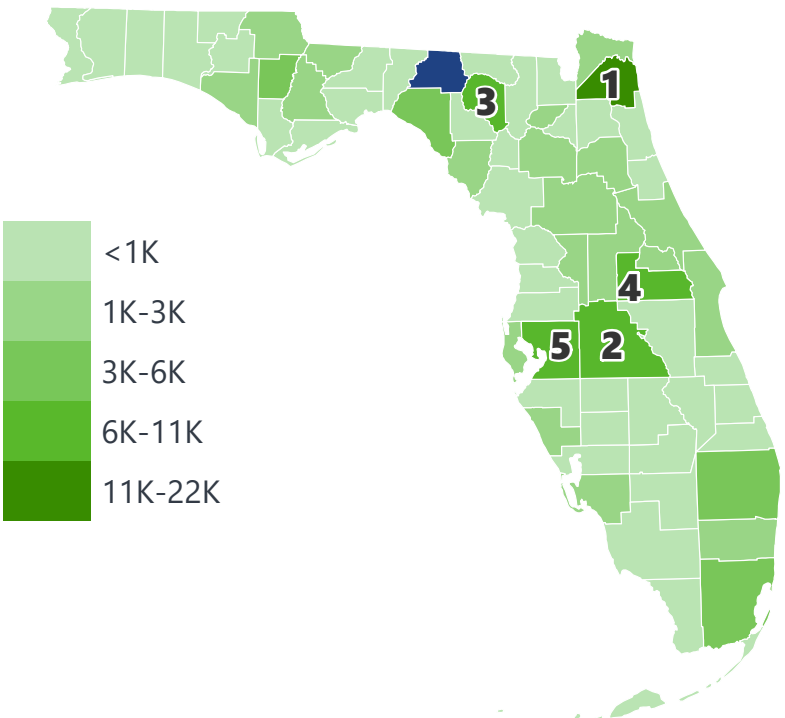
Farm Products	\$ 121,999,878
Lumber or Wood Products	\$ 42,441,597
Food or Kindred Products	\$ 32,007,567
Warehouse, Distribution Center and Drayage Movements	\$ 5,784,184
Rubber or Misc. Plastics	\$ 3,348,898

MADISON COUNTY EXPORTS AND IMPORTS

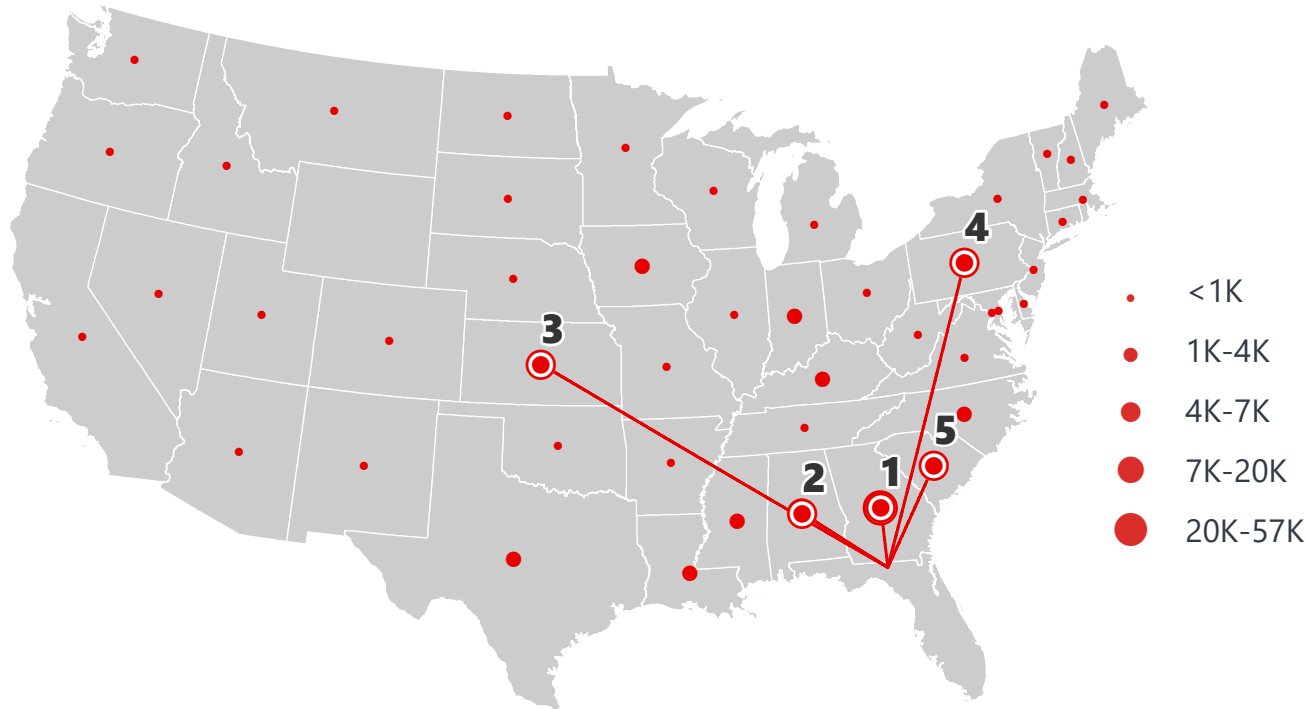
DOMESTIC EXPORTS (TONS)



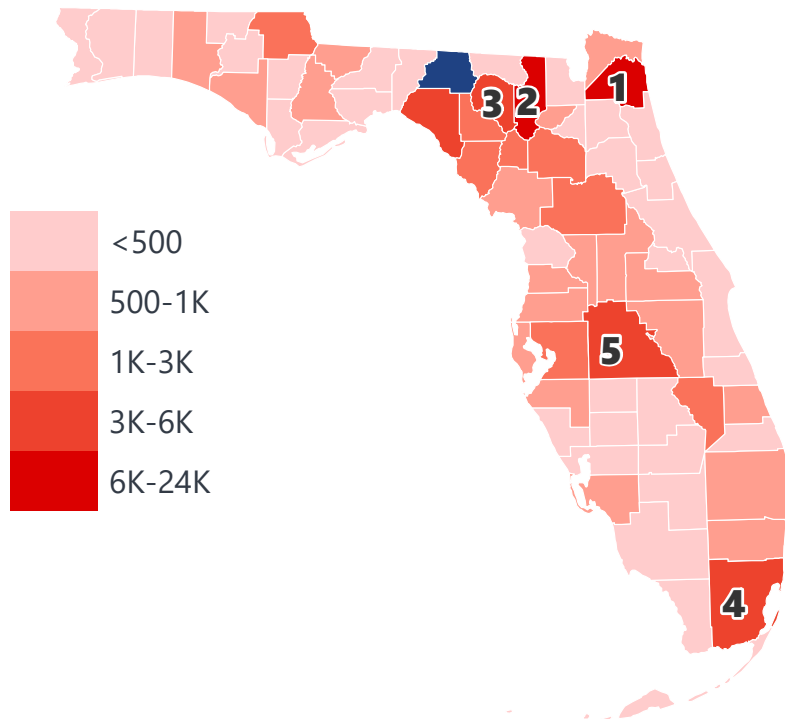
INTRASTATE EXPORTS (TONS)



DOMESTIC IMPORTS (TONS)



INTRASTATE IMPORTS (TONS)



DOMESTIC EXPORTS (TONNAGE)

1	Georgia	105,868
2	Alabama	32,938
3	South Carolina	10,635
4	North Carolina	8,826
5	New York	4,494

INTRASTATE EXPORTS (TONNAGE)

1	Duval	21,868
2	Polk	11,489
3	Suwannee	9,382
4	Orange	8,785
5	Hillsborough	8,051

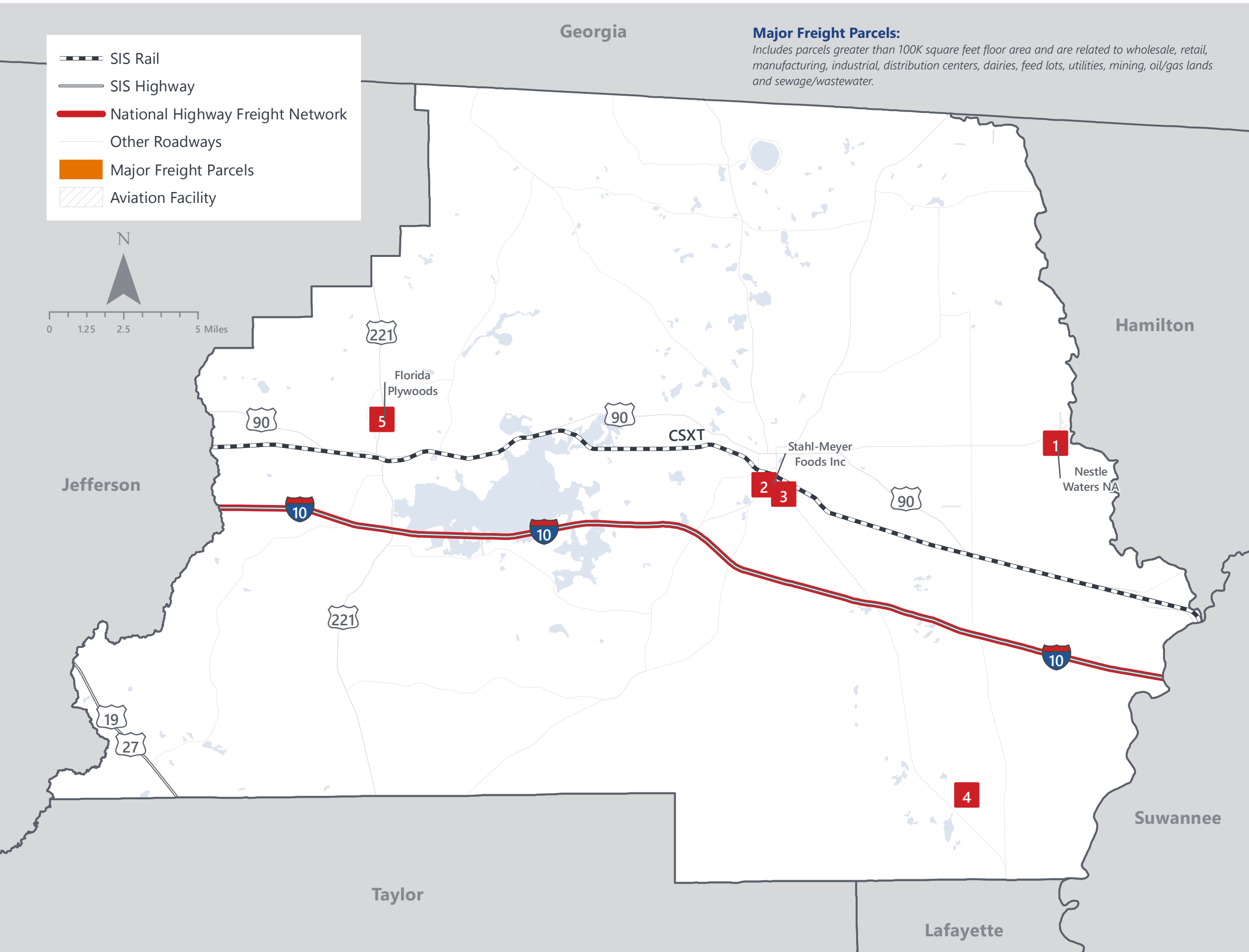
DOMESTIC IMPORTS (TONNAGE)

1	Georgia	56,010
2	Alabama	19,415
3	Kansas	7,593
4	Pennsylvania	5,019
5	South Carolina	3,922

INTRASTATE IMPORTS (TONNAGE)

1	Duval	23,300
2	Columbia	14,398
3	Suwannee	5,945
4	Miami-Dade	4,209
5	Polk	4,182

MADISON COUNTY FREIGHT INFRASTRUCTURE



LARGEST FREIGHT EMPLOYERS

1	Nestle Waters North America	200-300
2	Stahl-Meyer Foods	100-200
3	Corporate Graphics	50-100
4	Swiss Haven Dairy	50-100
5	Florida Plywoods	0-50

MAJOR FREIGHT LAND USES

1.4 M SQ.FT Floor Area

44.49%	Canneries, bottlers and brewers, distilleries, wineries
18.72%	Warehousing and distribution centers
15.88%	Heavy industrial
8.92%	Lumber yards, sawmills, planing mills
4.75%	Light manufacturing

17.2 M SQ.FT LAND AREA

20.81%	Canneries, bottlers and brewers, distilleries, wineries
20.68%	Warehousing and distribution centers
19.62%	Utilities
18.71%	Heavy industrial
11.21%	Lumber yards, sawmills, planing mills

Florida Department of Economic Opportunity, 2018
Florida Department of Revenue, 2019

MAJOR COUNTY COMMODITIES



IMPORTS



TOP COMMODITY by Tonnage, 2018 (relative to Florida)

FL Rank	Commodity	% Florida Share
41	Forest Products	0.40%
43	Lumber or Wood Products	0.27%
34	Farm Products	0.27%
43	Food or Kindred Products	0.16%
44	Marine Products	0.09%

EXPORTS



FL Rank	Commodity	% Florida Share
22	Lumber or Wood Products	1.36%
20	Farm Products	1.28%
39	Forest Products	0.30%
26	Printed Matter	0.16%
36	Food or Kindred Products	0.09%

TOP COMMODITY by Value, 2018 (relative to Florida)

FL Rank	Commodity	% Florida Share
31	Farm Products	0.52%
41	Forest Products	0.35%
31	Primary Metal Products	0.17%
50	Lumber or Wood Products	0.11%
43	Marine Products	0.09%

FL Rank	Commodity	% Florida Share
19	Farm Products	1.37%
35	Lumber or Wood Products	0.85%
39	Forest Products	0.28%
30	Food or Kindred Products	0.21%
29	Printed Matter	0.11%



TRANSPORTATION STATISTICS AND FREIGHT MOVEMENT BY MODE



223 K | Daily Truck Miles Traveled
1.19 | Planning Time Index
879 | Public Roadway Mileage



120 Miles | Distance from closest seaport (JAXPORT)



36.99 | Class I Mainline Miles (CSX)
- | Class II Mainline Miles
25.59 | Class III Mainline Miles (GFRR)



64 Miles | Distance from closest airport (Tallahassee International Airport)

FLORIDA HIGHLIGHTS

3rd most populous US State

\$1T Gross Domestic Product

4th Largest US Economy and **17th Largest** Economy in World

Nation's **3rd largest** workforce

1 in 5 U.S. exporters are located in Florida

\$153B International Trade

1.76M jobs supported by Trade, Transportation and Utilities industry sector

1.25M jobs supported by Leisure and Hospitality industry sector

131M annual visitors

CAPITAL **TALLAHASSEE**

AREA
(SQ. MILES) **53,624**

LARGEST
CITY (SIZE) **JACKSONVILLE**

POPULATION
(2019) **21,208,589**

ANNUAL POP
GROWTH RATE
(2010-2019) **1.4%**

EMPLOYMENT
(2019) **8,884,065**

ANNUAL EMP
GROWTH RATE
(2010-2019) **2.8%**

*Bureau of Economic Business Research,
Bureau of Labor Statistics*

DOMESTIC IMPORTS

1	GEORGIA	\$44B
2	CALIFORNIA	\$29B
3	TEXAS	\$26B
4	ALABAMA	\$18B
5	ILLINOIS	\$18B

DOMESTIC EXPORTS

1	GEORGIA	\$22B
2	TEXAS	\$19B
3	CALIFORNIA	\$15B
4	NORTH CAROLINA	\$12B
5	NEW YORK	\$10B

INTERNATIONAL IMPORTS

1	CHINA	\$9.5B
2	JAPAN	\$6.5B
3	BRAZIL	\$6.4B
4	MEXICO	\$4.5B
5	CHILE	\$3.7B

INTERNATIONAL EXPORTS

1	BRAZIL	\$13.4B
2	COLOMBIA	\$4.2B
3	ARGENTINA	\$3.6B
4	DOMINICAN REPUBLIC	\$3.1B
5	CHILE	\$3B

TRANSPORTATION STATISTICS AND FREIGHT MOVEMENT BY MODE



83%
TONNAGE

71%
VALUE

123,104 Public roadway mileage
12,130 State Highway System (SHS) mileage
30.7M Daily truck miles traveled on SHS
98 Public truck parking facilities



3.5%
TONNAGE

2.9%
VALUE

15 Deepwater seaports
4.1M Twenty-foot equivalent units (TEUs)
16.8M Annual cruise passengers



6.7%
TONNAGE

1.8%
VALUE

2,936 Miles of roads
6.9M Annual rail passenger traffic



0.1%
TONNAGE

5.4%
VALUE

129 Public use airports
20 Commercial service airports
2 Active spaceports



3.6%
TONNAGE

1%
VALUE

5,899 Miles of gas transmission and hazardous liquid pipelines



3.1%
TONNAGE

17.9%
VALUE

Includes shipments by multiple modes and by parcel delivery services, U.S. Postal Service, or couriers (capped at 150 pounds). This category is not limited to containerized or trailer-on-flatcar shipments.

FLORIDA COMMODITY FLOWS (2018-2045)



IMPORTS



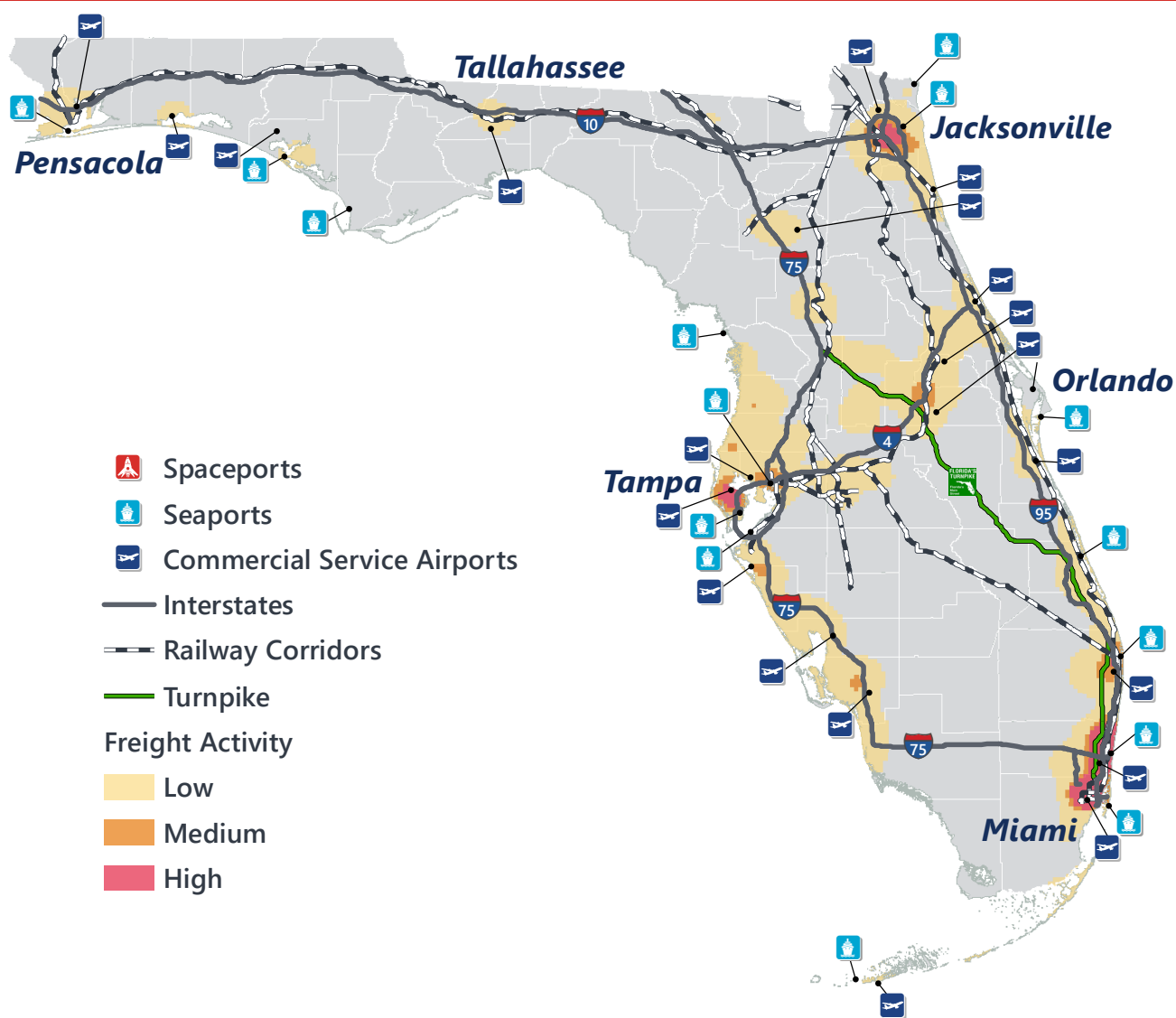
WITHIN FL



EXPORTS

	2018	2045	2018	2045	2018	2045
TONNAGE	142M	190M	656M	761M	57M	103M
VALUE	\$321B	\$690B	\$402B	\$844B	\$180B	\$606B

Freight Analysis Framework (FAF) 4.5.1.



Rickey Fitzgerald
Manager, Freight & Multimodal Operations
 Florida Department of Transportation
 605 Suwannee Street, Tallahassee, FL 32399
 Rickey.Fitzgerald@dot.state.fl.us
 850.414.4702