

FREIGHT AND LOGISTICS OVERVIEW

FEBRUARY 2021

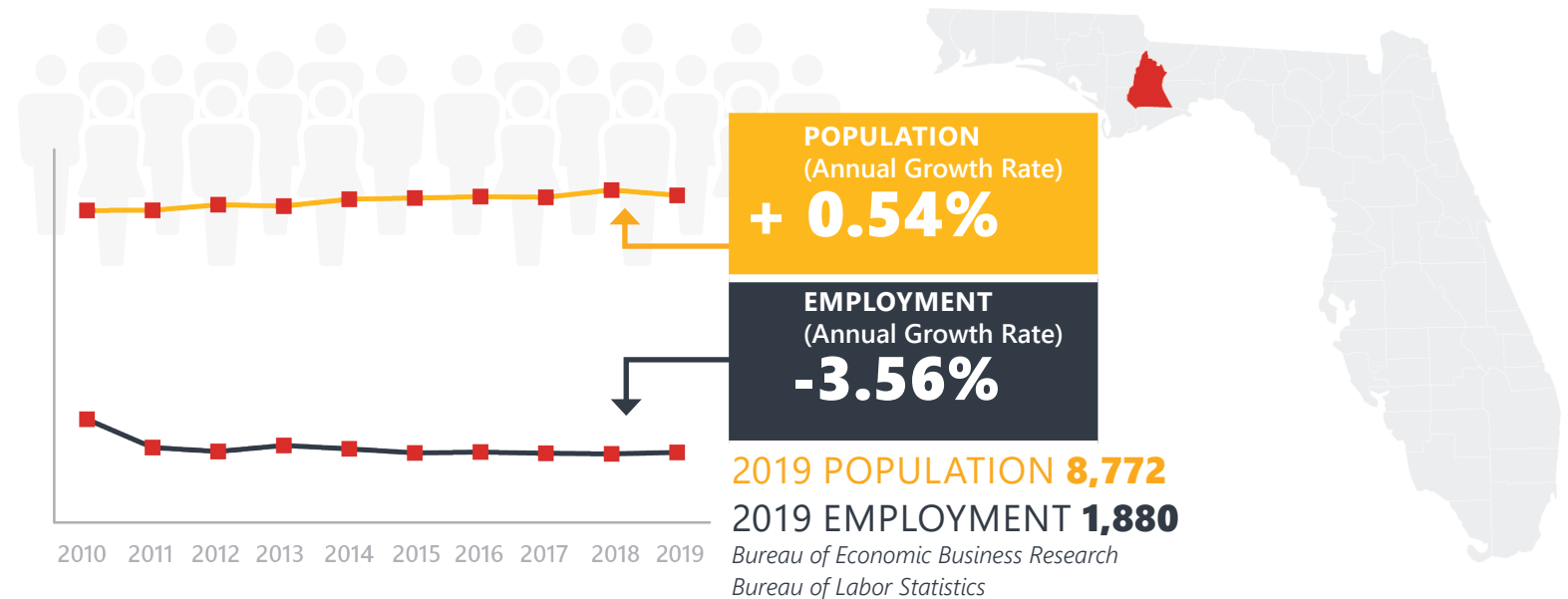
LIBERTY COUNTY



Mission: The department will provide a safe transportation system that ensures the mobility of people and goods, enhances economic prosperity, and preserves the quality of our environment and communities.

LIBERTY COUNTY HIGHLIGHTS

"RAILS, TRAILS AND RIVERS"		AREA (SQ . MILES)	843
COUNTY SEAT	BRISTOL	LARGEST CITY (SIZE)	BRISTOL



LARGEST INDUSTRY SECTORS BY EMPLOYMENT (2019)

Office of Economic and Demographic Research



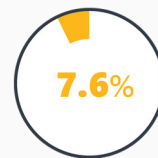
Education & health services



Manufacturing



Trade, transportation & utilities



Natural resources and mining



Construction

FASTEST GROWING INDUSTRIES (2010-2019)

MANUFACTURING	JOBS ADDED	142
NATURAL RESOURCES AND MINING		142
CONSTRUCTION		51
TRADE, TRANSPORTATION, AND UTILITIES		16

Bureau of Labor Statistics

DID YOU KNOW?

Timberland dominates Liberty County; the Apalachicola National Forest comprises of more than 250,000 acres in the county. Torreya State Park, Northwest Florida Water Management District and The Nature Conservancy contribute to the timberland industry in the county as well.

Liberty is one of Florida's largest counties in terms of land area, but is the smallest population-wise.

COMMODITY FLOW HIGHLIGHTS



IMPORTS

WITHIN COUNTY

EXPORTS

2018

2045

2018

2045

2018

2045

Tonnage:	199.88 K	129.04 K	7.91 K	1.47 K	395.08 K	231.19 K
Value:	\$ 62.21 M	\$ 49.45 M	\$ 2.07 M	\$ 561.55 K	\$ 181.30 M	\$ 137.46 M



TOP COMMODITY by Tonnage, 2018



Lumber or Wood Products	176,448
Petroleum or Coal Products	11,194
Warehouse, Distribution Center and Drayage Movements	6,054
Clay, Concrete, Glass, Stone	3,564
Forest Products	1,549

Lumber or Wood Products	377,201
Forest Products	11,756
Farm Products	4,352
Waste or Scrap Materials	1,342
Warehouse, Distribution Center and Drayage Movements	424



TOP COMMODITY by Value, 2018

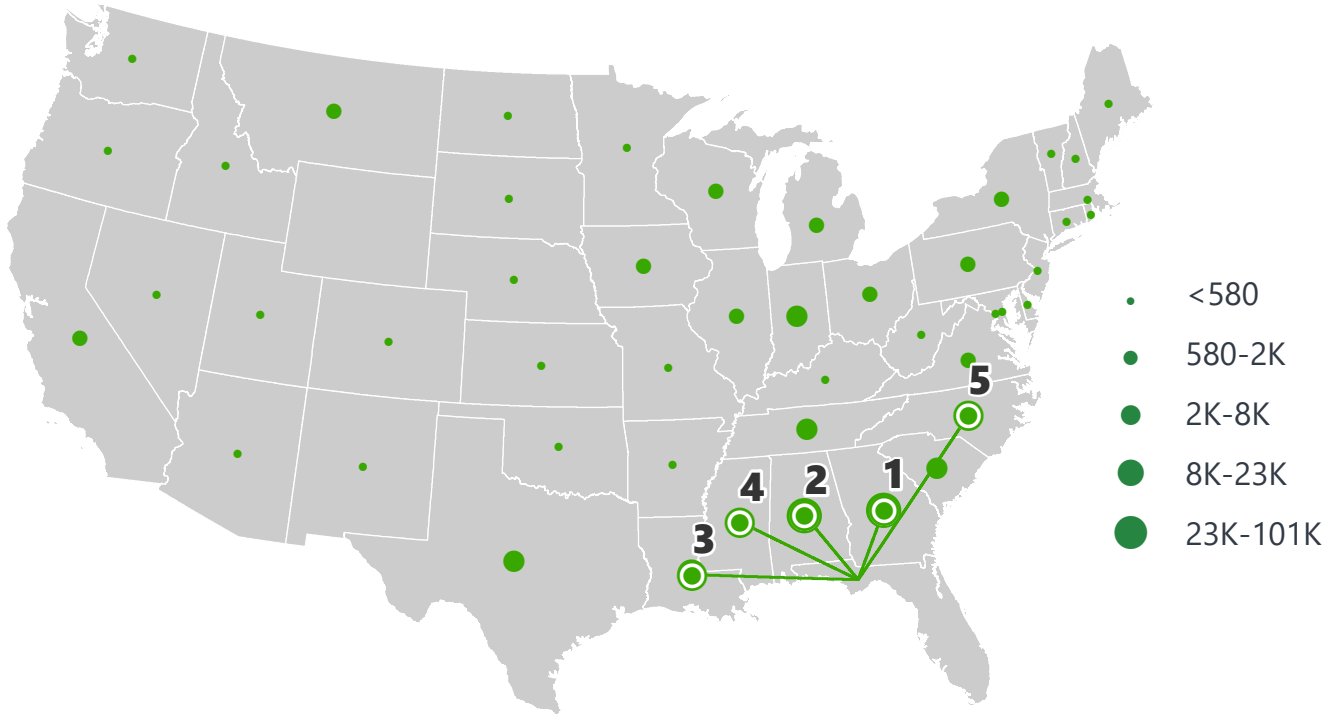


Lumber or Wood Products	\$ 43,342,452
Warehouse, Distribution Center and Drayage Movements	\$ 8,272,912
Petroleum or Coal Products	\$ 6,808,296
Forest Products	\$ 1,913,132
Transportation Equipment	\$ 1,303,061

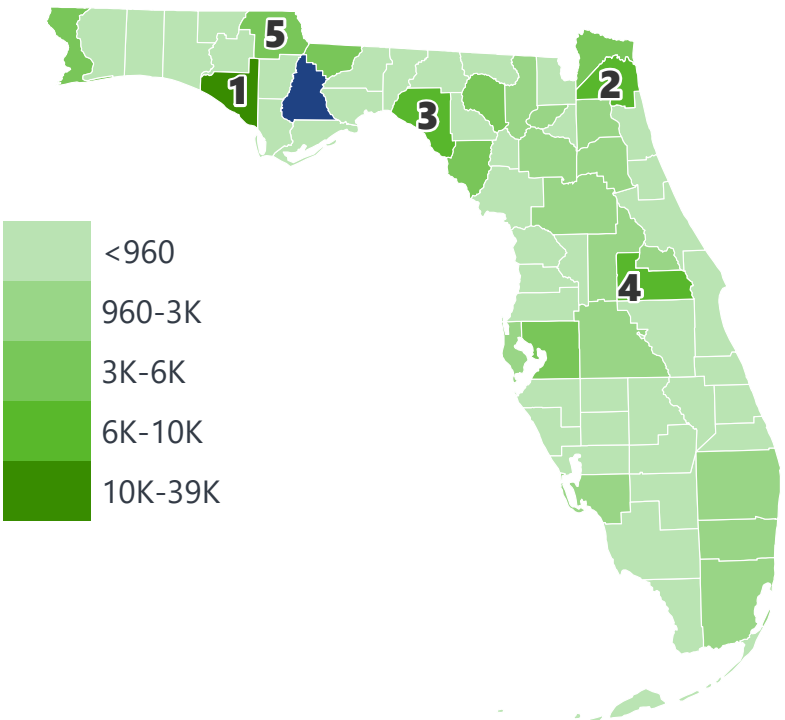
Lumber or Wood Products	\$ 161,150,442
Forest Products	\$ 15,461,712
Farm Products	\$ 2,743,571
Warehouse, Distribution Center and Drayage Movements	\$ 1,616,426
Waste or Scrap Materials	\$ 323,662

LIBERTY COUNTY EXPORTS AND IMPORTS

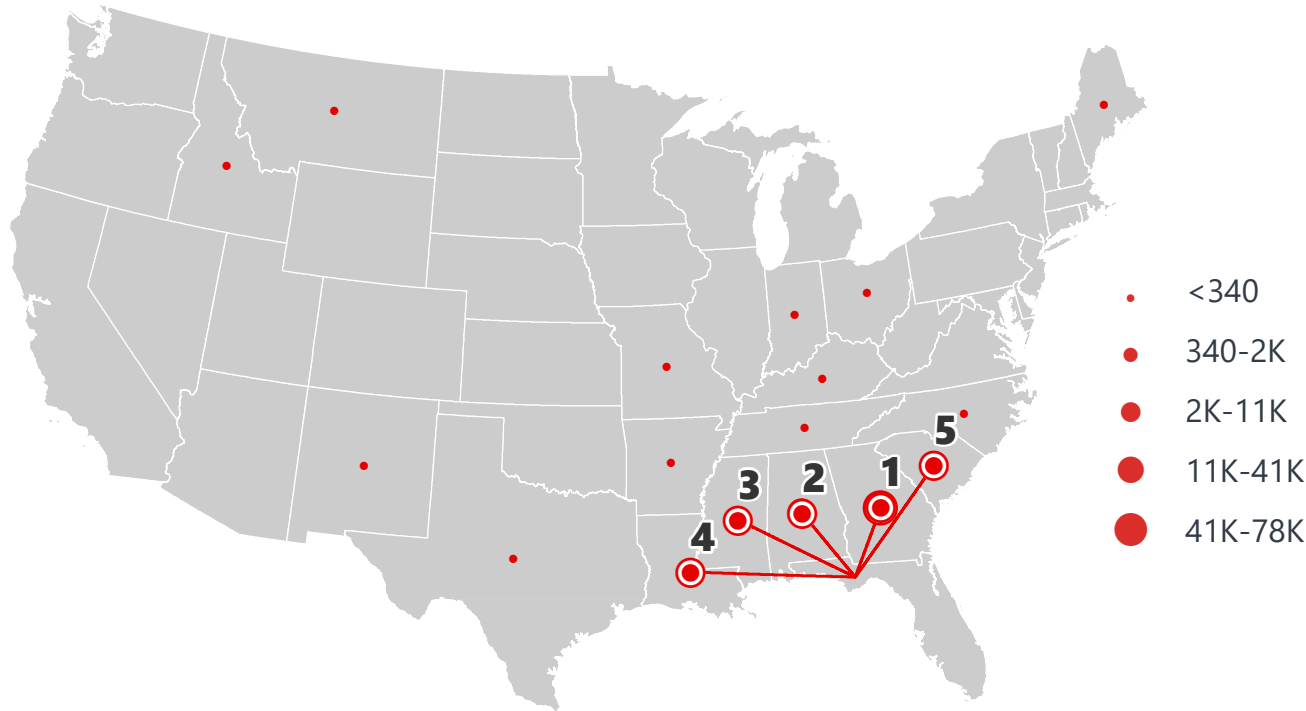
DOMESTIC EXPORTS (TONS)



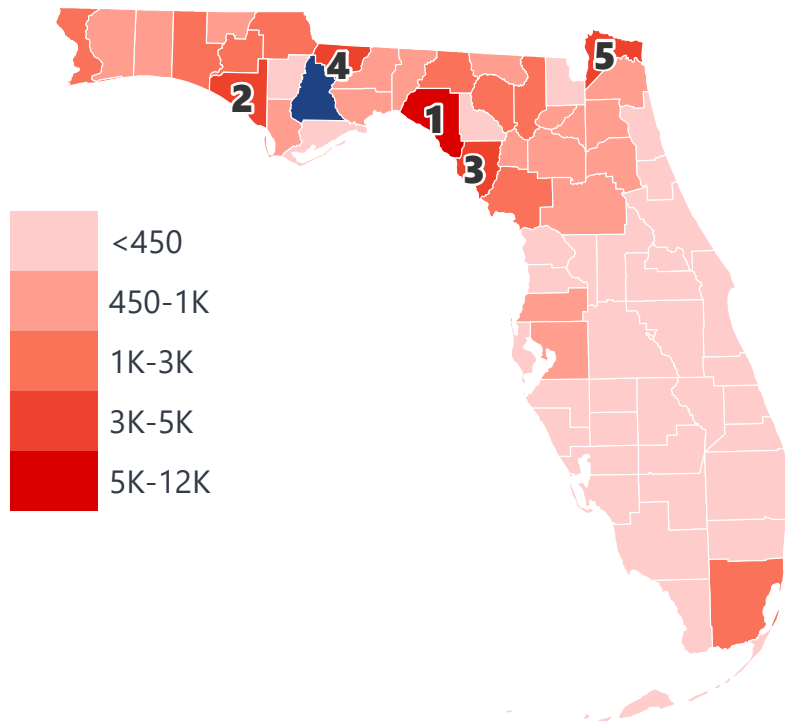
INTRASTATE EXPORTS (TONS)



DOMESTIC IMPORTS (TONS)



INTRASTATE IMPORTS (TONS)



DOMESTIC EXPORTS (TONNAGE)

1	Georgia	100,279
2	Alabama	72,384
3	Louisiana	22,964
4	Mississippi	8,289
5	North Carolina	6,830

INTRASTATE EXPORTS (TONNAGE)

1	Bay	38,911
2	Duval	10,373
3	Taylor	10,153
4	Orange	7,564
5	Jackson	6,112

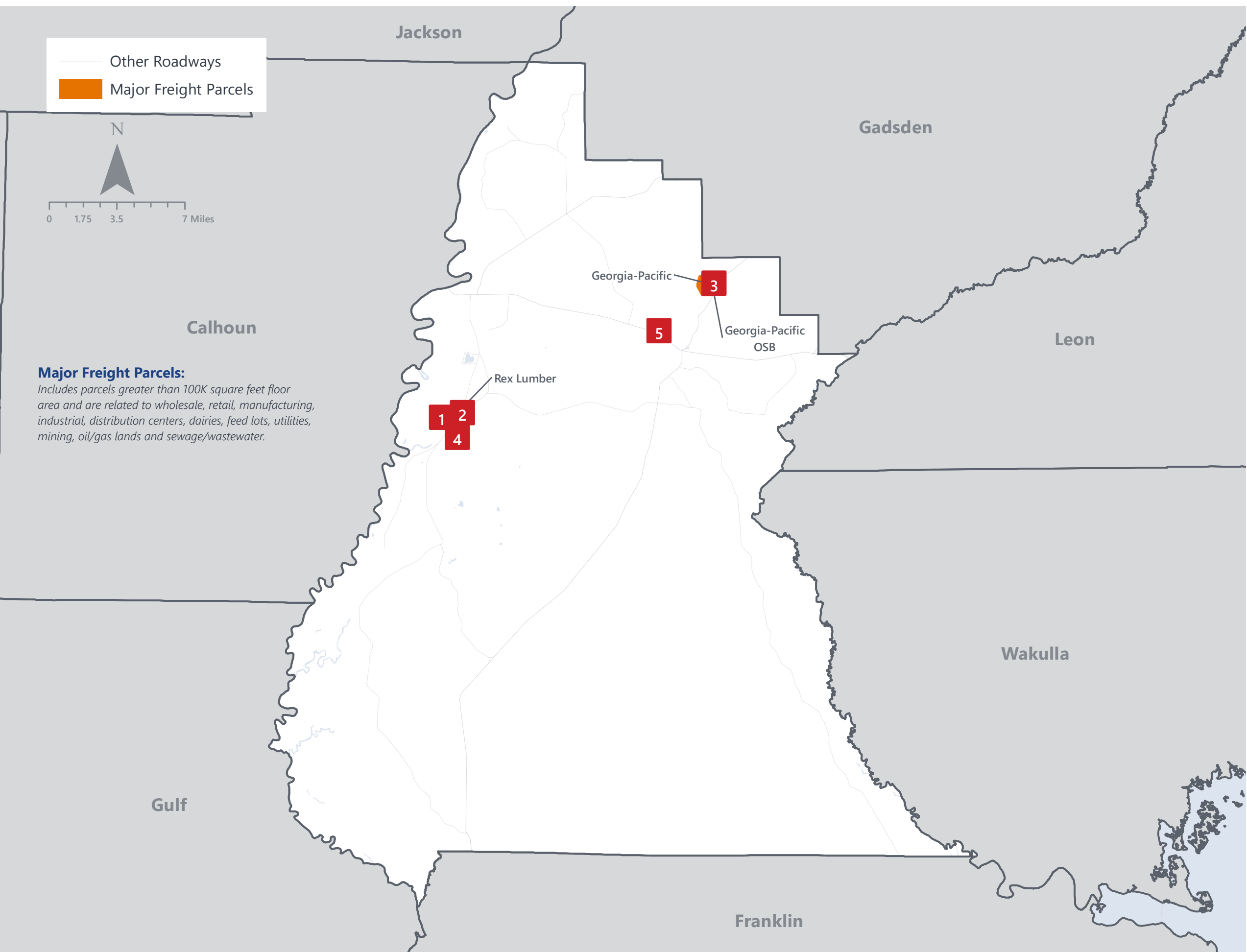
DOMESTIC IMPORTS (TONNAGE)

1	Georgia	77,107
2	Alabama	41,283
3	Mississippi	10,870
4	Louisiana	2,194
5	South Carolina	1,758

INTRASTATE IMPORTS (TONNAGE)

1	Taylor	11,774
2	Bay	4,599
3	Dixie	4,404
4	Gadsden	3,681
5	Nassau	3,317

LIBERTY COUNTY FREIGHT INFRASTRUCTURE



LARGEST FREIGHT EMPLOYERS

1	Rex Lumber Bristol	100-200
2	North Florida Lumber	100-200
3	Georgia Pacific Wood Products	100-200
4	Apalachee Pole Company	0-50
5	Williams Bros	0-50

MAJOR FREIGHT LAND USES

1.3 M SQ.FT Floor Area

90.36%	Lumber yards, sawmills, planing mills
6.36%	Light manufacturing
1.44%	Warehousing and distribution centers
0.93%	Utilities
0.38%	Fruit, vegetable and meat packing plants

57.0 M SQ.FT LAND AREA

71.26%	Lumber yards, sawmills, planing mills
13.24%	Utilities
10.54%	Light manufacturing
1.99%	Fruit, vegetable and meat packing plants
1.70%	Open storage

Florida Department of Economic Opportunity, 2018
Florida Department of Revenue, 2019

MAJOR COUNTY COMMODITIES



IMPORTS



TOP COMMODITY by Tonnage, 2018 (relative to Florida)

FL Rank	Commodity	% Florida Share
19	Forest Products	1.42%
21	Lumber or Wood Products	1.31%
67	Petroleum or Coal Products	0.02%
67	Warehouse, Distribution Center and Drayage Movements	0.01%
67	Clay, Concrete, Glass, Stone	0.01%

EXPORTS



FL Rank	Commodity	% Florida Share
4	Forest Products	6.12%
7	Lumber or Wood Products	4.05%
63	Farm Products	0.03%
67	Waste or Scrap Materials	0.01%
60	Warehouse, Distribution Center and Drayage Movements	0.00%

TOP COMMODITY by Value, 2018 (relative to Florida)

FL Rank	Commodity	% Florida Share
19	Forest Products	1.25%
33	Lumber or Wood Products	0.55%
67	Petroleum or Coal Products	0.02%
67	Warehouse, Distribution Center and Drayage Movements	0.01%
67	Clay, Concrete, Glass, Stone	0.00%

FL Rank	Commodity	% Florida Share
4	Forest Products	6.25%
10	Lumber or Wood Products	3.22%
61	Farm Products	0.03%
67	Waste or Scrap Materials	0.00%
58	Warehouse, Distribution Center and Drayage Movements	0.00%



TRANSPORTATION STATISTICS AND FREIGHT MOVEMENT BY MODE



24 K | Daily Truck Miles Traveled
- Planning Time Index
814 | Public Roadway Mileage



80 Miles | Distance from closest major seaport (Port of Port St. Joe)



- Class I Mainline Miles
- Class II Mainline Miles
36.58 | Class III Mainline Miles (AN)



50 Miles | Distance from closest major airport (Tallahassee International Airport)

FLORIDA HIGHLIGHTS

3rd most populous US State

\$1T Gross Domestic Product

4th Largest US Economy and **17th Largest** Economy in World

Nation's **3rd largest** workforce

1 in 5 U.S. exporters are located in Florida

\$153B International Trade

1.76M jobs supported by Trade, Transportation and Utilities industry sector

1.25M jobs supported by Leisure and Hospitality industry sector

131M annual visitors

CAPITAL **TALLAHASSEE**

AREA
(SQ. MILES) **53,624**

LARGEST
CITY (SIZE) **JACKSONVILLE**

POPULATION
(2019) **21,208,589**

ANNUAL POP
GROWTH RATE
(2010-2019) **1.4%**

EMPLOYMENT
(2019) **8,884,065**

ANNUAL EMP
GROWTH RATE
(2010-2019) **2.8%**

*Bureau of Economic Business Research,
Bureau of Labor Statistics*

DOMESTIC IMPORTS

1	GEORGIA	\$44B
2	CALIFORNIA	\$29B
3	TEXAS	\$26B
4	ALABAMA	\$18B
5	ILLINOIS	\$18B

DOMESTIC EXPORTS

1	GEORGIA	\$22B
2	TEXAS	\$19B
3	CALIFORNIA	\$15B
4	NORTH CAROLINA	\$12B
5	NEW YORK	\$10B

INTERNATIONAL IMPORTS

1	CHINA	\$9.5B
2	JAPAN	\$6.5B
3	BRAZIL	\$6.4B
4	MEXICO	\$4.5B
5	CHILE	\$3.7B

INTERNATIONAL EXPORTS

1	BRAZIL	\$13.4B
2	COLOMBIA	\$4.2B
3	ARGENTINA	\$3.6B
4	DOMINICAN REPUBLIC	\$3.1B
5	CHILE	\$3B

TRANSPORTATION STATISTICS AND FREIGHT MOVEMENT BY MODE



83%
TONNAGE

71%
VALUE

123,104 Public roadway mileage
12,130 State Highway System (SHS) mileage
30.7M Daily truck miles traveled on SHS
98 Public truck parking facilities



3.5%
TONNAGE

2.9%
VALUE

15 Deepwater seaports
4.1M Twenty-foot equivalent units (TEUs)
16.8M Annual cruise passengers



6.7%
TONNAGE

1.8%
VALUE

2,936 Miles of roads
6.9M Annual rail passenger traffic



0.1%
TONNAGE

5.4%
VALUE

129 Public use airports
20 Commercial service airports
2 Active spaceports



3.6%
TONNAGE

1%
VALUE

5,899 Miles of gas transmission and hazardous liquid pipelines



3.1%
TONNAGE

17.9%
VALUE

Includes shipments by multiple modes and by parcel delivery services, U.S. Postal Service, or couriers (capped at 150 pounds). This category is not limited to containerized or trailer-on-flatcar shipments.

FLORIDA COMMODITY FLOWS (2018-2045)



IMPORTS



WITHIN FL



EXPORTS

	2018	2045	2018	2045	2018	2045
TONNAGE	142M	190M	656M	761M	57M	103M
VALUE	\$321B	\$690B	\$402B	\$844B	\$180B	\$606B

Freight Analysis Framework (FAF) 4.5.1.



Rickey Fitzgerald
Manager, Freight & Multimodal Operations
 Florida Department of Transportation
 605 Suwannee Street, Tallahassee, FL 32399
 Rickey.Fitzgerald@dot.state.fl.us
 850.414.4702