

FREIGHT AND LOGISTICS OVERVIEW

FEBRUARY 2021

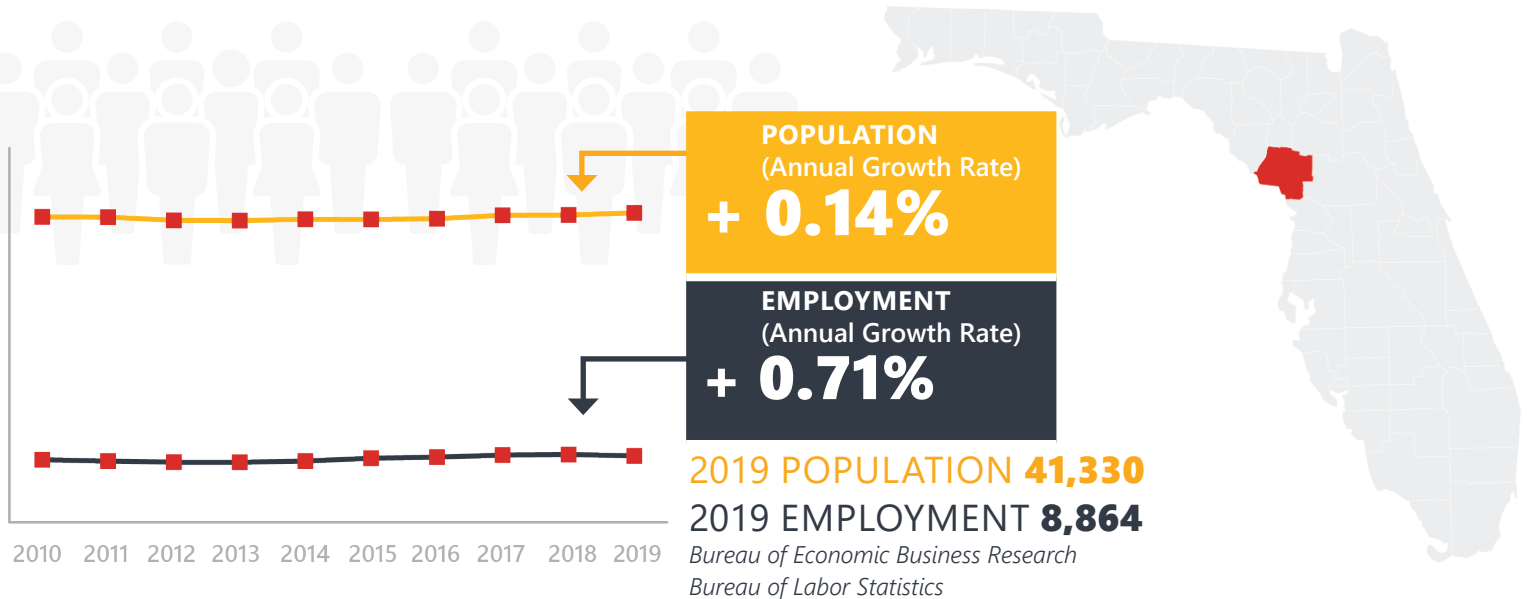
LEVY COUNTY



Mission: The department will provide a safe transportation system that ensures the mobility of people and goods, enhances economic prosperity, and preserves the quality of our environment and communities.

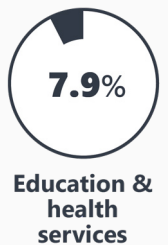
LEVY COUNTY HIGHLIGHTS

"NATURE COAST"		AREA (SQ . MILES)	1,413
COUNTY SEAT	BRONSON	LARGEST CITY (SIZE)	WILLISTON



LARGEST INDUSTRY SECTORS BY EMPLOYMENT (2019)

Office of Economic and Demographic Research



FASTEST GROWING INDUSTRIES (2010-2019)

MANUFACTURING	JOBS ADDED	387
CONSTRUCTION		344
LEISURE AND HOSPITALITY		199
PROFESSIONAL AND BUSINESS SERVICES		118
TRADE, TRANSPORTATION, AND UTILITIES		100

Bureau of Labor Statistics

DID YOU KNOW?

Cedar Key is one of the oldest harbors in the state and the location of Florida's first railroad depot.

Budget Travel magazine named Cedar Key as Florida's #1 small town (and #8 in America).

Levy County is the #1 producer of farm raised clams in the United States.

COMMODITY FLOW HIGHLIGHTS



IMPORTS

WITHIN COUNTY

EXPORTS

2018

2045

2018

2045

2018

2045

Tonnage:	1.25 M	771.14 K	156.71 K	54.87 K	2.51 M	2.23 M
Value:	\$ 303.36 M	\$ 261.83 M	\$ 20.51 M	\$ 1.88 M	\$ 264.22 M	\$ 307.46 M



TOP COMMODITY by Tonnage, 2018



Nonmetallic Minerals	799,840
Clay, Concrete, Glass, Stone	216,856
Petroleum or Coal Products	104,111
Warehouse, Distribution Center and Drayage Movements	60,230
Lumber or Wood Products	25,079

Nonmetallic Minerals	2,194,290
Lumber or Wood Products	143,533
Farm Products	113,324
Waste or Scrap Materials	38,285
Transportation Equipment	9,685



TOP COMMODITY by Value, 2018

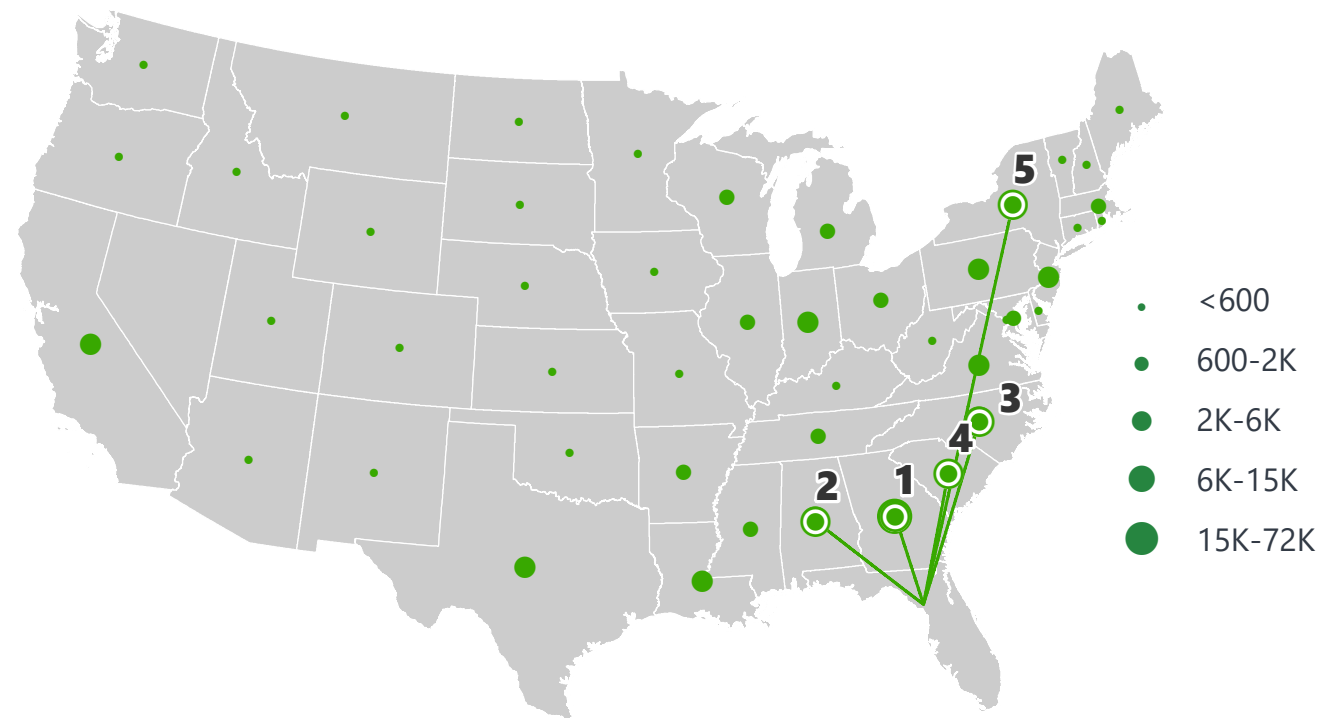


Transportation Equipment	\$ 100,592,235
Warehouse, Distribution Center and Drayage Movements	\$ 79,233,686
Petroleum or Coal Products	\$ 47,319,713
Clay, Concrete, Glass, Stone	\$ 23,639,407
Nonmetallic Minerals	\$ 8,798,881

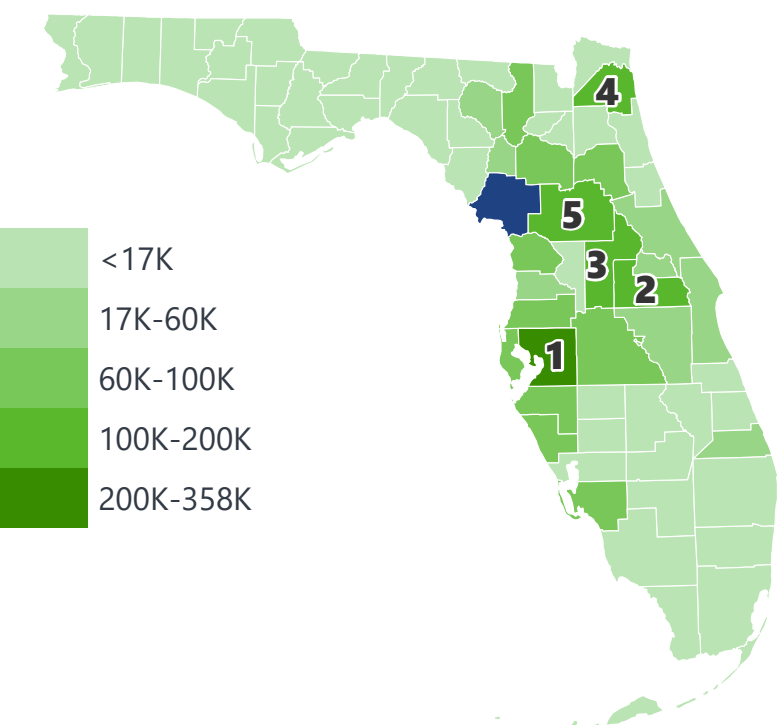
Farm Products	\$ 96,368,693
Transportation Equipment	\$ 63,808,021
Lumber or Wood Products	\$ 25,129,057
Nonmetallic Minerals	\$ 23,676,397
Marine Products	\$ 19,744,142

LEVY COUNTY EXPORTS AND IMPORTS

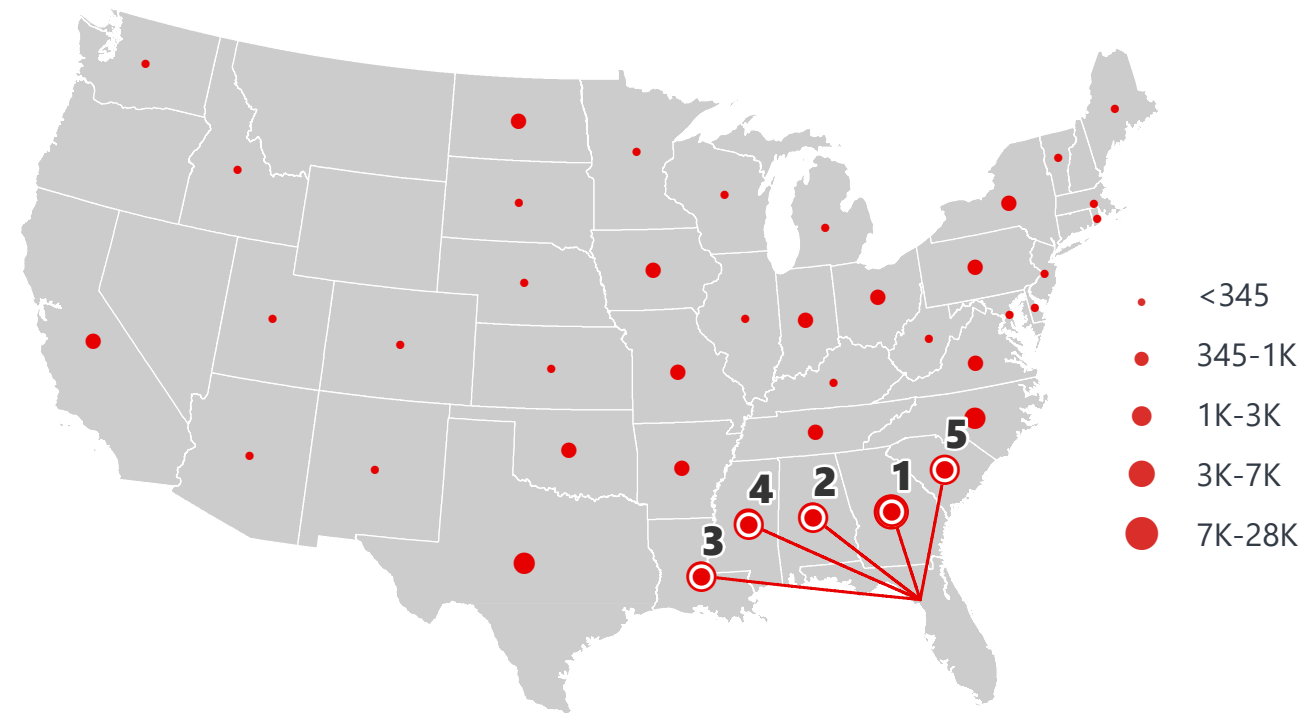
DOMESTIC EXPORTS (TONS)



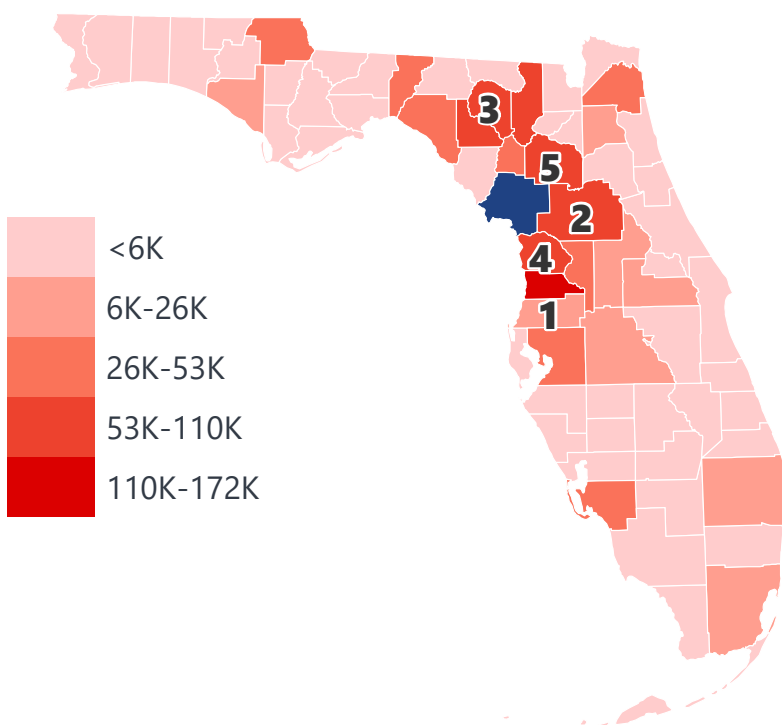
INTRASTATE EXPORTS (TONS)



DOMESTIC IMPORTS (TONS)



INTRASTATE IMPORTS (TONS)



DOMESTIC EXPORTS (TONNAGE)

1	Georgia	71,698
2	Alabama	14,558
3	North Carolina	9,805
4	South Carolina	5,846
5	New York	5,163

INTRASTATE EXPORTS (TONNAGE)

1	Hillsborough	357,144
2	Orange	199,232
3	Lake	138,043
4	Duval	134,200
5	Marion	126,449

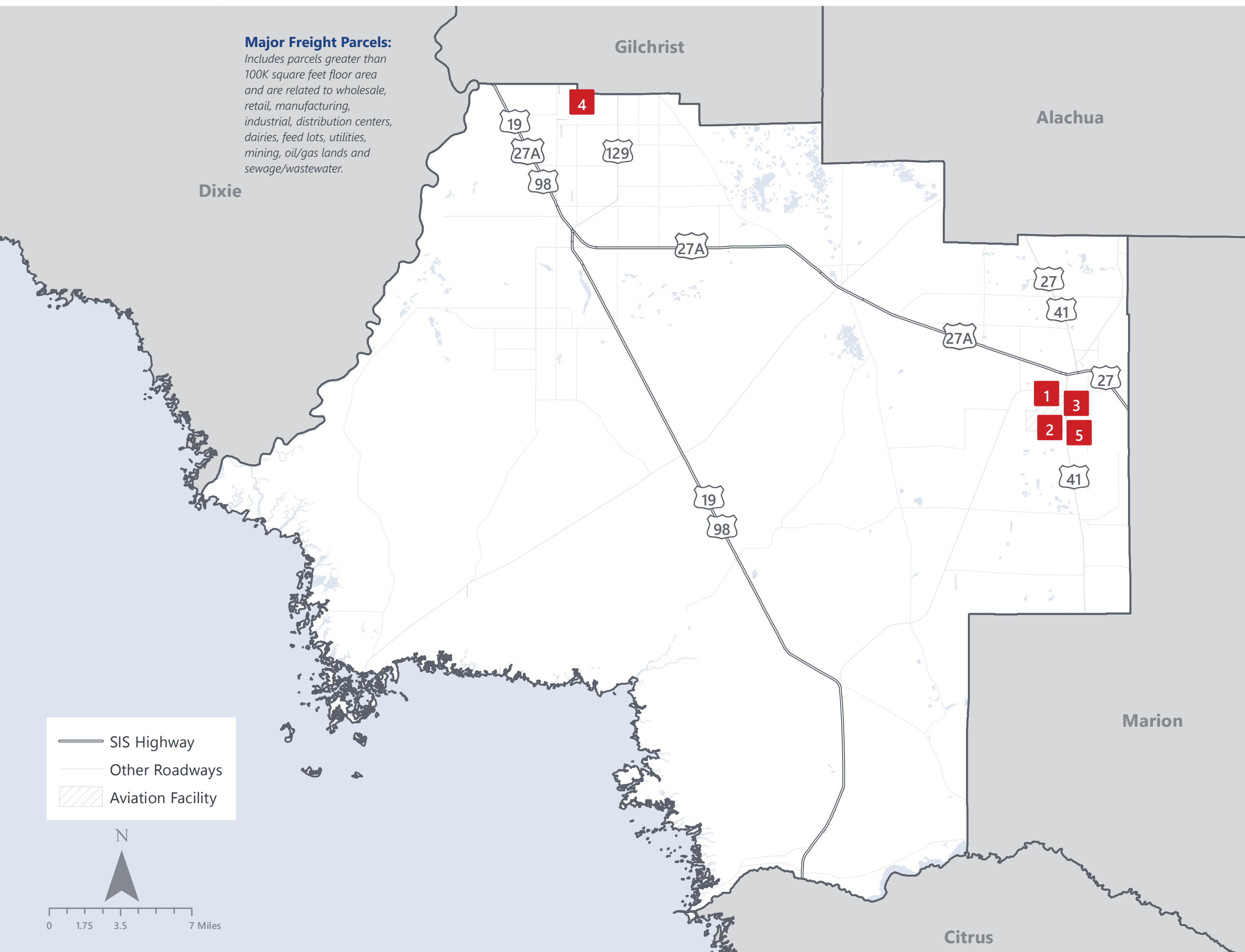
DOMESTIC IMPORTS (TONNAGE)

1	Georgia	27,203
2	Alabama	7,326
3	Louisiana	6,500
4	Mississippi	5,312
5	South Carolina	2,950

INTRASTATE IMPORTS (TONNAGE)

1	Hernando	171,304
2	Marion	110,502
3	Suwannee	101,030
4	Citrus	93,517
5	Alachua	81,398

LEVY COUNTY FREIGHT INFRASTRUCTURE



LARGEST FREIGHT EMPLOYERS

1	Monterey Boats	400-500
2	Shadow Trailers	100-200
3	Ancorp	50-100
4	Alliance Grazing	50-100
5	Tidewater Trucking	50-100

MAJOR FREIGHT LAND USES

0.8 M SQ.FT Floor Area

62.67%	Warehousing and distribution centers
20.22%	Light manufacturing
6.44%	Utilities
5.57%	Fruit, vegetable and meat packing plants
1.76%	Open storage

47.6 M SQ.FT LAND AREA

41.97%	Utilities
20.57%	Minerals processing and construction material plants
17.82%	Warehousing and distribution centers
6.00%	Light manufacturing
3.62%	Canneries, bottlers and brewers, distilleries, wineries

Florida Department of Economic Opportunity, 2018
Florida Department of Revenue, 2019

MAJOR COUNTY COMMODITIES



IMPORTS



TOP COMMODITY by Tonnage, 2018 (relative to Florida)

FL Rank	Commodity	% Florida Share
27	Nonmetallic Minerals	0.67%
36	Clay, Concrete, Glass, Stone	0.52%
33	Transportation Equipment	0.26%
44	Forest Products	0.23%
49	Lumber or Wood Products	0.19%

EXPORTS



FL Rank	Commodity	% Florida Share
15	Nonmetallic Minerals	2.13%
17	Lumber or Wood Products	1.54%
12	Marine Products	0.97%
27	Farm Products	0.81%
31	Forest Products	0.69%

TOP COMMODITY by Value, 2018 (relative to Florida)

FL Rank	Commodity	% Florida Share
29	Nonmetallic Minerals	0.48%
38	Clay, Concrete, Glass, Stone	0.32%
44	Forest Products	0.20%
37	Transportation Equipment	0.14%
46	Petroleum or Coal Products	0.11%

FL Rank	Commodity	% Florida Share
17	Nonmetallic Minerals	1.56%
11	Marine Products	1.23%
22	Farm Products	1.08%
31	Forest Products	0.63%
42	Lumber or Wood Products	0.50%



TRANSPORTATION STATISTICS AND FREIGHT MOVEMENT BY MODE



85 K | Daily Truck Miles Traveled
- Planning Time Index
1,340 | Public Roadway Mileage



115 Miles | Distance from closest seaport (JAXPORT)



- Class I Mainline Miles
- Class II Mainline Miles
19.36 | Class III Mainline Miles (FNOR)



45 Miles | Distance from closest airport (Gainesville Regional Airport)

FLORIDA HIGHLIGHTS

3rd most populous US State

\$1T Gross Domestic Product

4th Largest US Economy and **17th Largest** Economy in World

Nation's **3rd largest** workforce

1 in 5 U.S. exporters are located in Florida

\$153B International Trade

1.76M jobs supported by Trade, Transportation and Utilities industry sector

1.25M jobs supported by Leisure and Hospitality industry sector

131M annual visitors

CAPITAL **TALLAHASSEE**

AREA
(SQ. MILES) **53,624**

LARGEST
CITY (SIZE) **JACKSONVILLE**

POPULATION
(2019) **21,208,589**

ANNUAL POP
GROWTH RATE
(2010-2019) **1.4%**

EMPLOYMENT
(2019) **8,884,065**

ANNUAL EMP
GROWTH RATE
(2010-2019) **2.8%**

*Bureau of Economic Business Research,
Bureau of Labor Statistics*

DOMESTIC IMPORTS

1	GEORGIA	\$44B
2	CALIFORNIA	\$29B
3	TEXAS	\$26B
4	ALABAMA	\$18B
5	ILLINOIS	\$18B

DOMESTIC EXPORTS

1	GEORGIA	\$22B
2	TEXAS	\$19B
3	CALIFORNIA	\$15B
4	NORTH CAROLINA	\$12B
5	NEW YORK	\$10B

INTERNATIONAL IMPORTS

1	CHINA	\$9.5B
2	JAPAN	\$6.5B
3	BRAZIL	\$6.4B
4	MEXICO	\$4.5B
5	CHILE	\$3.7B

INTERNATIONAL EXPORTS

1	BRAZIL	\$13.4B
2	COLOMBIA	\$4.2B
3	ARGENTINA	\$3.6B
4	DOMINICAN REPUBLIC	\$3.1B
5	CHILE	\$3B

TRANSPORTATION STATISTICS AND FREIGHT MOVEMENT BY MODE



83%
TONNAGE

71%
VALUE

123,104 Public roadway mileage
12,130 State Highway System (SHS) mileage
30.7M Daily truck miles traveled on SHS
98 Public truck parking facilities



3.5%
TONNAGE

2.9%
VALUE

15 Deepwater seaports
4.1M Twenty-foot equivalent units (TEUs)
16.8M Annual cruise passengers



6.7%
TONNAGE

1.8%
VALUE

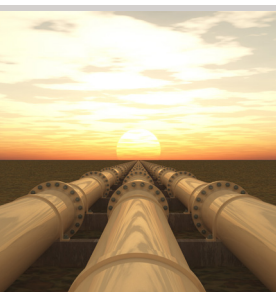
2,936 Miles of roads
6.9M Annual rail passenger traffic



0.1%
TONNAGE

5.4%
VALUE

129 Public use airports
20 Commercial service airports
2 Active spaceports



3.6%
TONNAGE

1%
VALUE

5,899 Miles of gas transmission and hazardous liquid pipelines



3.1%
TONNAGE

17.9%
VALUE

Includes shipments by multiple modes and by parcel delivery services, U.S. Postal Service, or couriers (capped at 150 pounds). This category is not limited to containerized or trailer-on-flatcar shipments.

FLORIDA COMMODITY FLOWS (2018-2045)



IMPORTS



WITHIN FL



EXPORTS

	2018	2045	2018	2045	2018	2045
TONNAGE	142M	190M	656M	761M	57M	103M
VALUE	\$321B	\$690B	\$402B	\$844B	\$180B	\$606B

Freight Analysis Framework (FAF) 4.5.1.



Rickey Fitzgerald
Manager, Freight & Multimodal Operations
 Florida Department of Transportation
 605 Suwannee Street, Tallahassee, FL 32399
 Rickey.Fitzgerald@dot.state.fl.us
 850.414.4702