

# FREIGHT AND LOGISTICS OVERVIEW

FEBRUARY 2021

# LEON COUNTY



*Mission: The department will provide a safe transportation system that ensures the mobility of people and goods, enhances economic prosperity, and preserves the quality of our environment and communities.*

# LEON COUNTY HIGHLIGHTS

**"CITY OF THE SEVEN HILLS"**

AREA (SQ . MILES)

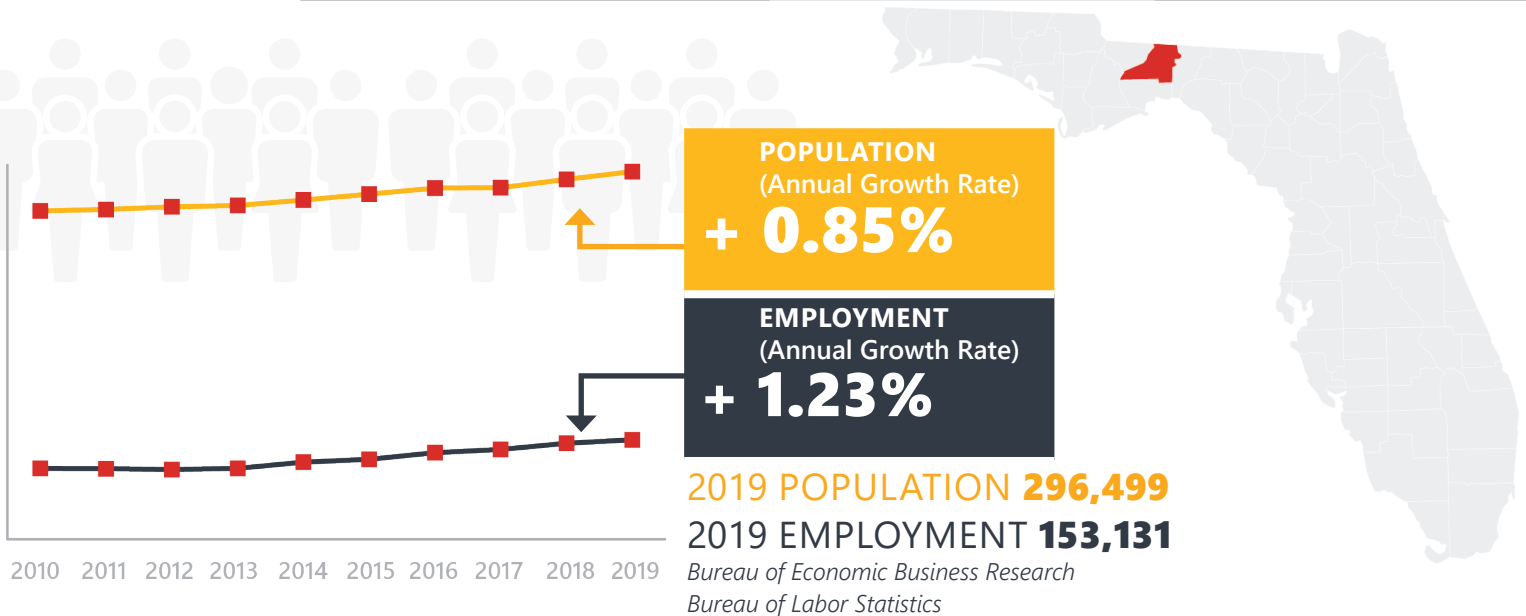
**702**

COUNTY SEAT

**TALLAHASSEE**

LARGEST CITY (SIZE)

**TALLAHASSEE**



## LARGEST INDUSTRY SECTORS BY EMPLOYMENT (2019)

*Office of Economic and Demographic Research*



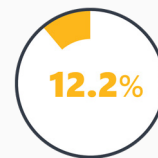
Education & health services



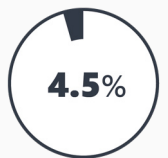
Trade, transportation & utilities



Leisure & hospitality



Professional & business services



Financial activities

## FASTEST GROWING INDUSTRIES (2010-2019)

EDUCATION AND HEALTH SERVICES	JOBS ADDED	4,769
LEISURE AND HOSPITALITY		4,720
PROFESSIONAL AND BUSINESS SERVICES		2,802
CONSTRUCTION		1,913
TRADE, TRANSPORTATION, AND UTILITIES		1,618

*Bureau of Labor Statistics*

## DID YOU KNOW?

Leon County is home to Florida's state capital, Tallahassee.

Tallahassee has Florida's most educated population. About half the residents have a bachelor's degree or higher.

The county is home to the National High Magnetic Field Laboratory which is the largest and highest-powered magnet lab in the world.



# COMMODITY FLOW HIGHLIGHTS



## IMPORTS

## WITHIN COUNTY

## EXPORTS

	2018	2045	2018	2045	2018	2045
Tonnage:	3.42 M	5.27 M	42.35 K	81.39 K	1.1 M	1.73 M
Value:	\$ 8.72 B	\$ 6.84 B	\$ 150.39 M	\$ 201.69 M	\$ 1.63 B	\$ 2.71 B



### TOP COMMODITY by Tonnage, 2018



Petroleum or Coal Products	787,362
Nonmetallic Minerals	727,883
Warehouse, Distribution Center and Drayage Movements	535,493
Food or Kindred Products	400,858
Clay, Concrete, Glass, Stone	346,252

Warehouse, Distribution Center and Drayage Movements	509,348
Waste or Scrap Materials	377,045
Clay, Concrete, Glass, Stone	88,137
Lumber or Wood Products	57,417
Farm Products	13,330



### TOP COMMODITY by Value, 2018

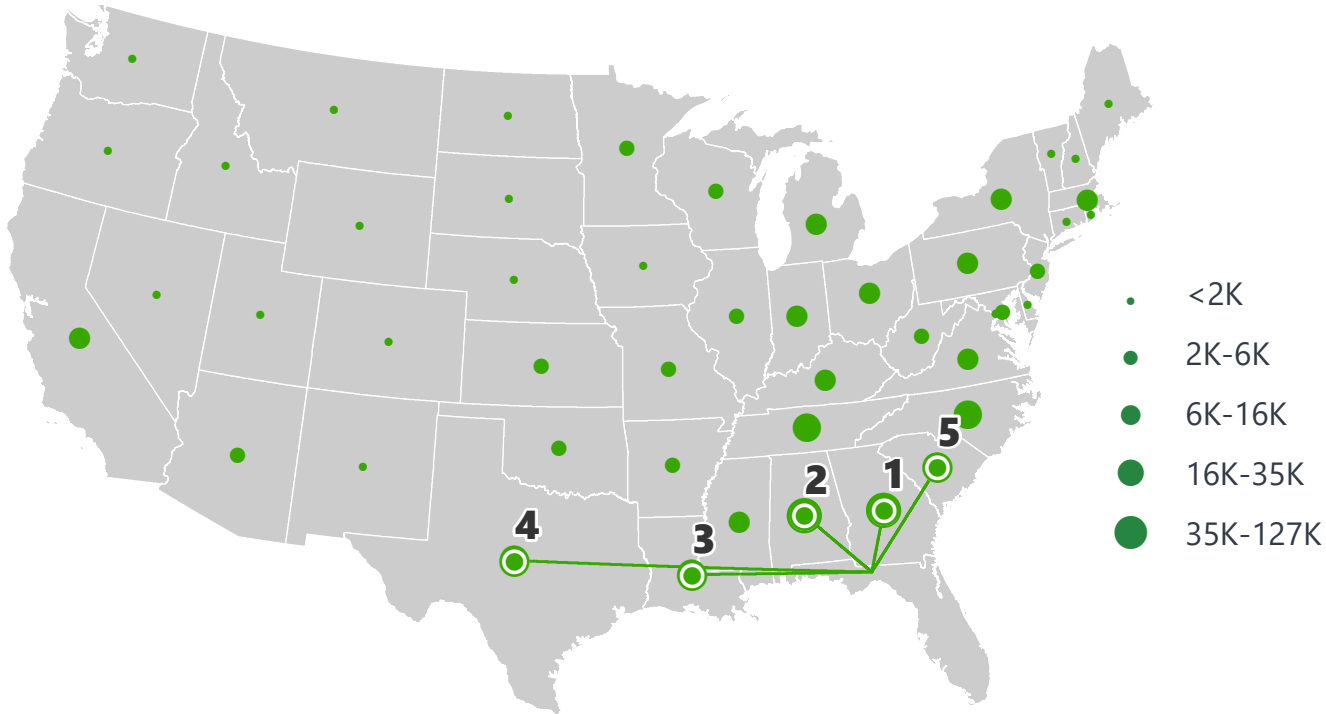


Misc. Freight Shipments	\$ 4,252,845,216
Warehouse, Distribution Center and Drayage Movements	\$ 719,615,446
Transportation Equipment	\$ 637,160,027
Food or Kindred Products	\$ 605,658,414
Petroleum or Coal Products	\$ 434,860,541

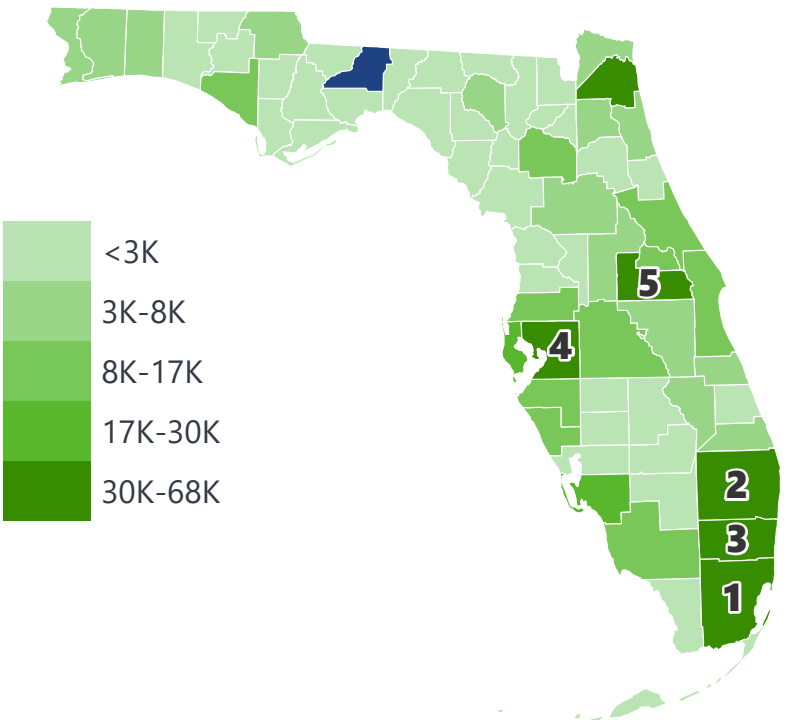
Warehouse, Distribution Center and Drayage Movements	\$ 656,119,061
Misc. Manufacturing Products	\$ 264,177,636
Instruments, Photo and Optical Equipment	\$ 166,213,858
Waste or Scrap Materials	\$ 102,182,820
Machinery	\$ 101,874,668

# LEON COUNTY EXPORTS AND IMPORTS

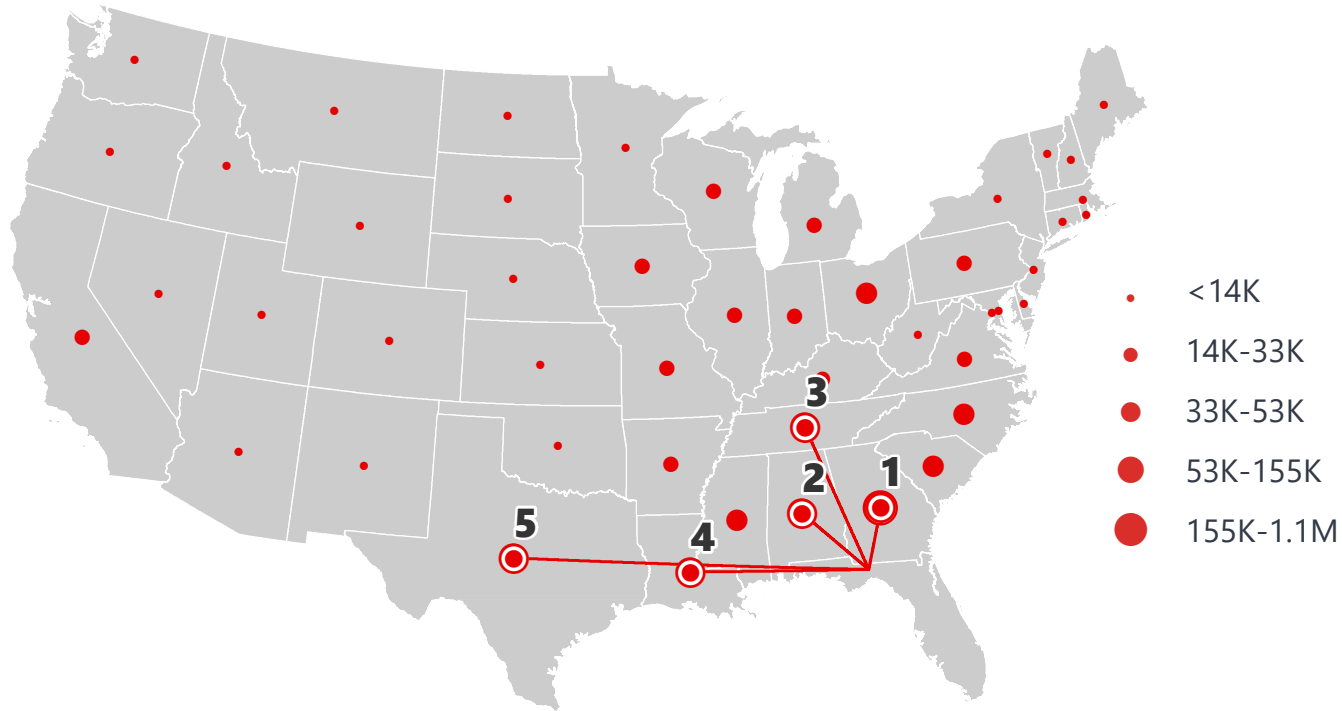
DOMESTIC EXPORTS (TONS)



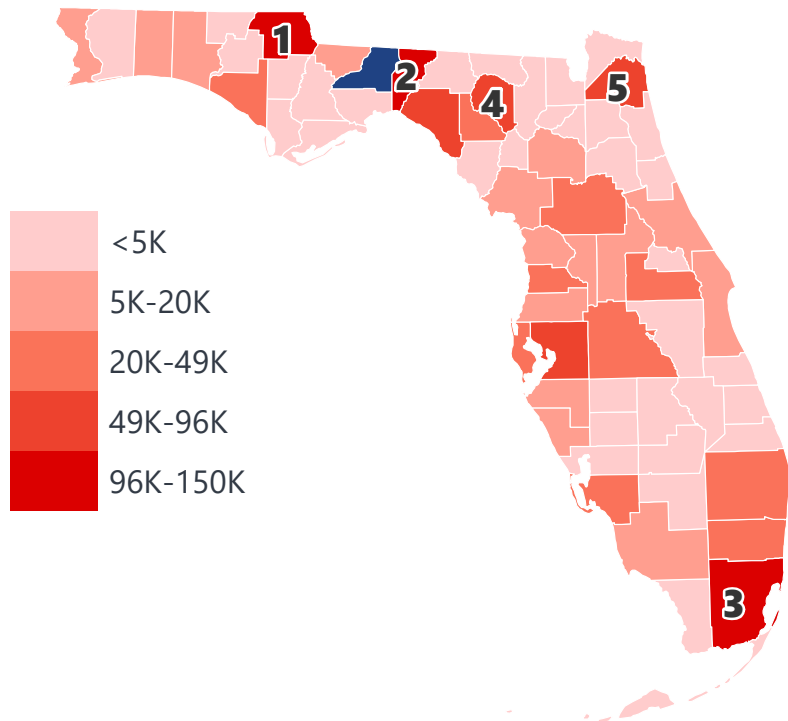
INTRASTATE EXPORTS (TONS)



DOMESTIC IMPORTS (TONS)



INTRASTATE IMPORTS (TONS)



## DOMESTIC EXPORTS (TONNAGE)

1	Georgia	126,188
2	Alabama	80,782
3	Louisiana	34,693
4	Texas	30,223
5	South Carolina	19,870

## INTRASTATE EXPORTS (TONNAGE)

1	Miami-Dade	67,594
2	Palm Beach	55,320
3	Broward	49,996
4	Hillsborough	44,450
5	Orange	42,596

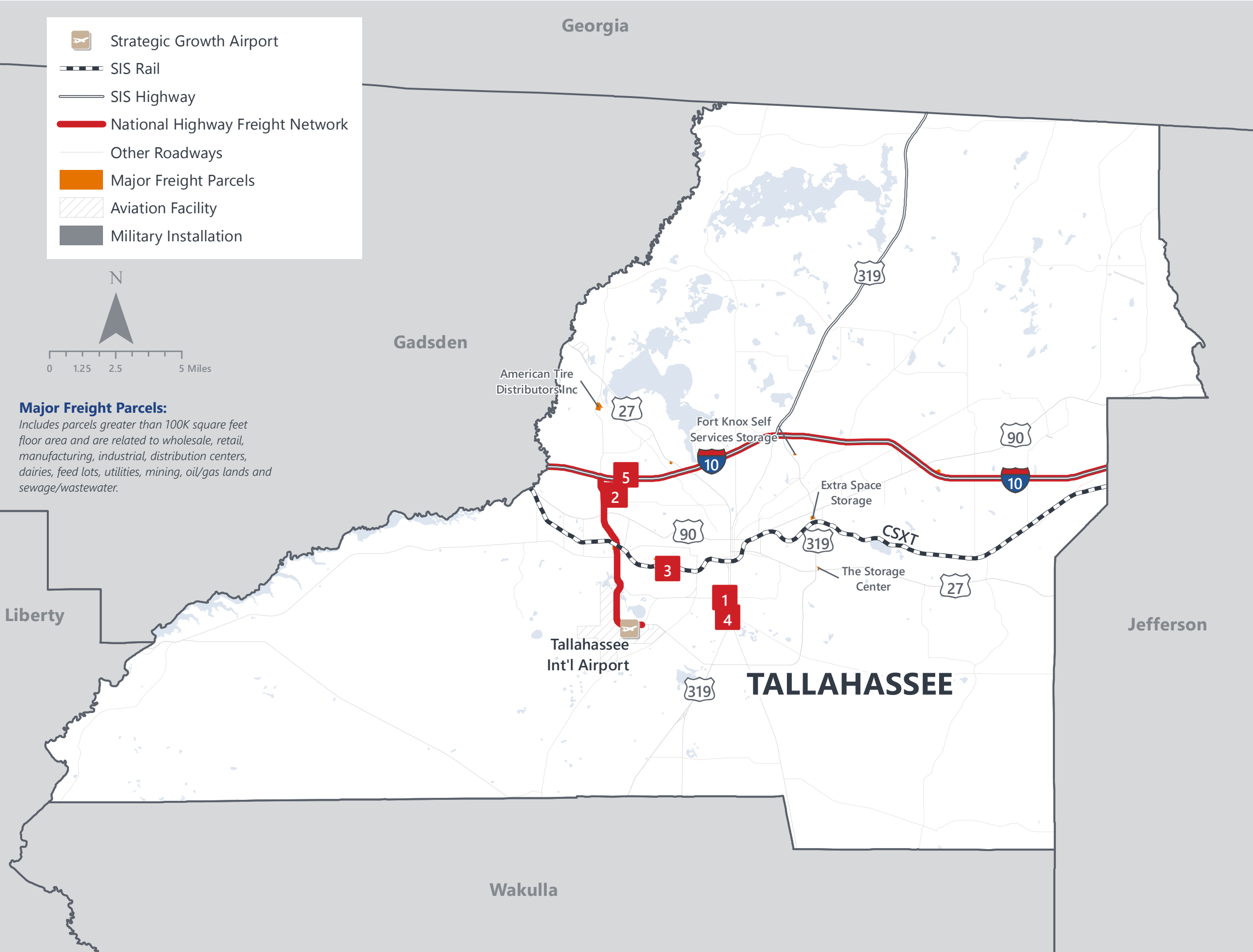
## DOMESTIC IMPORTS (TONNAGE)

1	Georgia	1,090,453
2	Alabama	154,940
3	Tennessee	95,511
4	Louisiana	95,230
5	Texas	89,446

## INTRASTATE IMPORTS (TONNAGE)

1	Jackson	149,677
2	Jefferson	146,681
3	Miami-Dade	138,816
4	Suwannee	96,150
5	Duval	93,901

# LEON COUNTY FREIGHT INFRASTRUCTURE



## LARGEST FREIGHT EMPLOYERS

1	USPS	200-300
2	UPS	200-300
3	Danfoss Turbocor Compressors	100-200
4	Syn Tech Systems	100-200
5	Coca-Cola Company	100-200

## MAJOR FREIGHT LAND USES

### 11 M SQ.FT Floor Area

89.52%	Warehousing and distribution centers
9.62%	Light manufacturing
0.65%	Utilities
0.12%	Sewage disposal and waste land
0.09%	Airports, bus terminals and marine terminals

### 162.2 M SQ.FT LAND AREA

44.87%	Warehousing and distribution centers
33.87%	Sewage disposal and waste land
11.96%	Utilities
4.20%	Mining lands, petroleum lands, or gas lands
3.67%	Light manufacturing

Florida Department of Economic Opportunity, 2018  
Florida Department of Revenue, 2019



# MAJOR COUNTY COMMODITIES



## IMPORTS



### TOP COMMODITY by Tonnage, 2018 (relative to Florida)

FL Rank	Commodity	% Florida Share
2	Misc. Freight Shipments	26.96%
9	Printed Matter	3.46%
17	Rubber or Misc. Plastics	1.59%
17	Food or Kindred Products	1.56%
9	Small Packaged Freight Shipments	1.55%

## EXPORTS



FL Rank	Commodity	% Florida Share
8	Small Packaged Freight Shipments	1.61%
16	Warehouse, Distribution Center and Drayage movements	1.45%
17	Waste or Scrap Materials	1.42%
14	Printed Matter	1.10%
19	Machinery	0.81%

### TOP COMMODITY by Value, 2018 (relative to Florida)

FL Rank	Commodity	% Florida Share
1	Misc. Freight Shipments	85.31%
9	Printed Matter	3.36%
16	Food or Kindred Products	1.60%
17	Rubber or Misc. Plastics	1.54%
14	Chemicals or Allied Products	1.39%

FL Rank	Commodity	% Florida Share
11	Instruments, Photo and Optical Equipment	1.55%
7	Misc. Manufacturing Products	1.55%
17	Waste or Scrap Materials	1.53%
14	Printed Matter	1.05%
15	Machinery	0.96%





# TRANSPORTATION STATISTICS AND FREIGHT MOVEMENT BY MODE



**334 K** | Daily Truck Miles Traveled  
**1.17** | Planning Time Index  
**1,656** | Public Roadway Mileage



**110 Miles** | Distance from closest seaport  
(Port of Panama City)



**34.69** | Class I Mainline Miles (CSX)  
- Class II Mainline Miles  
- Class III Mainline Miles



**1 Major Airport** | Tallahassee International Airport

# FLORIDA HIGHLIGHTS

**3rd most populous** US State

**\$1T Gross** Domestic Product

**4th Largest** US Economy and **17th Largest** Economy in World

Nation's **3rd largest** workforce

**1 in 5 U.S. exporters** are located in Florida

**\$153B** International Trade

**1.76M jobs supported** by Trade, Transportation and Utilities industry sector

**1.25M jobs supported** by Leisure and Hospitality industry sector

**131M** annual visitors

CAPITAL **TALLAHASSEE**

AREA (SQ. MILES) **53,624**

LARGEST CITY (SIZE) **JACKSONVILLE**

POPULATION (2019) **21,208,589**

ANNUAL POP GROWTH RATE (2010-2019) **1.4%**

EMPLOYMENT (2019) **8,884,065**

ANNUAL EMP GROWTH RATE (2010-2019) **2.8%**

*Bureau of Economic Business Research,  
Bureau of Labor Statistics*

## DOMESTIC IMPORTS

<b>1</b>	<b>GEORGIA</b>	\$44B
<b>2</b>	<b>CALIFORNIA</b>	\$29B
<b>3</b>	<b>TEXAS</b>	\$26B
<b>4</b>	<b>ALABAMA</b>	\$18B
<b>5</b>	<b>ILLINOIS</b>	\$18B

## DOMESTIC EXPORTS

<b>1</b>	<b>GEORGIA</b>	\$22B
<b>2</b>	<b>TEXAS</b>	\$19B
<b>3</b>	<b>CALIFORNIA</b>	\$15B
<b>4</b>	<b>NORTH CAROLINA</b>	\$12B
<b>5</b>	<b>NEW YORK</b>	\$10B

## INTERNATIONAL IMPORTS

<b>1</b>	<b>CHINA</b>	\$9.5B
<b>2</b>	<b>JAPAN</b>	\$6.5B
<b>3</b>	<b>BRAZIL</b>	\$6.4B
<b>4</b>	<b>MEXICO</b>	\$4.5B
<b>5</b>	<b>CHILE</b>	\$3.7B

## INTERNATIONAL EXPORTS

<b>1</b>	<b>BRAZIL</b>	\$13.4B
<b>2</b>	<b>COLOMBIA</b>	\$4.2B
<b>3</b>	<b>ARGENTINA</b>	\$3.6B
<b>4</b>	<b>DOMINICAN REPUBLIC</b>	\$3.1B
<b>5</b>	<b>CHILE</b>	\$3B



# TRANSPORTATION STATISTICS AND FREIGHT MOVEMENT BY MODE



**83%**  
TONNAGE

**71%**  
VALUE

**123,104** Public roadway mileage  
**12,130** State Highway System (SHS) mileage  
**30.7M** Daily truck miles traveled on SHS  
**98** Public truck parking facilities



**3.5%**  
TONNAGE

**2.9%**  
VALUE

**15** Deepwater seaports  
**4.1M** Twenty-foot equivalent units (TEUs)  
**16.8M** Annual cruise passengers



**6.7%**  
TONNAGE

**1.8%**  
VALUE

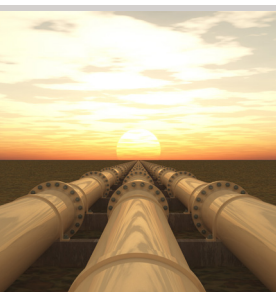
**2,936** Miles of roads  
**6.9M** Annual rail passenger traffic



**0.1%**  
TONNAGE

**5.4%**  
VALUE

**129** Public use airports  
**20** Commercial service airports  
**2** Active spaceports



**3.6%**  
TONNAGE

**1%**  
VALUE

**5,899** Miles of gas transmission and hazardous liquid pipelines



**3.1%**  
TONNAGE

**17.9%**  
VALUE

Includes shipments by multiple modes and by parcel delivery services, U.S. Postal Service, or couriers (capped at 150 pounds). This category is not limited to containerized or trailer-on-flatcar shipments.

# FLORIDA COMMODITY FLOWS (2018-2045)



IMPORTS



WITHIN FL



EXPORTS

	2018	2045	2018	2045	2018	2045
TONNAGE	142M	190M	656M	761M	57M	103M
VALUE	\$321B	\$690B	\$402B	\$844B	\$180B	\$606B

Freight Analysis Framework (FAF) 4.5.1.



**Rickey Fitzgerald**  
**Manager, Freight & Multimodal Operations**  
 Florida Department of Transportation  
 605 Suwannee Street, Tallahassee, FL 32399  
 Rickey.Fitzgerald@dot.state.fl.us  
 850.414.4702