

FREIGHT AND LOGISTICS OVERVIEW

FEBRUARY 2021

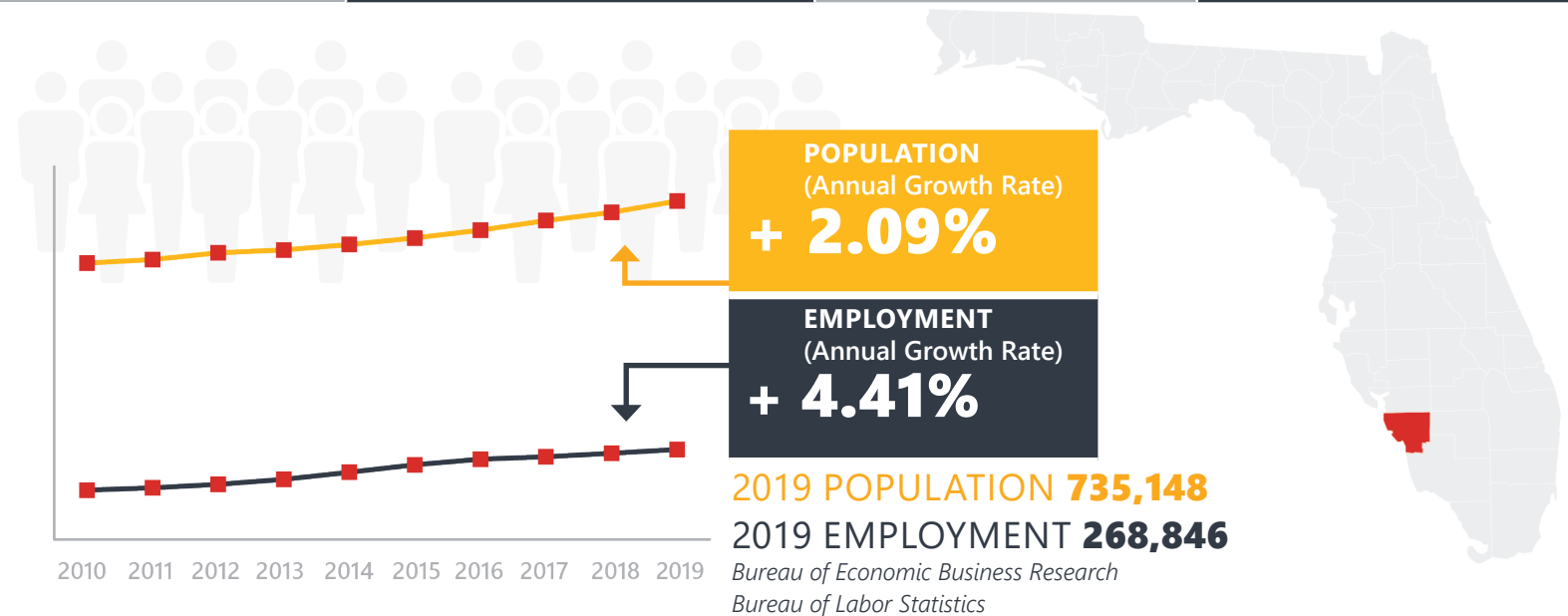
LEE COUNTY



Mission: The department will provide a safe transportation system that ensures the mobility of people and goods, enhances economic prosperity, and preserves the quality of our environment and communities.

LEE COUNTY HIGHLIGHTS

"CITY OF PALMS"		AREA (SQ . MILES)	1,212
COUNTY SEAT	FORT MYERS	LARGEST CITY (SIZE)	CAPE CORAL



LARGEST INDUSTRY SECTORS BY EMPLOYMENT (2019)

Office of Economic and Demographic Research



FASTEST GROWING INDUSTRIES (2010-2019)

CONSTRUCTION	JOBS ADDED	16,047
LEISURE AND HOSPITALITY		14,237
TRADE, TRANSPORTATION, AND UTILITIES		12,466
PROFESSIONAL AND BUSINESS SERVICES		12,031
EDUCATION AND HEALTH SERVICES		7,832

Bureau of Labor Statistics

DID YOU KNOW?

Southwest Florida International airport is a designated Foreign Trade Zone.

Alico is headquartered in Ft. Myers along with the Florida headquarters of King Ranch.

A significant portion (34%) of Lee County is comprised of water.

COMMODITY FLOW HIGHLIGHTS



IMPORTS

WITHIN COUNTY

EXPORTS

2018

2045

2018

2045

2018

2045

Tonnage:	9.55 M	13.39 M	6.06 M	10.25 M	15.96 M	25.69 M
Value:	\$ 10.59 B	\$ 17.69 B	\$ 0.74 B	\$ 1.38 B	\$ 3.22 B	\$ 4.89 B



TOP COMMODITY by Tonnage, 2018



Nonmetallic Minerals	2,840,527
Petroleum or Coal Products	1,643,942
Warehouse, Distribution Center and Drayage Movements	1,405,256
Clay, Concrete, Glass, Stone	1,296,787
Food or Kindred Products	780,267

Nonmetallic Minerals	11,134,752
Clay, Concrete, Glass, Stone	1,420,849
Petroleum or Coal Products	1,280,357
Waste or Scrap Materials	1,045,293
Warehouse, Distribution Center and Drayage Movements	643,498



TOP COMMODITY by Value, 2018

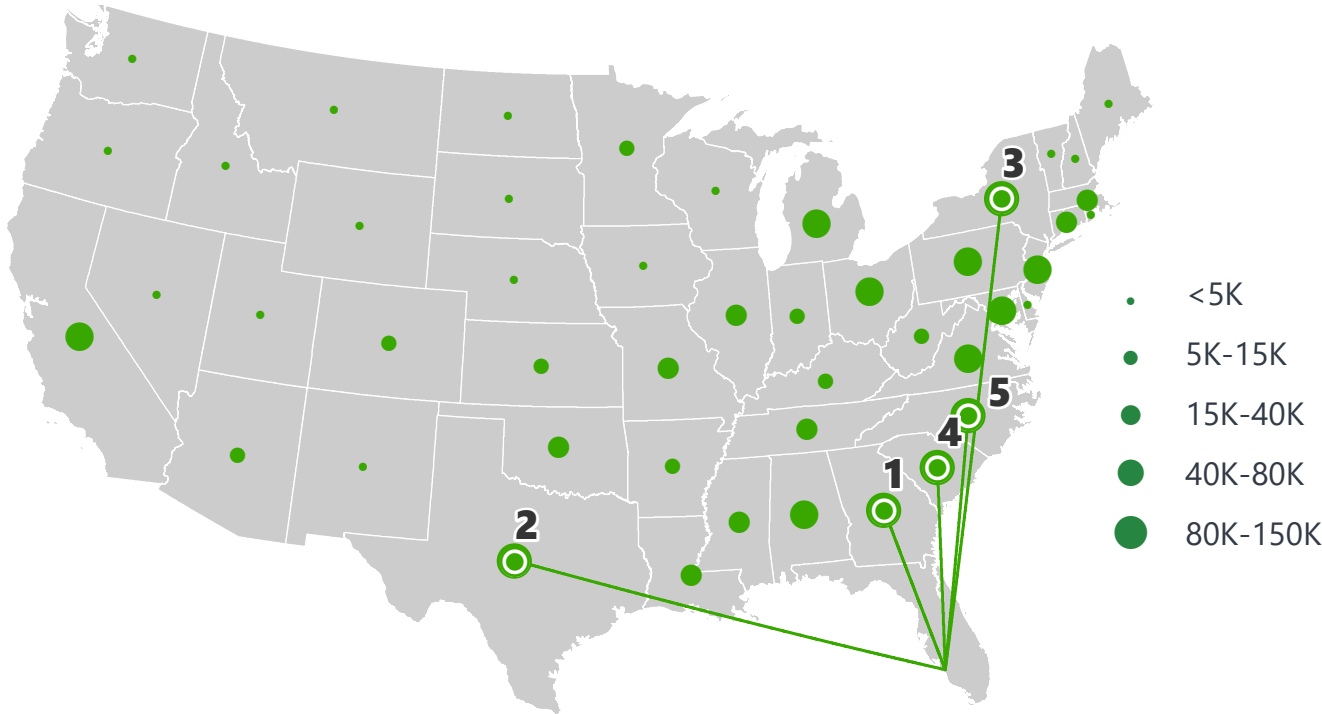


Warehouse, Distribution Center and Drayage Movements	\$ 1,914,395,444
Transportation Equipment	\$ 1,536,703,198
Food or Kindred Products	\$ 1,128,702,279
Petroleum or Coal Products	\$ 895,919,973
Chemicals or Allied Products	\$ 745,853,926

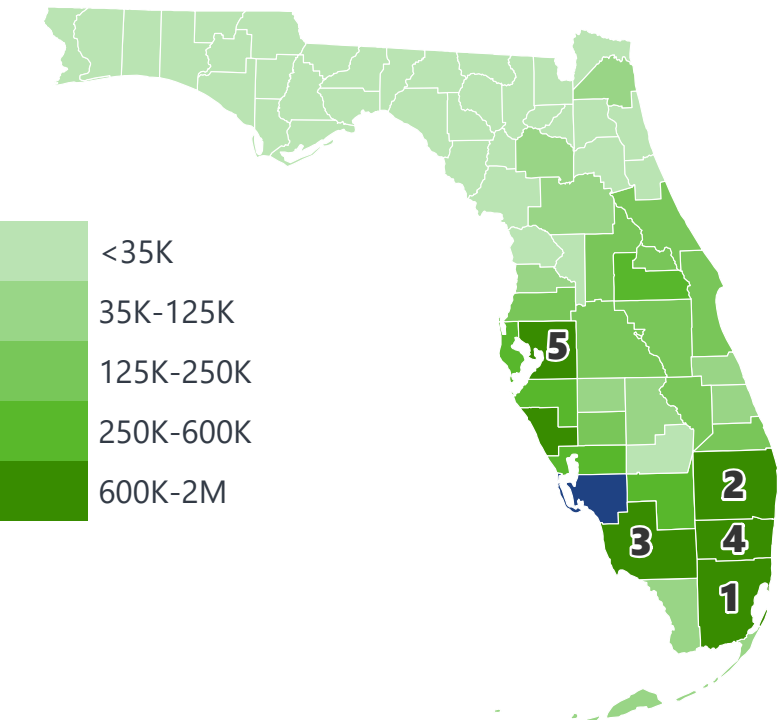
Warehouse, Distribution Center and Drayage Movements	\$ 808,804,687
Instruments, Photo and Optical Equipment	\$ 332,692,683
Misc. Manufacturing Products	\$ 308,203,416
Waste or Scrap Materials	\$ 266,209,511
Clay, Concrete, Glass, Stone	\$ 234,500,433

LEE COUNTY EXPORTS AND IMPORTS

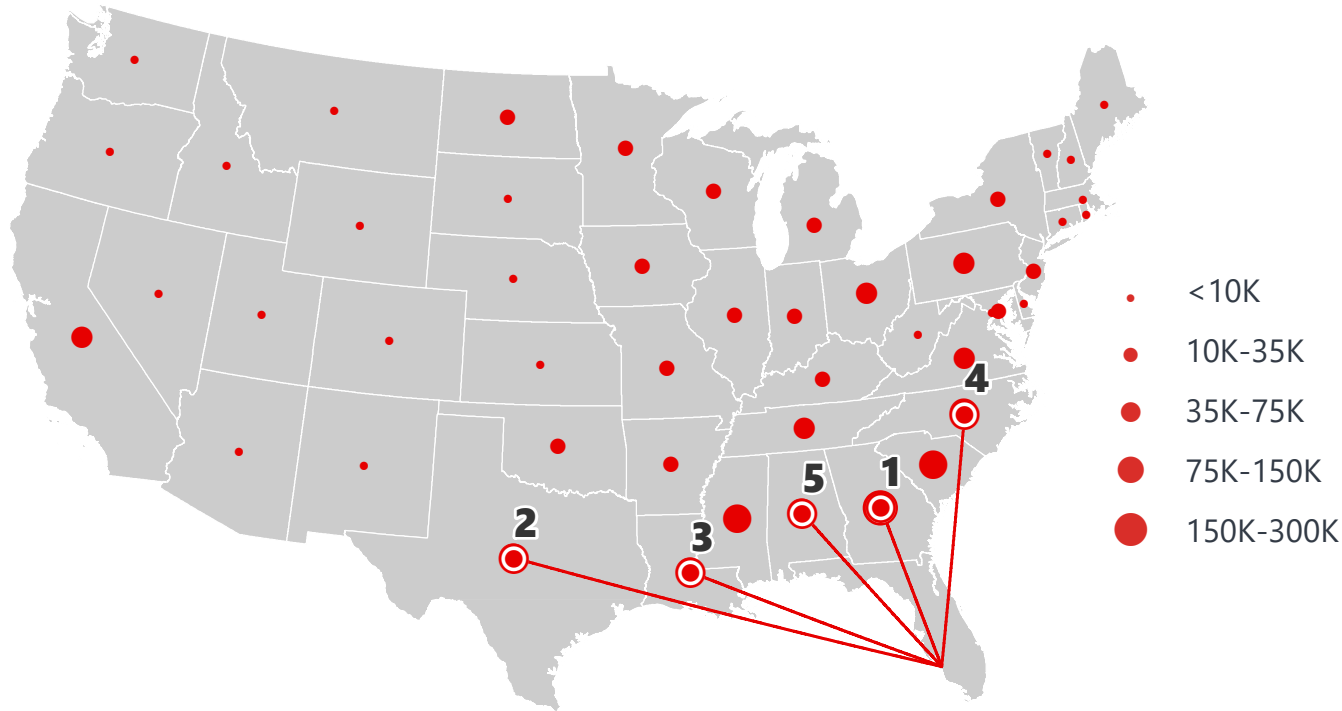
DOMESTIC EXPORTS (TONS)



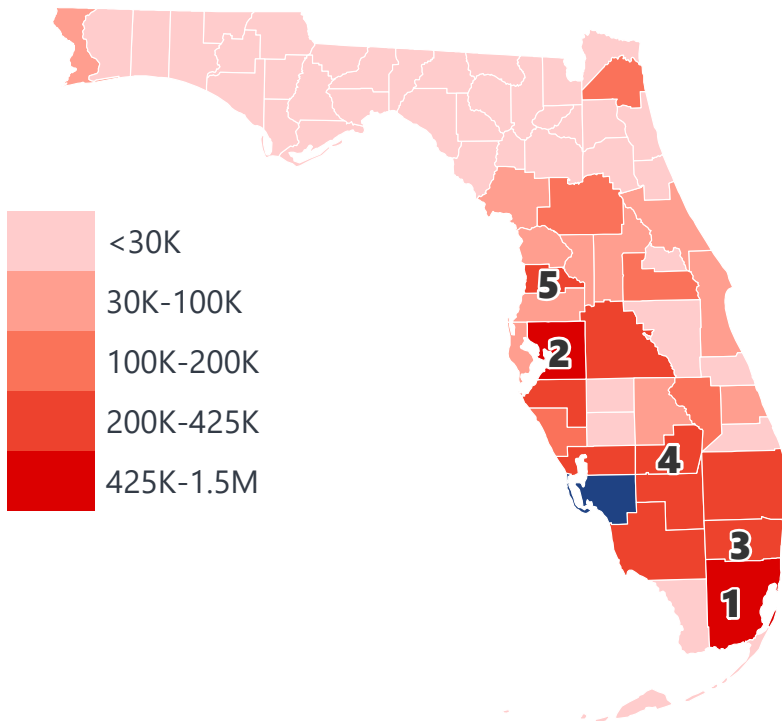
INTRASTATE EXPORTS (TONS)



DOMESTIC IMPORTS (TONS)



INTRASTATE IMPORTS (TONS)



DOMESTIC EXPORTS (TONNAGE)

1	Georgia	153,997
2	Texas	133,845
3	New York	126,431
4	South Carolina	120,393
5	North Carolina	113,605

INTRASTATE EXPORTS (TONNAGE)

1	Miami-Dade	2,037,489
2	Palm Beach	1,670,443
3	Collier	1,596,036
4	Broward	1,540,029
5	Hillsborough	1,192,477

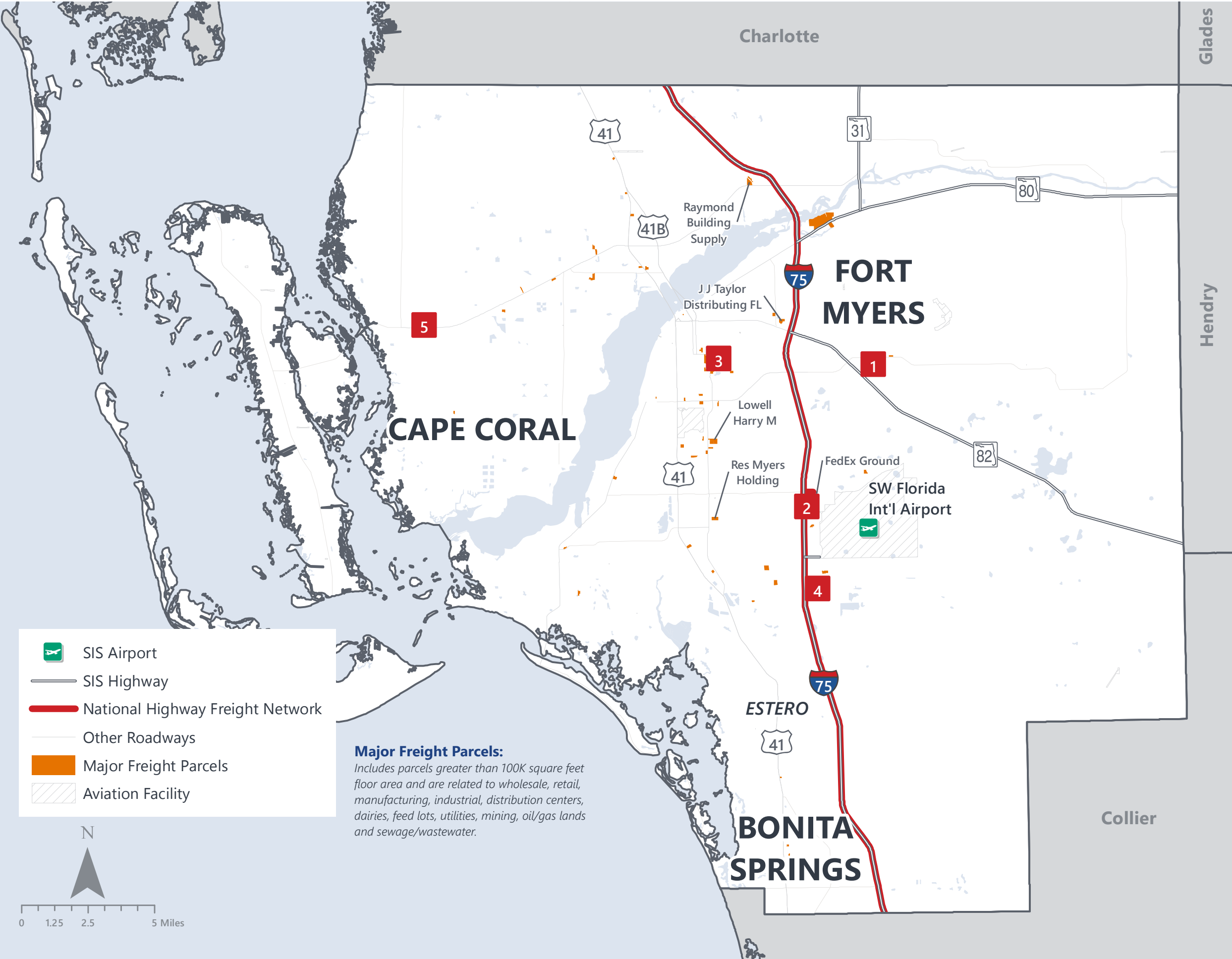
DOMESTIC IMPORTS (TONNAGE)

1	Georgia	279,333
2	Texas	161,181
3	Louisiana	152,159
4	North Carolina	138,485
5	Alabama	113,596

INTRASTATE IMPORTS (TONNAGE)

1	Miami-Dade	1,467,355
2	Hillsborough	1,149,781
3	Broward	426,073
4	Glades	420,759
5	Hernando	385,484

LEE COUNTY FREIGHT INFRASTRUCTURE



LARGEST FREIGHT EMPLOYERS

1	Leesar Inc.	400-500
2	USPS	400-500
3	UPS	300-400
4	Coca-Cola Company	300-400
5	Patrick Industries	300-400

MAJOR FREIGHT LAND USES

41.48 M SQ.FT Floor Area

81.12%	Warehousing and distribution centers
9.64%	Light manufacturing
2.47%	Airports, bus terminals and marine terminals
2.31%	Utilities
1.45%	Dairies, feed lots

889.54 M SQ.FT LAND AREA

33.94%	Mining lands, petroleum lands, or gas lands
28.23%	Sewage disposal and waste land
17.57%	Warehousing and distribution centers
7.38%	Utilities
7.24%	Dairies, feed lots

Florida Department of Economic Opportunity, 2018
Florida Department of Revenue, 2019

MAJOR COUNTY COMMODITIES



IMPORTS



TOP COMMODITY by Tonnage, 2018 (relative to Florida)

FL Rank	Commodity	% Florida Share
8	Fabricated Metal Products	3.90%
8	Marine Products	3.61%
8	Misc. Manufacturing Products	3.48%
9	Warehouse, Distribution Center and Drayage Movements	3.32%
8	Rubber or Misc. Plastics	3.30%

EXPORTS



FL Rank	Commodity	% Florida Share
3	Nonmetallic Minerals	10.79%
8	Waste or Scrap Materials	3.93%
8	Petroleum or Coal Products	3.55%
10	Clay, Concrete, Glass, Stone	2.89%
13	Misc. Manufacturing Products	1.88%

TOP COMMODITY by Value, 2018 (relative to Florida)

FL Rank	Commodity	% Florida Share
8	Fabricated Metal Products	3.76%
8	Marine Products	3.54%
9	Lumber or Wood Products	3.45%
8	Rubber or Misc. Plastics	3.21%
10	Printed Matter	3.16%

FL Rank	Commodity	% Florida Share
4	Nonmetallic Minerals	8.05%
8	Waste or Scrap Materials	3.98%
9	Lumber or Wood Products	3.46%
7	Instruments, Photo and Optical Equipment	3.11%
10	Clay, Concrete, Glass, Stone	3.08%



TRANSPORTATION STATISTICS AND FREIGHT MOVEMENT BY MODE



632 K | Daily Truck Miles Traveled
1.34 | Planning Time Index
4,573 | Public Roadway Mileage



90 Miles | Distance from closest seaport
(Port Manatee)



- | Class I Mainline Miles
- | Class II Mainline Miles
36.43 | Class III Mainline Miles (SGLR)



**1 Major
International
Airport** | Southwest Florida
International Airport

FLORIDA HIGHLIGHTS

3rd most populous US State

\$1T Gross Domestic Product

4th Largest US Economy and **17th Largest** Economy in World

Nation's **3rd largest** workforce

1 in 5 U.S. exporters are located in Florida

\$153B International Trade

1.76M jobs supported by Trade, Transportation and Utilities industry sector

1.25M jobs supported by Leisure and Hospitality industry sector

131M annual visitors

CAPITAL **TALLAHASSEE**

AREA
(SQ. MILES) **53,624**

LARGEST
CITY (SIZE) **JACKSONVILLE**

POPULATION
(2019) **21,208,589**

ANNUAL POP
GROWTH RATE
(2010-2019) **1.4%**

EMPLOYMENT
(2019) **8,884,065**

ANNUAL EMP
GROWTH RATE
(2010-2019) **2.8%**

*Bureau of Economic Business Research,
Bureau of Labor Statistics*

DOMESTIC IMPORTS

1	GEORGIA	\$44B
2	CALIFORNIA	\$29B
3	TEXAS	\$26B
4	ALABAMA	\$18B
5	ILLINOIS	\$18B

DOMESTIC EXPORTS

1	GEORGIA	\$22B
2	TEXAS	\$19B
3	CALIFORNIA	\$15B
4	NORTH CAROLINA	\$12B
5	NEW YORK	\$10B

INTERNATIONAL IMPORTS

1	CHINA	\$9.5B
2	JAPAN	\$6.5B
3	BRAZIL	\$6.4B
4	MEXICO	\$4.5B
5	CHILE	\$3.7B

INTERNATIONAL EXPORTS

1	BRAZIL	\$13.4B
2	COLOMBIA	\$4.2B
3	ARGENTINA	\$3.6B
4	DOMINICAN REPUBLIC	\$3.1B
5	CHILE	\$3B

TRANSPORTATION STATISTICS AND FREIGHT MOVEMENT BY MODE



83%
TONNAGE

71%
VALUE

123,104 Public roadway mileage
12,130 State Highway System (SHS) mileage
30.7M Daily truck miles traveled on SHS
98 Public truck parking facilities



3.5%
TONNAGE

2.9%
VALUE

15 Deepwater seaports
4.1M Twenty-foot equivalent units (TEUs)
16.8M Annual cruise passengers



6.7%
TONNAGE

1.8%
VALUE

2,936 Miles of roads
6.9M Annual rail passenger traffic



0.1%
TONNAGE

5.4%
VALUE

129 Public use airports
20 Commercial service airports
2 Active spaceports



3.6%
TONNAGE

1%
VALUE

5,899 Miles of gas transmission and hazardous liquid pipelines



3.1%
TONNAGE

17.9%
VALUE

Includes shipments by multiple modes and by parcel delivery services, U.S. Postal Service, or couriers (capped at 150 pounds). This category is not limited to containerized or trailer-on-flatcar shipments.

FLORIDA COMMODITY FLOWS (2018-2045)



IMPORTS



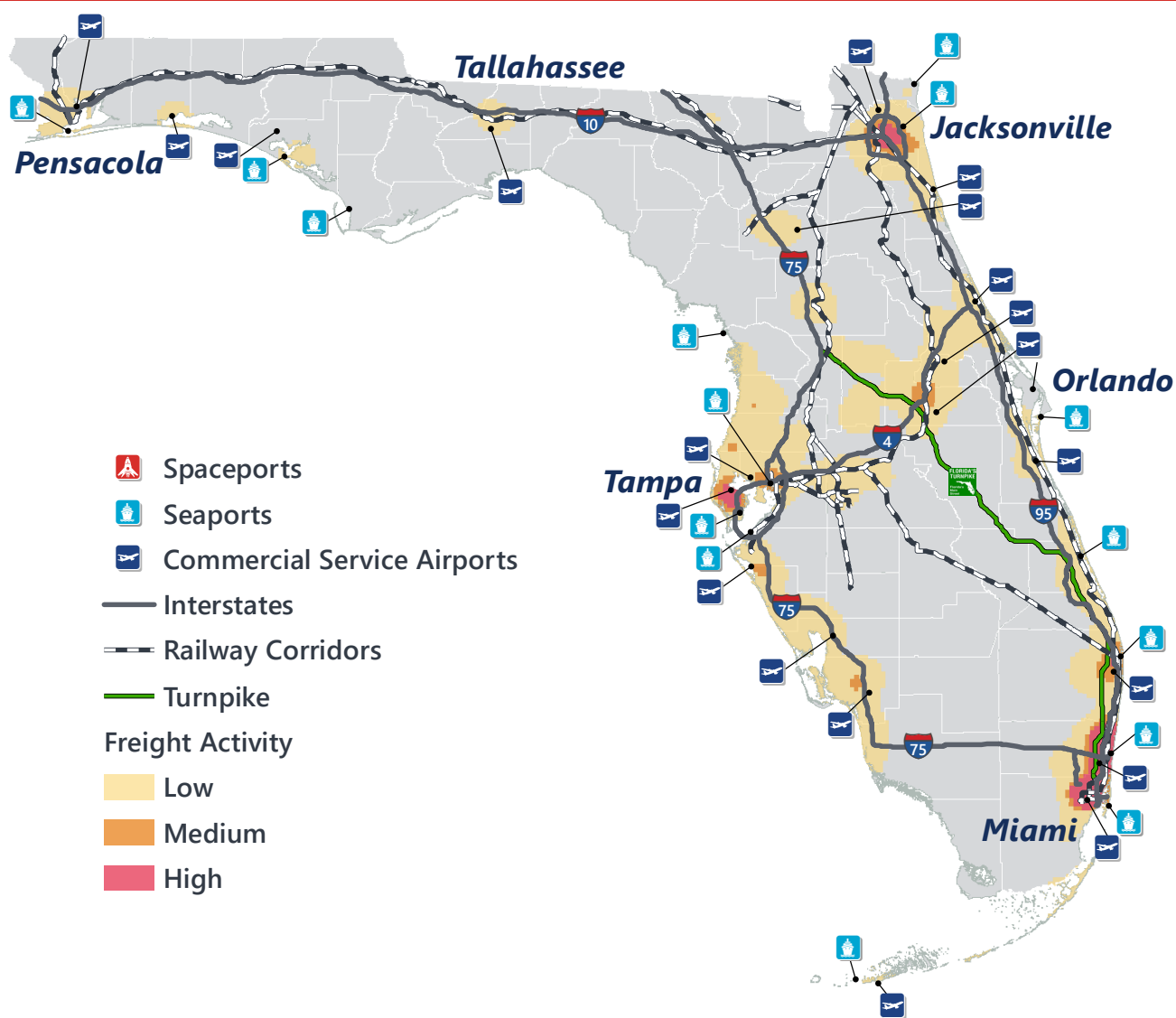
WITHIN FL



EXPORTS

	2018	2045	2018	2045	2018	2045
TONNAGE	142M	190M	656M	761M	57M	103M
VALUE	\$321B	\$690B	\$402B	\$844B	\$180B	\$606B

Freight Analysis Framework (FAF) 4.5.1.



Rickey Fitzgerald
 Manager, Freight & Multimodal Operations
 Florida Department of Transportation
 605 Suwannee Street, Tallahassee, FL 32399
 Rickey.Fitzgerald@dot.state.fl.us
 850.414.4702