

FREIGHT AND LOGISTICS OVERVIEW

FEBRUARY 2021

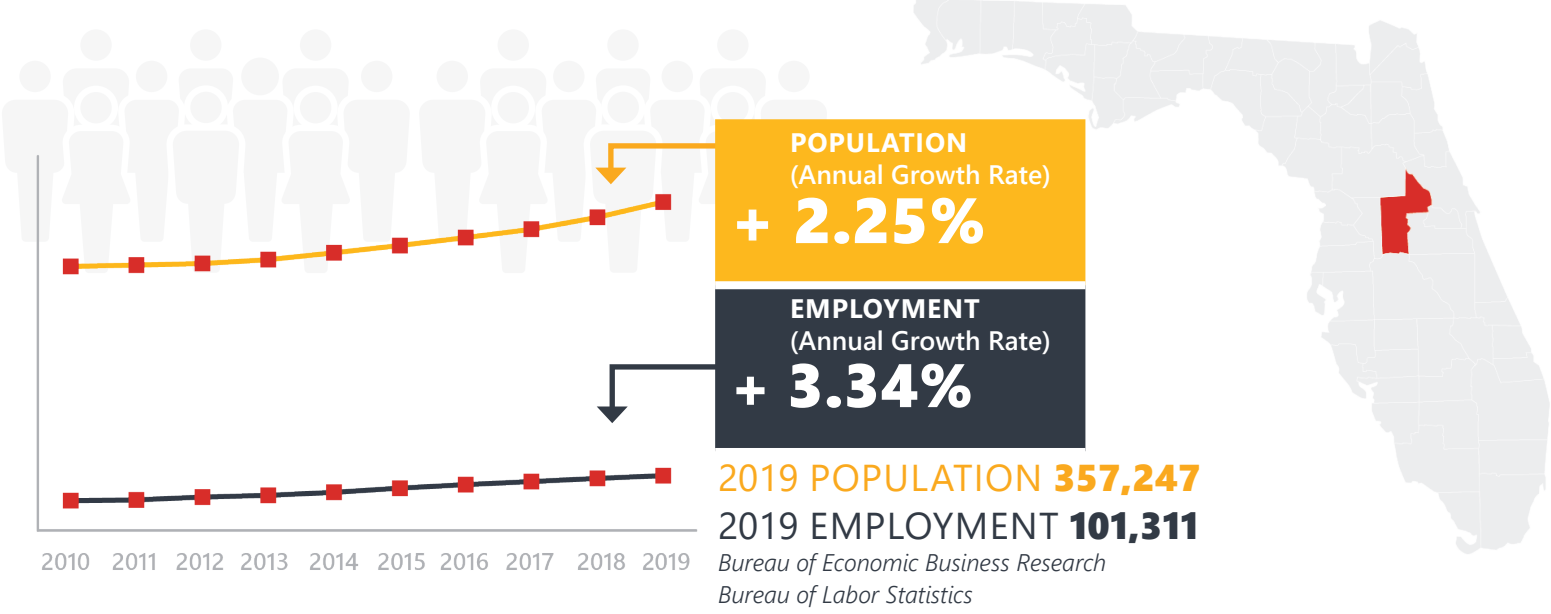
LAKE COUNTY



Mission: The department will provide a safe transportation system that ensures the mobility of people and goods, enhances economic prosperity, and preserves the quality of our environment and communities.

LAKE COUNTY HIGHLIGHTS

"THE PERFECT DISTANCE AWAY"		AREA (SQ . MILES)	1,157
COUNTY SEAT	TAVARES	LARGEST CITY (SIZE)	CLERMONT



LARGEST INDUSTRY SECTORS BY EMPLOYMENT (2019)

Office of Economic and Demographic Research



Trade, Transportation & Utilities



Education & Health Services



Leisure & Hospitality



Construction



Professional and Business Services

FASTEST GROWING INDUSTRIES (2010-2019)

LEISURE AND HOSPITALITY	JOBS ADDED	5,730
EDUCATION AND HEALTH SERVICES		5,418
TRADE, TRANSPORTATION, AND UTILITIES		4,487
CONSTRUCTION		4,051
PROFESSIONAL AND BUSINESS SERVICES		2,367

Bureau of Labor Statistics

DID YOU KNOW?

Lake County is home to over 1,400 lakes and rivers.

The annual Wings & Wildflowers Festival has secured the county's spot on the map as a premier birding destination.

Showcase of Citrus is located in Lake County and offers 50 different varieties of citrus as well as a ride on the state's largest swamp buggy.

COMMODITY FLOW HIGHLIGHTS



IMPORTS

WITHIN COUNTY

EXPORTS

2018

2045

2018

2045

2018

2045

Tonnage:	5.52 M	7.87 M	491 K	359.48 K	5.35 M	4.58 M
Value:	\$ 3.16 B	\$ 4.35 B	\$ 83.73 M	\$ 105.89 M	\$ 1.39 B	\$ 1.77 B



TOP COMMODITY by Tonnage, 2018



Nonmetallic Minerals	2,192,834
Clay, Concrete, Glass, Stone	925,936
Petroleum or Coal Products	704,619
Warehouse, Distribution Center and Drayage Movements	521,901
Food or Kindred Products	267,747

Nonmetallic Minerals	2,402,452
Clay, Concrete, Glass, Stone	1,845,705
Waste or Scrap Materials	320,754
Food or Kindred Products	204,628
Warehouse, Distribution Center and Drayage Movements	201,475



TOP COMMODITY by Value, 2018

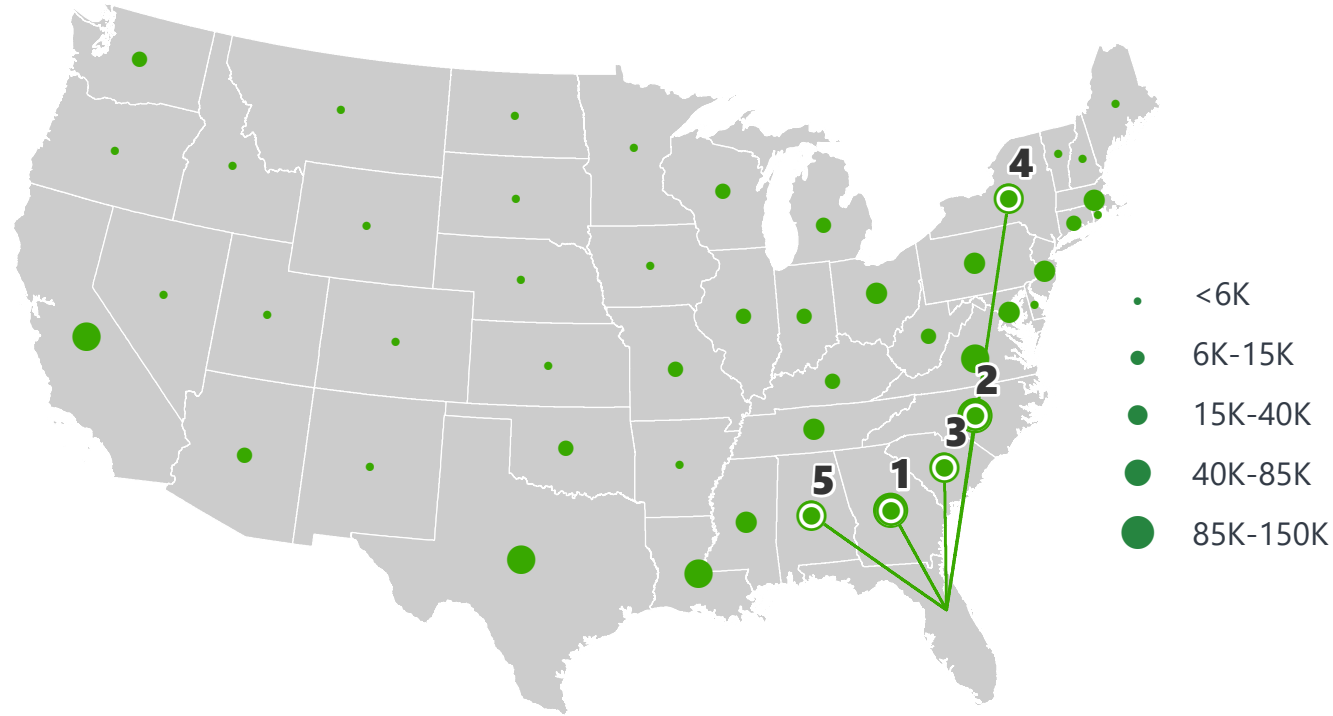


Warehouse, Distribution Center and Drayage Movements	\$ 652,871,532
Transportation Equipment	\$ 565,024,337
Food or Kindred Products	\$ 373,640,891
Petroleum or Coal Products	\$ 346,587,912
Chemicals or Allied Products	\$ 183,367,854

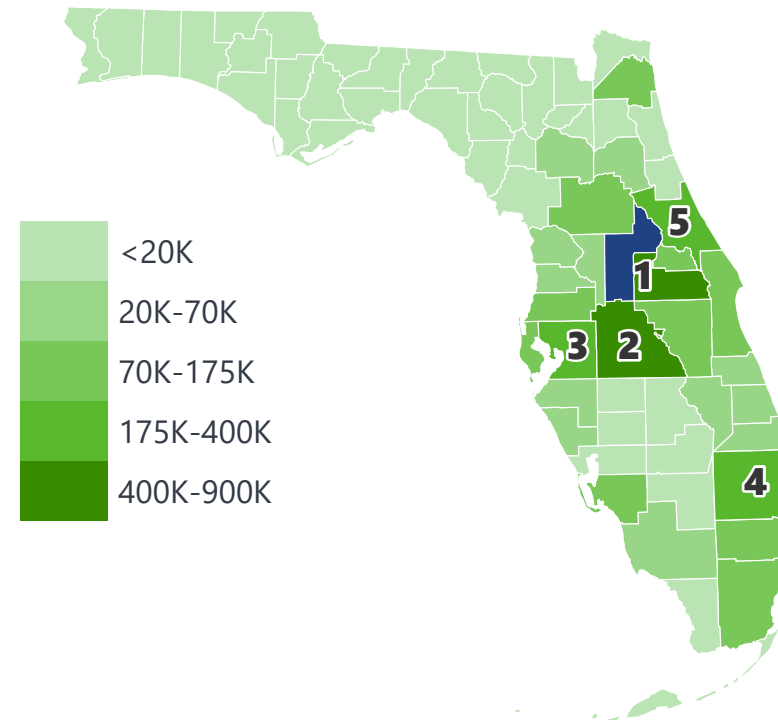
Clay, Concrete, Glass, Stone	\$ 326,081,294
Warehouse, Distribution Center and Drayage Movements	\$ 247,853,143
Food or Kindred Products	\$ 245,993,794
Lumber or Wood Products	\$ 145,923,470
Chemicals or Allied Products	\$ 85,877,613

LAKE COUNTY EXPORTS AND IMPORTS

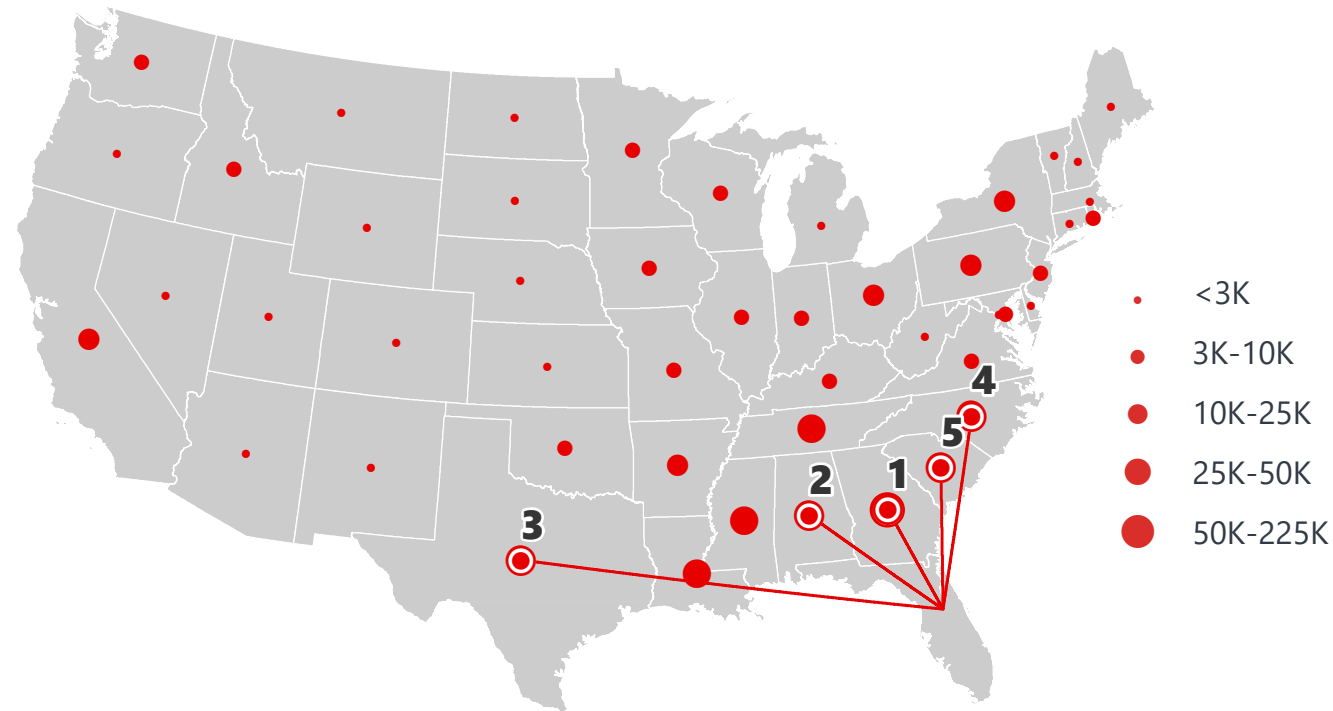
DOMESTIC EXPORTS (TONS)



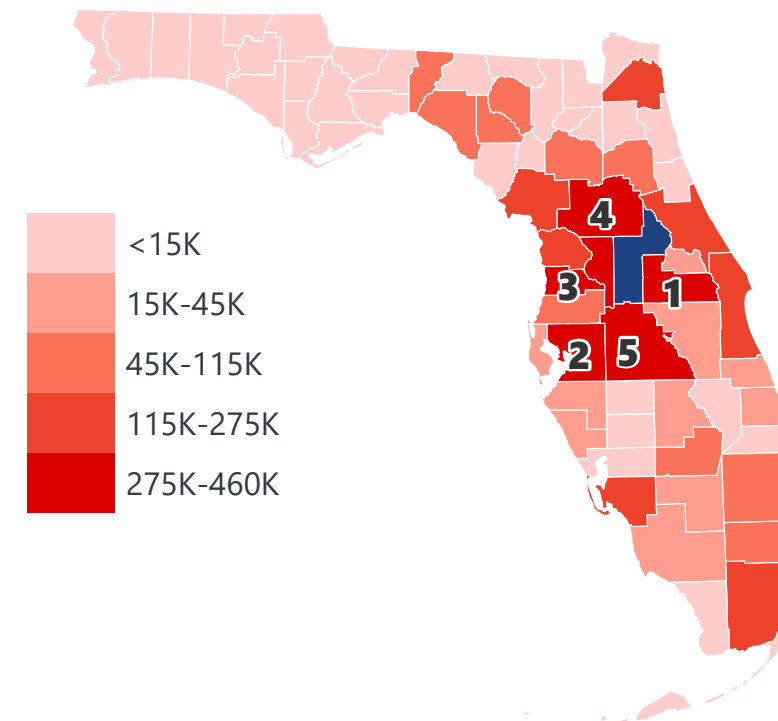
INTRASTATE EXPORTS (TONS)



DOMESTIC IMPORTS (TONS)



INTRASTATE IMPORTS (TONS)



DOMESTIC EXPORTS (TONNAGE)

1	Georgia	147,105
2	North Carolina	103,063
3	South Carolina	85,103
4	New York	63,957
5	Alabama	63,348

INTRASTATE EXPORTS (TONNAGE)

1	Orange	873,398
2	Polk	592,638
3	Hillsborough	417,892
4	Palm Beach	227,056
5	Volusia	221,272

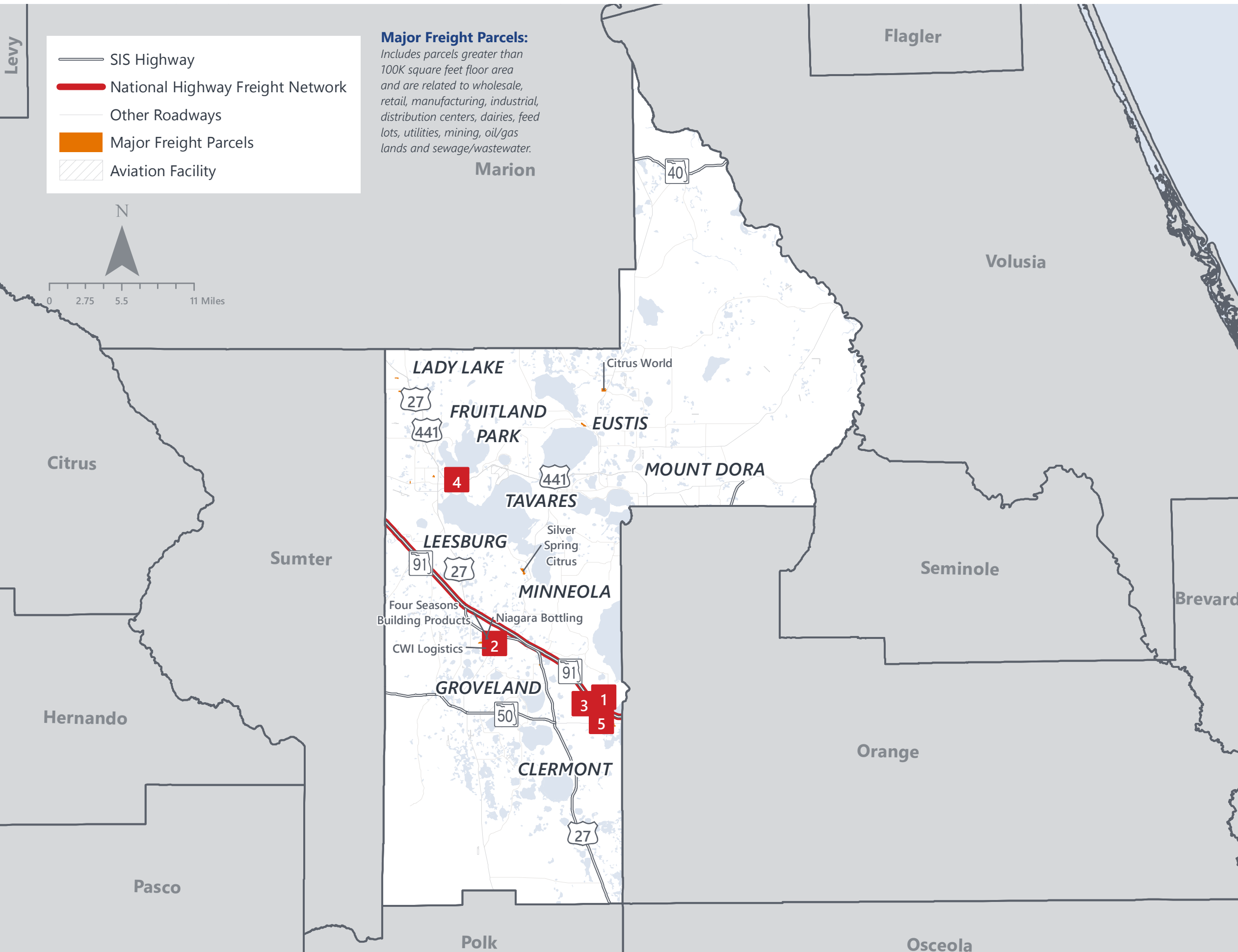
DOMESTIC IMPORTS (TONNAGE)

1	Georgia	223,368
2	Alabama	59,040
3	Texas	55,288
4	North Carolina	53,135
5	South Carolina	52,851

INTRASTATE IMPORTS (TONNAGE)

1	Orange	457,517
2	Hillsborough	425,653
3	Hernando	404,273
4	Marion	379,426
5	Polk	313,066

LAKE COUNTY FREIGHT INFRASTRUCTURE



LARGEST FREIGHT EMPLOYERS

1	Medtronic	400-500
2	Carroll Fulmer Logistics	400-500
3	Cisco	300-400
4	Cutrale Citrus Juices	300-400
5	Senninger Irrigation	200-300

MAJOR FREIGHT LAND USES

15.5 M SQ.FT Floor Area

54.43%	Warehousing and distribution centers
28.80%	Light manufacturing
7.28%	Other food processing
2.71%	Heavy industrial
1.73%	Lumber yards, sawmills, planing mills

927.3 M SQ.FT LAND AREA

66.38%	Sewage disposal and waste land
7.01%	Mining lands, petroleum lands, or gas lands
6.32%	Light manufacturing
5.79%	Warehousing and distribution centers
5.72%	Utilities

Florida Department of Economic Opportunity, 2018
Florida Department of Revenue, 2019

MAJOR COUNTY COMMODITIES



IMPORTS



TOP COMMODITY by Tonnage, 2018 (relative to Florida)

FL Rank	Commodity	% Florida Share
15	Clay, Concrete, Glass, Stone	2.23%
14	Nonmetallic Minerals	1.82%
18	Forest Products	1.66%
17	Lumber or Wood Products	1.57%
16	Farm Products	1.26%

EXPORTS



FL Rank	Commodity	% Florida Share
3	Forest Products	7.49%
7	Clay, Concrete, Glass, Stone	3.75%
11	Nonmetallic Minerals	2.33%
12	Rubber or Misc. Plastics	2.09%
16	Lumber or Wood Products	1.60%

TOP COMMODITY by Value, 2018 (relative to Florida)

FL Rank	Commodity	% Florida Share
15	Clay, Concrete, Glass, Stone	1.65%
18	Forest Products	1.63%
15	Lumber or Wood Products	1.60%
16	Farm Products	1.45%
16	Nonmetallic Minerals	1.36%

FL Rank	Commodity	% Florida Share
3	Forest Products	6.86%
8	Clay, Concrete, Glass, Stone	4.29%
11	Lumber or Wood Products	2.91%
13	Nonmetallic Minerals	1.79%
14	Food or Kindred Products	1.60%



TRANSPORTATION STATISTICS AND FREIGHT MOVEMENT BY MODE



99.29%
TONNAGE
99.17%
VALUE

614 K | Daily Truck Miles Traveled
1.20 | Planning Time Index
2,415 | Public Roadway Mileage



0.00%
TONNAGE
0.00%
VALUE

91 Miles | Distance from closest seaport
(Port Canaveral)



0.70%
TONNAGE
0.82%
VALUE

- | Class I Mainline Miles
- | Class II Mainline Miles
28.57 | Class III Mainline Miles (FCEN)



0.00%
TONNAGE
0.00%
VALUE

48 Miles | Distance from closest major
airport (Orlando International
Airport)

FLORIDA HIGHLIGHTS

3rd most populous US State
\$1T Gross Domestic Product
4th Largest US Economy and 17th Largest Economy in World
Nation's 3rd largest workforce
1 in 5 U.S. exporters are located in Florida
\$153B International Trade
1.76M jobs supported by Trade, Transportation and Utilities industry sector
1.25M jobs supported by Leisure and Hospitality industry sector
131M annual visitors

CAPITAL	TALLAHASSEE
AREA (SQ . MILES)	53,624
LARGEST CITY (SIZE)	JACKSONVILLE
POPULATION (2019)	21,208,589
ANNUAL POP GROWTH RATE (2010-2019)	1.4%
EMPLOYMENT (2019)	8,884,065
ANNUAL EMP GROWTH RATE (2010-2019)	2.8%

Bureau of Economic Business Research, Bureau of Labor Statistics

DOMESTIC IMPORTS

1	GEORGIA	\$44B
2	CALIFORNIA	\$29B
3	TEXAS	\$26B
4	ALABAMA	\$18B
5	ILLINOIS	\$18B

INTERNATIONAL IMPORTS

1	CHINA	\$9.5B
2	JAPAN	\$6.5B
3	BRAZIL	\$6.4B
4	MEXICO	\$4.5B
5	CHILE	\$3.7B

DOMESTIC EXPORTS

1	GEORGIA	\$22B
2	TEXAS	\$19B
3	CALIFORNIA	\$15B
4	NORTH CAROLINA	\$12B
5	NEW YORK	\$10B

INTERNATIONAL EXPORTS

1	BRAZIL	\$13.4B
2	COLOMBIA	\$4.2B
3	ARGENTINA	\$3.6B
4	DOMINICAN REPUBLIC	\$3.1B
5	CHILE	\$3B



TRANSPORTATION STATISTICS AND FREIGHT MOVEMENT BY MODE



83%
TONNAGE

71%
VALUE

123,104 Public roadway mileage
12,130 State Highway System (SHS) mileage
30.7M Daily truck miles traveled on SHS
98 Public truck parking facilities



3.5%
TONNAGE

2.9%
VALUE

15 Deepwater seaports
4.1M Twenty-foot equivalent units (TEUs)
16.8M Annual cruise passengers



6.7%
TONNAGE

1.8%
VALUE

2,936 Miles of roads
6.9M Annual rail passenger traffic



0.1%
TONNAGE

5.4%
VALUE

129 Public use airports
20 Commercial service airports
2 Active spaceports



3.6%
TONNAGE

1%
VALUE

5,899 Miles of gas transmission and hazardous liquid pipelines



3.1%
TONNAGE

17.9%
VALUE

Includes shipments by multiple modes and by parcel delivery services, U.S. Postal Service, or couriers (capped at 150 pounds). This category is not limited to containerized or trailer-on-flatcar shipments.

FLORIDA COMMODITY FLOWS (2018-2045)



IMPORTS



WITHIN FL



EXPORTS

	2018	2045	2018	2045	2018	2045
TONNAGE	142M	190M	656M	761M	57M	103M
VALUE	\$321B	\$690B	\$402B	\$844B	\$180B	\$606B

Freight Analysis Framework (FAF) 4.5.1.



Rickey Fitzgerald
 Manager, Freight & Multimodal Operations
 Florida Department of Transportation
 605 Suwannee Street, Tallahassee, FL 32399
 Rickey.Fitzgerald@dot.state.fl.us
 850.414.4702