

FREIGHT AND LOGISTICS OVERVIEW

FEBRUARY 2021

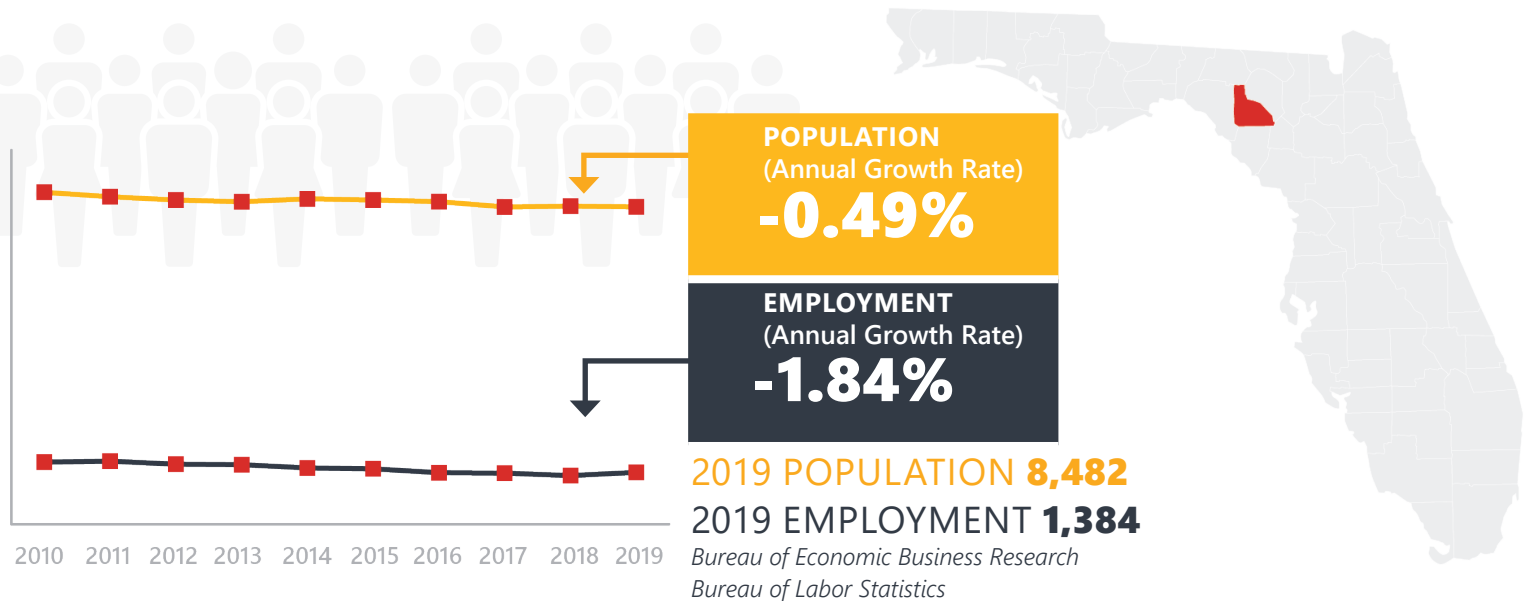
LAFAYETTE COUNTY



Mission: The department will provide a safe transportation system that ensures the mobility of people and goods, enhances economic prosperity, and preserves the quality of our environment and communities.

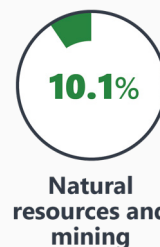
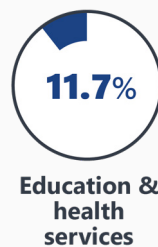
LAFAYETTE COUNTY HIGHLIGHTS

"MIRACLE WHIP"		AREA (SQ . MILES)	548
COUNTY SEAT	MAYO	LARGEST CITY (SIZE)	MAYO



LARGEST INDUSTRY SECTORS BY EMPLOYMENT (2019)

Office of Economic and Demographic Research



FASTEST GROWING INDUSTRIES (2010-2019)

EDUCATION AND HEALTH SERVICES	JOBS ADDED	41
FINANCIAL ACTIVITIES		39
TRADE, TRANSPORTATION, AND UTILITIES		21
LEISURE AND HOSPITALITY		19
MANUFACTURING		8

Bureau of Labor Statistics

DID YOU KNOW?

Lafayette County is mainly an agriculture based county focusing on dairy farms.

Three state parks, Troy Springs, Peacock Springs, and Lafayette Blue Springs, attract visitors and divers. Peacock is known as one of the very best cave diving spots in the world today.

Every year thousands of people join Mayo in the celebration of the Pioneer Day festival.

COMMODITY FLOW HIGHLIGHTS



IMPORTS

WITHIN COUNTY

EXPORTS

2018

2045

2018

2045

2018

2045

Tonnage:	99.36 K	79.81 K	6.67 K	3.81 K	2.99 M	4.6 M
Value:	\$ 42.55 M	\$ 46.16 M	\$ 1.08 M	\$ 304.69 K	\$ 263.75 M	\$ 212.18 M



TOP COMMODITY *by Tonnage, 2018*



Lumber or Wood Products	27,159
Food or Kindred Products	18,354
Petroleum or Coal Products	16,452
Nonmetallic Minerals	12,977
Clay, Concrete, Glass, Stone	8,601

Nonmetallic Minerals	2,704,920
Farm Products	236,537
Forest Products	30,485
Waste or Scrap Materials	7,576
Lumber or Wood Products	6,465



TOP COMMODITY *by Value, 2018*

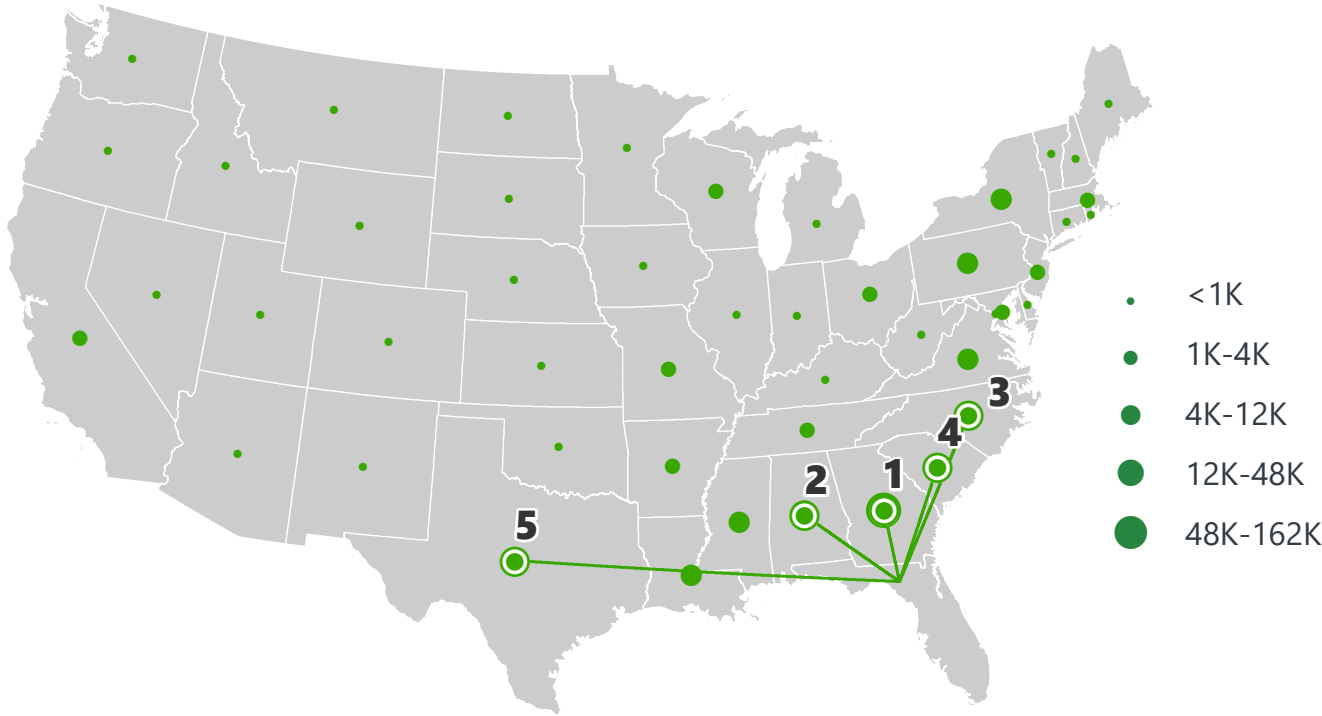


Farm Products	\$ 10,352,720
Petroleum or Coal Products	\$ 10,120,429
Warehouse, Distribution Center and Drayage Movements	\$ 9,870,413
Lumber or Wood Products	\$ 4,833,619
Food or Kindred Products	\$ 3,810,932

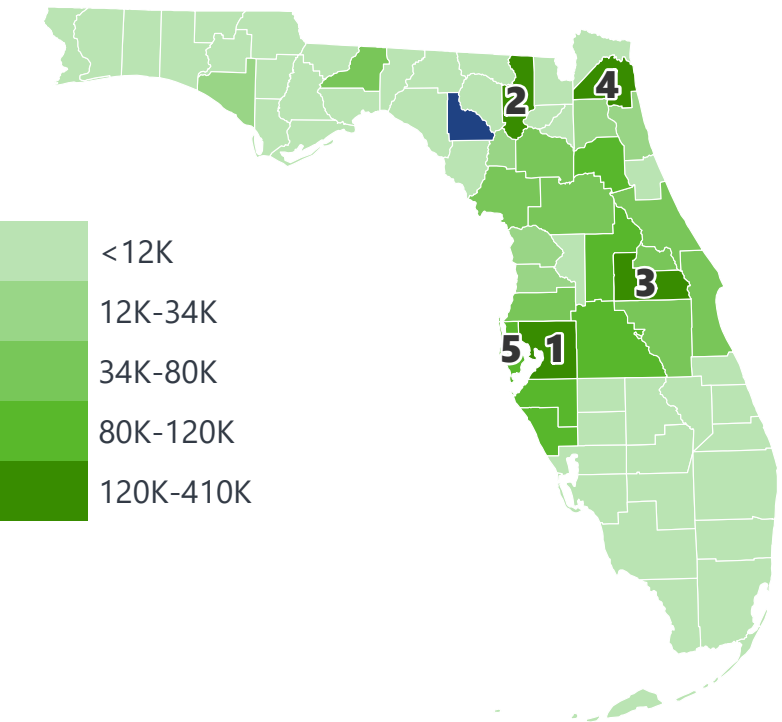
Farm Products	\$ 190,497,993
Forest Products	\$ 39,026,205
Nonmetallic Minerals	\$ 29,198,929
Lumber or Wood Products	\$ 2,271,513
Waste or Scrap Materials	\$ 1,884,952

LAFAYETTE COUNTY EXPORTS AND IMPORTS

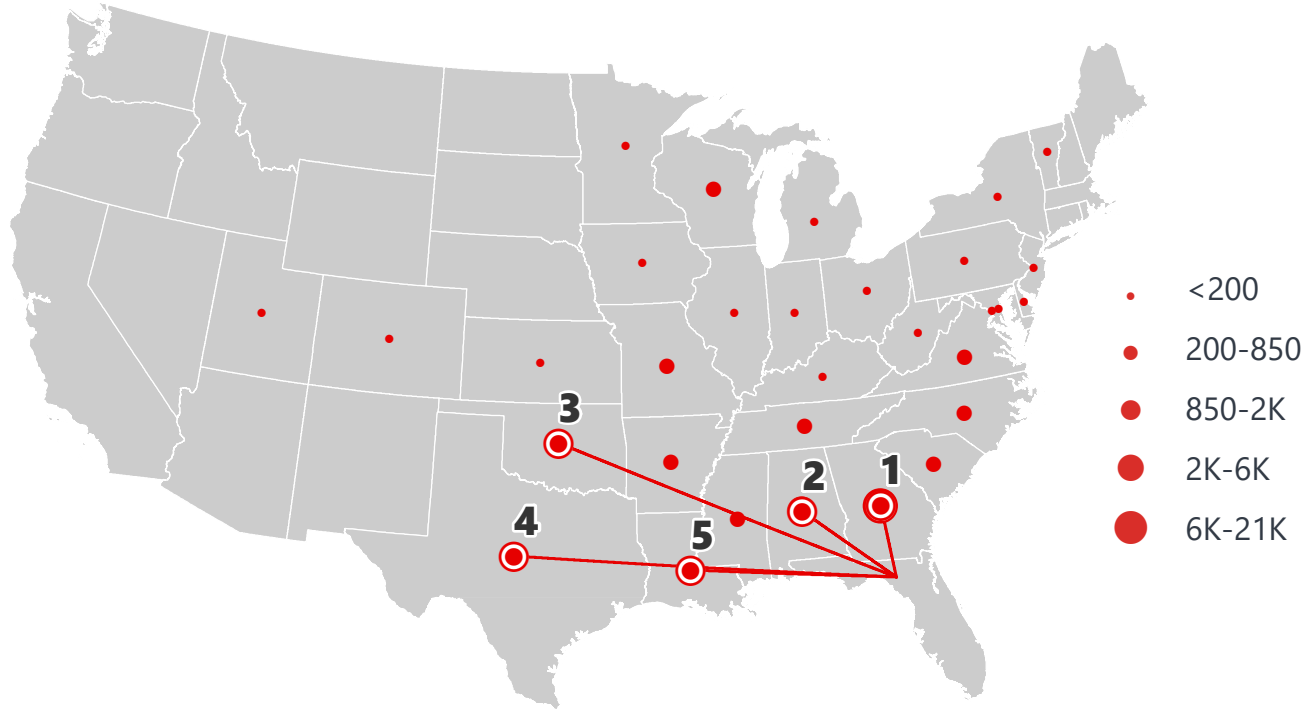
DOMESTIC EXPORTS (TONS)



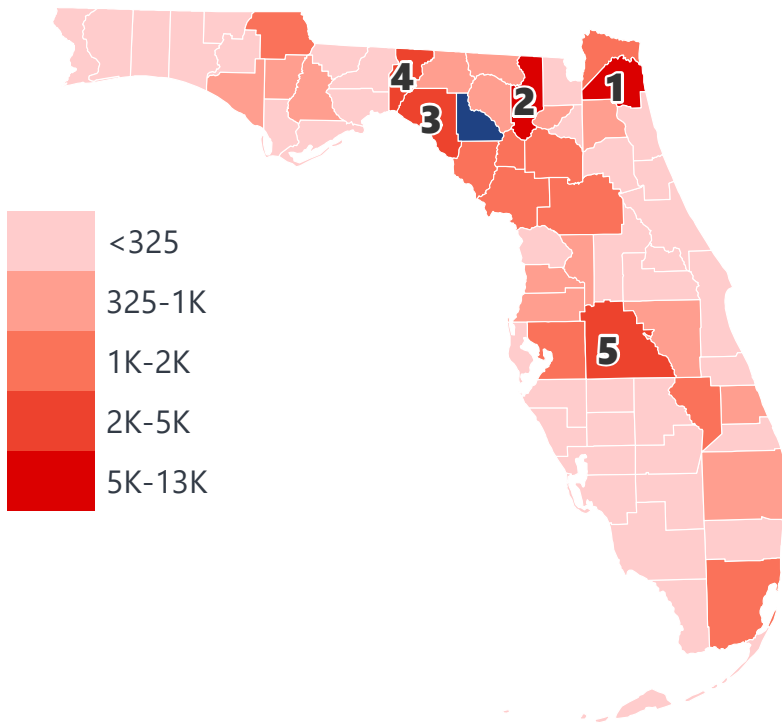
INTRASTATE EXPORTS (TONS)



DOMESTIC IMPORTS (TONS)



INTRASTATE IMPORTS (TONS)



DOMESTIC EXPORTS (TONNAGE)

1	Georgia	161,337
2	Alabama	48,649
3	North Carolina	11,369
4	South Carolina	10,067
5	Texas	8,369

INTRASTATE EXPORTS (TONNAGE)

1	Hillsborough	409,747
2	Columbia	274,436
3	Orange	268,809
4	Duval	237,916
5	Pinellas	120,756

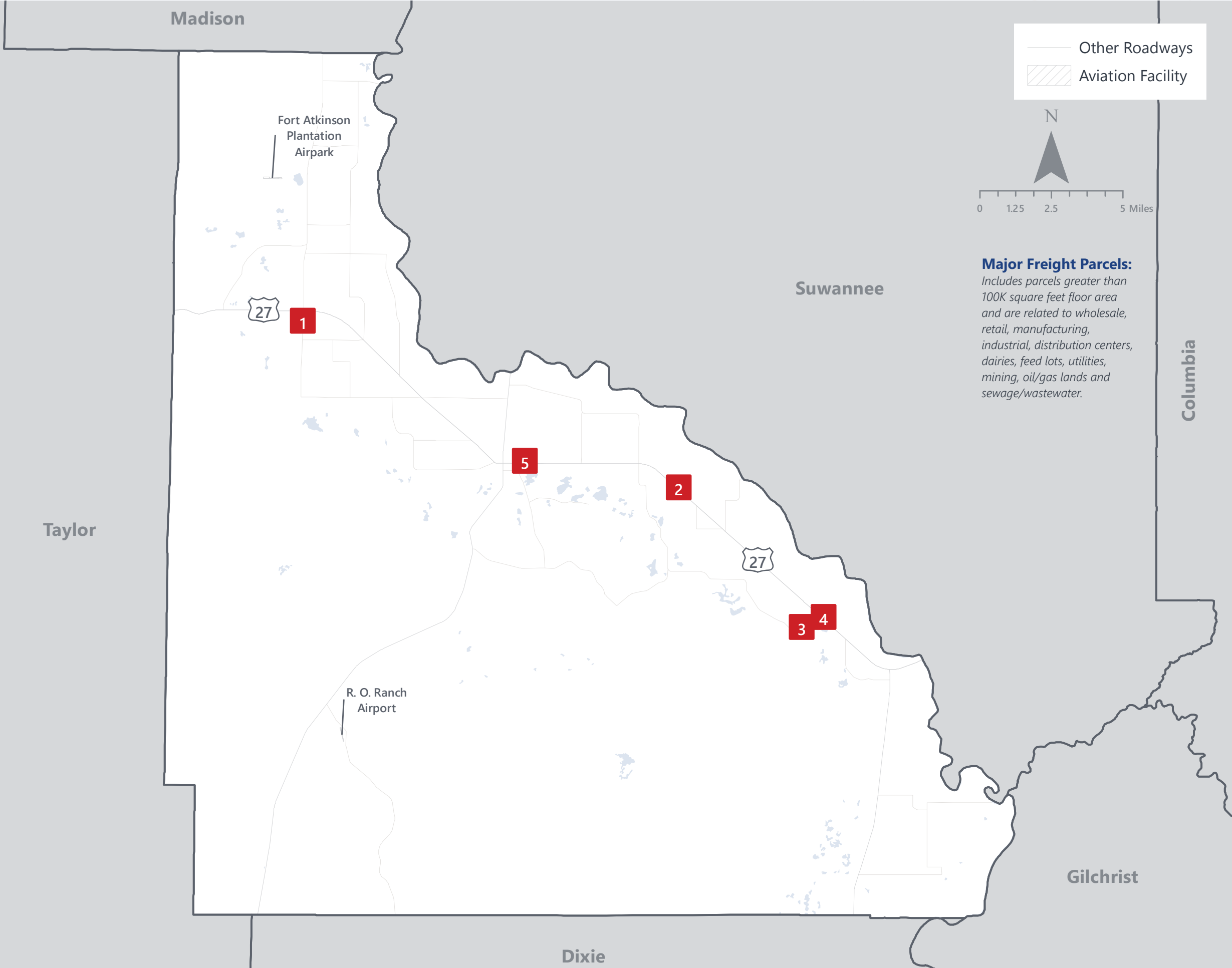
DOMESTIC IMPORTS (TONNAGE)

1	Georgia	20,452
2	Alabama	6,427
3	Oklahoma	1,906
4	Texas	1,819
5	Louisiana	850

INTRASTATE IMPORTS (TONNAGE)

1	Duval	12,125
2	Columbia	8,330
3	Taylor	4,877
4	Jefferson	4,453
5	Polk	3,641

LAFAYETTE COUNTY FREIGHT INFRASTRUCTURE



LARGEST FREIGHT EMPLOYERS

1	White Oak Dairy	0-50
2	Triple P Trucking	0-50
3	Byrds Trucking	0-50
4	Williams Dairy	0-50
5	Southeast Milk	0-50

MAJOR FREIGHT LAND USES

0.2 M SQ.FT Floor Area

39.57%	Light manufacturing
34.45%	Warehousing and distribution centers
19.54%	Dairies, feed lots
4.75%	Fruit, vegetable and meat packing plants
1.68%	Utilities

142.7 M SQ.FT LAND AREA

86.85%	Dairies, feed lots
6.20%	Mining lands, petroleum lands, or gas lands
4.71%	Light manufacturing
0.92%	Warehousing and distribution centers
0.90%	Utilities

Florida Department of Economic Opportunity, 2018
Florida Department of Revenue, 2019

MAJOR COUNTY COMMODITIES



IMPORTS



TOP COMMODITY by Tonnage, 2018 (relative to Florida)

FL Rank	Commodity	% Florida Share
43	Forest Products	0.27%
48	Lumber or Wood Products	0.20%
46	Food or Kindred Products	0.07%
48	Farm Products	0.04%
66	Petroleum or Coal Products	0.02%

EXPORTS



FL Rank	Commodity	% Florida Share
2	Forest Products	15.88%
9	Nonmetallic Minerals	2.62%
16	Farm Products	1.70%
60	Lumber or Wood Products	0.07%
62	Waste or Scrap Materials	0.03%

TOP COMMODITY by Value, 2018 (relative to Florida)

FL Rank	Commodity	% Florida Share
43	Forest Products	0.23%
47	Farm Products	0.12%
55	Lumber or Wood Products	0.06%
66	Petroleum or Coal Products	0.02%
66	Warehouse, Distribution Center and Drayage Movements	0.01%

FL Rank	Commodity	% Florida Share
2	Forest Products	15.78%
10	Farm Products	2.13%
12	Nonmetallic Minerals	1.93%
63	Lumber or Wood Products	0.05%
62	Waste or Scrap Materials	0.03%



TRANSPORTATION STATISTICS AND FREIGHT MOVEMENT BY MODE



26 K | Daily Truck Miles Traveled
- Planning Time Index
491 | Public Roadway Mileage



110 Miles | Distance from closest seaport (JAXPORT)



- Class I Mainline Miles
- Class II Mainline Miles
- Class III Mainline Miles



89 Miles | Distance from closest airport (Tallahassee International Airport)

FLORIDA HIGHLIGHTS

3rd most populous US State

\$1T Gross Domestic Product

4th Largest US Economy and **17th Largest** Economy in World

Nation's **3rd largest** workforce

1 in 5 U.S. exporters are located in Florida

\$153B International Trade

1.76M jobs supported by Trade, Transportation and Utilities industry sector

1.25M jobs supported by Leisure and Hospitality industry sector

131M annual visitors

CAPITAL **TALLAHASSEE**

AREA (SQ. MILES) **53,624**

LARGEST CITY (SIZE) **JACKSONVILLE**

POPULATION (2019) **21,208,589**

ANNUAL POP GROWTH RATE (2010-2019) **1.4%**

EMPLOYMENT (2019) **8,884,065**

ANNUAL EMP GROWTH RATE (2010-2019) **2.8%**

*Bureau of Economic Business Research,
Bureau of Labor Statistics*

DOMESTIC IMPORTS

1	GEORGIA	\$44B
2	CALIFORNIA	\$29B
3	TEXAS	\$26B
4	ALABAMA	\$18B
5	ILLINOIS	\$18B

DOMESTIC EXPORTS

1	GEORGIA	\$22B
2	TEXAS	\$19B
3	CALIFORNIA	\$15B
4	NORTH CAROLINA	\$12B
5	NEW YORK	\$10B

INTERNATIONAL IMPORTS

1	CHINA	\$9.5B
2	JAPAN	\$6.5B
3	BRAZIL	\$6.4B
4	MEXICO	\$4.5B
5	CHILE	\$3.7B

INTERNATIONAL EXPORTS

1	BRAZIL	\$13.4B
2	COLOMBIA	\$4.2B
3	ARGENTINA	\$3.6B
4	DOMINICAN REPUBLIC	\$3.1B
5	CHILE	\$3B

TRANSPORTATION STATISTICS AND FREIGHT MOVEMENT BY MODE



83%
TONNAGE

71%
VALUE

123,104 Public roadway mileage
12,130 State Highway System (SHS) mileage
30.7M Daily truck miles traveled on SHS
98 Public truck parking facilities



3.5%
TONNAGE

2.9%
VALUE

15 Deepwater seaports
4.1M Twenty-foot equivalent units (TEUs)
16.8M Annual cruise passengers



6.7%
TONNAGE

1.8%
VALUE

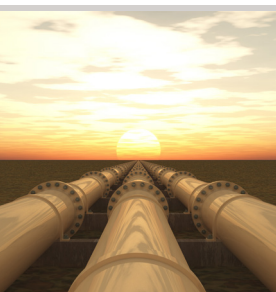
2,936 Miles of roads
6.9M Annual rail passenger traffic



0.1%
TONNAGE

5.4%
VALUE

129 Public use airports
20 Commercial service airports
2 Active spaceports



3.6%
TONNAGE

1%
VALUE

5,899 Miles of gas transmission and hazardous liquid pipelines



3.1%
TONNAGE

17.9%
VALUE

Includes shipments by multiple modes and by parcel delivery services, U.S. Postal Service, or couriers (capped at 150 pounds). This category is not limited to containerized or trailer-on-flatcar shipments.

FLORIDA COMMODITY FLOWS (2018-2045)



IMPORTS



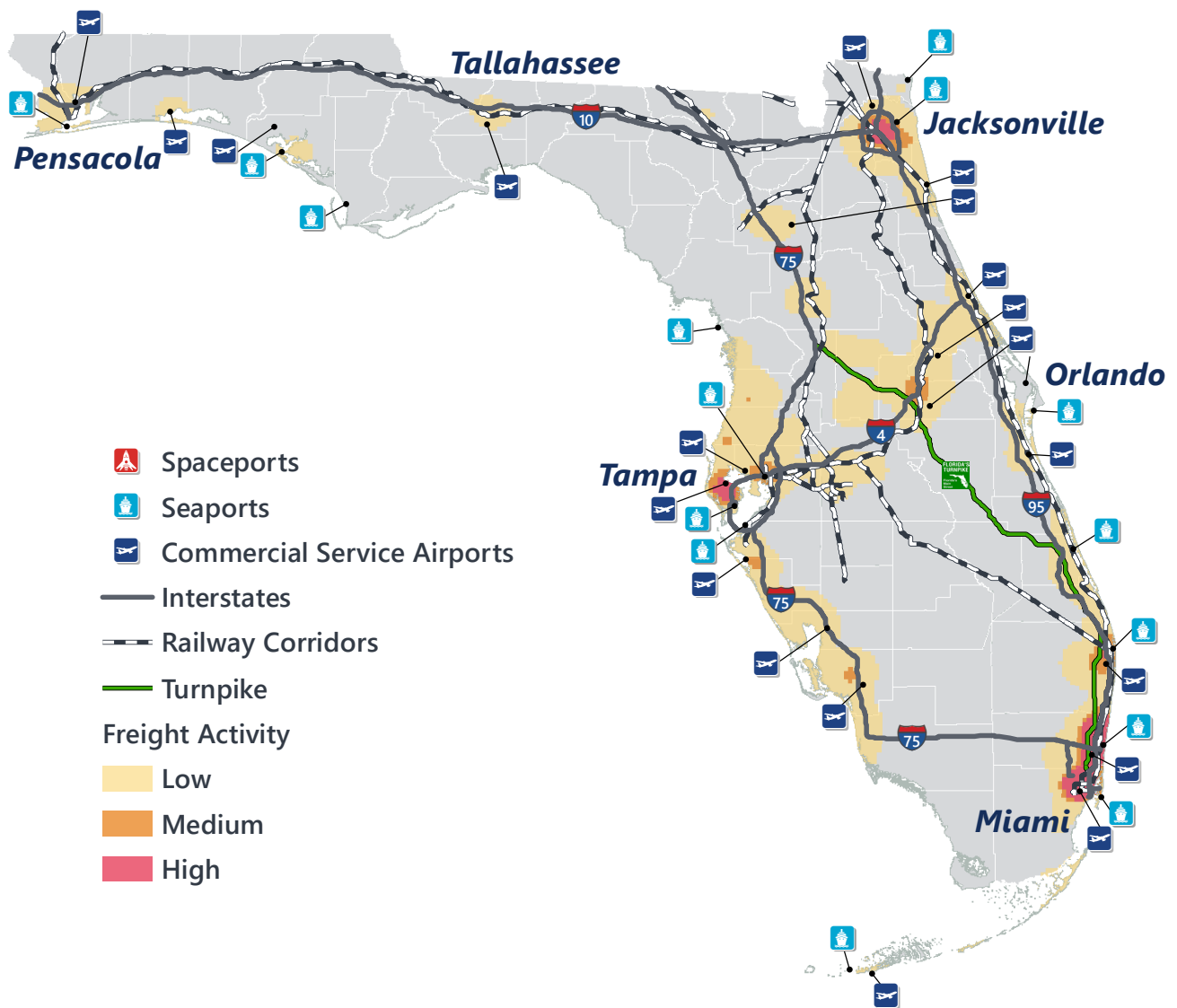
WITHIN FL



EXPORTS

	2018	2045	2018	2045	2018	2045
TONNAGE	142M	190M	656M	761M	57M	103M
VALUE	\$321B	\$690B	\$402B	\$844B	\$180B	\$606B

Freight Analysis Framework (FAF) 4.5.1.



Rickey Fitzgerald
 Manager, Freight & Multimodal Operations
 Florida Department of Transportation
 605 Suwannee Street, Tallahassee, FL 32399
 Rickey.Fitzgerald@dot.state.fl.us
 850.414.4702