

FREIGHT AND LOGISTICS OVERVIEW

FEBRUARY 2021

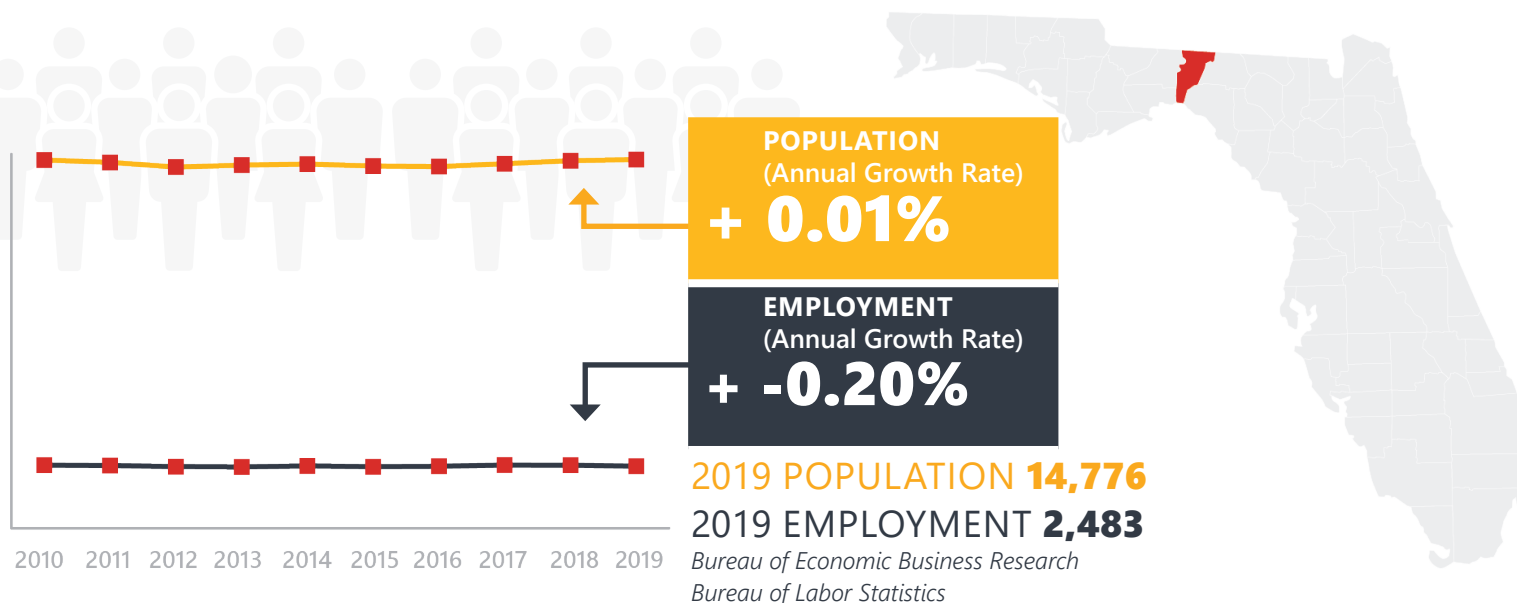
JEFFERSON COUNTY



Mission: The department will provide a safe transportation system that ensures the mobility of people and goods, enhances economic prosperity, and preserves the quality of our environment and communities.

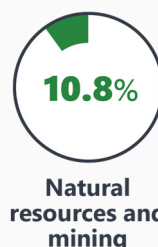
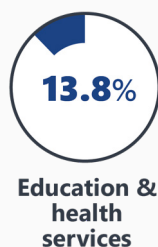
JEFFERSON COUNTY HIGHLIGHTS

| | | | |
|-------------------|------------|---------------------|------------|
| "KEYSTONE COUNTY" | | AREA (SQ . MILES) | 637 |
| COUNTY SEAT | MONTICELLO | LARGEST CITY (SIZE) | MONTICELLO |



LARGEST INDUSTRY SECTORS BY EMPLOYMENT (2019)

Office of Economic and Demographic Research



FASTEST GROWING INDUSTRIES (2010-2019)

| | | |
|------------------------------------|------------|----|
| EDUCATION AND HEALTH SERVICES | JOBS ADDED | 86 |
| FINANCIAL ACTIVITIES | | 66 |
| PROFESSIONAL AND BUSINESS SERVICES | | 60 |
| CONSTRUCTION | | 40 |
| OTHER SERVICES | | 33 |

Bureau of Labor Statistics

DID YOU KNOW?

About 900,000 acres of the county are held as plantations, primarily mixed use timber and wildlife habitat. Of those acres, over 37,000 are managed under perpetual private conservation easements.

An annual community highlight, the Watermelon Festival, was established over 70 years ago to recognize local watermelon growers.

The Monticello Historic District encompasses twenty-seven city blocks and a historical study finds that there are nearly 600 buildings which were built before 1930.

COMMODITY FLOW HIGHLIGHTS



IMPORTS

WITHIN COUNTY

EXPORTS

2018

2045

2018

2045

2018

2045

| | | | | | | |
|----------|----------|------------|-------------|-------------|------------|------------|
| Tonnage: | 102.89 K | 111.90 K | 14.97 K | 10.17 K | 2.94 M | 4.43 M |
| Value: | \$ 48 M | \$ 73.39 M | \$ 183.58 K | \$ 110.39 K | \$ 62.72 M | \$ 80.92 M |



TOP COMMODITY *by Tonnage, 2018*



| | |
|------------------------------------------------------|--------|
| Nonmetallic Minerals | 38,031 |
| Petroleum or Coal Products | 21,201 |
| Warehouse, Distribution Center and Drayage Movements | 18,425 |
| Clay, Concrete, Glass, Stone | 14,452 |
| Lumber or Wood Products | 6,915 |

| | |
|--------------------------|-----------|
| Nonmetallic Minerals | 2,406,367 |
| Lumber or Wood Products | 44,169 |
| Farm Products | 31,915 |
| Waste or Scrap Materials | 7,804 |
| Forest Products | 2,307 |



TOP COMMODITY *by Value, 2018*

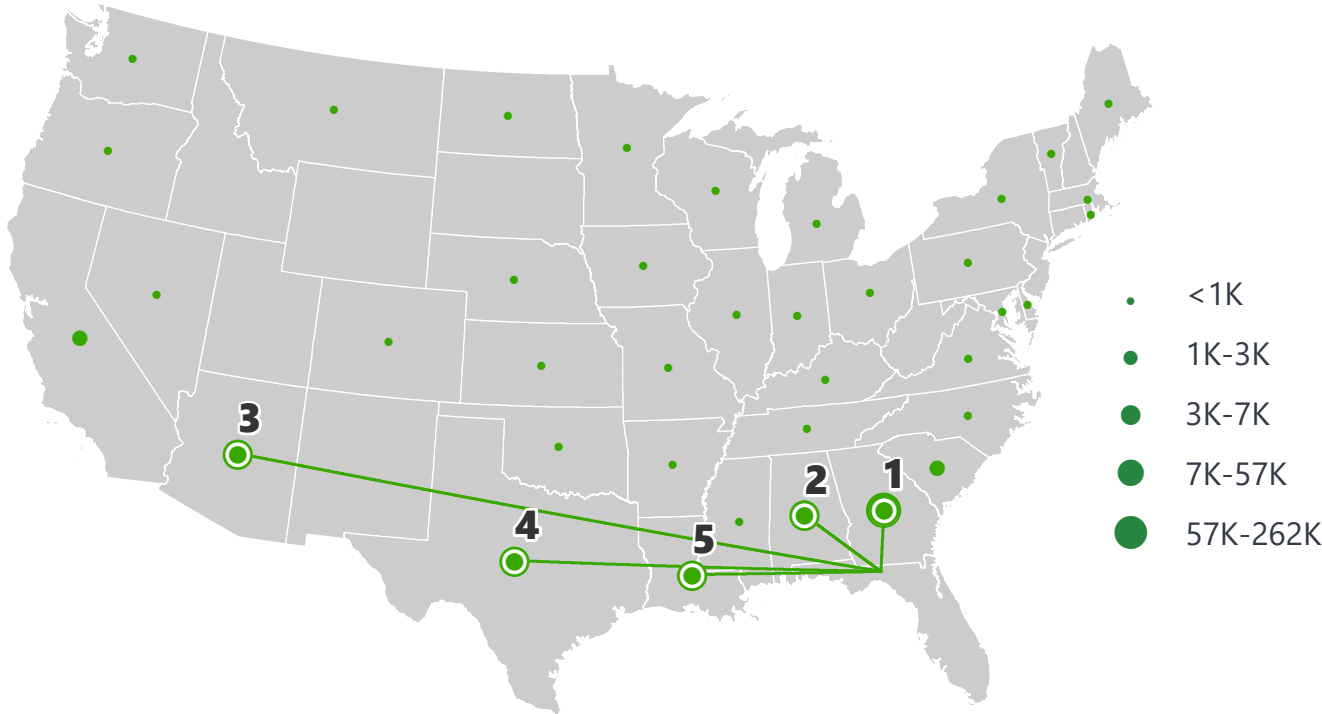


| | |
|------------------------------------------------------|---------------|
| Warehouse, Distribution Center and Drayage Movements | \$ 22,582,872 |
| Petroleum or Coal Products | \$ 12,999,146 |
| Transportation Equipment | \$ 6,548,734 |
| Clay, Concrete, Glass, Stone | \$ 1,646,700 |
| Lumber or Wood Products | \$ 1,406,764 |

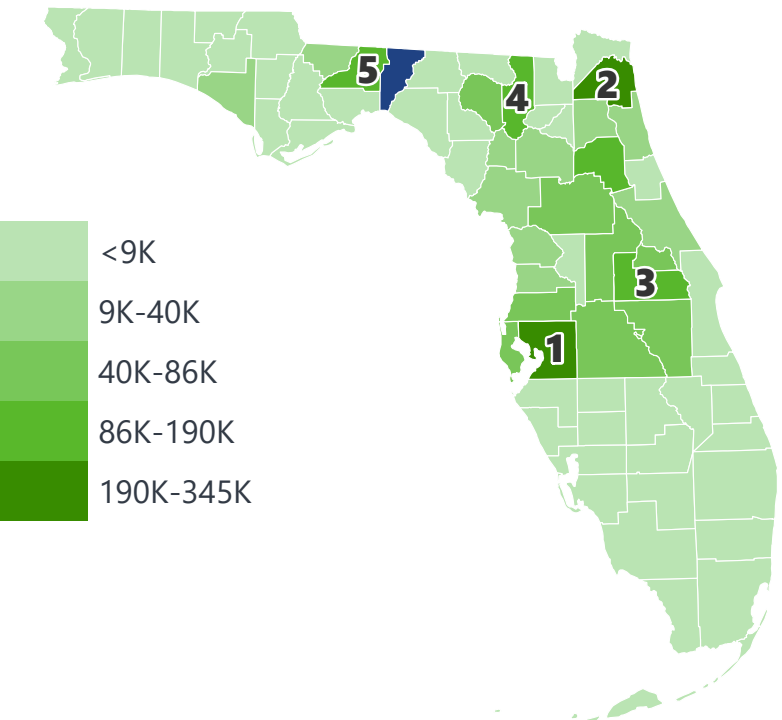
| | |
|------------------------------------------------------|---------------|
| Nonmetallic Minerals | \$ 25,975,388 |
| Farm Products | \$ 20,574,015 |
| Lumber or Wood Products | \$ 7,733,124 |
| Warehouse, Distribution Center and Drayage Movements | \$ 3,362,497 |
| Forest Products | \$ 3,161,871 |

JEFFERSON COUNTY EXPORTS AND IMPORTS

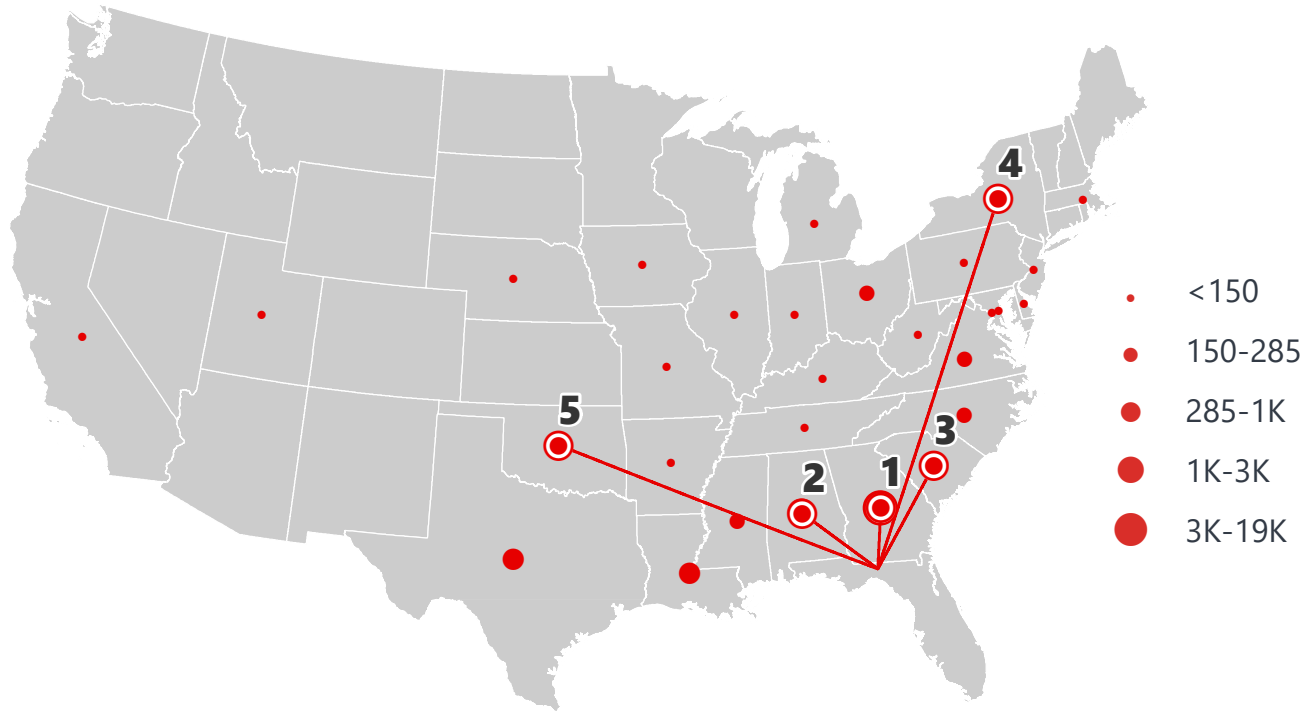
DOMESTIC EXPORTS (TONS)



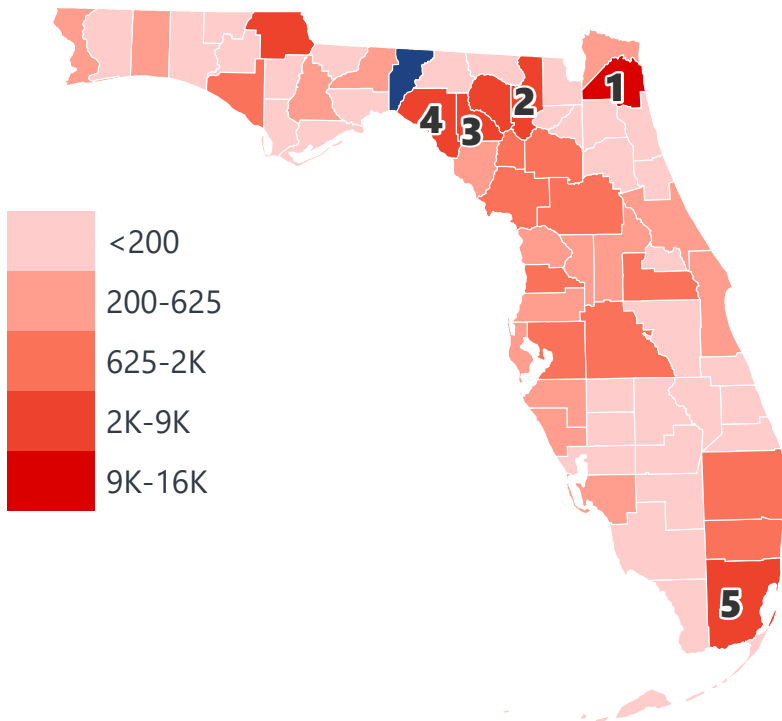
INTRASTATE EXPORTS (TONS)



DOMESTIC IMPORTS (TONS)



INTRASTATE IMPORTS (TONS)



DOMESTIC EXPORTS (TONNAGE)

| | | |
|---|-----------|---------|
| 1 | Georgia | 261,255 |
| 2 | Alabama | 56,811 |
| 3 | Arizona | 6,591 |
| 4 | Texas | 2,645 |
| 5 | Louisiana | 2,555 |

INTRASTATE EXPORTS (TONNAGE)

| | | |
|---|--------------|---------|
| 1 | Hillsborough | 344,067 |
| 2 | Duval | 265,570 |
| 3 | Orange | 190,290 |
| 4 | Columbia | 173,346 |
| 5 | Leon | 146,681 |

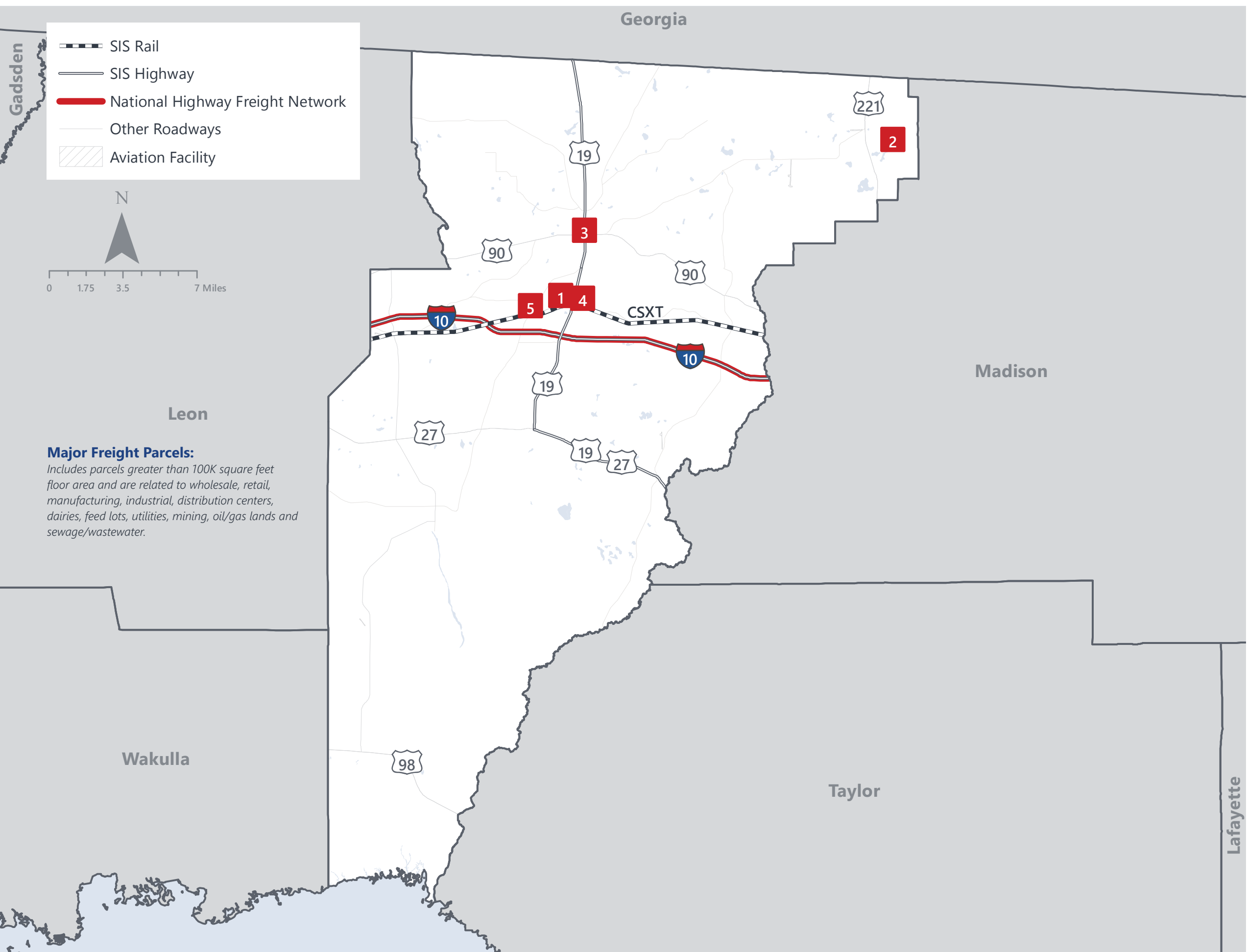
DOMESTIC IMPORTS (TONNAGE)

| | | |
|---|----------------|--------|
| 1 | Georgia | 18,944 |
| 2 | Alabama | 2,683 |
| 3 | South Carolina | 954 |
| 4 | New York | 930 |
| 5 | Oklahoma | 884 |

INTRASTATE IMPORTS (TONNAGE)

| | | |
|---|------------|--------|
| 1 | Duval | 15,113 |
| 2 | Columbia | 9,128 |
| 3 | Lafayette | 8,372 |
| 4 | Taylor | 6,836 |
| 5 | Miami-Dade | 6,150 |

JEFFERSON COUNTY FREIGHT INFRASTRUCTURE



LARGEST FREIGHT EMPLOYERS

| | | |
|---|---------------------|--------|
| 1 | Con-Way Freight | 50-100 |
| 2 | Jeffco Dairy | 0-50 |
| 3 | USPS | 0-50 |
| 4 | P S Art Co. | 0-50 |
| 5 | Walker & Sons Farms | 0-50 |

MAJOR FREIGHT LAND USES

0.5 M SQ.FT Floor Area

| | |
|--------|----------------------------------------------------------|
| 42.95% | Warehousing and distribution centers |
| 14.23% | Fruit, vegetable and meat packing plants |
| 13.39% | Light manufacturing |
| 10.78% | Wholesale outlets, produce houses, manufacturing outlets |
| 10.03% | Utilities |

42.3 M SQ.FT LAND AREA

| | |
|--------|----------------------------------------------------------|
| 73.61% | Utilities |
| 11.62% | Warehousing and distribution centers |
| 8.42% | Sewage disposal and waste land |
| 2.16% | Light manufacturing |
| 1.40% | Wholesale outlets, produce houses, manufacturing outlets |

Florida Department of Economic Opportunity, 2018
Florida Department of Revenue, 2019

MAJOR COUNTY COMMODITIES



IMPORTS



TOP COMMODITY by Tonnage, 2018 (relative to Florida)

| FL Rank | Commodity | % Florida Share |
|---------|------------------------------------------------------|-----------------|
| 61 | Lumber or Wood Products | 0.05% |
| 60 | Warehouse, Distribution Center and Drayage Movements | 0.04% |
| 62 | Clay, Concrete, Glass, Stone | 0.03% |
| 56 | Nonmetallic Minerals | 0.03% |
| 64 | Petroleum or Coal Products | 0.03% |

EXPORTS



| FL Rank | Commodity | % Florida Share |
|---------|--------------------------|-----------------|
| 10 | Nonmetallic Minerals | 2.33% |
| 18 | Forest Products | 1.20% |
| 45 | Lumber or Wood Products | 0.47% |
| 44 | Farm Products | 0.23% |
| 61 | Waste or Scrap Materials | 0.03% |

TOP COMMODITY by Value, 2018 (relative to Florida)

| FL Rank | Commodity | % Florida Share |
|---------|------------------------------------------------------|-----------------|
| 62 | Petroleum or Coal Products | 0.03% |
| 61 | Warehouse, Distribution Center and Drayage Movements | 0.03% |
| 57 | Nonmetallic Minerals | 0.02% |
| 63 | Clay, Concrete, Glass, Stone | 0.02% |
| 56 | Forest Products | 0.02% |

| FL Rank | Commodity | % Florida Share |
|---------|--------------------------|-----------------|
| 15 | Nonmetallic Minerals | 1.71% |
| 18 | Forest Products | 1.28% |
| 43 | Farm Products | 0.23% |
| 55 | Lumber or Wood Products | 0.15% |
| 61 | Waste or Scrap Materials | 0.03% |



TRANSPORTATION STATISTICS AND FREIGHT MOVEMENT BY MODE



167 K | Daily Truck Miles Traveled
1.15 | Planning Time Index
694 | Public Roadway Mileage



100 Miles | Distance from closest seaport
(Port of Port St. Joe)



19.13 | Class I Mainline Miles (CSX)
- Class II Mainline Miles
- Class III Mainline Miles



30 Miles | Distance from closest airport
(Tallahassee International Airport)

FLORIDA HIGHLIGHTS

3rd most populous US State

\$1T Gross Domestic Product

4th Largest US Economy and **17th Largest** Economy in World

Nation's **3rd largest** workforce

1 in 5 U.S. exporters are located in Florida

\$153B International Trade

1.76M jobs supported by Trade, Transportation and Utilities industry sector

1.25M jobs supported by Leisure and Hospitality industry sector

131M annual visitors

CAPITAL **TALLAHASSEE**

AREA (SQ. MILES) **53,624**

LARGEST CITY (SIZE) **JACKSONVILLE**

POPULATION (2019) **21,208,589**

ANNUAL POP GROWTH RATE (2010-2019) **1.4%**

EMPLOYMENT (2019) **8,884,065**

ANNUAL EMP GROWTH RATE (2010-2019) **2.8%**

*Bureau of Economic Business Research,
Bureau of Labor Statistics*

DOMESTIC IMPORTS

| | | |
|----------|-------------------|-------|
| 1 | GEORGIA | \$44B |
| 2 | CALIFORNIA | \$29B |
| 3 | TEXAS | \$26B |
| 4 | ALABAMA | \$18B |
| 5 | ILLINOIS | \$18B |

DOMESTIC EXPORTS

| | | |
|----------|-----------------------|-------|
| 1 | GEORGIA | \$22B |
| 2 | TEXAS | \$19B |
| 3 | CALIFORNIA | \$15B |
| 4 | NORTH CAROLINA | \$12B |
| 5 | NEW YORK | \$10B |

INTERNATIONAL IMPORTS

| | | |
|----------|---------------|--------|
| 1 | CHINA | \$9.5B |
| 2 | JAPAN | \$6.5B |
| 3 | BRAZIL | \$6.4B |
| 4 | MEXICO | \$4.5B |
| 5 | CHILE | \$3.7B |

INTERNATIONAL EXPORTS

| | | |
|----------|---------------------------|---------|
| 1 | BRAZIL | \$13.4B |
| 2 | COLOMBIA | \$4.2B |
| 3 | ARGENTINA | \$3.6B |
| 4 | DOMINICAN REPUBLIC | \$3.1B |
| 5 | CHILE | \$3B |

TRANSPORTATION STATISTICS AND FREIGHT MOVEMENT BY MODE



83%
TONNAGE

71%
VALUE

123,104 Public roadway mileage
12,130 State Highway System (SHS) mileage
30.7M Daily truck miles traveled on SHS
98 Public truck parking facilities



3.5%
TONNAGE

2.9%
VALUE

15 Deepwater seaports
4.1M Twenty-foot equivalent units (TEUs)
16.8M Annual cruise passengers



6.7%
TONNAGE

1.8%
VALUE

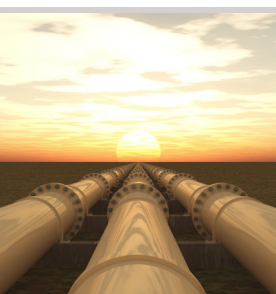
2,936 Miles of roads
6.9M Annual rail passenger traffic



0.1%
TONNAGE

5.4%
VALUE

129 Public use airports
20 Commercial service airports
2 Active spaceports



3.6%
TONNAGE

1%
VALUE

5,899 Miles of gas transmission and hazardous liquid pipelines



3.1%
TONNAGE

17.9%
VALUE

Includes shipments by multiple modes and by parcel delivery services, U.S. Postal Service, or couriers (capped at 150 pounds). This category is not limited to containerized or trailer-on-flatcar shipments.

FLORIDA COMMODITY FLOWS (2018-2045)



IMPORTS



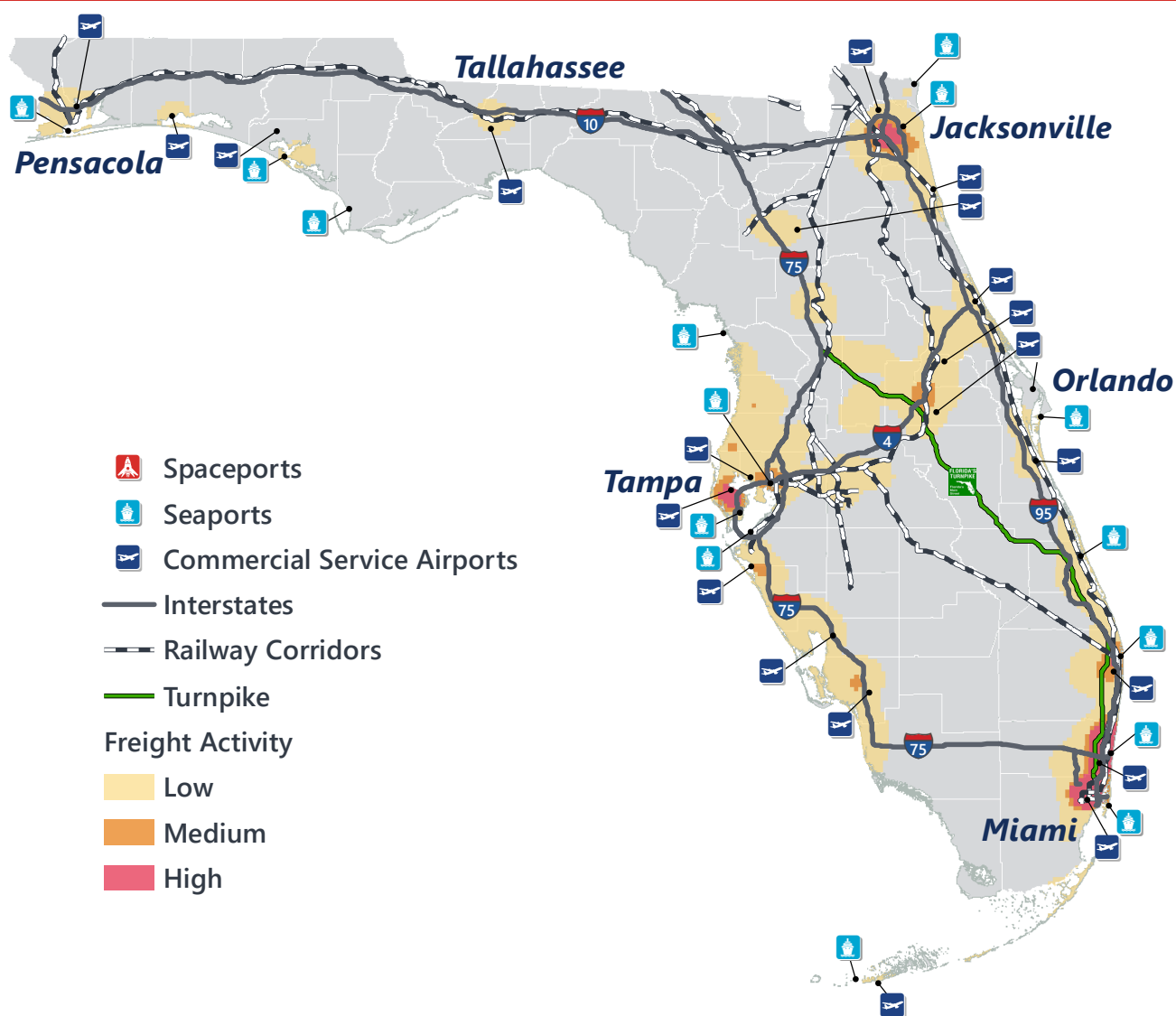
WITHIN FL



EXPORTS

| | 2018 | 2045 | 2018 | 2045 | 2018 | 2045 |
|---------|--------|--------|--------|--------|--------|--------|
| TONNAGE | 142M | 190M | 656M | 761M | 57M | 103M |
| VALUE | \$321B | \$690B | \$402B | \$844B | \$180B | \$606B |

Freight Analysis Framework (FAF) 4.5.1.



Rickey Fitzgerald
 Manager, Freight & Multimodal Operations
 Florida Department of Transportation
 605 Suwannee Street, Tallahassee, FL 32399
 Rickey.Fitzgerald@dot.state.fl.us
 850.414.4702