

# FREIGHT AND LOGISTICS OVERVIEW

FEBRUARY 2021

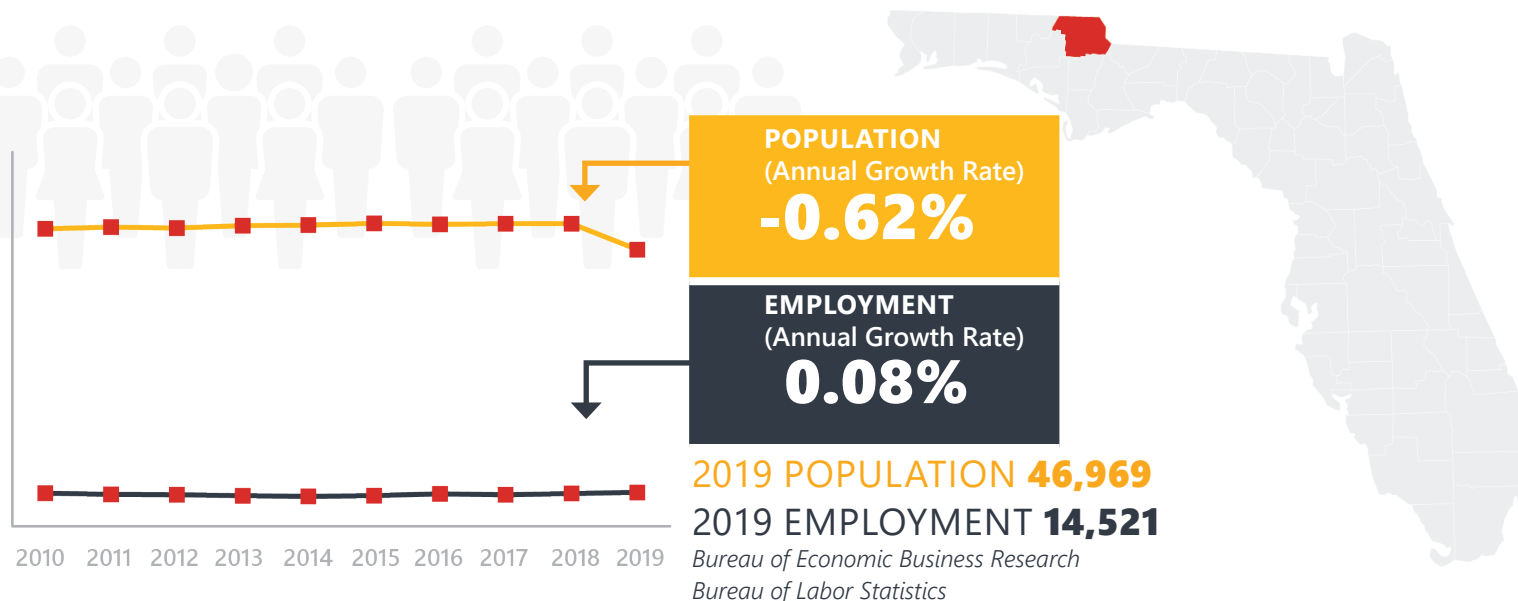
# JACKSON COUNTY



*Mission: The department will provide a safe transportation system that ensures the mobility of people and goods, enhances economic prosperity, and preserves the quality of our environment and communities.*

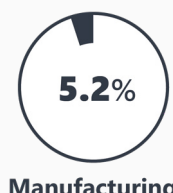
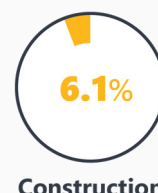
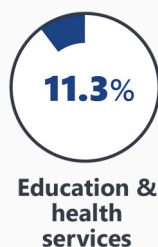
# JACKSON COUNTY HIGHLIGHTS

|                              |          |                     |          |
|------------------------------|----------|---------------------|----------|
| "THE CITY OF SOUTHERN CHARM" |          | AREA (SQ . MILES)   | 955      |
| COUNTY SEAT                  | MARIANNA | LARGEST CITY (SIZE) | MARIANNA |



## LARGEST INDUSTRY SECTORS BY EMPLOYMENT (2019)

Office of Economic and Demographic Research



## FASTEST GROWING INDUSTRIES (2010-2019)

|                                      |            |     |
|--------------------------------------|------------|-----|
| LEISURE AND HOSPITALITY              | JOBS ADDED | 309 |
| TRADE, TRANSPORTATION, AND UTILITIES |            | 245 |
| EDUCATION AND HEALTH SERVICES        |            | 199 |
| MANUFACTURING                        |            | 168 |
| CONSTRUCTION                         |            | 146 |

Bureau of Labor Statistics

## DID YOU KNOW?

Jackson County has more caves than any other county in the state of Florida.

The county ranks 1st in lumber and wood products exports in the state.

The county's Florida Caverns State Park is the state's only show cavern.



# COMMODITY FLOW HIGHLIGHTS



## IMPORTS

## WITHIN COUNTY

## EXPORTS

|          | 2018      | 2045      | 2018      | 2045      | 2018        | 2045        |
|----------|-----------|-----------|-----------|-----------|-------------|-------------|
| Tonnage: | 0.86 M    | 0.97 M    | 54.7 K    | 68.77 K   | 3.05 M      | 4.05 M      |
| Value:   | \$ 0.33 B | \$ 0.39 B | \$ 6.17 M | \$ 3.74 M | \$ 620.13 M | \$ 663.37 M |



### TOP COMMODITY *by Tonnage, 2018*



|                              |         |
|------------------------------|---------|
| Nonmetallic Minerals         | 262,338 |
| Lumber or Wood Products      | 253,622 |
| Petroleum or Coal Products   | 91,192  |
| Clay, Concrete, Glass, Stone | 87,274  |
| Waste or Scrap Materials     | 64,655  |

|                              |           |
|------------------------------|-----------|
| Nonmetallic Minerals         | 1,747,269 |
| Lumber or Wood Products      | 959,398   |
| Farm Products                | 195,195   |
| Clay, Concrete, Glass, Stone | 90,860    |
| Waste or Scrap Materials     | 28,935    |



### TOP COMMODITY *by Value, 2018*

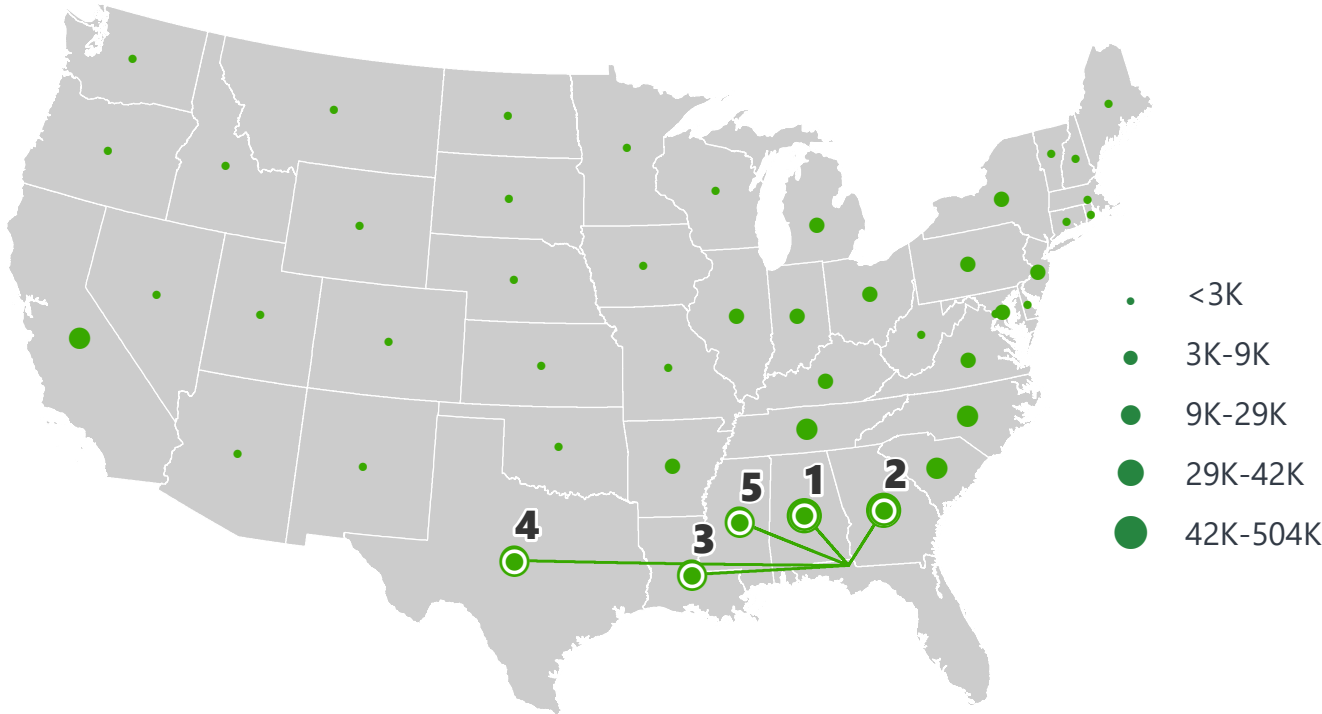


|  |               |
|--|---------------|
| Warehouse, Distribution Center and Drayage Movements | \$ 83,287,625 |
| Lumber or Wood Products                              | \$ 69,340,538 |
| Transportation Equipment                             | \$ 55,837,826 |
| Petroleum or Coal Products                           | \$ 50,914,389 |
| Waste or Scrap Materials                             | \$ 16,189,224 |

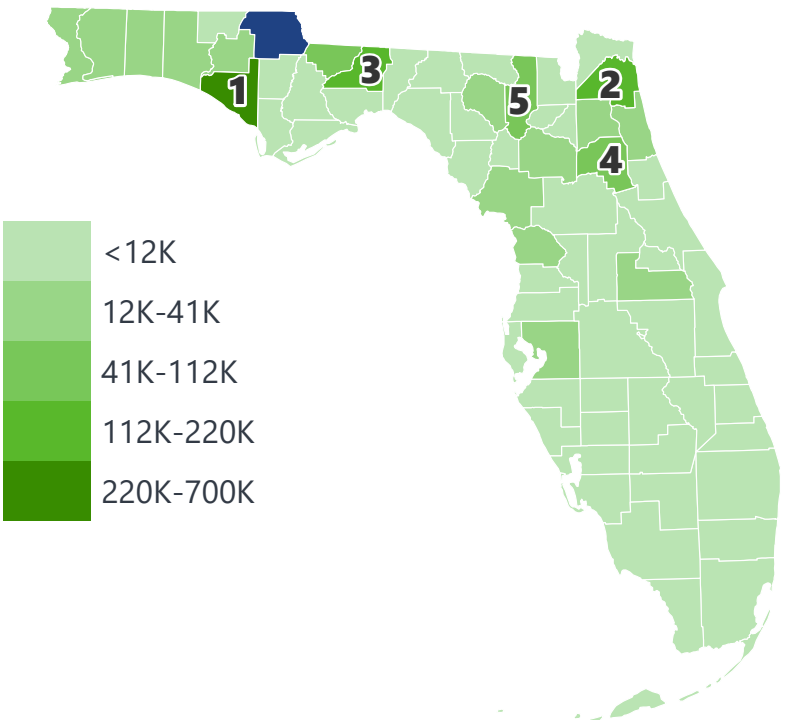
|  |                |
|--|----------------|
| Lumber or Wood Products                              | \$ 386,151,831 |
| Farm Products  | \$ 147,285,934 |
| Warehouse, Distribution Center and Drayage Movements | \$ 28,019,193  |
| Nonmetallic Minerals                                 | \$ 18,880,420  |
| Clay, Concrete, Glass, Stone                         | \$ 13,741,240  |

# JACKSON COUNTY EXPORTS AND IMPORTS

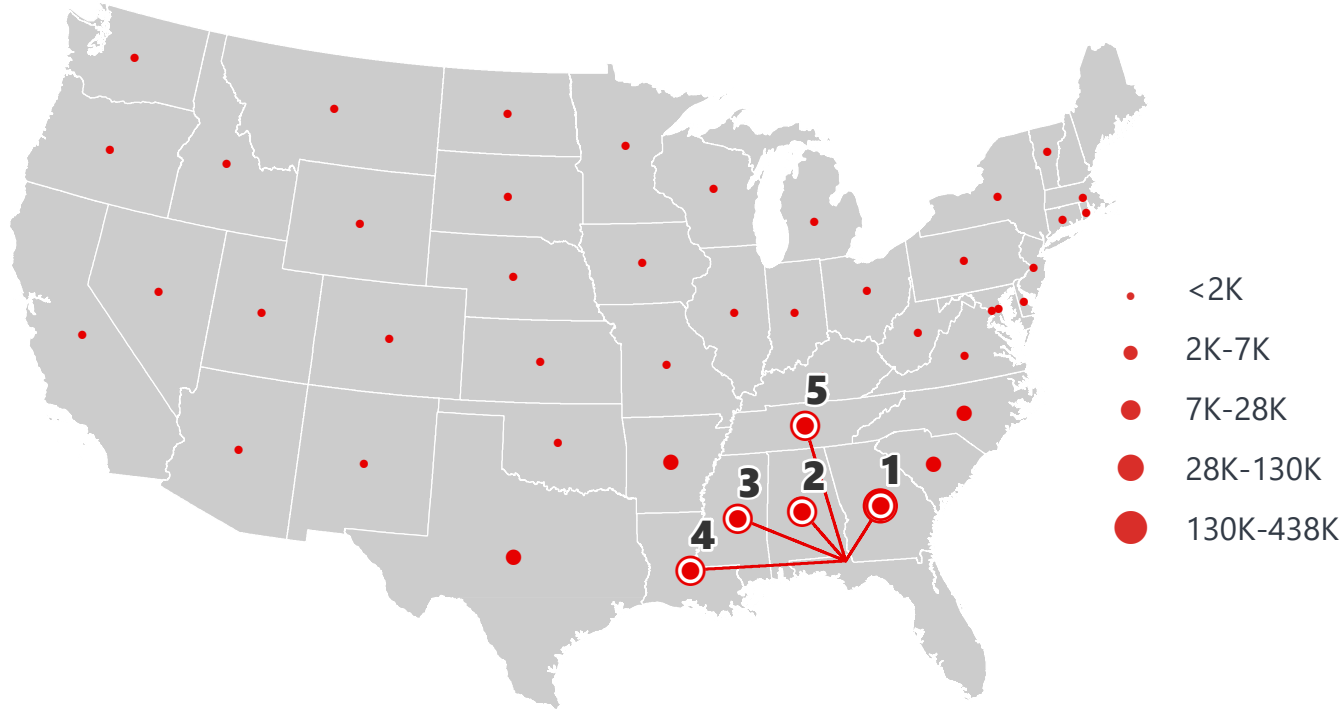
DOMESTIC EXPORTS (TONS)



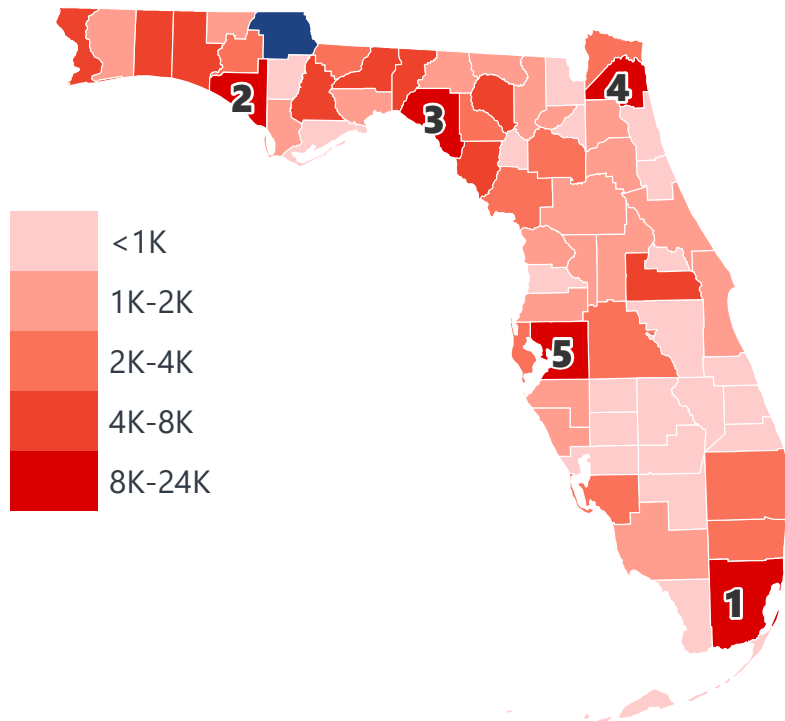
INTRASTATE EXPORTS (TONS)



DOMESTIC IMPORTS (TONS)



INTRASTATE IMPORTS (TONS)



## DOMESTIC EXPORTS (TONNAGE)

|   |             |         |
|---|-------------|---------|
| 1 | Alabama     | 503,379 |
| 2 | Georgia     | 424,211 |
| 3 | Louisiana   | 41,246  |
| 4 | Texas       | 39,766  |
| 5 | Mississippi | 35,028  |

## INTRASTATE EXPORTS (TONNAGE)

|   |          |         |
|---|----------|---------|
| 1 | Bay      | 698,447 |
| 2 | Duval    | 219,430 |
| 3 | Leon     | 149,677 |
| 4 | Putnam   | 111,904 |
| 5 | Columbia | 83,189  |

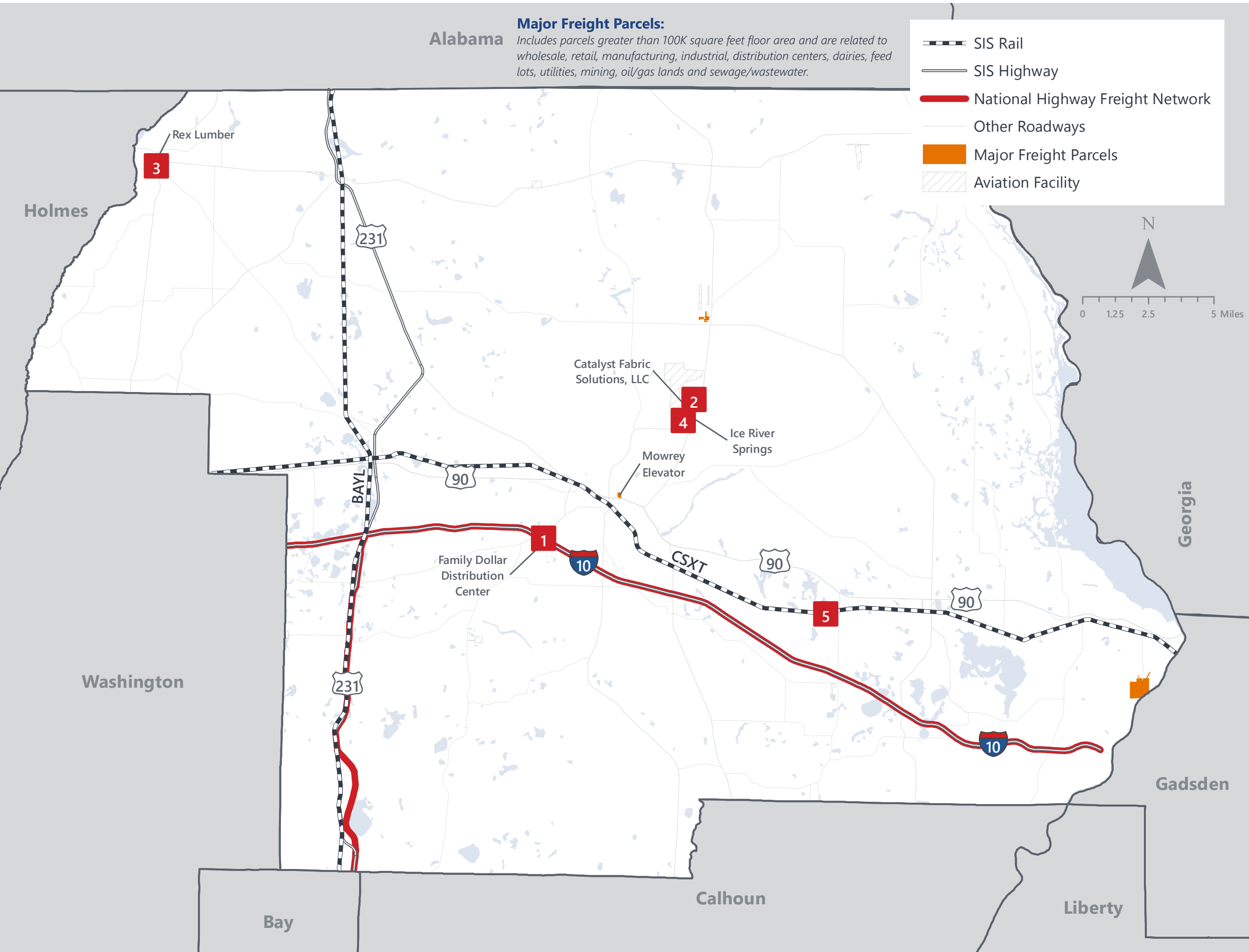
## DOMESTIC IMPORTS (TONNAGE)

|   |             |         |
|---|-------------|---------|
| 1 | Georgia     | 437,363 |
| 2 | Alabama     | 129,451 |
| 3 | Mississippi | 28,602  |
| 4 | Louisiana   | 18,284  |
| 5 | Tennessee   | 7,257   |

## INTRASTATE IMPORTS (TONNAGE)

|   |              |        |
|---|--------------|--------|
| 1 | Miami-Dade   | 23,424 |
| 2 | Bay          | 13,656 |
| 3 | Taylor       | 12,202 |
| 4 | Duval        | 11,897 |
| 5 | Hillsborough | 10,939 |

# JACKSON COUNTY FREIGHT INFRASTRUCTURE



## LARGEST FREIGHT EMPLOYERS

|   |                            |         |
|---|----------------------------|---------|
| 1 | Marianna DC                | 400-500 |
| 2 | Catalyst Fabrics Solutions | 100-200 |
| 3 | Rex Lumber                 | 100-200 |
| 4 | Ice Springs                | 100-200 |
| 5 | Spanish Trail Lumber       | 100-200 |

## MAJOR FREIGHT LAND USES

### 5.4 M SQ.FT Floor Area

|        |                                       |
|--------|---------------------------------------|
| 33.81% | Warehousing and distribution centers  |
| 21.83% | Other food processing                 |
| 18.77% | Light manufacturing                   |
| 9.16%  | Lumber yards, sawmills, planing mills |
| 7.54%  | Utilities                             |

### 119.7 M SQ.FT LAND AREA

|        |  |
|--------|--|
| 21.75% | Other food processing                                |
| 19.13% | Sewage disposal and waste land                       |
| 17.74% | Utilities  |
| 14.51% | Minerals processing and construction material plants |
| 11.34% | Warehousing and distribution centers                 |

Florida Department of Economic Opportunity, 2018  
Florida Department of Revenue, 2019



# MAJOR COUNTY COMMODITIES



## IMPORTS



### TOP COMMODITY by Tonnage, 2018 (relative to Florida)

| FL Rank | Commodity                    | % Florida Share |
|---------|------------------------------|-----------------|
| 16      | Forest Products              | 2.20%           |
| 15      | Lumber or Wood Products      | 1.89%           |
| 34      | Waste or Scrap Materials     | 0.41%           |
| 47      | Nonmetallic Minerals         | 0.22%           |
| 49      | Clay, Concrete, Glass, Stone | 0.21%           |

## EXPORTS



| FL Rank | Commodity               | % Florida Share |
|---------|-------------------------|-----------------|
| 1       | Lumber or Wood Products | 10.30%          |
| 20      | Nonmetallic Minerals    | 1.69%           |
| 19      | Farm Products           | 1.40%           |
| 20      | Forest Products         | 1.04%           |
| 21      | Textile Mill Products   | 0.22%           |

### TOP COMMODITY by Value, 2018 (relative to Florida)

| FL Rank | Commodity                    | % Florida Share |
|---------|------------------------------|-----------------|
| 16      | Forest Products              | 1.98%           |
| 25      | Lumber or Wood Products      | 0.88%           |
| 33      | Waste or Scrap Materials     | 0.41%           |
| 47      | Nonmetallic Minerals         | 0.18%           |
| 49      | Clay, Concrete, Glass, Stone | 0.14%           |

| FL Rank | Commodity                    | % Florida Share |
|---------|------------------------------|-----------------|
| 2       | Lumber or Wood Products      | 7.71%           |
| 16      | Farm Products                | 1.65%           |
| 20      | Nonmetallic Minerals         | 1.24%           |
| 23      | Forest Products              | 1.05%           |
| 44      | Clay, Concrete, Glass, Stone | 0.18%           |





TRANSPORTATION STATISTICS AND FREIGHT MOVEMENT BY MODE



390 K | Daily Truck Miles Traveled

1.17 | Planning Time Index

1,737 | Public Roadway Mileage



58 Miles | Distance from closest seaport  
(Port of Panama City)



39.25 | Class I Mainline Miles (CSX)

- | Class II Mainline Miles

30.31 | Class III Mainline Miles (BAYL)



60 Miles | Distance from closest airport  
(Tallahassee International Airport)

# FLORIDA HIGHLIGHTS

**3rd most populous** US State

**\$1T Gross** Domestic Product

**4th Largest** US Economy and **17th Largest** Economy in World

Nation's **3rd largest** workforce

**1 in 5 U.S. exporters** are located in Florida

**\$153B** International Trade

**1.76M jobs supported** by Trade, Transportation and Utilities industry sector

**1.25M jobs supported** by Leisure and Hospitality industry sector

**131M** annual visitors

CAPITAL **TALLAHASSEE**

AREA  
(SQ. MILES) **53,624**

LARGEST  
CITY (SIZE) **JACKSONVILLE**

POPULATION  
(2019) **21,208,589**

ANNUAL POP  
GROWTH RATE  
(2010-2019) **1.4%**

EMPLOYMENT  
(2019) **8,884,065**

ANNUAL EMP  
GROWTH RATE  
(2010-2019) **2.8%**

*Bureau of Economic Business Research,  
Bureau of Labor Statistics*

## DOMESTIC IMPORTS

|          |                   |       |
|----------|-------------------|-------|
| <b>1</b> | <b>GEORGIA</b>    | \$44B |
| <b>2</b> | <b>CALIFORNIA</b> | \$29B |
| <b>3</b> | <b>TEXAS</b>      | \$26B |
| <b>4</b> | <b>ALABAMA</b>    | \$18B |
| <b>5</b> | <b>ILLINOIS</b>   | \$18B |

## DOMESTIC EXPORTS

|          |                       |       |
|----------|-----------------------|-------|
| <b>1</b> | <b>GEORGIA</b>        | \$22B |
| <b>2</b> | <b>TEXAS</b>          | \$19B |
| <b>3</b> | <b>CALIFORNIA</b>     | \$15B |
| <b>4</b> | <b>NORTH CAROLINA</b> | \$12B |
| <b>5</b> | <b>NEW YORK</b>       | \$10B |

## INTERNATIONAL IMPORTS

|          |               |        |
|----------|---------------|--------|
| <b>1</b> | <b>CHINA</b>  | \$9.5B |
| <b>2</b> | <b>JAPAN</b>  | \$6.5B |
| <b>3</b> | <b>BRAZIL</b> | \$6.4B |
| <b>4</b> | <b>MEXICO</b> | \$4.5B |
| <b>5</b> | <b>CHILE</b>  | \$3.7B |

## INTERNATIONAL EXPORTS

|          |                           |         |
|----------|---------------------------|---------|
| <b>1</b> | <b>BRAZIL</b>             | \$13.4B |
| <b>2</b> | <b>COLOMBIA</b>           | \$4.2B  |
| <b>3</b> | <b>ARGENTINA</b>          | \$3.6B  |
| <b>4</b> | <b>DOMINICAN REPUBLIC</b> | \$3.1B  |
| <b>5</b> | <b>CHILE</b>              | \$3B    |



# TRANSPORTATION STATISTICS AND FREIGHT MOVEMENT BY MODE



**83%**  
TONNAGE

**71%**  
VALUE

**123,104** Public roadway mileage  
**12,130** State Highway System (SHS) mileage  
**30.7M** Daily truck miles traveled on SHS  
**98** Public truck parking facilities



**3.5%**  
TONNAGE

**2.9%**  
VALUE

**15** Deepwater seaports  
**4.1M** Twenty-foot equivalent units (TEUs)  
**16.8M** Annual cruise passengers



**6.7%**  
TONNAGE

**1.8%**  
VALUE

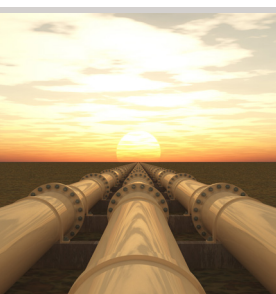
**2,936** Miles of roads  
**6.9M** Annual rail passenger traffic



**0.1%**  
TONNAGE

**5.4%**  
VALUE

**129** Public use airports  
**20** Commercial service airports  
**2** Active spaceports



**3.6%**  
TONNAGE

**1%**  
VALUE

**5,899** Miles of gas transmission and hazardous liquid pipelines



**3.1%**  
TONNAGE

**17.9%**  
VALUE

Includes shipments by multiple modes and by parcel delivery services, U.S. Postal Service, or couriers (capped at 150 pounds). This category is not limited to containerized or trailer-on-flatcar shipments.

# FLORIDA COMMODITY FLOWS (2018-2045)



IMPORTS



WITHIN FL



EXPORTS

|         | 2018   | 2045   | 2018   | 2045   | 2018   | 2045   |
|---------|--------|--------|--------|--------|--------|--------|
| TONNAGE | 142M   | 190M   | 656M   | 761M   | 57M    | 103M   |
| VALUE   | \$321B | \$690B | \$402B | \$844B | \$180B | \$606B |

Freight Analysis Framework (FAF) 4.5.1.



**Rickey Fitzgerald**  
 Manager, Freight & Multimodal Operations  
 Florida Department of Transportation  
 605 Suwannee Street, Tallahassee, FL 32399  
 Rickey.Fitzgerald@dot.state.fl.us  
 850.414.4702