

FREIGHT AND LOGISTICS OVERVIEW

FEBRUARY 2021

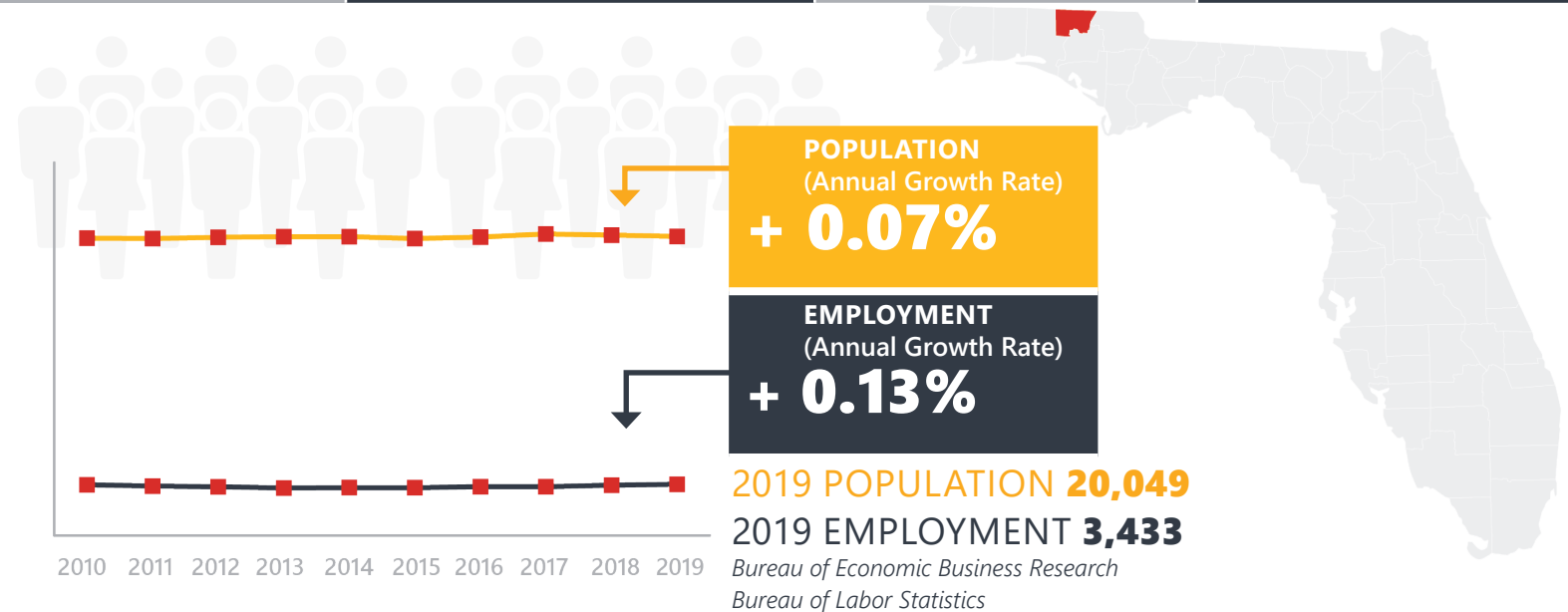
HOLMES COUNTY



Mission: The department will provide a safe transportation system that ensures the mobility of people and goods, enhances economic prosperity, and preserves the quality of our environment and communities.

HOLMES COUNTY HIGHLIGHTS

"THE CROSSROADS OF NORTHWEST FLORIDA"		AREA (SQ . MILES)	489
COUNTY SEAT	BONIFAY	LARGEST CITY (SIZE)	BONIFAY



LARGEST INDUSTRY SECTORS BY EMPLOYMENT (2019)

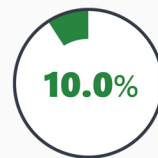
Office of Economic and Demographic Research



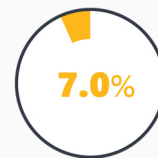
Education & health services



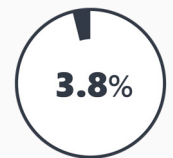
Trade, transportation & utilities



Construction



Leisure & hospitality



Professional & business services

FASTEST GROWING INDUSTRIES (2010-2019)

CONSTRUCTION	JOBS ADDED	142
LEISURE AND HOSPITALITY		45
PROFESSIONAL AND BUSINESS SERVICES		24

Bureau of Labor Statistics

DID YOU KNOW?

Holmes is centrally located between several installations: Tyndall and Eglin air force bases, Naval Surface Warfare center, Pensacola Naval Air Station, Forts Rucker and Benning army installations.

The county is home to the Northwest Florida Championship Rodeo, which is held the first full weekend in October and attracts approximately 20,000 people each year.

The Cypress Cattle & Produce Company in Ponce de Leon, FL has over 103 years of farm business, promoting agritourism like the fall corn maze and pumpkin patch event.

COMMODITY FLOW HIGHLIGHTS



IMPORTS

WITHIN COUNTY

EXPORTS

2018

2045

2018

2045

2018

2045

Tonnage:	143.03 K	186.62 K	156	682	132.83 K	245.45 K
Value:	\$ 81.15 M	\$ 126.89 M	\$ 87.75 K	\$ 239.02 K	\$ 72.64 M	\$ 148.7 M



TOP COMMODITY *by Tonnage, 2018*



Nonmetallic Minerals	40,316
Petroleum or Coal Products	28,106
Warehouse, Distribution Center and Drayage Movements	20,999
Clay, Concrete, Glass, Stone	20,919
Waste or Scrap Materials	11,749

Farm Products	66,533
Clay, Concrete, Glass, Stone	23,520
Lumber or Wood Products	22,828
Waste or Scrap Materials	16,009
Fabricated Metal Products	2,300



TOP COMMODITY *by Value, 2018*

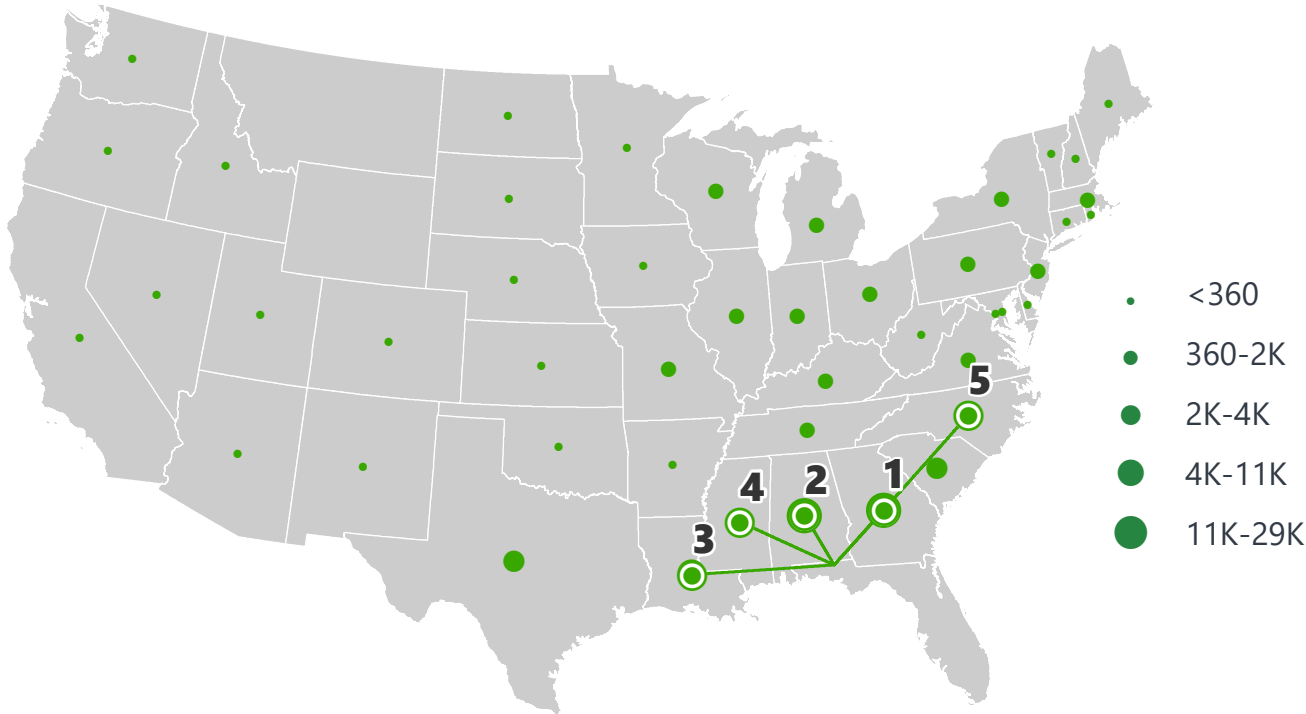


Warehouse, Distribution Center and Drayage Movements	\$ 25,738,022
Petroleum or Coal Products	\$ 15,626,447
Transportation Equipment	\$ 8,479,523
Food or Kindred Products	\$ 5,733,690
Farm Products	\$ 5,574,902

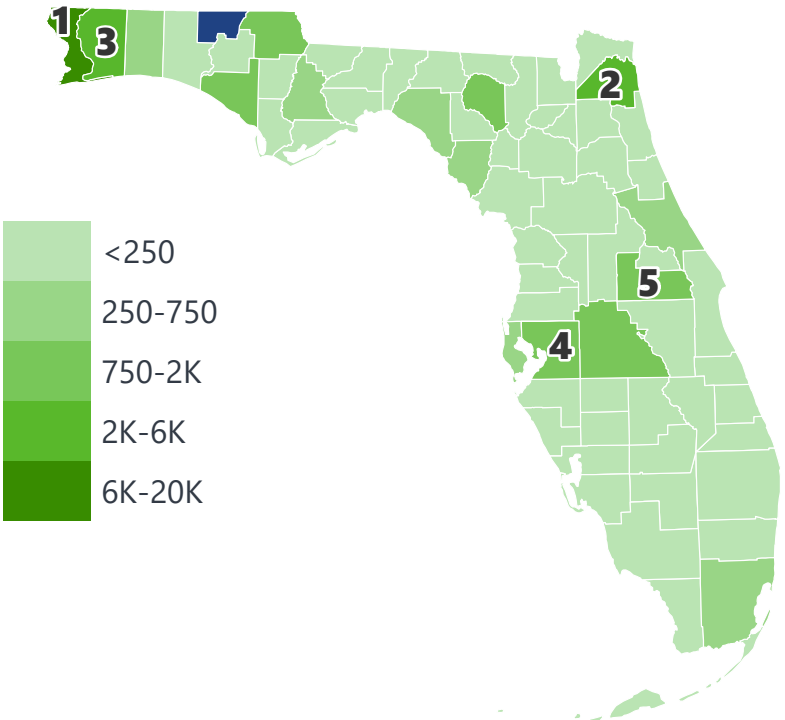
Farm Products	\$ 40,768,119
Lumber or Wood Products	\$ 8,565,903
Fabricated Metal Products	\$ 8,547,224
Machinery	\$ 7,136,480
Waste or Scrap Materials	\$ 3,877,835

HOLMES COUNTY EXPORTS AND IMPORTS

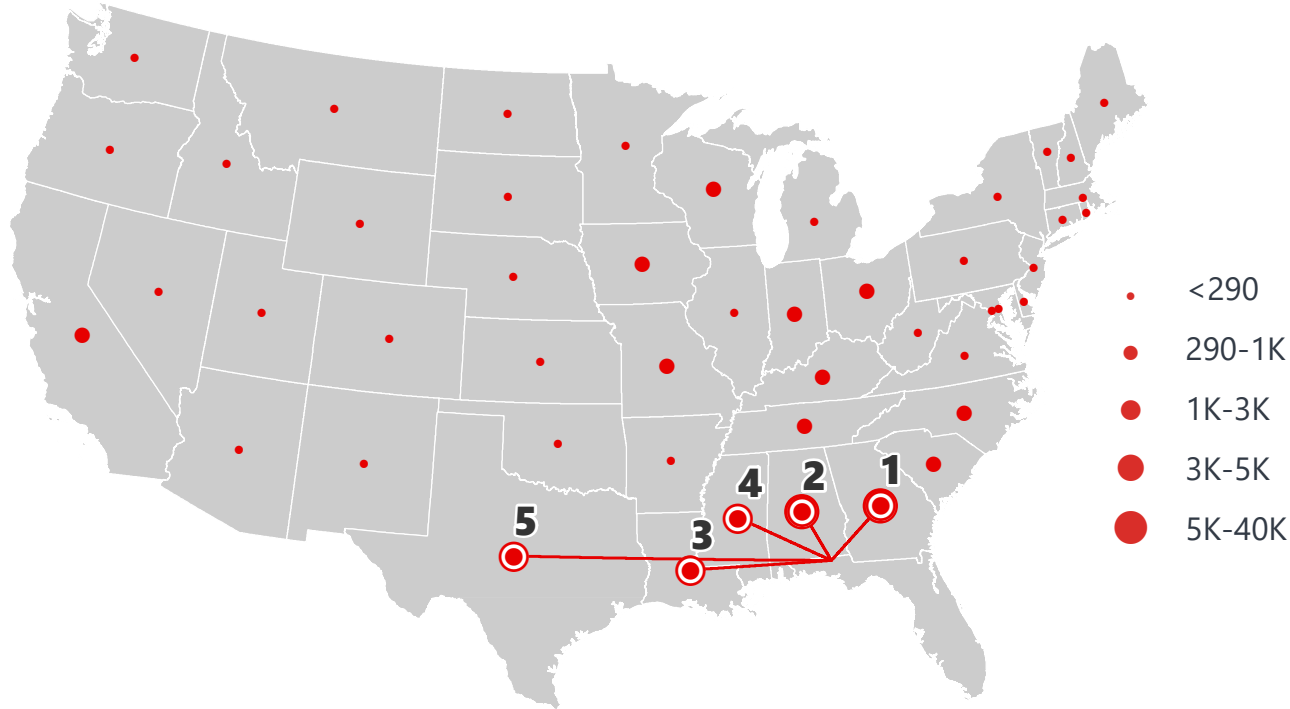
DOMESTIC EXPORTS (TONS)



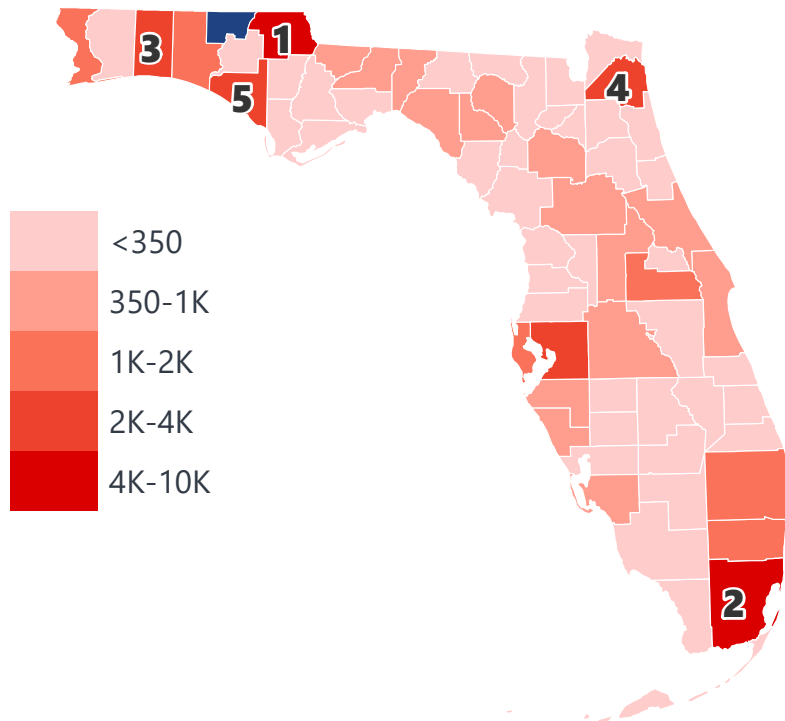
INTRASTATE EXPORTS (TONS)



DOMESTIC IMPORTS (TONS)



INTRASTATE IMPORTS (TONS)



DOMESTIC EXPORTS (TONNAGE)

1	Georgia	28,537
2	Alabama	25,273
3	Louisiana	11,370
4	Mississippi	4,020
5	North Carolina	2,844

INTRASTATE EXPORTS (TONNAGE)

1	Escambia	19,573
2	Duval	5,584
3	Santa Rosa	5,016
4	Hillsborough	1,528
5	Orange	1,526

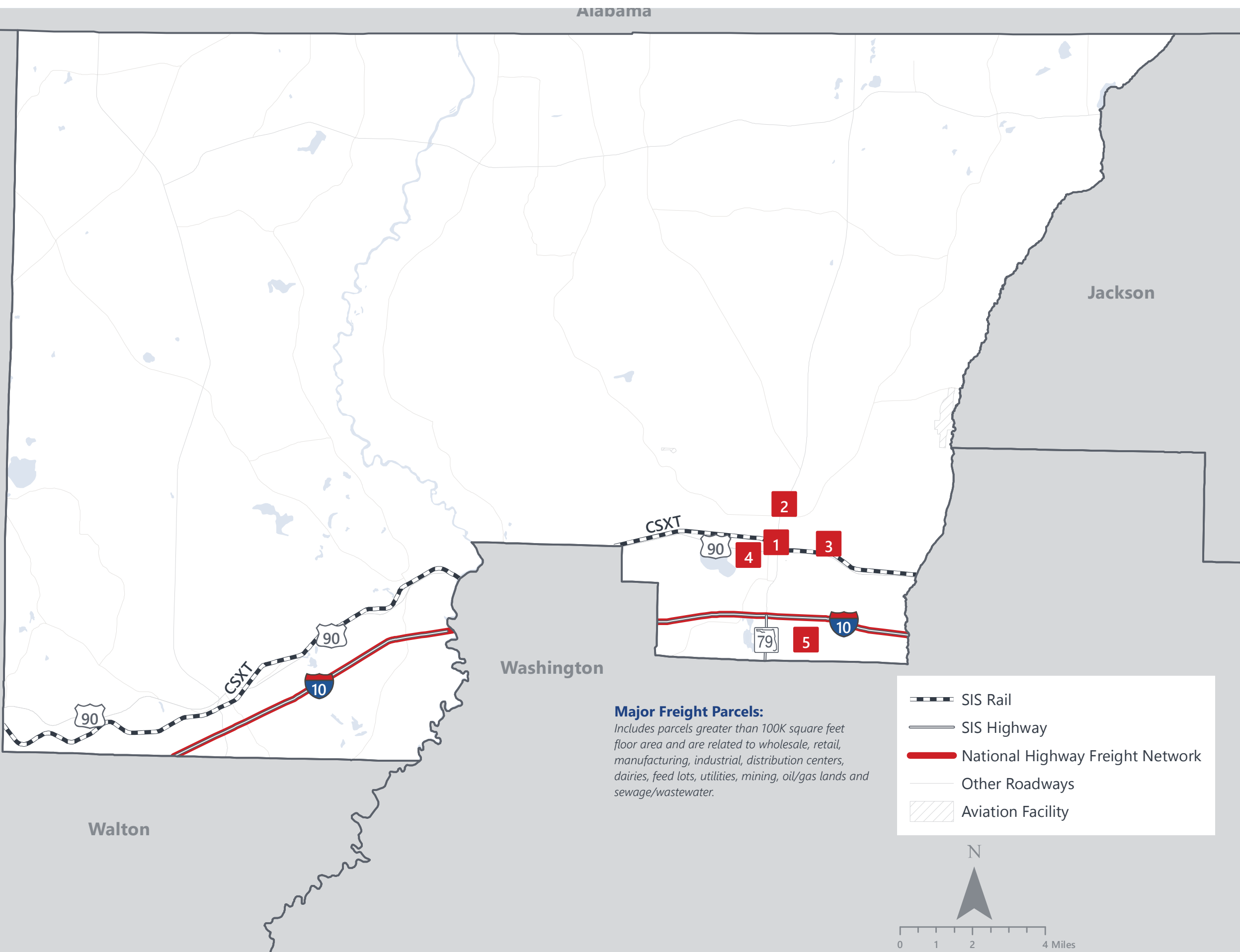
DOMESTIC IMPORTS (TONNAGE)

1	Georgia	39,721
2	Alabama	32,476
3	Louisiana	5,233
4	Mississippi	2,527
5	Texas	2,409

INTRASTATE IMPORTS (TONNAGE)

1	Jackson	9,476
2	Miami-Dade	8,129
3	Okaloosa	3,590
4	Duval	2,676
5	Bay	2,566

HOLMES COUNTY FREIGHT INFRASTRUCTURE



LARGEST FREIGHT EMPLOYERS

1	USPS	0-50
2	Holmes Tool & Eng.	0-50
3	Environmental Mfg & Supply	0-50
4	Parts Central	0-50
5	Arnold Lumber Co.	0-50

MAJOR FREIGHT LAND USES

0.3 M SQ.FT Floor Area

41.72%	Light manufacturing
20.76%	Warehousing and distribution centers
15.98%	Heavy industrial
9.96%	Utilities
2.81%	Airports, bus terminals and marine terminals

58.5 M SQ.FT LAND AREA

27.70%	Dairies, feed lots
25.04%	Utilities
22.31%	Airports, bus terminals and marine terminals
13.06%	Sewage disposal and waste land
6.04%	Lumber yards, sawmills, planing mills

Florida Department of Economic Opportunity, 2018
Florida Department of Revenue, 2019

MAJOR COUNTY COMMODITIES



IMPORTS



TOP COMMODITY by Tonnage, 2018 (relative to Florida)

FL Rank	Commodity	% Florida Share
40	Waste or Scrap Materials	0.07%
58	Clay, Concrete, Glass, Stone	0.05%
58	Warehouse, Distribution Center and Drayage Movements	0.05%
62	Lumber or Wood Products	0.04%
58	Petroleum or Coal Products	0.04%

EXPORTS



FL Rank	Commodity	% Florida Share
32	Farm Products	0.48%
55	Lumber or Wood Products	0.25%
34	Fabricated Metal Products	0.15%
33	Machinery	0.09%
53	Waste or Scrap Materials	0.06%

TOP COMMODITY by Value, 2018 (relative to Florida)

FL Rank	Commodity	% Florida Share
39	Waste or Scrap Materials	0.07%
51	Farm Products	0.06%
42	Tobacco Products	0.04%
58	Petroleum or Coal Products	0.04%
57	Clay, Concrete, Glass, Stone	0.04%

FL Rank	Commodity	% Florida Share
33	Farm Products	0.46%
52	Lumber or Wood Products	0.17%
34	Fabricated Metal Products	0.16%
34	Machinery	0.07%
53	Waste or Scrap Materials	0.06%



TRANSPORTATION STATISTICS AND FREIGHT MOVEMENT BY MODE



132 K | Daily Truck Miles Traveled

1.16 | Planning Time Index

938 | Public Roadway Mileage



60 Miles | Distance from closest seaport
(Port of Panama City)



23.22 | Class I Mainline Miles (CSX)

- Class II Mainline Miles
- Class III Mainline Miles



55 Miles | Distance from closest airport
(Northwest Florida Beaches International Airport)

FLORIDA HIGHLIGHTS

3rd most populous US State

\$1T Gross Domestic Product

4th Largest US Economy and **17th Largest** Economy in World

Nation's **3rd largest** workforce

1 in 5 U.S. exporters are located in Florida

\$153B International Trade

1.76M jobs supported by Trade, Transportation and Utilities industry sector

1.25M jobs supported by Leisure and Hospitality industry sector

131M annual visitors

CAPITAL **TALLAHASSEE**

AREA (SQ. MILES) **53,624**

LARGEST CITY (SIZE) **JACKSONVILLE**

POPULATION (2019) **21,208,589**

ANNUAL POP GROWTH RATE (2010-2019) **1.4%**

EMPLOYMENT (2019) **8,884,065**

ANNUAL EMP GROWTH RATE (2010-2019) **2.8%**

*Bureau of Economic Business Research,
Bureau of Labor Statistics*

DOMESTIC IMPORTS

1	GEORGIA	\$44B
2	CALIFORNIA	\$29B
3	TEXAS	\$26B
4	ALABAMA	\$18B
5	ILLINOIS	\$18B

DOMESTIC EXPORTS

1	GEORGIA	\$22B
2	TEXAS	\$19B
3	CALIFORNIA	\$15B
4	NORTH CAROLINA	\$12B
5	NEW YORK	\$10B

INTERNATIONAL IMPORTS

1	CHINA	\$9.5B
2	JAPAN	\$6.5B
3	BRAZIL	\$6.4B
4	MEXICO	\$4.5B
5	CHILE	\$3.7B

INTERNATIONAL EXPORTS

1	BRAZIL	\$13.4B
2	COLOMBIA	\$4.2B
3	ARGENTINA	\$3.6B
4	DOMINICAN REPUBLIC	\$3.1B
5	CHILE	\$3B

TRANSPORTATION STATISTICS AND FREIGHT MOVEMENT BY MODE



83%
TONNAGE

71%
VALUE

123,104 Public roadway mileage
12,130 State Highway System (SHS) mileage
30.7M Daily truck miles traveled on SHS
98 Public truck parking facilities



3.5%
TONNAGE

2.9%
VALUE

15 Deepwater seaports
4.1M Twenty-foot equivalent units (TEUs)
16.8M Annual cruise passengers



6.7%
TONNAGE

1.8%
VALUE

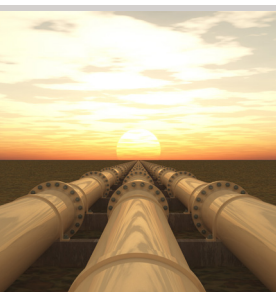
2,936 Miles of roads
6.9M Annual rail passenger traffic



0.1%
TONNAGE

5.4%
VALUE

129 Public use airports
20 Commercial service airports
2 Active spaceports



3.6%
TONNAGE

1%
VALUE

5,899 Miles of gas transmission and hazardous liquid pipelines



3.1%
TONNAGE

17.9%
VALUE

Includes shipments by multiple modes and by parcel delivery services, U.S. Postal Service, or couriers (capped at 150 pounds). This category is not limited to containerized or trailer-on-flatcar shipments.

FLORIDA COMMODITY FLOWS (2018-2045)



IMPORTS



WITHIN FL



EXPORTS

	2018	2045	2018	2045	2018	2045
TONNAGE	142M	190M	656M	761M	57M	103M
VALUE	\$321B	\$690B	\$402B	\$844B	\$180B	\$606B

Freight Analysis Framework (FAF) 4.5.1.



Rickey Fitzgerald
Manager, Freight & Multimodal Operations
 Florida Department of Transportation
 605 Suwannee Street, Tallahassee, FL 32399
 Rickey.Fitzgerald@dot.state.fl.us
 850.414.4702