

FREIGHT AND LOGISTICS OVERVIEW

FEBRUARY 2021



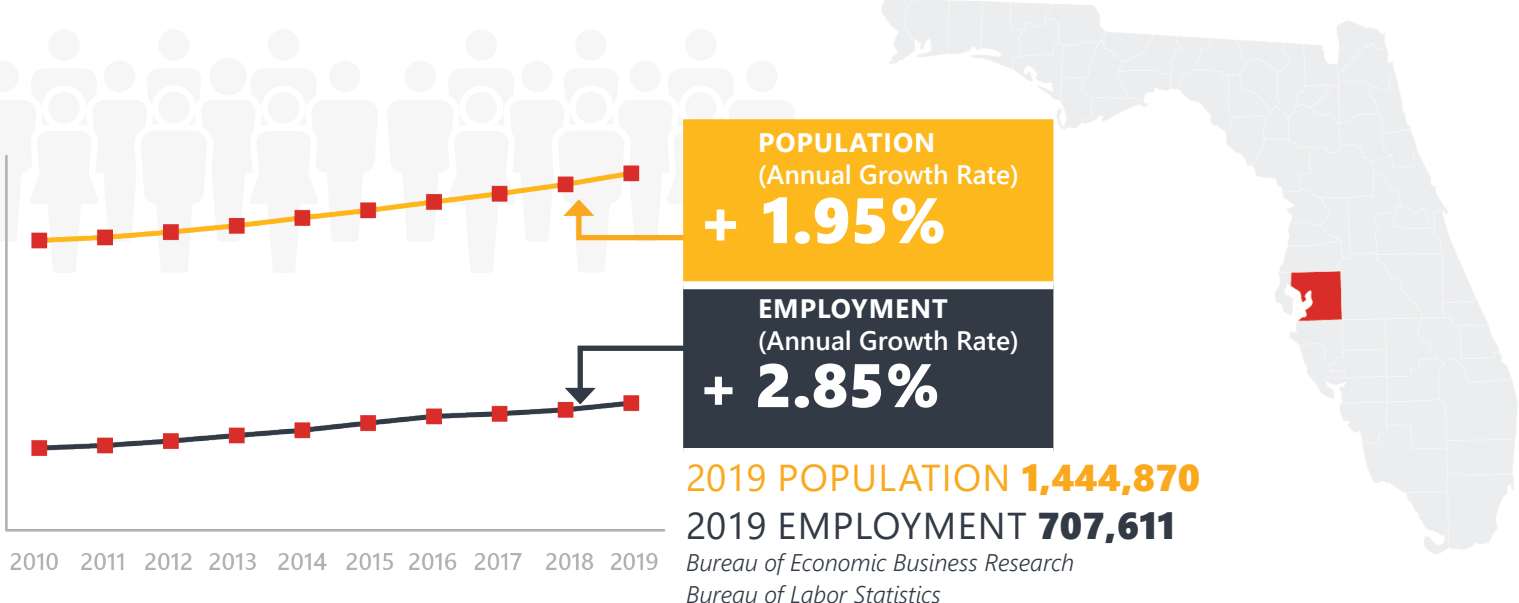
HILLSBOROUGH COUNTY



Mission: The department will provide a safe transportation system that ensures the mobility of people and goods, enhances economic prosperity, and preserves the quality of our environment and communities.

HILLSBOROUGH COUNTY HIGHLIGHTS

"THE BIG GUAVA"		AREA (SQ . MILES)	1,266
COUNTY SEAT	TAMPA	LARGEST CITY (SIZE)	TAMPA



LARGEST INDUSTRY SECTORS BY EMPLOYMENT (2019)

Office of Economic and Demographic Research



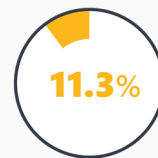
Professional & business services



Trade, transportation & utilities



Education & health services



Leisure & hospitality



Financial activities

FASTEST GROWING INDUSTRIES (2010-2019)

PROFESSIONAL AND BUSINESS SERVICES	JOBS ADDED	31,279
TRADE, TRANSPORTATION, AND UTILITIES		24,846
FINANCIAL ACTIVITIES		22,715
EDUCATION AND HEALTH SERVICES		22,061
LEISURE AND HOSPITALITY		21,952

Bureau of Labor Statistics

DID YOU KNOW?

Port Tampa Bay is by far Florida's largest and most diversified port, handling over 37 million tons of cargo per year.

The Tampa Bay/Orlando I-4 Corridor region is a huge local market and the fastest growing region of the state.

Tampa International Airport is served by over twenty major air carrier airlines, four regional airlines, and three air cargo carriers.

COMMODITY FLOW HIGHLIGHTS



IMPORTS

WITHIN COUNTY

EXPORTS

2018

2045

2018

2045

2018

2045

Tonnage:	55.73 M	64.09 M	10.05 M	23.14 M	28.3 M	38.05 M
Value:	\$ 55.49 B	\$ 79.25 B	\$ 7.7 B	\$ 13.11 B	\$ 37.06 B	\$ 63.99 B



TOP COMMODITY by Tonnage, 2018



Nonmetallic Minerals	20,757,988
Petroleum or Coal Products	15,620,885
Chemicals or Allied Products	4,889,934
Clay, Concrete, Glass, Stone	3,052,420
Warehouse, Distribution Center and Drayage Movements	2,782,051

Petroleum or Coal Products	10,055,702
Clay, Concrete, Glass, Stone	4,786,529
Chemicals or Allied Products	3,954,067
Waste or Scrap Materials	2,325,494
Nonmetallic Minerals	1,851,377



TOP COMMODITY by Value, 2018

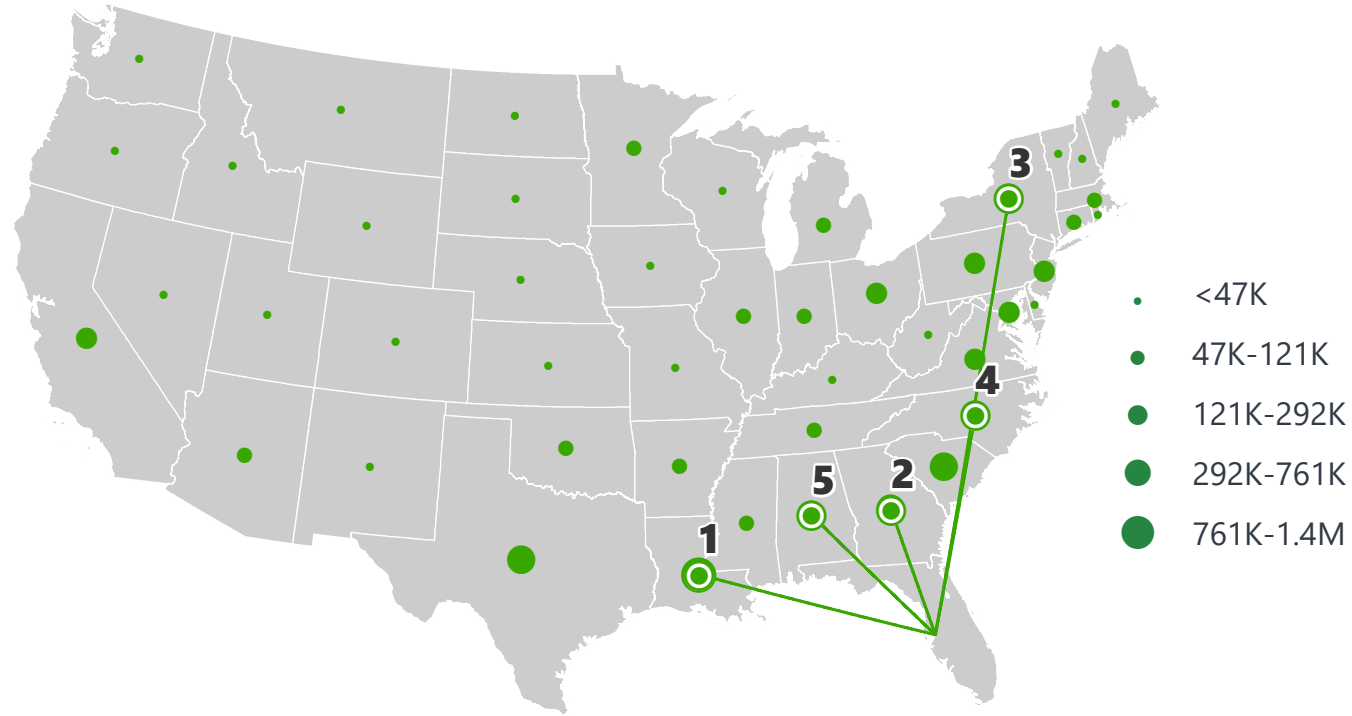


Petroleum or Coal Products	\$ 10,717,097,169
Transportation Equipment	\$ 6,632,501,369
Misc. Manufacturing Products	\$ 5,687,023,465
Electrical Equipment	\$ 5,334,099,209
Warehouse, Distribution Center and Drayage Movements	\$ 5,223,077,932

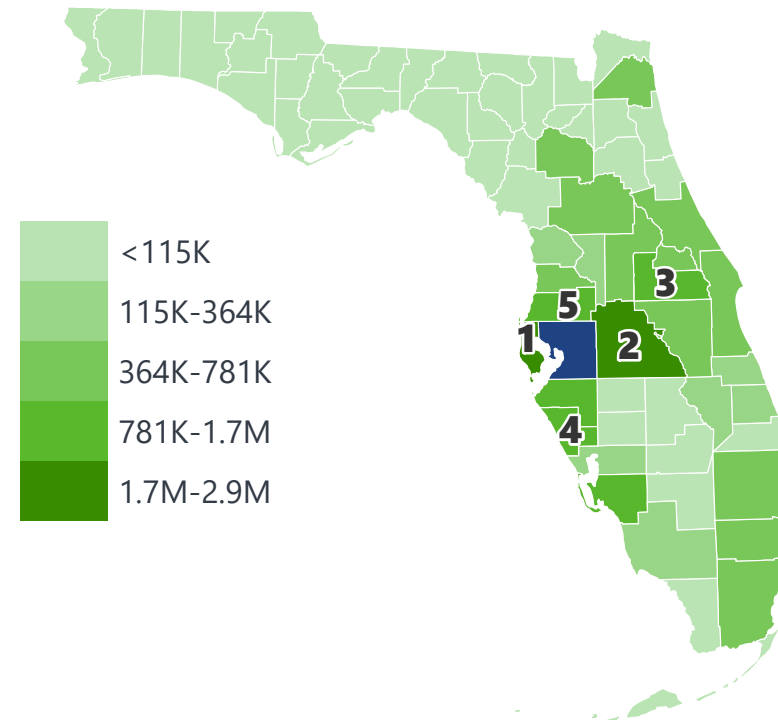
Misc. Manufacturing Products	\$ 7,858,390,136
Petroleum or Coal Products	\$ 5,599,984,505
Electrical Equipment	\$ 5,556,644,328
Warehouse, Distribution Center and Drayage Movements	\$ 4,222,426,951
Transportation Equipment	\$ 3,355,020,785

HILLSBOROUGH COUNTY EXPORTS AND IMPORTS

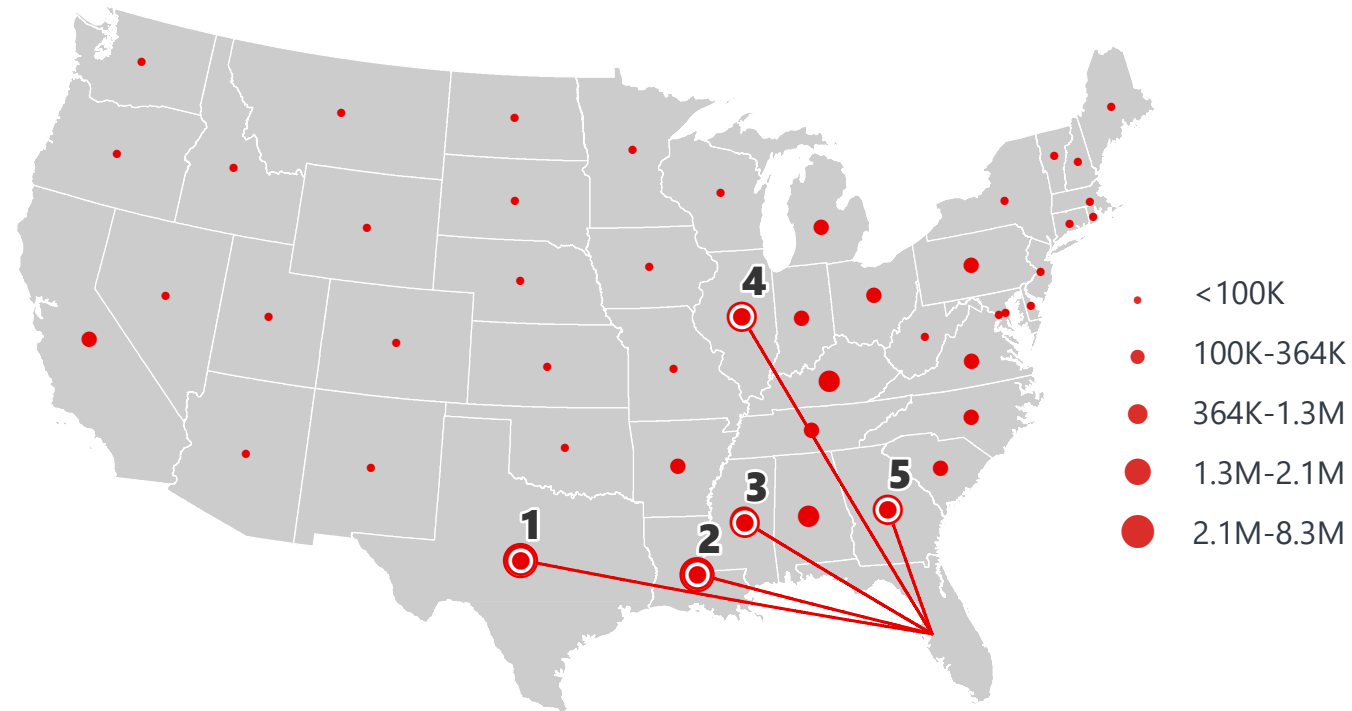
DOMESTIC EXPORTS (TONS)



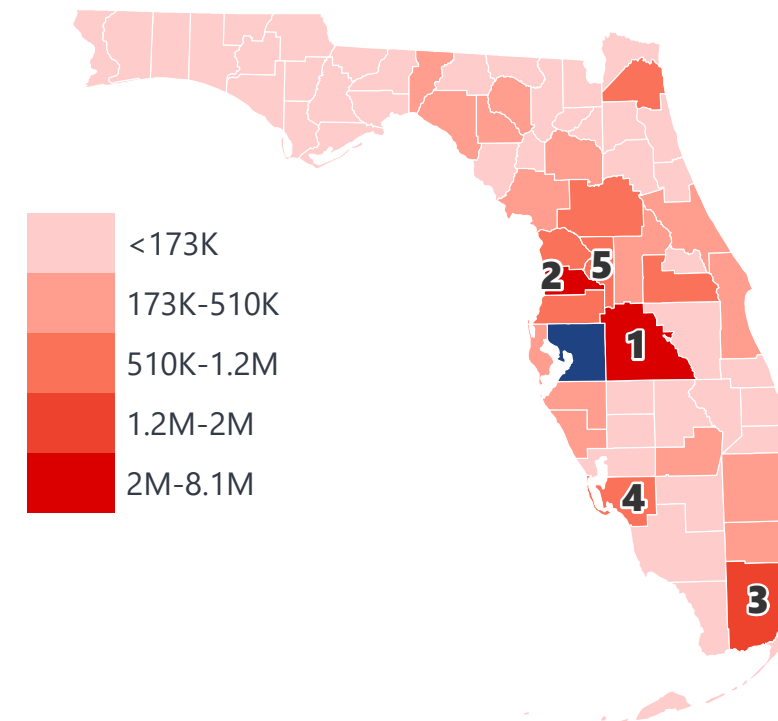
INTRASTATE EXPORTS (TONS)



DOMESTIC IMPORTS (TONS)



INTRASTATE IMPORTS (TONS)



DOMESTIC EXPORTS (TONNAGE)

1	Louisiana	1,384,732
2	Georgia	761,037
3	New York	514,839
4	North Carolina	501,412
5	Alabama	412,495

INTRASTATE EXPORTS (TONNAGE)

1	Pinellas	2,865,687
2	Polk	2,156,375
3	Orange	1,683,147
4	Sarasota	1,388,827
5	Pasco	1,176,980

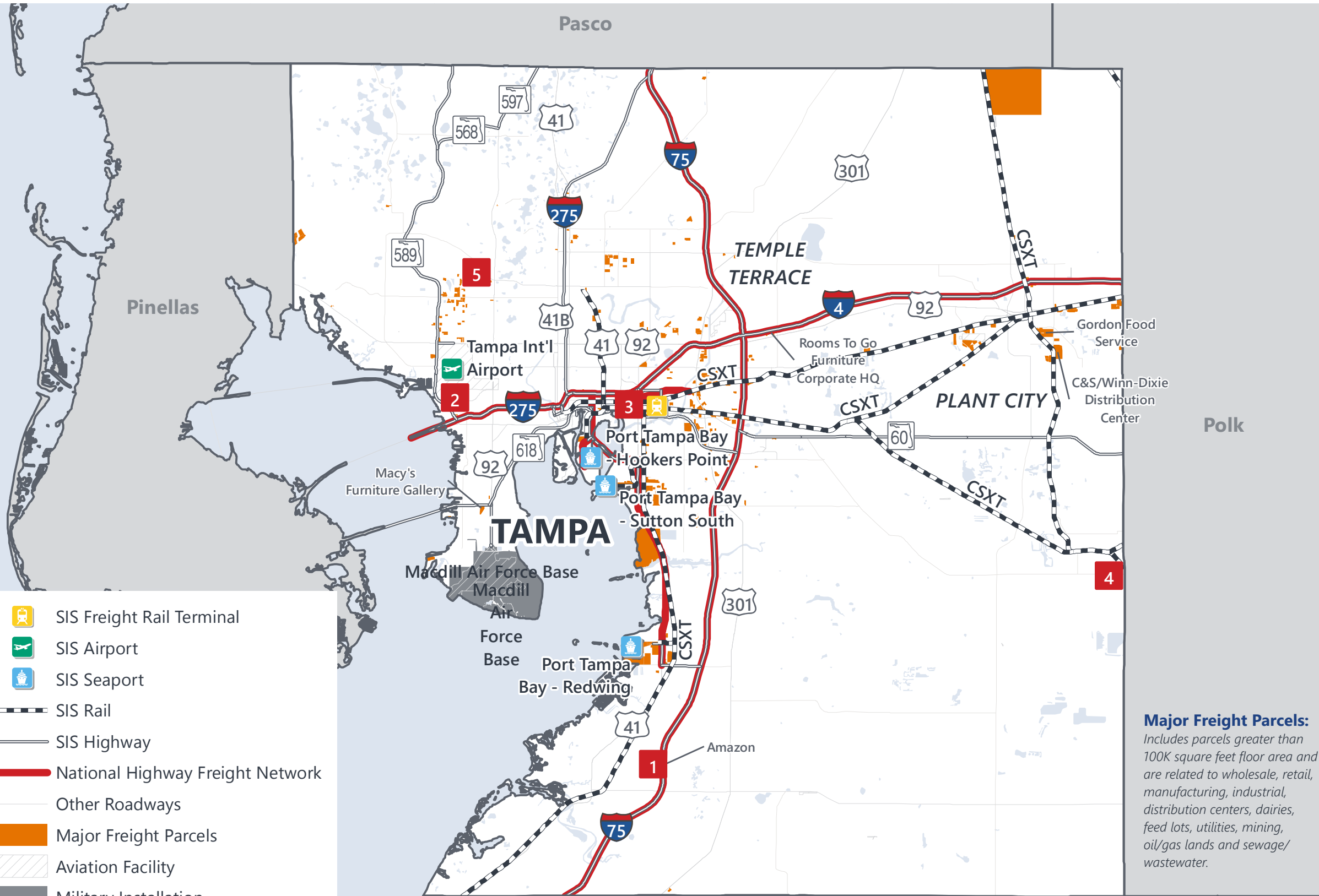
DOMESTIC IMPORTS (TONNAGE)

1	Texas	8,229,333
2	Louisiana	7,864,463
3	Mississippi	2,066,939
4	Illinois	1,254,737
5	Georgia	1,199,785

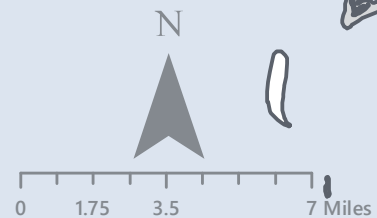
INTRASTATE IMPORTS (TONNAGE)

1	Polk	8,093,763
2	Hernando	4,751,865
3	Miami-Dade	1,999,111
4	Lee	1,192,477
5	Sumter	1,011,021

HILLSBOROUGH COUNTY FREIGHT INFRASTRUCTURE



- SIS Freight Rail Terminal
- SIS Airport
- SIS Seaport
- SIS Rail
- SIS Highway
- National Highway Freight Network
- Other Roadways
- Major Freight Parcels
- Aviation Facility
- Military Installation



LARGEST FREIGHT EMPLOYERS

1	Amazon	3K-4K
2	USPS	800-900
3	UPS	600-700
4	Mosaic Fertilizer	600-700
5	VF Imgewear	600-700

MAJOR FREIGHT LAND USES

139.9 M SQ.FT Floor Area

71.76%	Warehousing and distribution centers
11.03%	Light manufacturing
4.71%	Minerals processing and construction material plants
3.86%	Utilities
3.51%	Fruit, vegetable and meat packing plants

2.12 B SQ.FT LAND AREA

48.87%	Mining lands, petroleum lands, or gas lands
15.36%	Warehousing and distribution centers
13.95%	Minerals processing and construction material plants
6.13%	Utilities
5.43%	Sewage disposal and waste land

Major Freight Parcels:
Includes parcels greater than 100K square feet floor area and are related to wholesale, retail, manufacturing, industrial, distribution centers, dairies, feed lots, utilities, mining, oil/gas lands and sewage/wastewater.

Florida Department of Economic Opportunity, 2018
Florida Department of Revenue, 2019

MAJOR COUNTY COMMODITIES



IMPORTS



TOP COMMODITY by Tonnage, 2018 (relative to Florida)

FL Rank	Commodity	% Florida Share
1	Chemicals or Allied Products	31.38%
3	Mail or Contract Traffic	23.63%
1	Petroleum or Coal Products	22.19%
1	Nonmetallic Minerals	17.26%
2	Metallic Ores	16.32%

EXPORTS



FL Rank	Commodity	% Florida Share
1	Coal	99.28%
2	Primary Metal Products	31.36%
2	Chemicals or Allied Products	29.12%
1	Petroleum or Coal Products	27.84%
3	Small Packaged Freight Shipments	19.72%

TOP COMMODITY by Value, 2018 (relative to Florida)

FL Rank	Commodity	% Florida Share
2	Misc. Manufacturing Products	26.16%
1	Nonmetallic Minerals	25.92%
1	Petroleum or Coal Products	25.48%
3	Mail or Contract Traffic	23.63%
2	Electrical Equipment	17.41%

FL Rank	Commodity	% Florida Share
1	Coal	94.04%
1	Misc. Manufacturing Products	46.15%
1	Petroleum or Coal Products	34.10%
1	Electrical Equipment	32.25%
1	Rubber or Misc. Plastics	21.06%



TRANSPORTATION STATISTICS AND FREIGHT MOVEMENT BY MODE



64.39%
TONNAGE
45.84%
VALUE

1.65 M | Daily Truck Miles Traveled
1.98 | Planning Time Index
5,319 | Public Roadway Mileage



22.91%
TONNAGE
12.12%
VALUE

1 Major Seaport | Port Tampa Bay



12.47%
TONNAGE
8.13%
VALUE

138.64 | Class I Mainline Miles (CSX)
- Class II Mainline Miles
- Class III Mainline Miles



0.22%
TONNAGE
33.91%
VALUE

1 Major Airport | Tampa International Airport

FLORIDA HIGHLIGHTS

3rd most populous US State
\$1T Gross Domestic Product
4th Largest US Economy and 17th Largest Economy in World
Nation's 3rd largest workforce
1 in 5 U.S. exporters are located in Florida
\$153B International Trade
1.76M jobs supported by Trade, Transportation and Utilities industry sector
1.25M jobs supported by Leisure and Hospitality industry sector
131M annual visitors

CAPITAL	TALLAHASSEE
AREA (SQ . MILES)	53,624
LARGEST CITY (SIZE)	JACKSONVILLE
POPULATION (2019)	21,208,589
ANNUAL POP GROWTH RATE (2010-2019)	1.4%
EMPLOYMENT (2019)	8,884,065
ANNUAL EMP GROWTH RATE (2010-2019)	2.8%

Bureau of Economic Business Research, Bureau of Labor Statistics

DOMESTIC IMPORTS

1	GEORGIA	\$44B
2	CALIFORNIA	\$29B
3	TEXAS	\$26B
4	ALABAMA	\$18B
5	ILLINOIS	\$18B

INTERNATIONAL IMPORTS

1	CHINA	\$9.5B
2	JAPAN	\$6.5B
3	BRAZIL	\$6.4B
4	MEXICO	\$4.5B
5	CHILE	\$3.7B

DOMESTIC EXPORTS

1	GEORGIA	\$22B
2	TEXAS	\$19B
3	CALIFORNIA	\$15B
4	NORTH CAROLINA	\$12B
5	NEW YORK	\$10B

INTERNATIONAL EXPORTS

1	BRAZIL	\$13.4B
2	COLOMBIA	\$4.2B
3	ARGENTINA	\$3.6B
4	DOMINICAN REPUBLIC	\$3.1B
5	CHILE	\$3B



TRANSPORTATION STATISTICS AND FREIGHT MOVEMENT BY MODE



83%
TONNAGE

71%
VALUE

123,104 Public roadway mileage
12,130 State Highway System (SHS) mileage
30.7M Daily truck miles traveled on SHS
98 Public truck parking facilities



3.5%
TONNAGE

2.9%
VALUE

15 Deepwater seaports
4.1M Twenty-foot equivalent units (TEUs)
16.8M Annual cruise passengers



6.7%
TONNAGE

1.8%
VALUE

2,936 Miles of roads
6.9M Annual rail passenger traffic



0.1%
TONNAGE

5.4%
VALUE

129 Public use airports
20 Commercial service airports
2 Active spaceports



3.6%
TONNAGE

1%
VALUE

5,899 Miles of gas transmission and hazardous liquid pipelines



3.1%
TONNAGE

17.9%
VALUE

Includes shipments by multiple modes and by parcel delivery services, U.S. Postal Service, or couriers (capped at 150 pounds). This category is not limited to containerized or trailer-on-flatcar shipments.

FLORIDA COMMODITY FLOWS (2018-2045)



IMPORTS



WITHIN FL



EXPORTS

	2018	2045	2018	2045	2018	2045
TONNAGE	142M	190M	656M	761M	57M	103M
VALUE	\$321B	\$690B	\$402B	\$844B	\$180B	\$606B

Freight Analysis Framework (FAF) 4.5.1.



Rickey Fitzgerald
 Manager, Freight & Multimodal Operations
 Florida Department of Transportation
 605 Suwannee Street, Tallahassee, FL 32399
 Rickey.Fitzgerald@dot.state.fl.us
 850.414.4702