

FREIGHT AND LOGISTICS OVERVIEW

FEBRUARY 2021



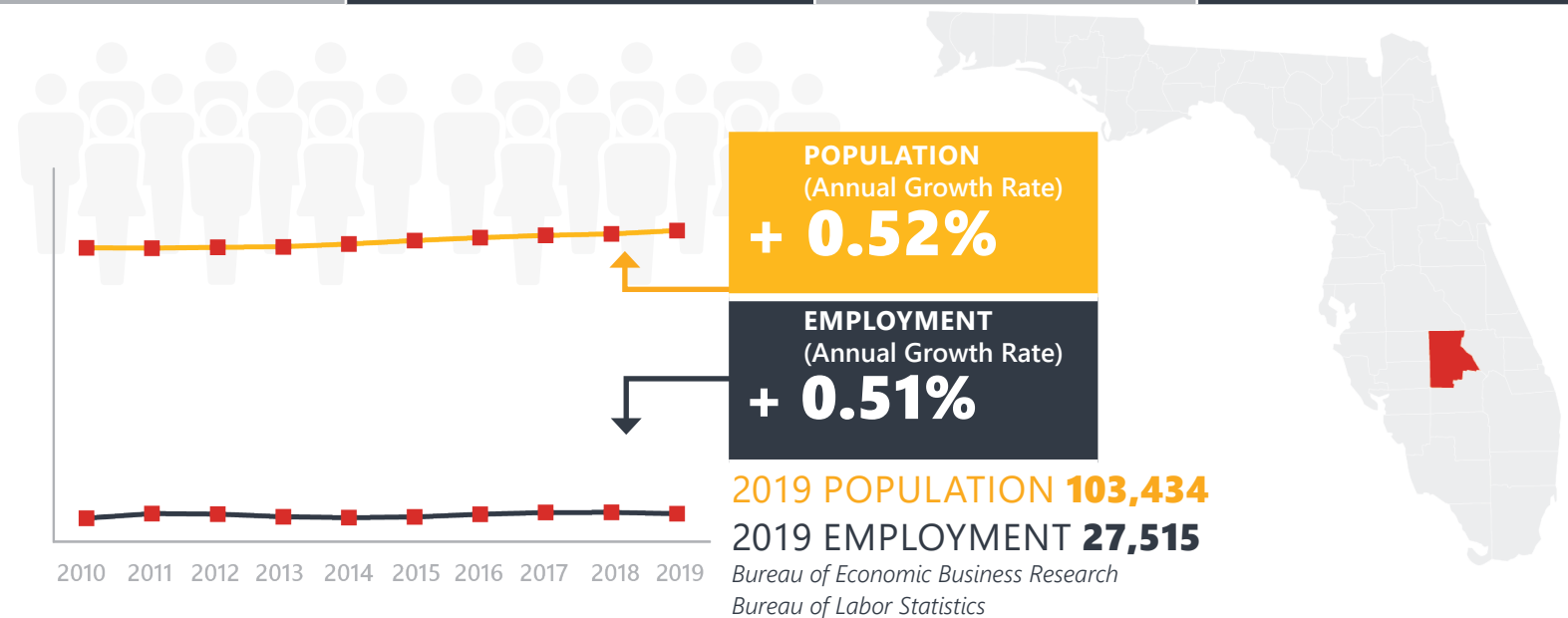
HIGHLANDS COUNTY



Mission: The department will provide a safe transportation system that ensures the mobility of people and goods, enhances economic prosperity, and preserves the quality of our environment and communities.

HIGHLANDS COUNTY HIGHLIGHTS

"THE CITY ON THE CIRCLE"		AREA (SQ . MILES)	10,085
COUNTY SEAT	SEBRING	LARGEST CITY (SIZE)	SEBRING



LARGEST INDUSTRY SECTORS BY EMPLOYMENT (2019)

Office of Economic and Demographic Research



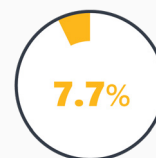
Education and health services



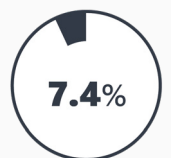
Trade, transportation, and utilities



Leisure and hospitality



Professional and business services



Natural resources and mining

FASTEST GROWING INDUSTRIES (2010-2019)

EDUCATION AND HEALTH SERVICES	JOBS ADDED	1,023
LEISURE AND HOSPITALITY		893
TRADE, TRANSPORTATION, AND UTILITIES		683
CONSTRUCTION		481
FINANCIAL ACTIVITIES		73

Bureau of Labor Statistics

DID YOU KNOW?

Highlands County annually hosts 12 hours of Sebring.

The county is home to Costa Farms, Sebring International Raceway, Lockwood Aviation, and Advanced Drainage Systems.

Highlands is the largest producer of Valencia oranges and home to more than 121,000 cows.

COMMODITY FLOW HIGHLIGHTS



IMPORTS

WITHIN COUNTY

EXPORTS

	2018	2045	2018	2045	2018	2045
Tonnage:	0.95 M	1.16 M	6819	6405	0.81 M	1.1 M
Value:	\$ 0.56 B	\$ 0.78 B	\$ 2.76 M	\$ 3.02 M	\$ 0.26 B	\$ 0.41 B



TOP COMMODITY by Tonnage, 2018



Nonmetallic Minerals	322,699
Clay, Concrete, Glass, Stone	186,944
Petroleum or Coal Products	165,048
Warehouse, Distribution Center and Drayage Movements	119,771
Food or Kindred Products	49,503

Farm Products	385,384
Clay, Concrete, Glass, Stone	328,828
Waste or Scrap Materials	74,951
Chemicals or Allied Products	12,537
Warehouse, Distribution Center and Drayage Movements	4,750



TOP COMMODITY by Value, 2018

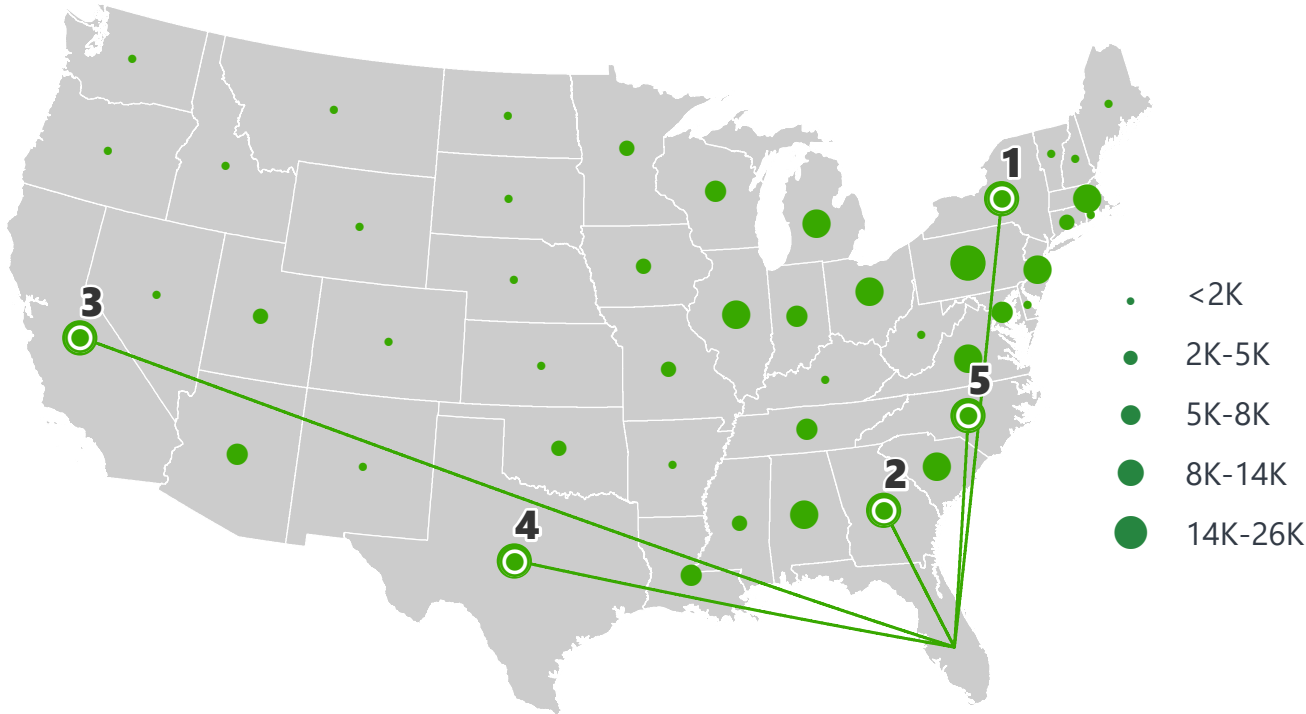


Transportation Equipment	\$ 149,463,795
Warehouse, Distribution Center and Drayage Movements	\$ 146,800,048
Petroleum or Coal Products	\$ 87,659,514
Food or Kindred Products	\$ 44,217,746
Farm Products	\$ 28,770,835

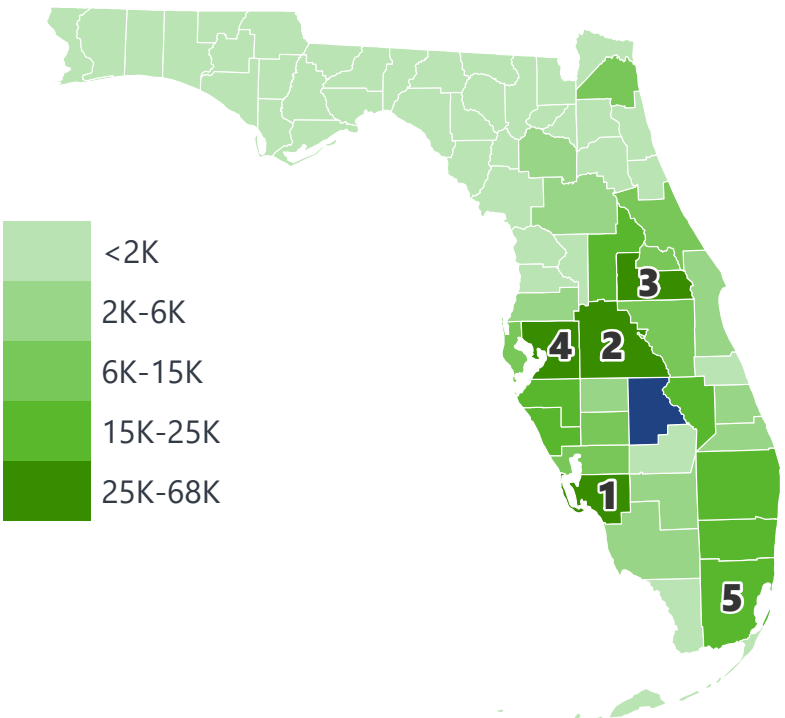
Farm Products	\$ 161,315,717
Clay, Concrete, Glass, Stone	\$ 44,861,696
Waste or Scrap Materials	\$ 18,333,969
Rubber or Misc. Plastics	\$ 12,169,752
Chemicals or Allied Products	\$ 10,281,622

HIGHLANDS COUNTY EXPORTS AND IMPORTS

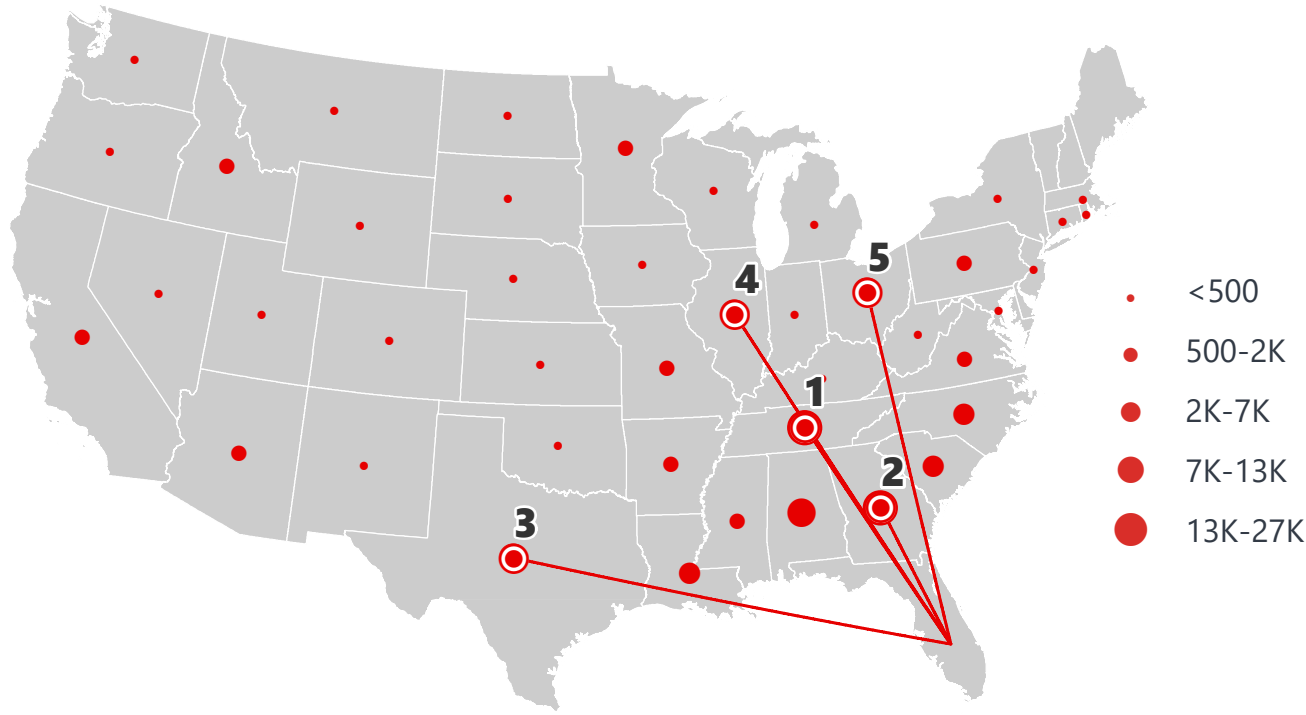
DOMESTIC EXPORTS (TONS)



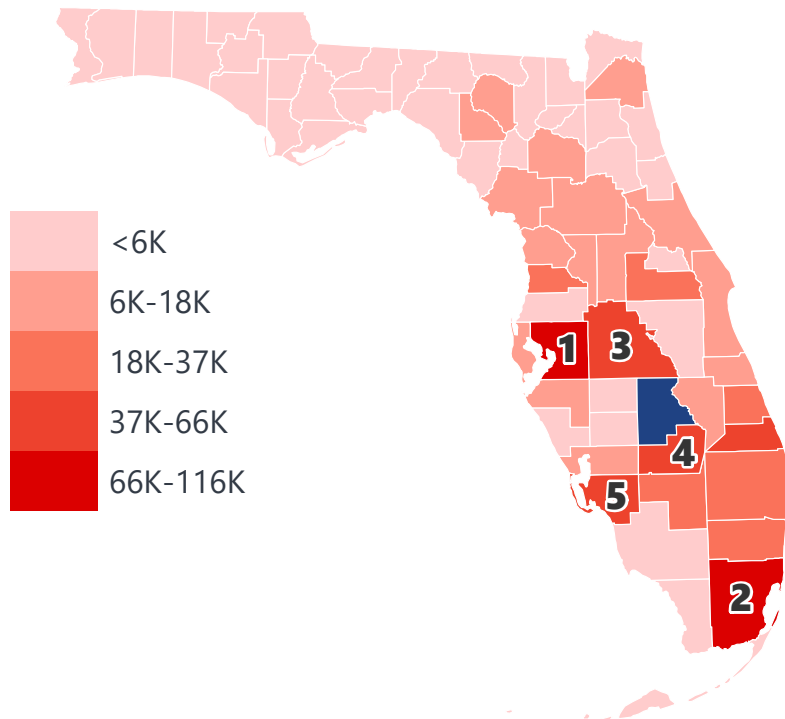
INTRASTATE EXPORTS (TONS)



DOMESTIC IMPORTS (TONS)



INTRASTATE IMPORTS (TONS)



DOMESTIC EXPORTS (TONNAGE)

1	New York	25,474
2	Georgia	23,920
3	California	23,044
4	Texas	21,567
5	North Carolina	18,832

INTRASTATE EXPORTS (TONNAGE)

1	Lee	67,584
2	Polk	58,818
3	Orange	43,793
4	Hillsborough	39,602
5	Miami-Dade	25,520

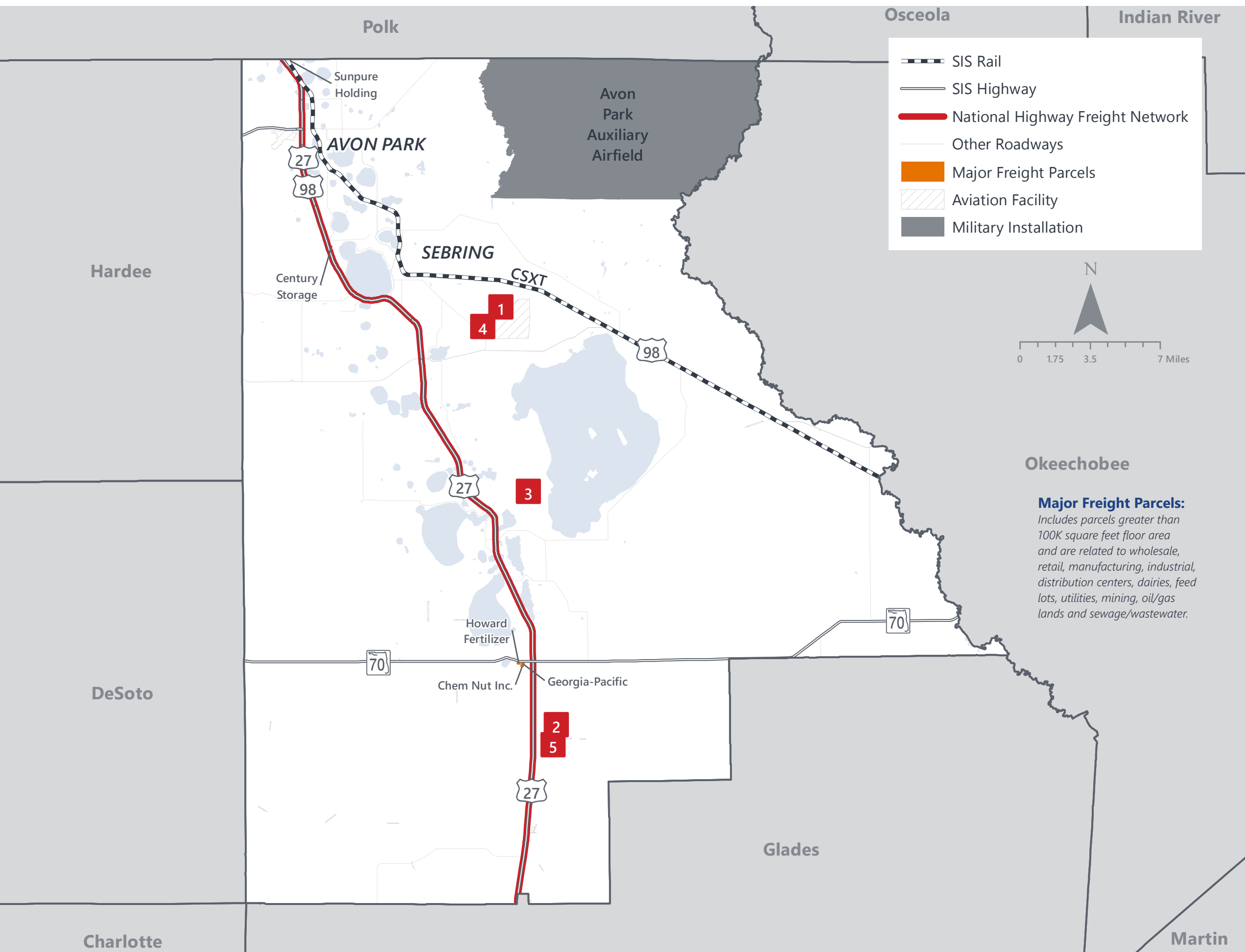
DOMESTIC IMPORTS (TONNAGE)

1	Tennessee	26,179
2	Georgia	18,208
3	Texas	12,970
4	Illinois	12,544
5	Ohio	10,764

INTRASTATE IMPORTS (TONNAGE)

1	Hillsborough	115,152
2	Miami-Dade	90,307
3	Polk	66,298
4	Glades	52,126
5	Lee	49,596

HIGHLANDS COUNTY FREIGHT INFRASTRUCTURE



LARGEST FREIGHT EMPLOYERS

1	Genpak	100-200
2	Consolidated Citrus Limited	50-100
3	SB Harvesting	50-100
4	Linpac Plastic	50-100
5	Consolidated Citrus Limited	50-100

MAJOR FREIGHT LAND USES

4.2 M SQ.FT Floor Area

55.04%	Warehousing and distribution centers
26.18%	Light manufacturing
4.31%	Minerals processing and construction material plants
3.14%	Utilities
3.04%	Open storage

66.6 M SQ.FT LAND AREA

28.04%	Utilities
23.50%	Warehousing and distribution centers
15.54%	Open storage
10.53%	Light manufacturing
9.96%	Mining lands, petroleum lands, or gas lands

Florida Department of Economic Opportunity, 2018
Florida Department of Revenue, 2019

MAJOR COUNTY COMMODITIES



IMPORTS



TOP COMMODITY by Tonnage, 2018 (relative to Florida)

FL Rank	Commodity	% Florida Share
39	Clay, Concrete, Glass, Stone	0.45%
39	Warehouse, Distribution Center and Drayage Movements	0.28%
45	Nonmetallic Minerals	0.27%
41	Petroleum or Coal Products	0.23%
35	Farm Products	0.23%

EXPORTS



FL Rank	Commodity	% Florida Share
12	Farm Products	2.77%
10	Leather or Leather Products	0.74%
32	Clay, Concrete, Glass, Stone	0.67%
27	Rubber or Misc. Plastics	0.30%
43	Waste or Scrap Materials	0.28%

TOP COMMODITY by Value, 2018 (relative to Florida)

FL Rank	Commodity	% Florida Share
37	Farm Products	0.34%
39	Clay, Concrete, Glass, Stone	0.32%
41	Petroleum or Coal Products	0.21%
33	Transportation Equipment	0.20%
46	Nonmetallic Minerals	0.19%

FL Rank	Commodity	% Florida Share
15	Farm Products	1.81%
34	Clay, Concrete, Glass, Stone	0.59%
43	Waste or Scrap Materials	0.27%
27	Rubber or Misc. Plastics	0.25%
18	Leather or Leather Products	0.19%



TRANSPORTATION STATISTICS AND FREIGHT MOVEMENT BY MODE



217 K | Daily Truck Miles Traveled
- Planning Time Index
1,679 | Public Roadway Mileage



95 Miles | Distance from closest seaport
(Port Manatee)



36.91 | Class I Mainline Miles (CSX)
- Class II Mainline Miles
31.50 | Class III Mainline Miles (SCXF)



90 Miles | Distance from closest
airport (Sarasota Bradenton
International Airport)

FLORIDA HIGHLIGHTS

3rd most populous US State

\$1T Gross Domestic Product

4th Largest US Economy and **17th Largest** Economy in World

Nation's **3rd largest** workforce

1 in 5 U.S. exporters are located in Florida

\$153B International Trade

1.76M jobs supported by Trade, Transportation and Utilities industry sector

1.25M jobs supported by Leisure and Hospitality industry sector

131M annual visitors

CAPITAL **TALLAHASSEE**

AREA
(SQ. MILES) **53,624**

LARGEST
CITY (SIZE) **JACKSONVILLE**

POPULATION
(2019) **21,208,589**

ANNUAL POP
GROWTH RATE
(2010-2019) **1.4%**

EMPLOYMENT
(2019) **8,884,065**

ANNUAL EMP
GROWTH RATE
(2010-2019) **2.8%**

*Bureau of Economic Business Research,
Bureau of Labor Statistics*

DOMESTIC IMPORTS

1	GEORGIA	\$44B
2	CALIFORNIA	\$29B
3	TEXAS	\$26B
4	ALABAMA	\$18B
5	ILLINOIS	\$18B

DOMESTIC EXPORTS

1	GEORGIA	\$22B
2	TEXAS	\$19B
3	CALIFORNIA	\$15B
4	NORTH CAROLINA	\$12B
5	NEW YORK	\$10B

INTERNATIONAL IMPORTS

1	CHINA	\$9.5B
2	JAPAN	\$6.5B
3	BRAZIL	\$6.4B
4	MEXICO	\$4.5B
5	CHILE	\$3.7B

INTERNATIONAL EXPORTS

1	BRAZIL	\$13.4B
2	COLOMBIA	\$4.2B
3	ARGENTINA	\$3.6B
4	DOMINICAN REPUBLIC	\$3.1B
5	CHILE	\$3B

TRANSPORTATION STATISTICS AND FREIGHT MOVEMENT BY MODE



83%
TONNAGE

71%
VALUE

123,104 Public roadway mileage
12,130 State Highway System (SHS) mileage
30.7M Daily truck miles traveled on SHS
98 Public truck parking facilities



3.5%
TONNAGE

2.9%
VALUE

15 Deepwater seaports
4.1M Twenty-foot equivalent units (TEUs)
16.8M Annual cruise passengers



6.7%
TONNAGE

1.8%
VALUE

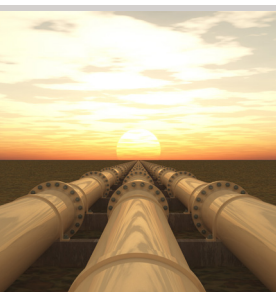
2,936 Miles of roads
6.9M Annual rail passenger traffic



0.1%
TONNAGE

5.4%
VALUE

129 Public use airports
20 Commercial service airports
2 Active spaceports



3.6%
TONNAGE

1%
VALUE

5,899 Miles of gas transmission and hazardous liquid pipelines



3.1%
TONNAGE

17.9%
VALUE

Includes shipments by multiple modes and by parcel delivery services, U.S. Postal Service, or couriers (capped at 150 pounds). This category is not limited to containerized or trailer-on-flatcar shipments.

FLORIDA COMMODITY FLOWS (2018-2045)



IMPORTS



WITHIN FL



EXPORTS

	2018	2045	2018	2045	2018	2045
TONNAGE	142M	190M	656M	761M	57M	103M
VALUE	\$321B	\$690B	\$402B	\$844B	\$180B	\$606B

Freight Analysis Framework (FAF) 4.5.1.



Rickey Fitzgerald
 Manager, Freight & Multimodal Operations
 Florida Department of Transportation
 605 Suwannee Street, Tallahassee, FL 32399
 Rickey.Fitzgerald@dot.state.fl.us
 850.414.4702