

FREIGHT AND LOGISTICS OVERVIEW

FEBRUARY 2021

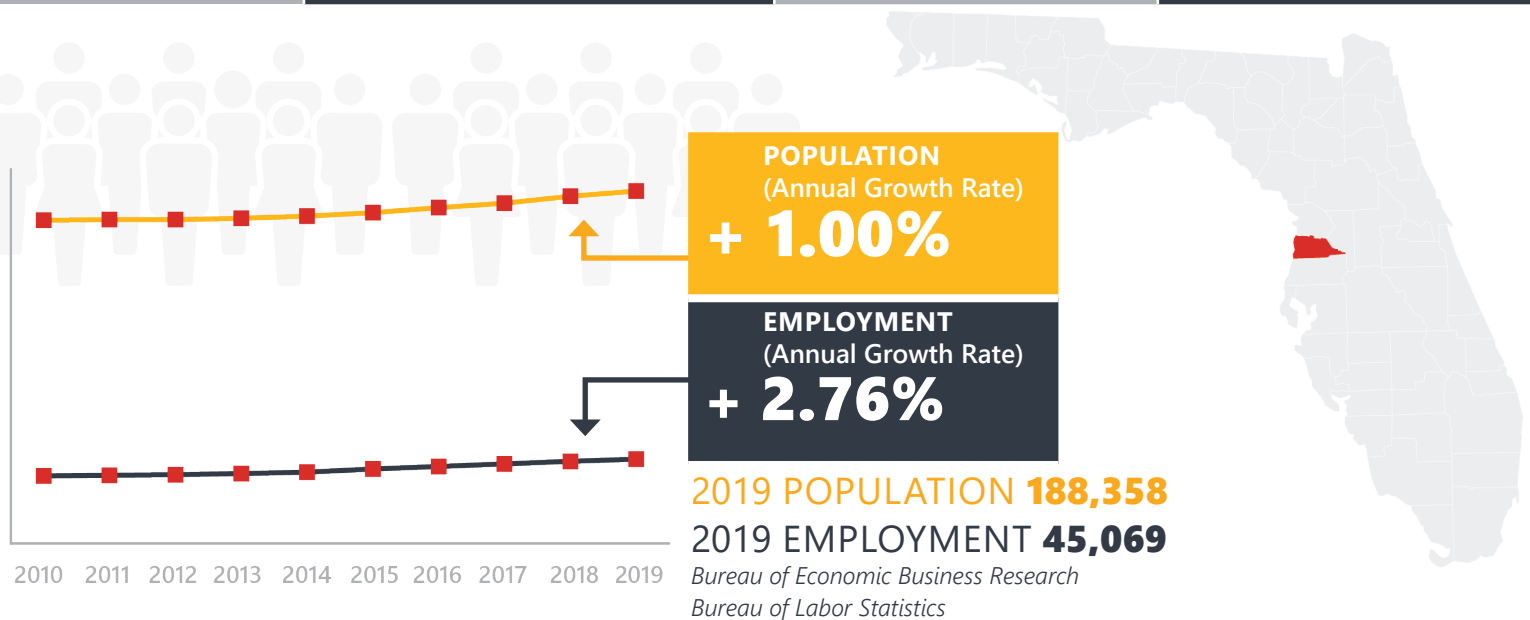
HERNANDO COUNTY



Mission: The department will provide a safe transportation system that ensures the mobility of people and goods, enhances economic prosperity, and preserves the quality of our environment and communities.

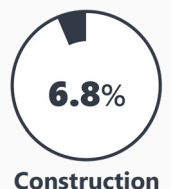
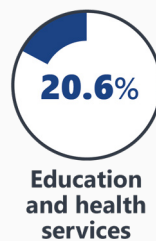
HERNANDO COUNTY HIGHLIGHTS

"FLORIDA'S ADVENTURE COAST"		AREA (SQ . MILES)	589
COUNTY SEAT	BROOKSVILLE	LARGEST CITY (SIZE)	BROOKSVILLE



LARGEST INDUSTRY SECTORS BY EMPLOYMENT (2019)

Office of Economic and Demographic Research



FASTEST GROWING INDUSTRIES (2010-2019)

PROFESSIONAL AND BUSINESS SERVICES	JOBS ADDED	2,202
EDUCATION AND HEALTH SERVICES		1,895
TRADE, TRANSPORTATION, AND UTILITIES		1,433
CONSTRUCTION		1,278
MANUFACTURING		1,074

Bureau of Labor Statistics

DID YOU KNOW?

Hernando County is home to the Brooksville-Tampa Bay Regional Airport & Technology Center which offers first-class aviation services, and industrial/corporate land leasing.

23% of Hernando County land is agriculturally classified as Greenbelt.

Ridge Manor, Hernando County is home to the largest (truck-to-truck) Wal-Mart Distribution Center in the U.S. at approximately 1.6 million square feet (150,000 m2) in size.

COMMODITY FLOW HIGHLIGHTS



IMPORTS

WITHIN COUNTY

EXPORTS

2018

2045

2018

2045

2018

2045

Tonnage:	2.01 M	2.21 M	0.38 M	97.1 K	13.57 M	4.92 M
Value:	\$ 1.23 B	\$ 1.62 B	\$ 26.35 M	\$ 34.95 M	\$ 0.59 B	\$ 0.73 B



TOP COMMODITY *by Tonnage, 2018*



Nonmetallic Minerals	508,591
Clay, Concrete, Glass, Stone	323,677
Petroleum or Coal Products	283,534
Warehouse, Distribution Center and Drayage Movements	267,783
Coal	236,172

Nonmetallic Minerals	12,237,308
Clay, Concrete, Glass, Stone	1,095,693
Waste or Scrap Materials	138,479
Farm Products	25,195
Warehouse, Distribution Center and Drayage Movements	13,990



TOP COMMODITY *by Value, 2018*

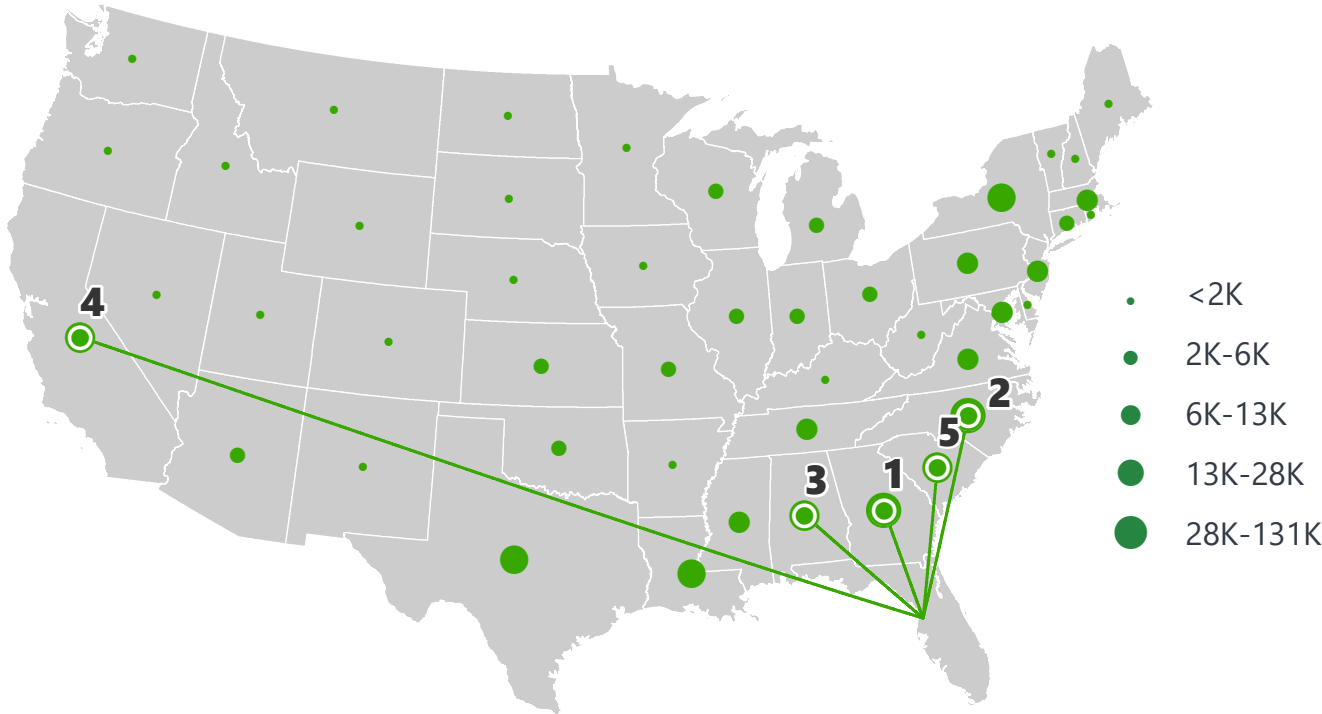


Warehouse, Distribution Center and Drayage Movements	\$ 454,981,585
Petroleum or Coal Products	\$ 151,859,431
Transportation Equipment	\$ 141,550,316
Food or Kindred Products	\$ 126,784,244
Chemicals or Allied Products	\$ 57,899,951

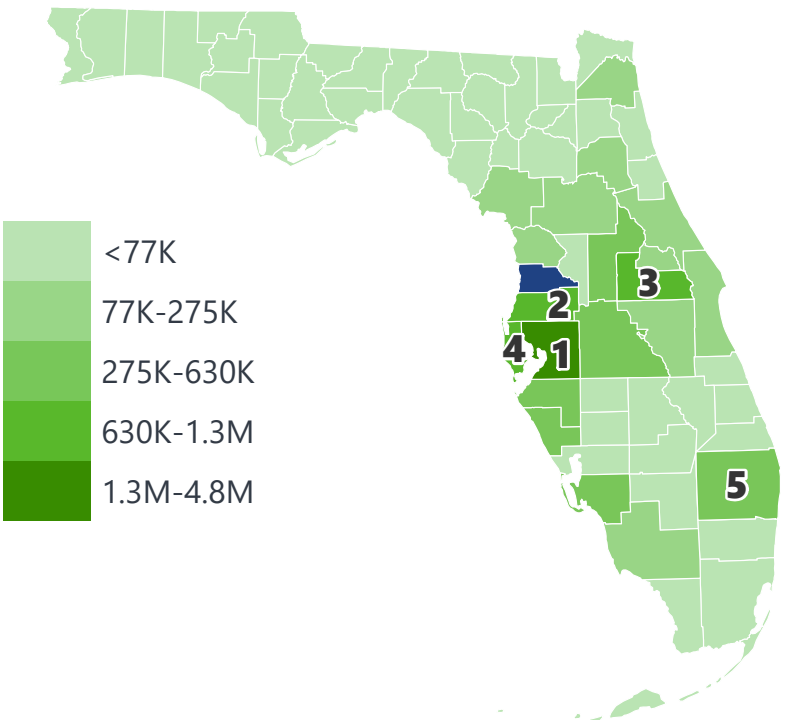
Clay, Concrete, Glass, Stone	\$ 147,400,442
Nonmetallic Minerals	\$ 131,723,792
Machinery	\$ 60,701,199
Fabricated Metal Products	\$ 46,333,545
Electrical Equipment	\$ 42,589,821

HERNANDO COUNTY EXPORTS AND IMPORTS

DOMESTIC EXPORTS (TONS)



INTRASTATE EXPORTS (TONS)



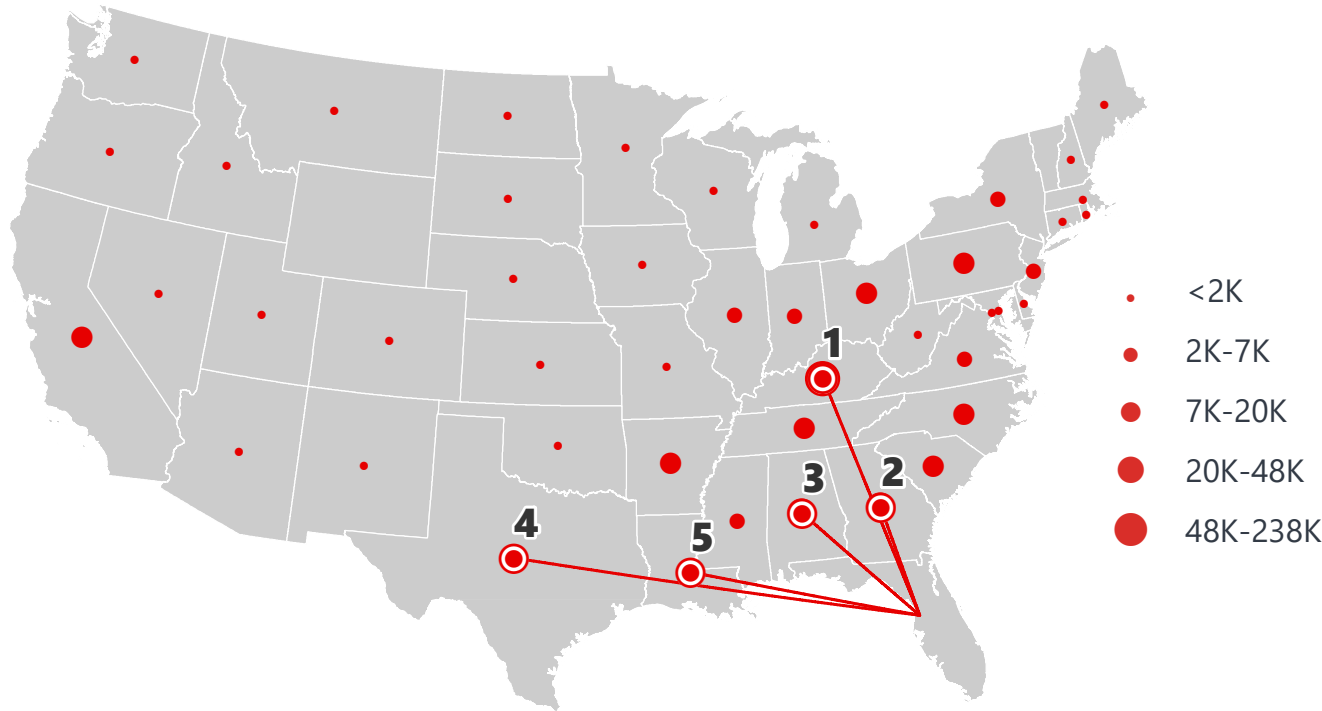
DOMESTIC EXPORTS (TONNAGE)

1	Georgia	130,494
2	North Carolina	77,302
3	Alabama	28,143
4	California	26,145
5	South Carolina	24,900

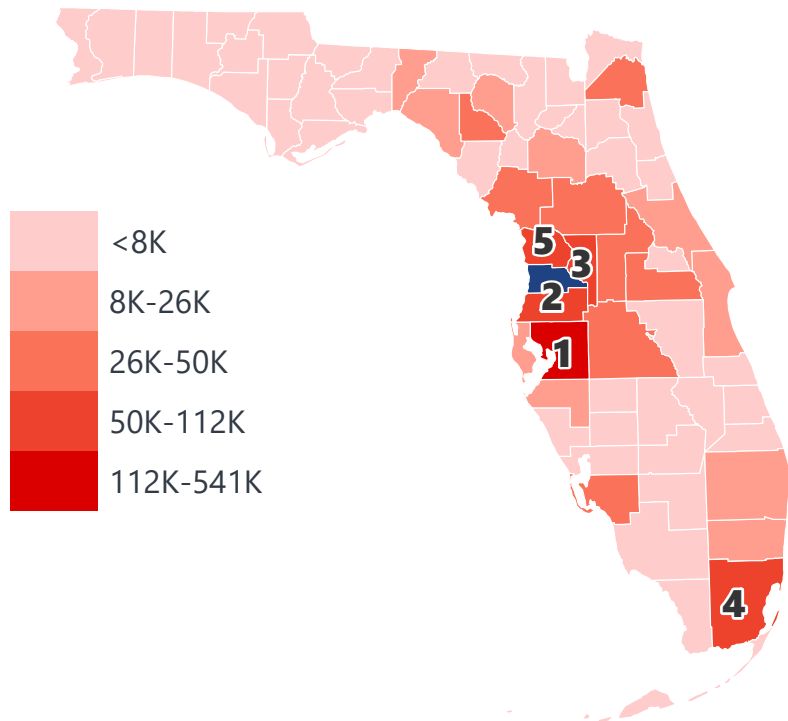
INTRASTATE EXPORTS (TONNAGE)

1	Hillsborough	4,751,865
2	Pasco	1,251,024
3	Orange	994,244
4	Pinellas	817,447
5	Palm Beach	630,228

DOMESTIC IMPORTS (TONS)



INTRASTATE IMPORTS (TONS)



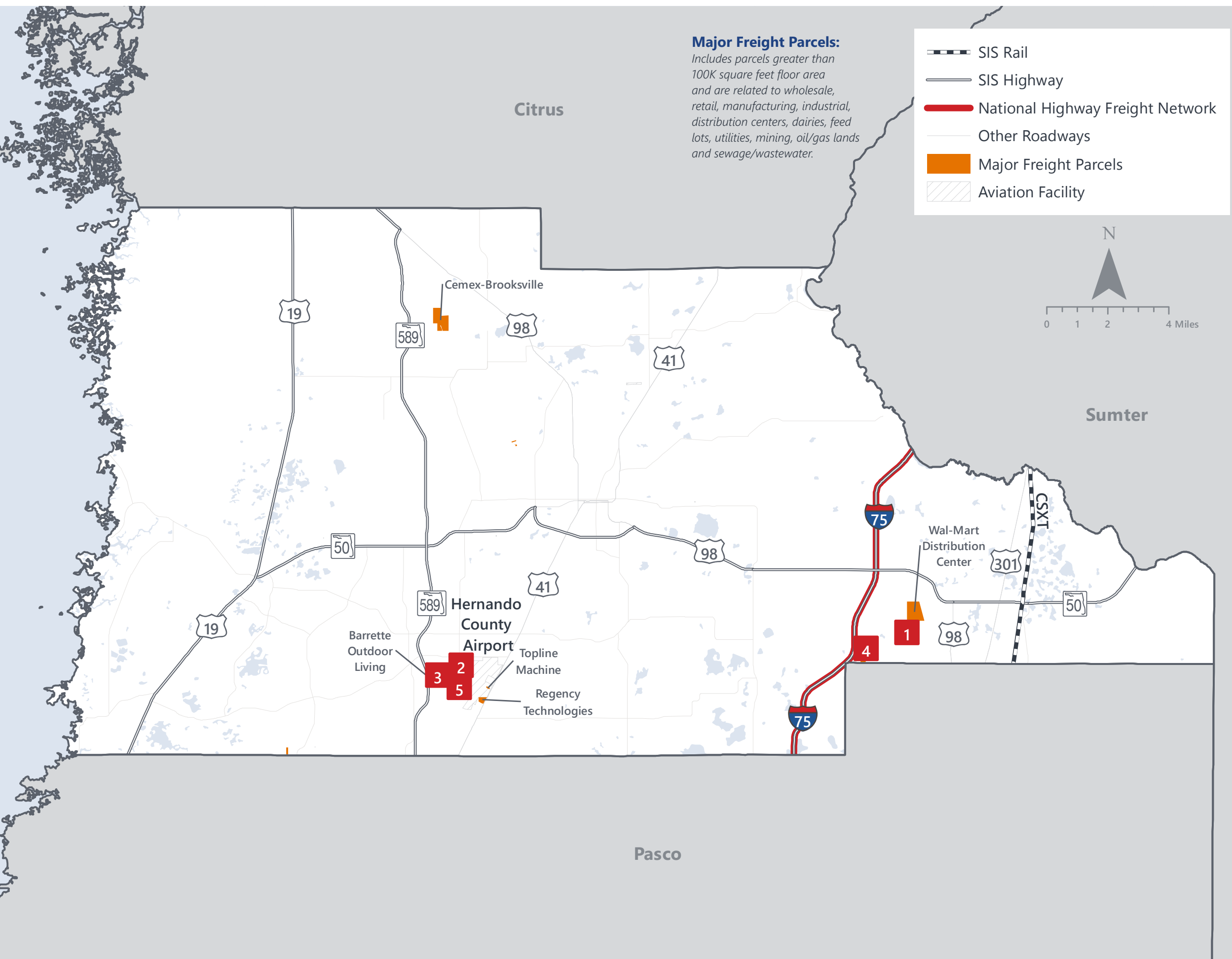
DOMESTIC IMPORTS (TONNAGE)

1	Kentucky	237,808
2	Georgia	48,154
3	Alabama	33,298
4	Texas	20,324
5	Louisiana	15,206

INTRASTATE IMPORTS (TONNAGE)

1	Hillsborough	540,163
2	Pasco	111,660
3	Sumter	87,387
4	Miami-Dade	82,986
5	Citrus	75,427

HERNANDO COUNTY FREIGHT INFRASTRUCTURE



LARGEST FREIGHT EMPLOYERS

1	Walmart DC	1K-2K
2	Accuform Manufacturing	200-300
3	Barrette Outdoor Living	200-300
4	Aydin Displays	100-200
5	Micro Matic USA	100-200

MAJOR FREIGHT LAND USES

7.0 M SQ.FT Floor Area

70.68%	Warehousing and distribution centers
15.61%	Light manufacturing
4.60%	Minerals processing and construction material plants
2.51%	Utilities
2.40%	Open storage

945.2 M SQ.FT LAND AREA

58.84%	Sewage disposal and waste land
20.75%	Mining lands, petroleum lands, or gas lands
8.74%	Minerals processing and construction material plants
7.28%	Utilities
3.05%	Warehousing and distribution centers

MAJOR COUNTY COMMODITIES



IMPORTS



TOP COMMODITY by Tonnage, 2018 (relative to Florida)

FL Rank	Commodity	% Florida Share
8	Coal	2.33%
21	Misc. Manufacturing Products	1.04%
22	Waste or Scrap Materials	0.91%
29	Clay, Concrete, Glass, Stone	0.78%
30	Warehouse, Distribution Center and Drayage Movements	0.63%

EXPORTS



FL Rank	Commodity	% Florida Share
2	Nonmetallic Minerals	11.86%
10	Misc. Manufacturing Products	2.76%
14	Clay, Concrete, Glass, Stone	2.23%
13	Marine Products	0.92%
14	Electrical Equipment	0.88%

TOP COMMODITY by Value, 2018 (relative to Florida)

FL Rank	Commodity	% Florida Share
8	Coal	2.33%
31	Clay, Concrete, Glass, Stone	0.61%
28	Warehouse, Distribution Center and Drayage Movements	0.58%
37	Marine Products	0.39%
33	Petroleum or Coal Products	0.36%

FL Rank	Commodity	% Florida Share
3	Nonmetallic Minerals	8.69%
15	Clay, Concrete, Glass, Stone	1.94%
12	Marine Products	1.16%
21	Fabricated Metal Products	0.84%
20	Machinery	0.57%



TRANSPORTATION STATISTICS AND FREIGHT MOVEMENT BY MODE



249 K | Daily Truck Miles Traveled
1.23 | Planning Time Index
1,812 | Public Roadway Mileage



55 Miles | Distance from closest seaport
(Port Tampa Bay)



16.13 | Class I Mainline Miles (CSX)
- Class II Mainline Miles
- Class III Mainline Miles



50+ Miles | Distance from closest airports
(Tampa International Airport
and Orlando International
Airport)

FLORIDA HIGHLIGHTS

3rd most populous US State

\$1T Gross Domestic Product

4th Largest US Economy and **17th Largest** Economy in World

Nation's **3rd largest** workforce

1 in 5 U.S. exporters are located in Florida

\$153B International Trade

1.76M jobs supported by Trade, Transportation and Utilities industry sector

1.25M jobs supported by Leisure and Hospitality industry sector

131M annual visitors

CAPITAL **TALLAHASSEE**

AREA (SQ. MILES) **53,624**

LARGEST CITY (SIZE) **JACKSONVILLE**

POPULATION (2019) **21,208,589**

ANNUAL POP GROWTH RATE (2010-2019) **1.4%**

EMPLOYMENT (2019) **8,884,065**

ANNUAL EMP GROWTH RATE (2010-2019) **2.8%**

*Bureau of Economic Business Research,
Bureau of Labor Statistics*

DOMESTIC IMPORTS

1	GEORGIA	\$44B
2	CALIFORNIA	\$29B
3	TEXAS	\$26B
4	ALABAMA	\$18B
5	ILLINOIS	\$18B

DOMESTIC EXPORTS

1	GEORGIA	\$22B
2	TEXAS	\$19B
3	CALIFORNIA	\$15B
4	NORTH CAROLINA	\$12B
5	NEW YORK	\$10B

INTERNATIONAL IMPORTS

1	CHINA	\$9.5B
2	JAPAN	\$6.5B
3	BRAZIL	\$6.4B
4	MEXICO	\$4.5B
5	CHILE	\$3.7B

INTERNATIONAL EXPORTS

1	BRAZIL	\$13.4B
2	COLOMBIA	\$4.2B
3	ARGENTINA	\$3.6B
4	DOMINICAN REPUBLIC	\$3.1B
5	CHILE	\$3B

TRANSPORTATION STATISTICS AND FREIGHT MOVEMENT BY MODE



83%
TONNAGE

71%
VALUE

123,104 Public roadway mileage
12,130 State Highway System (SHS) mileage
30.7M Daily truck miles traveled on SHS
98 Public truck parking facilities



3.5%
TONNAGE

2.9%
VALUE

15 Deepwater seaports
4.1M Twenty-foot equivalent units (TEUs)
16.8M Annual cruise passengers



6.7%
TONNAGE

1.8%
VALUE

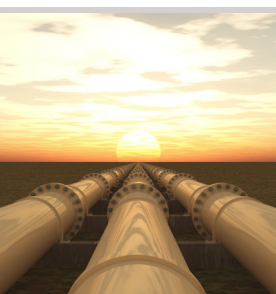
2,936 Miles of roads
6.9M Annual rail passenger traffic



0.1%
TONNAGE

5.4%
VALUE

129 Public use airports
20 Commercial service airports
2 Active spaceports



3.6%
TONNAGE

1%
VALUE

5,899 Miles of gas transmission and hazardous liquid pipelines



3.1%
TONNAGE

17.9%
VALUE

Includes shipments by multiple modes and by parcel delivery services, U.S. Postal Service, or couriers (capped at 150 pounds). This category is not limited to containerized or trailer-on-flatcar shipments.

FLORIDA COMMODITY FLOWS (2018-2045)



IMPORTS



WITHIN FL



EXPORTS

	2018	2045	2018	2045	2018	2045
TONNAGE	142M	190M	656M	761M	57M	103M
VALUE	\$321B	\$690B	\$402B	\$844B	\$180B	\$606B

Freight Analysis Framework (FAF) 4.5.1.



Rickey Fitzgerald
Manager, Freight & Multimodal Operations
 Florida Department of Transportation
 605 Suwannee Street, Tallahassee, FL 32399
 Rickey.Fitzgerald@dot.state.fl.us
 850.414.4702