

FREIGHT AND LOGISTICS OVERVIEW

FEBRUARY 2021

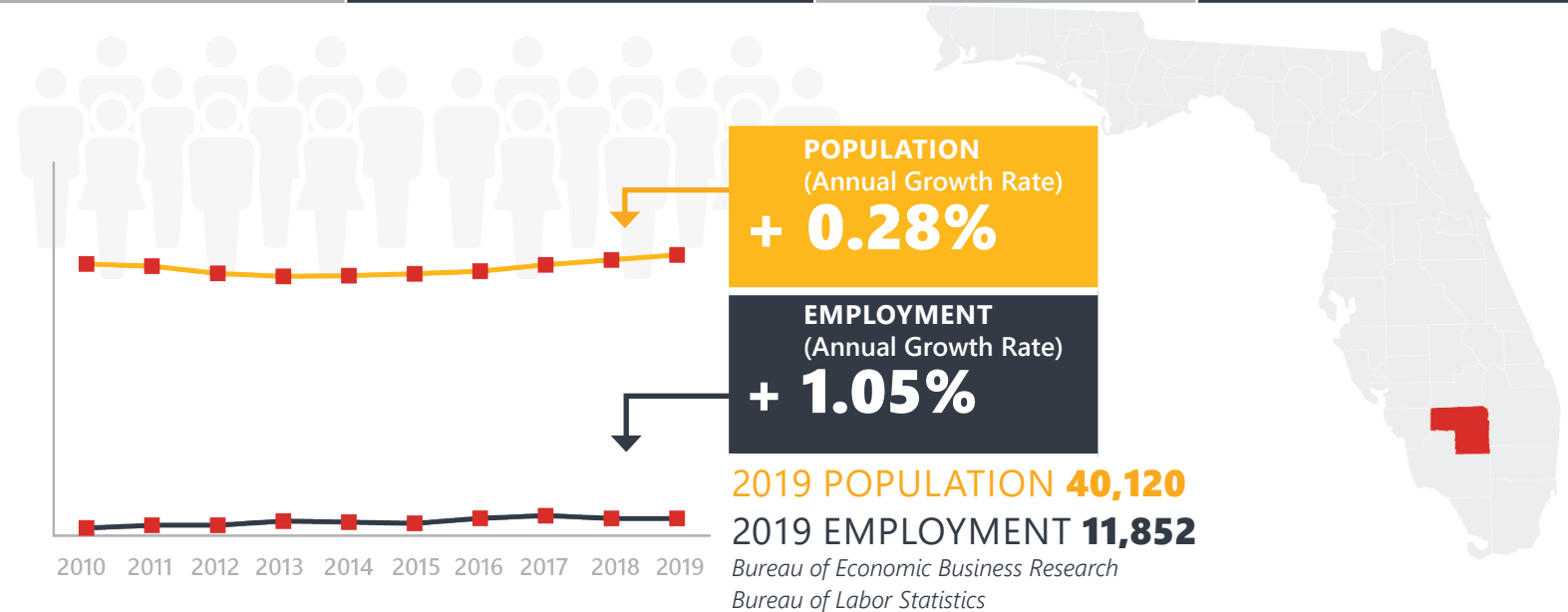
HENDRY COUNTY



Mission: The department will provide a safe transportation system that ensures the mobility of people and goods, enhances economic prosperity, and preserves the quality of our environment and communities.

HENDRY COUNTY HIGHLIGHTS

"THE TRUE NATURE OF SOUTHERN FLORIDA"		AREA (SQ . MILES)	1,190
COUNTY SEAT	LABELLE	LARGEST CITY (SIZE)	CLEWISTON



LARGEST INDUSTRY SECTORS BY EMPLOYMENT (2019)

Office of Economic and Demographic Research



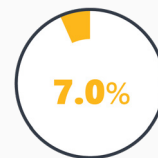
Natural resources and mining



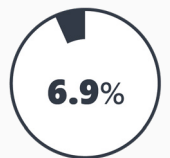
Trade, transportation, and utilities



Leisure and hospitality



Education and health services



Construction

FASTEST GROWING INDUSTRIES (2010-2019)

CONSTRUCTION	508
LEISURE AND HOSPITALITY	369
PROFESSIONAL AND BUSINESS SERVICES	299
TRADE, TRANSPORTATION, AND UTILITIES	128
EDUCATION AND HEALTH SERVICES	106

JOB'S ADDED

Bureau of Labor Statistics

DID YOU KNOW?

The county is nestled between the south shores of Lake Okeechobee and the northern sawgrass marshes of the Everglades.

The top crops in Hendry county are citrus, sugar cane, and vegetables.

More than 70% of the land in Hendry County is used for agricultural purposes.

COMMODITY FLOW HIGHLIGHTS



IMPORTS

WITHIN COUNTY

EXPORTS

	2018	2045	2018	2045	2018	2045
Tonnage:	1.38 M	1.22 M	42.7 K	41.72 K	5.9 M	5.96 M
Value:	\$ 0.29 B	\$ 0.37 B	\$ 5.88 M	\$ 7.89 M	\$ 0.72 B	\$ 0.89 B



TOP COMMODITY by Tonnage, 2018



Nonmetallic Minerals	763,328
Clay, Concrete, Glass, Stone	283,309
Petroleum or Coal Products	145,296
Warehouse, Distribution Center and Drayage Movements	69,178
Waste or Scrap Materials	34,597

Farm Products	2,970,402
Nonmetallic Minerals	1,957,919
Food or Kindred Products	892,344
Waste or Scrap Materials	42,379
Clay, Concrete, Glass, Stone	24,264



TOP COMMODITY by Value, 2018

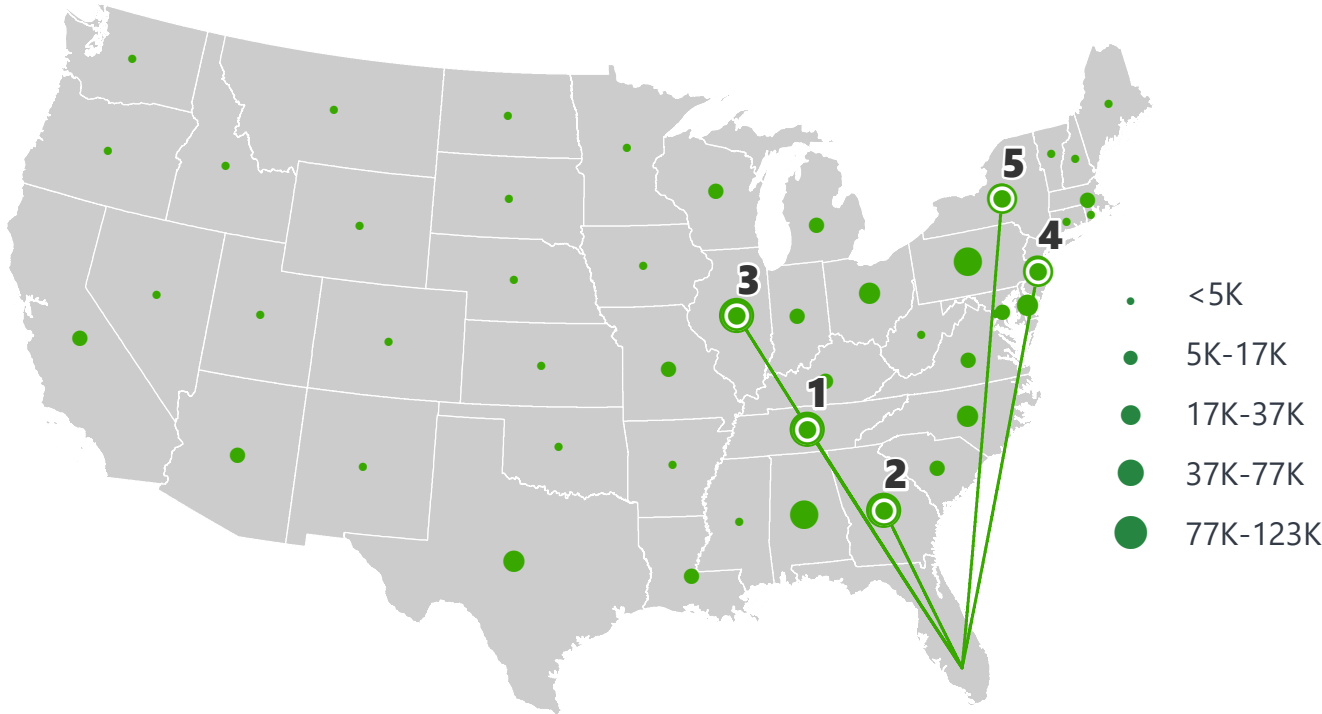


Warehouse, Distribution Center and Drayage Movements	\$ 85,597,119
Petroleum or Coal Products	\$ 54,505,219
Clay, Concrete, Glass, Stone	\$ 33,169,532
Farm Products	\$ 23,776,720
Food or Kindred Products	\$ 20,142,116

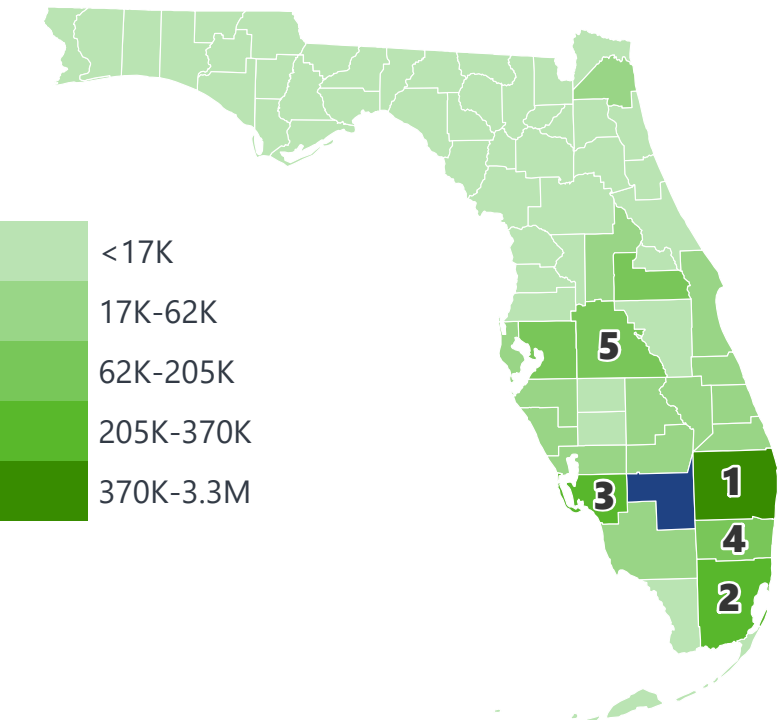
Food or Kindred Products	\$ 404,404,642
Farm Products	\$ 282,001,595
Nonmetallic Minerals	\$ 15,858,951
Waste or Scrap Materials	\$ 10,433,684
Marine Products	\$ 3,584,264

HENDRY COUNTY EXPORTS AND IMPORTS

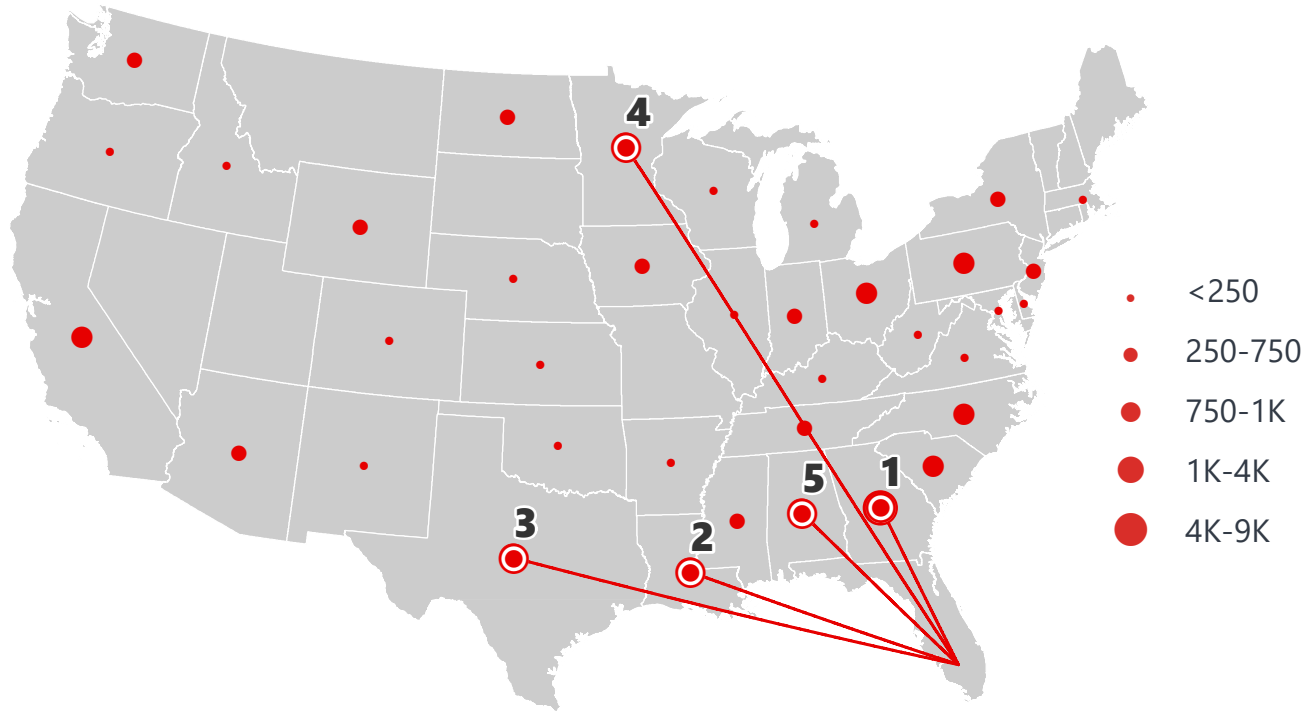
DOMESTIC EXPORTS (TONS)



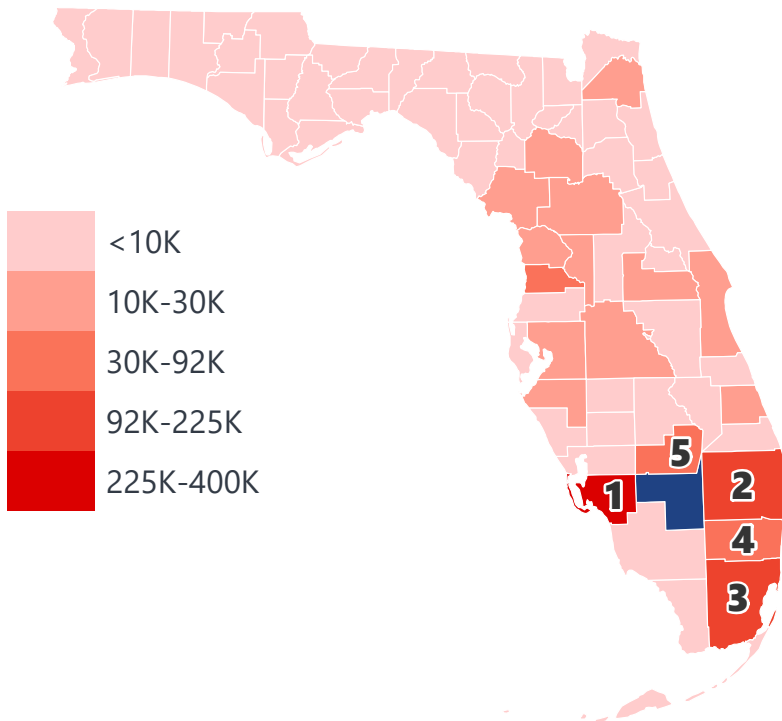
INTRASTATE EXPORTS (TONS)



DOMESTIC IMPORTS (TONS)



INTRASTATE IMPORTS (TONS)



DOMESTIC EXPORTS (TONNAGE)

1	Tennessee	122,131
2	Georgia	106,297
3	Illinois	93,074
4	New Jersey	76,915
5	New York	61,773

INTRASTATE EXPORTS (TONNAGE)

1	Palm Beach	3,229,810
2	Miami-Dade	370,046
3	Lee	270,066
4	Broward	204,648
5	Polk	134,852

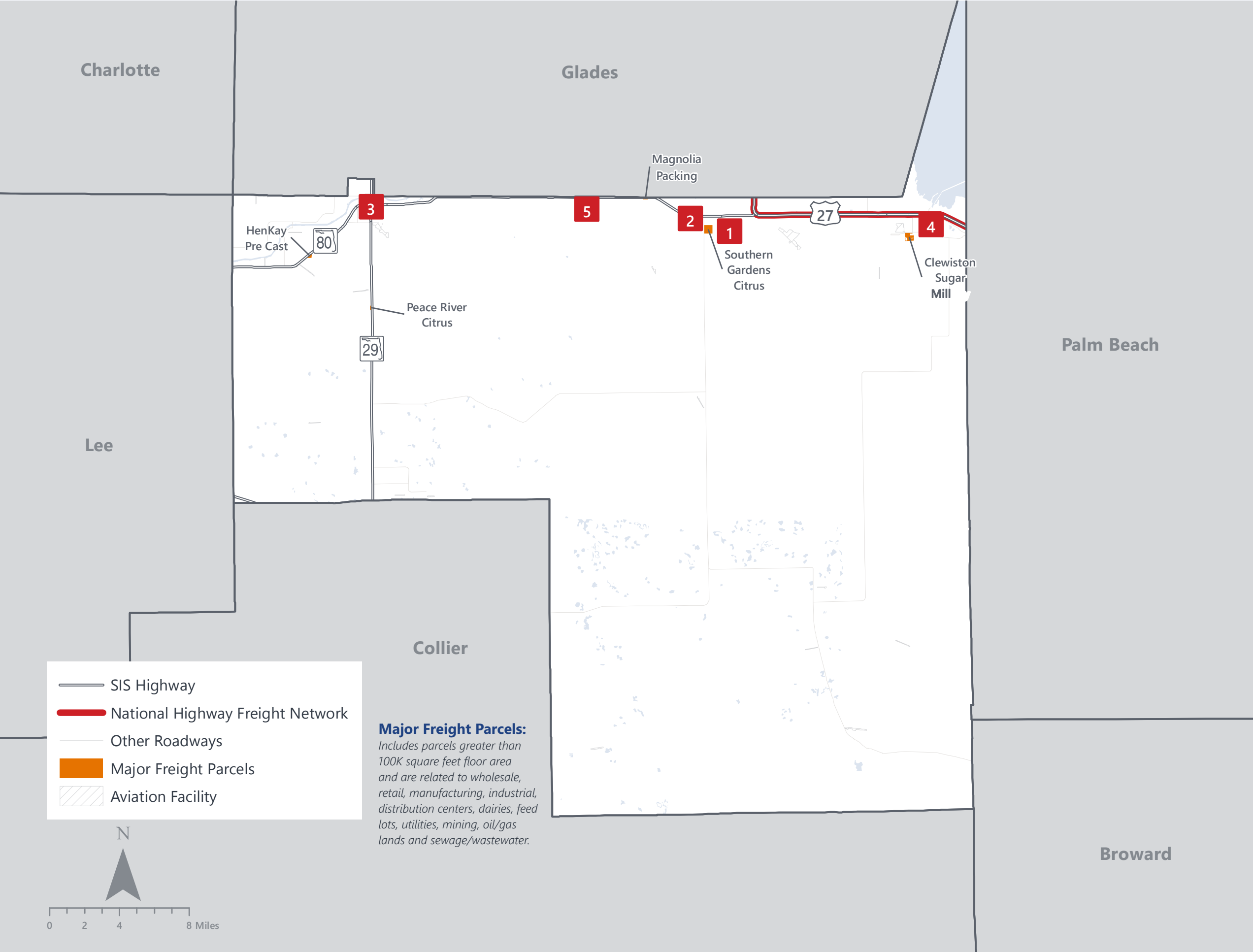
DOMESTIC IMPORTS (TONNAGE)

1	Georgia	8,170
2	Louisiana	4,017
3	Texas	3,027
4	Minnesota	2,806
5	Alabama	2,618

INTRASTATE IMPORTS (TONNAGE)

1	Lee	399,182
2	Palm Beach	224,668
3	Miami-Dade	187,387
4	Broward	91,360
5	Glades	72,196

HENDRY COUNTY FREIGHT INFRASTRUCTURE



LARGEST FREIGHT EMPLOYERS

1	Southern Gardens Citrus	100-200
2	Southern Gardens Groves	50-100
3	Peace River Citrus	50-100
4	D&J Machinery	0-50
5	Manheimer Foundation	0-50

MAJOR FREIGHT LAND USES

3.2 M SQ.FT Floor Area

51.48%	Other food processing
22.66%	Warehousing and distribution centers
12.66%	Light manufacturing
8.43%	Fruit, vegetable and meat packing plants
1.62%	Minerals processing and construction material plants

553.2 M SQ.FT LAND AREA

87.96%	Sewage disposal and waste land
6.21%	Utilities
2.91%	Other food processing
1.21%	Warehousing and distribution centers
0.76%	Light manufacturing

MAJOR COUNTY COMMODITIES



IMPORTS



TOP COMMODITY by Tonnage, 2018 (relative to Florida)

FL Rank	Commodity	% Florida Share
33	Clay, Concrete, Glass, Stone	0.68%
28	Nonmetallic Minerals	0.63%
38	Waste or Scrap Materials	0.22%
42	Petroleum or Coal Products	0.21%
37	Farm Products	0.19%

EXPORTS



FL Rank	Commodity	% Florida Share
1	Farm Products	21.33%
8	Food or Kindred Products	5.82%
16	Nonmetallic Minerals	1.90%
29	Marine Products	0.18%
45	Waste or Scrap Materials	0.16%

TOP COMMODITY by Value, 2018 (relative to Florida)

FL Rank	Commodity	% Florida Share
31	Nonmetallic Minerals	0.46%
36	Clay, Concrete, Glass, Stone	0.45%
39	Farm Products	0.28%
37	Waste or Scrap Materials	0.22%
42	Petroleum or Coal Products	0.13%

FL Rank	Commodity	% Florida Share
8	Farm Products	3.16%
9	Food or Kindred Products	2.64%
22	Nonmetallic Minerals	1.05%
29	Marine Products	0.22%
45	Waste or Scrap Materials	0.16%



TRANSPORTATION STATISTICS AND FREIGHT MOVEMENT BY MODE



117 K | Daily Truck Miles Traveled
- Planning Time Index
622 | Public Roadway Mileage



90 Miles | Distance from closest seaport
(Port Palm Beach)



- Class I Mainline Miles
- Class II Mainline Miles
12.37 | Class III Mainline Miles (SCXF)



60 Miles | Distance from closest
airport (Southwest Florida
International Airport)

FLORIDA HIGHLIGHTS

3rd most populous US State

\$1T Gross Domestic Product

4th Largest US Economy and **17th Largest** Economy in World

Nation's **3rd largest** workforce

1 in 5 U.S. exporters are located in Florida

\$153B International Trade

1.76M jobs supported by Trade, Transportation and Utilities industry sector

1.25M jobs supported by Leisure and Hospitality industry sector

131M annual visitors

CAPITAL **TALLAHASSEE**

AREA
(SQ. MILES) **53,624**

LARGEST
CITY (SIZE) **JACKSONVILLE**

POPULATION
(2019) **21,208,589**

ANNUAL POP
GROWTH RATE
(2010-2019) **1.4%**

EMPLOYMENT
(2019) **8,884,065**

ANNUAL EMP
GROWTH RATE
(2010-2019) **2.8%**

*Bureau of Economic Business Research,
Bureau of Labor Statistics*

DOMESTIC IMPORTS

1	GEORGIA	\$44B
2	CALIFORNIA	\$29B
3	TEXAS	\$26B
4	ALABAMA	\$18B
5	ILLINOIS	\$18B

DOMESTIC EXPORTS

1	GEORGIA	\$22B
2	TEXAS	\$19B
3	CALIFORNIA	\$15B
4	NORTH CAROLINA	\$12B
5	NEW YORK	\$10B

INTERNATIONAL IMPORTS

1	CHINA	\$9.5B
2	JAPAN	\$6.5B
3	BRAZIL	\$6.4B
4	MEXICO	\$4.5B
5	CHILE	\$3.7B

INTERNATIONAL EXPORTS

1	BRAZIL	\$13.4B
2	COLOMBIA	\$4.2B
3	ARGENTINA	\$3.6B
4	DOMINICAN REPUBLIC	\$3.1B
5	CHILE	\$3B

TRANSPORTATION STATISTICS AND FREIGHT MOVEMENT BY MODE



83%
TONNAGE

71%
VALUE

123,104 Public roadway mileage
12,130 State Highway System (SHS) mileage
30.7M Daily truck miles traveled on SHS
98 Public truck parking facilities



3.5%
TONNAGE

2.9%
VALUE

15 Deepwater seaports
4.1M Twenty-foot equivalent units (TEUs)
16.8M Annual cruise passengers



6.7%
TONNAGE

1.8%
VALUE

2,936 Miles of roads
6.9M Annual rail passenger traffic



0.1%
TONNAGE

5.4%
VALUE

129 Public use airports
20 Commercial service airports
2 Active spaceports



3.6%
TONNAGE

1%
VALUE

5,899 Miles of gas transmission and hazardous liquid pipelines



3.1%
TONNAGE

17.9%
VALUE

Includes shipments by multiple modes and by parcel delivery services, U.S. Postal Service, or couriers (capped at 150 pounds). This category is not limited to containerized or trailer-on-flatcar shipments.

FLORIDA COMMODITY FLOWS (2018-2045)



IMPORTS



WITHIN FL



EXPORTS

	2018	2045	2018	2045	2018	2045
TONNAGE	142M	190M	656M	761M	57M	103M
VALUE	\$321B	\$690B	\$402B	\$844B	\$180B	\$606B

Freight Analysis Framework (FAF) 4.5.1.



Rickey Fitzgerald
Manager, Freight & Multimodal Operations
 Florida Department of Transportation
 605 Suwannee Street, Tallahassee, FL 32399
 Rickey.Fitzgerald@dot.state.fl.us
 850.414.4702