

FREIGHT AND LOGISTICS OVERVIEW

FEBRUARY 2021

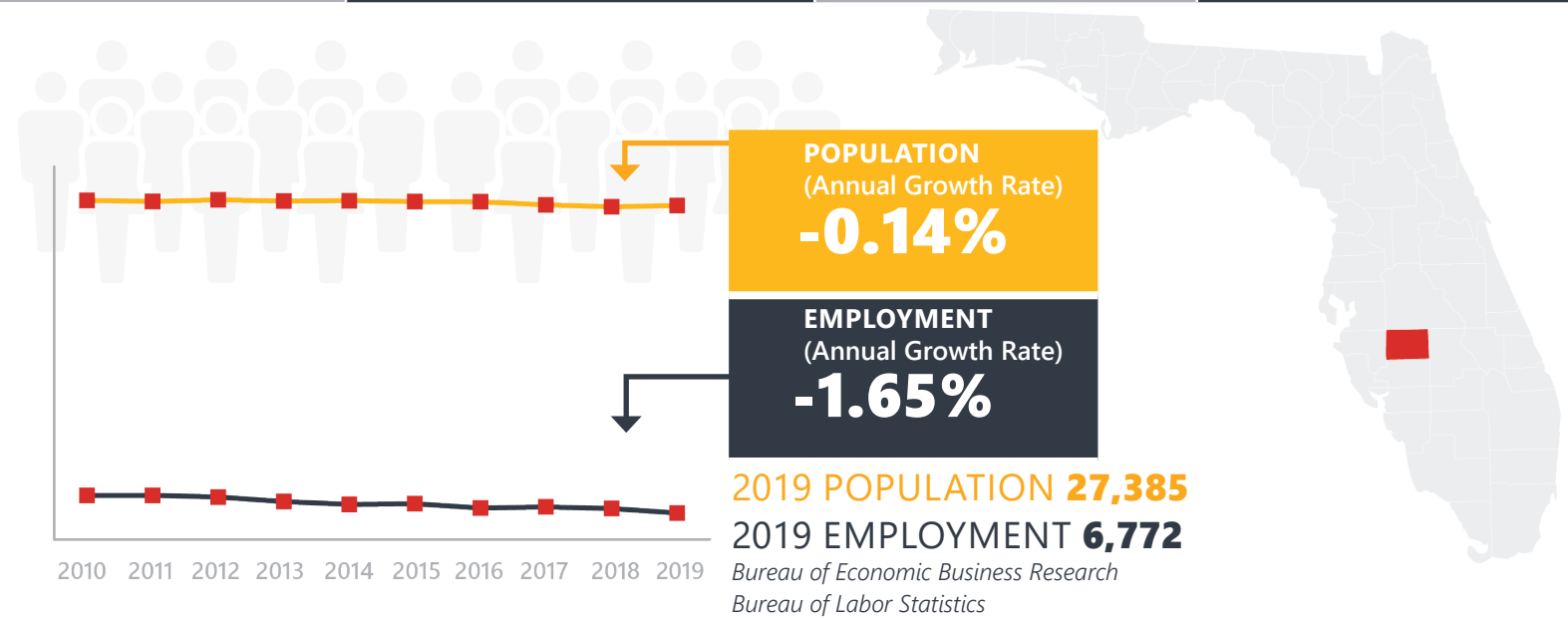
HARDEE COUNTY



Mission: The department will provide a safe transportation system that ensures the mobility of people and goods, enhances economic prosperity, and preserves the quality of our environment and communities.

HARDEE COUNTY HIGHLIGHTS

"CUCUMBER VALLEY OF THE WORLD"		AREA (SQ . MILES)	638
COUNTY SEAT	WAUCHULA	LARGEST CITY (SIZE)	WAUCHULA



LARGEST INDUSTRY SECTORS BY EMPLOYMENT (2019)

Office of Economic and Demographic Research



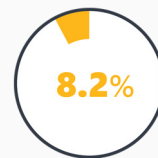
Natural resources and mining



Trade, transportation & utilities



Education & health services



Leisure & hospitality



Construction

FASTEST GROWING INDUSTRIES (2010-2019)

LEISURE AND HOSPITALITY	JOBS ADDED	162
CONSTRUCTION		155
MANUFACTURING		55
PROFESSIONAL AND BUSINESS SERVICES		53
FINANCIAL ACTIVITIES		15

Bureau of Labor Statistics

DID YOU KNOW?

Hardee County has 12 records of mines listed by the United States Geological Survey (USGS) which includes iron, fluorine-fluorite, uranium, aluminum, and magnesite.

Hardee County is located in what is known as Bone Valley and has a large natural source of phosphate, thus making phosphate mining one of the largest industries in the county.

Hardee County is home to eco-tourism based on 1200 acres, 4 parks and the Peace River.

COMMODITY FLOW HIGHLIGHTS



IMPORTS

WITHIN COUNTY

EXPORTS

2018

2045

2018

2045

2018

2045

Tonnage:	0.66 M	0.54 M	1.91 K	2.13 K	1.95 M	3.30 M
Value:	\$ 0.15 B	\$ 0.21 B	\$ 1.34 M	\$ 1.65 M	\$ 0.36 B	\$ 0.53 B



TOP COMMODITY by Tonnage, 2018



Nonmetallic Minerals	415,637
Clay, Concrete, Glass, Stone	70,920
Petroleum or Coal Products	58,839
Warehouse, Distribution Center and Drayage Movements	32,182
Chemicals or Allied Products	25,898

Nonmetallic Minerals	1,386,661
Farm Products	403,083
Lumber or Wood Products	91,621
Waste or Scrap Materials	27,612
Food or Kindred Products	23,713



TOP COMMODITY by Value, 2018

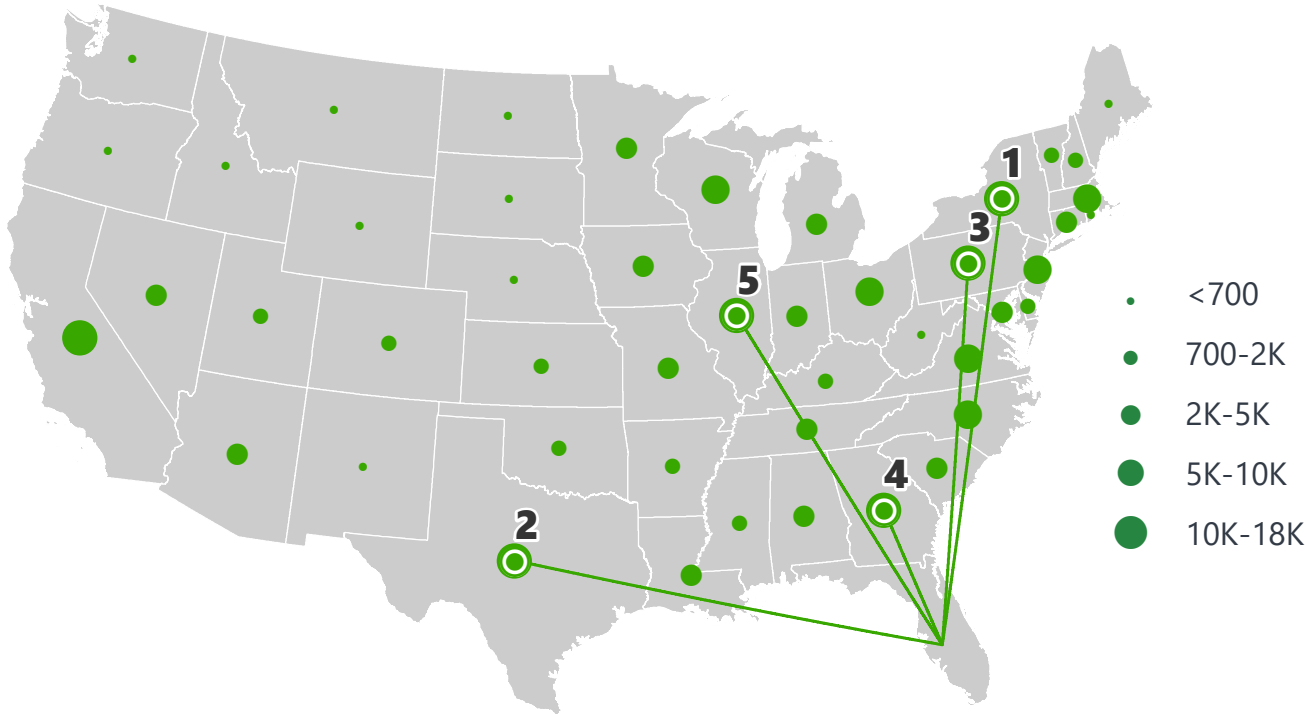


Warehouse, Distribution Center and Drayage Movements	\$ 39,445,223
Petroleum or Coal Products	\$ 28,864,590
Machinery	\$ 20,809,387
Farm Products	\$ 12,667,403
Chemicals or Allied Products	\$ 9,529,887

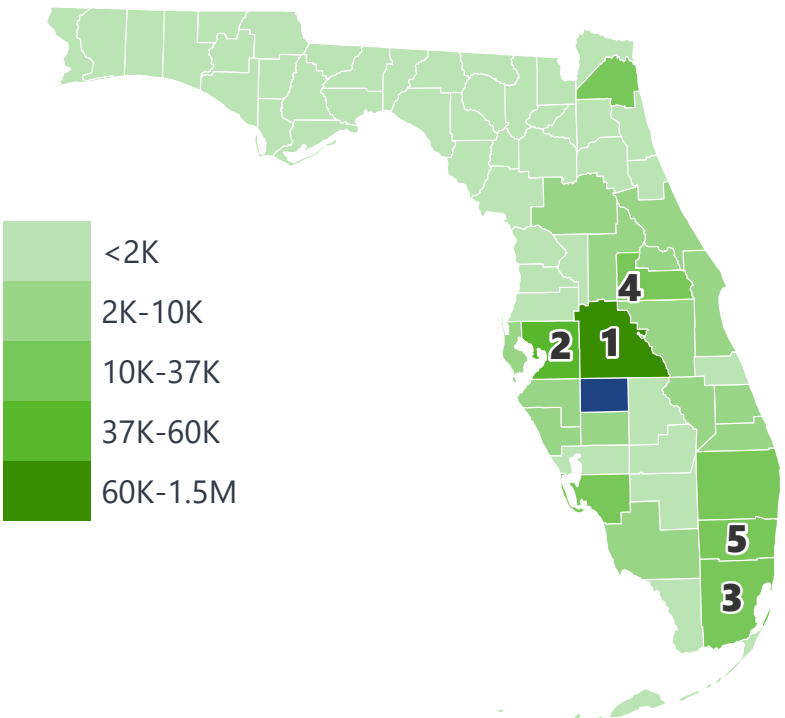
Farm Products	\$ 185,126,797
Nonmetallic Minerals	\$ 88,841,067
Lumber or Wood Products	\$ 36,898,371
Food or Kindred Products	\$ 23,709,139
Chemicals or Allied Products	\$ 8,451,719

HARDEE COUNTY EXPORTS AND IMPORTS

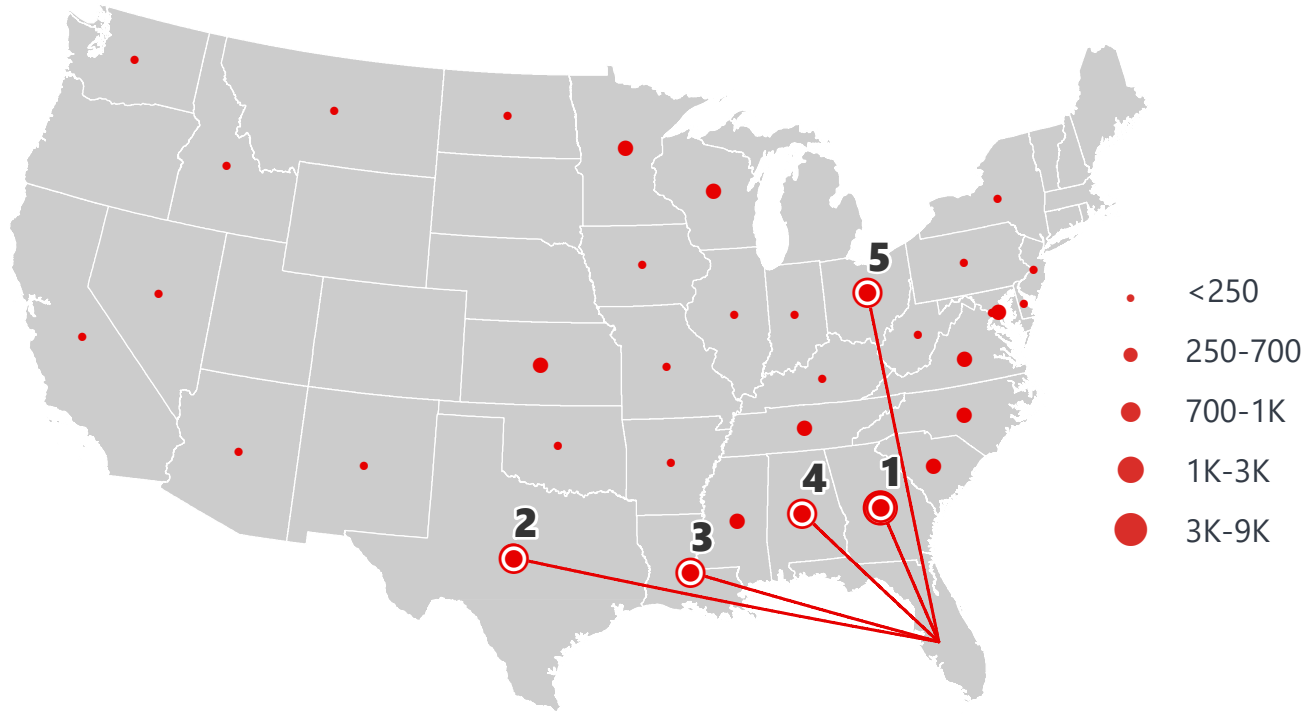
DOMESTIC EXPORTS (TONS)



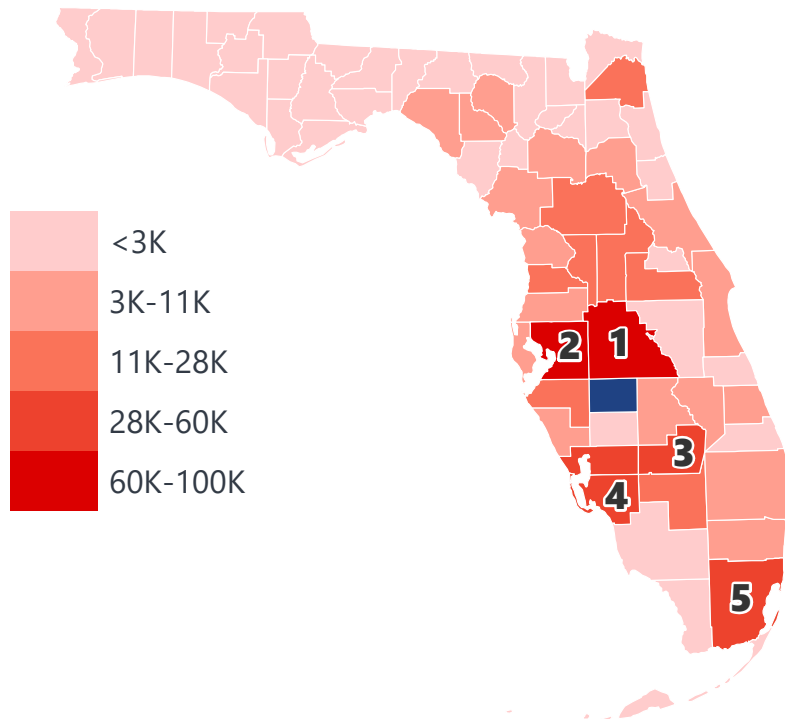
INTRASTATE EXPORTS (TONS)



DOMESTIC IMPORTS (TONS)



INTRASTATE IMPORTS (TONS)



DOMESTIC EXPORTS (TONNAGE)

1	New York	17,333
2	Texas	13,925
3	Pennsylvania	12,708
4	Georgia	12,608
5	Illinois	12,498

INTRASTATE EXPORTS (TONNAGE)

1	Polk	1,434,198
2	Hillsborough	61,397
3	Miami-Dade	36,165
4	Orange	29,840
5	Broward	27,314

DOMESTIC IMPORTS (TONNAGE)

1	Georgia	8,965
2	Texas	3,210
3	Louisiana	1,446
4	Alabama	1,392
5	Ohio	701

INTRASTATE IMPORTS (TONNAGE)

1	Polk	99,809
2	Hillsborough	88,240
3	Glades	59,154
4	Lee	49,175
5	Miami-Dade	33,533

HARDEE COUNTY FREIGHT INFRASTRUCTURE

Hillsborough

Manatee

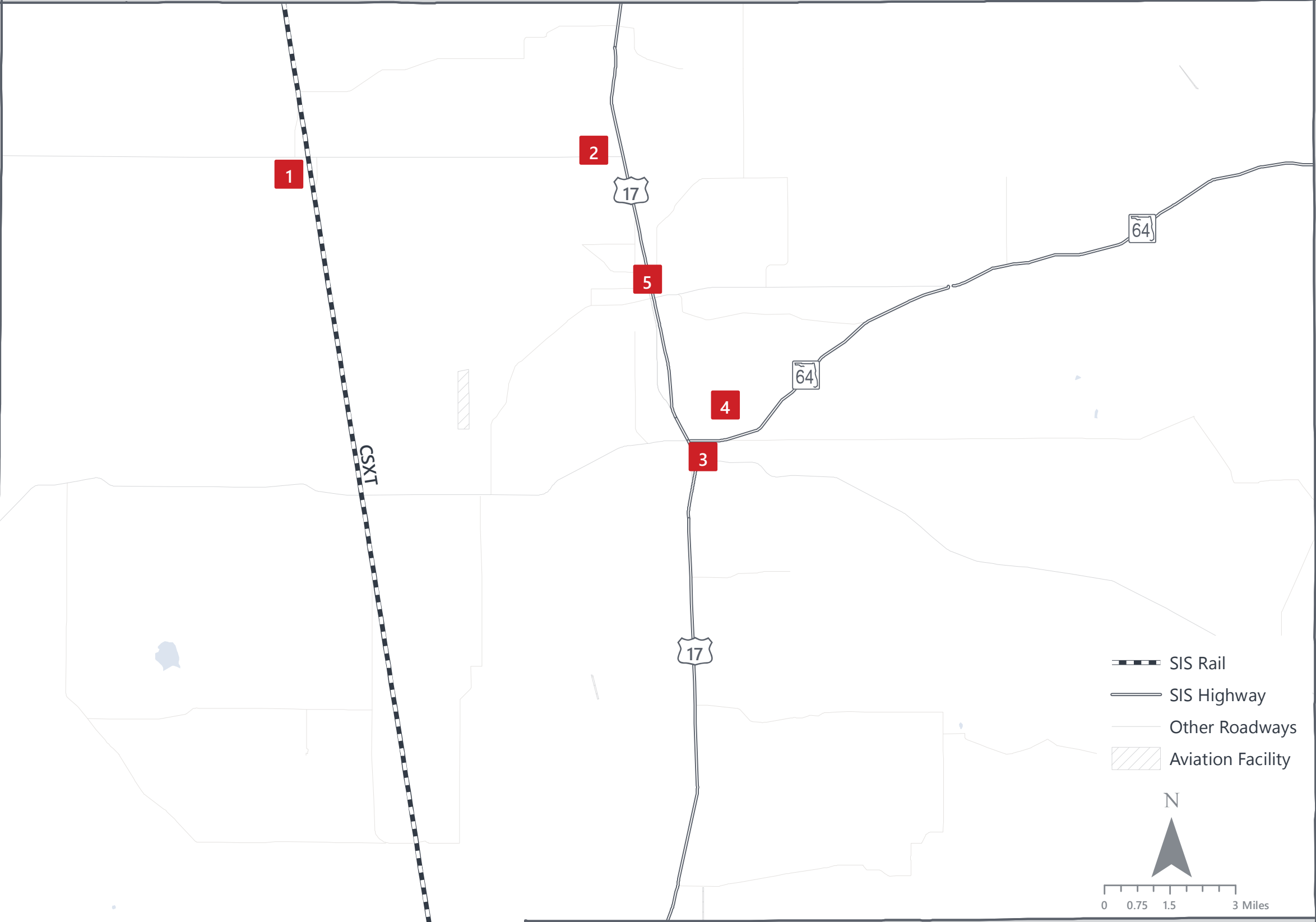
Highlands

Major Freight Parcels:

Includes parcels greater than 100K square feet floor area and are related to wholesale, retail, manufacturing, industrial, distribution centers, dairies, feed lots, utilities, mining, oil/gas lands and sewage/wastewater.

Polk

DeSoto



LARGEST FREIGHT EMPLOYERS

1	Mosaic Fertilizer	100-200
2	Pacer Marine Eng.	100-200
3	Mancini Packing	50-100
4	Howard Leasing	50-100
5	Oldcastle Lawn & Garden	0-50

MAJOR FREIGHT LAND USES

1.1 M SQ.FT Floor Area

17.17%	Warehousing and distribution centers
16.67%	Dairies, feed lots
16.03%	Fruit, vegetable and meat packing plants
13.66%	Minerals processing and construction material plants
11.42%	Light manufacturing

1.87 B SQ.FT LAND AREA

90.83%	Mining lands, petroleum lands, or gas lands
7.10%	Dairies, feed lots
0.74%	Utilities
0.38%	Lumber yards, sawmills, planing mills
0.25%	Minerals processing and construction material plants

Florida Department of Economic Opportunity, 2018
Florida Department of Revenue, 2019

MAJOR COUNTY COMMODITIES



IMPORTS



TOP COMMODITY by Tonnage, 2018 (relative to Florida)

FL Rank	Commodity	% Florida Share
41	Nonmetallic Minerals	0.35%
28	Machinery	0.19%
50	Clay, Concrete, Glass, Stone	0.17%
39	Chemicals or Allied Products	0.17%
42	Farm Products	0.13%

EXPORTS



FL Rank	Commodity	% Florida Share
10	Farm Products	2.89%
22	Nonmetallic Minerals	1.34%
33	Lumber or Wood Products	0.98%
26	Electrical Equipment	0.19%
32	Food or Kindred Products	0.15%

TOP COMMODITY by Value, 2018 (relative to Florida)

FL Rank	Commodity	% Florida Share
44	Nonmetallic Minerals	0.23%
45	Farm Products	0.15%
50	Clay, Concrete, Glass, Stone	0.12%
31	Machinery	0.10%
51	Petroleum or Coal Products	0.07%

FL Rank	Commodity	% Florida Share
6	Nonmetallic Minerals	5.86%
11	Farm Products	2.07%
37	Lumber or Wood Products	0.74%
34	Food or Kindred Products	0.15%
49	Waste or Scrap Materials	0.10%



TRANSPORTATION STATISTICS AND FREIGHT MOVEMENT BY MODE



113 K | Daily Truck Miles Traveled
- Planning Time Index
650 | Public Roadway Mileage



55 Miles | Distance from closest seaport
(Port Manatee)



16.15 | Class I Mainline Miles (CSX)
- Class II Mainline Miles
- Class III Mainline Miles



60 Miles | Distance from closest
airport (Sarasota/Bradenton
International Airport)

FLORIDA HIGHLIGHTS

3rd most populous US State

\$1T Gross Domestic Product

4th Largest US Economy and **17th Largest** Economy in World

Nation's **3rd largest** workforce

1 in 5 U.S. exporters are located in Florida

\$153B International Trade

1.76M jobs supported by Trade, Transportation and Utilities industry sector

1.25M jobs supported by Leisure and Hospitality industry sector

131M annual visitors

CAPITAL **TALLAHASSEE**

AREA (SQ. MILES) **53,624**

LARGEST CITY (SIZE) **JACKSONVILLE**

POPULATION (2019) **21,208,589**

ANNUAL POP GROWTH RATE (2010-2019) **1.4%**

EMPLOYMENT (2019) **8,884,065**

ANNUAL EMP GROWTH RATE (2010-2019) **2.8%**

*Bureau of Economic Business Research,
Bureau of Labor Statistics*

DOMESTIC IMPORTS

1	GEORGIA	\$44B
2	CALIFORNIA	\$29B
3	TEXAS	\$26B
4	ALABAMA	\$18B
5	ILLINOIS	\$18B

DOMESTIC EXPORTS

1	GEORGIA	\$22B
2	TEXAS	\$19B
3	CALIFORNIA	\$15B
4	NORTH CAROLINA	\$12B
5	NEW YORK	\$10B

INTERNATIONAL IMPORTS

1	CHINA	\$9.5B
2	JAPAN	\$6.5B
3	BRAZIL	\$6.4B
4	MEXICO	\$4.5B
5	CHILE	\$3.7B

INTERNATIONAL EXPORTS

1	BRAZIL	\$13.4B
2	COLOMBIA	\$4.2B
3	ARGENTINA	\$3.6B
4	DOMINICAN REPUBLIC	\$3.1B
5	CHILE	\$3B

TRANSPORTATION STATISTICS AND FREIGHT MOVEMENT BY MODE



83%
TONNAGE

71%
VALUE

123,104 Public roadway mileage
12,130 State Highway System (SHS) mileage
30.7M Daily truck miles traveled on SHS
98 Public truck parking facilities



3.5%
TONNAGE

2.9%
VALUE

15 Deepwater seaports
4.1M Twenty-foot equivalent units (TEUs)
16.8M Annual cruise passengers



6.7%
TONNAGE

1.8%
VALUE

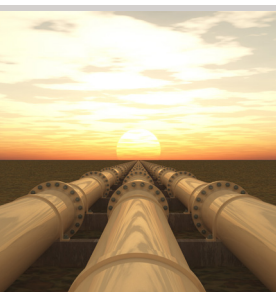
2,936 Miles of roads
6.9M Annual rail passenger traffic



0.1%
TONNAGE

5.4%
VALUE

129 Public use airports
20 Commercial service airports
2 Active spaceports



3.6%
TONNAGE

1%
VALUE

5,899 Miles of gas transmission and hazardous liquid pipelines



3.1%
TONNAGE

17.9%
VALUE

Includes shipments by multiple modes and by parcel delivery services, U.S. Postal Service, or couriers (capped at 150 pounds). This category is not limited to containerized or trailer-on-flatcar shipments.

FLORIDA COMMODITY FLOWS (2018-2045)



IMPORTS



WITHIN FL



EXPORTS

	2018	2045	2018	2045	2018	2045
TONNAGE	142M	190M	656M	761M	57M	103M
VALUE	\$321B	\$690B	\$402B	\$844B	\$180B	\$606B

Freight Analysis Framework (FAF) 4.5.1.



Rickey Fitzgerald
Manager, Freight & Multimodal Operations
 Florida Department of Transportation
 605 Suwannee Street, Tallahassee, FL 32399
 Rickey.Fitzgerald@dot.state.fl.us
 850.414.4702