

FREIGHT AND LOGISTICS OVERVIEW

FEBRUARY 2021

HAMILTON COUNTY



Mission: The department will provide a safe transportation system that ensures the mobility of people and goods, enhances economic prosperity, and preserves the quality of our environment and communities.

HAMILTON COUNTY HIGHLIGHTS

"PENINSULA WITHIN A PENINSULA"

AREA (SQ . MILES)

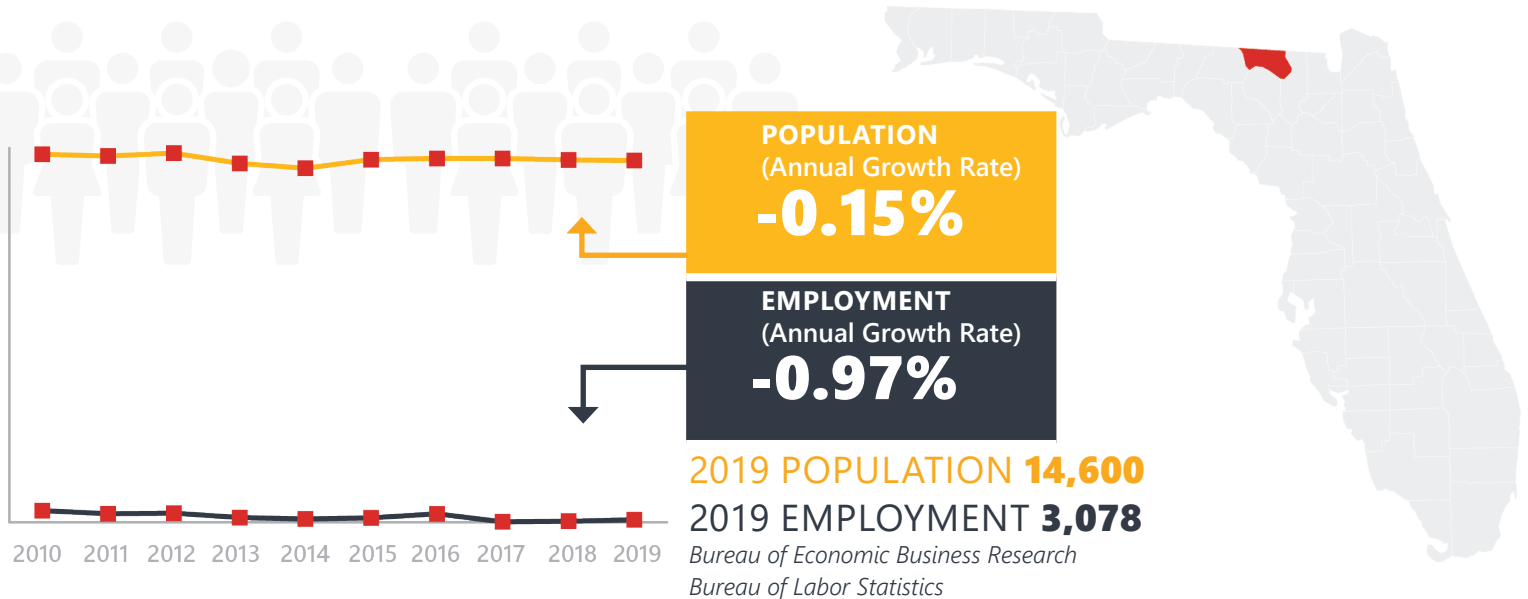
519

COUNTY SEAT

JASPER

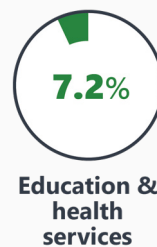
LARGEST CITY (SIZE)

JASPER



LARGEST INDUSTRY SECTORS BY EMPLOYMENT (2019)

Office of Economic and Demographic Research



FASTEST GROWING INDUSTRIES (2010-2019)

| | |
|--------------------------------------|-----|
| NATURAL RESOURCES AND MINING | 125 |
| TRADE, TRANSPORTATION, AND UTILITIES | 86 |
| FINANCIAL ACTIVITIES | 49 |
| EDUCATION AND HEALTH SERVICES | 29 |
| LEISURE AND HOSPITALITY | 12 |

Bureau of Labor Statistics

DID YOU KNOW?

Hamilton County is the only county in Florida that does not share a land connection to the rest of the state.

The county is separated from the rest of Florida by the Withlacoochee River on the west and the Suwannee River to the east and south. In the middle of the county is the Alapaha River, called the "River of Sand," which disappears underground during certain parts of the year leaving a dry, sandy riverbed.

The small town of White Springs is home to the first hub of the 235-mile Suwannee River Wilderness Trail.

COMMODITY FLOW HIGHLIGHTS



IMPORTS

WITHIN COUNTY

EXPORTS

2018

2045

2018

2045

2018

2045

| | | | | | | |
|----------|-------------|-------------|-----------|-----------|-------------|-------------|
| Tonnage: | 744.17 K | 834.70 K | 7.53 K | 8.04 K | 725.45 K | 949.86 K |
| Value: | \$ 237.56 M | \$ 293.91 M | \$ 2.41 M | \$ 2.57 M | \$ 327.77 M | \$ 429.33 M |



TOP COMMODITY by Tonnage, 2018



| | |
|--|---------|
| Nonmetallic Minerals | 395,933 |
| Chemicals or Allied Products | 153,631 |
| Clay, Concrete, Glass, Stone | 117,533 |
| Warehouse, Distribution Center and Drayage Movements | 38,991 |
| Petroleum or Coal Products | 23,725 |

| | |
|--|---------|
| Chemicals or Allied Products | 564,881 |
| Lumber or Wood Products | 70,779 |
| Waste or Scrap Materials | 34,301 |
| Farm Products | 33,253 |
| Warehouse, Distribution Center and Drayage Movements | 17,009 |



TOP COMMODITY by Value, 2018

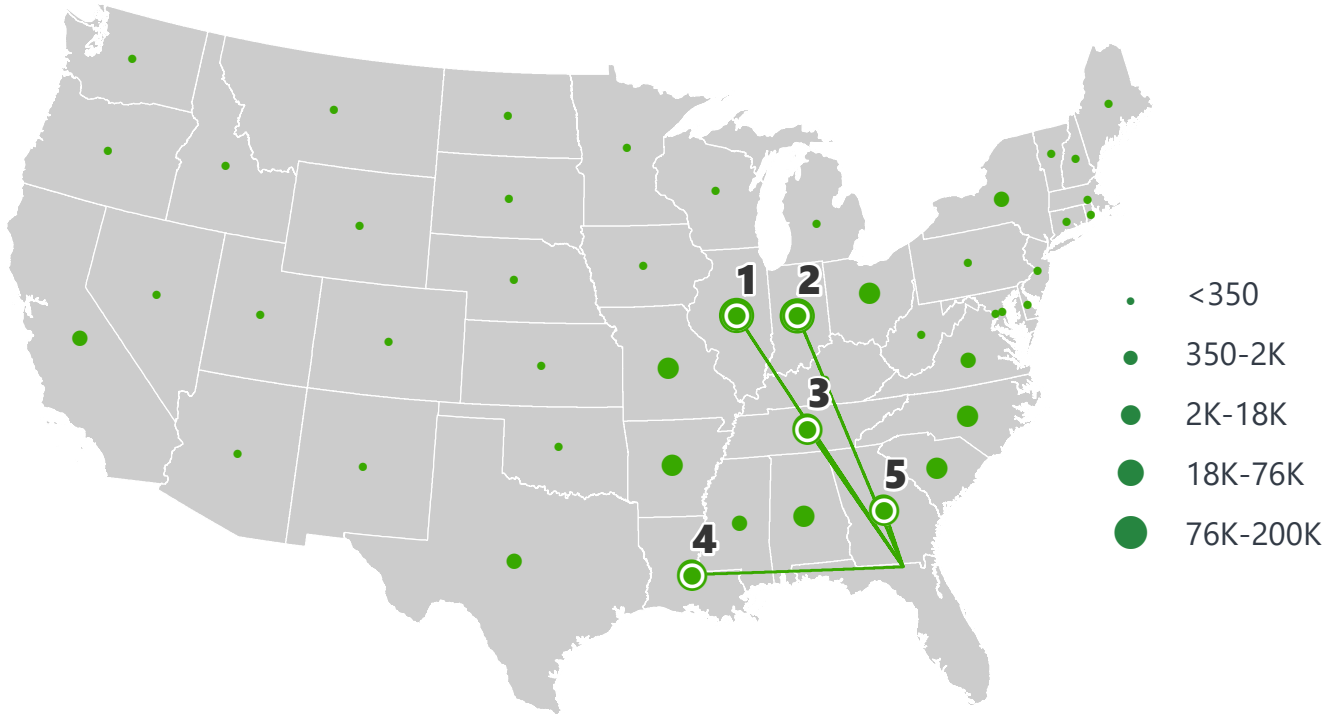


| | |
|--|----------------|
| Warehouse, Distribution Center and Drayage Movements | \$ 128,893,292 |
| Chemicals or Allied Products | \$ 53,912,857 |
| Nonmetallic Minerals | \$ 15,490,023 |
| Clay, Concrete, Glass, Stone | \$ 14,081,741 |
| Petroleum or Coal Products | \$ 13,925,703 |

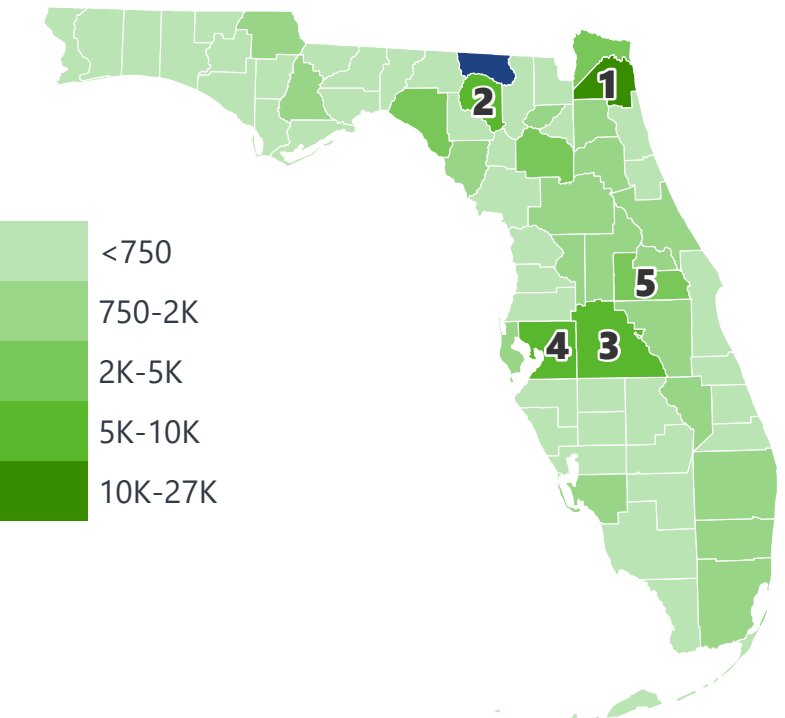
| | |
|--|----------------|
| Chemicals or Allied Products | \$ 187,007,752 |
| Warehouse, Distribution Center and Drayage Movements | \$ 78,392,229 |
| Farm Products | \$ 35,309,265 |
| Lumber or Wood Products | \$ 12,391,754 |
| Waste or Scrap Materials | \$ 8,577,565 |

HAMILTON COUNTY EXPORTS AND IMPORTS

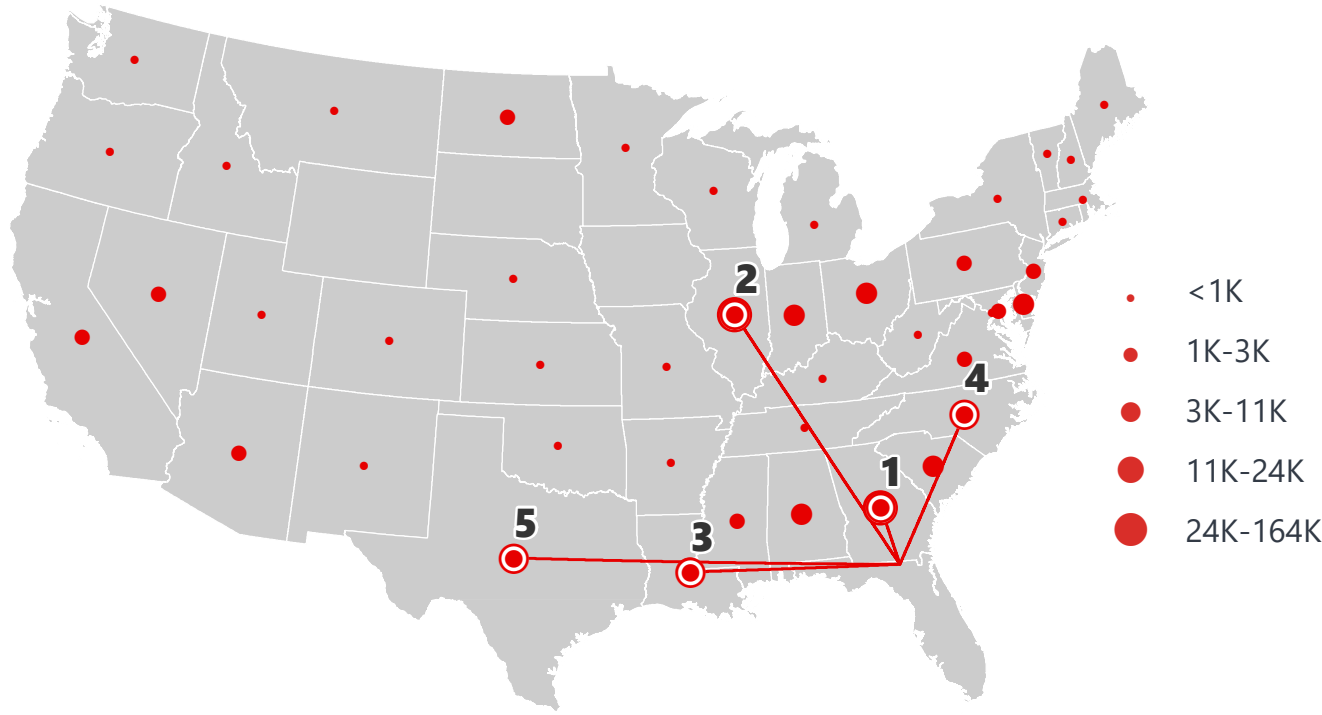
DOMESTIC EXPORTS (TONS)



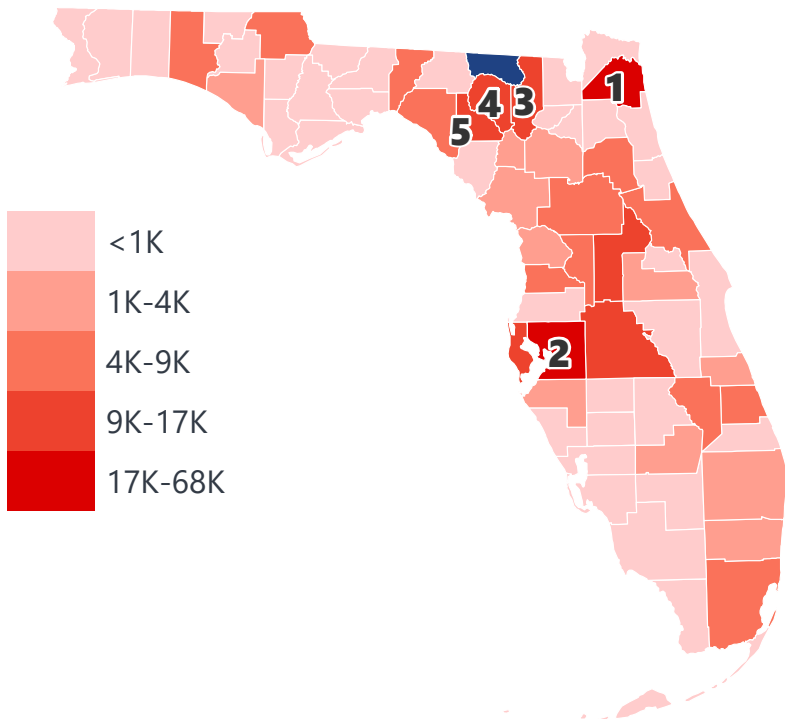
INTRASTATE EXPORTS (TONS)



DOMESTIC IMPORTS (TONS)



INTRASTATE IMPORTS (TONS)



DOMESTIC EXPORTS (TONNAGE)

| | | |
|---|-----------|---------|
| 1 | Illinois | 197,541 |
| 2 | Indiana | 122,707 |
| 3 | Tennessee | 76,357 |
| 4 | Louisiana | 48,217 |
| 5 | Georgia | 42,221 |

INTRASTATE EXPORTS (TONNAGE)

| | | |
|---|--------------|--------|
| 1 | Duval | 26,099 |
| 2 | Suwannee | 10,196 |
| 3 | Polk | 6,774 |
| 4 | Hillsborough | 6,632 |
| 5 | Orange | 4,793 |

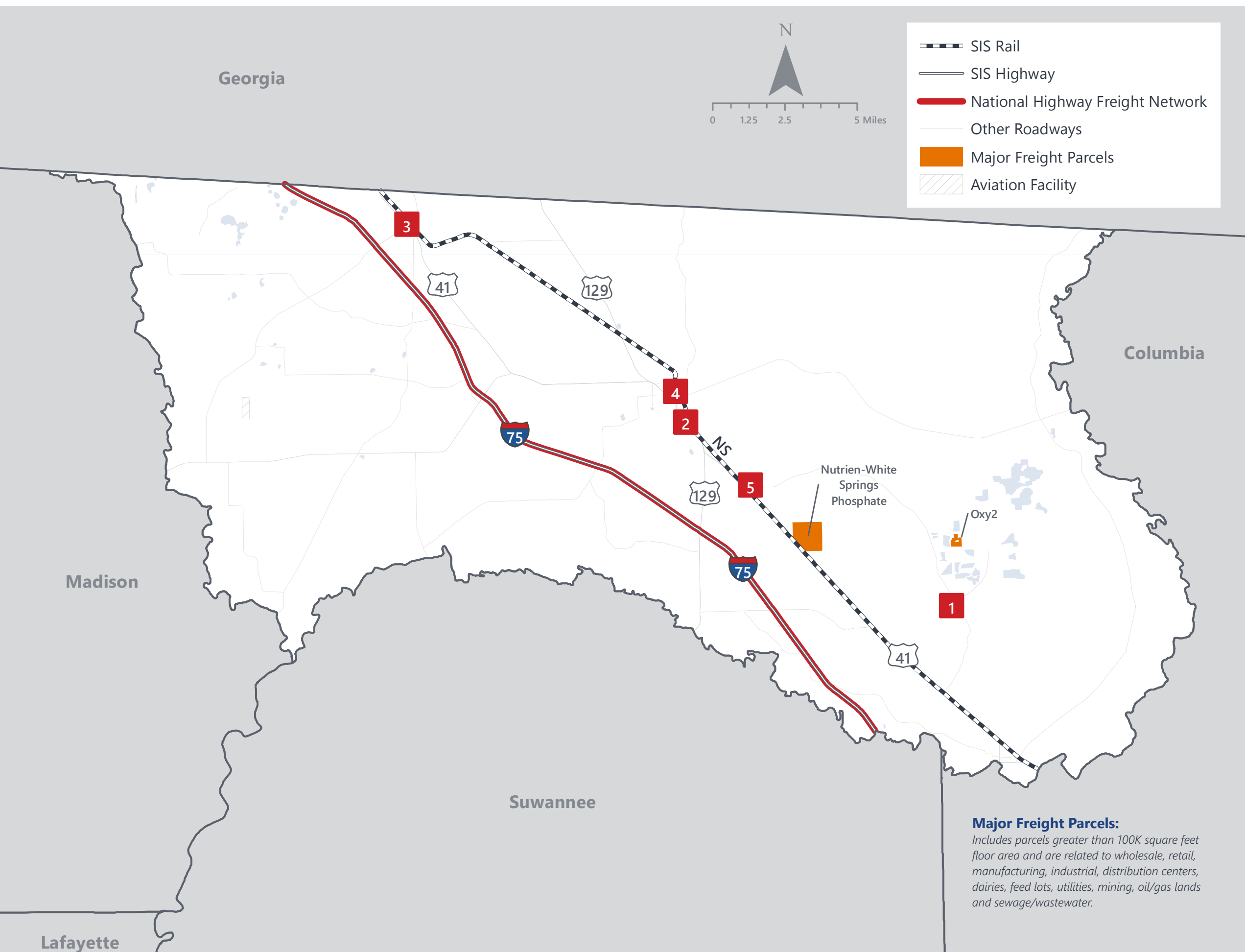
DOMESTIC IMPORTS (TONNAGE)

| | | |
|---|----------------|---------|
| 1 | Georgia | 163,275 |
| 2 | Illinois | 157,826 |
| 3 | Louisiana | 23,889 |
| 4 | North Carolina | 11,109 |
| 5 | Texas | 9,662 |

INTRASTATE IMPORTS (TONNAGE)

| | | |
|---|--------------|--------|
| 1 | Duval | 67,794 |
| 2 | Hillsborough | 55,560 |
| 3 | Columbia | 16,698 |
| 4 | Suwannee | 16,011 |
| 5 | Lafayette | 12,366 |

HAMILTON COUNTY FREIGHT INFRASTRUCTURE



LARGEST FREIGHT EMPLOYERS

| | | |
|---|-----------------------|---------|
| 1 | PCS Phosphate | 500-600 |
| 2 | Taylor Industrial | 0-50 |
| 3 | USPS | 0-50 |
| 4 | USPS | 0-50 |
| 5 | Ascent Precision Gear | 0-50 |

MAJOR FREIGHT LAND USES

1.3 M SQ.FT Floor Area

| | |
|--------|--|
| 70.13% | Minerals processing and construction material plants |
| 23.60% | Warehousing and distribution centers |
| 3.01% | Light manufacturing |
| 2.14% | Other food processing |
| 0.59% | Utilities |

1.74 B SQ.FT LAND AREA

| | |
|--------|--|
| 97.60% | Minerals processing and construction material plants |
| 1.15% | Mining lands, petroleum lands, or gas lands |
| 0.88% | Utilities |
| 0.16% | Warehousing and distribution centers |
| 0.09% | Light manufacturing |

MAJOR COUNTY COMMODITIES



IMPORTS



TOP COMMODITY by Tonnage, 2018 (relative to Florida)

| FL Rank | Commodity | % Florida Share |
|---------|------------------------------|-----------------|
| 15 | Chemicals or Allied Products | 0.99% |
| 6 | Metallic Ores | 0.47% |
| 43 | Nonmetallic Minerals | 0.33% |
| 45 | Clay, Concrete, Glass, Stone | 0.28% |
| 46 | Forest Products | 0.12% |

EXPORTS



| FL Rank | Commodity | % Florida Share |
|---------|------------------------------|-----------------|
| 5 | Chemicals or Allied Products | 4.16% |
| 37 | Lumber or Wood Products | 0.76% |
| 43 | Farm Products | 0.24% |
| 19 | Transportation Equipment | 0.18% |
| 47 | Waste or Scrap Materials | 0.13% |

TOP COMMODITY by Value, 2018 (relative to Florida)

| FL Rank | Commodity | % Florida Share |
|---------|--|-----------------|
| 23 | Nonmetallic Minerals | 0.84% |
| 48 | Clay, Concrete, Glass, Stone | 0.19% |
| 35 | Chemicals or Allied Products | 0.19% |
| 42 | Warehouse, Distribution Center and Drayage Movements | 0.17% |
| 46 | Forest Products | 0.11% |

| FL Rank | Commodity | % Florida Share |
|---------|--|-----------------|
| 13 | Chemicals or Allied Products | 1.12% |
| 35 | Farm Products | 0.40% |
| 50 | Lumber or Wood Products | 0.25% |
| 47 | Waste or Scrap Materials | 0.13% |
| 26 | Warehouse, Distribution Center and Drayage Movements | 0.11% |



TRANSPORTATION STATISTICS AND FREIGHT MOVEMENT BY MODE



310 K | Daily Truck Miles Traveled
1.17 | Planning Time Index
665 | Public Roadway Mileage



92 Miles | Distance from closest seaport (JAXPORT)



31.61 | Class I Mainline Miles (NS)
- Class II Mainline Miles
- Class III Mainline Miles



98 Miles | Distance from closest airport (Jacksonville International Airport)

FLORIDA HIGHLIGHTS

3rd most populous US State

\$1T Gross Domestic Product

4th Largest US Economy and **17th Largest** Economy in World

Nation's **3rd largest** workforce

1 in 5 U.S. exporters are located in Florida

\$153B International Trade

1.76M jobs supported by Trade, Transportation and Utilities industry sector

1.25M jobs supported by Leisure and Hospitality industry sector

131M annual visitors

CAPITAL **TALLAHASSEE**

AREA (SQ. MILES) **53,624**

LARGEST CITY (SIZE) **JACKSONVILLE**

POPULATION (2019) **21,208,589**

ANNUAL POP GROWTH RATE (2010-2019) **1.4%**

EMPLOYMENT (2019) **8,884,065**

ANNUAL EMP GROWTH RATE (2010-2019) **2.8%**

*Bureau of Economic Business Research,
Bureau of Labor Statistics*

DOMESTIC IMPORTS

| | | |
|----------|-------------------|-------|
| 1 | GEORGIA | \$44B |
| 2 | CALIFORNIA | \$29B |
| 3 | TEXAS | \$26B |
| 4 | ALABAMA | \$18B |
| 5 | ILLINOIS | \$18B |

DOMESTIC EXPORTS

| | | |
|----------|-----------------------|-------|
| 1 | GEORGIA | \$22B |
| 2 | TEXAS | \$19B |
| 3 | CALIFORNIA | \$15B |
| 4 | NORTH CAROLINA | \$12B |
| 5 | NEW YORK | \$10B |

INTERNATIONAL IMPORTS

| | | |
|----------|---------------|--------|
| 1 | CHINA | \$9.5B |
| 2 | JAPAN | \$6.5B |
| 3 | BRAZIL | \$6.4B |
| 4 | MEXICO | \$4.5B |
| 5 | CHILE | \$3.7B |

INTERNATIONAL EXPORTS

| | | |
|----------|---------------------------|---------|
| 1 | BRAZIL | \$13.4B |
| 2 | COLOMBIA | \$4.2B |
| 3 | ARGENTINA | \$3.6B |
| 4 | DOMINICAN REPUBLIC | \$3.1B |
| 5 | CHILE | \$3B |

TRANSPORTATION STATISTICS AND FREIGHT MOVEMENT BY MODE



83%
TONNAGE

71%
VALUE

123,104 Public roadway mileage
12,130 State Highway System (SHS) mileage
30.7M Daily truck miles traveled on SHS
98 Public truck parking facilities



3.5%
TONNAGE

2.9%
VALUE

15 Deepwater seaports
4.1M Twenty-foot equivalent units (TEUs)
16.8M Annual cruise passengers



6.7%
TONNAGE

1.8%
VALUE

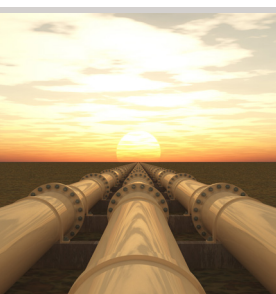
2,936 Miles of roads
6.9M Annual rail passenger traffic



0.1%
TONNAGE

5.4%
VALUE

129 Public use airports
20 Commercial service airports
2 Active spaceports



3.6%
TONNAGE

1%
VALUE

5,899 Miles of gas transmission and hazardous liquid pipelines



3.1%
TONNAGE

17.9%
VALUE

Includes shipments by multiple modes and by parcel delivery services, U.S. Postal Service, or couriers (capped at 150 pounds). This category is not limited to containerized or trailer-on-flatcar shipments.

FLORIDA COMMODITY FLOWS (2018-2045)



IMPORTS



WITHIN FL



EXPORTS

| | 2018 | 2045 | 2018 | 2045 | 2018 | 2045 |
|---------|--------|--------|--------|--------|--------|--------|
| TONNAGE | 142M | 190M | 656M | 761M | 57M | 103M |
| VALUE | \$321B | \$690B | \$402B | \$844B | \$180B | \$606B |

Freight Analysis Framework (FAF) 4.5.1.



Rickey Fitzgerald
 Manager, Freight & Multimodal Operations
 Florida Department of Transportation
 605 Suwannee Street, Tallahassee, FL 32399
 Rickey.Fitzgerald@dot.state.fl.us
 850.414.4702