

FREIGHT AND LOGISTICS OVERVIEW

FEBRUARY 2021

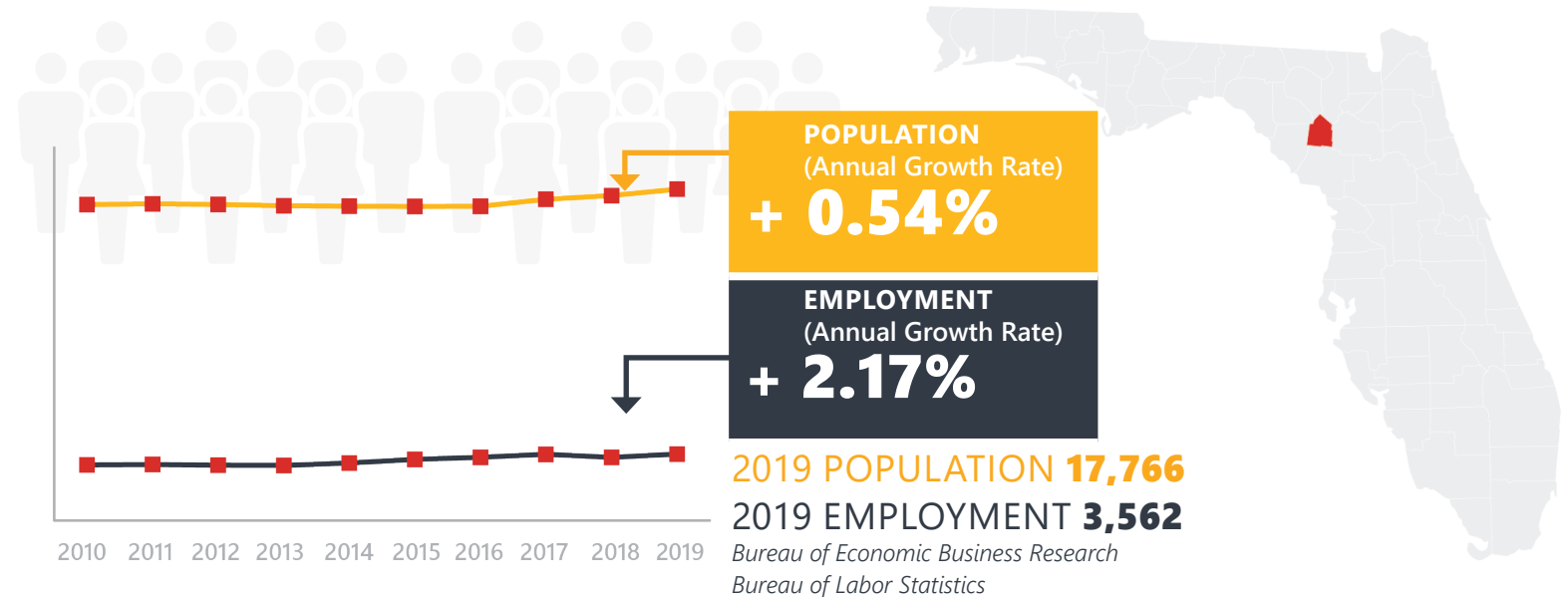
GILCHRIST COUNTY



Mission: The department will provide a safe transportation system that ensures the mobility of people and goods, enhances economic prosperity, and preserves the quality of our environment and communities.

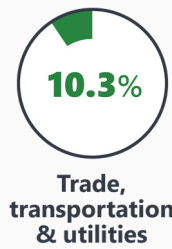
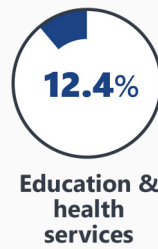
GILCHRIST COUNTY HIGHLIGHTS

"SPRINGS CAPITAL OF THE WORLD"		AREA (SQ . MILES)	356
COUNTY SEAT	TRENTON	LARGEST CITY (SIZE)	TRENTON



LARGEST INDUSTRY SECTORS BY EMPLOYMENT (2019)

Office of Economic and Demographic Research



FASTEST GROWING INDUSTRIES (2010-2019)

NATURAL RESOURCES AND MINING	JOBS ADDED	242
MANUFACTURING		121
LEISURE AND HOSPITALITY		121
CONSTRUCTION		85
OTHER SERVICES		57

Bureau of Labor Statistics

DID YOU KNOW?

Gilchrist County is Florida's newest and smallest county.

There is only one traffic light in the entire county, located in the center of Trenton.

The City of Fanning Springs is known as "Gateway to the Suwannee River" and is one of the rare Florida cities that span two counties: Levy and Gilchrist.

COMMODITY FLOW HIGHLIGHTS



IMPORTS

WITHIN COUNTY

EXPORTS

	2018	2045	2018	2045	2018	2045
Tonnage:	0.42 M	0.42 M	5 K	1.08 K	0.63 M	0.56 M
Value:	\$ 0.1 B	\$ 0.13 B	\$ 709.03 K	\$ 308.18 K	\$ 0.23 B	\$ 0.29 B



TOP COMMODITY by Tonnage, 2018

Nonmetallic Minerals	233,590
Clay, Concrete, Glass, Stone	56,987
Lumber or Wood Products	47,936
Petroleum or Coal Products	38,989
Warehouse, Distribution Center and Drayage Movements	24,713



Clay, Concrete, Glass, Stone	293,781
Farm Products	238,366
Forest Products	47,014
Lumber or Wood Products	31,289
Waste or Scrap Materials	15,006



TOP COMMODITY by Value, 2018

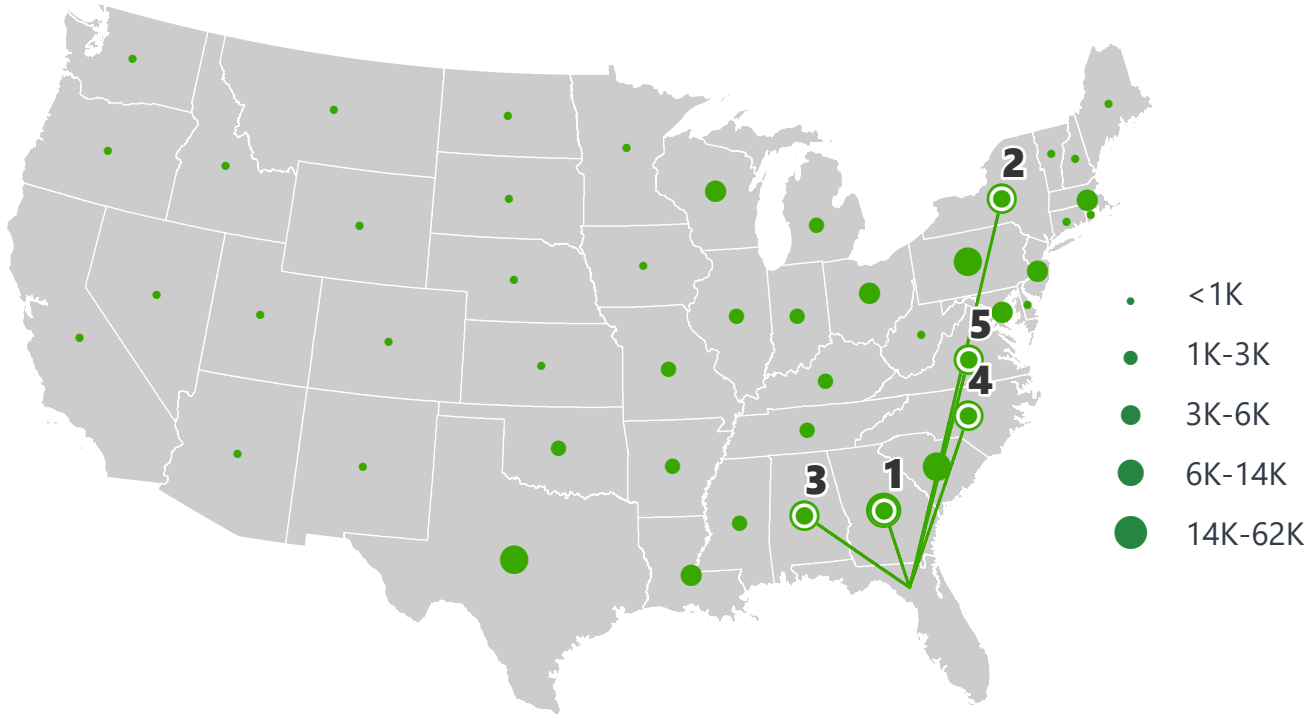
Warehouse, Distribution Center and Drayage Movements	\$ 35,397,721
Petroleum or Coal Products	\$ 22,109,811
Lumber or Wood Products	\$ 9,207,018
Transportation Equipment	\$ 7,259,814
Clay, Concrete, Glass, Stone	\$ 6,613,803



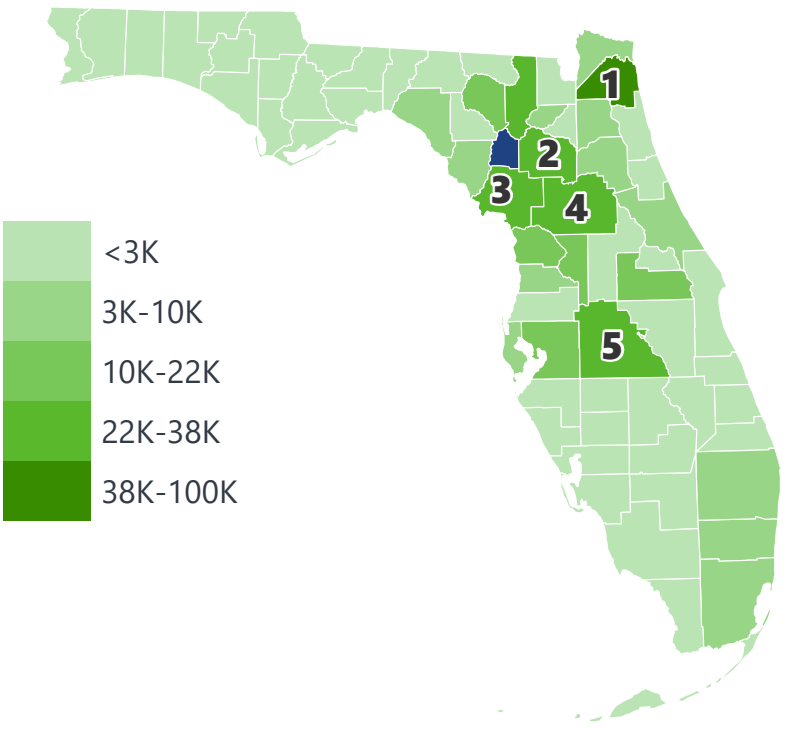
Farm Products	\$ 128,548,604
Forest Products	\$ 59,853,731
Clay, Concrete, Glass, Stone	\$ 25,996,469
Warehouse, Distribution Center and Drayage Movements	\$ 5,789,728
Lumber or Wood Products	\$ 5,697,408

GILCHRIST COUNTY EXPORTS AND IMPORTS

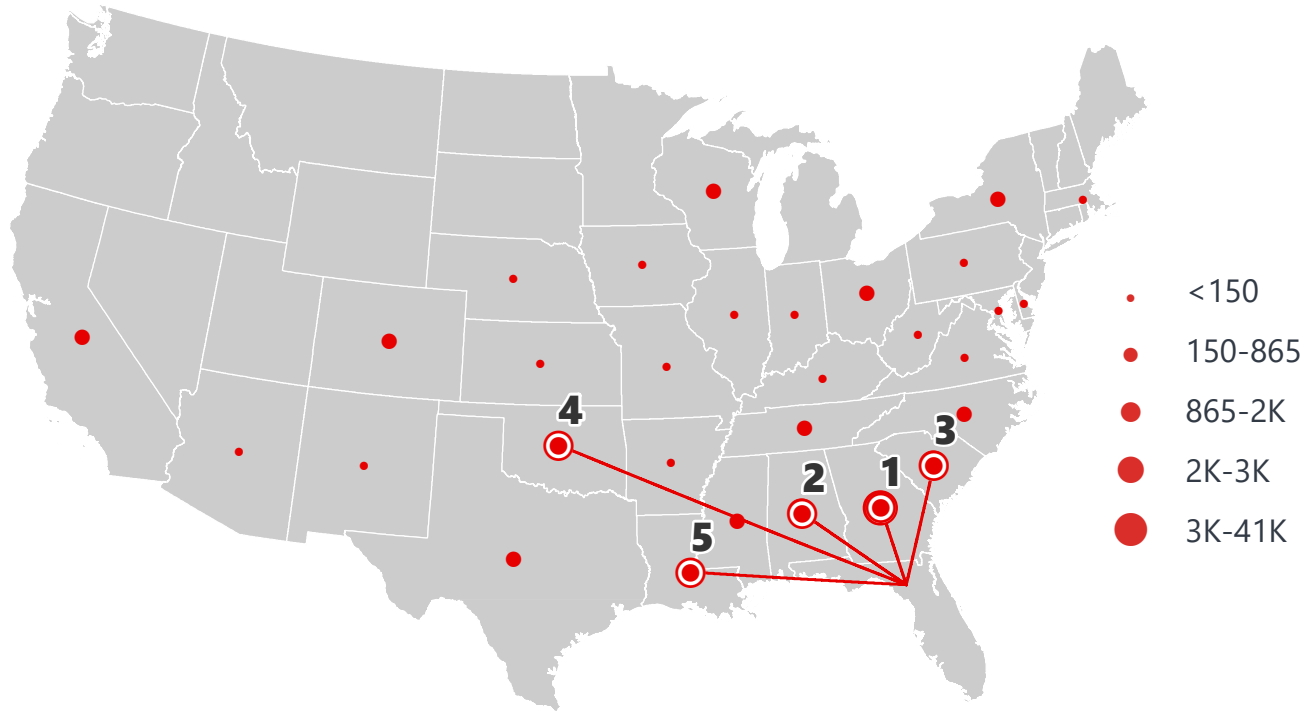
DOMESTIC EXPORTS (TONS)



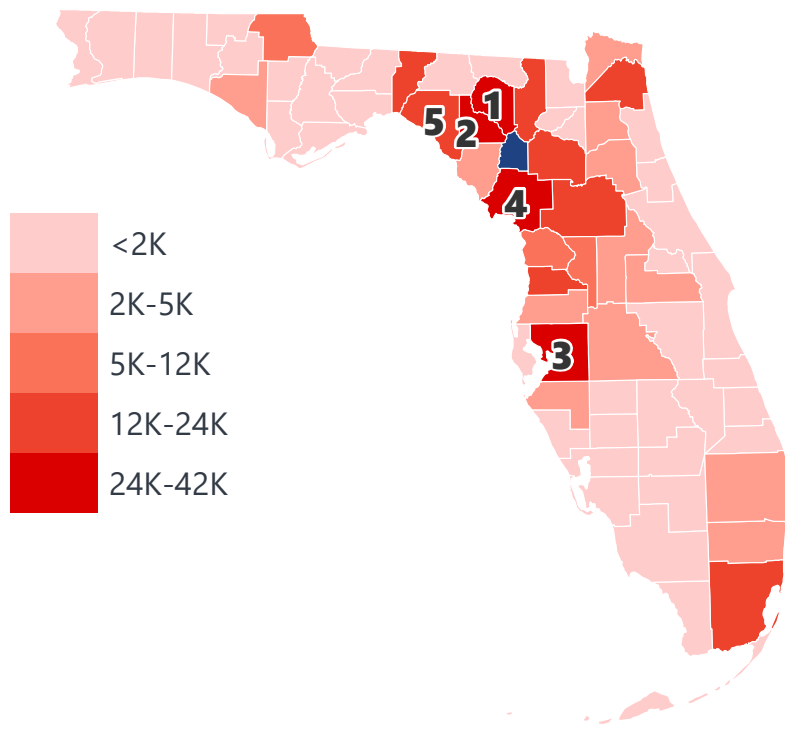
INTRASTATE EXPORTS (TONS)



DOMESTIC IMPORTS (TONS)



INTRASTATE IMPORTS (TONS)



DOMESTIC EXPORTS (TONNAGE)

1	Georgia	61,676
2	New York	14,313
3	Alabama	13,207
4	North Carolina	12,162
5	Virginia	9,072

INTRASTATE EXPORTS (TONNAGE)

1	Duval	98,458
2	Alachua	38,369
3	Levy	33,928
4	Marion	29,816
5	Polk	27,753

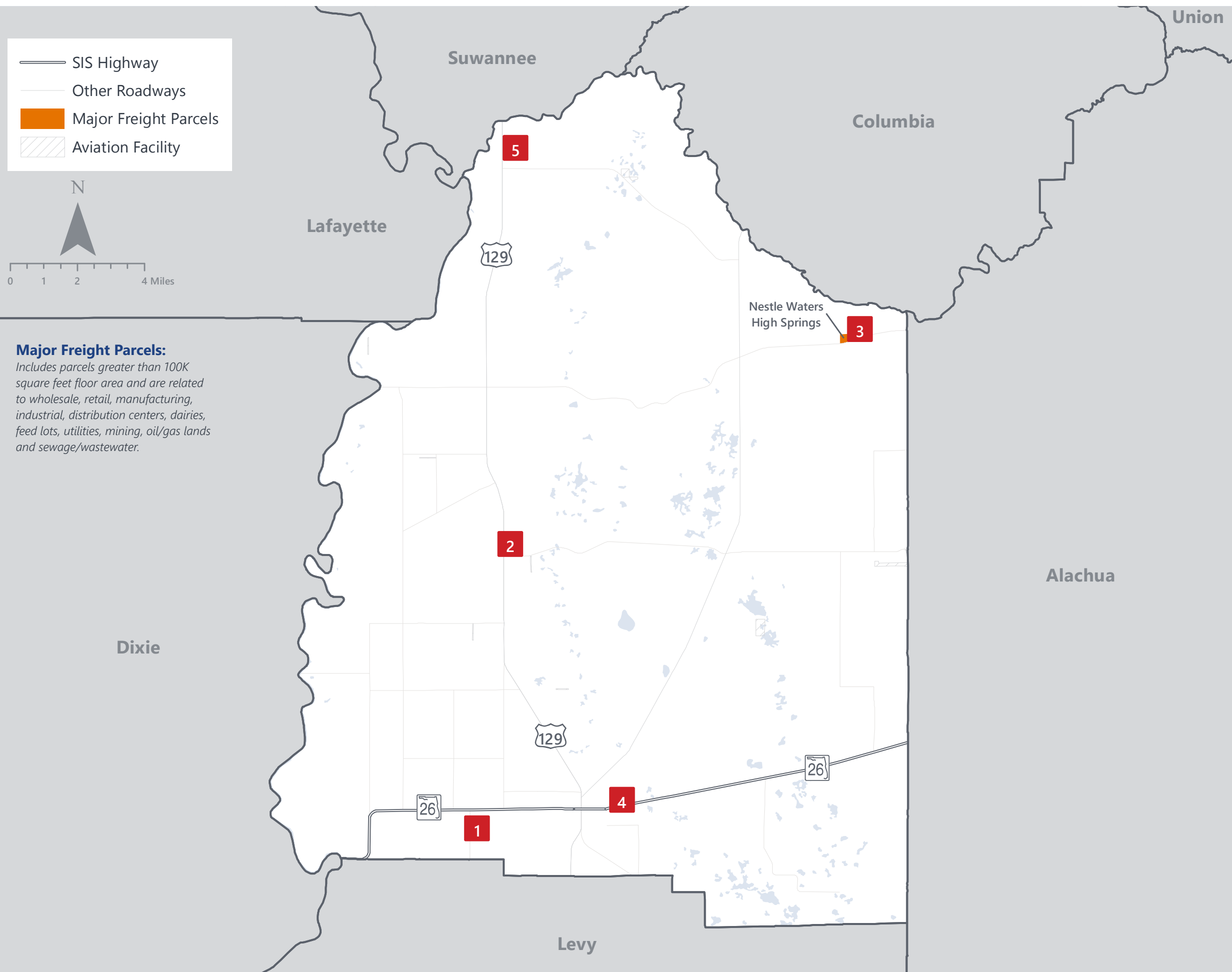
DOMESTIC IMPORTS (TONNAGE)

1	Georgia	40,189
2	Alabama	3,367
3	South Carolina	3,250
4	Oklahoma	1,967
5	Louisiana	1,873

INTRASTATE IMPORTS (TONNAGE)

1	Suwannee	41,029
2	Lafayette	32,857
3	Hillsborough	28,100
4	Levy	26,601
5	Taylor	23,956

GILCHRIST COUNTY FREIGHT INFRASTRUCTURE



LARGEST FREIGHT EMPLOYERS

1	Alliance Dairies	100-200
2	North Florida Holsteins	100-200
3	Coca-Cola Company	100-200
4	Tri County Metals	50-100
5	Alliance Branford	0-50

MAJOR FREIGHT LAND USES

0.9 M SQ.FT Floor Area

49.67%	Light manufacturing
23.58%	Dairies, feed lots
19.64%	Warehousing and distribution centers
3.75%	Utilities
3.21%	Minerals processing and construction material plants

229.5 M SQ.FT LAND AREA

94.37%	Dairies, feed lots
2.29%	Utilities
1.53%	Light manufacturing
1.28%	Warehousing and distribution centers
0.36%	Minerals processing and construction material plants

MAJOR COUNTY COMMODITIES



IMPORTS



TOP COMMODITY by Tonnage, 2018 (relative to Florida)

FL Rank	Commodity	% Florida Share
40	Forest Products	0.41%
40	Lumber or Wood Products	0.36%
49	Nonmetallic Minerals	0.19%
51	Clay, Concrete, Glass, Stone	0.14%
56	Warehouse, Distribution Center and Drayage Movements	0.06%

EXPORTS



FL Rank	Commodity	% Florida Share
1	Forest Products	24.49%
15	Farm Products	1.71%
34	Clay, Concrete, Glass, Stone	0.60%
51	Lumber or Wood Products	0.34%
35	Fabricated Metal Products	0.11%

TOP COMMODITY by Value, 2018 (relative to Florida)

FL Rank	Commodity	% Florida Share
40	Forest Products	0.38%
49	Nonmetallic Minerals	0.15%
48	Lumber or Wood Products	0.12%
51	Clay, Concrete, Glass, Stone	0.09%
50	Farm Products	0.07%

FL Rank	Commodity	% Florida Share
1	Forest Products	24.20%
18	Farm Products	1.44%
38	Clay, Concrete, Glass, Stone	0.34%
57	Lumber or Wood Products	0.11%
39	Fabricated Metal Products	0.07%



TRANSPORTATION STATISTICS AND FREIGHT MOVEMENT BY MODE



20 K | Daily Truck Miles Traveled
- Planning Time Index
578 | Public Roadway Mileage



108 Miles | Distance from closest seaport
(JAXPORT)



- Class I Mainline Miles
- Class II Mainline Miles
- Class III Mainline Miles



42 Miles | Distance from closest airport
(Gainesville Regional Airport)

FLORIDA HIGHLIGHTS

3rd most populous US State

\$1T Gross Domestic Product

4th Largest US Economy and **17th Largest** Economy in World

Nation's **3rd largest** workforce

1 in 5 U.S. exporters are located in Florida

\$153B International Trade

1.76M jobs supported by Trade, Transportation and Utilities industry sector

1.25M jobs supported by Leisure and Hospitality industry sector

131M annual visitors

CAPITAL **TALLAHASSEE**

AREA
(SQ. MILES) **53,624**

LARGEST
CITY (SIZE) **JACKSONVILLE**

POPULATION
(2019) **21,208,589**

ANNUAL POP
GROWTH RATE
(2010-2019) **1.4%**

EMPLOYMENT
(2019) **8,884,065**

ANNUAL EMP
GROWTH RATE
(2010-2019) **2.8%**

*Bureau of Economic Business Research,
Bureau of Labor Statistics*

DOMESTIC IMPORTS

1	GEORGIA	\$44B
2	CALIFORNIA	\$29B
3	TEXAS	\$26B
4	ALABAMA	\$18B
5	ILLINOIS	\$18B

DOMESTIC EXPORTS

1	GEORGIA	\$22B
2	TEXAS	\$19B
3	CALIFORNIA	\$15B
4	NORTH CAROLINA	\$12B
5	NEW YORK	\$10B

INTERNATIONAL IMPORTS

1	CHINA	\$9.5B
2	JAPAN	\$6.5B
3	BRAZIL	\$6.4B
4	MEXICO	\$4.5B
5	CHILE	\$3.7B

INTERNATIONAL EXPORTS

1	BRAZIL	\$13.4B
2	COLOMBIA	\$4.2B
3	ARGENTINA	\$3.6B
4	DOMINICAN REPUBLIC	\$3.1B
5	CHILE	\$3B

TRANSPORTATION STATISTICS AND FREIGHT MOVEMENT BY MODE



83%
TONNAGE

71%
VALUE

123,104 Public roadway mileage
12,130 State Highway System (SHS) mileage
30.7M Daily truck miles traveled on SHS
98 Public truck parking facilities



3.5%
TONNAGE

2.9%
VALUE

15 Deepwater seaports
4.1M Twenty-foot equivalent units (TEUs)
16.8M Annual cruise passengers



6.7%
TONNAGE

1.8%
VALUE

2,936 Miles of roads
6.9M Annual rail passenger traffic



0.1%
TONNAGE

5.4%
VALUE

129 Public use airports
20 Commercial service airports
2 Active spaceports



3.6%
TONNAGE

1%
VALUE

5,899 Miles of gas transmission and hazardous liquid pipelines



3.1%
TONNAGE

17.9%
VALUE

Includes shipments by multiple modes and by parcel delivery services, U.S. Postal Service, or couriers (capped at 150 pounds). This category is not limited to containerized or trailer-on-flatcar shipments.

FLORIDA COMMODITY FLOWS (2018-2045)



IMPORTS



WITHIN FL



EXPORTS

	2018	2045	2018	2045	2018	2045
TONNAGE	142M	190M	656M	761M	57M	103M
VALUE	\$321B	\$690B	\$402B	\$844B	\$180B	\$606B

Freight Analysis Framework (FAF) 4.5.1.



Rickey Fitzgerald
Manager, Freight & Multimodal Operations
 Florida Department of Transportation
 605 Suwannee Street, Tallahassee, FL 32399
 Rickey.Fitzgerald@dot.state.fl.us
 850.414.4702