

FREIGHT AND LOGISTICS OVERVIEW

FEBRUARY 2021

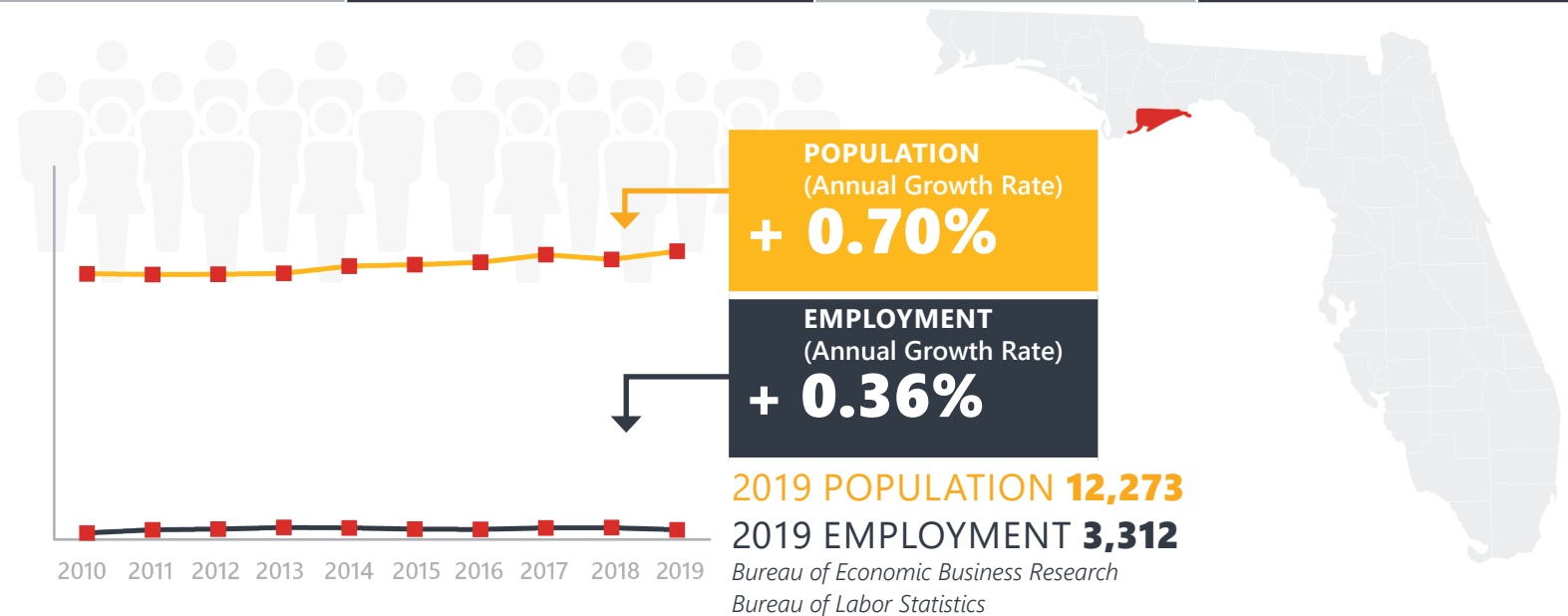
FRANKLIN COUNTY



Mission: The department will provide a safe transportation system that ensures the mobility of people and goods, enhances economic prosperity, and preserves the quality of our environment and communities.

FRANKLIN COUNTY HIGHLIGHTS

"FORGOTTEN COAST"		AREA (SQ . MILES)	1,027
COUNTY SEAT	APALACHICOLA	LARGEST CITY (SIZE)	APALACHICOLA

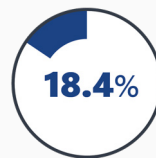


LARGEST INDUSTRY SECTORS BY EMPLOYMENT (2019)

Office of Economic and Demographic Research



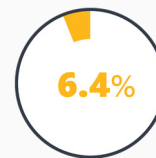
Leisure & hospitality



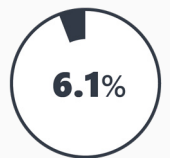
Trade, transportation & utilities



Education & health services



Financial activities



Construction

FASTEST GROWING INDUSTRIES (2010-2019)

CONSTRUCTION	JOBS ADDED	203
EDUCATION AND HEALTH SERVICES		95
LEISURE AND HOSPITALITY		83
TRADE, TRANSPORTATION, AND UTILITIES		51
OTHER SERVICES		18

Bureau of Labor Statistics

DID YOU KNOW?

Apalachicola is most famous for its excellent quality oysters and so it is known as the oyster capital of the world.

There are more than 900 historic homes, buildings and sites in Apalachicola's Historic District. The city is considered a "distinctive destination" by the National Trust for Historic Preservation.

Franklin County is known as the Forgotten Coast because it is the last remaining stretch of unspoiled, pristine Gulf Coast beaches that have not been developed.

COMMODITY FLOW HIGHLIGHTS



IMPORTS

WITHIN COUNTY

EXPORTS

	2018	2045	2018	2045	2018	2045
Tonnage:	54.46 K	101.24 K	1152	4901	36.88 K	58.41 K
Value:	72.97 M	285.51 M	4.18 M	57.05 M	58.61 M	111.23 M



TOP COMMODITY by Tonnage, 2018



Petroleum or Coal Products	18,824
Warehouse, Distribution Center and Drayage Movements	16,159
Nonmetallic Minerals	8,921
Clay, Concrete, Glass, Stone	4,097
Food or Kindred Products	2,745

Lumber or Wood Products	15,770
Food or Kindred Products	14,450
Waste or Scrap Materials	5,155
Marine Products	989
Farm Products	295



TOP COMMODITY by Value, 2018

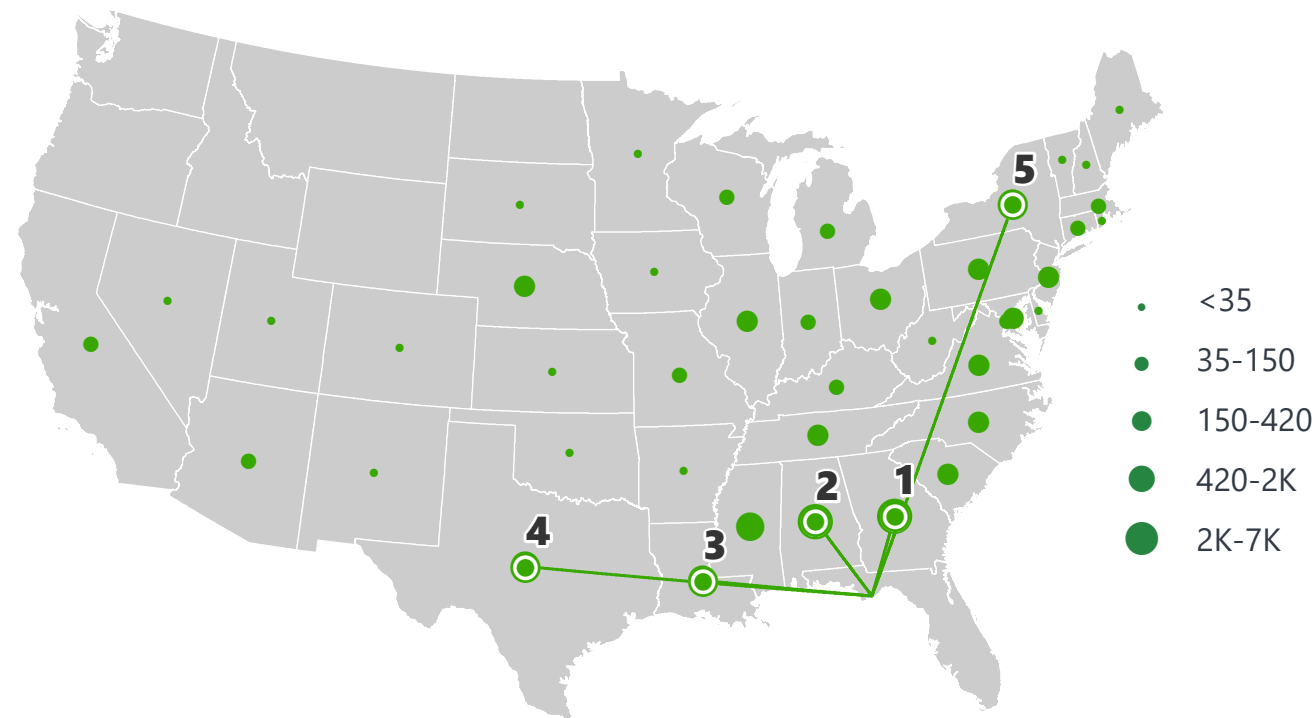


Marine Products	\$ 31,112,277
Warehouse, Distribution Center and Drayage Movements	\$ 20,365,781
Petroleum or Coal Products	\$ 10,847,912
Food or Kindred Products	\$ 4,814,706
Transportation Equipment	\$ 4,443,707

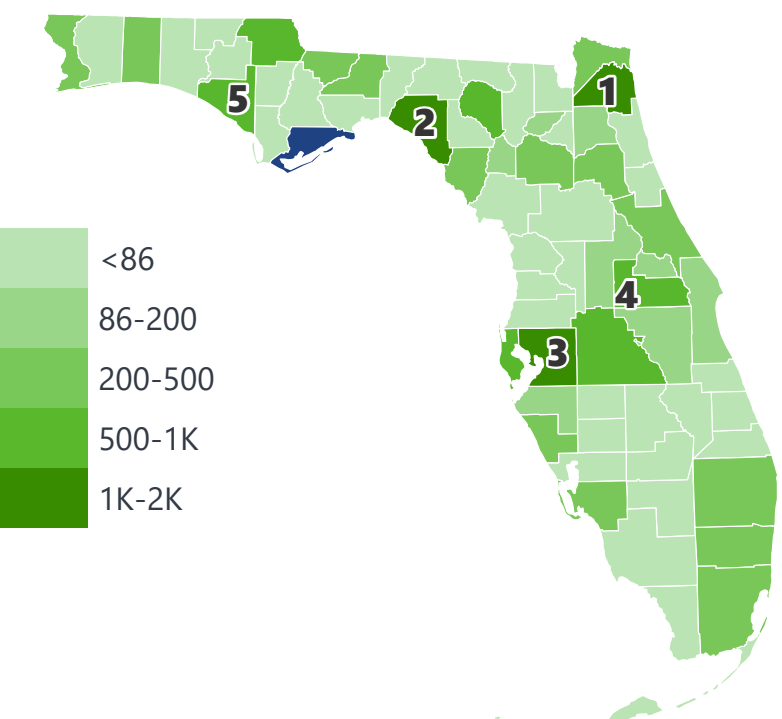
Food or Kindred Products	\$ 39,878,062
Marine Products	\$ 13,488,089
Lumber or Wood Products	\$ 2,761,086
Waste or Scrap Materials	\$ 1,261,569
Warehouse, Distribution Center and Drayage Movements	\$ 990,670

FRANKLIN COUNTY EXPORTS AND IMPORTS

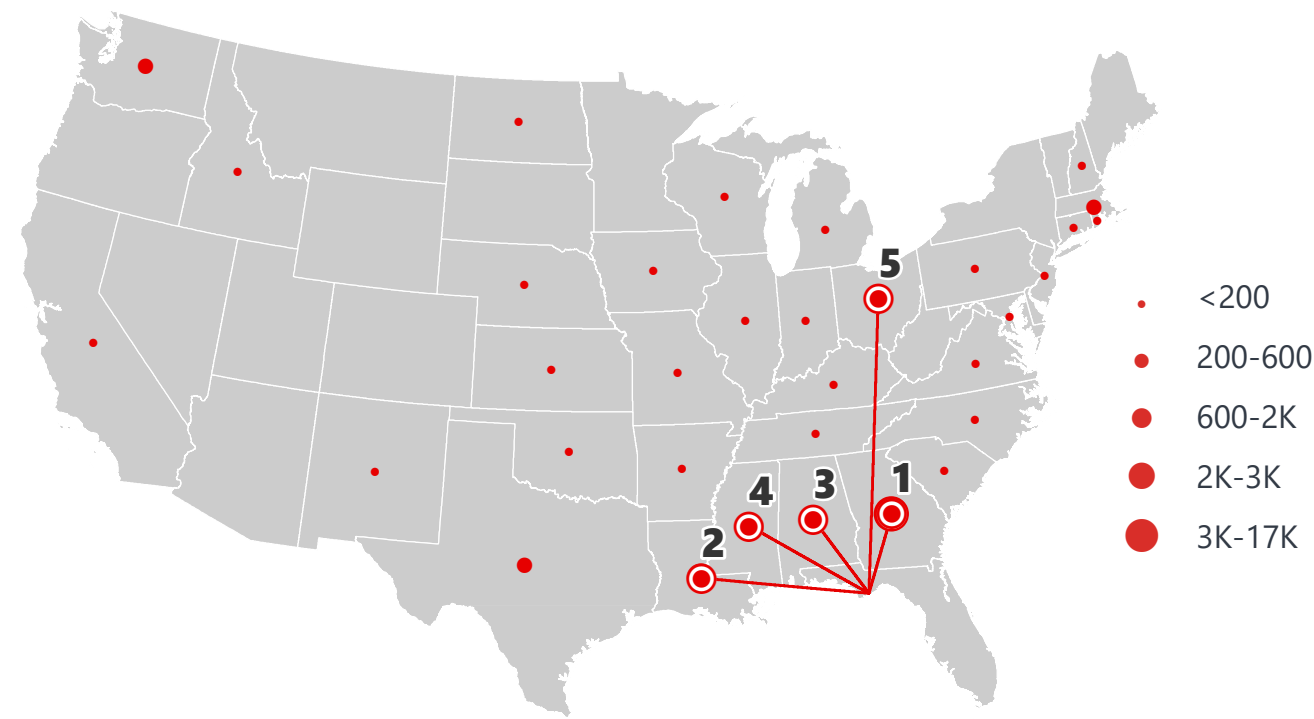
DOMESTIC EXPORTS (TONS)



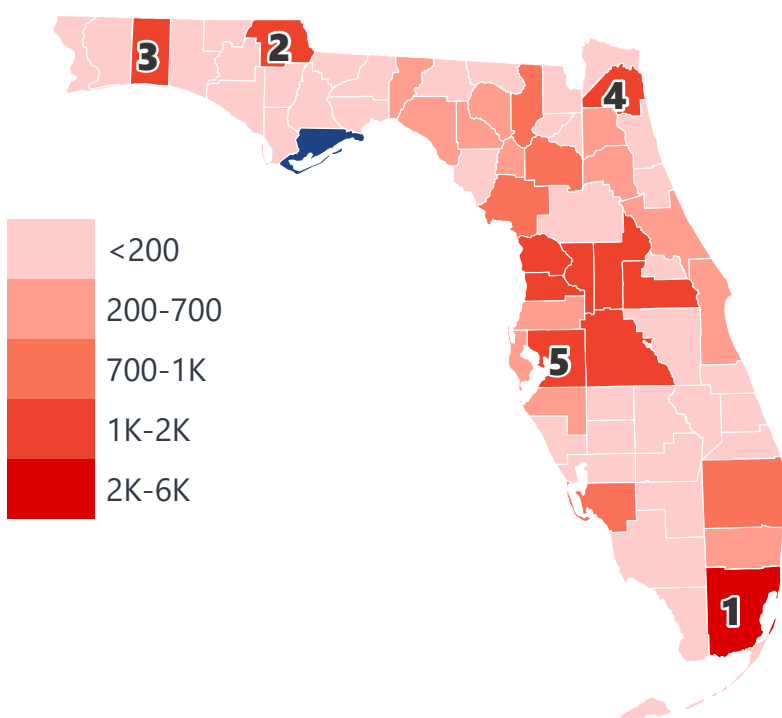
INTRASTATE EXPORTS (TONS)



DOMESTIC IMPORTS (TONS)



INTRASTATE IMPORTS (TONS)



DOMESTIC EXPORTS (TONNAGE)

1	Georgia	6,987
2	Alabama	5,936
3	Louisiana	1,561
4	Texas	887
5	New York	871

INTRASTATE EXPORTS (TONNAGE)

1	Duval	1,633
2	Taylor	1,179
3	Hillsborough	1,080
4	Orange	973
5	Bay	841

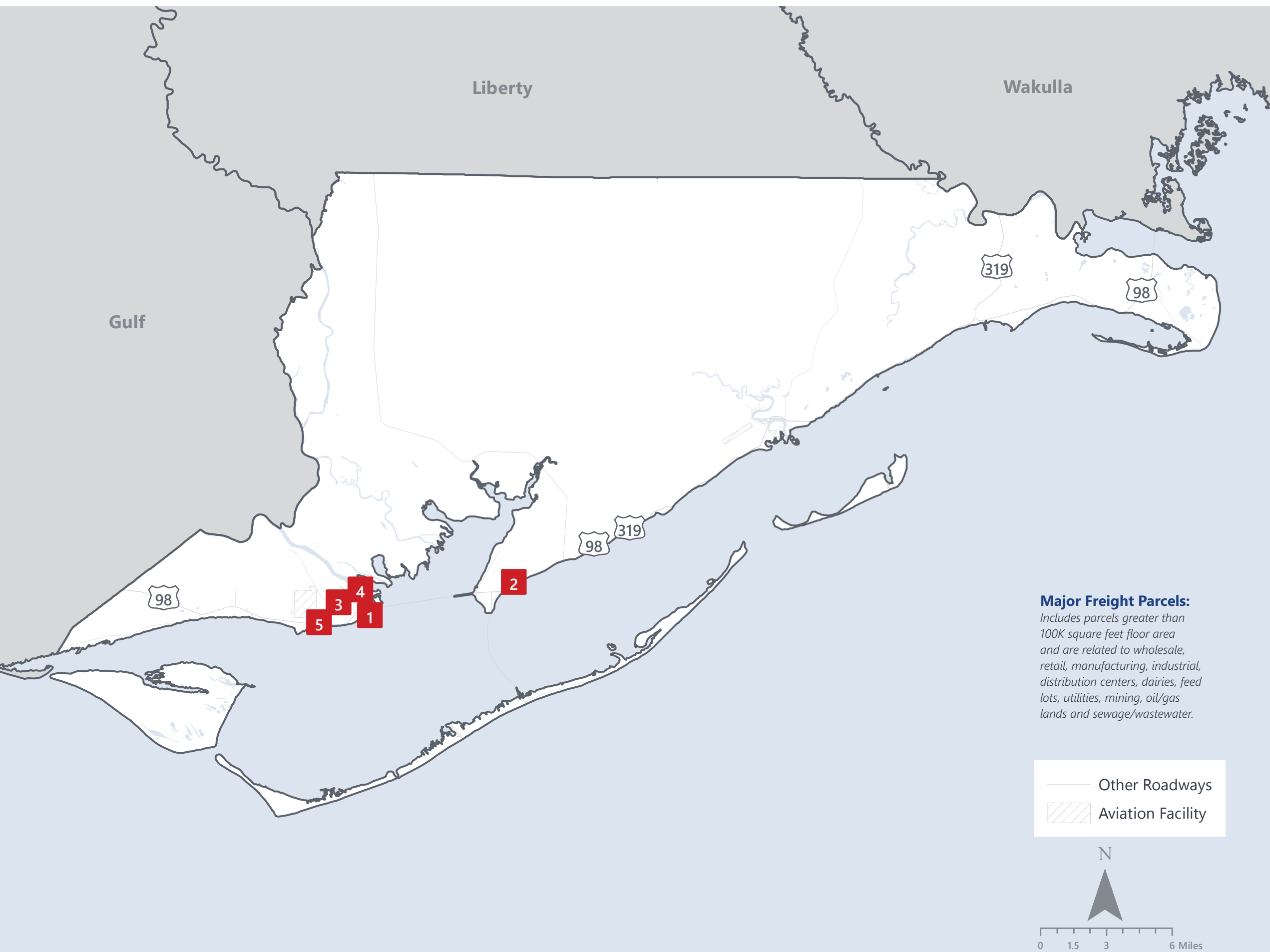
DOMESTIC IMPORTS (TONNAGE)

1	Georgia	16,749
2	Louisiana	2,779
3	Alabama	1,779
4	Mississippi	1,219
5	Ohio	565

INTRASTATE IMPORTS (TONNAGE)

1	Miami-Dade	5,879
2	Jackson	2,493
3	Okaloosa	2,284
4	Duval	1,899
5	Hillsborough	1,802

FRANKLIN COUNTY FREIGHT INFRASTRUCTURE



LARGEST FREIGHT EMPLOYERS

1	Leavins Seafood	50-100
2	Barbers Seafood	0-50
3	Water Street Seafood	0-50
4	JV Gander	0-50
5	Water Street Seafood	0-50

MAJOR FREIGHT LAND USES

0.6 M SQ.FT Floor Area

44.63%	Warehousing and distribution centers
33.17%	Other food processing
12.06%	Airports, bus terminals and marine terminals
6.90%	Light manufacturing
1.60%	Wholesale outlets, produce houses, manufacturing outlets

21.2 M SQ.FT LAND AREA

45.74%	Sewage disposal and waste land
20.81%	Warehousing and distribution centers
12.89%	Utilities
11.69%	Airports, bus terminals and marine terminals
3.68%	Other food processing

MAJOR COUNTY COMMODITIES



IMPORTS



TOP COMMODITY by Tonnage, 2018 (relative to Florida)

FL Rank	Commodity	% Florida Share
23	Marine Products	1.01%
62	Warehouse, Distribution Center and Drayage Movements	0.04%
65	Petroleum or Coal Products	0.03%
60	Food or Kindred Products	0.01%
66	Clay, Concrete, Glass, Stone	0.01%

EXPORTS



FL Rank	Commodity	% Florida Share
20	Marine Products	0.67%
56	Lumber or Wood Products	0.17%
35	Food or Kindred Products	0.09%
64	Waste or Scrap Materials	0.02%
67	Farm Products	0.00%

TOP COMMODITY by Value, 2018 (relative to Florida)

FL Rank	Commodity	% Florida Share
22	Marine Products	1.09%
62	Warehouse, Distribution Center and Drayage Movements	0.03%
65	Petroleum or Coal Products	0.03%
53	Food or Kindred Products	0.01%
66	Clay, Concrete, Glass, Stone	0.01%

FL Rank	Commodity	% Florida Share
17	Marine Products	0.84%
27	Food or Kindred Products	0.26%
59	Lumber or Wood Products	0.06%
64	Waste or Scrap Materials	0.02%
45	Machinery	0.00%



TRANSPORTATION STATISTICS AND FREIGHT MOVEMENT BY MODE



31 K | Daily Truck Miles Traveled
- Planning Time Index
401 | Public Roadway Mileage



90 Miles | Distance from closest seaport
(Port of Panama City)



- Class I Mainline Miles
- Class II Mainline Miles
28.94 | Class III Mainline Miles (AN)



70 Miles | Distance from closest airport
(Tallahassee International Airport)

FLORIDA HIGHLIGHTS

3rd most populous US State

\$1T Gross Domestic Product

4th Largest US Economy and **17th Largest** Economy in World

Nation's **3rd largest** workforce

1 in 5 U.S. exporters are located in Florida

\$153B International Trade

1.76M jobs supported by Trade, Transportation and Utilities industry sector

1.25M jobs supported by Leisure and Hospitality industry sector

131M annual visitors

CAPITAL **TALLAHASSEE**

AREA
(SQ. MILES) **53,624**

LARGEST
CITY (SIZE) **JACKSONVILLE**

POPULATION
(2019) **21,208,589**

ANNUAL POP
GROWTH RATE
(2010-2019) **1.4%**

EMPLOYMENT
(2019) **8,884,065**

ANNUAL EMP
GROWTH RATE
(2010-2019) **2.8%**

*Bureau of Economic Business Research,
Bureau of Labor Statistics*

DOMESTIC IMPORTS

1	GEORGIA	\$44B
2	CALIFORNIA	\$29B
3	TEXAS	\$26B
4	ALABAMA	\$18B
5	ILLINOIS	\$18B

DOMESTIC EXPORTS

1	GEORGIA	\$22B
2	TEXAS	\$19B
3	CALIFORNIA	\$15B
4	NORTH CAROLINA	\$12B
5	NEW YORK	\$10B

INTERNATIONAL IMPORTS

1	CHINA	\$9.5B
2	JAPAN	\$6.5B
3	BRAZIL	\$6.4B
4	MEXICO	\$4.5B
5	CHILE	\$3.7B

INTERNATIONAL EXPORTS

1	BRAZIL	\$13.4B
2	COLOMBIA	\$4.2B
3	ARGENTINA	\$3.6B
4	DOMINICAN REPUBLIC	\$3.1B
5	CHILE	\$3B

TRANSPORTATION STATISTICS AND FREIGHT MOVEMENT BY MODE



83%
TONNAGE

71%
VALUE

123,104 Public roadway mileage
12,130 State Highway System (SHS) mileage
30.7M Daily truck miles traveled on SHS
98 Public truck parking facilities



3.5%
TONNAGE

2.9%
VALUE

15 Deepwater seaports
4.1M Twenty-foot equivalent units (TEUs)
16.8M Annual cruise passengers



6.7%
TONNAGE

1.8%
VALUE

2,936 Miles of roads
6.9M Annual rail passenger traffic



0.1%
TONNAGE

5.4%
VALUE

129 Public use airports
20 Commercial service airports
2 Active spaceports



3.6%
TONNAGE

1%
VALUE

5,899 Miles of gas transmission and hazardous liquid pipelines



3.1%
TONNAGE

17.9%
VALUE

Includes shipments by multiple modes and by parcel delivery services, U.S. Postal Service, or couriers (capped at 150 pounds). This category is not limited to containerized or trailer-on-flatcar shipments.

FLORIDA COMMODITY FLOWS (2018-2045)



IMPORTS



WITHIN FL



EXPORTS

	2018	2045	2018	2045	2018	2045
TONNAGE	142M	190M	656M	761M	57M	103M
VALUE	\$321B	\$690B	\$402B	\$844B	\$180B	\$606B

Freight Analysis Framework (FAF) 4.5.1.



Rickey Fitzgerald
Manager, Freight & Multimodal Operations
 Florida Department of Transportation
 605 Suwannee Street, Tallahassee, FL 32399
 Rickey.Fitzgerald@dot.state.fl.us
 850.414.4702