

FREIGHT AND LOGISTICS OVERVIEW

FEBRUARY 2021

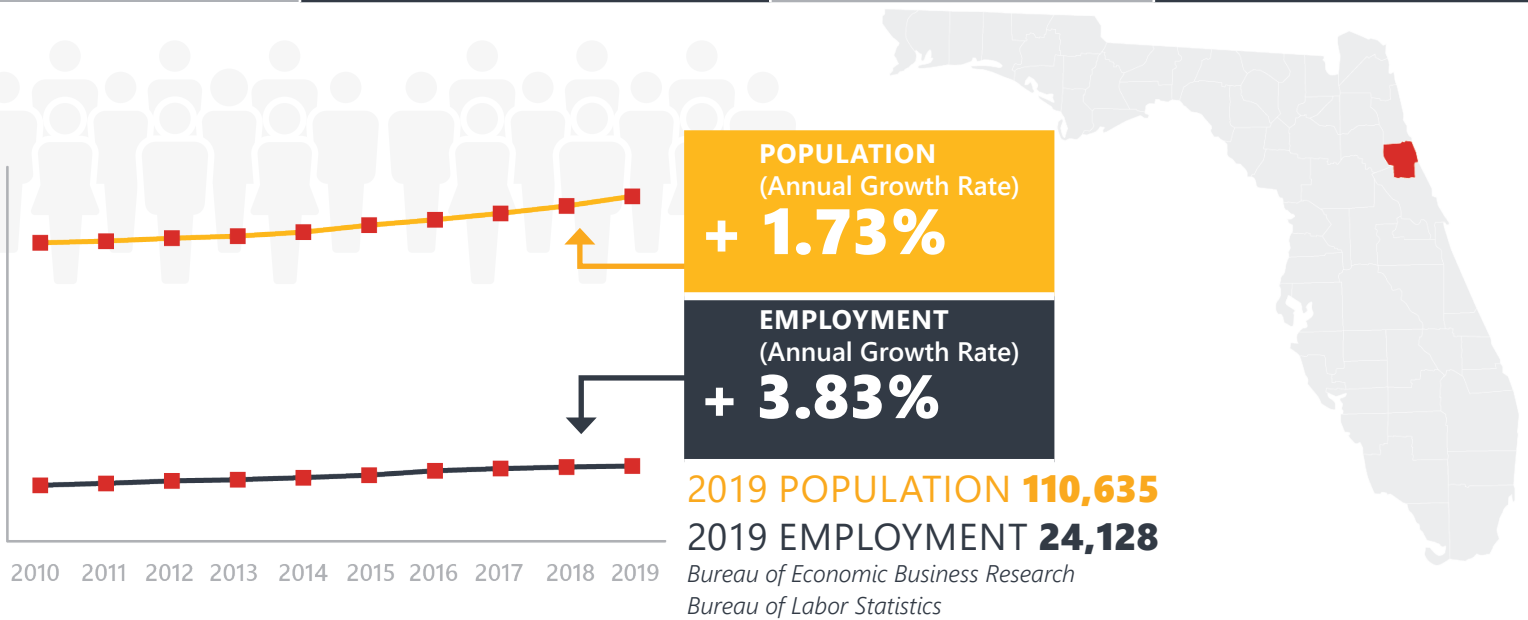
FLAGLER COUNTY



Mission: The department will provide a safe transportation system that ensures the mobility of people and goods, enhances economic prosperity, and preserves the quality of our environment and communities.

FLAGLER COUNTY HIGHLIGHTS

"THE POTATO BOWL"		AREA (SQ . MILES)	571
COUNTY SEAT	BUNNELL	LARGEST CITY (SIZE)	PALM COAST



LARGEST INDUSTRY SECTORS BY EMPLOYMENT (2019)

Office of Economic and Demographic Research



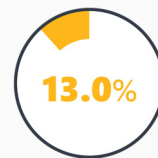
Leisure & hospitality



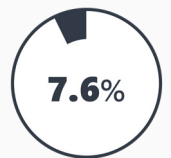
Trade, transportation & utilities



Professional & business services



Education & health services



Construction

FASTEST GROWING INDUSTRIES (2010-2019)

LEISURE AND HOSPITALITY	JOBS ADDED	2,011
PROFESSIONAL AND BUSINESS SERVICES		1,356
TRADE, TRANSPORTATION, AND UTILITIES		976
CONSTRUCTION		963
EDUCATION AND HEALTH SERVICES		785

Bureau of Labor Statistics

DID YOU KNOW?

One of the county's largest employers is Sea Ray. They ship more than 2000 boats annually.

The City of Palm Coast is among the fastest growing locations in the United States.

Palm Coast has been hailed as the most productive ecosystem on the planet.

COMMODITY FLOW HIGHLIGHTS



IMPORTS

WITHIN COUNTY

EXPORTS

2018

2045

2018

2045

2018

2045

Tonnage:	780.51 K	1.05 M	4.65 K	3.67 K	0.32 M	0.46 M
Value:	\$ 697.43 M	\$ 0.88 B	\$ 1.66 M	\$ 1.32 M	\$ 0.31 B	\$ 0.38 B



TOP COMMODITY by Tonnage, 2018



Petroleum or Coal Products	184,880
Warehouse, Distribution Center and Drayage Movements	157,891
Clay, Concrete, Glass, Stone	147,096
Nonmetallic Minerals	138,785
Food or Kindred Products	49,217

Farm Products	131,634
Waste or Scrap Materials	96,284
Clay, Concrete, Glass, Stone	34,493
Lumber or Wood Products	29,203
Warehouse, Distribution Center and Drayage Movements	19,481



TOP COMMODITY by Value, 2018

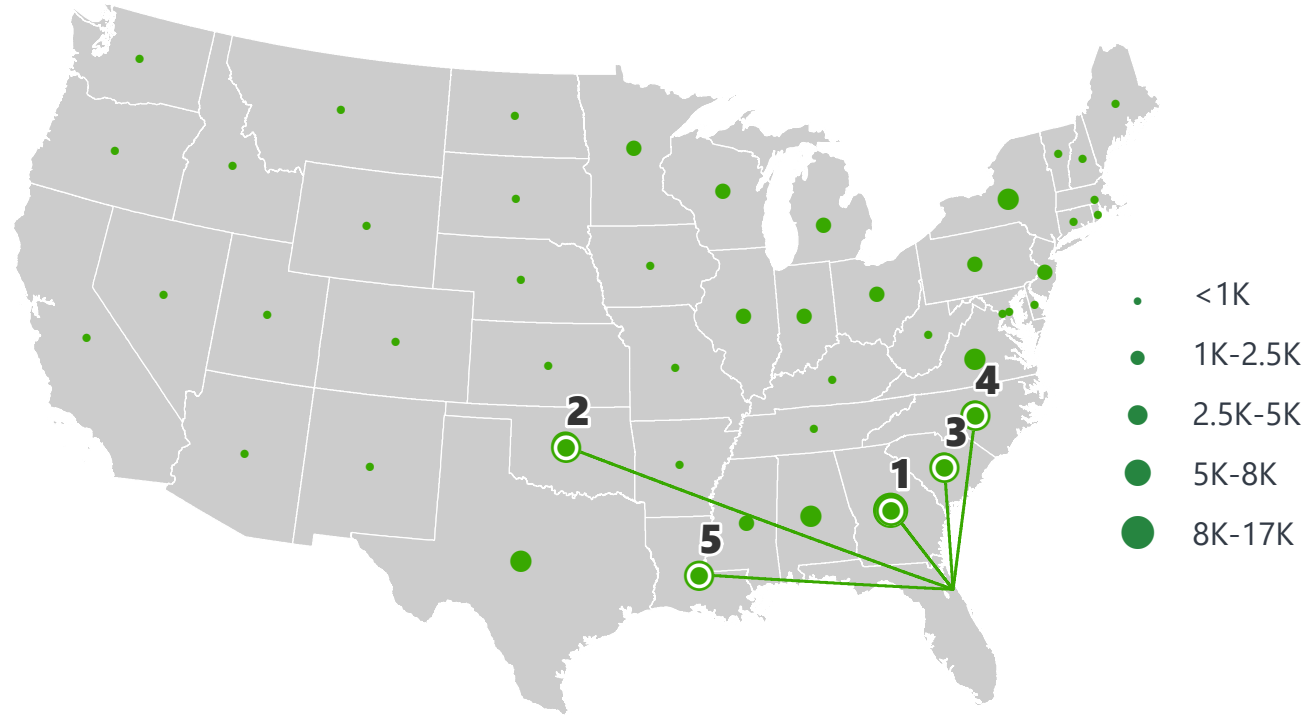


Warehouse, Distribution Center and Drayage Movements	\$ 193,641,245
Transportation Equipment	\$ 123,515,273
Petroleum or Coal Products	\$ 101,807,045
Food or Kindred Products	\$ 59,793,113
Chemicals or Allied Products	\$ 44,309,864

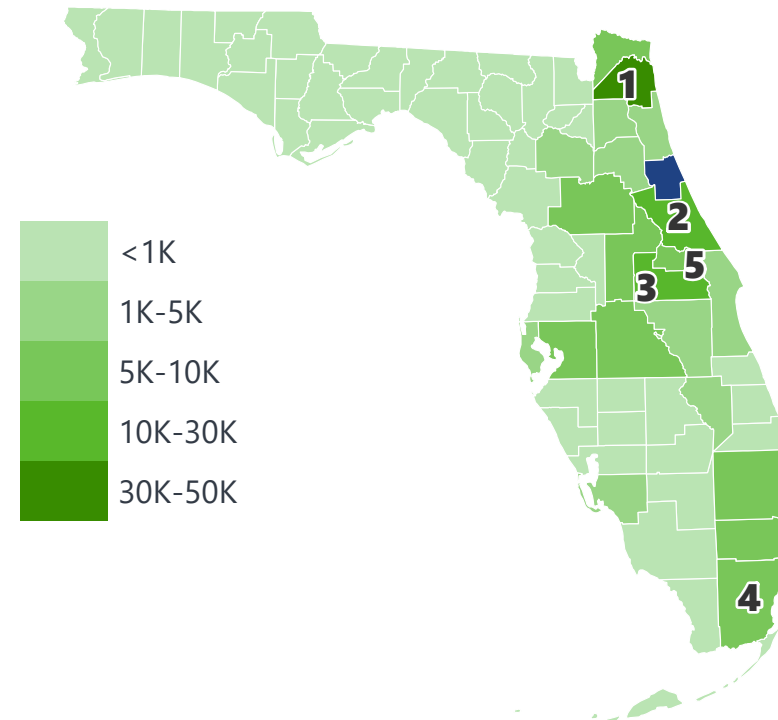
Farm Products	\$ 141,971,202
Transportation Equipment	\$ 93,696,947
Warehouse, Distribution Center and Drayage Movements	\$ 24,476,246
Waste or Scrap Materials	\$ 24,026,402
Lumber or Wood Products	\$ 11,868,060

FLAGLER COUNTY EXPORTS AND IMPORTS

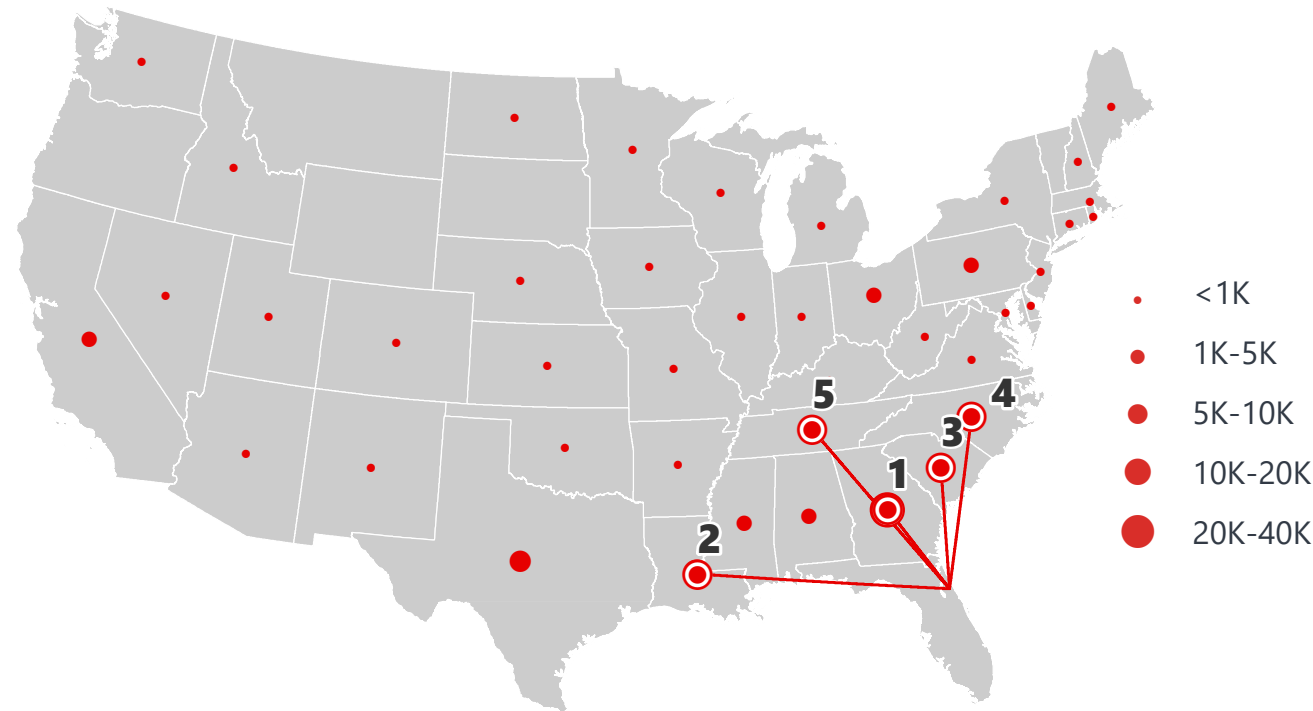
DOMESTIC EXPORTS (TONS)



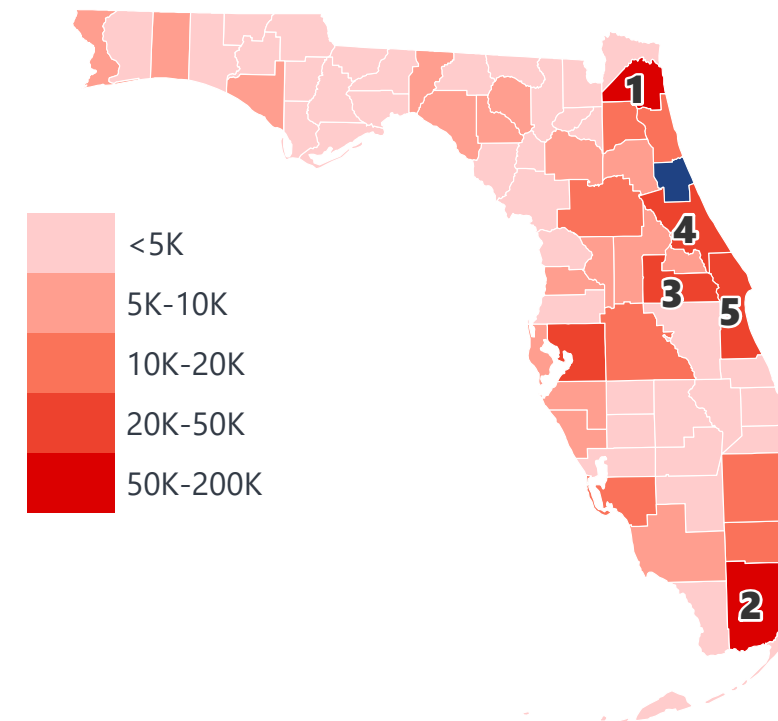
INTRASTATE EXPORTS (TONS)



DOMESTIC IMPORTS (TONS)



INTRASTATE IMPORTS (TONS)



DOMESTIC EXPORTS (TONNAGE)

1	Georgia	16,665
2	Oklahoma	8,063
3	South Carolina	6,808
4	North Carolina	5,626
5	Louisiana	4,494

INTRASTATE EXPORTS (TONNAGE)

1	Duval	49,830
2	Volusia	30,180
3	Orange	20,401
4	Miami-Dade	11,950
5	Seminole	9,560

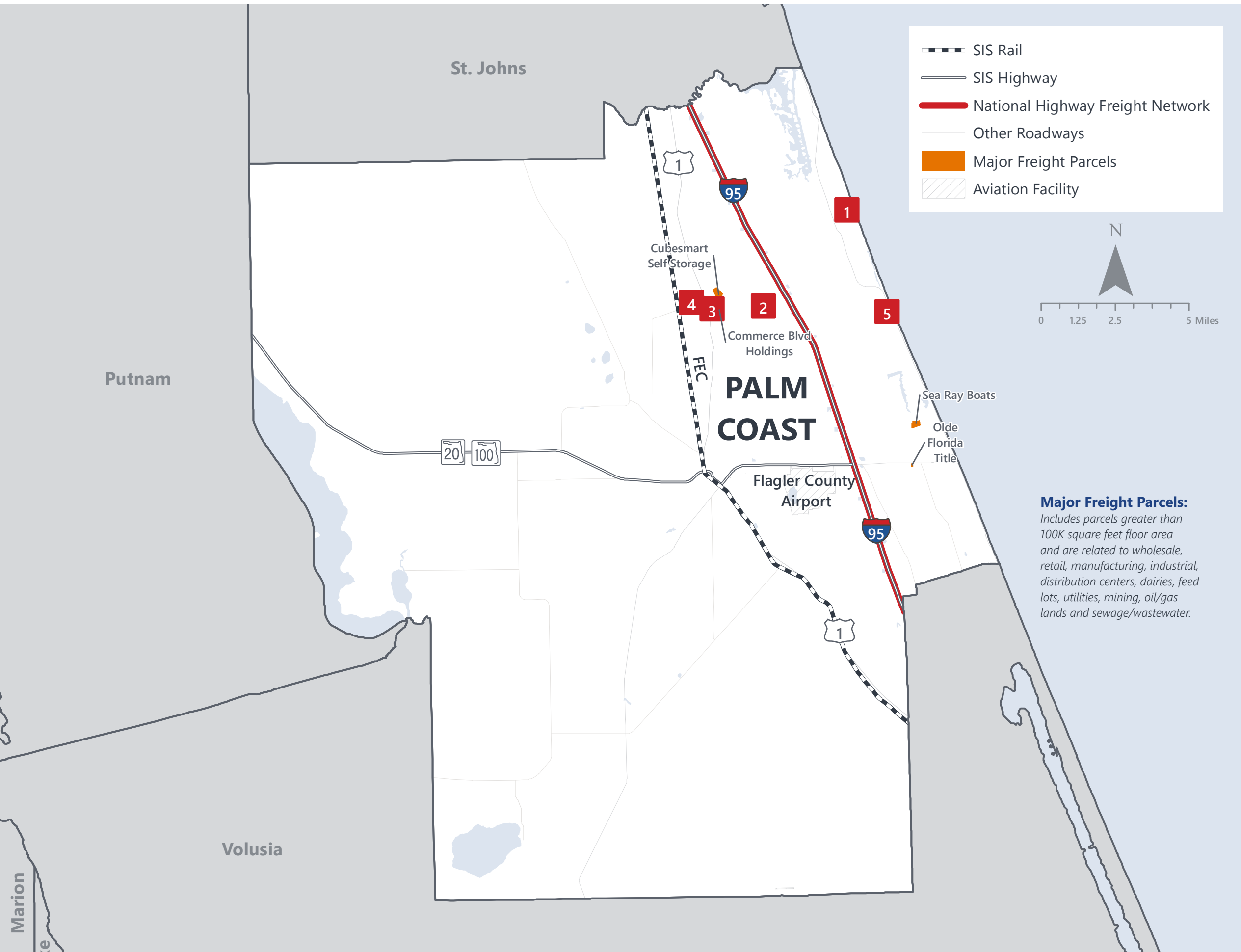
DOMESTIC IMPORTS (TONNAGE)

1	Georgia	37,191
2	Louisiana	19,516
3	South Carolina	9,976
4	North Carolina	7,150
5	Tennessee	6,669

INTRASTATE IMPORTS (TONNAGE)

1	Duval	181,383
2	Miami-Dade	137,311
3	Orange	49,946
4	Volusia	28,006
5	Brevard	25,795

FLAGLER COUNTY FREIGHT INFRASTRUCTURE



LARGEST FREIGHT EMPLOYERS

1	Sea Ray Boats	400-500
2	USPS	100-200
3	The Kanthal Corp.	50-100
4	American Radionic Company	50-100
5	Designs for Health	50-100

MAJOR FREIGHT LAND USES

3.5 M SQ.FT Floor Area

50.31%	Light manufacturing
32.88%	Warehousing and distribution centers
6.57%	Heavy industrial
2.67%	Minerals processing and construction material plants
2.29%	Lumber yards, sawmills, planing mills

193.4 M SQ.FT LAND AREA

54.60%	Sewage disposal and waste land
27.07%	Utilities
6.26%	Warehousing and distribution centers
4.39%	Light manufacturing
2.08%	Minerals processing and construction material plants

Florida Department of Economic Opportunity, 2018
Florida Department of Revenue, 2019

MAJOR COUNTY COMMODITIES



IMPORTS



TOP COMMODITY by Tonnage, 2018 (relative to Florida)

FL Rank	Commodity	% Florida Share
20	Tobacco Products	0.95%
28	Leather or Leather Products	0.48%
37	Warehouse, Distribution Center and Drayage Movements	0.37%
30	Misc. Manufacturing Products	0.36%
42	Clay, Concrete, Glass, Stone	0.35%

EXPORTS



FL Rank	Commodity	% Florida Share
25	Farm Products	0.95%
37	Waste or Scrap Materials	0.36%
52	Lumber or Wood Products	0.31%
20	Transportation Equipment	0.17%
25	Instruments, Photo and Optical Equipment	0.12%

TOP COMMODITY by Value, 2018 (relative to Florida)

FL Rank	Commodity	% Florida Share
20	Tobacco Products	0.96%
27	Leather or Leather Products	0.58%
42	Clay, Concrete, Glass, Stone	0.28%
37	Warehouse, Distribution Center and Drayage Movements	0.25%
38	Marine Products	0.25%

FL Rank	Commodity	% Florida Share
17	Farm Products	1.59%
40	Waste or Scrap Materials	0.36%
51	Lumber or Wood Products	0.24%
17	Transportation Equipment	0.22%
47	Clay, Concrete, Glass, Stone	0.04%



TRANSPORTATION STATISTICS AND FREIGHT MOVEMENT BY MODE



92.48%
TONNAGE
97.46%
VALUE

185 K | Daily Truck Miles Traveled
1.16 | Planning Time Index
990 | Public Roadway Mileage



0.00%
TONNAGE
0.00%
VALUE

70 Miles | Distance from closest seaport (JAXPORT)



7.52%
TONNAGE
2.50%
VALUE

- | Class I Mainline Miles
23.47 | Class II Mainline Miles (FEC)
- | Class III Mainline Miles



0.00%
TONNAGE
0.00%
VALUE

27 Miles | Distance from closest major airport (Daytona Beach International Airport)

FLORIDA HIGHLIGHTS

3rd most populous US State
\$1T Gross Domestic Product
4th Largest US Economy and 17th Largest Economy in World
Nation's 3rd largest workforce
1 in 5 U.S. exporters are located in Florida
\$153B International Trade
1.76M jobs supported by Trade, Transportation and Utilities industry sector
1.25M jobs supported by Leisure and Hospitality industry sector
131M annual visitors

CAPITAL	TALLAHASSEE
AREA (SQ . MILES)	53,624
LARGEST CITY (SIZE)	JACKSONVILLE
POPULATION (2019)	21,208,589
ANNUAL POP GROWTH RATE (2010-2019)	1.4%
EMPLOYMENT (2019)	8,884,065
ANNUAL EMP GROWTH RATE (2010-2019)	2.8%

Bureau of Economic Business Research, Bureau of Labor Statistics

DOMESTIC IMPORTS

1	GEORGIA	\$44B
2	CALIFORNIA	\$29B
3	TEXAS	\$26B
4	ALABAMA	\$18B
5	ILLINOIS	\$18B

DOMESTIC EXPORTS

1	GEORGIA	\$22B
2	TEXAS	\$19B
3	CALIFORNIA	\$15B
4	NORTH CAROLINA	\$12B
5	NEW YORK	\$10B

INTERNATIONAL IMPORTS

1	CHINA	\$9.5B
2	JAPAN	\$6.5B
3	BRAZIL	\$6.4B
4	MEXICO	\$4.5B
5	CHILE	\$3.7B

INTERNATIONAL EXPORTS

1	BRAZIL	\$13.4B
2	COLOMBIA	\$4.2B
3	ARGENTINA	\$3.6B
4	DOMINICAN REPUBLIC	\$3.1B
5	CHILE	\$3B



TRANSPORTATION STATISTICS AND FREIGHT MOVEMENT BY MODE



83%
TONNAGE

71%
VALUE

123,104 Public roadway mileage
12,130 State Highway System (SHS) mileage
30.7M Daily truck miles traveled on SHS
98 Public truck parking facilities



3.5%
TONNAGE

2.9%
VALUE

15 Deepwater seaports
4.1M Twenty-foot equivalent units (TEUs)
16.8M Annual cruise passengers



6.7%
TONNAGE

1.8%
VALUE

2,936 Miles of roads
6.9M Annual rail passenger traffic



0.1%
TONNAGE

5.4%
VALUE

129 Public use airports
20 Commercial service airports
2 Active spaceports



3.6%
TONNAGE

1%
VALUE

5,899 Miles of gas transmission and hazardous liquid pipelines



3.1%
TONNAGE

17.9%
VALUE

Includes shipments by multiple modes and by parcel delivery services, U.S. Postal Service, or couriers (capped at 150 pounds). This category is not limited to containerized or trailer-on-flatcar shipments.

FLORIDA COMMODITY FLOWS (2018-2045)



IMPORTS



WITHIN FL



EXPORTS

	2018	2045	2018	2045	2018	2045
TONNAGE	142M	190M	656M	761M	57M	103M
VALUE	\$321B	\$690B	\$402B	\$844B	\$180B	\$606B

Freight Analysis Framework (FAF) 4.5.1.



Rickey Fitzgerald
 Manager, Freight & Multimodal Operations
 Florida Department of Transportation
 605 Suwannee Street, Tallahassee, FL 32399
 Rickey.Fitzgerald@dot.state.fl.us
 850.414.4702