

FREIGHT AND LOGISTICS OVERVIEW

FEBRUARY 2021

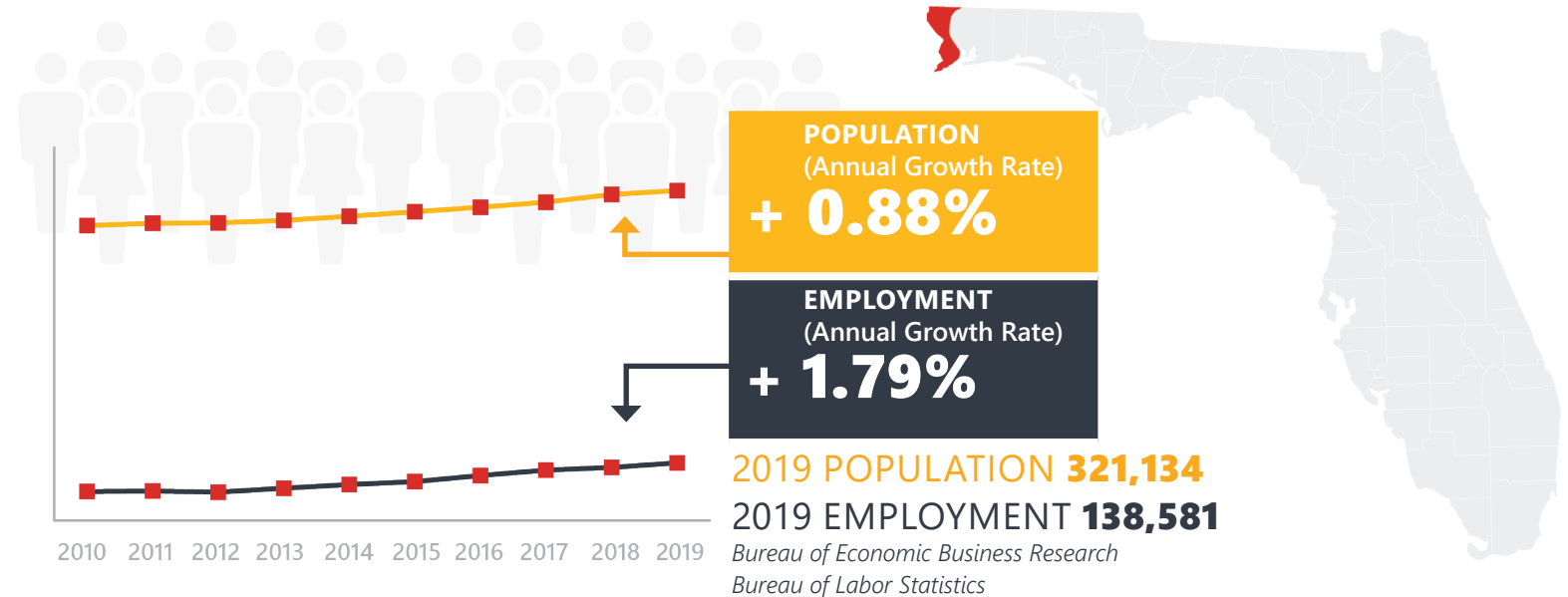
ESCAMBIA COUNTY



Mission: The department will provide a safe transportation system that ensures the mobility of people and goods, enhances economic prosperity, and preserves the quality of our environment and communities.

ESCAMBIA COUNTY HIGHLIGHTS

"WESTERN GATE TO THE SUNSHINE STATE"		AREA (SQ . MILES)	875
COUNTY SEAT	PENSACOLA	LARGEST CITY (SIZE)	PENSACOLA

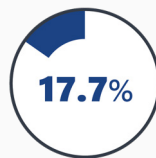


LARGEST INDUSTRY SECTORS BY EMPLOYMENT (2019)

Office of Economic and Demographic Research



Education & health services



Trade, transportation & utilities



Leisure & hospitality



Professional & business services



Financial activities

FASTEST GROWING INDUSTRIES (2010-2019)

LEISURE AND HOSPITALITY	JOBS ADDED	5,627
FINANCIAL ACTIVITIES		5,354
PROFESSIONAL AND BUSINESS SERVICES		3,271
TRADE, TRANSPORTATION, AND UTILITIES		2,175
EDUCATION AND HEALTH SERVICES		1,607

Bureau of Labor Statistics

DID YOU KNOW?

Escambia County is the westernmost and oldest county in Florida.

The county is linked to 22 other states along 21,000 route miles of railroad operated by CSX.

Almost 45,000 military veterans make this region their home.

COMMODITY FLOW HIGHLIGHTS



IMPORTS

WITHIN COUNTY

EXPORTS

	2018	2045	2018	2045	2018	2045
Tonnage:	7.38 M	7.17 M	102.73 K	93.63 K	4.24 M	5.56 M
Value:	\$ 5.83 B	\$ 7.92 B	\$ 0.18 B	\$ 0.14 B	\$ 5.61 B	\$ 8.46 B



TOP COMMODITY by Tonnage, 2018



Nonmetallic Minerals	1,866,365
Coal	1,371,495
Petroleum or Coal Products	1,073,858
Chemicals or Allied Products	810,857
Clay, Concrete, Glass, Stone	544,180

Clay, Concrete, Glass, Stone	834,110
Chemicals or Allied Products	797,282
Warehouse, Distribution Center and Drayage Movements	793,652
Pulp, Paper or Allied Products	748,667
Waste or Scrap Materials	374,413



TOP COMMODITY by Value, 2018

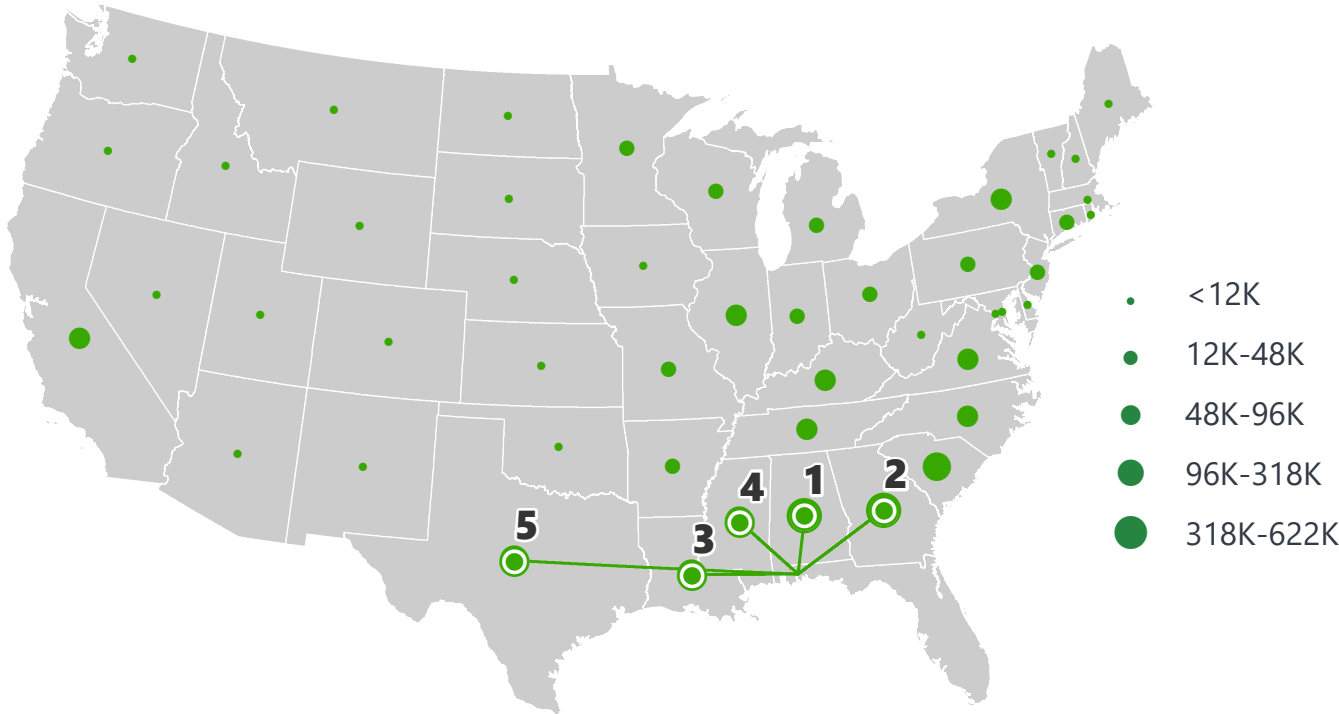


Chemicals or Allied Products	\$ 958,624,488
Transportation Equipment	\$ 695,877,394
Warehouse, Distribution Center and Drayage Movements	\$ 680,369,974
Petroleum or Coal Products	\$ 614,270,777
Food or Kindred Products	\$ 501,694,458

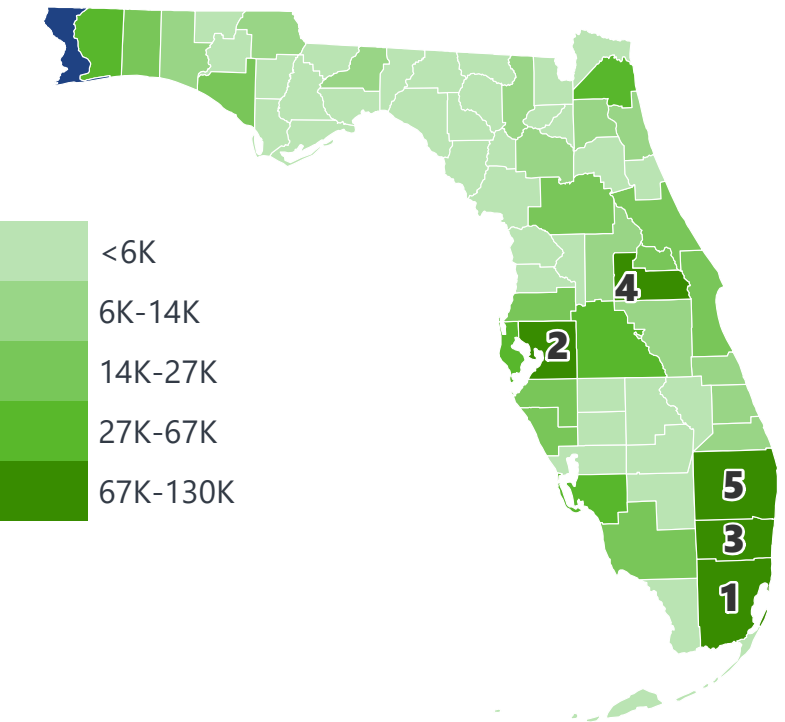
Chemicals or Allied Products	\$ 1,704,632,892
Machinery	\$ 1,045,665,414
Warehouse, Distribution Center and Drayage Movements	\$ 1,033,700,860
Pulp, Paper or Allied Products	\$ 587,275,889
Instruments, Photo and Optical Equipment	\$ 184,728,401

ESCAMBIA COUNTY EXPORTS AND IMPORTS

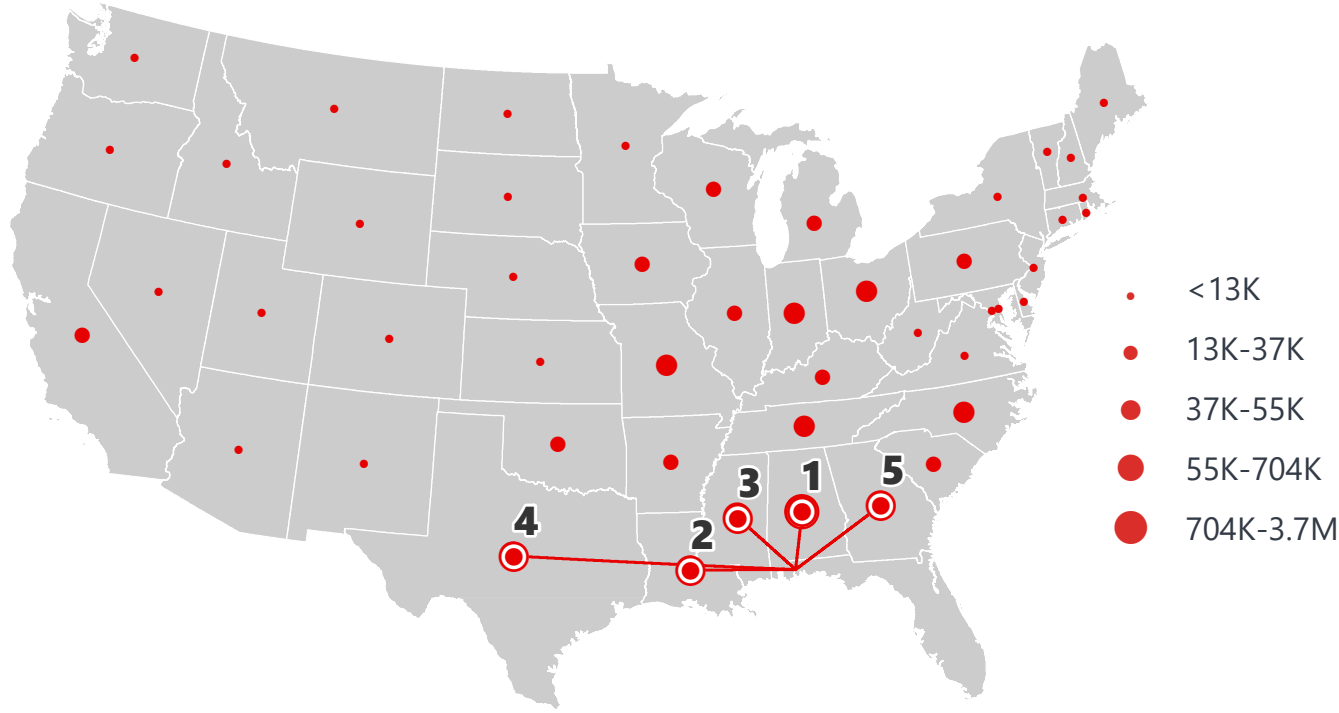
DOMESTIC EXPORTS (TONS)



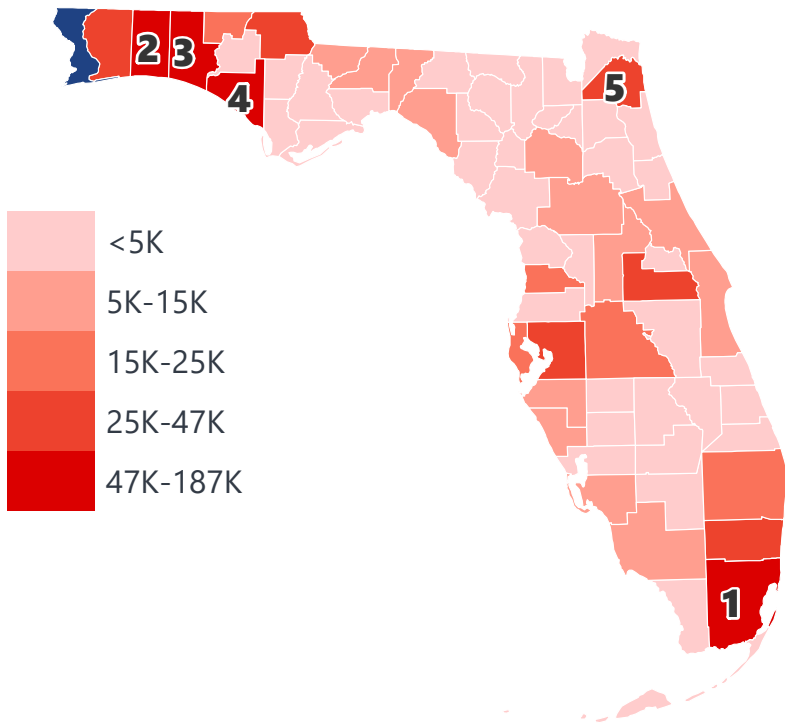
INTRASTATE EXPORTS (TONS)



DOMESTIC IMPORTS (TONS)



INTRASTATE IMPORTS (TONS)



DOMESTIC EXPORTS (TONNAGE)

1	Alabama	621,524
2	Georgia	469,744
3	Louisiana	317,268
4	Mississippi	228,401
5	Texas	173,176

INTRASTATE EXPORTS (TONNAGE)

1	Miami-Dade	129,966
2	Hillsborough	111,057
3	Broward	101,159
4	Orange	100,920
5	Palm Beach	100,342

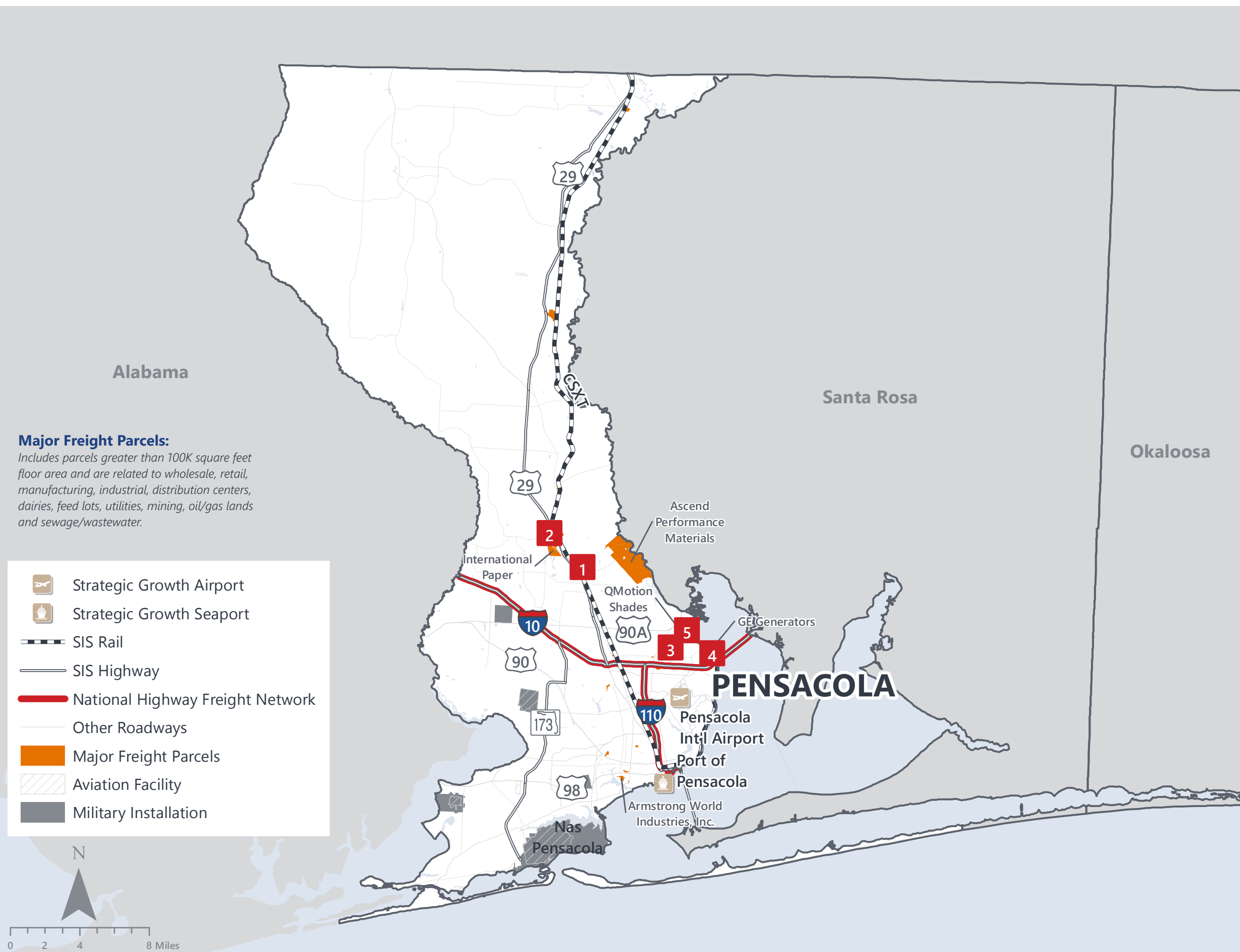
DOMESTIC IMPORTS (TONNAGE)

1	Alabama	3,656,679
2	Louisiana	703,382
3	Mississippi	529,985
4	Texas	428,109
5	Georgia	312,198

INTRASTATE IMPORTS (TONNAGE)

1	Miami-Dade	186,215
2	Okaloosa	150,616
3	Walton	115,441
4	Bay	109,658
5	Duval	46,432

ESCAMBIA COUNTY FREIGHT INFRASTRUCTURE



LARGEST FREIGHT EMPLOYERS

1	SK Capital Partners	800-900
2	International Paper Company	400-500
3	Pall Corporation	300-400
4	GE	200-300
5	Wayne-Dalton	200-300

MAJOR FREIGHT LAND USES

25.3 M SQ.FT Floor Area

38.28%	Warehousing and distribution centers
25.25%	Heavy industrial
14.16%	Wholesale outlets, produce houses, manufacturing outlets
9.73%	Light manufacturing
5.04%	Airports, bus terminals and marine terminals

570.1 M SQ.FT LAND AREA

28.95%	Sewage disposal and waste land
20.92%	Heavy industrial
12.96%	Utilities
12.30%	Airports, bus terminals and marine terminals
7.67%	Warehousing and distribution centers

MAJOR COUNTY COMMODITIES



IMPORTS



TOP COMMODITY by Tonnage, 2018 (relative to Florida)

FL Rank	Commodity	% Florida Share
2	Ordnance or Accessories	13.72%
4	Coal	13.53%
4	Forest Products	6.42%
7	Chemicals or Allied Products	5.20%
11	Lumber or Wood Products	2.63%

EXPORTS



FL Rank	Commodity	% Florida Share
1	Machinery	14.92%
4	Pulp, Paper or Allied Products	13.38%
4	Textile Mill Products	9.64%
3	Chemicals or Allied Products	5.87%
12	Fabricated Metal Products	2.64%

TOP COMMODITY by Value, 2018 (relative to Florida)

FL Rank	Commodity	% Florida Share
2	Ordnance or Accessories	14.86%
4	Coal	13.52%
4	Forest Products	6.03%
9	Chemicals or Allied Products	3.30%
10	Lumber or Wood Products	2.24%

FL Rank	Commodity	% Florida Share
2	Pulp, Paper or Allied Products	10.49%
5	Chemicals or Allied Products	10.25%
3	Machinery	9.89%
8	Textile Mill Products	5.73%
12	Fabricated Metal Products	2.39%



TRANSPORTATION STATISTICS AND FREIGHT MOVEMENT BY MODE



373 K | Daily Truck Miles Traveled
1.32 | Planning Time Index
2,223 | Public Roadway Mileage



1 Major Seaport | Port of Pensacola



52.67 | Class I Mainline Miles (CSX)
- | Class II Mainline Miles
44.63 | Class III Mainline Miles (AGR)



1 Major Airport | Pensacola International Airport

FLORIDA HIGHLIGHTS

3rd most populous US State

\$1T Gross Domestic Product

4th Largest US Economy and **17th Largest** Economy in World

Nation's **3rd largest** workforce

1 in 5 U.S. exporters are located in Florida

\$153B International Trade

1.76M jobs supported by Trade, Transportation and Utilities industry sector

1.25M jobs supported by Leisure and Hospitality industry sector

131M annual visitors

CAPITAL **TALLAHASSEE**

AREA (SQ. MILES) **53,624**

LARGEST CITY (SIZE) **JACKSONVILLE**

POPULATION (2019) **21,208,589**

ANNUAL POP GROWTH RATE (2010-2019) **1.4%**

EMPLOYMENT (2019) **8,884,065**

ANNUAL EMP GROWTH RATE (2010-2019) **2.8%**

*Bureau of Economic Business Research,
Bureau of Labor Statistics*

DOMESTIC IMPORTS

1	GEORGIA	\$44B
2	CALIFORNIA	\$29B
3	TEXAS	\$26B
4	ALABAMA	\$18B
5	ILLINOIS	\$18B

DOMESTIC EXPORTS

1	GEORGIA	\$22B
2	TEXAS	\$19B
3	CALIFORNIA	\$15B
4	NORTH CAROLINA	\$12B
5	NEW YORK	\$10B

INTERNATIONAL IMPORTS

1	CHINA	\$9.5B
2	JAPAN	\$6.5B
3	BRAZIL	\$6.4B
4	MEXICO	\$4.5B
5	CHILE	\$3.7B

INTERNATIONAL EXPORTS

1	BRAZIL	\$13.4B
2	COLOMBIA	\$4.2B
3	ARGENTINA	\$3.6B
4	DOMINICAN REPUBLIC	\$3.1B
5	CHILE	\$3B

TRANSPORTATION STATISTICS AND FREIGHT MOVEMENT BY MODE



83%
TONNAGE

71%
VALUE

123,104 Public roadway mileage
12,130 State Highway System (SHS) mileage
30.7M Daily truck miles traveled on SHS
98 Public truck parking facilities



3.5%
TONNAGE

2.9%
VALUE

15 Deepwater seaports
4.1M Twenty-foot equivalent units (TEUs)
16.8M Annual cruise passengers



6.7%
TONNAGE

1.8%
VALUE

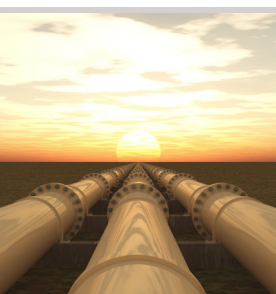
2,936 Miles of roads
6.9M Annual rail passenger traffic



0.1%
TONNAGE

5.4%
VALUE

129 Public use airports
20 Commercial service airports
2 Active spaceports



3.6%
TONNAGE

1%
VALUE

5,899 Miles of gas transmission and hazardous liquid pipelines



3.1%
TONNAGE

17.9%
VALUE

Includes shipments by multiple modes and by parcel delivery services, U.S. Postal Service, or couriers (capped at 150 pounds). This category is not limited to containerized or trailer-on-flatcar shipments.

FLORIDA COMMODITY FLOWS (2018-2045)



IMPORTS



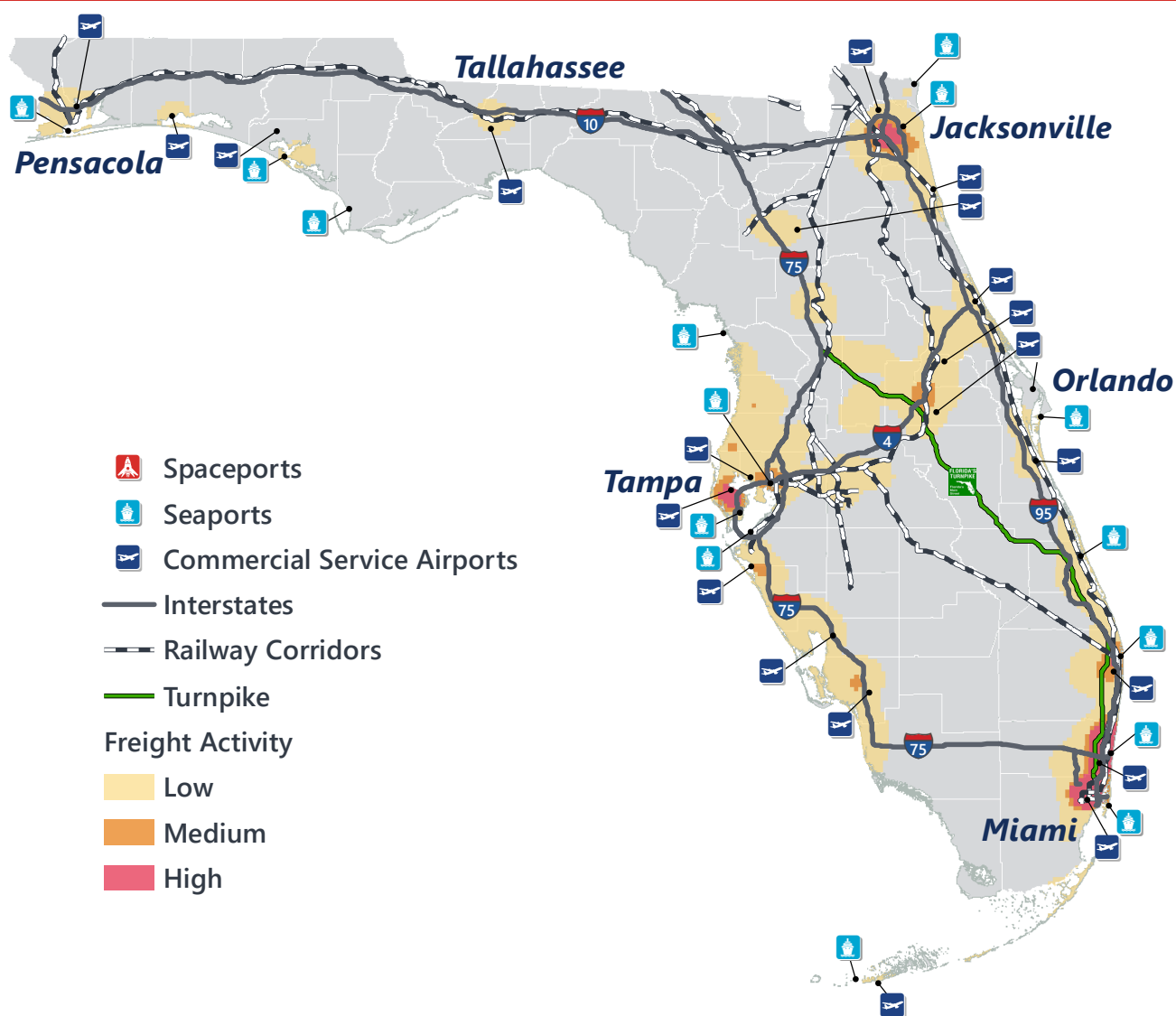
WITHIN FL



EXPORTS

	2018	2045	2018	2045	2018	2045
TONNAGE	142M	190M	656M	761M	57M	103M
VALUE	\$321B	\$690B	\$402B	\$844B	\$180B	\$606B

Freight Analysis Framework (FAF) 4.5.1.



Rickey Fitzgerald
 Manager, Freight & Multimodal Operations
 Florida Department of Transportation
 605 Suwannee Street, Tallahassee, FL 32399
 Rickey.Fitzgerald@dot.state.fl.us
 850.414.4702