

# FREIGHT AND LOGISTICS OVERVIEW

FEBRUARY 2021

# DUVAL COUNTY

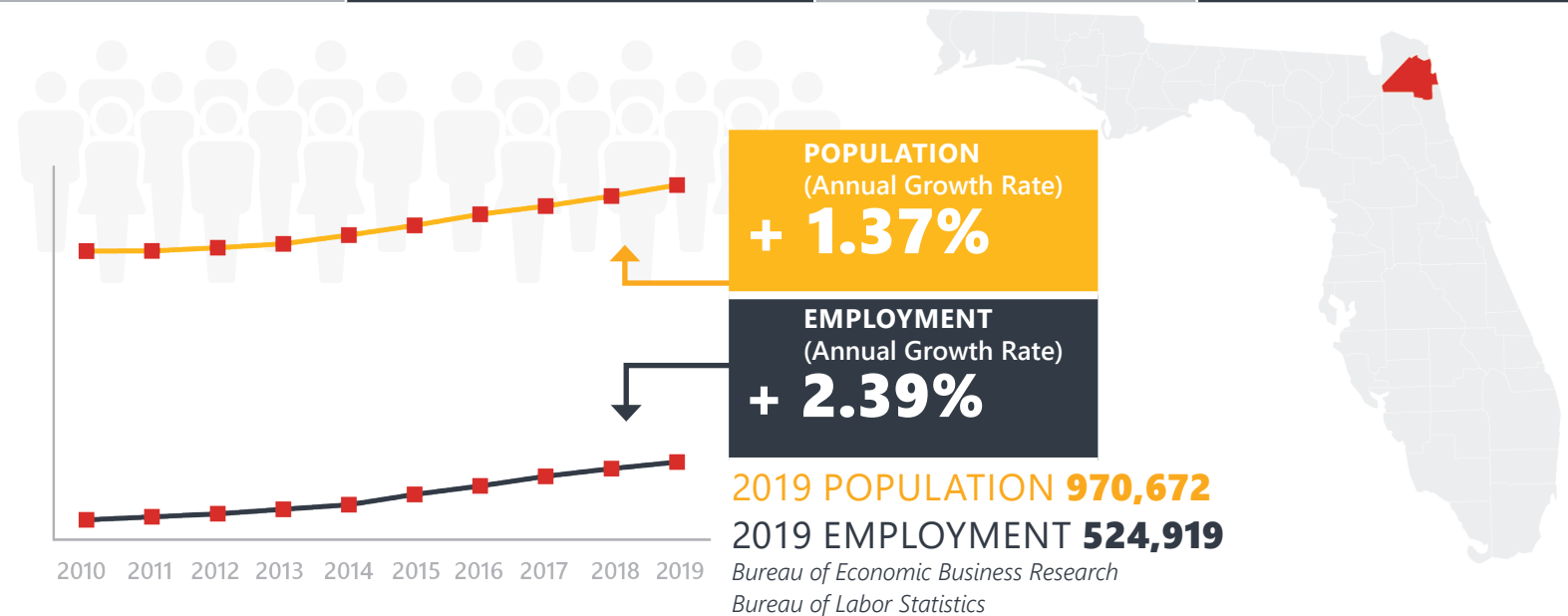


*Mission: The department will provide a safe transportation system that ensures the mobility of people and goods, enhances economic prosperity, and preserves the quality of our environment and communities.*



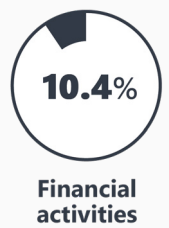
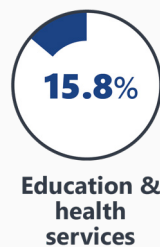
# DUVAL COUNTY HIGHLIGHTS

"THE RIVER CITY"		AREA (SQ . MILES)	918
COUNTY SEAT	JACKSONVILLE	LARGEST CITY (SIZE)	JACKSONVILLE



## LARGEST INDUSTRY SECTORS BY EMPLOYMENT (2019)

*Office of Economic and Demographic Research*



## FASTEST GROWING INDUSTRIES (2010-2019)

TRADE, TRANSPORTATION, AND UTILITIES	JOBS ADDED	25,035
EDUCATION AND HEALTH SERVICES		19,238
LEISURE AND HOSPITALITY		14,026
CONSTRUCTION		12,677
PROFESSIONAL AND BUSINESS SERVICES		11,864

*Bureau of Labor Statistics*

## DID YOU KNOW?

Duval county is an international leader in the production and export of liquefied natural gas (LNG). JAXPORT boasts the world's first LNG-powered container ships and North America's first LNG bunker barge.

Jacksonville is the largest city in the continental United States with over 875 square miles.

Jacksonville offers 40 daily trains via two Class I railroads – CSX and Norfolk Southern – and regional railroad Florida East Coast Railway.



# COMMODITY FLOW HIGHLIGHTS



## IMPORTS

## WITHIN COUNTY

## EXPORTS

**2018**

**2045**

**2018**

**2045**

**2018**

**2045**

Tonnage:	30.6 M	38.13 M	11.43 M	17.29 M	22.16 M	35.8 M
Value:	\$ 62.51 B	\$ 81.61 B	\$ 34.69 B	\$ 46.49 B	\$ 57.5 B	\$ 90.37 B



### TOP COMMODITY *by Tonnage, 2018*



Nonmetallic Minerals	6,640,299
Petroleum or Coal Products	4,932,301
Clay, Concrete, Glass, Stone	2,734,424
Warehouse, Distribution Center and Drayage Movements	2,690,243
Misc. Mixed Shipments	2,594,978

Petroleum or Coal Products	5,321,309
Misc. Mixed Shipments	3,080,735
Warehouse, Distribution Center and Drayage Movements	2,525,177
Nonmetallic Minerals	1,889,851
Food or Kindred Products	1,735,532



### TOP COMMODITY *by Value, 2018*



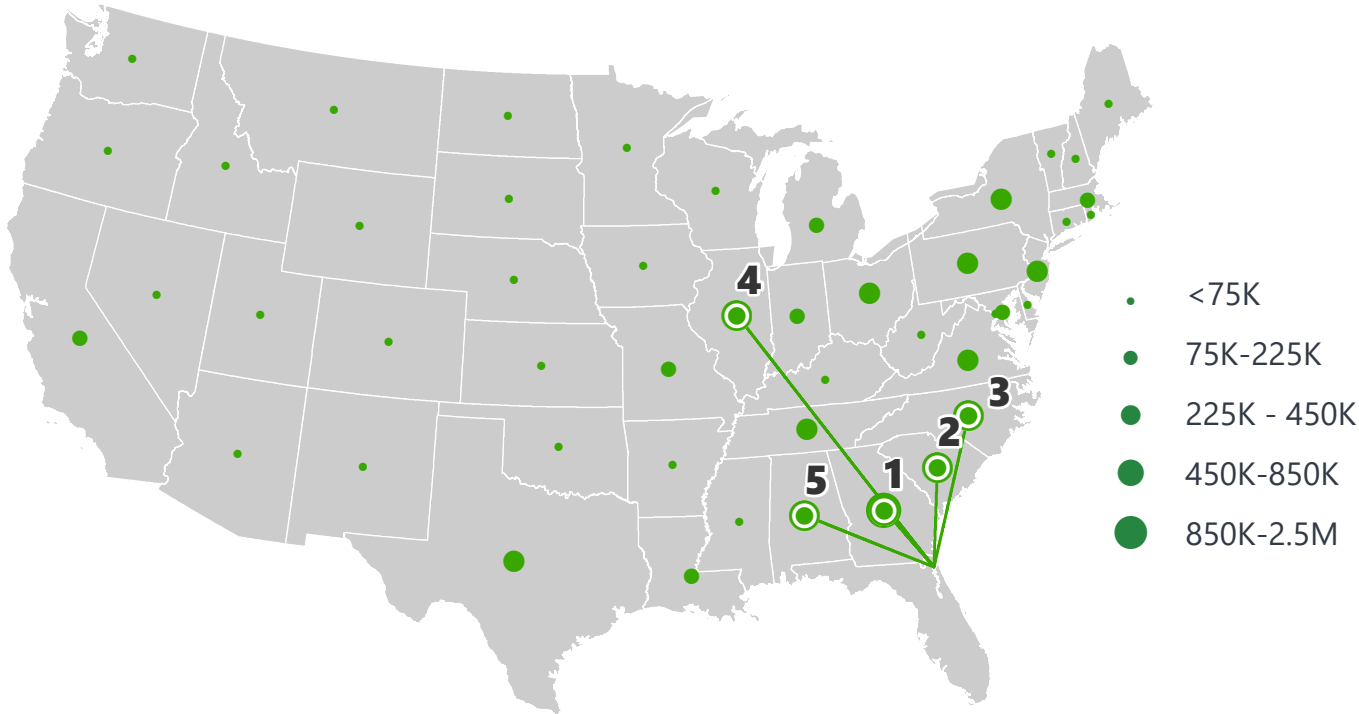
Transportation Equipment	\$ 15,911,241,531
Misc. Mixed Shipments	\$ 13,321,072,589
Warehouse, Distribution Center and Drayage Movements	\$ 6,875,282,767
Food or Kindred Products	\$ 4,278,000,302
Petroleum or Coal Products	\$ 2,880,067,722

Transportation Equipment	\$ 17,654,102,604
Misc. Mixed Shipments	\$ 15,844,945,233
Warehouse, Distribution Center and Drayage Movements	\$ 6,068,617,141
Petroleum or Coal Products	\$ 2,492,155,761
Instruments, Photo and Optical Equipment	\$ 1,965,078,531

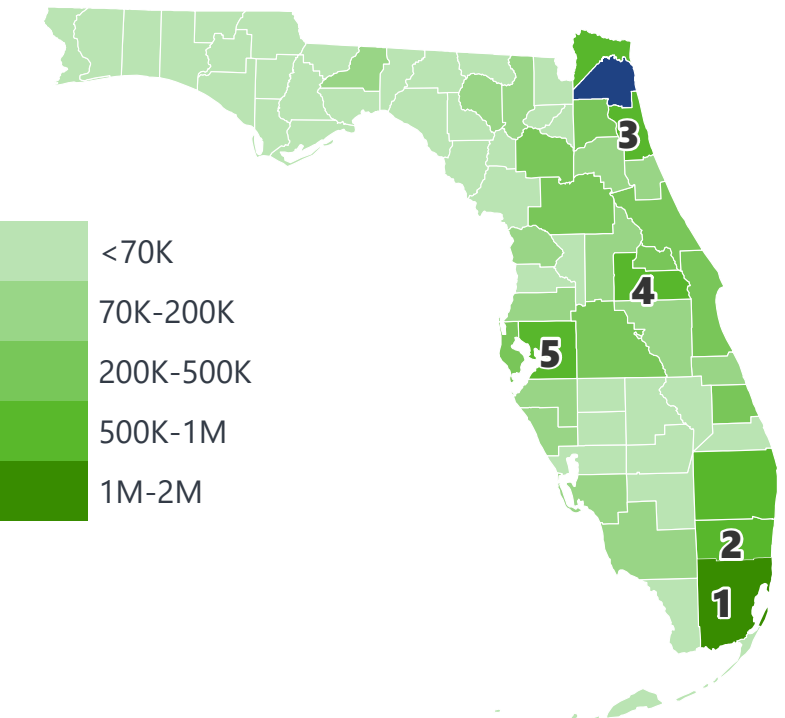


# DUVAL COUNTY EXPORTS AND IMPORTS

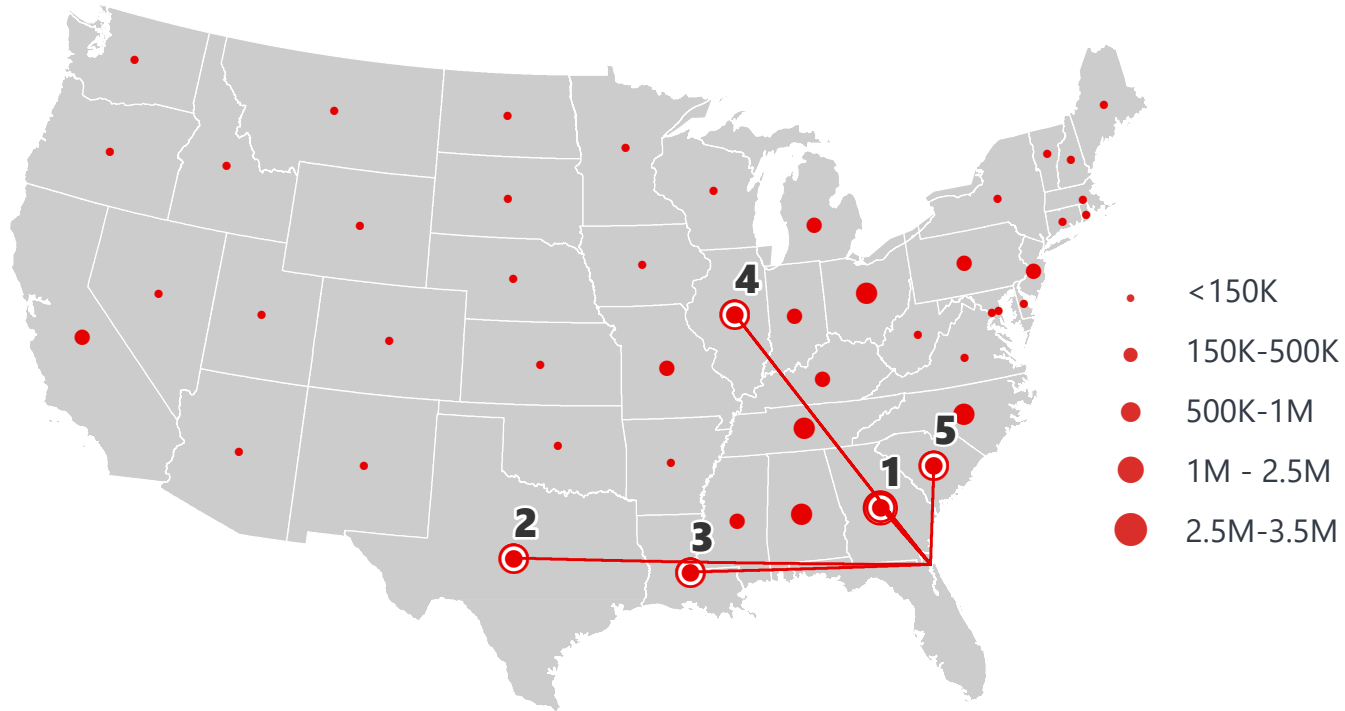
DOMESTIC EXPORTS (TONS)



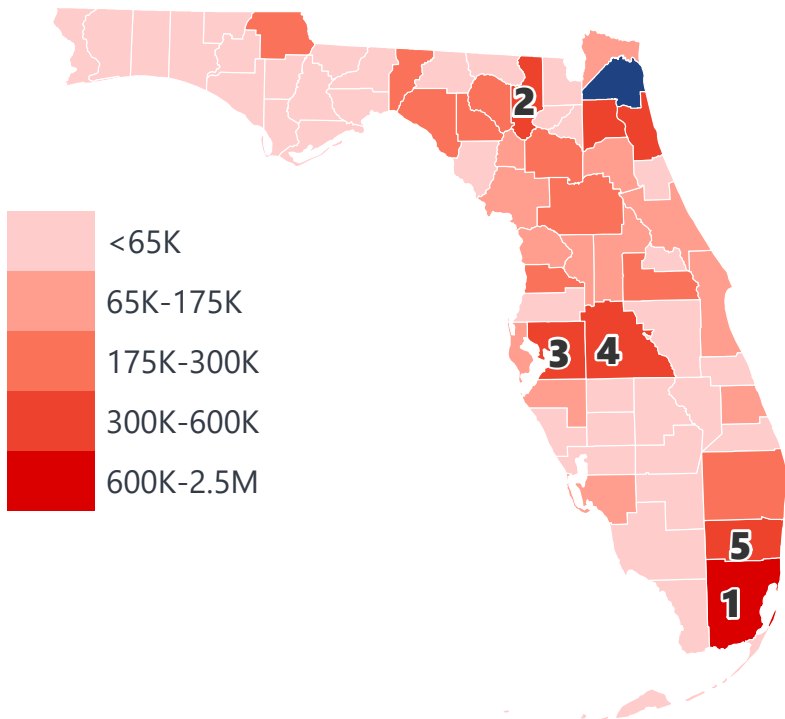
INTRASTATE EXPORTS (TONS)



DOMESTIC IMPORTS (TONS)



INTRASTATE IMPORTS (TONS)



## DOMESTIC EXPORTS (TONNAGE)

1	Georgia	2,581,126
2	South Carolina	832,719
3	North Carolina	713,017
4	Illinois	601,457
5	Alabama	429,100

## INTRASTATE EXPORTS (TONNAGE)

1	Miami-Dade	1,856,242
2	Broward	1,079,467
3	St. Johns	1,019,890
4	Orange	932,746
5	Hillsborough	791,169

## DOMESTIC IMPORTS (TONNAGE)

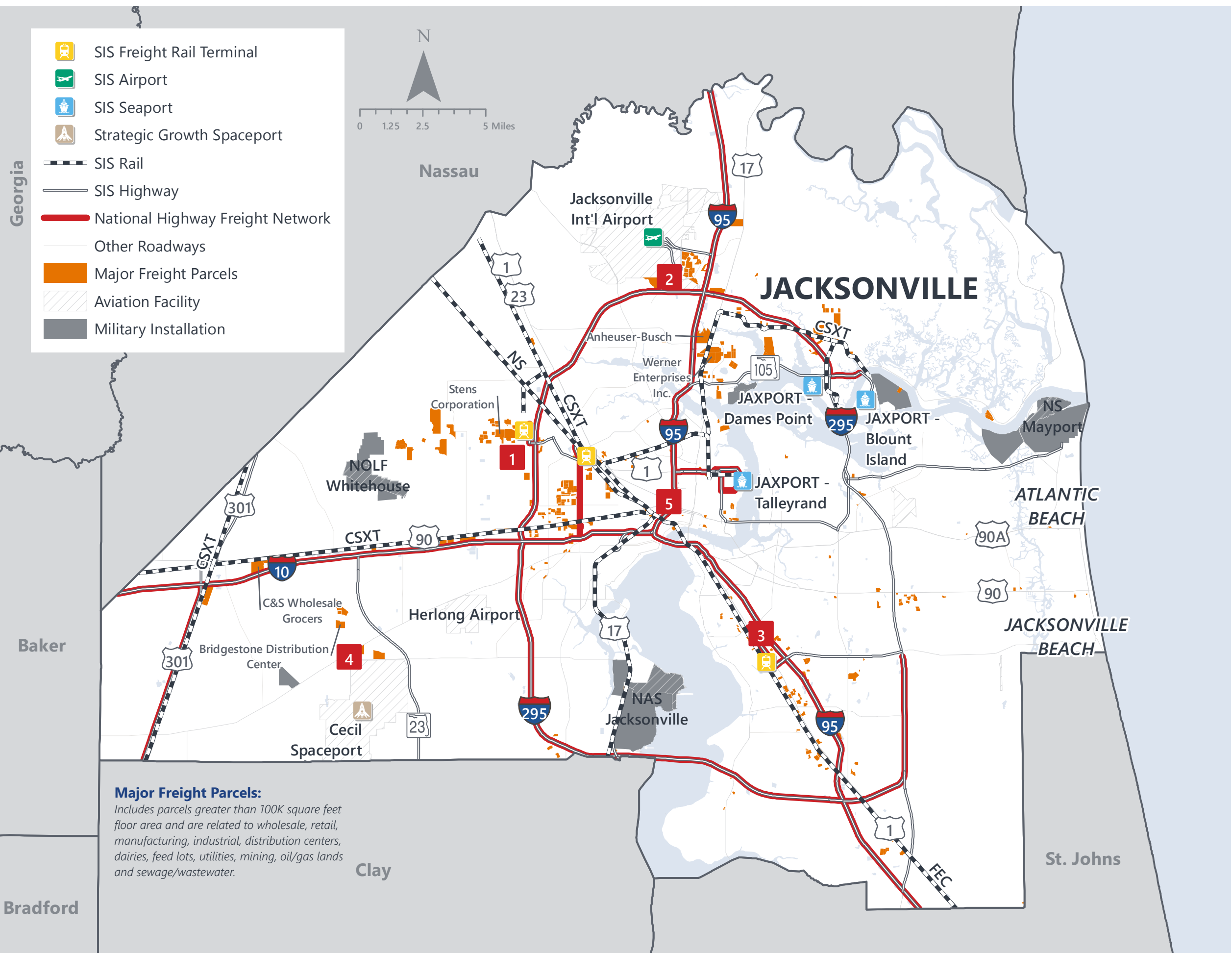
1	Georgia	3,433,664
2	Texas	2,428,643
3	Louisiana	2,208,496
4	Illinois	1,519,309
5	South Carolina	955,596

## INTRASTATE IMPORTS (TONNAGE)

1	Miami-Dade	2,541,702
2	Columbia	605,920
3	Hillsborough	568,768
4	Polk	461,690
5	Broward	416,740



# DUVAL COUNTY FREIGHT INFRASTRUCTURE



## LARGEST FREIGHT EMPLOYERS

1	UPS	3K-4K
2	Amazon	3K-4K
3	Johnson & Johnson	1K-2K
4	Amazon	900-1K
5	USPS	900-1K

## MAJOR FREIGHT LAND USES

139.8 M SQ.FT Floor Area

75.30%	Warehousing and distribution centers
14.62%	Light manufacturing
3.68%	Heavy industrial
1.99%	Utilities
1.77%	Canneries, bottlers and brewers, distilleries, wineries

1.89 B SQ.FT LAND AREA

63.27%	Sewage disposal and waste land
18.36%	Warehousing and distribution centers
5.25%	Open storage
4.77%	Light manufacturing
4.04%	Utilities



# MAJOR COUNTY COMMODITIES



## IMPORTS



### TOP COMMODITY by Tonnage, 2018 (relative to Florida)

FL Rank	Commodity	% Florida Share
1	Shipping Containers	90.49%
1	Metallic Ores	73.90%
1	Misc. Mixed Shipments	38.27%
1	Misc. Freight Shipments	37.99%
1	Apparel or Related Products	35.64%

## EXPORTS



FL Rank	Commodity	% Florida Share
1	Misc. Mixed Shipments	74.58%
1	Transportation Equipment	56.86%
1	Furniture or Fixtures	50.94%
2	Shipping Containers	34.77%
2	Misc. Freight Shipments	33.88%

### TOP COMMODITY by Value, 2018 (relative to Florida)

FL Rank	Commodity	% Florida Share
1	Misc. Mixed Shipments	37.97%
2	Metallic Ores	32.58%
1	Apparel or Related Products	24.29%
1	Transportation Equipment	21.65%
1	Ordnance or Accessories	17.23%

FL Rank	Commodity	% Florida Share
1	Misc. Mixed Shipments	72.47%
1	Furniture or Fixtures	41.03%
1	Transportation Equipment	40.95%
1	Leather or Leather Products	40.58%
1	Pulp, Paper or Allied Products	30.71%





# TRANSPORTATION STATISTICS AND FREIGHT MOVEMENT BY MODE



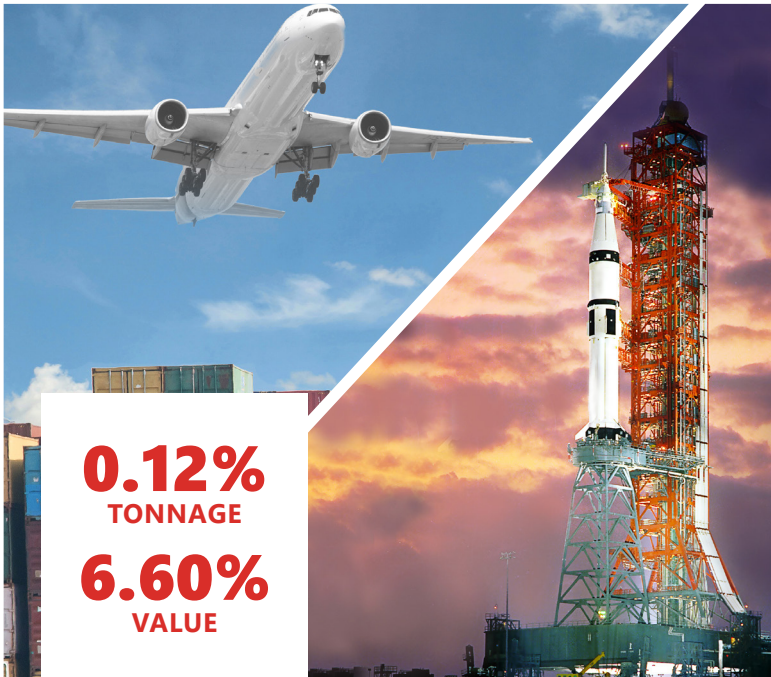
**1.73 M** | Daily Truck Miles Traveled  
**1.92** | Planning Time Index  
**4,637** | Public Roadway Mileage



**1 Major Seaport** | JAXPORT



**106.72** | Class I Mainline Miles (CSX, NS)  
**16.57** | Class II Mainline Miles (FEC)  
**-** | Class III Mainline Miles



**1 Major Airport** | Jacksonville International Airport  
**1 Active Spaceport** | Cecil Spaceport



# FLORIDA HIGHLIGHTS

**3rd most populous** US State

**\$1T Gross** Domestic Product

**4th Largest** US Economy and **17th Largest** Economy in World

Nation's **3rd largest** workforce

**1 in 5 U.S. exporters** are located in Florida

**\$153B** International Trade

**1.76M jobs supported** by Trade, Transportation and Utilities industry sector

**1.25M jobs supported** by Leisure and Hospitality industry sector

**131M** annual visitors

CAPITAL **TALLAHASSEE**

AREA  
(SQ. MILES) **53,624**

LARGEST  
CITY (SIZE) **JACKSONVILLE**

POPULATION  
(2019) **21,208,589**

ANNUAL POP  
GROWTH RATE  
(2010-2019) **1.4%**

EMPLOYMENT  
(2019) **8,884,065**

ANNUAL EMP  
GROWTH RATE  
(2010-2019) **2.8%**

*Bureau of Economic Business Research,  
Bureau of Labor Statistics*

## DOMESTIC IMPORTS

<b>1</b>	<b>GEORGIA</b>	\$44B
<b>2</b>	<b>CALIFORNIA</b>	\$29B
<b>3</b>	<b>TEXAS</b>	\$26B
<b>4</b>	<b>ALABAMA</b>	\$18B
<b>5</b>	<b>ILLINOIS</b>	\$18B

## DOMESTIC EXPORTS

<b>1</b>	<b>GEORGIA</b>	\$22B
<b>2</b>	<b>TEXAS</b>	\$19B
<b>3</b>	<b>CALIFORNIA</b>	\$15B
<b>4</b>	<b>NORTH CAROLINA</b>	\$12B
<b>5</b>	<b>NEW YORK</b>	\$10B

## INTERNATIONAL IMPORTS

<b>1</b>	<b>CHINA</b>	\$9.5B
<b>2</b>	<b>JAPAN</b>	\$6.5B
<b>3</b>	<b>BRAZIL</b>	\$6.4B
<b>4</b>	<b>MEXICO</b>	\$4.5B
<b>5</b>	<b>CHILE</b>	\$3.7B

## INTERNATIONAL EXPORTS

<b>1</b>	<b>BRAZIL</b>	\$13.4B
<b>2</b>	<b>COLOMBIA</b>	\$4.2B
<b>3</b>	<b>ARGENTINA</b>	\$3.6B
<b>4</b>	<b>DOMINICAN REPUBLIC</b>	\$3.1B
<b>5</b>	<b>CHILE</b>	\$3B



# TRANSPORTATION STATISTICS AND FREIGHT MOVEMENT BY MODE



**83%**  
TONNAGE

**71%**  
VALUE

**123,104** Public roadway mileage  
**12,130** State Highway System (SHS) mileage  
**30.7M** Daily truck miles traveled on SHS  
**98** Public truck parking facilities



**3.5%**  
TONNAGE

**2.9%**  
VALUE

**15** Deepwater seaports  
**4.1M** Twenty-foot equivalent units (TEUs)  
**16.8M** Annual cruise passengers



**6.7%**  
TONNAGE

**1.8%**  
VALUE

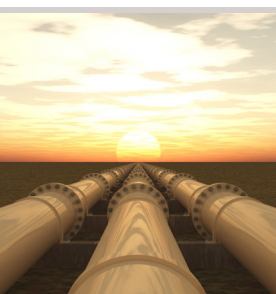
**2,936** Miles of roads  
**6.9M** Annual rail passenger traffic



**0.1%**  
TONNAGE

**5.4%**  
VALUE

**129** Public use airports  
**20** Commercial service airports  
**2** Active spaceports



**3.6%**  
TONNAGE

**1%**  
VALUE

**5,899** Miles of gas transmission and hazardous liquid pipelines



**3.1%**  
TONNAGE

**17.9%**  
VALUE

Includes shipments by multiple modes and by parcel delivery services, U.S. Postal Service, or couriers (capped at 150 pounds). This category is not limited to containerized or trailer-on-flatcar shipments.



# FLORIDA COMMODITY FLOWS (2018-2045)



IMPORTS



WITHIN FL



EXPORTS

	2018	2045	2018	2045	2018	2045
TONNAGE	142M	190M	656M	761M	57M	103M
VALUE	\$321B	\$690B	\$402B	\$844B	\$180B	\$606B

Freight Analysis Framework (FAF) 4.5.1.



**Rickey Fitzgerald**  
 Manager, Freight & Multimodal Operations  
 Florida Department of Transportation  
 605 Suwannee Street, Tallahassee, FL 32399  
 Rickey.Fitzgerald@dot.state.fl.us  
 850.414.4702