

FREIGHT AND LOGISTICS OVERVIEW

FEBRUARY 2021

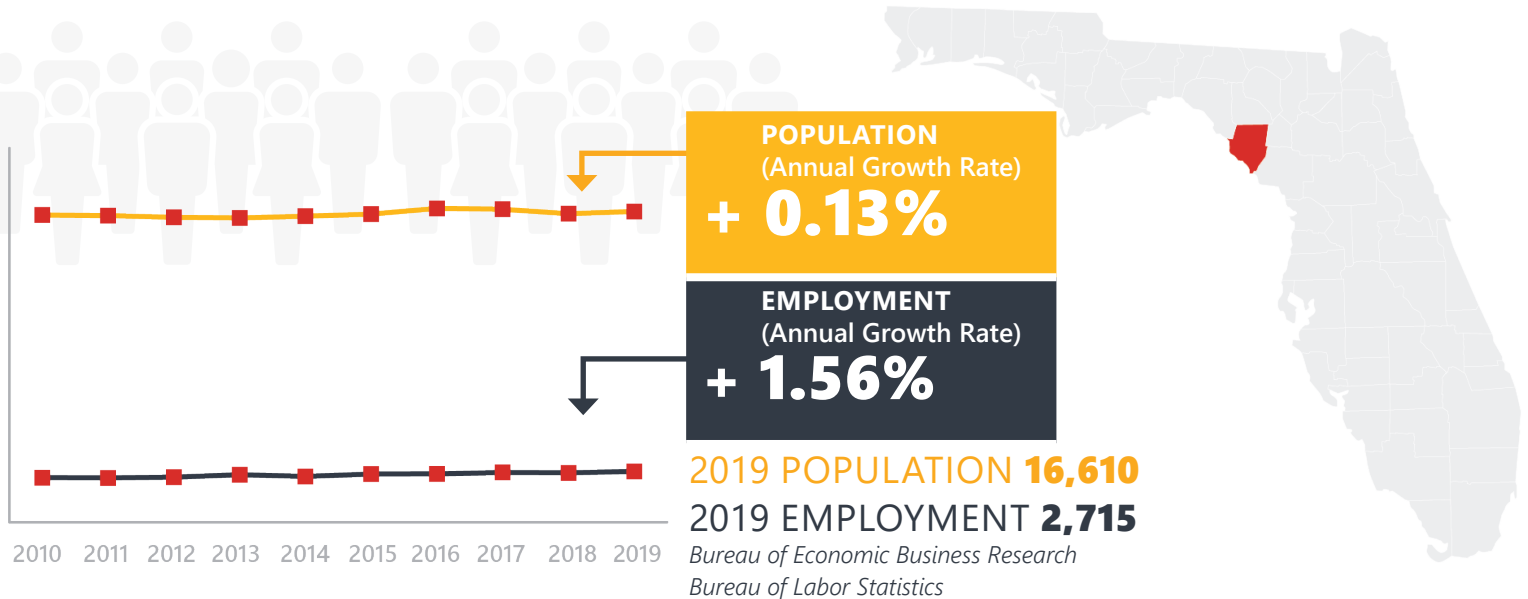
DIXIE COUNTY



Mission: The department will provide a safe transportation system that ensures the mobility of people and goods, enhances economic prosperity, and preserves the quality of our environment and communities.

DIXIE COUNTY HIGHLIGHTS

"FLORIDA'S HIDDEN COAST"		AREA (SQ . MILES)	864
COUNTY SEAT	CROSS CITY	LARGEST CITY (SIZE)	CROSS CITY



LARGEST INDUSTRY SECTORS BY EMPLOYMENT (2019)

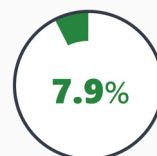
Office of Economic and Demographic Research



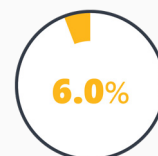
Manufacturing



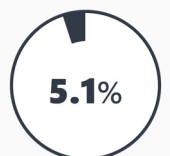
Trade,
transportation
& utilities



Leisure &
hospitality



Education &
health
services



Construction

FASTEST GROWING INDUSTRIES (2010-2019)

MANUFACTURING	JOBS ADDED	68
TRADE, TRANSPORTATION, AND UTILITIES		68
CONSTRUCTION		67
LEISURE AND HOSPITALITY		45
OTHER SERVICES		44

Bureau of Labor Statistics

DID YOU KNOW?

Dixie County is home to the world's only four-headed swamp cabbage.

Three of the county's lines are defined by water: the Gulf of Mexico and the Steinhatchee and Suwannee rivers.

The Nature Coast State Trail, a 32 mile multi-use trail, highlights a historic train trestle trail that crosses through Dixie, Gilchrist, and Levy Counties and over the Suwannee River.

COMMODITY FLOW HIGHLIGHTS



IMPORTS

WITHIN COUNTY

EXPORTS

	2018	2045	2018	2045	2018	2045
Tonnage:	0.26 M	0.2 M	17.09 K	5.74 K	0.51 M	0.41 M
Value:	\$ 0.1 B	\$ 0.1 B	\$ 4.02 M	\$ 1.65 M	\$ 0.22 B	\$ 0.21 B



TOP COMMODITY by Tonnage, 2018



Lumber or Wood Products	189,649
Petroleum or Coal Products	24,032
Warehouse, Distribution Center and Drayage Movements	16,273
Nonmetallic Minerals	10,687
Clay, Concrete, Glass, Stone	8,657

Lumber or Wood Products	486,031
Farm Products	12,335
Waste or Scrap Materials	10,685
Warehouse, Distribution Center and Drayage Movements	3,230
Forest Products	703



TOP COMMODITY by Value, 2018

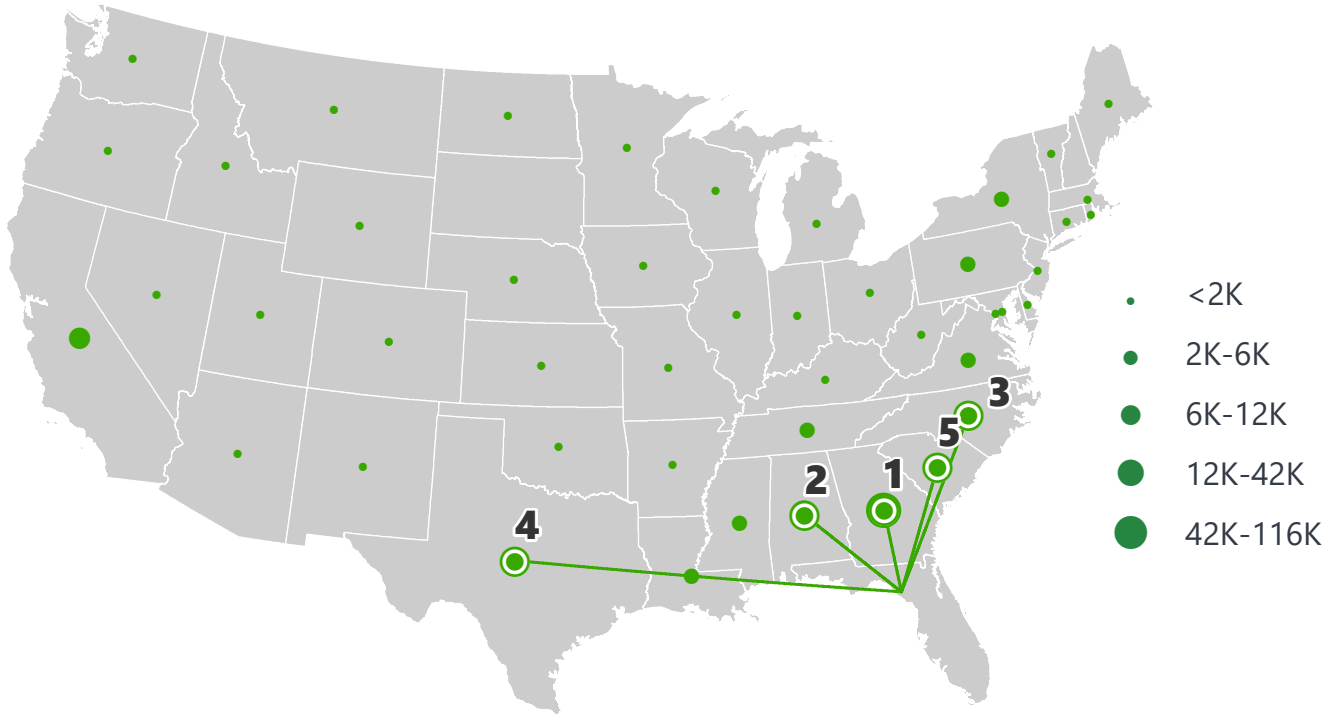


Lumber or Wood Products	\$ 43,989,234
Warehouse, Distribution Center and Drayage Movements	\$ 29,069,538
Petroleum or Coal Products	\$ 14,708,826
Transportation Equipment	\$ 4,992,795
Forest Products	\$ 4,869,230

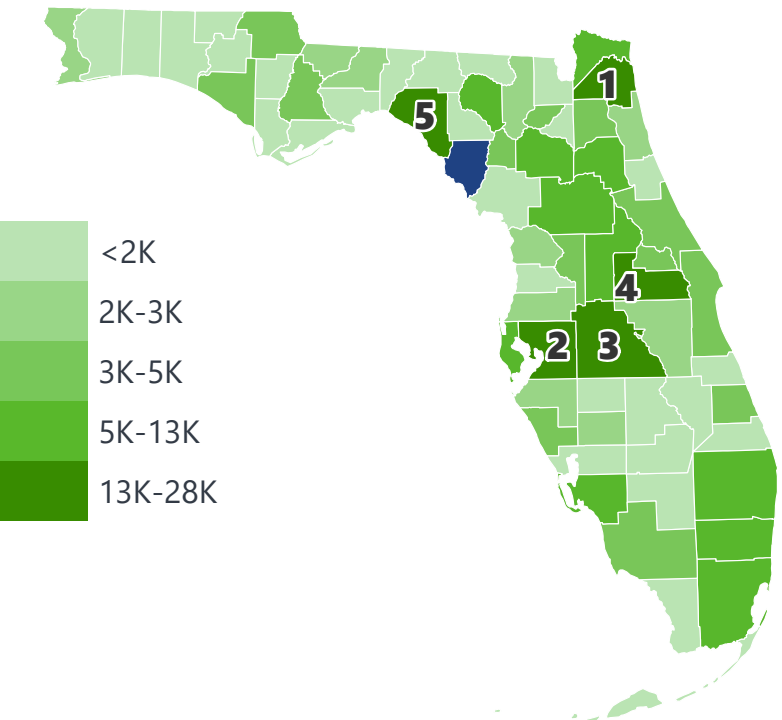
Lumber or Wood Products	\$ 205,499,423
Warehouse, Distribution Center and Drayage Movements	\$ 8,016,339
Farm Products	\$ 4,033,198
Waste or Scrap Materials	\$ 2,838,748
Fabricated Metal Products	\$ 1,154,072

DIXIE COUNTY EXPORTS AND IMPORTS

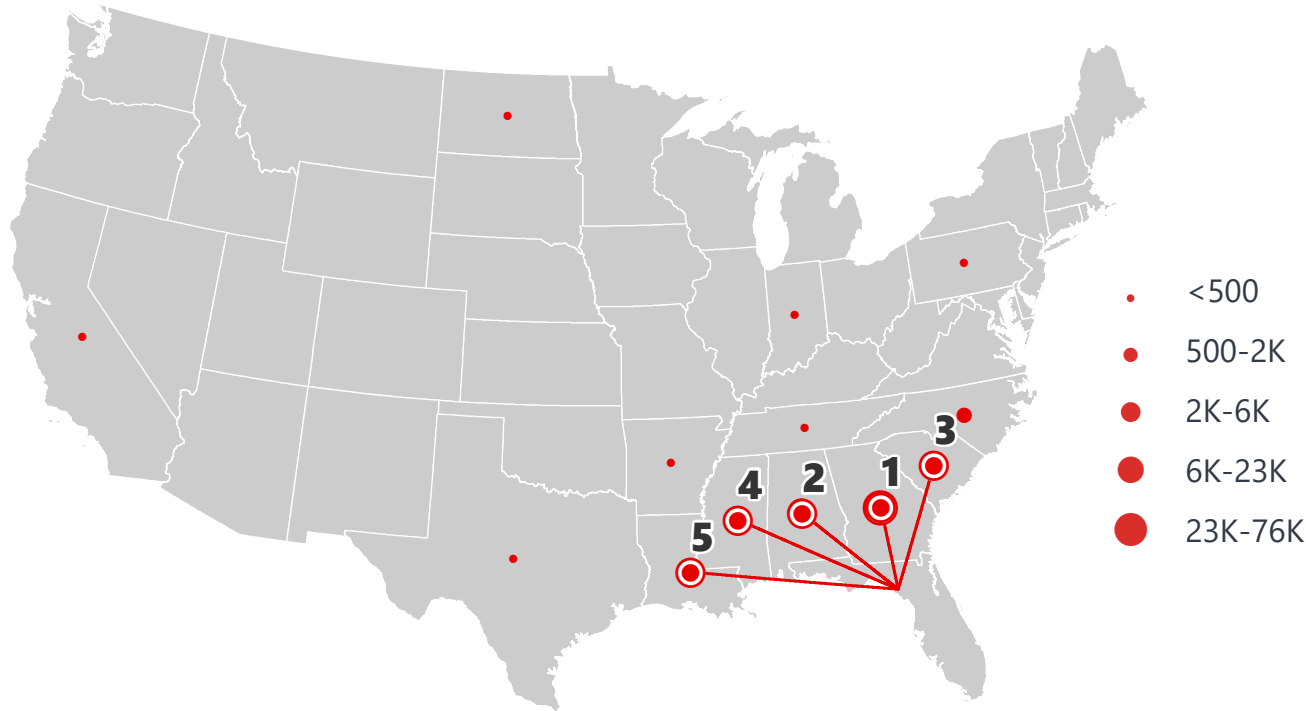
DOMESTIC EXPORTS (TONS)



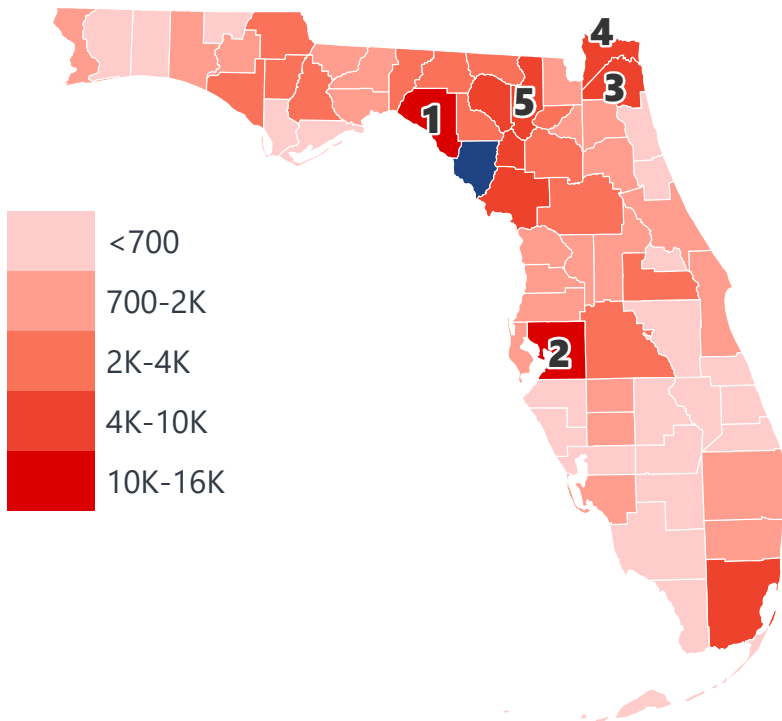
INTRASTATE EXPORTS (TONS)



DOMESTIC IMPORTS (TONS)



INTRASTATE IMPORTS (TONS)



DOMESTIC EXPORTS (TONNAGE)

1	Georgia	115,867
2	Alabama	41,279
3	North Carolina	11,697
4	Texas	8,008
5	South Carolina	7,569

INTRASTATE EXPORTS (TONNAGE)

1	Duval	27,110
2	Hillsborough	18,180
3	Polk	17,404
4	Orange	14,635
5	Taylor	14,155

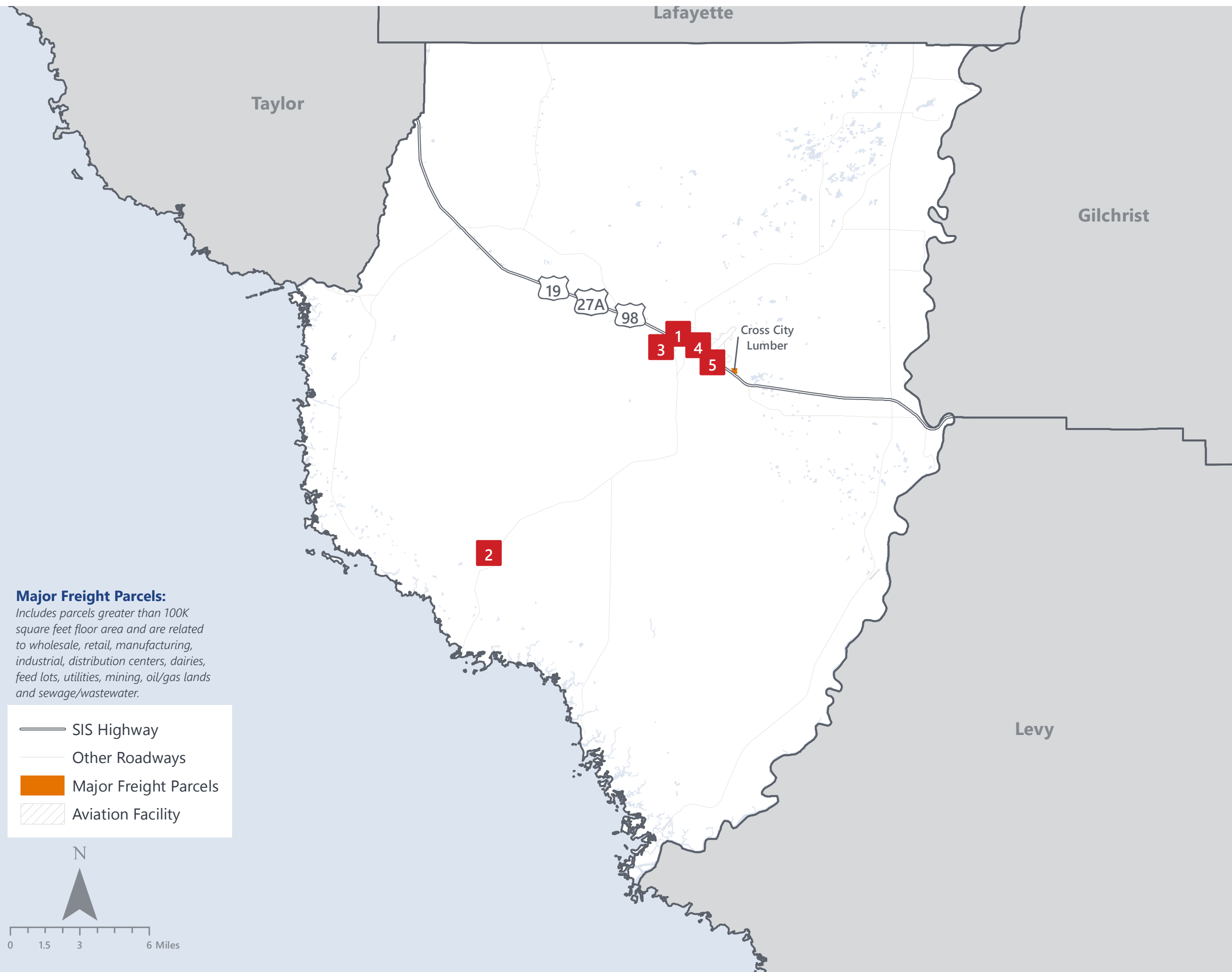
DOMESTIC IMPORTS (TONNAGE)

1	Georgia	75,585
2	Alabama	22,683
3	South Carolina	5,782
4	Mississippi	5,043
5	Louisiana	1,540

INTRASTATE IMPORTS (TONNAGE)

1	Taylor	15,653
2	Hillsborough	13,880
3	Duval	9,317
4	Nassau	6,473
5	Columbia	6,000

DIXIE COUNTY FREIGHT INFRASTRUCTURE



LARGEST FREIGHT EMPLOYERS

1	Suwannee Lumber Company	200-300
2	Gulf Coast Supply	100-200
3	Forestry Resources	50-100
4	Oldcastle Lawn & Garden	0-50
5	Cross City Veneer	0-50

MAJOR FREIGHT LAND USES

0.4 M SQ.FT Floor Area

65.23%	Lumber yards, sawmills, planing mills
18.39%	Light manufacturing
10.20%	Warehousing and distribution centers
3.11%	Fruit, vegetable and meat packing plants
1.23%	Utilities

22.9 M SQ.FT LAND AREA

65.88%	Lumber yards, sawmills, planing mills
8.01%	Light manufacturing
6.47%	Utilities
5.93%	Sewage disposal and waste land
3.61%	Warehousing and distribution centers

Florida Department of Economic Opportunity, 2018
Florida Department of Revenue, 2019

MAJOR COUNTY COMMODITIES



IMPORTS



TOP COMMODITY by Tonnage, 2018 (relative to Florida)

FL Rank	Commodity	% Florida Share
11	Forest Products	3.47%
19	Lumber or Wood Products	1.41%
61	Warehouse, Distribution Center and Drayage Movements	0.04%
61	Petroleum or Coal Products	0.03%
64	Clay, Concrete, Glass, Stone	0.02%

EXPORTS



FL Rank	Commodity	% Florida Share
5	Lumber or Wood Products	5.22%
37	Forest Products	0.37%
59	Farm Products	0.09%
59	Waste or Scrap Materials	0.04%
36	Marine Products	0.03%

TOP COMMODITY by Value, 2018 (relative to Florida)

FL Rank	Commodity	% Florida Share
11	Forest Products	3.17%
32	Lumber or Wood Products	0.56%
58	Warehouse, Distribution Center and Drayage Movements	0.04%
59	Petroleum or Coal Products	0.03%
64	Clay, Concrete, Glass, Stone	0.01%

FL Rank	Commodity	% Florida Share
6	Lumber or Wood Products	4.10%
37	Forest Products	0.34%
59	Farm Products	0.05%
59	Waste or Scrap Materials	0.04%
33	Marine Products	0.03%



TRANSPORTATION STATISTICS AND FREIGHT MOVEMENT BY MODE



48 K | Daily Truck Miles Traveled
- Planning Time Index
586 | Public Roadway Mileage



125 Miles | Distance from closest seaport
(JAXPORT)



- Class I Mainline Miles
- Class II Mainline Miles
- Class III Mainline Miles



68 Miles | Distance from closest airport
(Gainesville Regional Airport)

FLORIDA HIGHLIGHTS

3rd most populous US State

\$1T Gross Domestic Product

4th Largest US Economy and **17th Largest** Economy in World

Nation's **3rd largest** workforce

1 in 5 U.S. exporters are located in Florida

\$153B International Trade

1.76M jobs supported by Trade, Transportation and Utilities industry sector

1.25M jobs supported by Leisure and Hospitality industry sector

131M annual visitors

CAPITAL **TALLAHASSEE**

AREA
(SQ. MILES) **53,624**

LARGEST
CITY (SIZE) **JACKSONVILLE**

POPULATION
(2019) **21,208,589**

ANNUAL POP
GROWTH RATE
(2010-2019) **1.4%**

EMPLOYMENT
(2019) **8,884,065**

ANNUAL EMP
GROWTH RATE
(2010-2019) **2.8%**

*Bureau of Economic Business Research,
Bureau of Labor Statistics*

DOMESTIC IMPORTS

1	GEORGIA	\$44B
2	CALIFORNIA	\$29B
3	TEXAS	\$26B
4	ALABAMA	\$18B
5	ILLINOIS	\$18B

DOMESTIC EXPORTS

1	GEORGIA	\$22B
2	TEXAS	\$19B
3	CALIFORNIA	\$15B
4	NORTH CAROLINA	\$12B
5	NEW YORK	\$10B

INTERNATIONAL IMPORTS

1	CHINA	\$9.5B
2	JAPAN	\$6.5B
3	BRAZIL	\$6.4B
4	MEXICO	\$4.5B
5	CHILE	\$3.7B

INTERNATIONAL EXPORTS

1	BRAZIL	\$13.4B
2	COLOMBIA	\$4.2B
3	ARGENTINA	\$3.6B
4	DOMINICAN REPUBLIC	\$3.1B
5	CHILE	\$3B

TRANSPORTATION STATISTICS AND FREIGHT MOVEMENT BY MODE



83%
TONNAGE

71%
VALUE

123,104 Public roadway mileage
12,130 State Highway System (SHS) mileage
30.7M Daily truck miles traveled on SHS
98 Public truck parking facilities



3.5%
TONNAGE

2.9%
VALUE

15 Deepwater seaports
4.1M Twenty-foot equivalent units (TEUs)
16.8M Annual cruise passengers



6.7%
TONNAGE

1.8%
VALUE

2,936 Miles of roads
6.9M Annual rail passenger traffic



0.1%
TONNAGE

5.4%
VALUE

129 Public use airports
20 Commercial service airports
2 Active spaceports



3.6%
TONNAGE

1%
VALUE

5,899 Miles of gas transmission and hazardous liquid pipelines



3.1%
TONNAGE

17.9%
VALUE

Includes shipments by multiple modes and by parcel delivery services, U.S. Postal Service, or couriers (capped at 150 pounds). This category is not limited to containerized or trailer-on-flatcar shipments.

FLORIDA COMMODITY FLOWS (2018-2045)



IMPORTS



WITHIN FL



EXPORTS

	2018	2045	2018	2045	2018	2045
TONNAGE	142M	190M	656M	761M	57M	103M
VALUE	\$321B	\$690B	\$402B	\$844B	\$180B	\$606B

Freight Analysis Framework (FAF) 4.5.1.



Rickey Fitzgerald
 Manager, Freight & Multimodal Operations
 Florida Department of Transportation
 605 Suwannee Street, Tallahassee, FL 32399
 Rickey.Fitzgerald@dot.state.fl.us
 850.414.4702