

# FREIGHT AND LOGISTICS OVERVIEW

FEBRUARY 2021

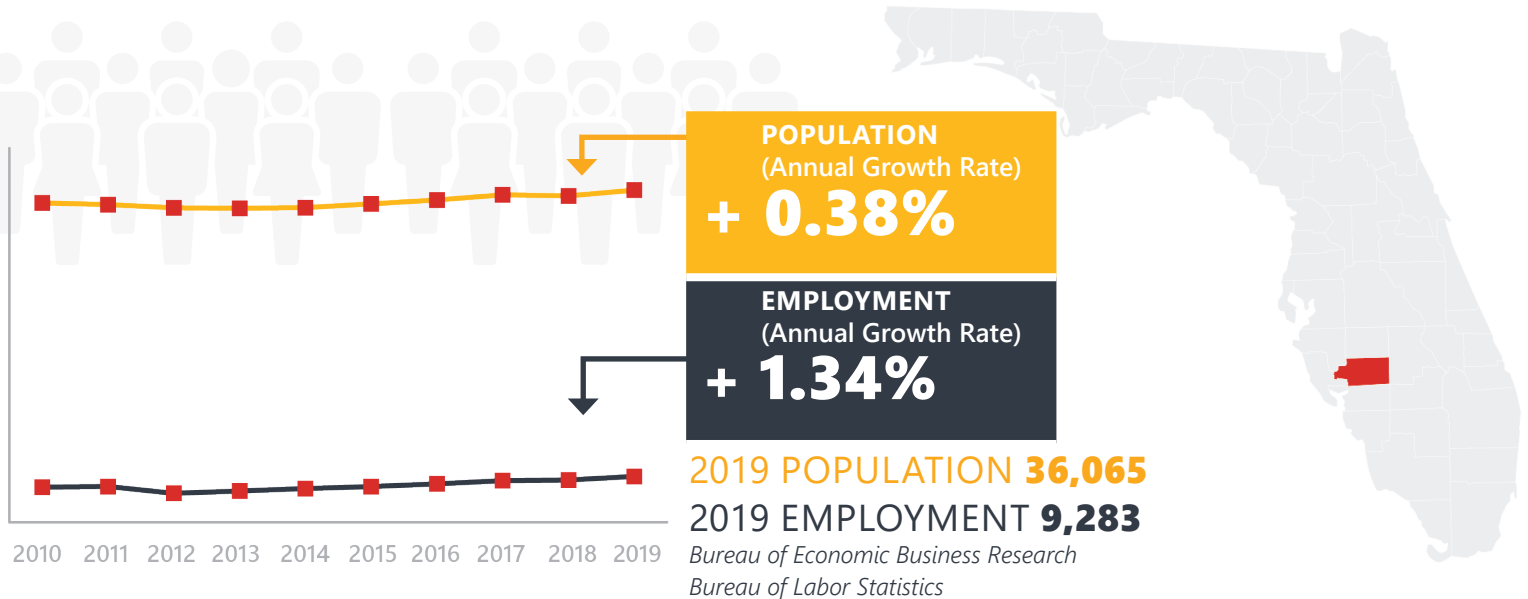
# DESOTO COUNTY



*Mission: The department will provide a safe transportation system that ensures the mobility of people and goods, enhances economic prosperity, and preserves the quality of our environment and communities.*

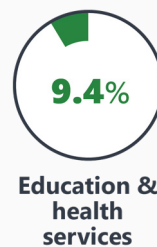
# DESOTO COUNTY HIGHLIGHTS

"FLORIDA'S ULTIMATE HEARTLAND LOCATION"		AREA (SQ . MILES)	640
COUNTY SEAT	ARCADIA	LARGEST CITY (SIZE)	ARCADIA



## LARGEST INDUSTRY SECTORS BY EMPLOYMENT (2019)

*Office of Economic and Demographic Research*



## FASTEST GROWING INDUSTRIES (2010-2019)

TRADE, TRANSPORTATION, AND UTILITIES	JOBS ADDED	596
CONSTRUCTION		443
LEISURE AND HOSPITALITY		341
INFORMATION		99
MANUFACTURING		39

*Bureau of Labor Statistics*

## DID YOU KNOW?

Arcadia is one of the top 3 livestock markets in the state of Florida.

DeSoto is one of the top counties exporting citrus fruits (12%) in the state of Florida.

Arcadia is home to the largest and longest running rodeo in Florida since 1928. The rodeo attracts more than 17,700 spectators each year and is a great benefit to the local economy.



# COMMODITY FLOW HIGHLIGHTS



## IMPORTS

## WITHIN COUNTY

## EXPORTS

**2018**

**2045**

**2018**

**2045**

**2018**

**2045**

Tonnage:	1 M	1.11 M	11.2 K	11.6 K	0.63 M	0.74 M
Value:	\$ 0.31 B	\$ 0.41 B	\$ 5.55 M	\$ 6.31 M	\$ 0.36 B	\$ 0.46 B



### TOP COMMODITY by Tonnage, 2018



Nonmetallic Minerals	401,213
Waste or Scrap Materials	258,462
Clay, Concrete, Glass, Stone	113,995
Petroleum or Coal Products	82,754
Warehouse, Distribution Center and Drayage Movements	53,074

Farm Products	350,079
Clay, Concrete, Glass, Stone	102,566
Lumber or Wood Products	70,020
Food or Kindred Products	65,056
Waste or Scrap Materials	25,798



### TOP COMMODITY by Value, 2018

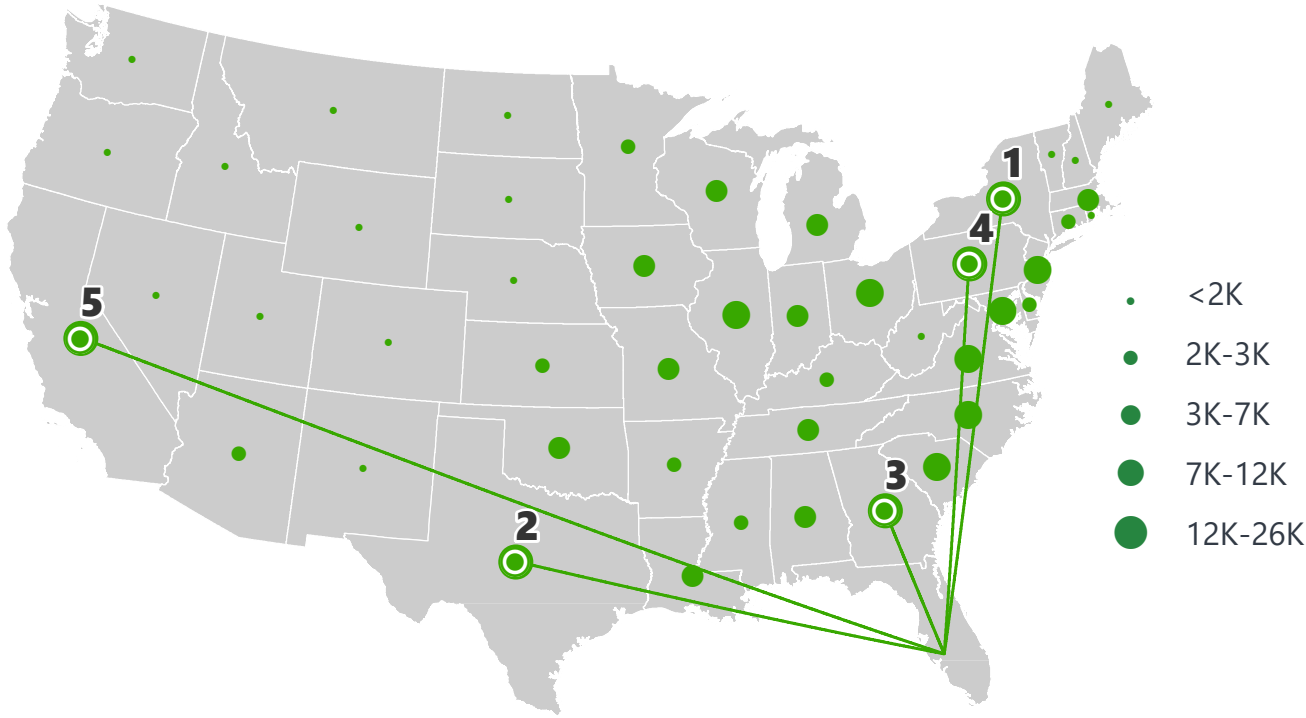


Warehouse, Distribution Center and Drayage Movements	\$ 101,944,484
Waste or Scrap Materials	\$ 66,485,250
Petroleum or Coal Products	\$ 40,066,226
Transportation Equipment	\$ 24,793,979
Farm Products	\$ 20,827,488

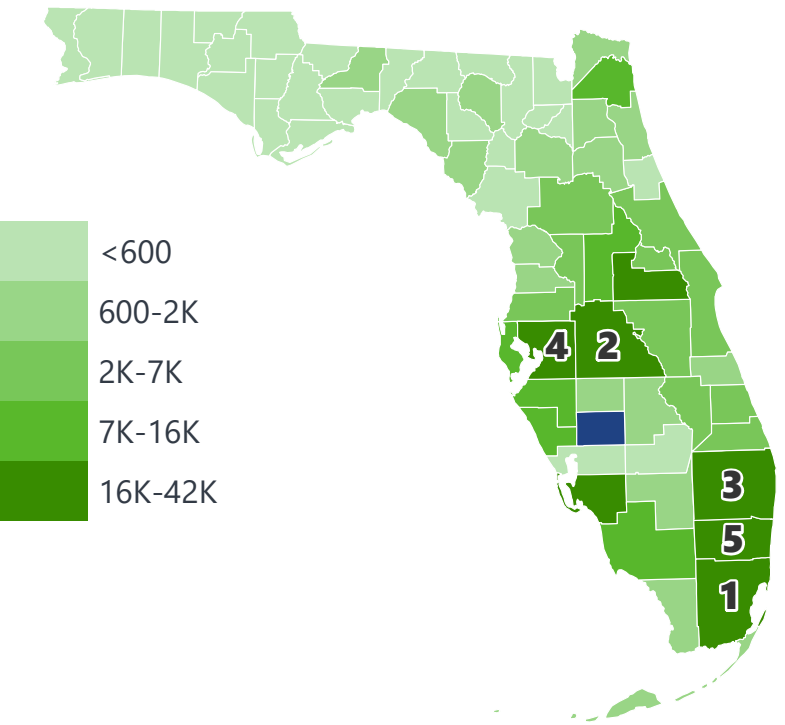
Farm Products	\$ 177,797,066
Food or Kindred Products	\$ 87,245,347
Clay, Concrete, Glass, Stone	\$ 50,505,861
Rubber or Misc. Plastics	\$ 16,648,876
Lumber or Wood Products	\$ 13,586,057

# DESOTO COUNTY EXPORTS AND IMPORTS

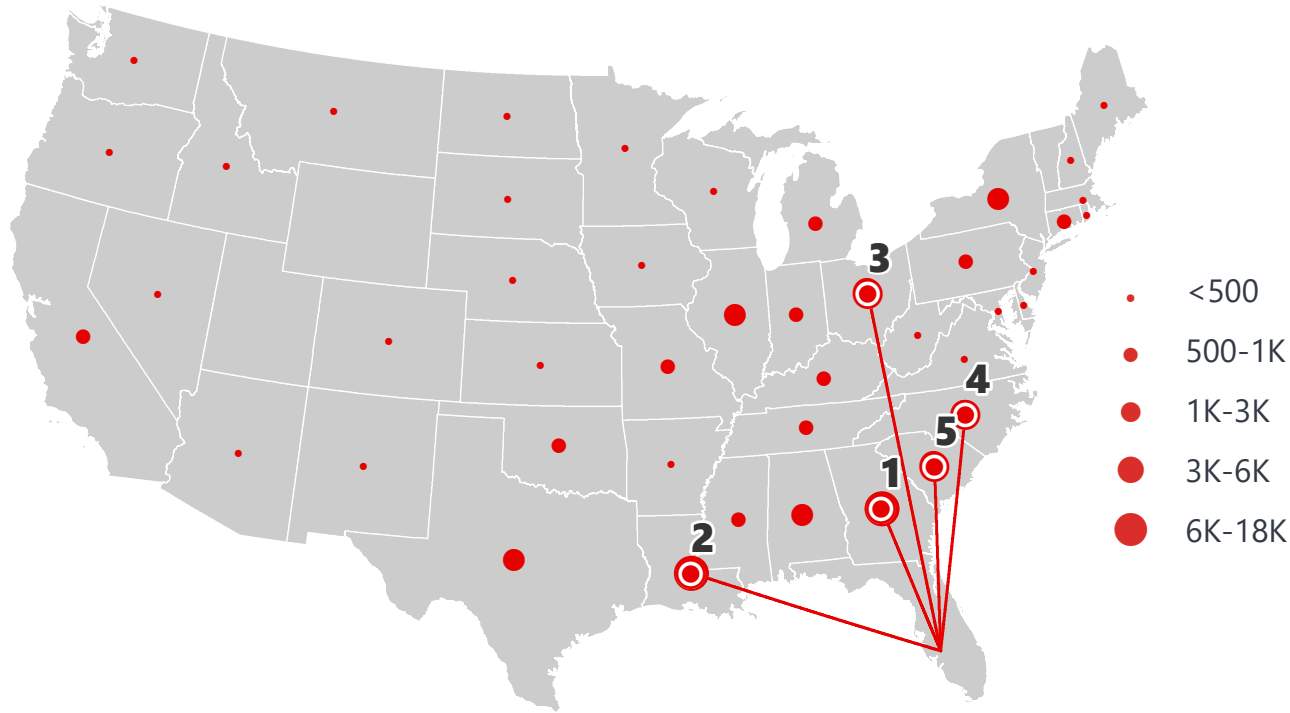
DOMESTIC EXPORTS (TONS)



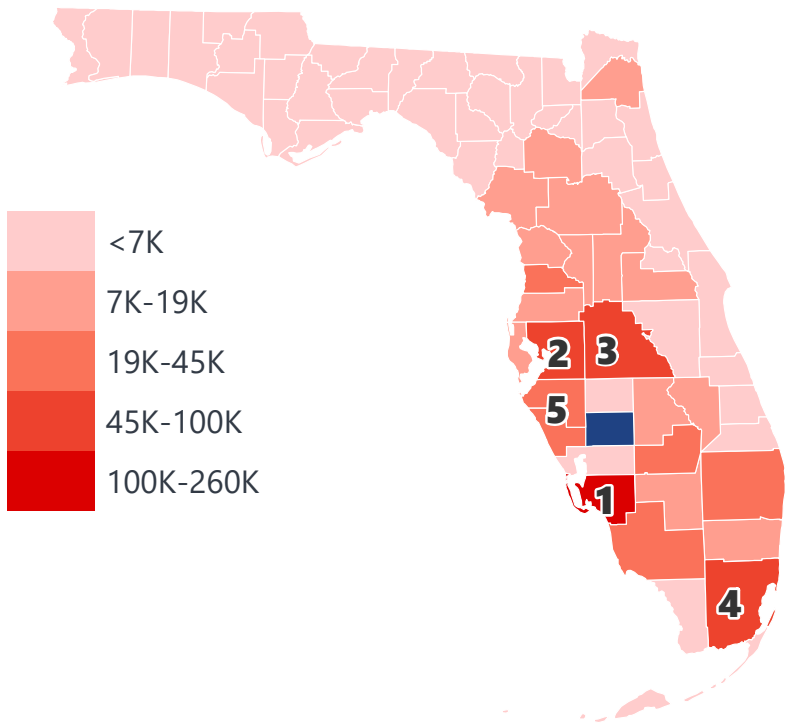
INTRASTATE EXPORTS (TONS)



DOMESTIC IMPORTS (TONS)



INTRASTATE IMPORTS (TONS)



## DOMESTIC EXPORTS (TONNAGE)

1	New York	25,162
2	Texas	19,652
3	Georgia	18,412
4	Pennsylvania	18,277
5	California	16,025

## INTRASTATE EXPORTS (TONNAGE)

1	Miami-Dade	41,465
2	Polk	35,958
3	Palm Beach	30,213
4	Hillsborough	29,823
5	Broward	28,493

## DOMESTIC IMPORTS (TONNAGE)

1	Georgia	17,494
2	Louisiana	12,973
3	Ohio	5,859
4	North Carolina	3,887
5	South Carolina	3,760

## INTRASTATE IMPORTS (TONNAGE)

1	Lee	259,901
2	Hillsborough	100,598
3	Polk	67,424
4	Miami-Dade	60,526
5	Manatee	44,792



# DESOTO COUNTY FREIGHT INFRASTRUCTURE



## LARGEST FREIGHT EMPLOYERS

1	Walmart	900-1K
2	Peace River Citrus	100-200
3	Swift Transportation	100-200
4	Winslow Marine Products	50-100
5	Crown Building	50-100

## MAJOR FREIGHT LAND USES

### 2.8 M SQ.FT Floor Area

70.94%	Warehousing and distribution centers
14.43%	Light manufacturing
8.81%	Fruit, vegetable and meat packing plants
3.31%	Heavy industrial
1.34%	Utilities

### 127.3 M SQ.FT LAND AREA

41.42%	Utilities
25.17%	Sewage disposal and waste land
19.58%	Warehousing and distribution centers
6.55%	Mining lands, petroleum lands, or gas lands
3.22%	Dairies, feed lots

Florida Department of Economic Opportunity, 2018  
Florida Department of Revenue, 2019

# MAJOR COUNTY COMMODITIES



## IMPORTS



### TOP COMMODITY by Tonnage, 2018 (relative to Florida)

FL Rank	Commodity	% Florida Share
16	Waste or Scrap Materials	1.64%
42	Nonmetallic Minerals	0.33%
46	Clay, Concrete, Glass, Stone	0.27%
36	Farm Products	0.22%
50	Lumber or Wood Products	0.18%

## EXPORTS



FL Rank	Commodity	% Florida Share
14	Farm Products	2.51%
28	Forest Products	0.82%
39	Lumber or Wood Products	0.75%
18	Rubber or Misc. Plastics	0.71%
27	Food or Kindred Products	0.42%

### TOP COMMODITY by Value, 2018 (relative to Florida)

FL Rank	Commodity	% Florida Share
16	Waste or Scrap Materials	1.67%
43	Nonmetallic Minerals	0.31%
41	Farm Products	0.24%
47	Clay, Concrete, Glass, Stone	0.19%
43	Warehouse, Distribution Center and Drayage Movements	0.13%

FL Rank	Commodity	% Florida Share
12	Farm Products	1.99%
27	Forest Products	0.81%
30	Clay, Concrete, Glass, Stone	0.66%
22	Food or Kindred Products	0.57%
25	Rubber or Misc. Plastics	0.34%





# TRANSPORTATION STATISTICS AND FREIGHT MOVEMENT BY MODE



**121 K** | Daily Truck Miles Traveled  
- Planning Time Index  
**515** | Public Roadway Mileage



**65 Miles** | Distance from closest seaport  
(Port of Manatee)



**12.48** | Class I Mainline Miles (CSX)  
- Class II Mainline Miles  
**15.42** | Class III Mainline Miles (SGLR)



**55 Miles** | Distance from closest major  
airport (Manatee-Sarasota  
International Airport)



# FLORIDA HIGHLIGHTS

**3rd most populous** US State

**\$1T Gross** Domestic Product

**4th Largest** US Economy and **17th Largest** Economy in World

Nation's **3rd largest** workforce

**1 in 5 U.S. exporters** are located in Florida

**\$153B** International Trade

**1.76M jobs supported** by Trade, Transportation and Utilities industry sector

**1.25M jobs supported** by Leisure and Hospitality industry sector

**131M** annual visitors

CAPITAL **TALLAHASSEE**

AREA (SQ. MILES) **53,624**

LARGEST CITY (SIZE) **JACKSONVILLE**

POPULATION (2019) **21,208,589**

ANNUAL POP GROWTH RATE (2010-2019) **1.4%**

EMPLOYMENT (2019) **8,884,065**

ANNUAL EMP GROWTH RATE (2010-2019) **2.8%**

*Bureau of Economic Business Research,  
Bureau of Labor Statistics*

## DOMESTIC IMPORTS

<b>1</b>	<b>GEORGIA</b>	\$44B
<b>2</b>	<b>CALIFORNIA</b>	\$29B
<b>3</b>	<b>TEXAS</b>	\$26B
<b>4</b>	<b>ALABAMA</b>	\$18B
<b>5</b>	<b>ILLINOIS</b>	\$18B

## DOMESTIC EXPORTS

<b>1</b>	<b>GEORGIA</b>	\$22B
<b>2</b>	<b>TEXAS</b>	\$19B
<b>3</b>	<b>CALIFORNIA</b>	\$15B
<b>4</b>	<b>NORTH CAROLINA</b>	\$12B
<b>5</b>	<b>NEW YORK</b>	\$10B

## INTERNATIONAL IMPORTS

<b>1</b>	<b>CHINA</b>	\$9.5B
<b>2</b>	<b>JAPAN</b>	\$6.5B
<b>3</b>	<b>BRAZIL</b>	\$6.4B
<b>4</b>	<b>MEXICO</b>	\$4.5B
<b>5</b>	<b>CHILE</b>	\$3.7B

## INTERNATIONAL EXPORTS

<b>1</b>	<b>BRAZIL</b>	\$13.4B
<b>2</b>	<b>COLOMBIA</b>	\$4.2B
<b>3</b>	<b>ARGENTINA</b>	\$3.6B
<b>4</b>	<b>DOMINICAN REPUBLIC</b>	\$3.1B
<b>5</b>	<b>CHILE</b>	\$3B

# TRANSPORTATION STATISTICS AND FREIGHT MOVEMENT BY MODE



**83%**  
TONNAGE

**71%**  
VALUE

**123,104** Public roadway mileage  
**12,130** State Highway System (SHS) mileage  
**30.7M** Daily truck miles traveled on SHS  
**98** Public truck parking facilities



**3.5%**  
TONNAGE

**2.9%**  
VALUE

**15** Deepwater seaports  
**4.1M** Twenty-foot equivalent units (TEUs)  
**16.8M** Annual cruise passengers



**6.7%**  
TONNAGE

**1.8%**  
VALUE

**2,936** Miles of roads  
**6.9M** Annual rail passenger traffic



**0.1%**  
TONNAGE

**5.4%**  
VALUE

**129** Public use airports  
**20** Commercial service airports  
**2** Active spaceports



**3.6%**  
TONNAGE

**1%**  
VALUE

**5,899** Miles of gas transmission and hazardous liquid pipelines



**3.1%**  
TONNAGE

**17.9%**  
VALUE

Includes shipments by multiple modes and by parcel delivery services, U.S. Postal Service, or couriers (capped at 150 pounds). This category is not limited to containerized or trailer-on-flatcar shipments.

# FLORIDA COMMODITY FLOWS (2018-2045)



IMPORTS



WITHIN FL



EXPORTS

	2018	2045	2018	2045	2018	2045
TONNAGE	142M	190M	656M	761M	57M	103M
VALUE	\$321B	\$690B	\$402B	\$844B	\$180B	\$606B

Freight Analysis Framework (FAF) 4.5.1.



**Rickey Fitzgerald**  
**Manager, Freight & Multimodal Operations**  
 Florida Department of Transportation  
 605 Suwannee Street, Tallahassee, FL 32399  
 Rickey.Fitzgerald@dot.state.fl.us  
 850.414.4702