

# FREIGHT AND LOGISTICS OVERVIEW

FEBRUARY 2021

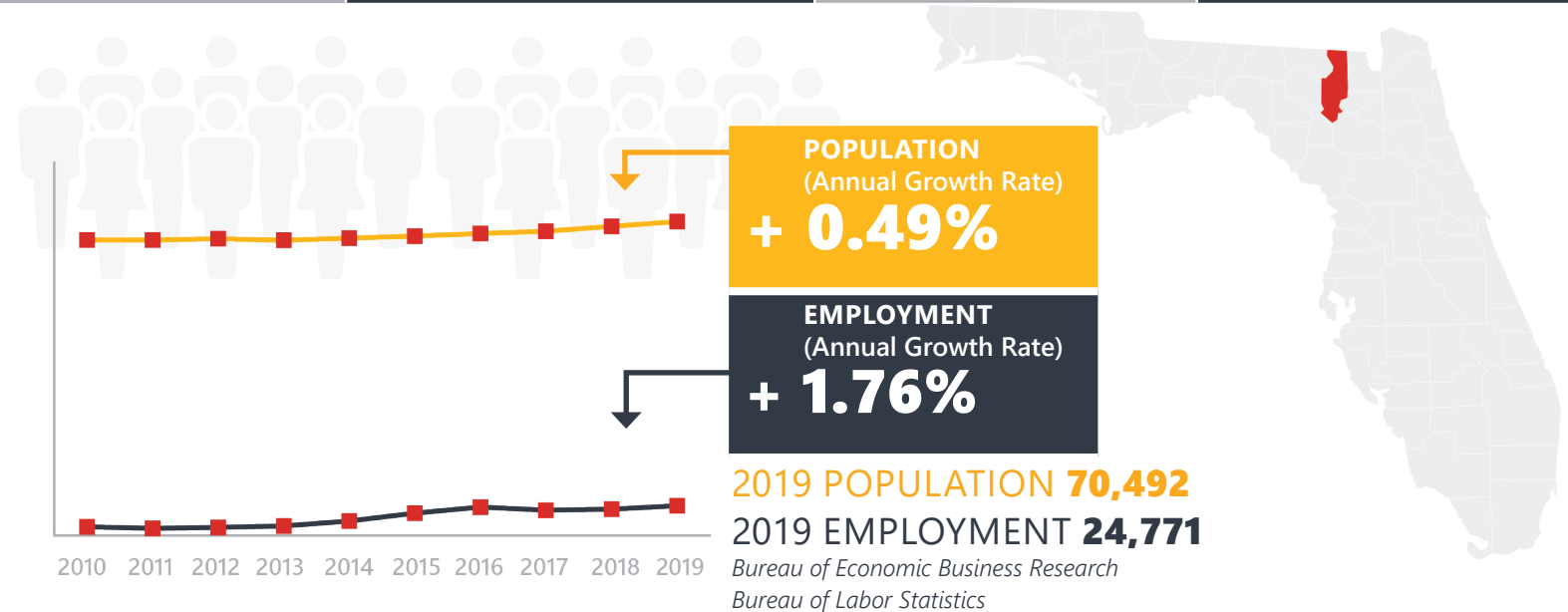
# COLUMBIA COUNTY



*Mission: The department will provide a safe transportation system that ensures the mobility of people and goods, enhances economic prosperity, and preserves the quality of our environment and communities.*

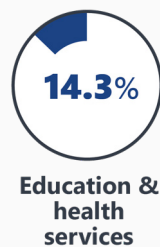
# COLUMBIA COUNTY HIGHLIGHTS

"FRESHWATER RECREATION CAPITAL OF AMERICA"		AREA (SQ . MILES)	801
COUNTY SEAT	LAKE CITY	LARGEST CITY (SIZE)	LAKE CITY



## LARGEST INDUSTRY SECTORS BY EMPLOYMENT (2019)

*Office of Economic and Demographic Research*



## FASTEST GROWING INDUSTRIES (2010-2019)

PROFESSIONAL AND BUSINESS SERVICES	JOBS ADDED	1,446
TRADE, TRANSPORTATION, AND UTILITIES		971
LEISURE AND HOSPITALITY		940
MANUFACTURING		698
EDUCATION AND HEALTH SERVICES		222

*Bureau of Labor Statistics*

## DID YOU KNOW?

Fred P. Cone Florida's 27th governor, was born and raised in Columbia County. Cone created the Florida Highway Patrol during his term.

Thanks to the intersection of I-75 and I-10, and the original highways U.S. 90 and U.S. 41, which have intersected here since 1927, Columbia County is known as the Gateway to Florida.

CSX Railroad operates a mainline along U.S. Highway 90 through Columbia County with Norfolk Southern nearby offering dual rail service.



# COMMODITY FLOW HIGHLIGHTS



## IMPORTS

## WITHIN COUNTY

## EXPORTS

	2018	2045	2018	2045	2018	2045
Tonnage:	3.22 M	4.94 M	98.1 K	171.3 K	2.55 M	4.01 M
Value:	\$ 0.87 B	\$ 1.15 B	\$ 12.4 M	\$ 18.2 M	\$ 0.85 B	\$ 1.06 B



### TOP COMMODITY by Tonnage, 2018

Nonmetallic Minerals	1,932,131
Clay, Concrete, Glass, Stone	299,635
Farm Products	206,246
Food or Kindred Products	185,571
Petroleum or Coal Products	171,382



Clay, Concrete, Glass, Stone	1,414,289
Lumber or Wood Products	293,625
Chemicals or Allied Products	277,344
Food or Kindred Products	211,252
Warehouse, Distribution Center and Drayage Movements	149,034



### TOP COMMODITY by Value, 2018

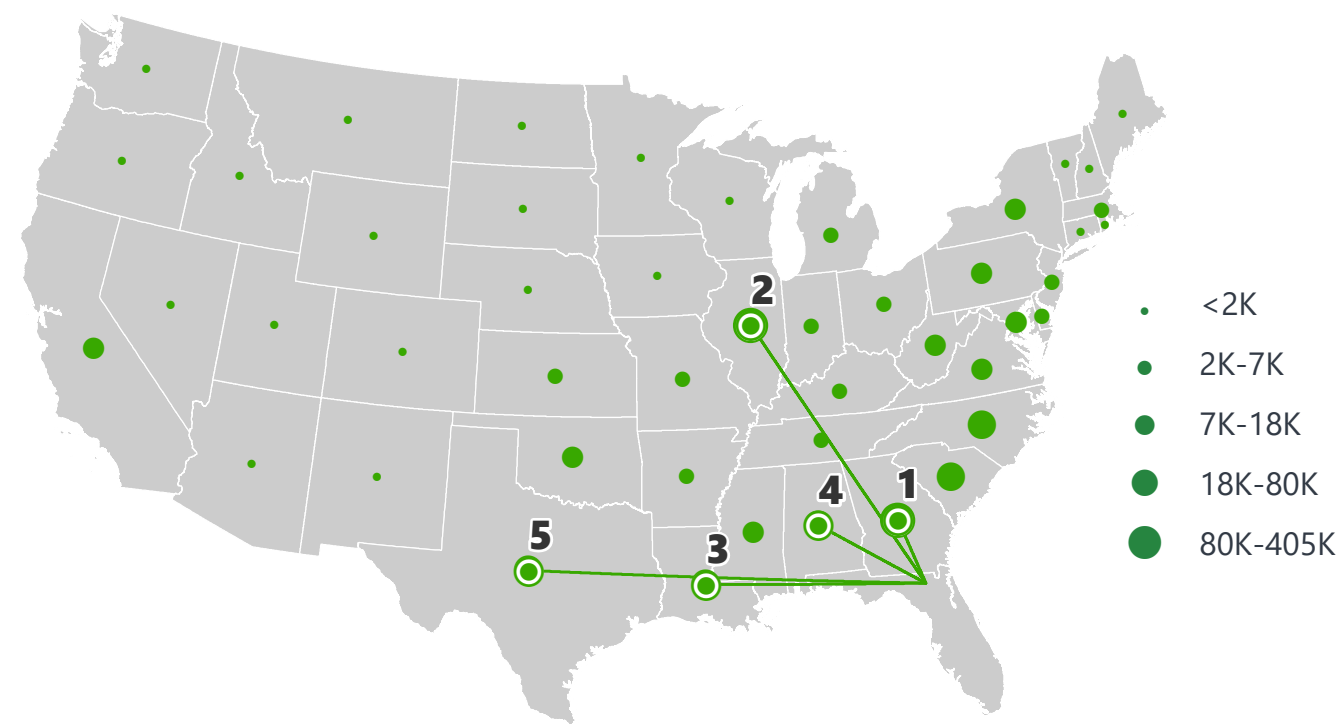
Warehouse, Distribution Center and Drayage Movements	\$ 176,141,635
Primary Metal Products	\$ 140,699,744
Petroleum or Coal Products	\$ 101,444,432
Chemicals or Allied Products	\$ 82,385,504
Food or Kindred Products	\$ 75,586,380



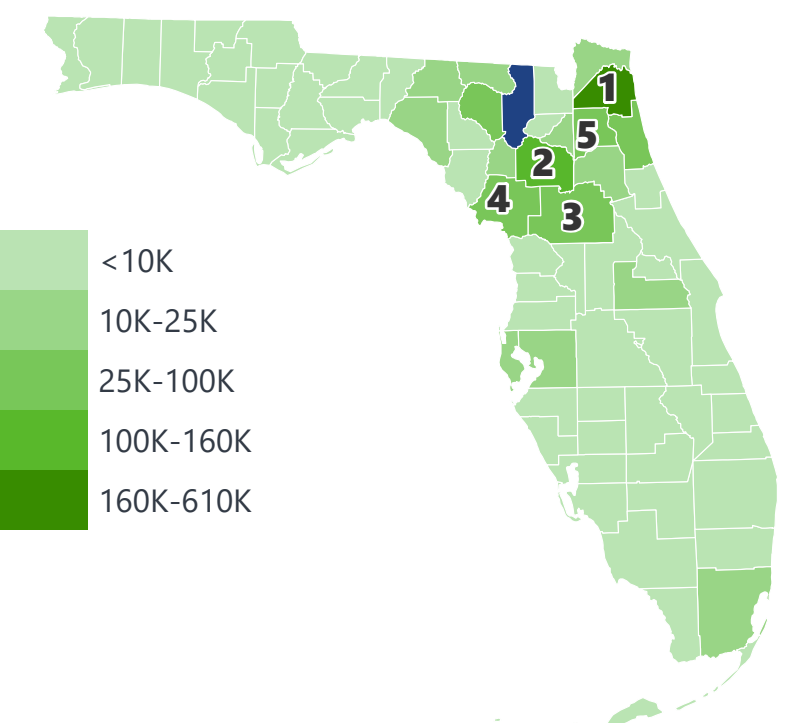
Warehouse, Distribution Center and Drayage Movements	\$ 256,796,379
Clay, Concrete, Glass, Stone	\$ 128,056,047
Fabricated Metal Products	\$ 123,781,074
Chemicals or Allied Products	\$ 90,340,483
Food or Kindred Products	\$ 72,662,507

# COLUMBIA COUNTY EXPORTS AND IMPORTS

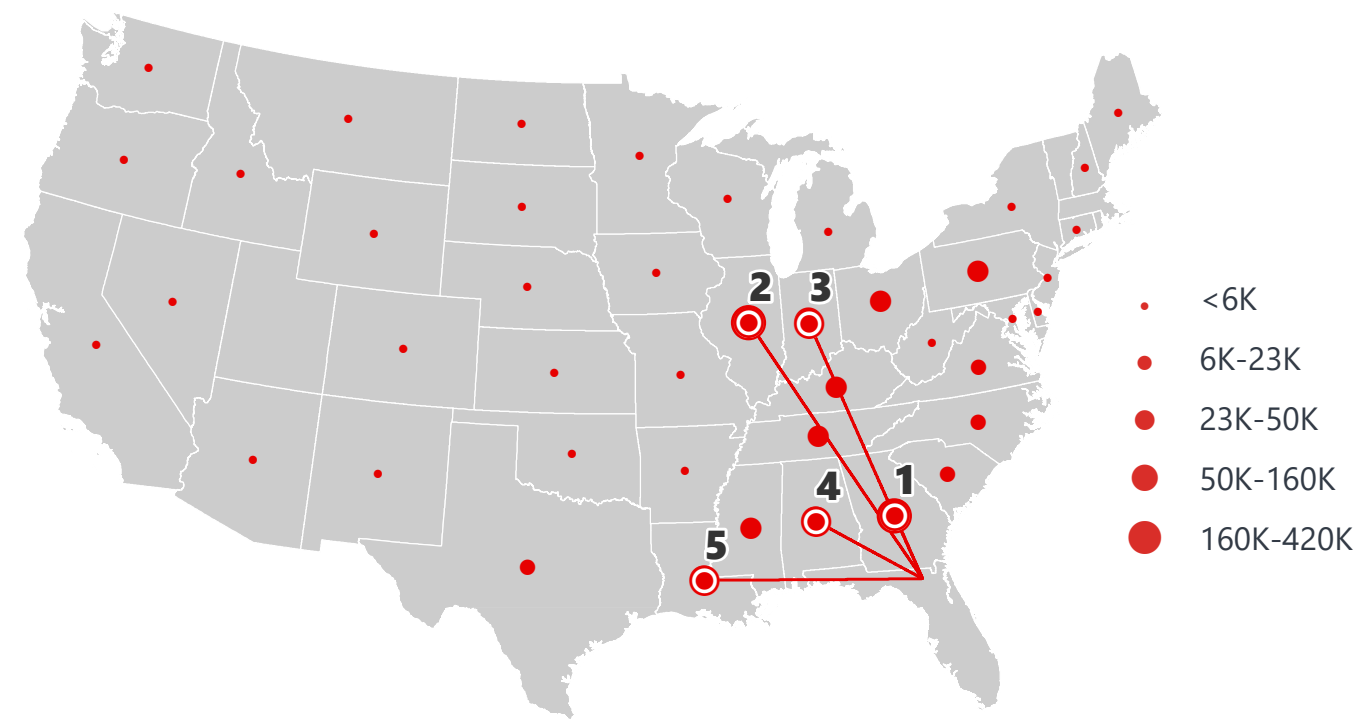
DOMESTIC EXPORTS (TONS)



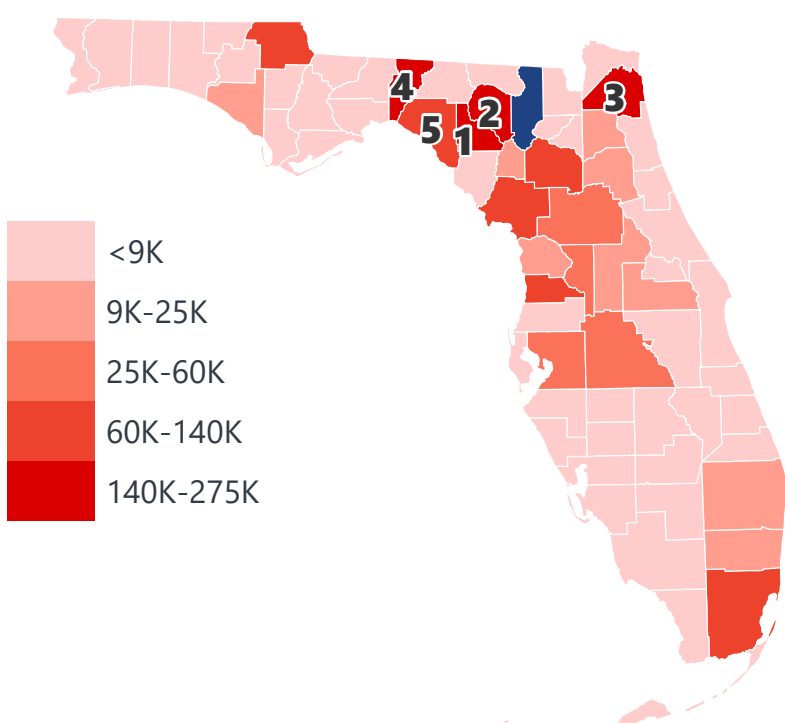
INTRASTATE EXPORTS (TONS)



DOMESTIC IMPORTS (TONS)



INTRASTATE IMPORTS (TONS)



## DOMESTIC EXPORTS (TONNAGE)

1	Georgia	400,275
2	Illinois	219,125
3	Louisiana	78,316
4	Alabama	73,058
5	Texas	56,381

## INTRASTATE EXPORTS (TONNAGE)

1	Duval	605,920
2	Alachua	158,098
3	Marion	99,967
4	Levy	68,099
5	Clay	64,263

## DOMESTIC IMPORTS (TONNAGE)

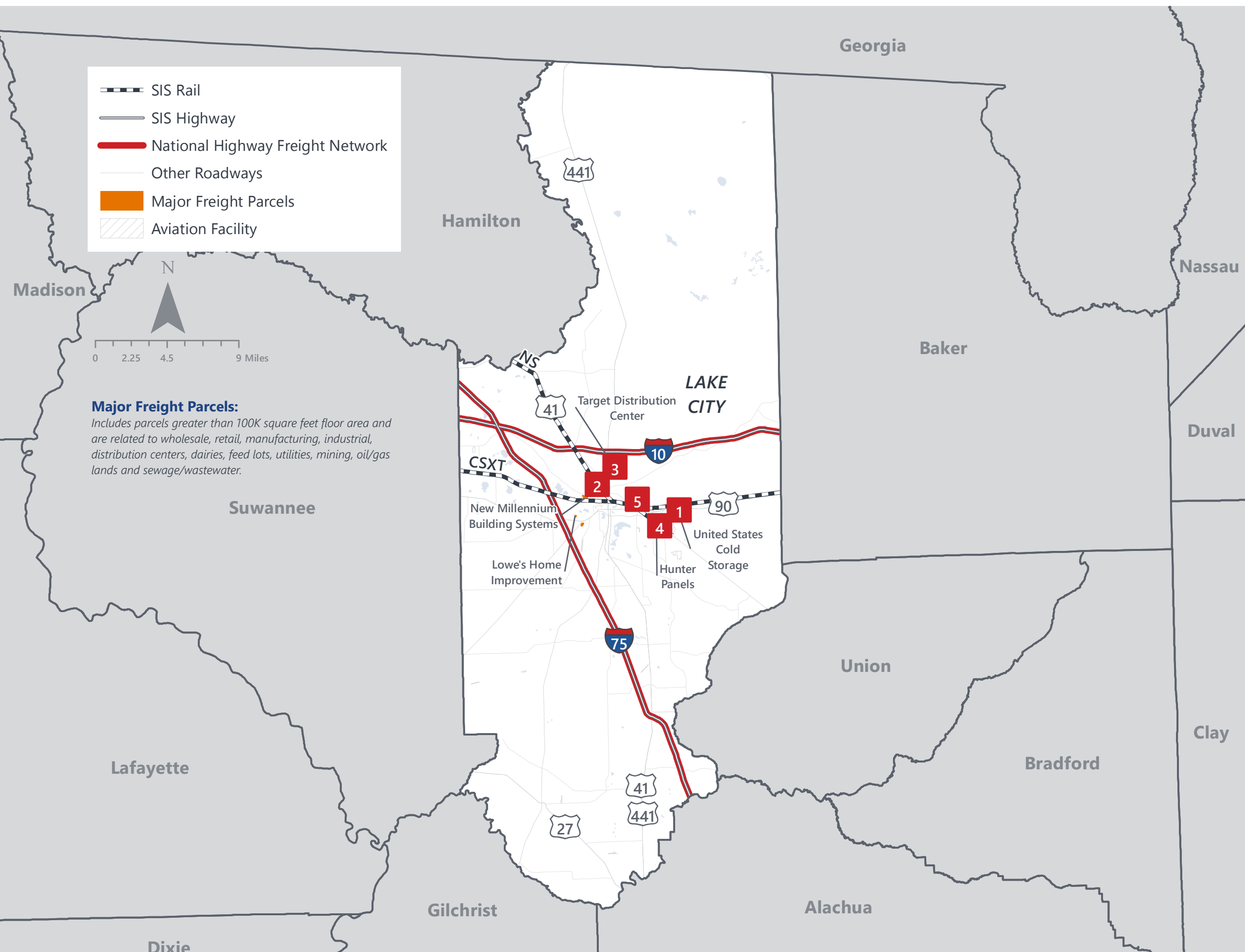
1	Georgia	417,830
2	Illinois	313,982
3	Indiana	161,397
4	Alabama	116,656
5	Louisiana	108,476

## INTRASTATE IMPORTS (TONNAGE)

1	Lafayette	274,436
2	Suwannee	231,271
3	Duval	173,557
4	Jefferson	173,346
5	Taylor	140,647



# COLUMBIA COUNTY FREIGHT INFRASTRUCTURE



## LARGEST FREIGHT EMPLOYERS

1	HAECO America	500-600
2	Anderson Columbia Co	300-400
3	Target	200-300
4	Champion Home Builders	200-300
5	New Millennium Building Systems	100-200

## MAJOR FREIGHT LAND USES

### 4.7 M SQ.FT Floor Area

47.68%	Warehousing and distribution centers
29.54%	Light manufacturing
10.47%	Wholesale outlets, produce houses, manufacturing outlets
6.30%	Lumber yards, sawmills, planing mills
3.04%	Heavy industrial

### 137.5 M SQ.FT LAND AREA

37.37%	Utilities
29.33%	Sewage disposal and waste land
12.64%	Warehousing and distribution centers
8.59%	Light manufacturing
4.04%	Heavy industrial

Florida Department of Economic Opportunity, 2018  
Florida Department of Revenue, 2019

# MAJOR COUNTY COMMODITIES



## IMPORTS



### TOP COMMODITY by Tonnage, 2018 (relative to Florida)

FL Rank	Commodity	% Florida Share
12	Primary Metal Products	3.07%
17	Nonmetallic Minerals	1.61%
13	Farm Products	1.38%
27	Food or Kindred Products	0.72%
31	Clay, Concrete, Glass, Stone	0.72%

## EXPORTS



FL Rank	Commodity	% Florida Share
9	Lumber or Wood Products	3.15%
11	Clay, Concrete, Glass, Stone	2.87%
14	Fabricated Metal Products	2.49%
9	Chemicals or Allied Products	2.04%
13	Rubber or Misc. Plastics	1.53%

### TOP COMMODITY by Value, 2018 (relative to Florida)

FL Rank	Commodity	% Florida Share
12	Primary Metal Products	2.10%
11	Nonmetallic Minerals	1.85%
30	Clay, Concrete, Glass, Stone	0.63%
28	Farm Products	0.61%
36	Forest Products	0.54%

FL Rank	Commodity	% Florida Share
13	Fabricated Metal Products	2.26%
17	Clay, Concrete, Glass, Stone	1.68%
16	Forest Products	1.30%
31	Lumber or Wood Products	1.01%
15	Rubber or Misc. Plastics	0.98%





# TRANSPORTATION STATISTICS AND FREIGHT MOVEMENT BY MODE



**614 K** | Daily Truck Miles Traveled  
**1.15** | Planning Time Index  
**1,541** | Public Roadway Mileage



**68 Miles** | Distance from closest seaport (JAXPORT)



**35.92** | Class I Mainline Miles (CSX, NS)  
- Class II Mainline Miles  
- Class III Mainline Miles



**48 Miles** | Distance from closest major airport (Gainesville Regional Airport)



# FLORIDA HIGHLIGHTS

**3rd most populous** US State

**\$1T Gross** Domestic Product

**4th Largest** US Economy and **17th Largest** Economy in World

Nation's **3rd largest** workforce

**1 in 5 U.S. exporters** are located in Florida

**\$153B** International Trade

**1.76M jobs supported** by Trade, Transportation and Utilities industry sector

**1.25M jobs supported** by Leisure and Hospitality industry sector

**131M** annual visitors

CAPITAL **TALLAHASSEE**

AREA  
(SQ. MILES) **53,624**

LARGEST  
CITY (SIZE) **JACKSONVILLE**

POPULATION  
(2019) **21,208,589**

ANNUAL POP  
GROWTH RATE  
(2010-2019) **1.4%**

EMPLOYMENT  
(2019) **8,884,065**

ANNUAL EMP  
GROWTH RATE  
(2010-2019) **2.8%**

*Bureau of Economic Business Research,  
Bureau of Labor Statistics*

## DOMESTIC IMPORTS

<b>1</b>	<b>GEORGIA</b>	\$44B
<b>2</b>	<b>CALIFORNIA</b>	\$29B
<b>3</b>	<b>TEXAS</b>	\$26B
<b>4</b>	<b>ALABAMA</b>	\$18B
<b>5</b>	<b>ILLINOIS</b>	\$18B

## DOMESTIC EXPORTS

<b>1</b>	<b>GEORGIA</b>	\$22B
<b>2</b>	<b>TEXAS</b>	\$19B
<b>3</b>	<b>CALIFORNIA</b>	\$15B
<b>4</b>	<b>NORTH CAROLINA</b>	\$12B
<b>5</b>	<b>NEW YORK</b>	\$10B

## INTERNATIONAL IMPORTS

<b>1</b>	<b>CHINA</b>	\$9.5B
<b>2</b>	<b>JAPAN</b>	\$6.5B
<b>3</b>	<b>BRAZIL</b>	\$6.4B
<b>4</b>	<b>MEXICO</b>	\$4.5B
<b>5</b>	<b>CHILE</b>	\$3.7B

## INTERNATIONAL EXPORTS

<b>1</b>	<b>BRAZIL</b>	\$13.4B
<b>2</b>	<b>COLOMBIA</b>	\$4.2B
<b>3</b>	<b>ARGENTINA</b>	\$3.6B
<b>4</b>	<b>DOMINICAN REPUBLIC</b>	\$3.1B
<b>5</b>	<b>CHILE</b>	\$3B

# TRANSPORTATION STATISTICS AND FREIGHT MOVEMENT BY MODE



**83%**  
TONNAGE

**71%**  
VALUE

**123,104** Public roadway mileage  
**12,130** State Highway System (SHS) mileage  
**30.7M** Daily truck miles traveled on SHS  
**98** Public truck parking facilities



**3.5%**  
TONNAGE

**2.9%**  
VALUE

**15** Deepwater seaports  
**4.1M** Twenty-foot equivalent units (TEUs)  
**16.8M** Annual cruise passengers



**6.7%**  
TONNAGE

**1.8%**  
VALUE

**2,936** Miles of roads  
**6.9M** Annual rail passenger traffic



**0.1%**  
TONNAGE

**5.4%**  
VALUE

**129** Public use airports  
**20** Commercial service airports  
**2** Active spaceports



**3.6%**  
TONNAGE

**1%**  
VALUE

**5,899** Miles of gas transmission and hazardous liquid pipelines



**3.1%**  
TONNAGE

**17.9%**  
VALUE

Includes shipments by multiple modes and by parcel delivery services, U.S. Postal Service, or couriers (capped at 150 pounds). This category is not limited to containerized or trailer-on-flatcar shipments.

# FLORIDA COMMODITY FLOWS (2018-2045)



IMPORTS



WITHIN FL



EXPORTS

	2018	2045	2018	2045	2018	2045
TONNAGE	142M	190M	656M	761M	57M	103M
VALUE	\$321B	\$690B	\$402B	\$844B	\$180B	\$606B

Freight Analysis Framework (FAF) 4.5.1.



**Rickey Fitzgerald**  
**Manager, Freight & Multimodal Operations**  
 Florida Department of Transportation  
 605 Suwannee Street, Tallahassee, FL 32399  
 Rickey.Fitzgerald@dot.state.fl.us  
 850.414.4702