

FREIGHT AND LOGISTICS OVERVIEW

FEBRUARY 2021

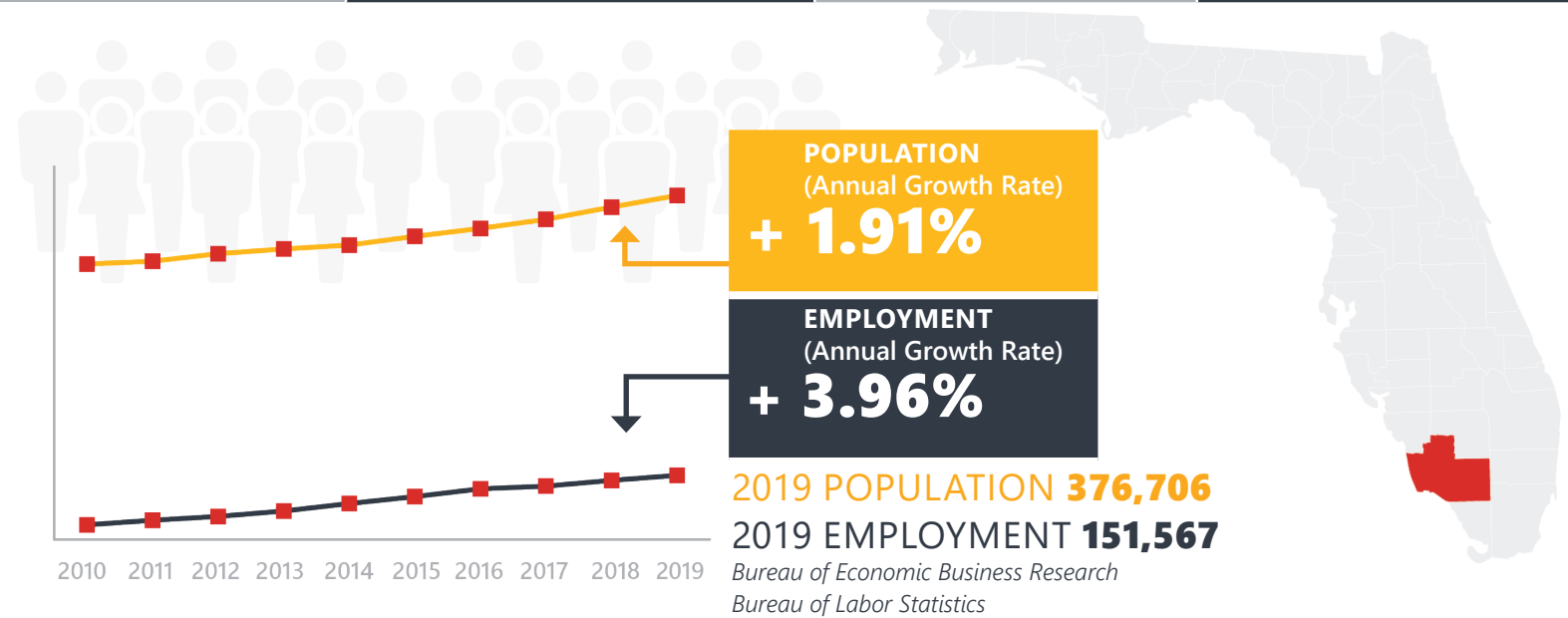
COLLIER COUNTY



Mission: The department will provide a safe transportation system that ensures the mobility of people and goods, enhances economic prosperity, and preserves the quality of our environment and communities.

COLLIER COUNTY HIGHLIGHTS

"GOLF CAPITAL OF THE WORLD"		AREA (SQ . MILES)	2,305
COUNTY SEAT	EAST NAPLES	LARGEST CITY (SIZE)	NAPLES

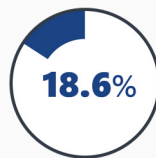


LARGEST INDUSTRY SECTORS BY EMPLOYMENT (2019)

Office of Economic and Demographic Research



Leisure & hospitality



Trade, transportation & utilities



Education & health services



Construction



Professional & business services

FASTEST GROWING INDUSTRIES (2010-2019)

LEISURE AND HOSPITALITY	JOBS ADDED	8,708
CONSTRUCTION		8,504
TRADE, TRANSPORTATION, AND UTILITIES		7,111
EDUCATION AND HEALTH SERVICES		5,873
PROFESSIONAL AND BUSINESS SERVICES		4,988

Bureau of Labor Statistics

DID YOU KNOW?

Collier County is the largest county (by land area) in the state of Florida.

Collier County is one of the top counties for vegetables, tomatoes, and watermelons harvested by acreage.

Immokalee Regional Airport is home to multiple businesses which include Turbo Services, a jet turbine engine test facility; and other manufacturing facilities.

COMMODITY FLOW HIGHLIGHTS



IMPORTS

WITHIN COUNTY

EXPORTS

	2018	2045	2018	2045	2018	2045
Tonnage:	6.56 M	11.98 M	0.29 M	0.56 M	2.43 M	3.75 M
Value:	\$ 6.02 B	\$ 12.38 B	\$ 0.17 B	\$ 0.34 B	\$ 1.67 B	\$ 2.79 B



TOP COMMODITY by Tonnage, 2018



Nonmetallic Minerals	2,167,750
Petroleum or Coal Products	1,196,055
Warehouse, Distribution Center and Drayage Movements	1,113,519
Food or Kindred Products	603,382
Clay, Concrete, Glass, Stone	529,252

Waste or Scrap Materials	766,312
Warehouse, Distribution Center and Drayage Movements	458,441
Clay, Concrete, Glass, Stone	348,201
Petroleum or Coal Products	346,824
Nonmetallic Minerals	185,040



TOP COMMODITY by Value, 2018

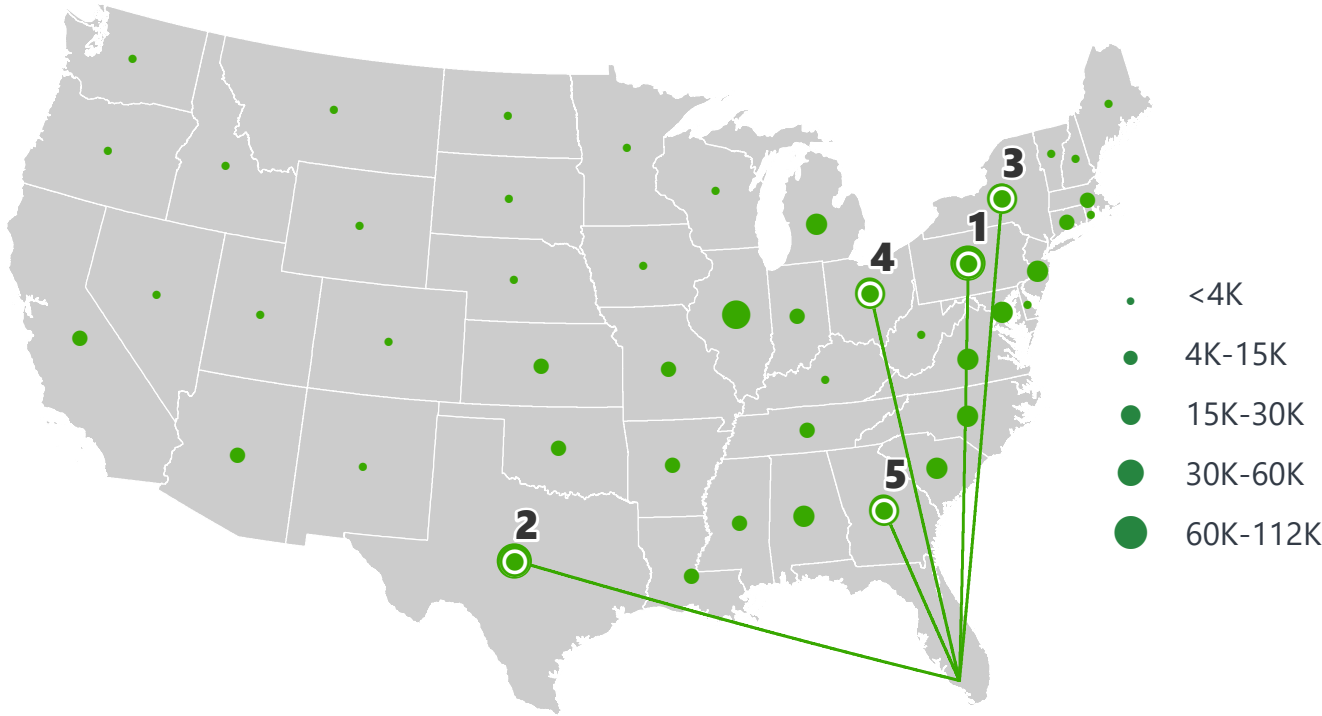


Warehouse, Distribution Center and Drayage Movements	\$ 1,364,794,602
Transportation Equipment	\$ 1,084,408,493
Food or Kindred Products	\$ 829,833,754
Petroleum or Coal Products	\$ 642,142,028
Chemicals or Allied Products	\$ 378,800,335

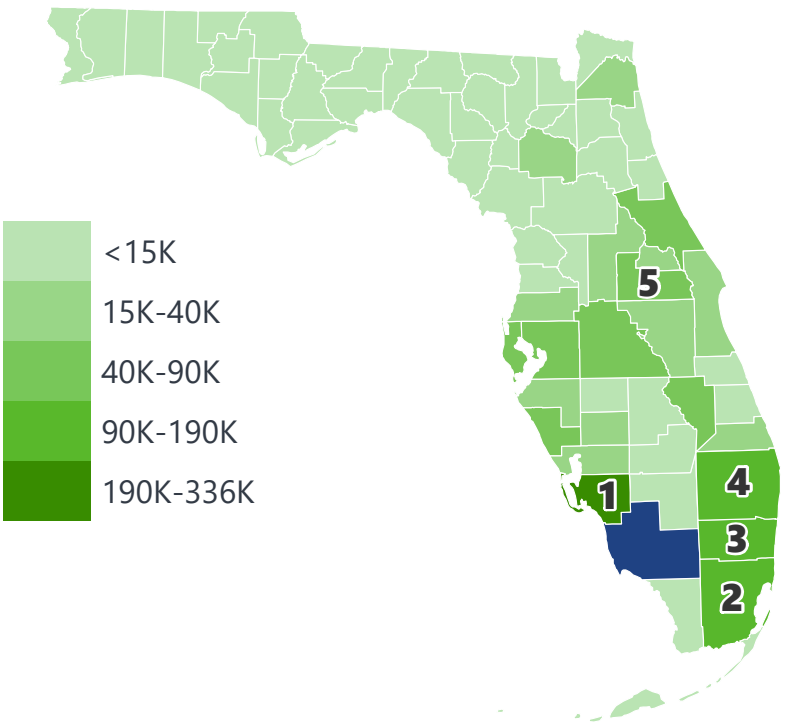
Warehouse, Distribution Center and Drayage Movements	\$ 561,894,298
Instruments, Photo and Optical Equipment	\$ 409,148,730
Waste or Scrap Materials	\$ 188,519,370
Farm Products	\$ 103,211,276
Lumber or Wood Products	\$ 59,508,490

COLLIER COUNTY EXPORTS AND IMPORTS

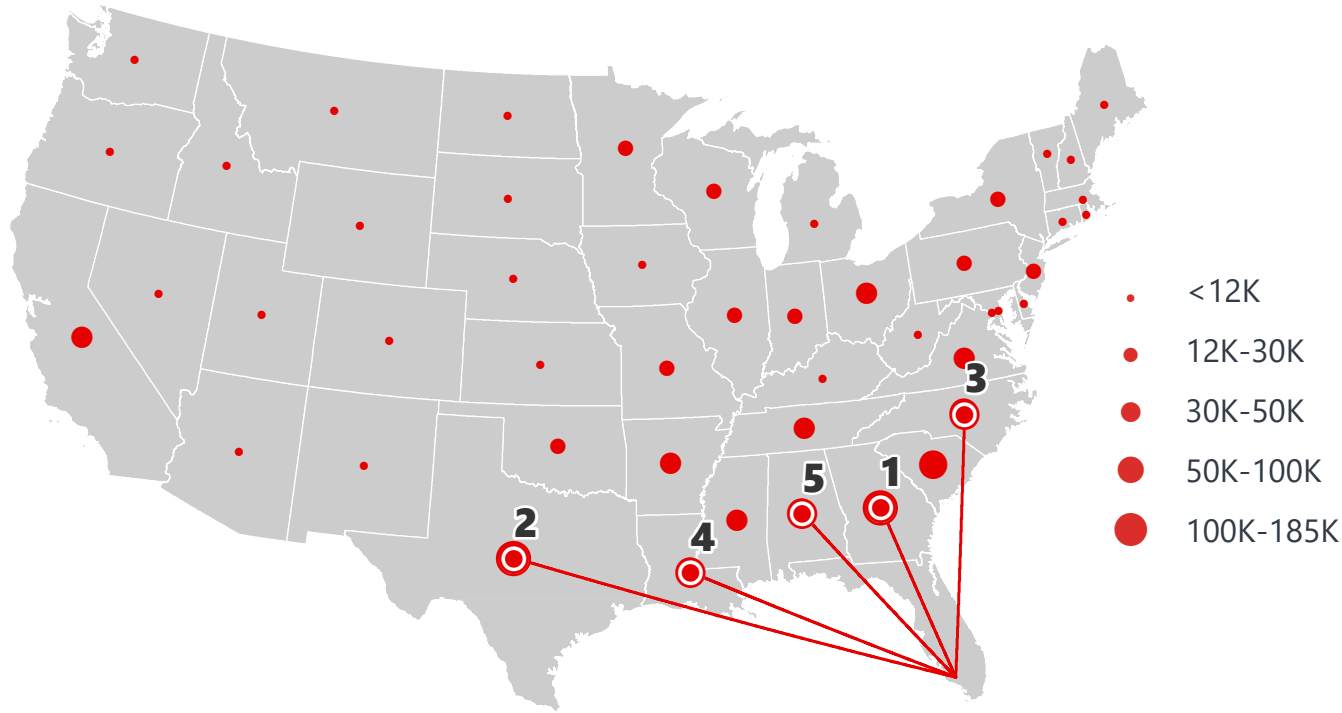
DOMESTIC EXPORTS (TONS)



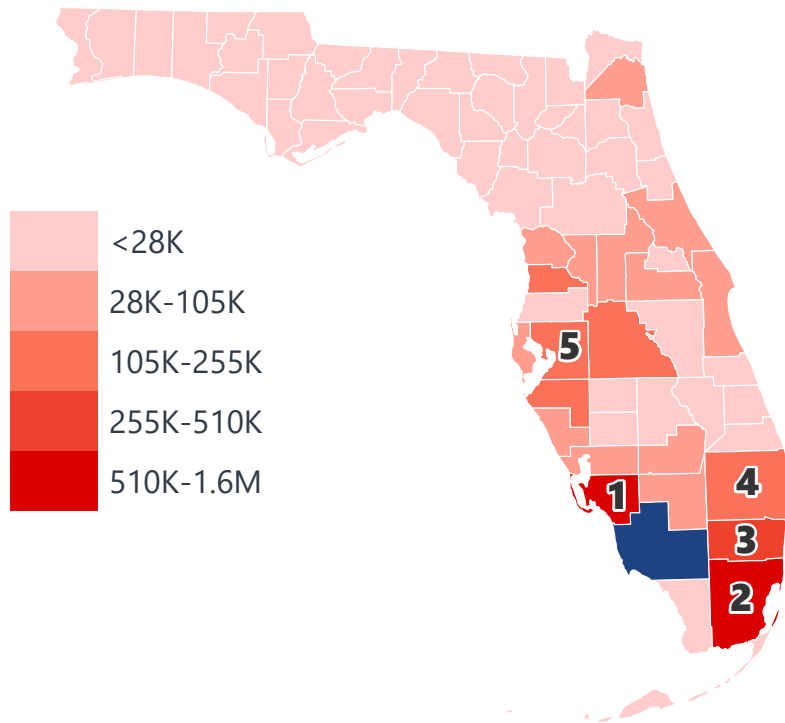
INTRASTATE EXPORTS (TONS)



DOMESTIC IMPORTS (TONS)



INTRASTATE IMPORTS (TONS)



DOMESTIC EXPORTS (TONNAGE)

1	Pennsylvania	111,780
2	Texas	84,789
3	New York	58,729
4	Ohio	49,059
5	Georgia	45,312

INTRASTATE EXPORTS (TONNAGE)

1	Lee	335,320
2	Miami-Dade	187,132
3	Broward	147,556
4	Palm Beach	115,148
5	Orange	91,581

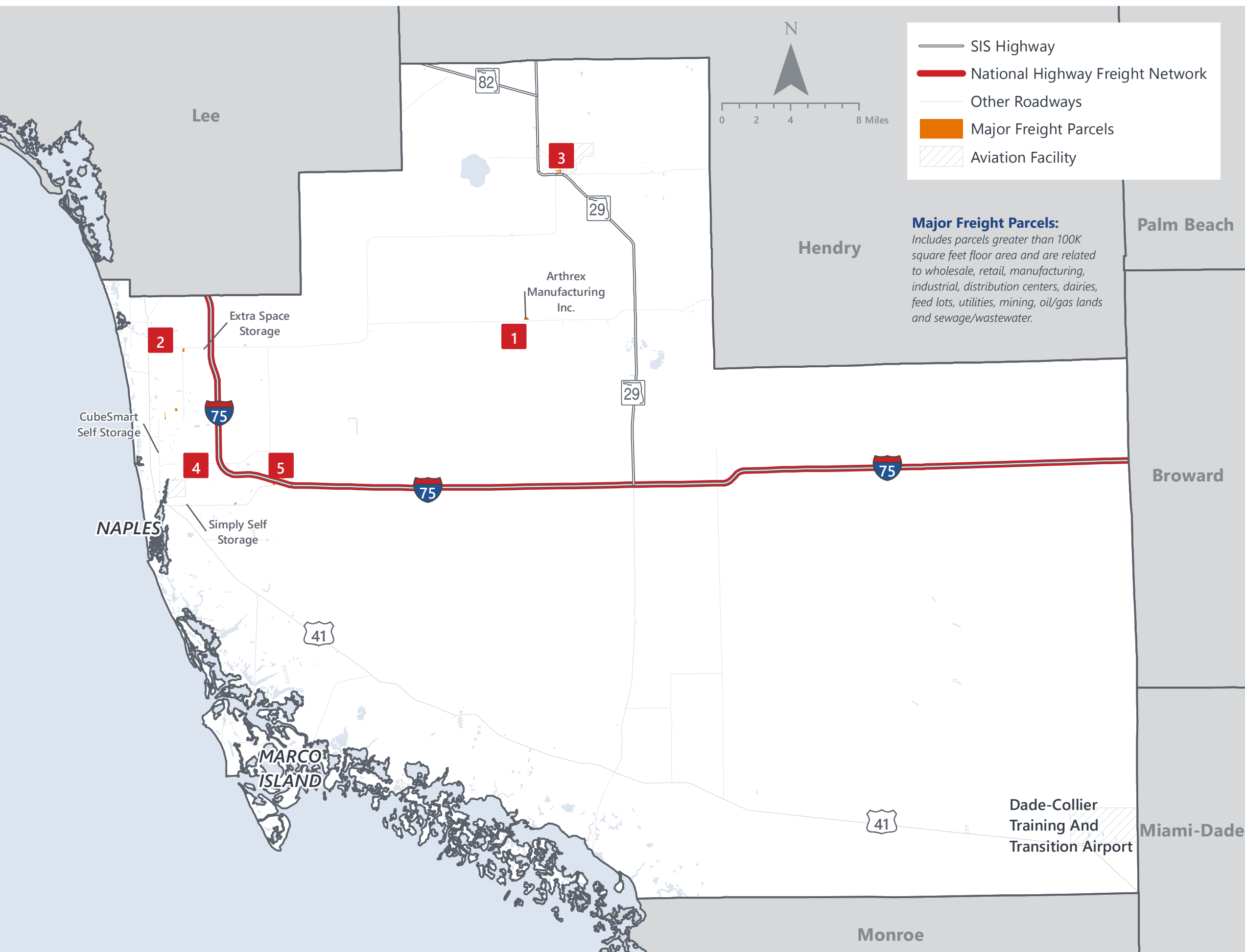
DOMESTIC IMPORTS (TONNAGE)

1	Georgia	180,826
2	Texas	158,674
3	North Carolina	101,748
4	Louisiana	93,442
5	Alabama	83,283

INTRASTATE IMPORTS (TONNAGE)

1	Lee	1,596,036
2	Miami-Dade	1,119,193
3	Broward	509,475
4	Palm Beach	255,095
5	Hillsborough	221,348

COLLIER COUNTY FREIGHT INFRASTRUCTURE



LARGEST FREIGHT EMPLOYERS

1	Arthrex Manufacturing, Inc.	1K-2K
2	Arthrex	1K-2K
3	LFC Management Services	200-300
4	UPS	200-300
5	Parker Hannifin	100-200

MAJOR FREIGHT LAND USES

17.2 M SQ.FT Floor Area

50.22%	Warehousing and distribution centers
22.23%	Light manufacturing
6.47%	Fruit, vegetable and meat packing plants
4.92%	Wholesale outlets, produce houses, manufacturing outlets
4.37%	Airports, bus terminals and marine terminals

510.5 M SQ.FT LAND AREA

65.80%	Sewage disposal and waste land
8.27%	Mining lands, petroleum lands, or gas lands
7.84%	Minerals processing and construction material plants
5.03%	Warehousing and distribution centers
4.72%	Utilities

Florida Department of Economic Opportunity, 2018
Florida Department of Revenue, 2019

MAJOR COUNTY COMMODITIES



IMPORTS



TOP COMMODITY by Tonnage, 2018 (relative to Florida)

FL Rank	Commodity	% Florida Share
10	Furniture or Fixtures	2.74%
11	Warehouse, Distribution Center and Drayage Movements	2.63%
11	Food or Kindred Products	2.35%
10	Tobacco Products	2.29%
10	Leather or Leather Products	2.14%

EXPORTS



FL Rank	Commodity	% Florida Share
2	Instruments, Photo and Optical Equipment	12.32%
11	Waste or Scrap Materials	2.88%
11	Marine Products	1.35%
18	Warehouse, Distribution Center and Drayage Movements	1.31%
23	Farm Products	1.17%

TOP COMMODITY by Value, 2018 (relative to Florida)

FL Rank	Commodity	% Florida Share
10	Furniture or Fixtures	2.54%
11	Food or Kindred Products	2.19%
10	Tobacco Products	2.11%
12	Farm Products	2.10%
10	Leather or Leather Products	2.07%

FL Rank	Commodity	% Florida Share
6	Instruments, Photo and Optical Equipment	3.83%
11	Waste or Scrap Materials	2.82%
10	Marine Products	1.64%
26	Lumber or Wood Products	1.19%
21	Farm Products	1.16%



TRANSPORTATION STATISTICS AND FREIGHT MOVEMENT BY MODE



377 K | Daily Truck Miles Traveled
1.25 | Planning Time Index
1,655 | Public Roadway Mileage



108 Miles | Distance from closest seaport
(Port Everglades)



- | Class I Mainline Miles
- | Class II Mainline Miles
1.47 | Class III Mainline Miles (SGLR)



33 Miles | Distance from closest major
airport (Southwest Florida
International Airport)

FLORIDA HIGHLIGHTS

3rd most populous US State

\$1T Gross Domestic Product

4th Largest US Economy and **17th Largest** Economy in World

Nation's **3rd largest** workforce

1 in 5 U.S. exporters are located in Florida

\$153B International Trade

1.76M jobs supported by Trade, Transportation and Utilities industry sector

1.25M jobs supported by Leisure and Hospitality industry sector

131M annual visitors

CAPITAL **TALLAHASSEE**

AREA (SQ. MILES) **53,624**

LARGEST CITY (SIZE) **JACKSONVILLE**

POPULATION (2019) **21,208,589**

ANNUAL POP GROWTH RATE (2010-2019) **1.4%**

EMPLOYMENT (2019) **8,884,065**

ANNUAL EMP GROWTH RATE (2010-2019) **2.8%**

*Bureau of Economic Business Research,
Bureau of Labor Statistics*

DOMESTIC IMPORTS

1	GEORGIA	\$44B
2	CALIFORNIA	\$29B
3	TEXAS	\$26B
4	ALABAMA	\$18B
5	ILLINOIS	\$18B

DOMESTIC EXPORTS

1	GEORGIA	\$22B
2	TEXAS	\$19B
3	CALIFORNIA	\$15B
4	NORTH CAROLINA	\$12B
5	NEW YORK	\$10B

INTERNATIONAL IMPORTS

1	CHINA	\$9.5B
2	JAPAN	\$6.5B
3	BRAZIL	\$6.4B
4	MEXICO	\$4.5B
5	CHILE	\$3.7B

INTERNATIONAL EXPORTS

1	BRAZIL	\$13.4B
2	COLOMBIA	\$4.2B
3	ARGENTINA	\$3.6B
4	DOMINICAN REPUBLIC	\$3.1B
5	CHILE	\$3B

TRANSPORTATION STATISTICS AND FREIGHT MOVEMENT BY MODE



83%
TONNAGE

71%
VALUE

123,104 Public roadway mileage
12,130 State Highway System (SHS) mileage
30.7M Daily truck miles traveled on SHS
98 Public truck parking facilities



3.5%
TONNAGE

2.9%
VALUE

15 Deepwater seaports
4.1M Twenty-foot equivalent units (TEUs)
16.8M Annual cruise passengers



6.7%
TONNAGE

1.8%
VALUE

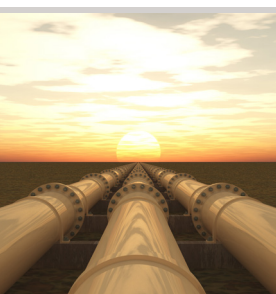
2,936 Miles of roads
6.9M Annual rail passenger traffic



0.1%
TONNAGE

5.4%
VALUE

129 Public use airports
20 Commercial service airports
2 Active spaceports



3.6%
TONNAGE

1%
VALUE

5,899 Miles of gas transmission and hazardous liquid pipelines



3.1%
TONNAGE

17.9%
VALUE

Includes shipments by multiple modes and by parcel delivery services, U.S. Postal Service, or couriers (capped at 150 pounds). This category is not limited to containerized or trailer-on-flatcar shipments.

FLORIDA COMMODITY FLOWS (2018-2045)



IMPORTS



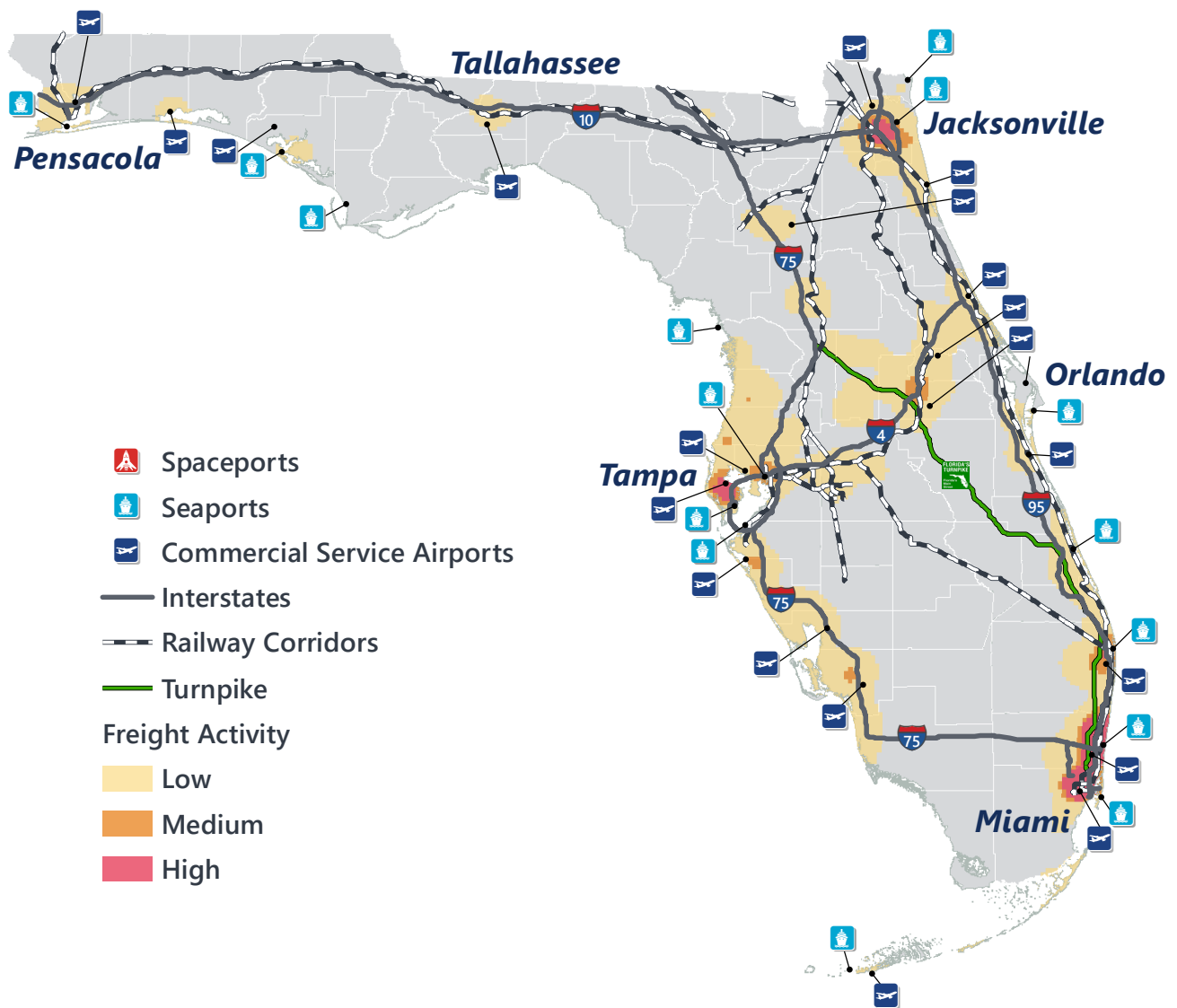
WITHIN FL



EXPORTS

	2018	2045	2018	2045	2018	2045
TONNAGE	142M	190M	656M	761M	57M	103M
VALUE	\$321B	\$690B	\$402B	\$844B	\$180B	\$606B

Freight Analysis Framework (FAF) 4.5.1.



Rickey Fitzgerald
Manager, Freight & Multimodal Operations
 Florida Department of Transportation
 605 Suwannee Street, Tallahassee, FL 32399
 Rickey.Fitzgerald@dot.state.fl.us
 850.414.4702