

FREIGHT AND LOGISTICS OVERVIEW

FEBRUARY 2021

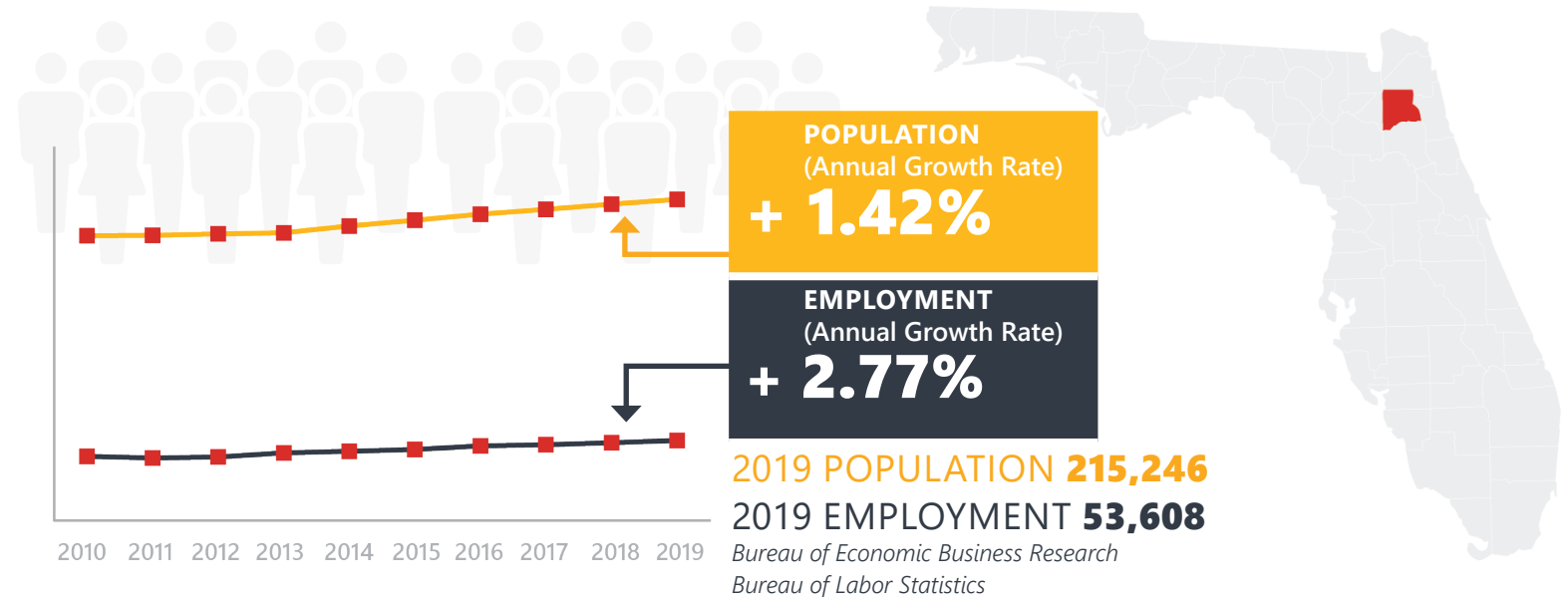
CLAY COUNTY



Mission: The department will provide a safe transportation system that ensures the mobility of people and goods, enhances economic prosperity, and preserves the quality of our environment and communities.

CLAY COUNTY HIGHLIGHTS

"SMALL TOWNS. BIG PASSIONS"		AREA (SQ . MILES)	644
COUNTY SEAT	GREEN COVE SPRINGS	LARGEST CITY (SIZE)	ORANGE PARK

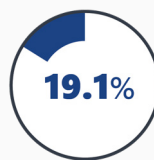


LARGEST INDUSTRY SECTORS BY EMPLOYMENT (2019)

Office of Economic and Demographic Research



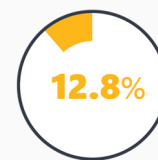
Trade,
transportation
& utilities



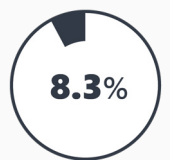
Education &
health
services



Leisure &
hospitality



Professional &
business
services



Construction

FASTEST GROWING INDUSTRIES (2010-2019)

PROFESSIONAL AND BUSINESS SERVICES	JOBS ADDED	3,419
EDUCATION AND HEALTH SERVICES		2,778
LEISURE AND HOSPITALITY		1,847
CONSTRUCTION		1,660
MANUFACTURING		565

Bureau of Labor Statistics

DID YOU KNOW?

Clay County's entire eastern border is nestled along the banks of the scenic St. Johns River and offers the enjoyment of boating, fishing, canoeing, or kayaking on 46 miles of lakes and rivers.

Founded 150 years ago, Clay County has developed into a diverse mixture of suburban and rural areas and is a haven for those who love nature and the outdoors. The county is home to some of the region's best golf courses, public parks, and 164 miles of walking and cycling trails.

The county is home to year round special events including the annual Northeast Florida Scottish Games & Festival, the Blue Ribbon Clay County Agricultural Fair and much more.

COMMODITY FLOW HIGHLIGHTS



IMPORTS

WITHIN COUNTY

EXPORTS

	2018	2045	2018	2045	2018	2045
Tonnage:	2.1 M	3.72 M	101.71 K	151.26 K	1.36 M	1.85 M
Value:	\$ 1.54 B	\$ 3.18 B	\$ 13.27 M	\$ 19.78 M	\$ 0.51 B	\$ 0.68 B



TOP COMMODITY by Tonnage, 2018

Nonmetallic Minerals	605,492
Warehouse, Distribution Center and Drayage Movements	356,731
Petroleum or Coal Products	346,699
Clay, Concrete, Glass, Stone	326,102
Food or Kindred Products	142,263



Clay, Concrete, Glass, Stone	538,214
Nonmetallic Minerals	348,817
Waste or Scrap Materials	177,526
Lumber or Wood Products	126,273
Petroleum or Coal Products	52,481



TOP COMMODITY by Value, 2018

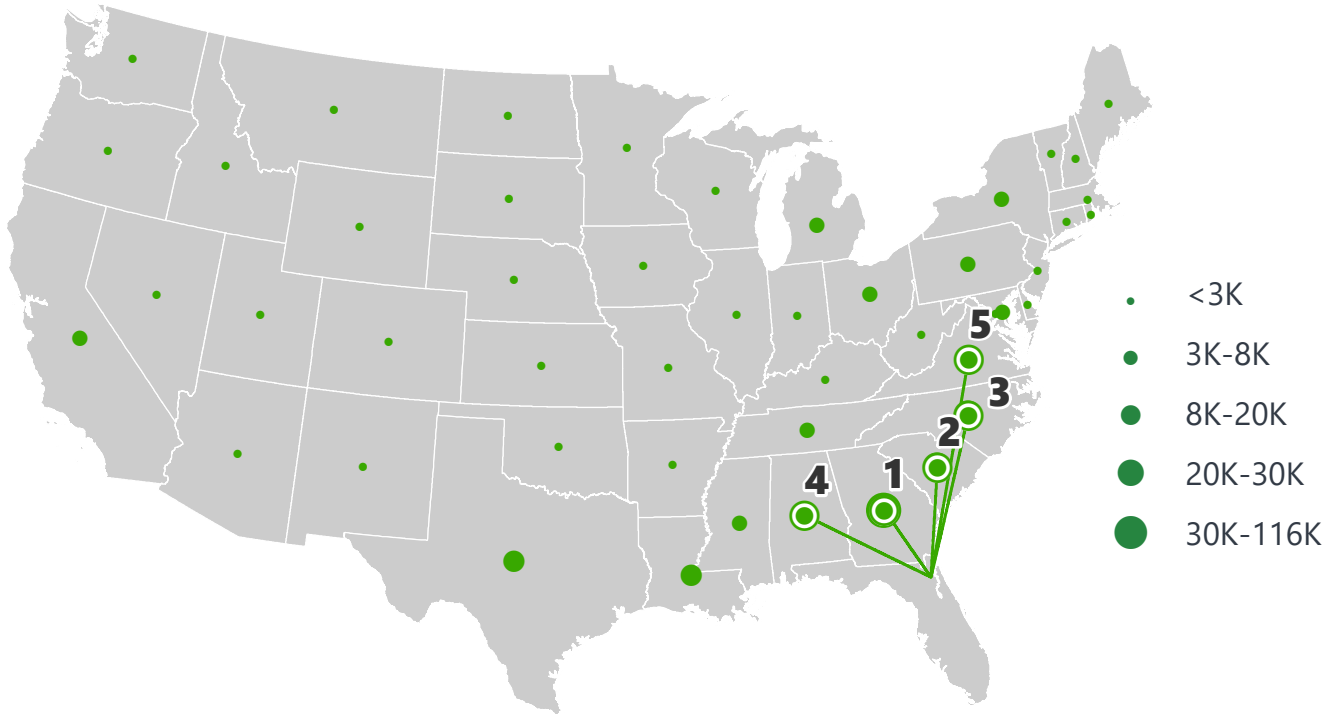
Warehouse, Distribution Center and Drayage Movements	\$ 612,361,889
Petroleum or Coal Products	\$ 188,221,351
Transportation Equipment	\$ 178,284,001
Food or Kindred Products	\$ 161,864,671
Clay, Concrete, Glass, Stone	\$ 47,133,296



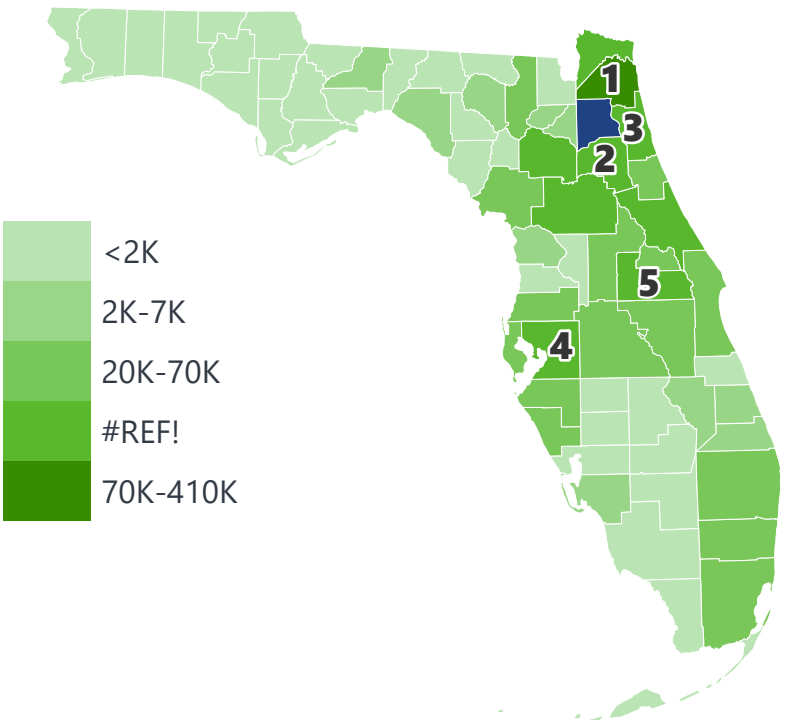
Warehouse, Distribution Center and Drayage Movements	\$ 152,008,928
Primary Metal Products	\$ 93,546,724
Lumber or Wood Products	\$ 63,841,057
Clay, Concrete, Glass, Stone	\$ 54,995,256
Waste or Scrap Materials	\$ 44,331,353

CLAY COUNTY EXPORTS AND IMPORTS

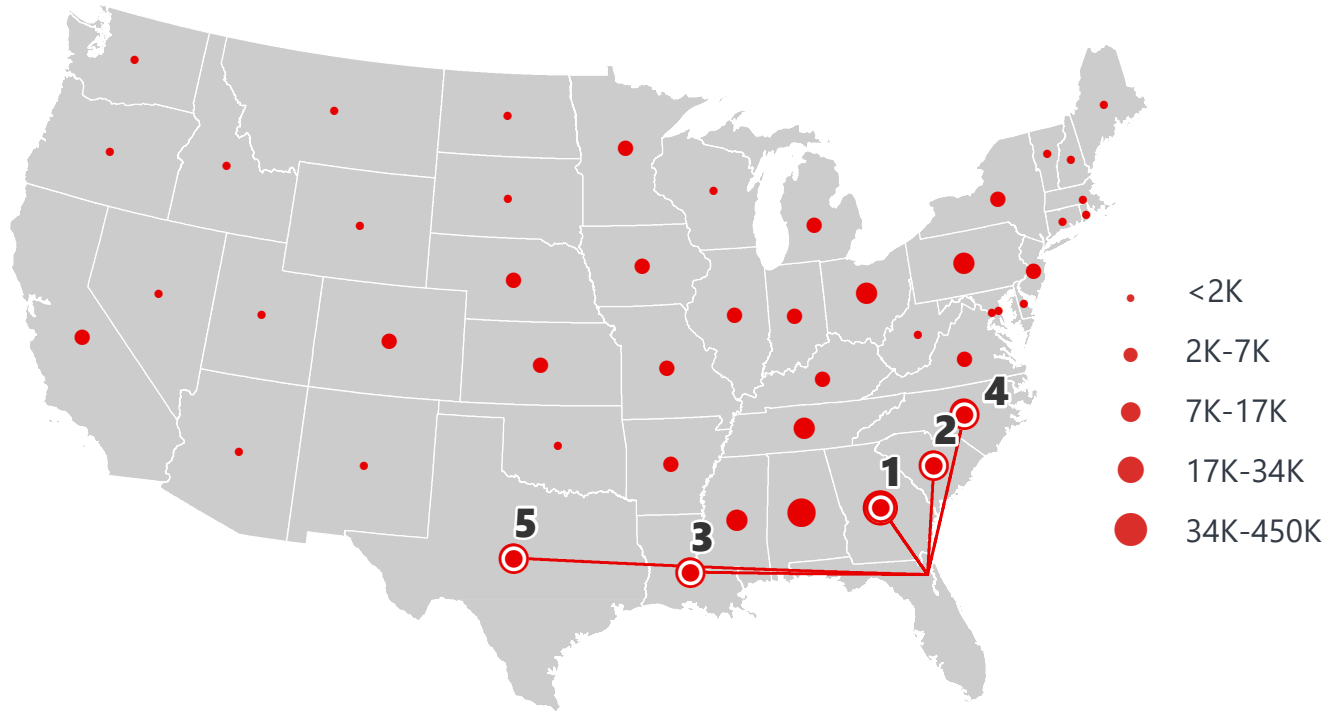
DOMESTIC EXPORTS (TONS)



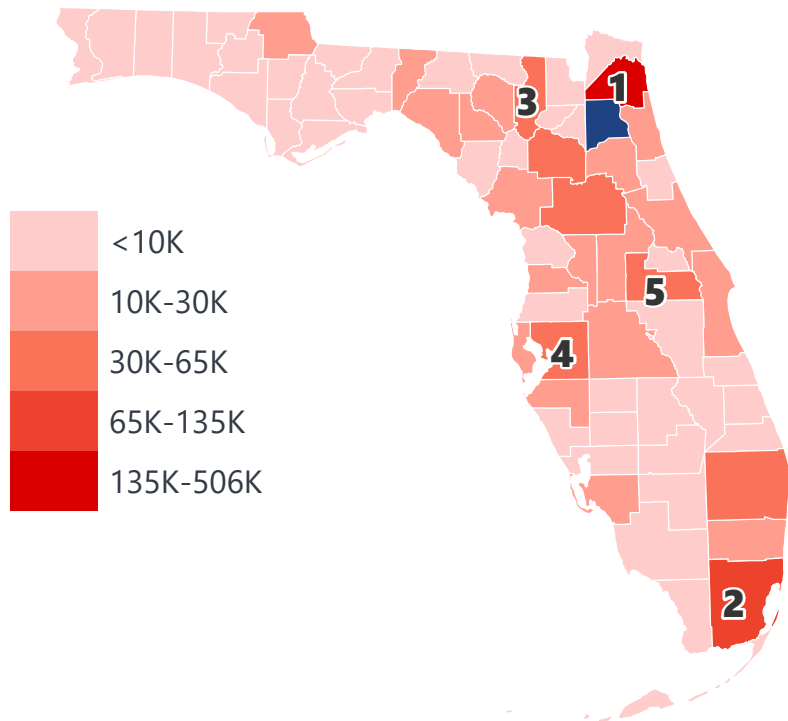
INTRASTATE EXPORTS (TONS)



DOMESTIC IMPORTS (TONS)



INTRASTATE IMPORTS (TONS)



DOMESTIC EXPORTS (TONNAGE)

1	Georgia	115,676
2	South Carolina	31,053
3	North Carolina	30,666
4	Alabama	20,668
5	Virginia	12,339

INTRASTATE EXPORTS (TONNAGE)

1	Duval	408,015
2	Putnam	68,141
3	St. Johns	51,509
4	Hillsborough	49,550
5	Orange	48,847

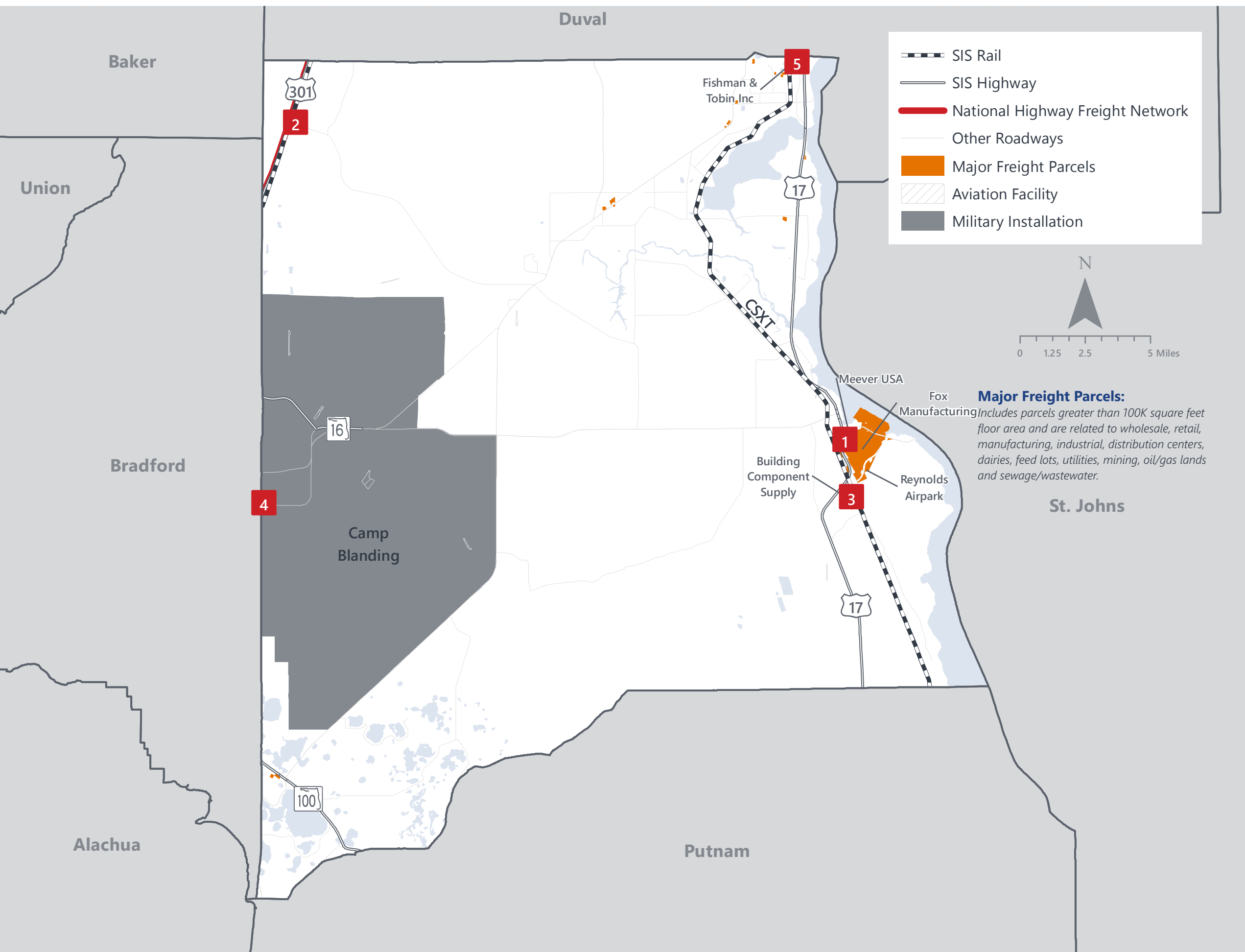
DOMESTIC IMPORTS (TONNAGE)

1	Georgia	448,294
2	South Carolina	33,684
3	Louisiana	27,420
4	North Carolina	23,522
5	Texas	23,024

INTRASTATE IMPORTS (TONNAGE)

1	Duval	505,639
2	Miami-Dade	136,528
3	Columbia	64,263
4	Hillsborough	53,215
5	Orange	45,022

CLAY COUNTY FREIGHT INFRASTRUCTURE



LARGEST FREIGHT EMPLOYERS

1	VAC Con	200-300
2	Gilman Building	100-200
3	BCS	100-200
4	The Chemours Company	100-200
5	TRF Holdings	50-100

MAJOR FREIGHT LAND USES

9.1 M SQ.FT Floor Area

54.41%	Warehousing and distribution centers
37.95%	Light manufacturing
4.66%	Utilities
1.66%	Lumber yards, sawmills, planing mills
0.60%	Other food processing

882.1 M SQ.FT LAND AREA

63.70%	Sewage disposal and waste land
13.26%	Dairies, feed lots
10.17%	Utilities
9.12%	Light manufacturing
2.80%	Warehousing and distribution centers

Florida Department of Economic Opportunity, 2018
Florida Department of Revenue, 2019

MAJOR COUNTY COMMODITIES



IMPORTS



TOP COMMODITY by Tonnage, 2018 (relative to Florida)

FL Rank	Commodity	% Florida Share
17	Forest Products	1.71%
16	Tobacco Products	1.23%
20	Leather or Leather Products	0.87%
28	Warehouse, Distribution Center and Drayage Movements	0.84%
30	Lumber or Wood Products	0.84%

EXPORTS



FL Rank	Commodity	% Florida Share
6	Primary Metal Products	3.41%
23	Lumber or Wood Products	1.36%
26	Clay, Concrete, Glass, Stone	1.09%
31	Waste or Scrap Materials	0.67%
24	Machinery	0.54%

TOP COMMODITY by Value, 2018 (relative to Florida)

FL Rank	Commodity	% Florida Share
17	Forest Products	1.71%
15	Tobacco Products	1.40%
18	Leather or Leather Products	0.95%
24	Warehouse, Distribution Center and Drayage Movements	0.78%
28	Clay, Concrete, Glass, Stone	0.64%

FL Rank	Commodity	% Florida Share
9	Primary Metal Products	2.26%
24	Lumber or Wood Products	1.27%
29	Clay, Concrete, Glass, Stone	0.72%
31	Waste or Scrap Materials	0.66%
22	Machinery	0.39%



TRANSPORTATION STATISTICS AND FREIGHT MOVEMENT BY MODE



147 K | Daily Truck Miles Traveled
- Planning Time Index
1,241 | Public Roadway Mileage



31 Miles | Distance from closest seaport (JAXPORT)



34.73 | Class I Mainline Miles (CSX)
- Class II Mainline Miles
- Class III Mainline Miles



42 Miles | Distance from closest major airport (Jacksonville International Airport)

FLORIDA HIGHLIGHTS

3rd most populous US State

\$1T Gross Domestic Product

4th Largest US Economy and **17th Largest** Economy in World

Nation's **3rd largest** workforce

1 in 5 U.S. exporters are located in Florida

\$153B International Trade

1.76M jobs supported by Trade, Transportation and Utilities industry sector

1.25M jobs supported by Leisure and Hospitality industry sector

131M annual visitors

CAPITAL **TALLAHASSEE**

AREA
(SQ. MILES) **53,624**

LARGEST
CITY (SIZE) **JACKSONVILLE**

POPULATION
(2019) **21,208,589**

ANNUAL POP
GROWTH RATE
(2010-2019) **1.4%**

EMPLOYMENT
(2019) **8,884,065**

ANNUAL EMP
GROWTH RATE
(2010-2019) **2.8%**

*Bureau of Economic Business Research,
Bureau of Labor Statistics*

DOMESTIC IMPORTS

1	GEORGIA	\$44B
2	CALIFORNIA	\$29B
3	TEXAS	\$26B
4	ALABAMA	\$18B
5	ILLINOIS	\$18B

DOMESTIC EXPORTS

1	GEORGIA	\$22B
2	TEXAS	\$19B
3	CALIFORNIA	\$15B
4	NORTH CAROLINA	\$12B
5	NEW YORK	\$10B

INTERNATIONAL IMPORTS

1	CHINA	\$9.5B
2	JAPAN	\$6.5B
3	BRAZIL	\$6.4B
4	MEXICO	\$4.5B
5	CHILE	\$3.7B

INTERNATIONAL EXPORTS

1	BRAZIL	\$13.4B
2	COLOMBIA	\$4.2B
3	ARGENTINA	\$3.6B
4	DOMINICAN REPUBLIC	\$3.1B
5	CHILE	\$3B

TRANSPORTATION STATISTICS AND FREIGHT MOVEMENT BY MODE



83%
TONNAGE

71%
VALUE

123,104 Public roadway mileage
12,130 State Highway System (SHS) mileage
30.7M Daily truck miles traveled on SHS
98 Public truck parking facilities



3.5%
TONNAGE

2.9%
VALUE

15 Deepwater seaports
4.1M Twenty-foot equivalent units (TEUs)
16.8M Annual cruise passengers



6.7%
TONNAGE

1.8%
VALUE

2,936 Miles of roads
6.9M Annual rail passenger traffic



0.1%
TONNAGE

5.4%
VALUE

129 Public use airports
20 Commercial service airports
2 Active spaceports



3.6%
TONNAGE

1%
VALUE

5,899 Miles of gas transmission and hazardous liquid pipelines



3.1%
TONNAGE

17.9%
VALUE

Includes shipments by multiple modes and by parcel delivery services, U.S. Postal Service, or couriers (capped at 150 pounds). This category is not limited to containerized or trailer-on-flatcar shipments.

FLORIDA COMMODITY FLOWS (2018-2045)



IMPORTS



WITHIN FL



EXPORTS

	2018	2045	2018	2045	2018	2045
TONNAGE	142M	190M	656M	761M	57M	103M
VALUE	\$321B	\$690B	\$402B	\$844B	\$180B	\$606B

Freight Analysis Framework (FAF) 4.5.1.



Rickey Fitzgerald
Manager, Freight & Multimodal Operations
 Florida Department of Transportation
 605 Suwannee Street, Tallahassee, FL 32399
 Rickey.Fitzgerald@dot.state.fl.us
 850.414.4702