

FREIGHT AND LOGISTICS OVERVIEW

FEBRUARY 2021

CITRUS COUNTY



Mission: The department will provide a safe transportation system that ensures the mobility of people and goods, enhances economic prosperity, and preserves the quality of our environment and communities.

CITRUS COUNTY HIGHLIGHTS

"MANATEE CAPITAL OF THE WORLD"

AREA (SQ . MILES)

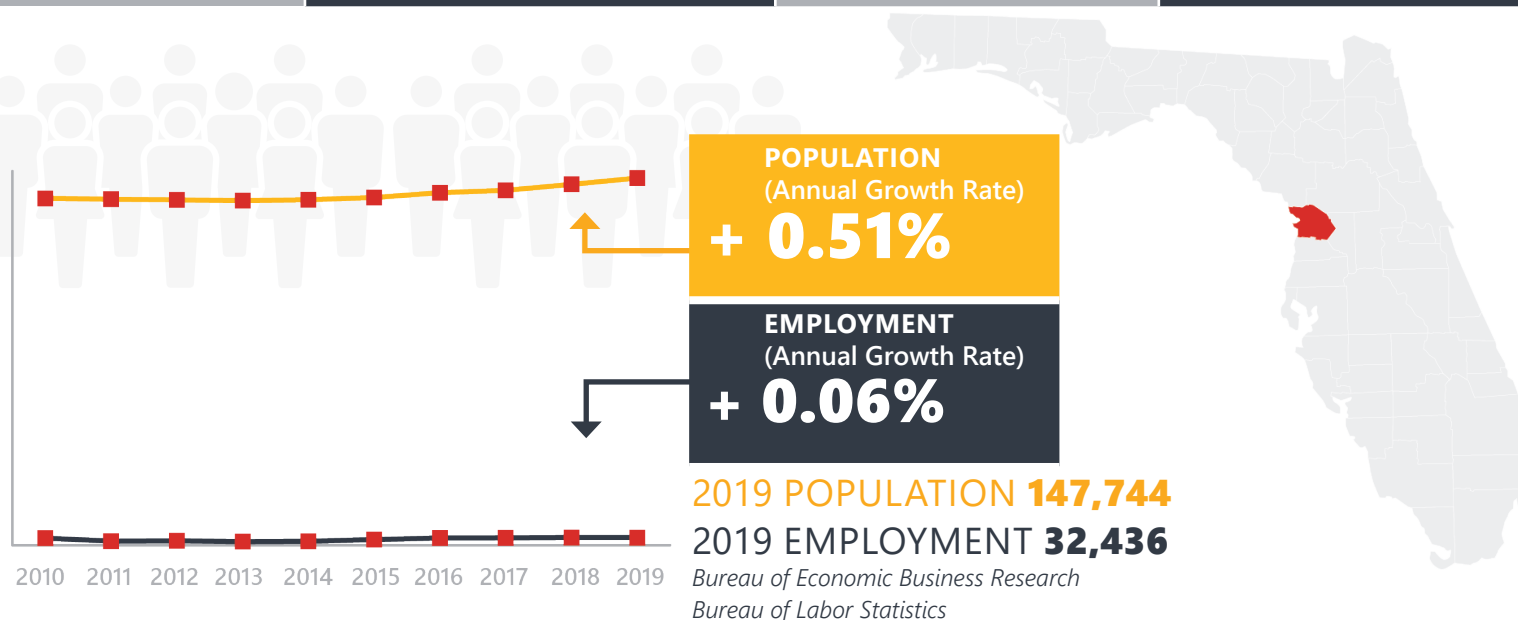
773

COUNTY SEAT

INVERNESS

LARGEST CITY (SIZE)

INVERNESS



LARGEST INDUSTRY SECTORS BY EMPLOYMENT (2019)

Office of Economic and Demographic Research



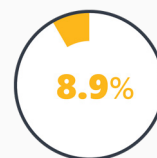
Education & health services



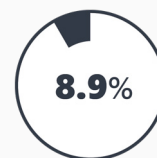
Trade, transportation & utilities



Leisure & hospitality



Professional & business services



Construction

FASTEST GROWING INDUSTRIES (2010-2019)

LEISURE AND HOSPITALITY

1,145

CONSTRUCTION

577

FINANCIAL ACTIVITIES

133

MANUFACTURING

46

JOBS ADDED

Bureau of Labor Statistics

DID YOU KNOW?

Kings Bay in the City of Crystal River is fed by more than 70 springs and as many as 800 manatees shelter in its warm waters each winter.

Citrus County is the only place in the world you are able to legally interact and swim with manatees.

At 46 miles long, the Withlacoochee State Trail in this county is one of Florida's top-rated SunTrail cycling corridors.

COMMODITY FLOW HIGHLIGHTS



IMPORTS

WITHIN COUNTY

EXPORTS

	2018	2045	2018	2045	2018	2045
Tonnage:	2.83 M	2.35 M	142.29 K	135.43 K	3.99 M	1.72 M
Value:	\$ 0.88 B	\$ 1.25 B	\$ 10.43 M	\$ 23.41 M	\$ 0.25 B	\$ 0.32 B



TOP COMMODITY by Tonnage, 2018



Coal	1,252,167
Nonmetallic Minerals	665,794
Clay, Concrete, Glass, Stone	253,878
Petroleum or Coal Products	236,500
Warehouse, Distribution Center and Drayage Movements	183,363

Nonmetallic Minerals	3,184,425
Clay, Concrete, Glass, Stone	516,317
Petroleum or Coal Products	112,349
Waste or Scrap Materials	111,305
Lumber or Wood Products	39,838



TOP COMMODITY by Value, 2018

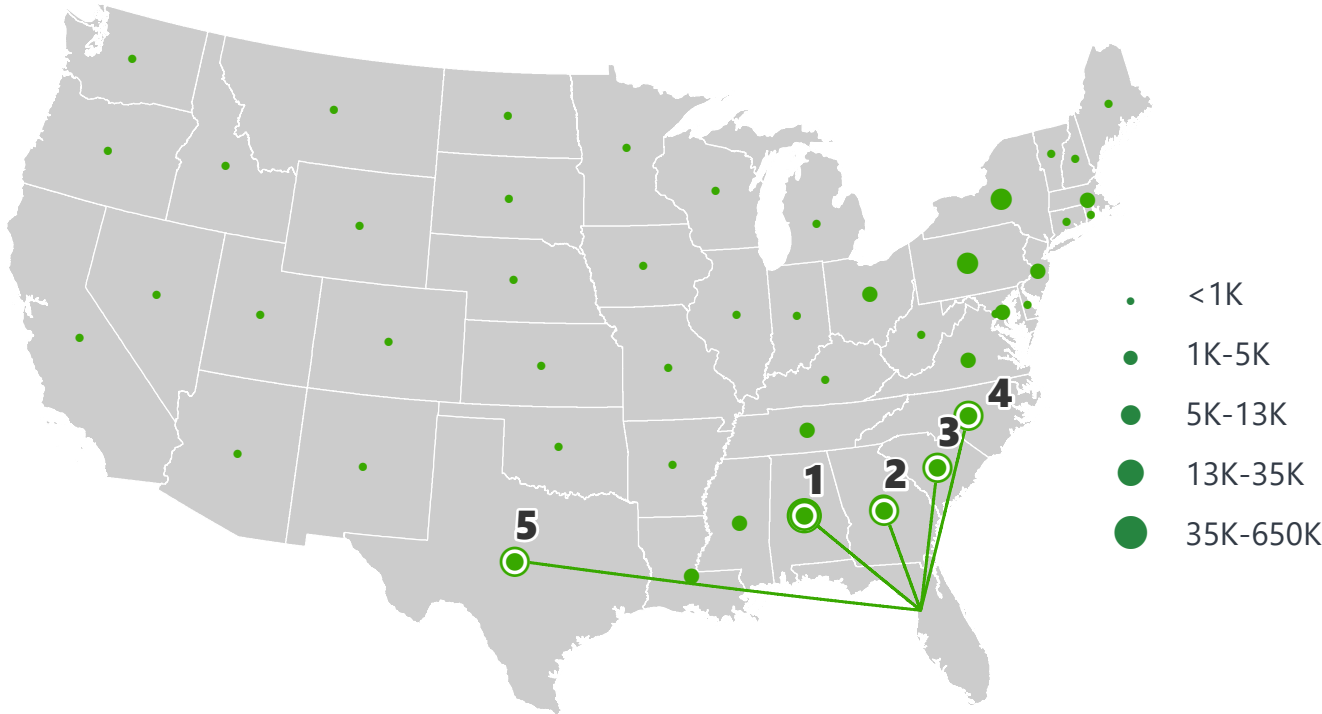


Warehouse, Distribution Center and Drayage Movements	\$ 224,741,093
Transportation Equipment	\$ 219,854,325
Petroleum or Coal Products	\$ 119,219,589
Food or Kindred Products	\$ 79,068,661
Coal	\$ 38,898,891

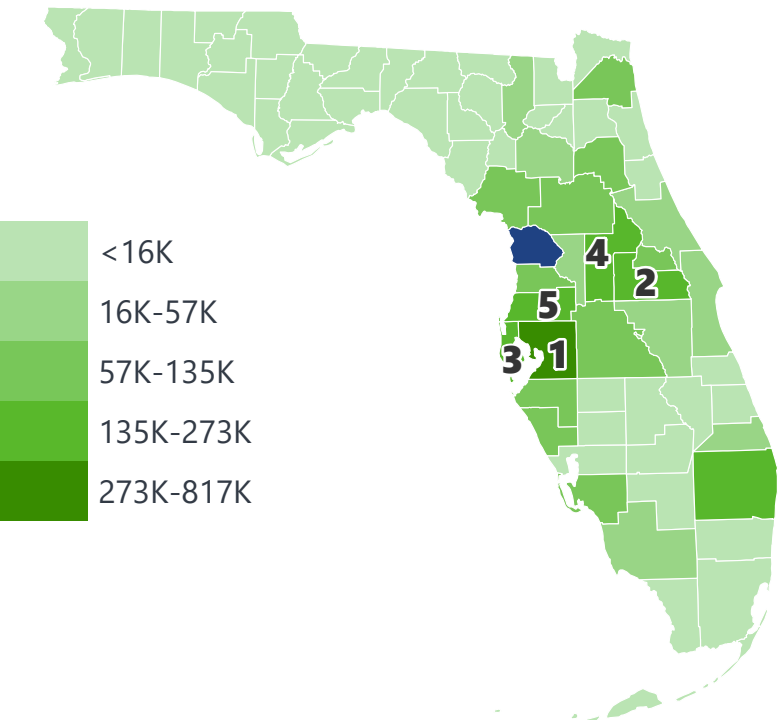
Clay, Concrete, Glass, Stone	\$ 46,597,895
Lumber or Wood Products	\$ 45,078,206
Marine Products	\$ 38,005,158
Nonmetallic Minerals	\$ 34,359,954
Waste or Scrap Materials	\$ 27,311,805

CITRUS COUNTY EXPORTS AND IMPORTS

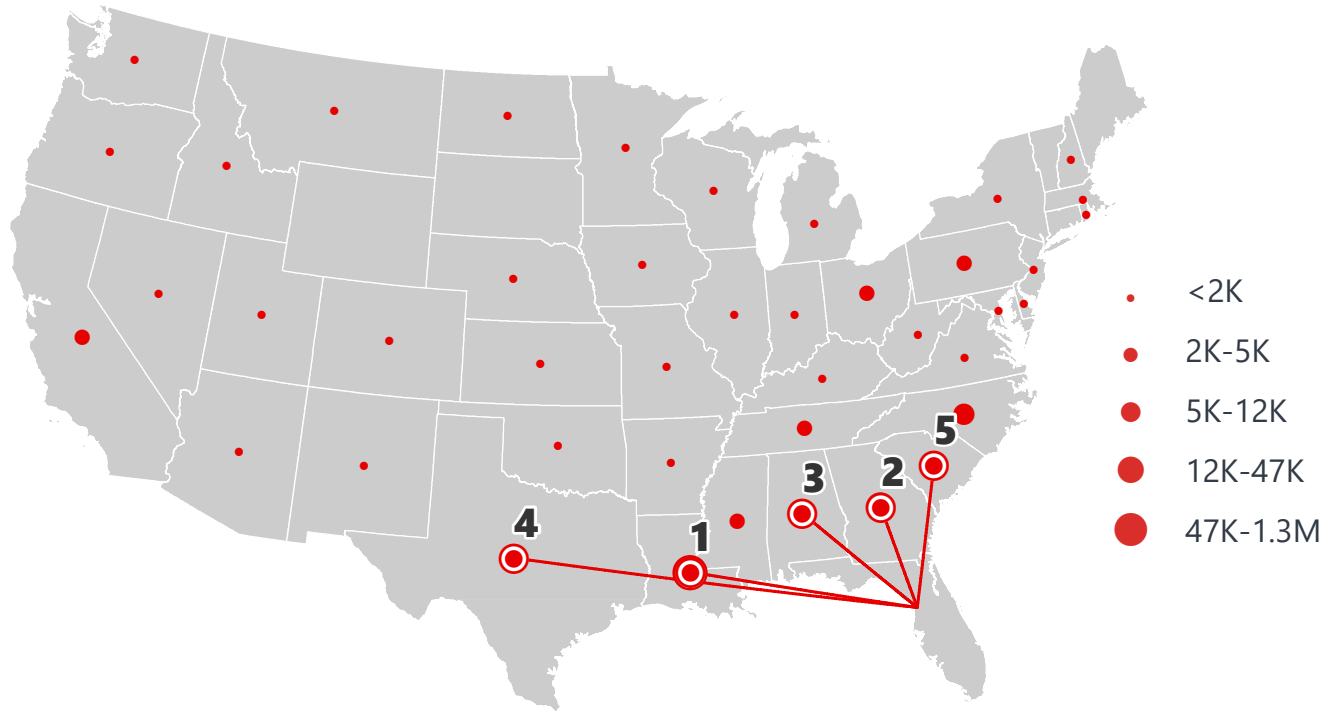
DOMESTIC EXPORTS (TONS)



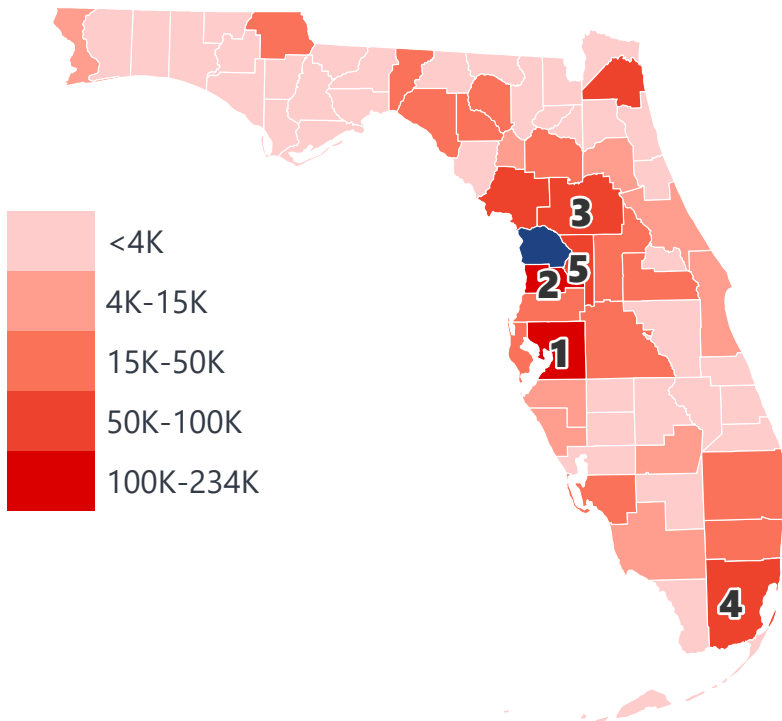
INTRASTATE EXPORTS (TONS)



DOMESTIC IMPORTS (TONS)



INTRASTATE IMPORTS (TONS)



DOMESTIC EXPORTS (TONNAGE)

1	Alabama	648,675
2	Georgia	35,394
3	South Carolina	12,668
4	North Carolina	12,008
5	Texas	7,781

INTRASTATE EXPORTS (TONNAGE)

1	Hillsborough	816,440
2	Orange	272,644
3	Pinellas	221,477
4	Lake	177,204
5	Pasco	173,047

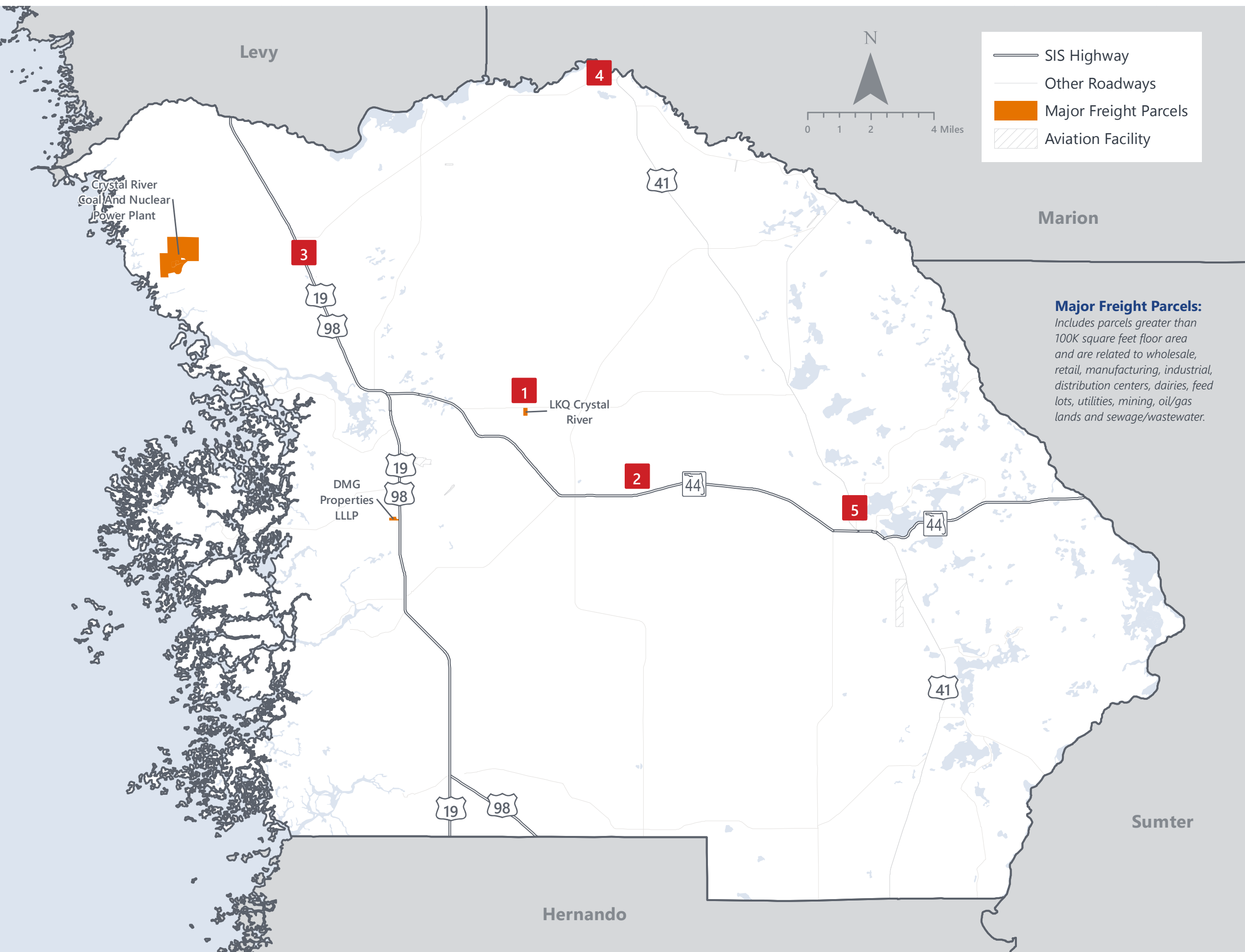
DOMESTIC IMPORTS (TONNAGE)

1	Louisiana	1,269,366
2	Georgia	46,840
3	Alabama	12,253
4	Texas	11,590
5	South Carolina	8,489

INTRASTATE IMPORTS (TONNAGE)

1	Hillsborough	233,092
2	Hernando	190,053
3	Marion	103,297
4	Miami-Dade	95,803
5	Sumter	87,612

CITRUS COUNTY FREIGHT INFRASTRUCTURE



Major Freight Parcels:

Includes parcels greater than 100K square feet floor area and are related to wholesale, retail, manufacturing, industrial, distribution centers, dairies, feed lots, utilities, mining, oil/gas lands and sewage/wastewater.

LARGEST FREIGHT EMPLOYERS

1	Keystone Automotive Industries	200-300
2	Technology Conservation Group	50-100
3	CCC Transportation	50-100
4	Air Distributors Inc.	50-100
5	USPS	50-100

MAJOR FREIGHT LAND USES

4.7 M SQ.FT Floor Area

52.19%	Warehousing and distribution centers
21.76%	Utilities
15.88%	Light manufacturing
4.87%	Open storage
2.30%	Airports, bus terminals and marine terminals

487.6 M SQ.FT LAND AREA

56.95%	Utilities
27.28%	Sewage disposal and waste land
7.63%	Mining lands, petroleum lands, or gas lands
3.70%	Warehousing and distribution centers
1.43%	Light manufacturing

MAJOR COUNTY COMMODITIES



IMPORTS



TOP COMMODITY by Tonnage, 2018 (relative to Florida)

FL Rank	Commodity	% Florida Share
5	Coal	12.35%
34	Clay, Concrete, Glass, Stone	0.61%
31	Nonmetallic Minerals	0.55%
31	Waste or Scrap Materials	0.45%
35	Warehouse, Distribution Center and Drayage Movements	0.43%

EXPORTS



FL Rank	Commodity	% Florida Share
8	Nonmetallic Minerals	3.09%
8	Marine Products	1.93%
8	Leather or Leather Products	1.32%
28	Clay, Concrete, Glass, Stone	1.05%
47	Lumber or Wood Products	0.43%

TOP COMMODITY by Value, 2018 (relative to Florida)

FL Rank	Commodity	% Florida Share
5	Coal	12.34%
35	Clay, Concrete, Glass, Stone	0.46%
30	Waste or Scrap Materials	0.44%
35	Nonmetallic Minerals	0.40%
30	Transportation Equipment	0.30%

FL Rank	Commodity	% Florida Share
8	Marine Products	2.36%
10	Nonmetallic Minerals	2.27%
33	Lumber or Wood Products	0.90%
32	Clay, Concrete, Glass, Stone	0.61%
36	Waste or Scrap Materials	0.41%



TRANSPORTATION STATISTICS AND FREIGHT MOVEMENT BY MODE



112 K | Daily Truck Miles Traveled
- Planning Time Index
2,499 | Public Roadway Mileage



74 Miles | Distance from closest seaport
(Port Tampa Bay)



- Class I Mainline Miles
- Class II Mainline Miles
17.49 | Class III Mainline Miles (DUPZ, FNOR)



74 Miles | Distance from closest major
airport (Tampa International
Airport)

FLORIDA HIGHLIGHTS

3rd most populous US State

\$1T Gross Domestic Product

4th Largest US Economy and **17th Largest** Economy in World

Nation's **3rd largest** workforce

1 in 5 U.S. exporters are located in Florida

\$153B International Trade

1.76M jobs supported by Trade, Transportation and Utilities industry sector

1.25M jobs supported by Leisure and Hospitality industry sector

131M annual visitors

CAPITAL **TALLAHASSEE**

AREA
(SQ. MILES) **53,624**

LARGEST
CITY (SIZE) **JACKSONVILLE**

POPULATION
(2019) **21,208,589**

ANNUAL POP
GROWTH RATE
(2010-2019) **1.4%**

EMPLOYMENT
(2019) **8,884,065**

ANNUAL EMP
GROWTH RATE
(2010-2019) **2.8%**

*Bureau of Economic Business Research,
Bureau of Labor Statistics*

DOMESTIC IMPORTS

1	GEORGIA	\$44B
2	CALIFORNIA	\$29B
3	TEXAS	\$26B
4	ALABAMA	\$18B
5	ILLINOIS	\$18B

DOMESTIC EXPORTS

1	GEORGIA	\$22B
2	TEXAS	\$19B
3	CALIFORNIA	\$15B
4	NORTH CAROLINA	\$12B
5	NEW YORK	\$10B

INTERNATIONAL IMPORTS

1	CHINA	\$9.5B
2	JAPAN	\$6.5B
3	BRAZIL	\$6.4B
4	MEXICO	\$4.5B
5	CHILE	\$3.7B

INTERNATIONAL EXPORTS

1	BRAZIL	\$13.4B
2	COLOMBIA	\$4.2B
3	ARGENTINA	\$3.6B
4	DOMINICAN REPUBLIC	\$3.1B
5	CHILE	\$3B

TRANSPORTATION STATISTICS AND FREIGHT MOVEMENT BY MODE



83%
TONNAGE

71%
VALUE

123,104 Public roadway mileage
12,130 State Highway System (SHS) mileage
30.7M Daily truck miles traveled on SHS
98 Public truck parking facilities



3.5%
TONNAGE

2.9%
VALUE

15 Deepwater seaports
4.1M Twenty-foot equivalent units (TEUs)
16.8M Annual cruise passengers



6.7%
TONNAGE

1.8%
VALUE

2,936 Miles of roads
6.9M Annual rail passenger traffic



0.1%
TONNAGE

5.4%
VALUE

129 Public use airports
20 Commercial service airports
2 Active spaceports



3.6%
TONNAGE

1%
VALUE

5,899 Miles of gas transmission and hazardous liquid pipelines



3.1%
TONNAGE

17.9%
VALUE

Includes shipments by multiple modes and by parcel delivery services, U.S. Postal Service, or couriers (capped at 150 pounds). This category is not limited to containerized or trailer-on-flatcar shipments.

FLORIDA COMMODITY FLOWS (2018-2045)



IMPORTS



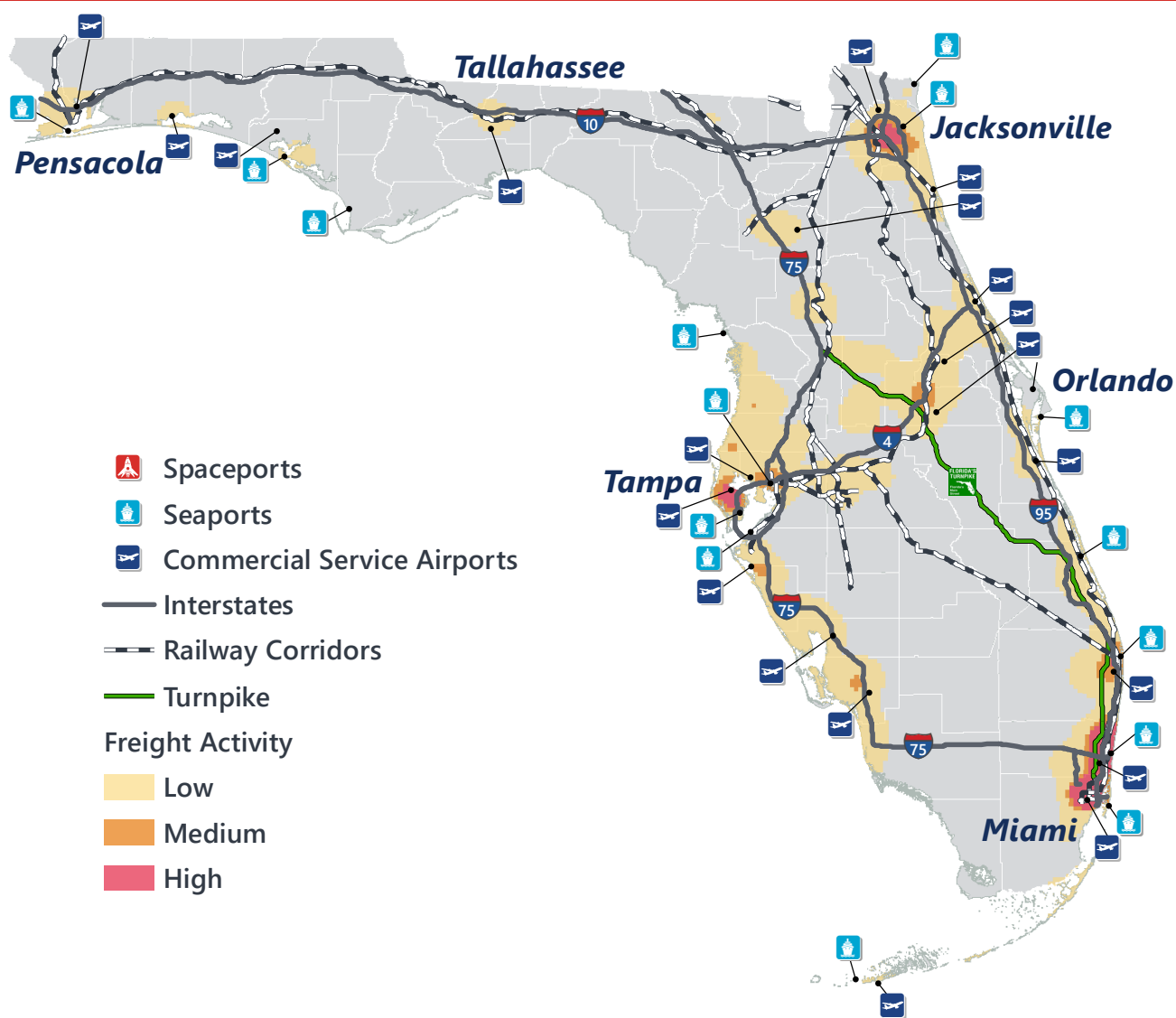
WITHIN FL



EXPORTS

	2018	2045	2018	2045	2018	2045
TONNAGE	142M	190M	656M	761M	57M	103M
VALUE	\$321B	\$690B	\$402B	\$844B	\$180B	\$606B

Freight Analysis Framework (FAF) 4.5.1.



Rickey Fitzgerald
 Manager, Freight & Multimodal Operations
 Florida Department of Transportation
 605 Suwannee Street, Tallahassee, FL 32399
 Rickey.Fitzgerald@dot.state.fl.us
 850.414.4702