

FREIGHT AND LOGISTICS OVERVIEW

FEBRUARY 2021

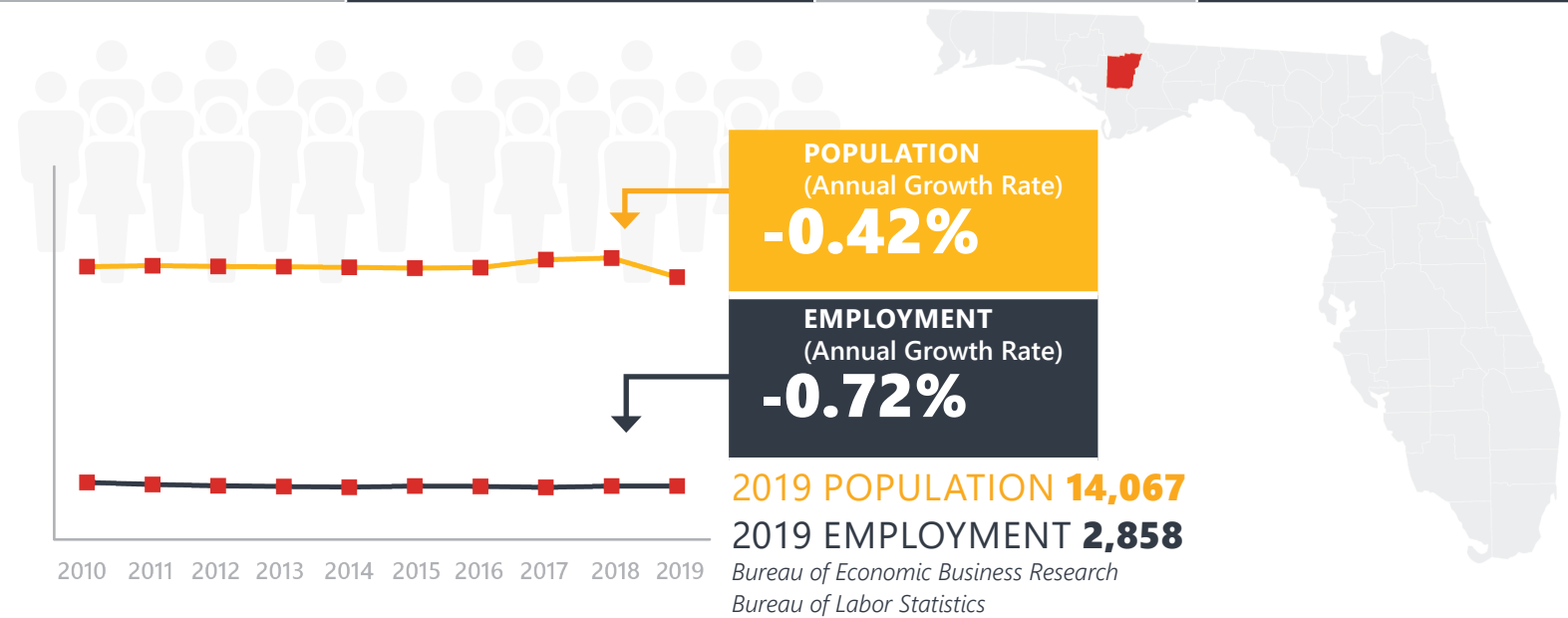
CALHOUN COUNTY



Mission: The department will provide a safe transportation system that ensures the mobility of people and goods, enhances economic prosperity, and preserves the quality of our environment and communities.

CALHOUN COUNTY HIGHLIGHTS

"HISTORY AND HERITAGE"		AREA (SQ . MILES)	574
COUNTY SEAT	BLOUNTSTOWN	LARGEST CITY (SIZE)	BLOUNTSTOWN



LARGEST INDUSTRY SECTORS BY EMPLOYMENT (2019)

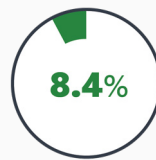
Office of Economic and Demographic Research



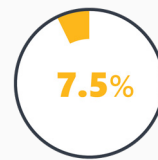
Education & health services



Trade, transportation & utilities



Leisure & hospitality



Construction



Natural resources & mining

FASTEST GROWING INDUSTRIES (2010-2019)

EDUCATION AND HEALTH SERVICES	JOBS ADDED	71
LEISURE AND HOSPITALITY		58
CONSTRUCTION		42
PROFESSIONAL AND BUSINESS SERVICES		37
OTHER SERVICES		4

Bureau of Labor Statistics

DID YOU KNOW?

Calhoun County was home to Florida's shortest railroad line, the M&B Railroad (1909-1972). It is now recycled as a recreational trail - Blountstown Greenway.

The county is home to the corporate office of the Oglesby Plants International, one of the United States' most experienced plant tissues culture laboratories.

Blountstown is home to the Panhandle Pioneer Settlement, where over 18 historic structures depict the life and times of pioneers, settlers and 20th Century Floridians.

COMMODITY FLOW HIGHLIGHTS



IMPORTS

WITHIN COUNTY

EXPORTS

2018

2045

2018

2045

2018

2045

Tonnage:	84.46 K	121.73 K	711	88	0.16 M	0.12 M
Value:	\$ 44.36 M	\$ 66.49 M	\$ 124.5 K	\$ 15.42 K	\$ 39.61 M	\$ 39.56 M



TOP COMMODITY by Tonnage, 2018



Petroleum or Coal Products	25,542
Clay, Concrete, Glass, Stone	18,607
Lumber or Wood Products	15,385
Warehouse, Distribution Center and Drayage Movements	13,559
Nonmetallic Minerals	9,665

Lumber or Wood Products	127,548
Farm Products	20,949
Waste or Scrap Materials	3,832
Warehouse, Distribution Center and Drayage Movements	3,516
Chemicals or Allied Products	2,003



TOP COMMODITY by Value, 2018

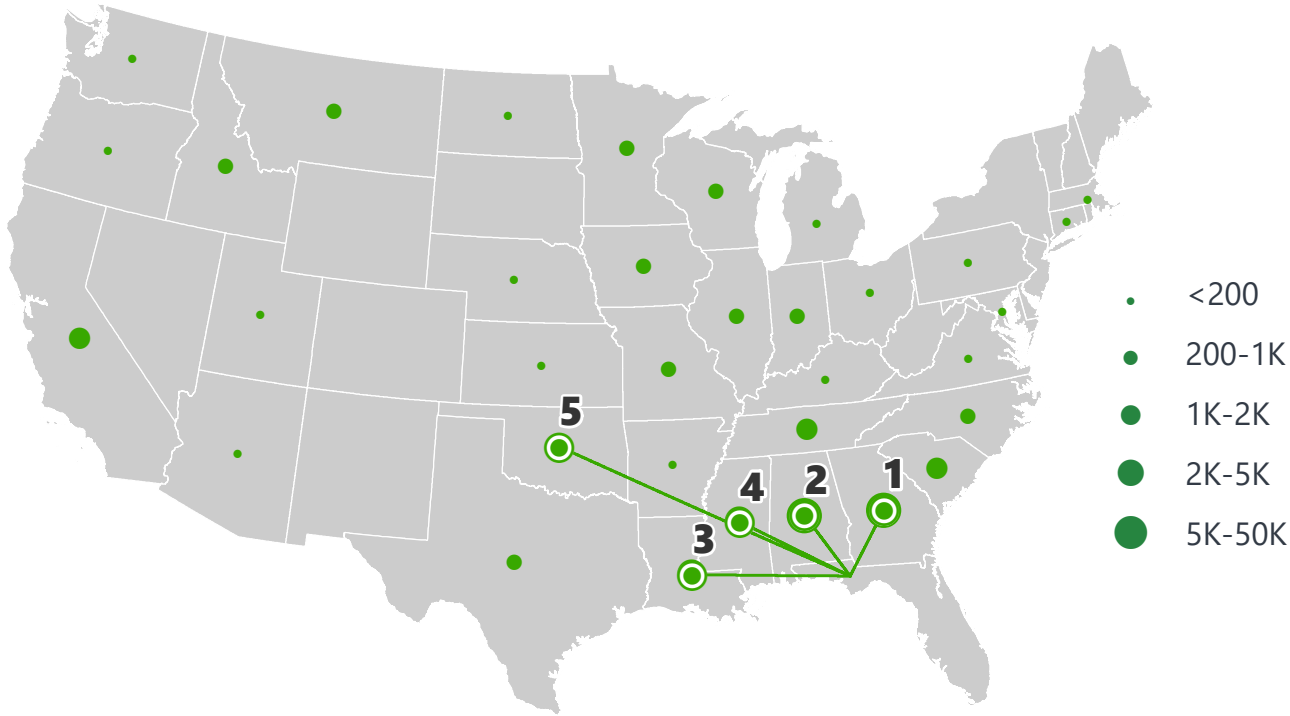


Warehouse, Distribution Center and Drayage Movements	\$ 17,812,517
Petroleum or Coal Products	\$ 14,665,797
Transportation Equipment	\$ 5,808,804
Lumber or Wood Products	\$ 2,982,992
Clay, Concrete, Glass, Stone	\$ 1,964,593

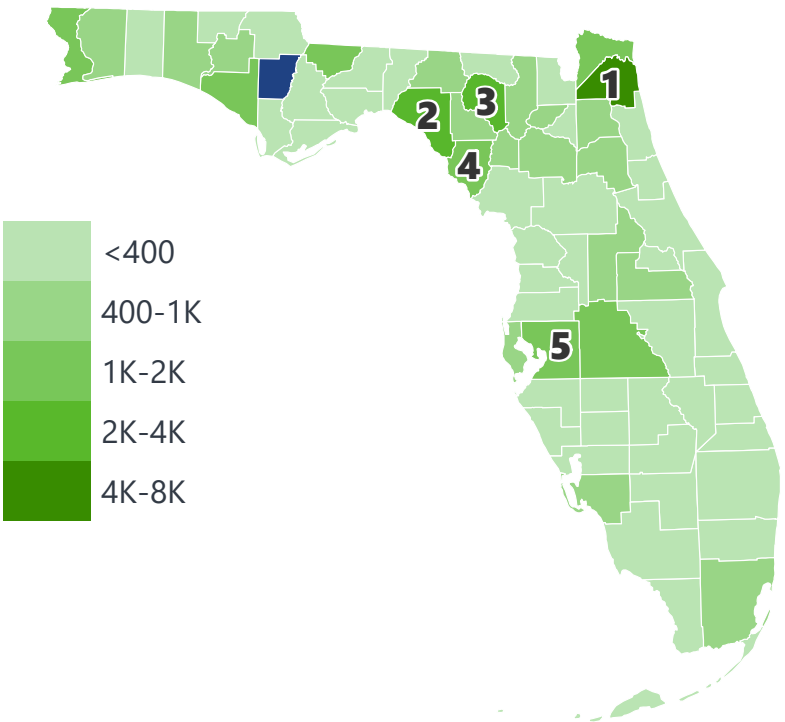
Lumber or Wood Products	\$ 22,599,441
Farm Products	\$ 9,436,431
Warehouse, Distribution Center and Drayage Movements	\$ 5,850,581
Waste or Scrap Materials	\$ 924,339
Chemicals or Allied Products	\$ 652,576

CALHOUN COUNTY EXPORTS AND IMPORTS

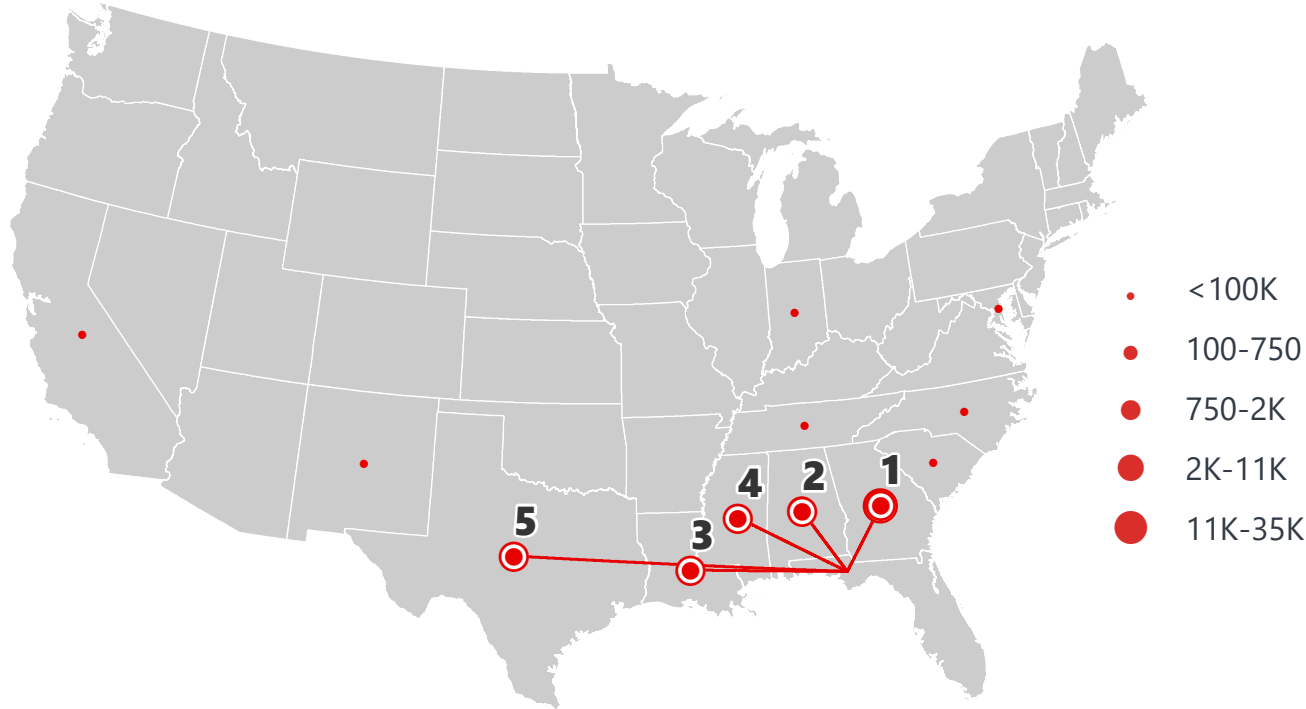
DOMESTIC EXPORTS (TONS)



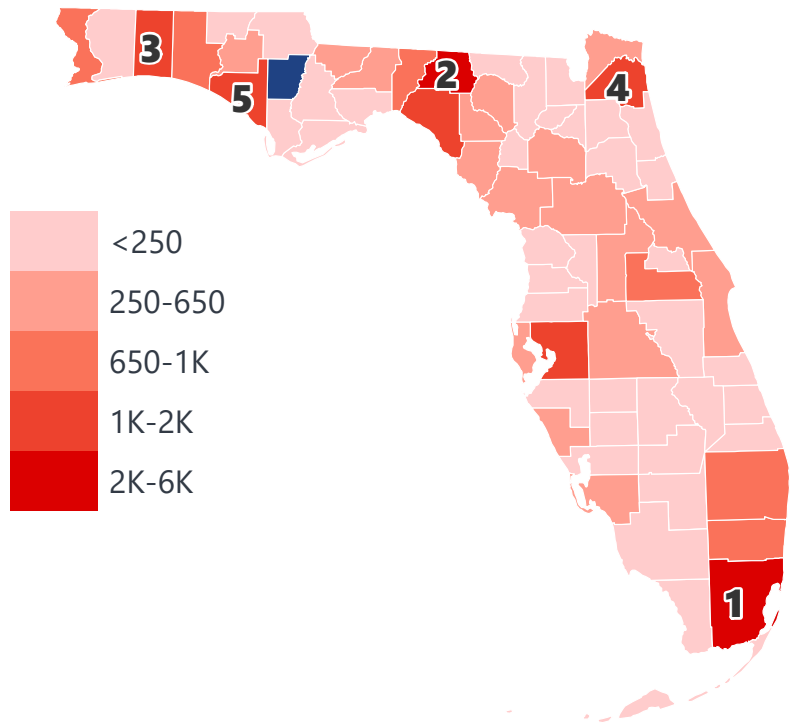
INTRASTATE EXPORTS (TONS)



DOMESTIC IMPORTS (TONS)



INTRASTATE IMPORTS (TONS)



DOMESTIC EXPORTS (TONNAGE)

1	Georgia	50,208
2	Alabama	43,098
3	Louisiana	4,875
4	Mississippi	4,497
5	Oklahoma	2,291

INTRASTATE EXPORTS (TONNAGE)

1	Duval	7,577
2	Taylor	4,450
3	Suwannee	3,302
4	Dixie	2,310
5	Hillsborough	2,118

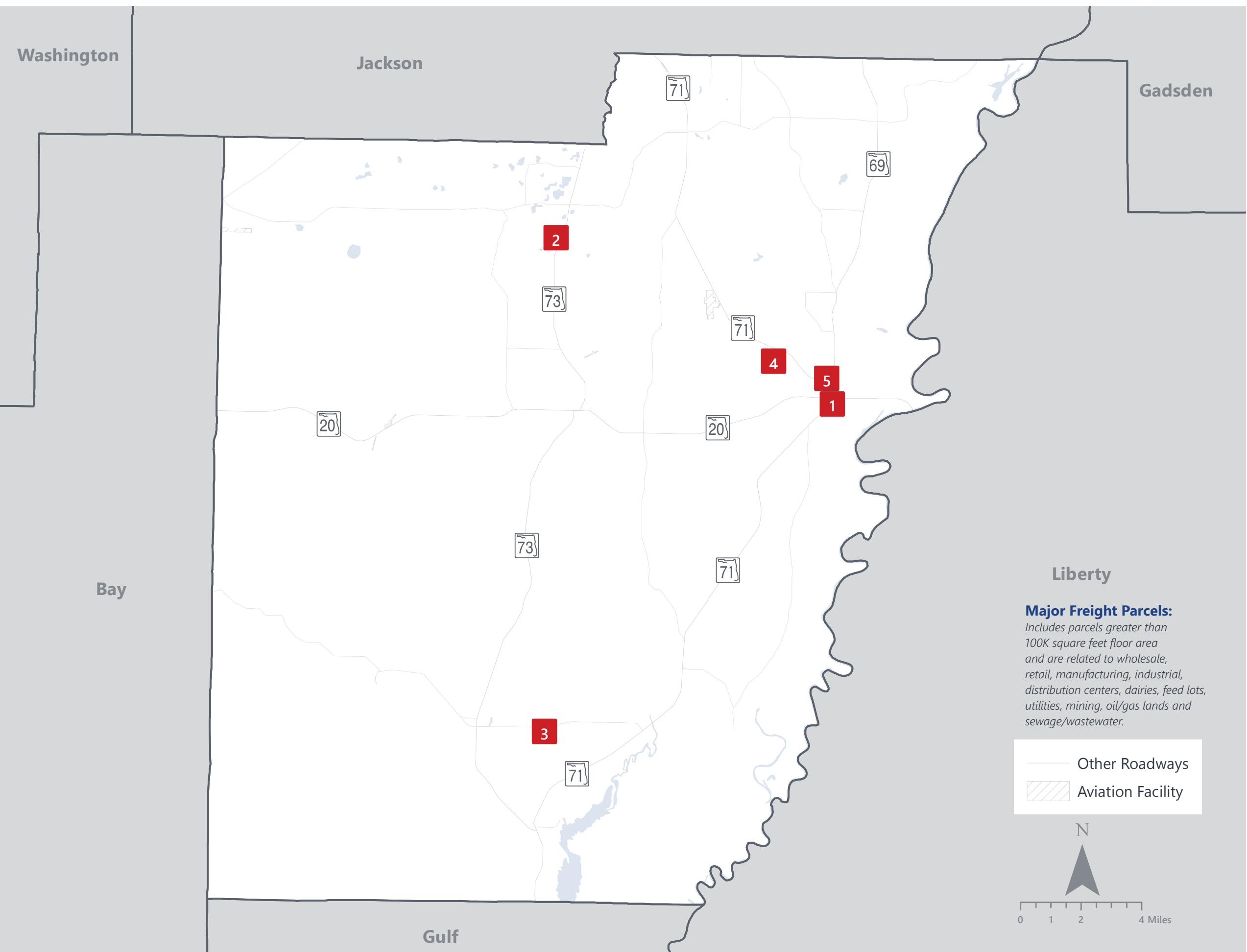
DOMESTIC IMPORTS (TONNAGE)

1	Georgia	34,369
2	Alabama	10,486
3	Louisiana	2,453
4	Mississippi	755
5	Texas	431

INTRASTATE IMPORTS (TONNAGE)

1	Miami-Dade	5,975
2	Madison	5,806
3	Okaloosa	2,131
4	Duval	2,103
5	Bay	1,632

CALHOUN COUNTY FREIGHT INFRASTRUCTURE



LARGEST FREIGHT EMPLOYERS

1	Bennett Eubanks Oil	50-100
2	Transport Leasing	50-100
3	M Joel Yon	0-50
4	Payroll	0-50
5	USPS	0-50

MAJOR FREIGHT LAND USES

0.4 M SQ.FT Floor Area

40.98%	Light manufacturing
38.65%	Warehousing and distribution centers
6.80%	Other food processing
5.13%	Wholesale outlets, produce houses, manufacturing outlets
4.30%	Fruit, vegetable and meat packing plants

31.3 M SQ.FT LAND AREA

43.35%	Utilities
16.62%	Light manufacturing
9.88%	Sewage disposal and waste land
8.22%	Warehousing and distribution centers
5.80%	Lumber yards, sawmills, planing mills

Florida Department of Economic Opportunity, 2018
Florida Department of Revenue, 2019

MAJOR COUNTY COMMODITIES



IMPORTS



TOP COMMODITY by Tonnage, 2018 (relative to Florida)

FL Rank	Commodity	% Florida Share
53	Lumber or Wood Products	0.11%
48	Forest Products	0.06%
59	Clay, Concrete, Glass, Stone	0.04%
59	Petroleum or Coal Products	0.04%
63	Warehouse, Distribution Center and Drayage Movements	0.03%

EXPORTS



FL Rank	Commodity	% Florida Share
21	Lumber or Wood Products	1.37%
49	Farm Products	0.15%
42	Chemicals or Allied Products	0.01%
66	Waste or Scrap Materials	0.01%
45	Warehouse, Distribution Center and Drayage Movements	0.01%

TOP COMMODITY by Value, 2018 (relative to Florida)

FL Rank	Commodity	% Florida Share
51	Forest Products	0.05%
59	Lumber or Wood Products	0.04%
60	Petroleum or Coal Products	0.03%
60	Clay, Concrete, Glass, Stone	0.03%
64	Warehouse, Distribution Center and Drayage Movements	0.02%

FL Rank	Commodity	% Florida Share
43	Lumber or Wood Products	0.45%
49	Farm Products	0.11%
66	Waste or Scrap Materials	0.01%
48	Warehouse, Distribution Center and Drayage Movements	0.01%
43	Chemicals or Allied Products	0.00%



TRANSPORTATION STATISTICS AND FREIGHT MOVEMENT BY MODE



49 K | Daily Truck Miles Traveled
- Planning Time Index
594 | Public Roadway Mileage



53 Miles | Distance from closest seaport
(Port of Panama City)



- Class I Mainline Miles
- Class II Mainline Miles
- Class III Mainline Miles



47 Miles | Distance from closest
major airport (Tallahassee
International Airport)

FLORIDA HIGHLIGHTS

3rd most populous US State

\$1T Gross Domestic Product

4th Largest US Economy and **17th Largest** Economy in World

Nation's **3rd largest** workforce

1 in 5 U.S. exporters are located in Florida

\$153B International Trade

1.76M jobs supported by Trade, Transportation and Utilities industry sector

1.25M jobs supported by Leisure and Hospitality industry sector

131M annual visitors

CAPITAL **TALLAHASSEE**

AREA (SQ. MILES) **53,624**

LARGEST CITY (SIZE) **JACKSONVILLE**

POPULATION (2019) **21,208,589**

ANNUAL POP GROWTH RATE (2010-2019) **1.4%**

EMPLOYMENT (2019) **8,884,065**

ANNUAL EMP GROWTH RATE (2010-2019) **2.8%**

*Bureau of Economic Business Research,
Bureau of Labor Statistics*

DOMESTIC IMPORTS

1	GEORGIA	\$44B
2	CALIFORNIA	\$29B
3	TEXAS	\$26B
4	ALABAMA	\$18B
5	ILLINOIS	\$18B

DOMESTIC EXPORTS

1	GEORGIA	\$22B
2	TEXAS	\$19B
3	CALIFORNIA	\$15B
4	NORTH CAROLINA	\$12B
5	NEW YORK	\$10B

INTERNATIONAL IMPORTS

1	CHINA	\$9.5B
2	JAPAN	\$6.5B
3	BRAZIL	\$6.4B
4	MEXICO	\$4.5B
5	CHILE	\$3.7B

INTERNATIONAL EXPORTS

1	BRAZIL	\$13.4B
2	COLOMBIA	\$4.2B
3	ARGENTINA	\$3.6B
4	DOMINICAN REPUBLIC	\$3.1B
5	CHILE	\$3B

TRANSPORTATION STATISTICS AND FREIGHT MOVEMENT BY MODE



83%
TONNAGE

71%
VALUE

123,104 Public roadway mileage
12,130 State Highway System (SHS) mileage
30.7M Daily truck miles traveled on SHS
98 Public truck parking facilities



3.5%
TONNAGE

2.9%
VALUE

15 Deepwater seaports
4.1M Twenty-foot equivalent units (TEUs)
16.8M Annual cruise passengers



6.7%
TONNAGE

1.8%
VALUE

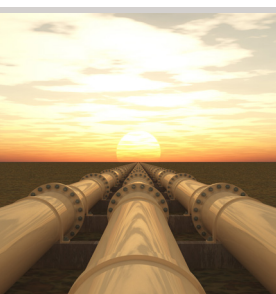
2,936 Miles of roads
6.9M Annual rail passenger traffic



0.1%
TONNAGE

5.4%
VALUE

129 Public use airports
20 Commercial service airports
2 Active spaceports



3.6%
TONNAGE

1%
VALUE

5,899 Miles of gas transmission and hazardous liquid pipelines



3.1%
TONNAGE

17.9%
VALUE

Includes shipments by multiple modes and by parcel delivery services, U.S. Postal Service, or couriers (capped at 150 pounds). This category is not limited to containerized or trailer-on-flatcar shipments.

FLORIDA COMMODITY FLOWS (2018-2045)



IMPORTS



WITHIN FL



EXPORTS

	2018	2045	2018	2045	2018	2045
TONNAGE	142M	190M	656M	761M	57M	103M
VALUE	\$321B	\$690B	\$402B	\$844B	\$180B	\$606B

Freight Analysis Framework (FAF) 4.5.1.



Rickey Fitzgerald
 Manager, Freight & Multimodal Operations
 Florida Department of Transportation
 605 Suwannee Street, Tallahassee, FL 32399
 Rickey.Fitzgerald@dot.state.fl.us
 850.414.4702