

FREIGHT AND LOGISTICS OVERVIEW

FEBRUARY 2021

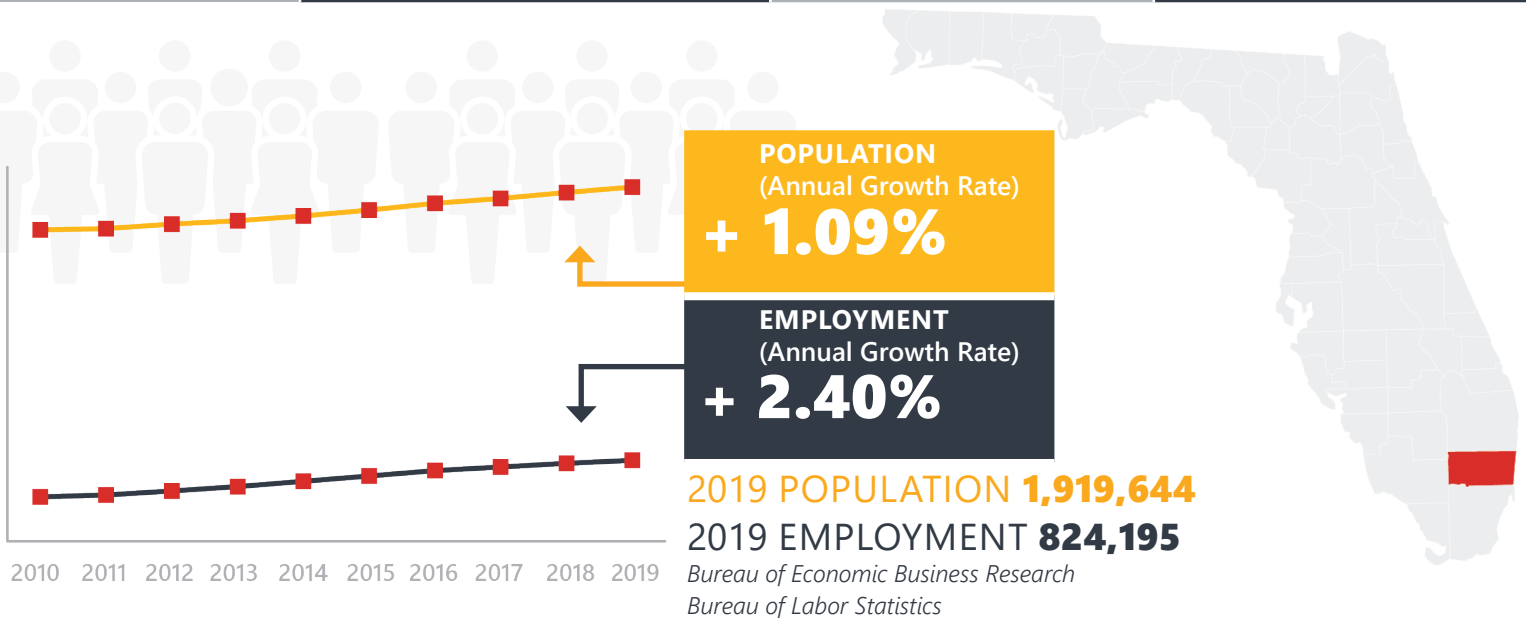
BROWARD COUNTY



Mission: The department will provide a safe transportation system that ensures the mobility of people and goods, enhances economic prosperity, and preserves the quality of our environment and communities.

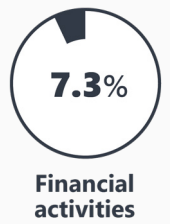
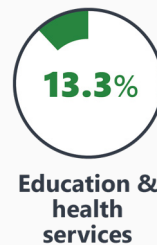
BROWARD COUNTY HIGHLIGHTS

"VENICE OF AMERICA"		AREA (SQ . MILES)	1,320
COUNTY SEAT	FORT LAUDERDALE	LARGEST CITY (SIZE)	FORT LAUDERDALE



LARGEST INDUSTRY SECTORS BY EMPLOYMENT (2019)

Office of Economic and Demographic Research



FASTEST GROWING INDUSTRIES (2010-2019)

TRADE, TRANSPORTATION, AND UTILITIES	JOBS ADDED	34,332
PROFESSIONAL AND BUSINESS SERVICES		31,829
LEISURE AND HOSPITALITY		20,753
CONSTRUCTION		17,725
EDUCATION AND HEALTH SERVICES		16,251

Bureau of Labor Statistics

DID YOU KNOW?

Broward County is home to the third busiest cruise port (Port Everglades) in the world with more than 3.9 million passengers.

Six beaches (Fort Lauderdale, Hollywood, Deerfield Beach, Pompano Beach, Dania Beach and Lauderdale-By-The-Sea) in the county are Blue Wave Certified by the Clean Beaches Council.

Twenty-three miles of Atlantic beaches and 300-plus miles of Intracoastal Waterway and navigable inland canals make Greater Fort Lauderdale the "Venice of America" and yachting capital.

COMMODITY FLOW HIGHLIGHTS



IMPORTS

WITHIN COUNTY

EXPORTS

2018

2045

2018

2045

2018

2045

Tonnage:	43.82 M	60.74 M	9.98 M	19.88 M	16.56 M	31.1 M
Value:	\$ 54.99 B	\$ 76.13 B	\$ 22.46 B	\$ 47.68 B	\$ 30.98 B	\$ 57.1 B



TOP COMMODITY by Tonnage, 2018



Petroleum or Coal Products	14,840,473
Nonmetallic Minerals	10,134,093
Warehouse, Distribution Center and Drayage Movements	4,674,617
Clay, Concrete, Glass, Stone	4,093,881
Food or Kindred Products	2,367,240

Clay, Concrete, Glass, Stone	3,760,774
Petroleum or Coal Products	3,736,950
Warehouse, Distribution Center and Drayage Movements	3,699,185
Waste or Scrap Materials	2,088,853
Farm Products	774,967



TOP COMMODITY by Value, 2018

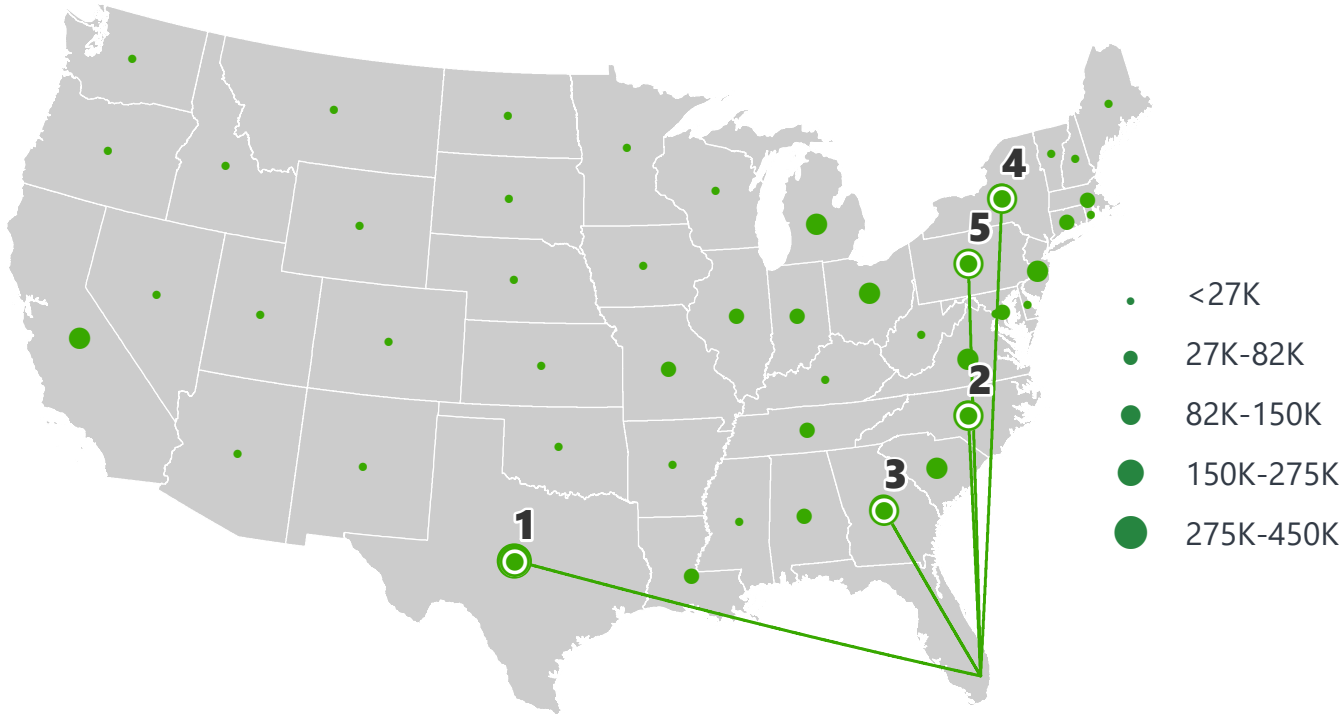


Warehouse, Distribution Center and Drayage Movements	\$ 10,774,270,186
Petroleum or Coal Products	\$ 9,510,057,039
Transportation Equipment	\$ 5,986,312,928
Misc. Mixed Shipments	\$ 4,236,732,875
Food or Kindred Products	\$ 3,668,121,649

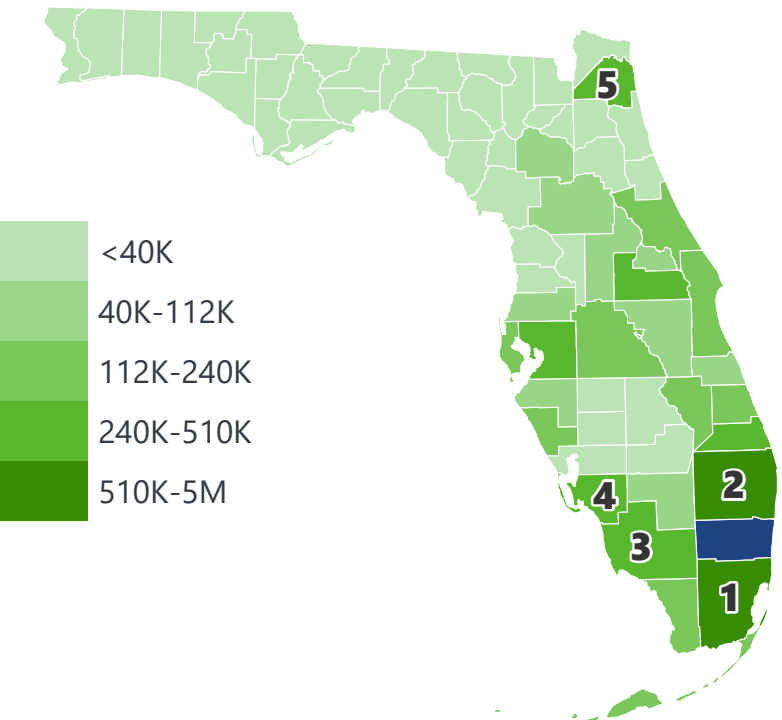
Warehouse, Distribution Center and Drayage Movements	\$ 11,190,176,089
Transportation Equipment	\$ 2,675,212,560
Petroleum or Coal Products	\$ 2,513,846,495
Apparel or Related Products	\$ 2,373,029,255
Chemicals or Allied Products	\$ 1,821,591,361

BROWARD COUNTY EXPORTS AND IMPORTS

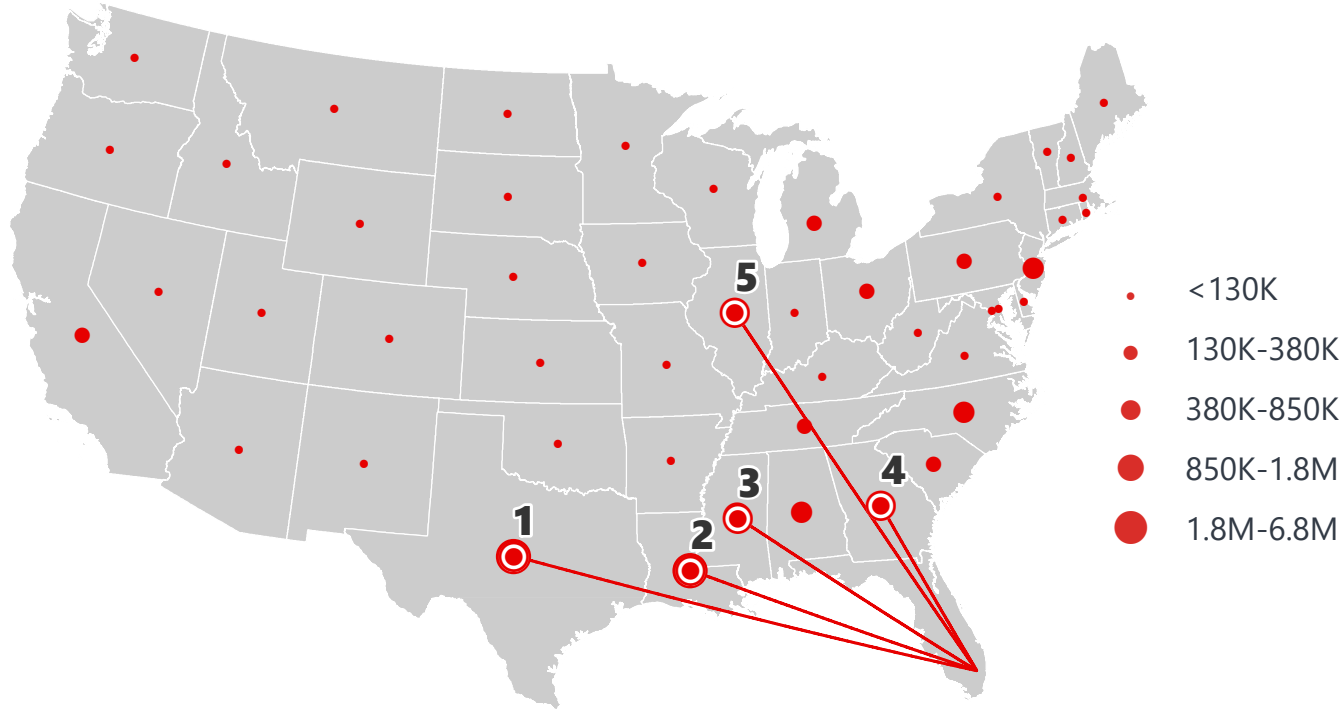
DOMESTIC EXPORTS (TONS)



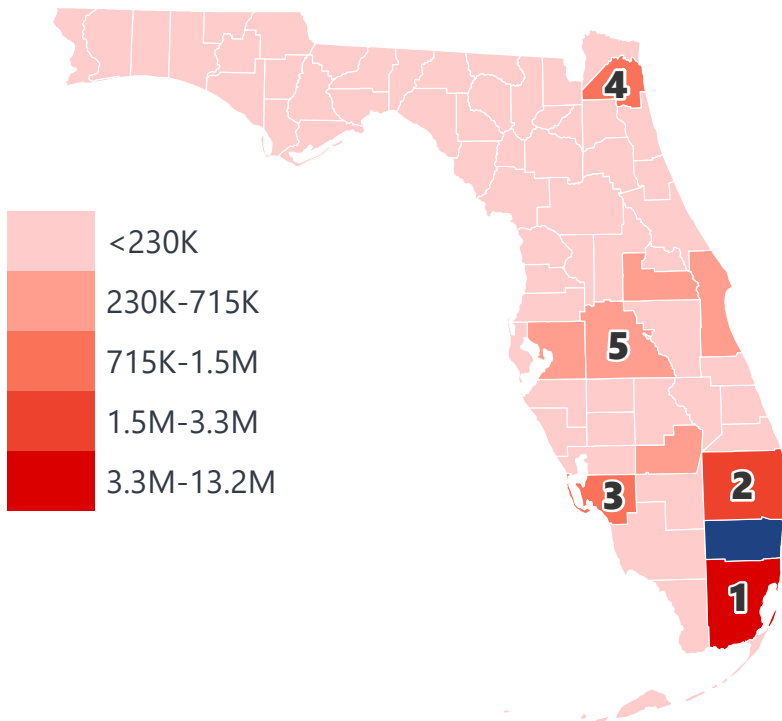
INTRASTATE EXPORTS (TONS)



DOMESTIC IMPORTS (TONS)



INTRASTATE IMPORTS (TONS)



DOMESTIC EXPORTS (TONNAGE)

1	Texas	447,484
2	North Carolina	272,924
3	Georgia	236,960
4	New York	218,695
5	Pennsylvania	152,665

INTRASTATE EXPORTS (TONNAGE)

1	Miami-Dade	4,990,417
2	Palm Beach	3,643,761
3	Collier	509,475
4	Lee	426,073
5	Duval	416,740

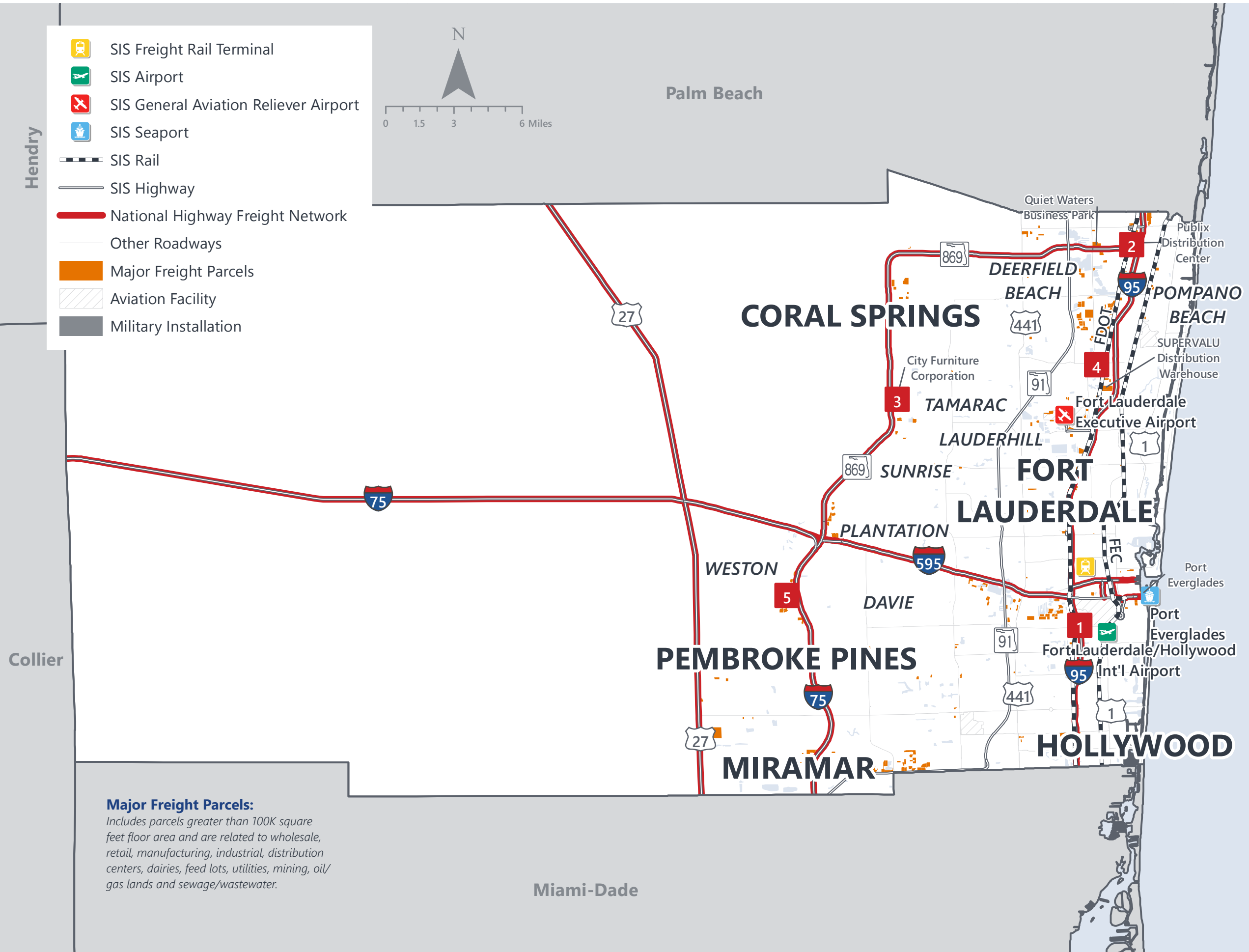
DOMESTIC IMPORTS (TONNAGE)

1	Texas	6,758,557
2	Louisiana	4,514,875
3	Mississippi	1,758,631
4	Georgia	846,963
5	Illinois	838,210

INTRASTATE IMPORTS (TONNAGE)

1	Miami-Dade	13,181,239
2	Palm Beach	3,303,091
3	Lee	1,540,029
4	Duval	1,079,467
5	Polk	713,613

BROWARD COUNTY FREIGHT INFRASTRUCTURE



LARGEST FREIGHT EMPLOYERS

1	Chewy Inc.	2K-3K
2	Publix Super Markets	1K-2K
3	City Furniture	1K-2K
4	Point Blank Enterprises	900-1K
5	Actavis Lab.	800-900

MAJOR FREIGHT LAND USES

148.3 M SQ.FT Floor Area

86.57%	Warehousing and distribution centers
8.35%	Light manufacturing
2.17%	Airports, bus terminals and marine terminals
2.04%	Utilities
0.67%	Wholesale outlets, produce houses, manufacturing outlets

18.8 B SQ.FT LAND AREA

95.80%	Sewage disposal and waste land
2.75%	Warehousing and distribution centers
0.61%	Utilities
0.41%	Airports, bus terminals and marine terminals
0.31%	Light manufacturing

Florida Department of Economic Opportunity, 2018
Florida Department of Revenue, 2019

MAJOR COUNTY COMMODITIES



IMPORTS



TOP COMMODITY
by Tonnage, 2018 (relative to Florida)

FL Rank	Commodity	% Florida Share
1	Leather or Leather Products	21.34%
2	Petroleum or Coal Products	21.08%
2	Machinery	15.42%
2	Textile Mill Products	14.22%
1	Marine Products	13.93%

EXPORTS



FL Rank	Commodity	% Florida Share
2	Apparel or Related Products	30.50%
5	Small Packaged Freight Shipments	12.87%
4	Printed Matter	11.38%
2	Warehouse, Distribution Center and Drayage Movements	10.56%
3	Petroleum or Coal Products	10.35%

TOP COMMODITY
by Value, 2018 (relative to Florida)

FL Rank	Commodity	% Florida Share
1	Leather or Leather Products	23.37%
2	Petroleum or Coal Products	22.61%
2	Textile Mill Products	14.53%
1	Marine Products	14.25%
2	Machinery	14.21%

FL Rank	Commodity	% Florida Share
2	Apparel or Related Products	33.80%
2	Warehouse, Distribution Center and Drayage Movements	16.18%
2	Petroleum or Coal Products	15.31%
2	Farm Products	12.88%
4	Chemicals or Allied Products	10.95%



TRANSPORTATION STATISTICS AND FREIGHT MOVEMENT BY MODE



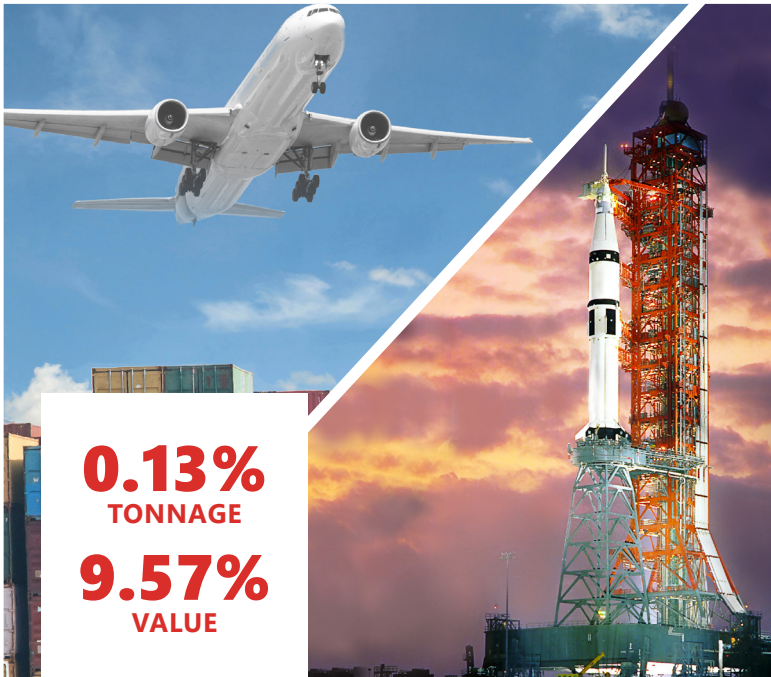
1.8 M | Daily Truck Miles Traveled
1.86 | Planning Time Index
5,094 | Public Roadway Mileage



1 Major Seaport | Port Everglades



25.32 | Class I Mainline Miles (CSX)
24.13 | Class II Mainline Miles (FEC)
- | Class III Mainline Miles



2 Major Airports | Fort Lauderdale/Hollywood Int'l Airport and Fort Lauderdale Executive Airport

FLORIDA HIGHLIGHTS

3rd most populous US State

\$1T Gross Domestic Product

4th Largest US Economy and **17th Largest** Economy in World

Nation's **3rd largest** workforce

1 in 5 U.S. exporters are located in Florida

\$153B International Trade

1.76M jobs supported by Trade, Transportation and Utilities industry sector

1.25M jobs supported by Leisure and Hospitality industry sector

131M annual visitors

CAPITAL **TALLAHASSEE**

AREA
(SQ. MILES) **53,624**

LARGEST
CITY (SIZE) **JACKSONVILLE**

POPULATION
(2019) **21,208,589**

ANNUAL POP
GROWTH RATE
(2010-2019) **1.4%**

EMPLOYMENT
(2019) **8,884,065**

ANNUAL EMP
GROWTH RATE
(2010-2019) **2.8%**

*Bureau of Economic Business Research,
Bureau of Labor Statistics*

DOMESTIC IMPORTS

1	GEORGIA	\$44B
2	CALIFORNIA	\$29B
3	TEXAS	\$26B
4	ALABAMA	\$18B
5	ILLINOIS	\$18B

DOMESTIC EXPORTS

1	GEORGIA	\$22B
2	TEXAS	\$19B
3	CALIFORNIA	\$15B
4	NORTH CAROLINA	\$12B
5	NEW YORK	\$10B

INTERNATIONAL IMPORTS

1	CHINA	\$9.5B
2	JAPAN	\$6.5B
3	BRAZIL	\$6.4B
4	MEXICO	\$4.5B
5	CHILE	\$3.7B

INTERNATIONAL EXPORTS

1	BRAZIL	\$13.4B
2	COLOMBIA	\$4.2B
3	ARGENTINA	\$3.6B
4	DOMINICAN REPUBLIC	\$3.1B
5	CHILE	\$3B

TRANSPORTATION STATISTICS AND FREIGHT MOVEMENT BY MODE



83%
TONNAGE

71%
VALUE

123,104 Public roadway mileage
12,130 State Highway System (SHS) mileage
30.7M Daily truck miles traveled on SHS
98 Public truck parking facilities



3.5%
TONNAGE

2.9%
VALUE

15 Deepwater seaports
4.1M Twenty-foot equivalent units (TEUs)
16.8M Annual cruise passengers



6.7%
TONNAGE

1.8%
VALUE

2,936 Miles of roads
6.9M Annual rail passenger traffic



0.1%
TONNAGE

5.4%
VALUE

129 Public use airports
20 Commercial service airports
2 Active spaceports



3.6%
TONNAGE

1%
VALUE

5,899 Miles of gas transmission and hazardous liquid pipelines



3.1%
TONNAGE

17.9%
VALUE

Includes shipments by multiple modes and by parcel delivery services, U.S. Postal Service, or couriers (capped at 150 pounds). This category is not limited to containerized or trailer-on-flatcar shipments.

FLORIDA COMMODITY FLOWS (2018-2045)



IMPORTS



WITHIN FL



EXPORTS

	2018	2045	2018	2045	2018	2045
TONNAGE	142M	190M	656M	761M	57M	103M
VALUE	\$321B	\$690B	\$402B	\$844B	\$180B	\$606B

Freight Analysis Framework (FAF) 4.5.1.



Rickey Fitzgerald
Manager, Freight & Multimodal Operations
 Florida Department of Transportation
 605 Suwannee Street, Tallahassee, FL 32399
 Rickey.Fitzgerald@dot.state.fl.us
 850.414.4702