

FREIGHT AND LOGISTICS OVERVIEW

FEBRUARY 2021

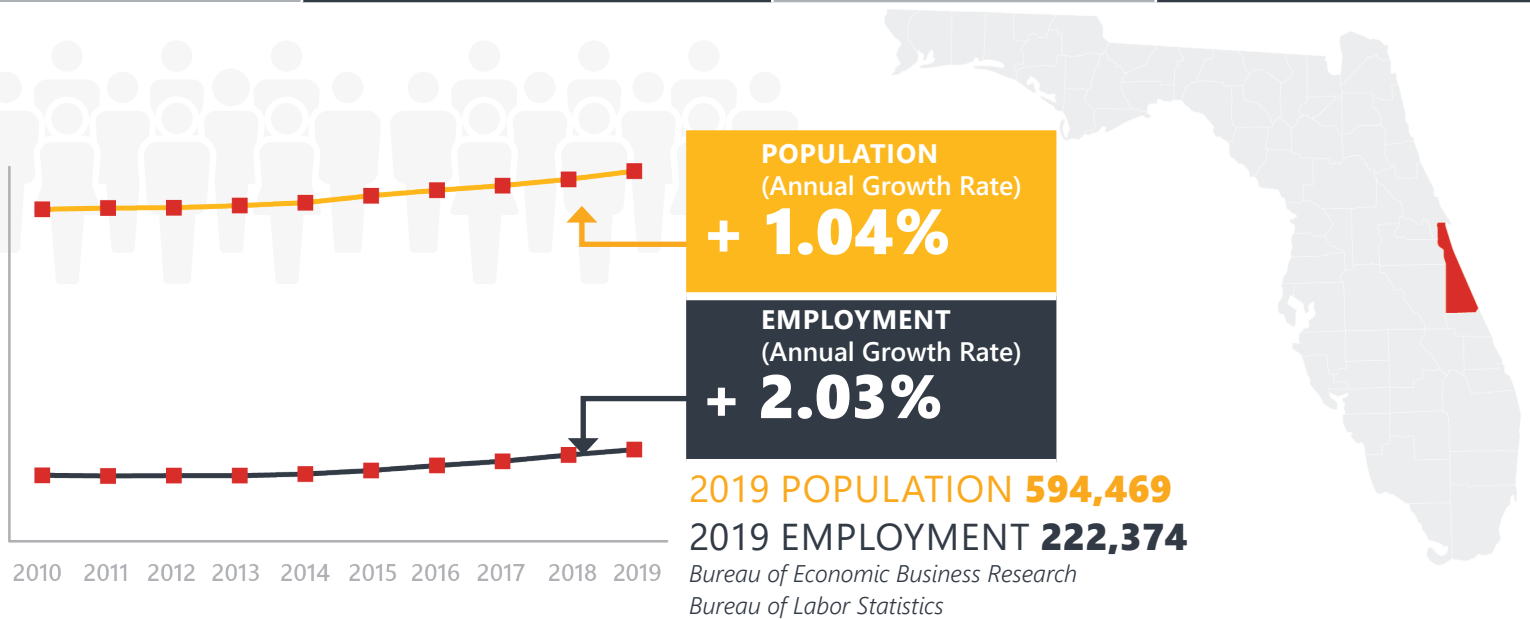
BREVARD COUNTY



Mission: The department will provide a safe transportation system that ensures the mobility of people and goods, enhances economic prosperity, and preserves the quality of our environment and communities.

BREVARD COUNTY HIGHLIGHTS

"SPACE COAST"		AREA (SQ. MILES)	1,557
COUNTY SEAT	TITUSVILLE	LARGEST CITY (SIZE)	PALM BAY



LARGEST INDUSTRY SECTORS BY EMPLOYMENT (2019)

Office of Economic and Demographic Research



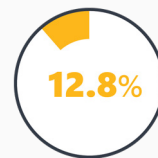
Education & health services



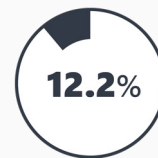
Trade, transportation & utilities



Professional & business services



Leisure & hospitality



Manufacturing

FASTEST GROWING INDUSTRIES (2010-2019)

LEISURE AND HOSPITALITY	JOBS ADDED	7,586
MANUFACTURING		6,767
CONSTRUCTION		6,597
EDUCATION AND HEALTH SERVICES		6,356
TRADE, TRANSPORTATION, AND UTILITIES		4,972

Bureau of Labor Statistics

DID YOU KNOW?

Brevard County's area code, 321, is directly based on the 3-2-1 countdown sequence used during shuttle liftoffs.

Kennedy Space Center remains the most recognized of Brevard County's attractions.

Port Canaveral is the second busiest cruise port in the world.

COMMODITY FLOW HIGHLIGHTS



IMPORTS

WITHIN COUNTY

EXPORTS

2018

2045

2018

2045

2018

2045

Tonnage:	12.32 M	19.07 M	0.97 M	1.89 M	5.49 M	9.98 M
Value:	\$ 13.28 B	\$ 24.86 B	\$ 1.58 B	\$ 2.52 B	\$ 5.07 B	\$ 9.79 B



TOP COMMODITY by Tonnage, 2018



Nonmetallic Minerals	5,154,310
Petroleum or Coal Products	2,113,174
Warehouse, Distribution Center and Drayage Movements	1,644,359
Clay, Concrete, Glass, Stone	1,189,986
Food or Kindred Products	662,823

Clay, Concrete, Glass, Stone	1,088,929
Petroleum or Coal Products	1,061,343
Nonmetallic Minerals	944,800
Waste or Scrap Materials	905,663
Warehouse, Distribution Center and Drayage Movements	776,413



TOP COMMODITY by Value, 2018

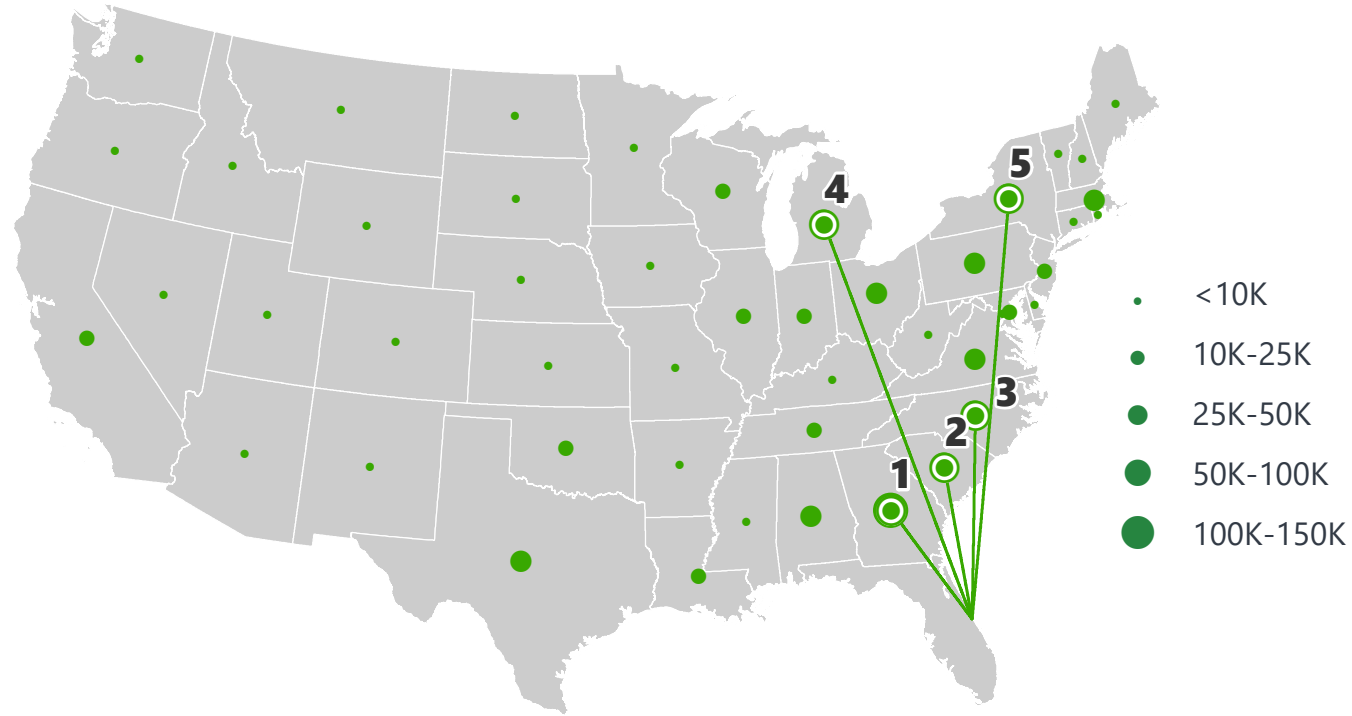


Warehouse, Distribution Center and Drayage Movements	\$ 4,374,837,397
Transportation Equipment	\$ 2,748,622,589
Petroleum or Coal Products	\$ 1,252,337,039
Food or Kindred Products	\$ 788,111,339
Electrical Equipment	\$ 702,875,943

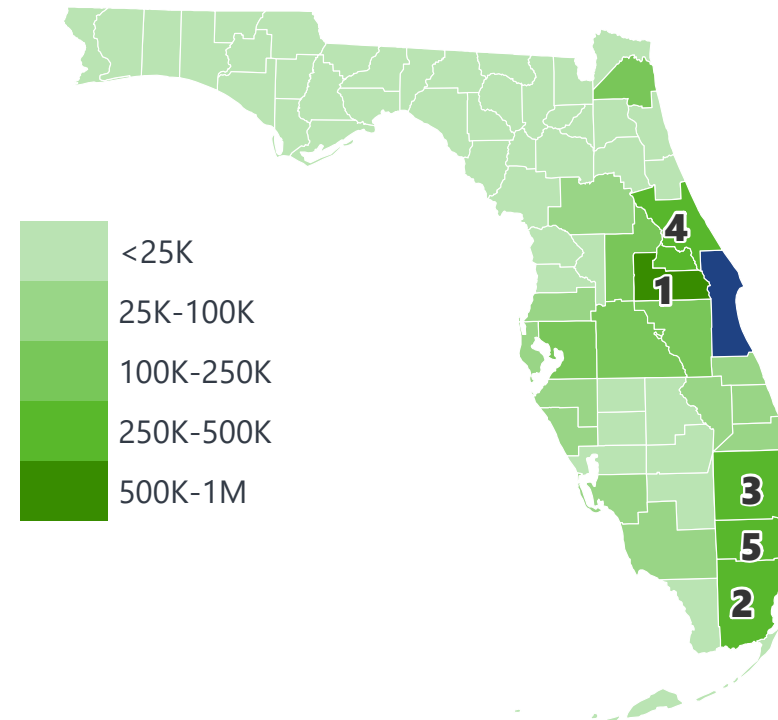
Warehouse, Distribution Center and Drayage Movements	\$ 1,305,488,471
Transportation Equipment	\$ 1,063,817,564
Electrical Equipment	\$ 800,824,478
Petroleum or Coal Products	\$ 459,759,161
Fabricated Metal Products	\$ 312,057,364

BREVARD COUNTY EXPORTS AND IMPORTS

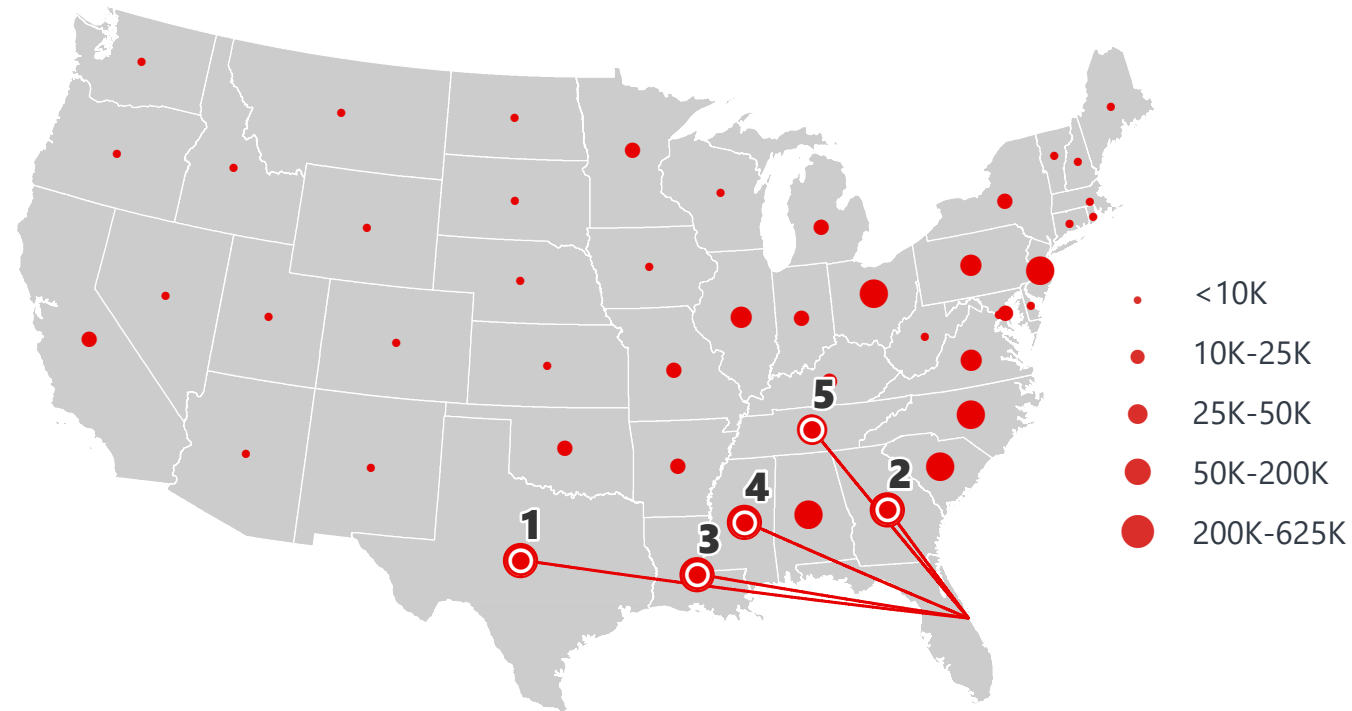
DOMESTIC EXPORTS (TONS)



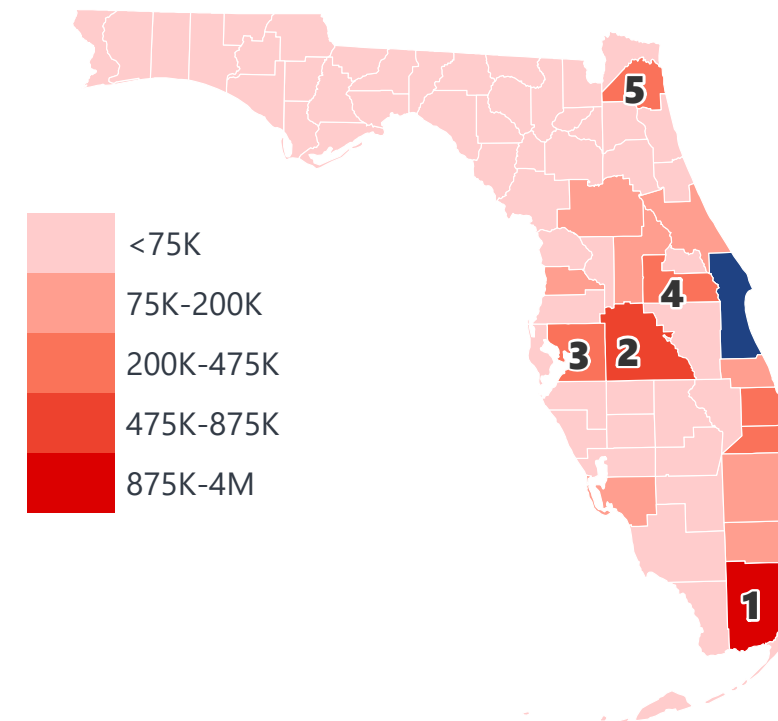
INTRASTATE EXPORTS (TONS)



DOMESTIC IMPORTS (TONS)



INTRASTATE IMPORTS (TONS)



DOMESTIC EXPORTS (TONNAGE)

1	Georgia	150,678
2	South Carolina	84,445
3	North Carolina	66,180
4	Michigan	55,078
5	New York	50,539

INTRASTATE EXPORTS (TONNAGE)

1	Orange	911,781
2	Miami-Dade	463,655
3	Palm Beach	380,414
4	Volusia	354,855
5	Broward	330,291

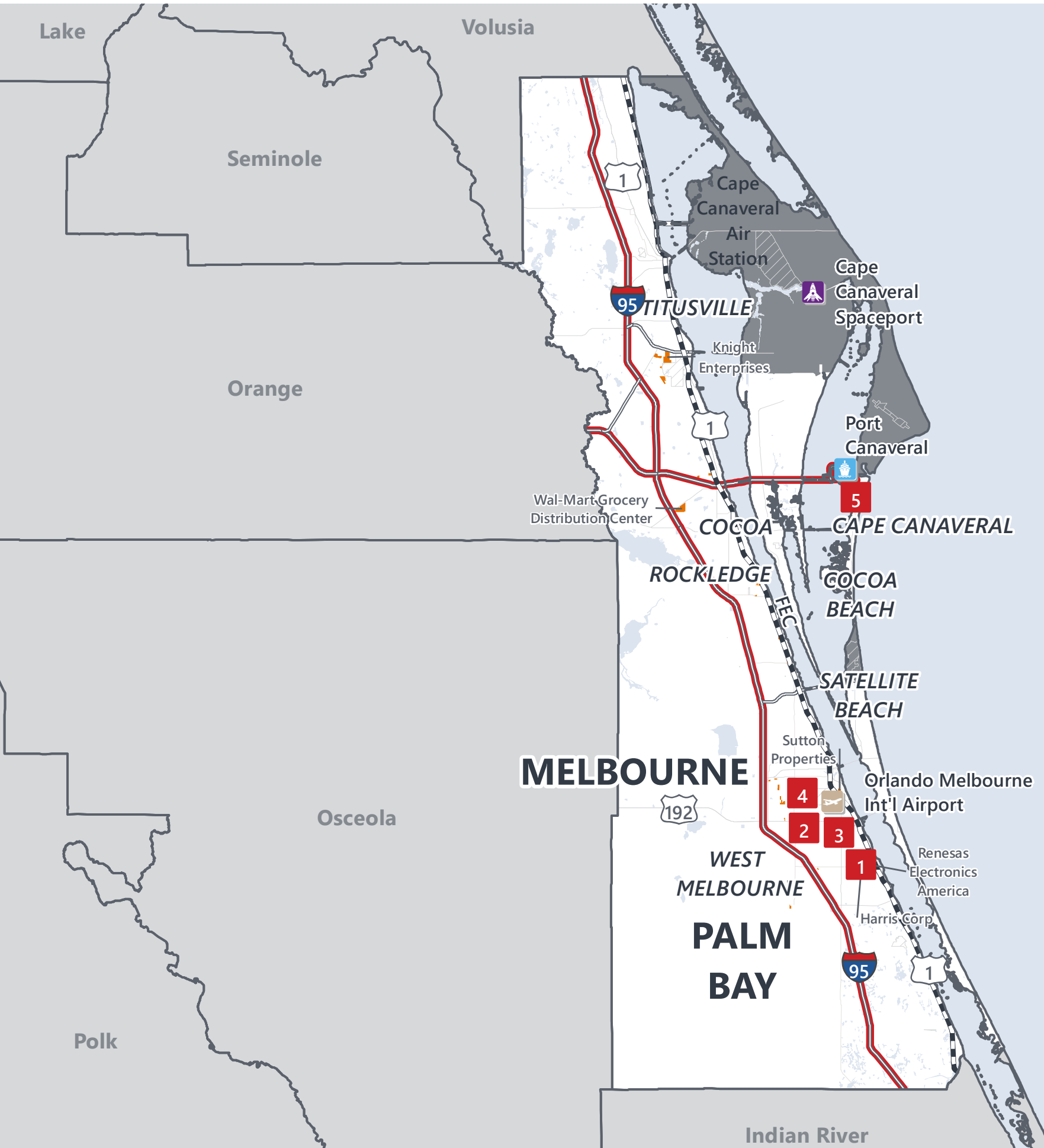
DOMESTIC IMPORTS (TONNAGE)

1	Texas	603,705
2	Georgia	440,681
3	Louisiana	433,854
4	Mississippi	316,818
5	Tennessee	184,613

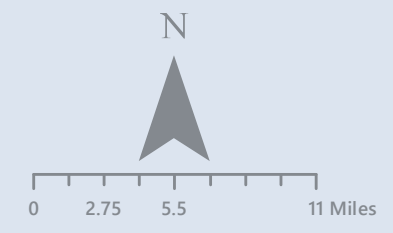
INTRASTATE IMPORTS (TONNAGE)

1	Miami-Dade	3,855,746
2	Polk	875,298
3	Hillsborough	477,856
4	Orange	380,983
5	Duval	298,103

BREVARD COUNTY FREIGHT INFRASTRUCTURE



- SIS Seaport
- SIS Spaceport
- Strategic Growth Airport
- SIS Rail
- SIS Highway
- National Highway Freight Network
- Other Roadways
- Major Freight Parcels
- Aviation Facility
- Military Installation



Major Freight Parcels:
Includes parcels greater than 100K square feet floor area and are related to wholesale, retail, manufacturing, industrial, distribution centers, dairies, feed lots, utilities, mining, oil/gas lands and sewage/wastewater.

LARGEST FREIGHT EMPLOYERS

1	Harris Co.	3K-4K
2	New Rockwell Collins	1K-2K
3	Harris Co.	1K-2K
4	Northrop Grumman	1K-2K
5	Lockheed Martin	700-800

MAJOR FREIGHT LAND USES

33.2 M SQ.FT Floor Area

60.31%	Warehousing and distribution centers
32.82%	Light manufacturing
1.66%	Heavy industrial
1.43%	Utilities
1.40%	Open storage

345.6 M SQ.FT LAND AREA

37.77%	Warehousing and distribution centers
24.18%	Light manufacturing
20.00%	Utilities
6.82%	Open storage
4.06%	Minerals processing and construction material plants

Florida Department of Economic Opportunity, 2018
Florida Department of Revenue, 2019

MAJOR COUNTY COMMODITIES



IMPORTS



TOP COMMODITY by Tonnage, 2018 (relative to Florida)

FL Rank	Commodity	% Florida Share
8	Nonmetallic Minerals	4.29%
8	Warehouse, Distribution Center and Drayage Movements	3.89%
9	Primary Metal Products	3.85%
9	Electrical Equipment	3.81%
8	Machinery	3.41%

EXPORTS



FL Rank	Commodity	% Florida Share
4	Leather or Leather Products	13.11%
2	Ordnance or Accessories	8.81%
5	Electrical Equipment	8.21%
5	Fabricated Metal Products	7.00%
5	Shipping Containers	4.32%

TOP COMMODITY by Value, 2018 (relative to Florida)

FL Rank	Commodity	% Florida Share
7	Warehouse, Distribution Center and Drayage Movements	5.61%
8	Primary Metal Products	4.00%
7	Transportation Equipment	3.74%
7	Machinery	3.18%
8	Nonmetallic Minerals	3.17%

FL Rank	Commodity	% Florida Share
2	Ordnance or Accessories	16.88%
4	Leather or Leather Products	9.41%
7	Fabricated Metal Products	5.69%
6	Electrical Equipment	4.65%
9	Waste or Scrap Materials	2.94%



TRANSPORTATION STATISTICS AND FREIGHT MOVEMENT BY MODE



67.53%
TONNAGE
90.39%
VALUE

994 K | Daily Truck Miles Traveled
1.18 | Planning Time Index
3,581 | Public Roadway Mileage



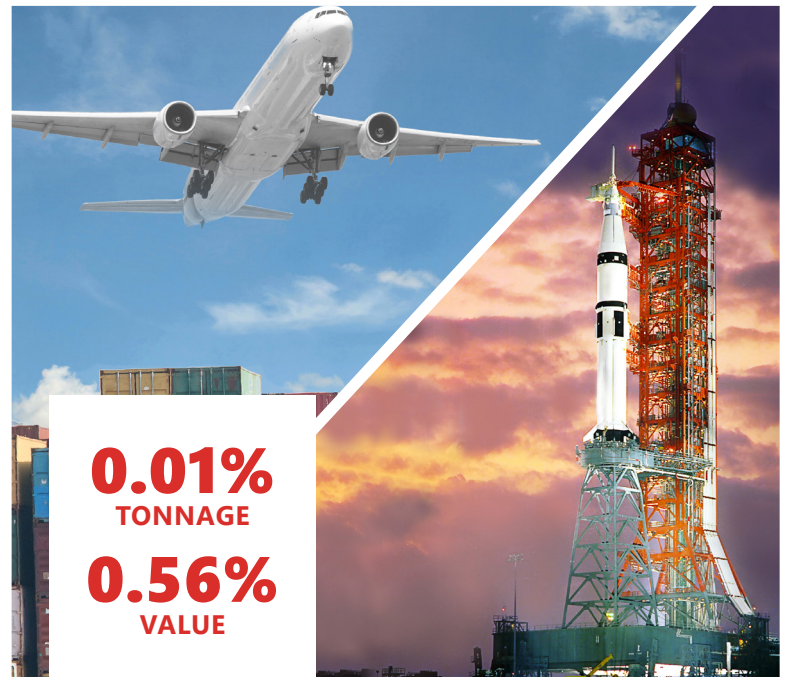
11.86%
TONNAGE
6.22%
VALUE

1 Major Seaport | Port Canaveral



20.60%
TONNAGE
2.82%
VALUE

70.43 | - Class I Mainline Miles
| - Class II Mainline Miles (FEC)
| - Class III Mainline Miles



0.01%
TONNAGE
0.56%
VALUE

1 Major Airport | Melbourne International Airport
1 Active Spaceport | Cape Canaveral Spaceport

FLORIDA HIGHLIGHTS

3rd most populous US State
\$1T Gross Domestic Product
4th Largest US Economy and 17th Largest Economy in World
Nation's 3rd largest workforce
1 in 5 U.S. exporters are located in Florida
\$153B International Trade
1.76M jobs supported by Trade, Transportation and Utilities industry sector
1.25M jobs supported by Leisure and Hospitality industry sector
131M annual visitors

CAPITAL	TALLAHASSEE
AREA (SQ . MILES)	53,624
LARGEST CITY (SIZE)	JACKSONVILLE
POPULATION (2019)	21,208,589
ANNUAL POP GROWTH RATE (2010-2019)	1.4%
EMPLOYMENT (2019)	8,884,065
ANNUAL EMP GROWTH RATE (2010-2019)	2.8%

Bureau of Economic Business Research, Bureau of Labor Statistics

DOMESTIC IMPORTS

1	GEORGIA	\$44B
2	CALIFORNIA	\$29B
3	TEXAS	\$26B
4	ALABAMA	\$18B
5	ILLINOIS	\$18B

INTERNATIONAL IMPORTS

1	CHINA	\$9.5B
2	JAPAN	\$6.5B
3	BRAZIL	\$6.4B
4	MEXICO	\$4.5B
5	CHILE	\$3.7B

DOMESTIC EXPORTS

1	GEORGIA	\$22B
2	TEXAS	\$19B
3	CALIFORNIA	\$15B
4	NORTH CAROLINA	\$12B
5	NEW YORK	\$10B

INTERNATIONAL EXPORTS

1	BRAZIL	\$13.4B
2	COLOMBIA	\$4.2B
3	ARGENTINA	\$3.6B
4	DOMINICAN REPUBLIC	\$3.1B
5	CHILE	\$3B



TRANSPORTATION STATISTICS AND FREIGHT MOVEMENT BY MODE



83%
TONNAGE

71%
VALUE

- 123,104** Public roadway mileage
- 12,130** State Highway System (SHS) mileage
- 30.7M** Daily truck miles traveled on SHS
- 98** Public truck parking facilities



3.5%
TONNAGE

2.9%
VALUE

- 15** Deepwater seaports
- 4.1M** Twenty-foot equivalent units (TEUs)
- 16.8M** Annual cruise passengers



6.7%
TONNAGE

1.8%
VALUE

- 2,936** Miles of roads
- 6.9M** Annual rail passenger traffic



0.1%
TONNAGE

5.4%
VALUE

- 129** Public use airports
- 20** Commercial service airports
- 2** Active spaceports



3.6%
TONNAGE

1%
VALUE

- 5,899** Miles of gas transmission and hazardous liquid pipelines



3.1%
TONNAGE

17.9%
VALUE

Includes shipments by multiple modes and by parcel delivery services, U.S. Postal Service, or couriers (capped at 150 pounds). This category is not limited to containerized or trailer-on-flatcar shipments.

FLORIDA COMMODITY FLOWS (2018-2045)



IMPORTS



WITHIN FL



EXPORTS

	2018	2045	2018	2045	2018	2045
TONNAGE	142M	190M	656M	761M	57M	103M
VALUE	\$321B	\$690B	\$402B	\$844B	\$180B	\$606B

Freight Analysis Framework (FAF) 4.5.1.



Rickey Fitzgerald
 Manager, Freight & Multimodal Operations
 Florida Department of Transportation
 605 Suwannee Street, Tallahassee, FL 32399
 Rickey.Fitzgerald@dot.state.fl.us
 850.414.4702