

# FREIGHT AND LOGISTICS OVERVIEW

FEBRUARY 2021

# BRADFORD COUNTY



*Mission: The department will provide a safe transportation system that ensures the mobility of people and goods, enhances economic prosperity, and preserves the quality of our environment and communities.*

# BRADFORD COUNTY HIGHLIGHTS

**"EVERYTHING IS BETTER IN BRADFORD"**

AREA (SQ . MILES)

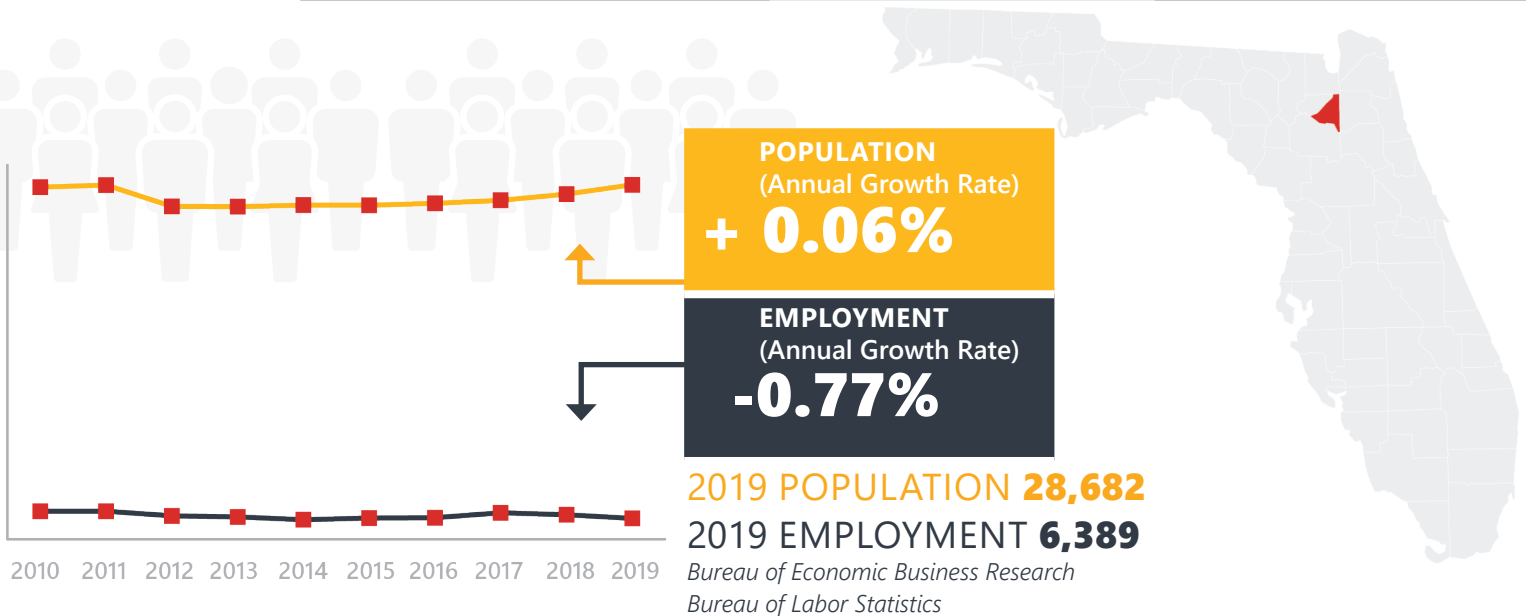
**300**

COUNTY SEAT

**STARKE**

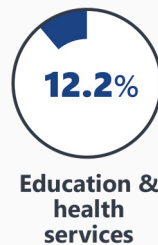
LARGEST CITY (SIZE)

**STARKE**



## LARGEST INDUSTRY SECTORS BY EMPLOYMENT (2019)

*Office of Economic and Demographic Research*



## FASTEST GROWING INDUSTRIES (2010-2019)

<b>TRADE, TRANSPORTATION, AND UTILITIES</b>	<b>160</b>
<b>NATURAL RESOURCES AND MINING</b>	<b>51</b>
<b>CONSTRUCTION</b>	<b>47</b>
<b>FINANCIAL ACTIVITIES</b>	<b>21</b>
<b>OTHER SERVICES</b>	<b>11</b>

**JOBS ADDED**

*Bureau of Labor Statistics*

## DID YOU KNOW?

The 61-mile Starke-Lake Butler bike loop passes through Starke as well as Bradford County.

Florida International Rally and Motorsports Park located near Keystone Heights on over 400 acres is a European-style rally and road racing driver training facility.

Camp Blanding Joint Training Center near Starke is the National Guard's premier training site in Florida.



# COMMODITY FLOW HIGHLIGHTS



## IMPORTS

## WITHIN COUNTY

## EXPORTS

	2018	2045	2018	2045	2018	2045
Tonnage:	0.2 M	0.26 M	535	715	0.46 M	0.54 M
Value:	\$ 0.15 B	\$ 0.21 B	\$ 73.58 K	\$ 72.53 K	\$ 0.57 B	\$ 0.57 B



### TOP COMMODITY *by Tonnage, 2018*



Petroleum or Coal Products	58,533
Clay, Concrete, Glass, Stone	45,732
Warehouse, Distribution Center and Drayage Movements	39,744
Nonmetallic Minerals	29,257
Lumber or Wood Products	9,991

Lumber or Wood Products	135,573
Metallic Ores	103,397
Food or Kindred Products	99,905
Warehouse, Distribution Center and Drayage Movements	47,254
Nonmetallic Minerals	25,760



### TOP COMMODITY *by Value, 2018*

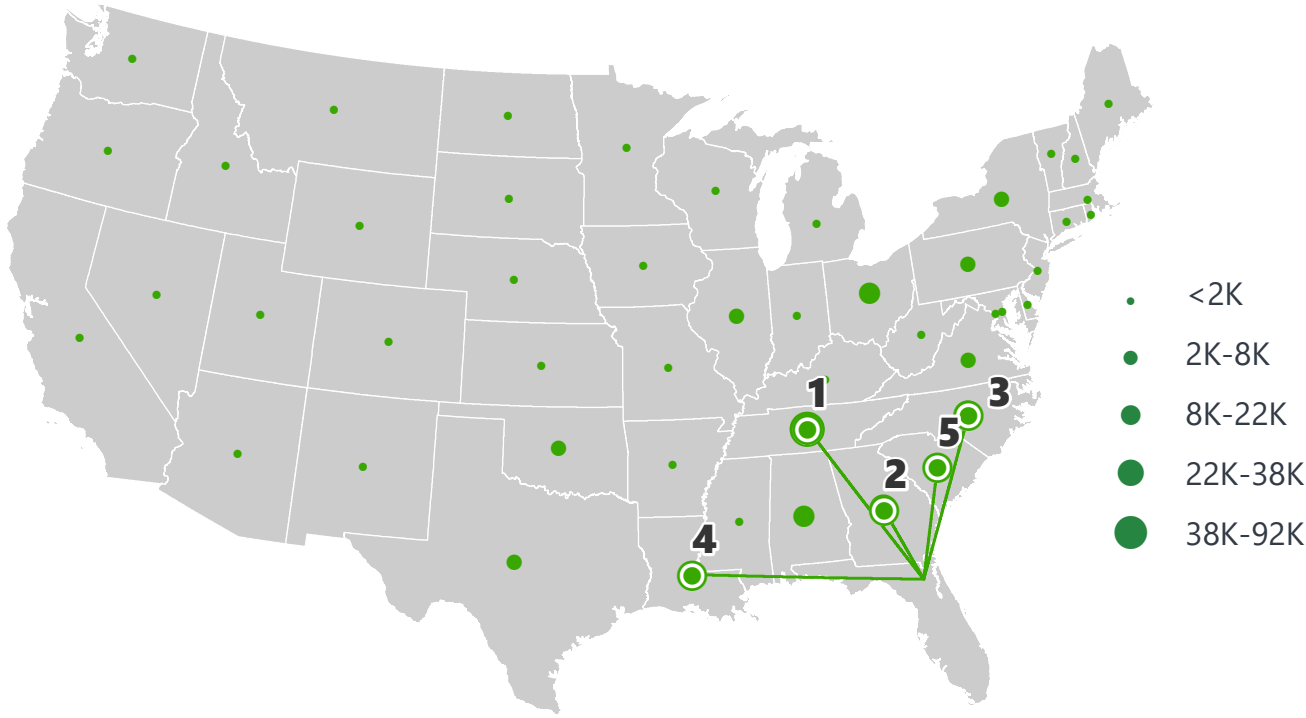


Warehouse, Distribution Center and Drayage Movements	\$ 71,949,475
Petroleum or Coal Products	\$ 31,843,023
Transportation Equipment	\$ 25,721,563
Farm Products	\$ 6,274,766
Clay, Concrete, Glass, Stone	\$ 5,636,546

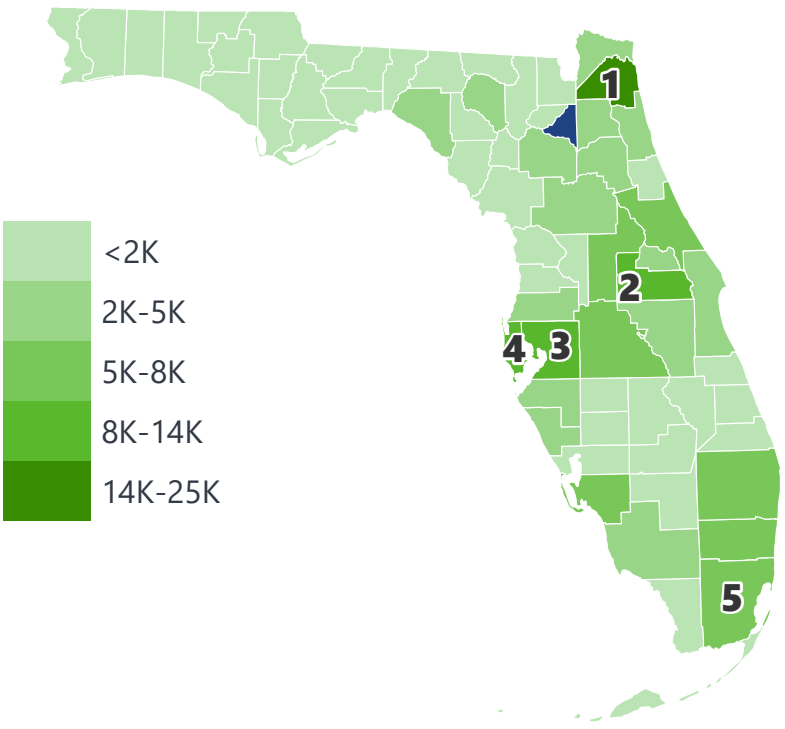
Metallic Ores	\$ 384,434,657
Food or Kindred Products	\$ 76,559,144
Warehouse, Distribution Center and Drayage Movements	\$ 75,804,156
Lumber or Wood Products	\$ 21,602,110
Waste or Scrap Materials	\$ 4,557,638

# BRADFORD COUNTY EXPORTS AND IMPORTS

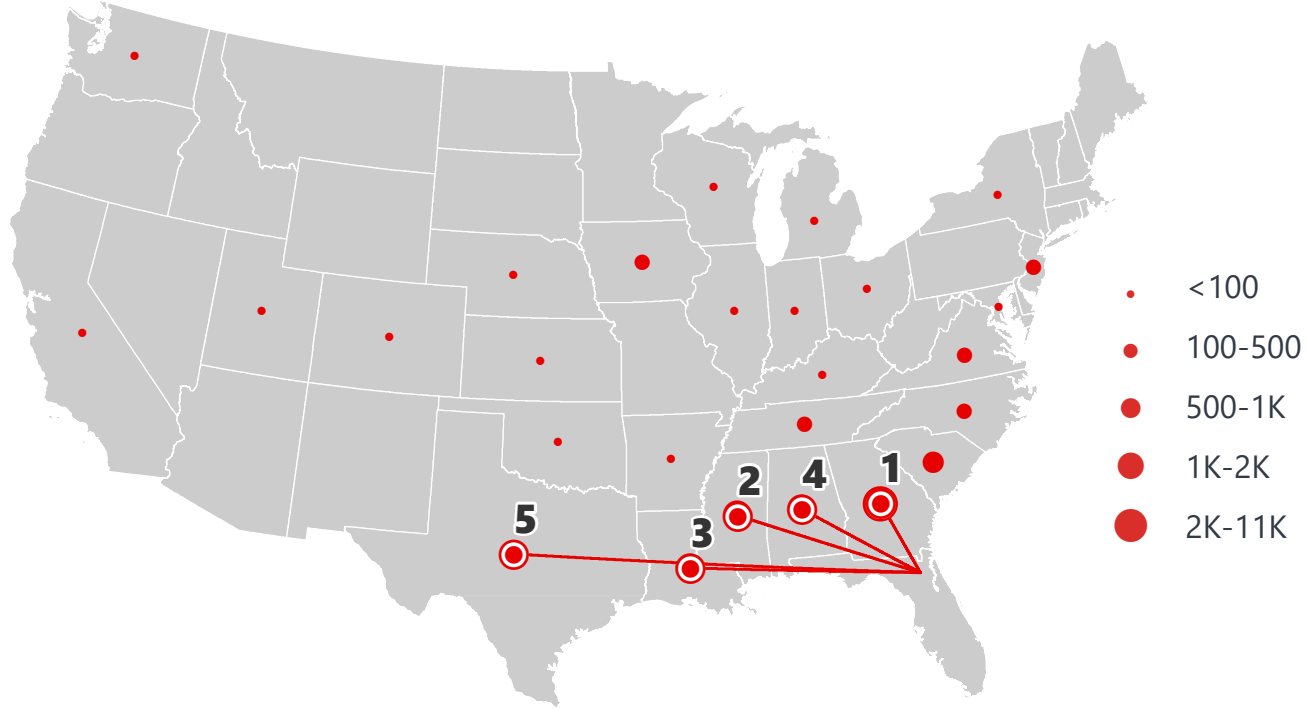
DOMESTIC EXPORTS (TONS)



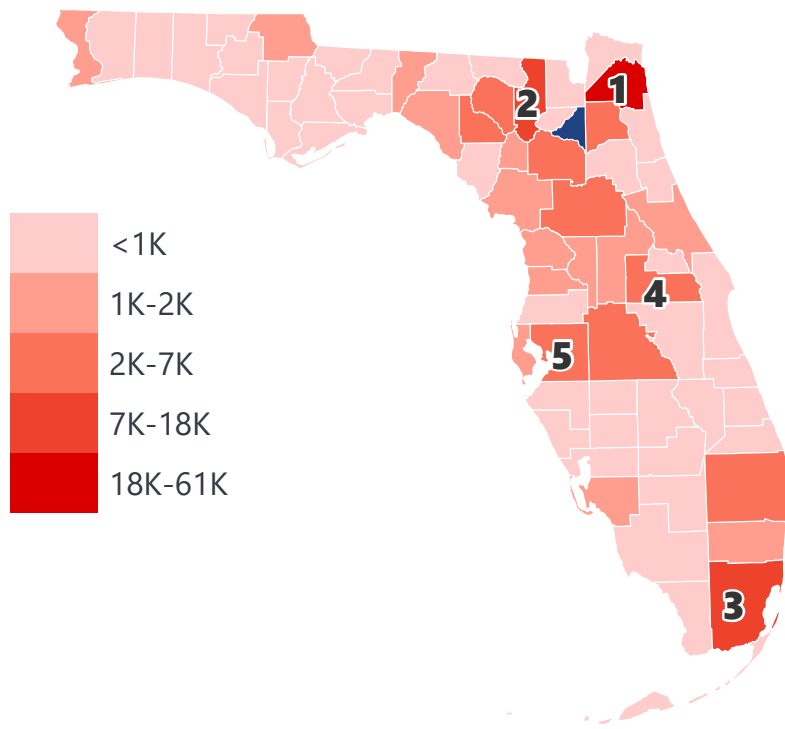
INTRASTATE EXPORTS (TONS)



DOMESTIC IMPORTS (TONS)



INTRASTATE IMPORTS (TONS)



## DOMESTIC EXPORTS (TONNAGE)

1	Tennessee	91,432
2	Georgia	38,142
3	North Carolina	37,324
4	Louisiana	22,304
5	South Carolina	20,474

## INTRASTATE EXPORTS (TONNAGE)

1	Duval	24,605
2	Orange	13,762
3	Hillsborough	11,088
4	Pinellas	9,029
5	Miami-Dade	8,348

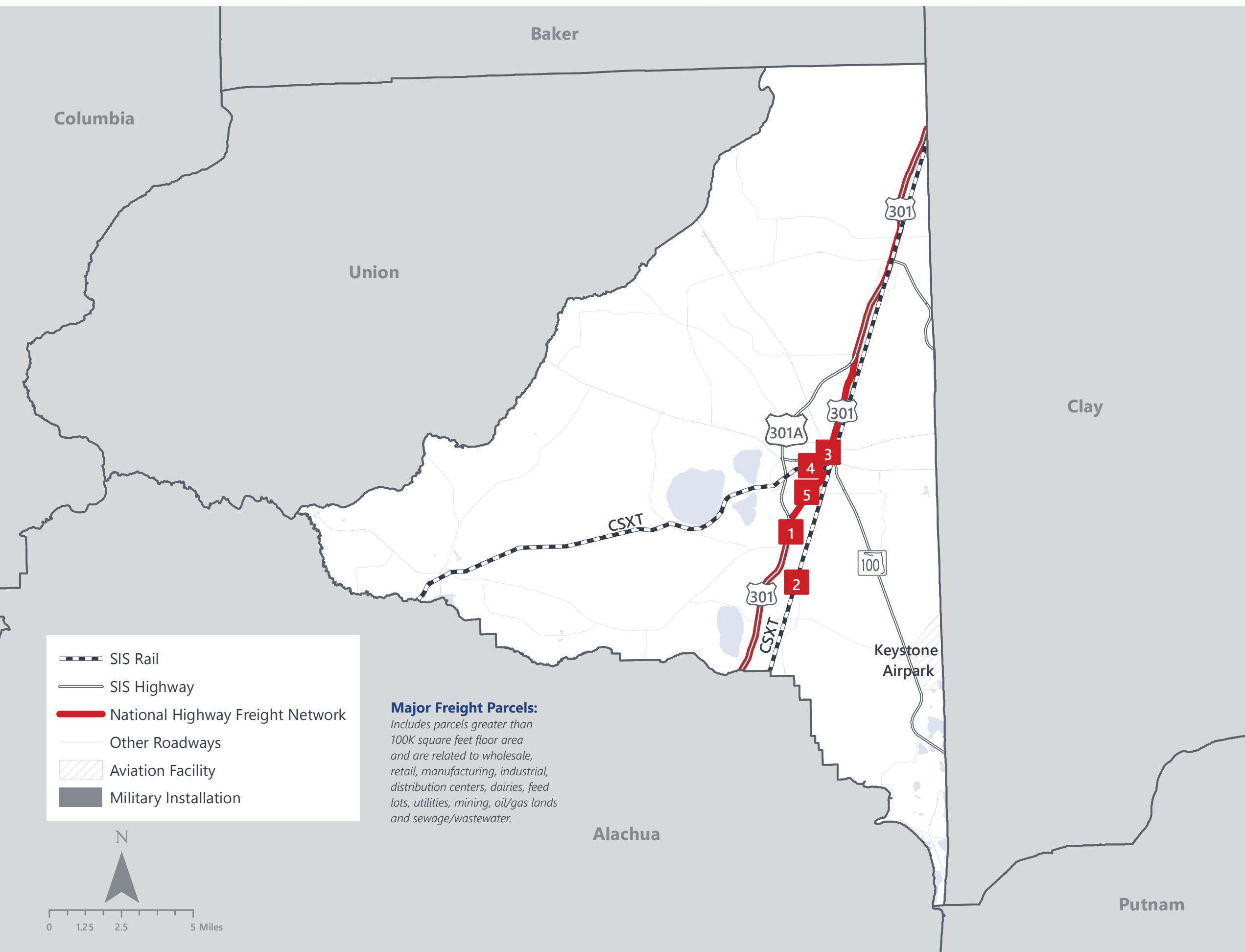
## DOMESTIC IMPORTS (TONNAGE)

1	Georgia	10,323
2	Mississippi	2,387
3	Louisiana	1,619
4	Alabama	1,498
5	Texas	1,049

## INTRASTATE IMPORTS (TONNAGE)

1	Duval	60,545
2	Columbia	17,760
3	Miami-Dade	14,150
4	Orange	6,527
5	Hillsborough	5,558

# BRADFORD COUNTY FREIGHT INFRASTRUCTURE



## LARGEST FREIGHT EMPLOYERS

1	Davis Express	200-300
2	Greasco	50-100
3	D Mosley Trucking	50-100
4	Solenic	0-50
5	Williams Bros Trucking	0-50

## MAJOR FREIGHT LAND USES

### 0.8 M SQ.FT Floor Area

42.56%	Light manufacturing
20.48%	Warehousing and distribution centers
17.56%	Heavy industrial
9.89%	Minerals processing and construction material plants
5.45%	Airports, bus terminals and marine terminals

### 31.9 M SQ.FT LAND AREA

28.70%	Minerals processing and construction material plants
26.10%	Utilities
10.36%	Light manufacturing
8.98%	Sewage disposal and waste land
8.20%	Lumber yards, sawmills, planing mills



# MAJOR COUNTY COMMODITIES



## IMPORTS



### TOP COMMODITY by Tonnage, 2018 (relative to Florida)

FL Rank	Commodity	% Florida Share
52	Clay, Concrete, Glass, Stone	0.11%
49	Warehouse, Distribution Center and Drayage Movements	0.09%
50	Petroleum or Coal Products	0.08%
45	Marine Products	0.07%
57	Lumber or Wood Products	0.07%

## EXPORTS



FL Rank	Commodity	% Florida Share
1	Metallic Ores	99.28%
19	Lumber or Wood Products	1.46%
22	Food or Kindred Products	0.65%
25	Warehouse, Distribution Center and Drayage Movements	0.13%
51	Farm Products	0.13%

### TOP COMMODITY by Value, 2018 (relative to Florida)

FL Rank	Commodity	% Florida Share
50	Warehouse, Distribution Center and Drayage Movements	0.09%
52	Clay, Concrete, Glass, Stone	0.08%
49	Petroleum or Coal Products	0.08%
49	Farm Products	0.07%
45	Marine Products	0.07%

FL Rank	Commodity	% Florida Share
1	Metallic Ores	78.06%
23	Food or Kindred Products	0.50%
44	Lumber or Wood Products	0.43%
27	Warehouse, Distribution Center and Drayage Movements	0.11%
37	Nonmetallic Minerals	0.08%





TRANSPORTATION STATISTICS AND FREIGHT MOVEMENT BY MODE



125 K | Daily Truck Miles Traveled  
- Planning Time Index  
449 | Public Roadway Mileage



50+ Miles | Distance from closest seaport (JAXPORT)



34.71 | Class I Mainline Miles (CSX)  
- Class II Mainline Miles  
- Class III Mainline Miles



25 Miles | Distance from closest airport (Gainesville Regional Airport)

# FLORIDA HIGHLIGHTS

**3rd most populous** US State

**\$1T Gross** Domestic Product

**4th Largest** US Economy and **17th Largest** Economy in World

Nation's **3rd largest** workforce

**1 in 5 U.S. exporters** are located in Florida

**\$153B** International Trade

**1.76M jobs supported** by Trade, Transportation and Utilities industry sector

**1.25M jobs supported** by Leisure and Hospitality industry sector

**131M** annual visitors

CAPITAL **TALLAHASSEE**

AREA (SQ. MILES) **53,624**

LARGEST CITY (SIZE) **JACKSONVILLE**

POPULATION (2019) **21,208,589**

ANNUAL POP GROWTH RATE (2010-2019) **1.4%**

EMPLOYMENT (2019) **8,884,065**

ANNUAL EMP GROWTH RATE (2010-2019) **2.8%**

*Bureau of Economic Business Research,  
Bureau of Labor Statistics*

## DOMESTIC IMPORTS

<b>1</b>	<b>GEORGIA</b>	\$44B
<b>2</b>	<b>CALIFORNIA</b>	\$29B
<b>3</b>	<b>TEXAS</b>	\$26B
<b>4</b>	<b>ALABAMA</b>	\$18B
<b>5</b>	<b>ILLINOIS</b>	\$18B

## DOMESTIC EXPORTS

<b>1</b>	<b>GEORGIA</b>	\$22B
<b>2</b>	<b>TEXAS</b>	\$19B
<b>3</b>	<b>CALIFORNIA</b>	\$15B
<b>4</b>	<b>NORTH CAROLINA</b>	\$12B
<b>5</b>	<b>NEW YORK</b>	\$10B

## INTERNATIONAL IMPORTS

<b>1</b>	<b>CHINA</b>	\$9.5B
<b>2</b>	<b>JAPAN</b>	\$6.5B
<b>3</b>	<b>BRAZIL</b>	\$6.4B
<b>4</b>	<b>MEXICO</b>	\$4.5B
<b>5</b>	<b>CHILE</b>	\$3.7B

## INTERNATIONAL EXPORTS

<b>1</b>	<b>BRAZIL</b>	\$13.4B
<b>2</b>	<b>COLOMBIA</b>	\$4.2B
<b>3</b>	<b>ARGENTINA</b>	\$3.6B
<b>4</b>	<b>DOMINICAN REPUBLIC</b>	\$3.1B
<b>5</b>	<b>CHILE</b>	\$3B



# TRANSPORTATION STATISTICS AND FREIGHT MOVEMENT BY MODE



**83%**  
TONNAGE

**71%**  
VALUE

**123,104** Public roadway mileage  
**12,130** State Highway System (SHS) mileage  
**30.7M** Daily truck miles traveled on SHS  
**98** Public truck parking facilities



**3.5%**  
TONNAGE

**2.9%**  
VALUE

**15** Deepwater seaports  
**4.1M** Twenty-foot equivalent units (TEUs)  
**16.8M** Annual cruise passengers



**6.7%**  
TONNAGE

**1.8%**  
VALUE

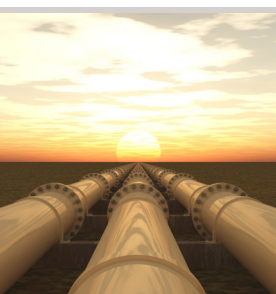
**2,936** Miles of roads  
**6.9M** Annual rail passenger traffic



**0.1%**  
TONNAGE

**5.4%**  
VALUE

**129** Public use airports  
**20** Commercial service airports  
**2** Active spaceports



**3.6%**  
TONNAGE

**1%**  
VALUE

**5,899** Miles of gas transmission and hazardous liquid pipelines



**3.1%**  
TONNAGE

**17.9%**  
VALUE

Includes shipments by multiple modes and by parcel delivery services, U.S. Postal Service, or couriers (capped at 150 pounds). This category is not limited to containerized or trailer-on-flatcar shipments.

# FLORIDA COMMODITY FLOWS (2018-2045)



IMPORTS



WITHIN FL



EXPORTS

	2018	2045	2018	2045	2018	2045
TONNAGE	142M	190M	656M	761M	57M	103M
VALUE	\$321B	\$690B	\$402B	\$844B	\$180B	\$606B

Freight Analysis Framework (FAF) 4.5.1.



**Rickey Fitzgerald**  
 Manager, Freight & Multimodal Operations  
 Florida Department of Transportation  
 605 Suwannee Street, Tallahassee, FL 32399  
 Rickey.Fitzgerald@dot.state.fl.us  
 850.414.4702