

FREIGHT AND LOGISTICS OVERVIEW

FEBRUARY 2021

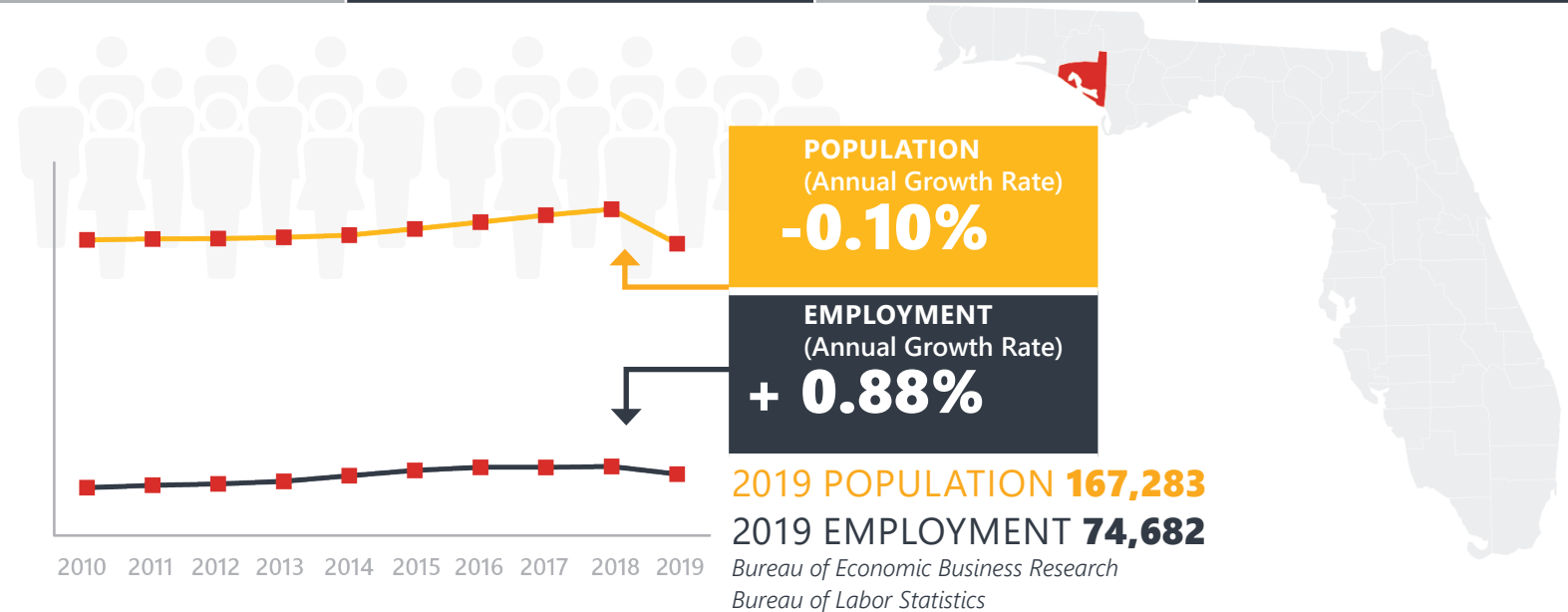
BAY COUNTY



Mission: The department will provide a safe transportation system that ensures the mobility of people and goods, enhances economic prosperity, and preserves the quality of our environment and communities.

BAY COUNTY HIGHLIGHTS

"THE WORLD'S MOST BEAUTIFUL BEACHES"		AREA (SQ . MILES)	1,033
COUNTY SEAT	PANAMA CITY	LARGEST CITY (SIZE)	PANAMA CITY

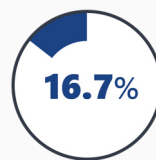


LARGEST INDUSTRY SECTORS BY EMPLOYMENT (2019)

Office of Economic and Demographic Research



Trade,
transportation
& utilities



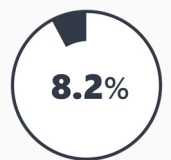
Leisure &
hospitality



Professional &
business
services



Education &
health
services



Construction

FASTEST GROWING INDUSTRIES (2010-2019)

PROFESSIONAL AND BUSINESS SERVICES	JOBS ADDED	2,647
CONSTRUCTION		2,146
TRADE, TRANSPORTATION, AND UTILITIES		1,863
LEISURE AND HOSPITALITY		1,088
EDUCATION AND HEALTH SERVICES		992

Bureau of Labor Statistics

DID YOU KNOW?

Panama City Beach is ranked as one of the United States' top 10 beaches. It is home to four distinct habitats including lake, deciduous forest, sand dunes, and ocean.

Bay County is home to Naval Support Activity Panama City, Tyndall Air Force Base, and U.S. Coast Guard Station Panama City.

The West Bay Sector Plan is a 75,000 acre multi-use master planned development anchored by the Northwest Florida Beaches International Airport.

COMMODITY FLOW HIGHLIGHTS



IMPORTS

WITHIN COUNTY

EXPORTS

	2018	2045	2018	2045	2018	2045
Tonnage:	4.76 M	5.78 M	0.31 M	0.41 M	3.21 M	6.8 M
Value:	\$ 4.23 B	\$ 5.1 B	\$ 0.15 B	\$ 0.19 B	\$ 4.72 B	\$ 9.59 B



TOP COMMODITY by Tonnage, 2018



Lumber or Wood Products	1,633,630
Petroleum or Coal Products	652,947
Nonmetallic Minerals	614,410
Pulp, Paper or Allied Products	339,442
Warehouse, Distribution Center and Drayage Movements	315,886

Pulp, Paper or Allied Products	803,162
Warehouse, Distribution Center and Drayage Movements	717,864
Primary Metal Products	468,701
Waste or Scrap Materials	327,061
Lumber or Wood Products	221,917



TOP COMMODITY by Value, 2018



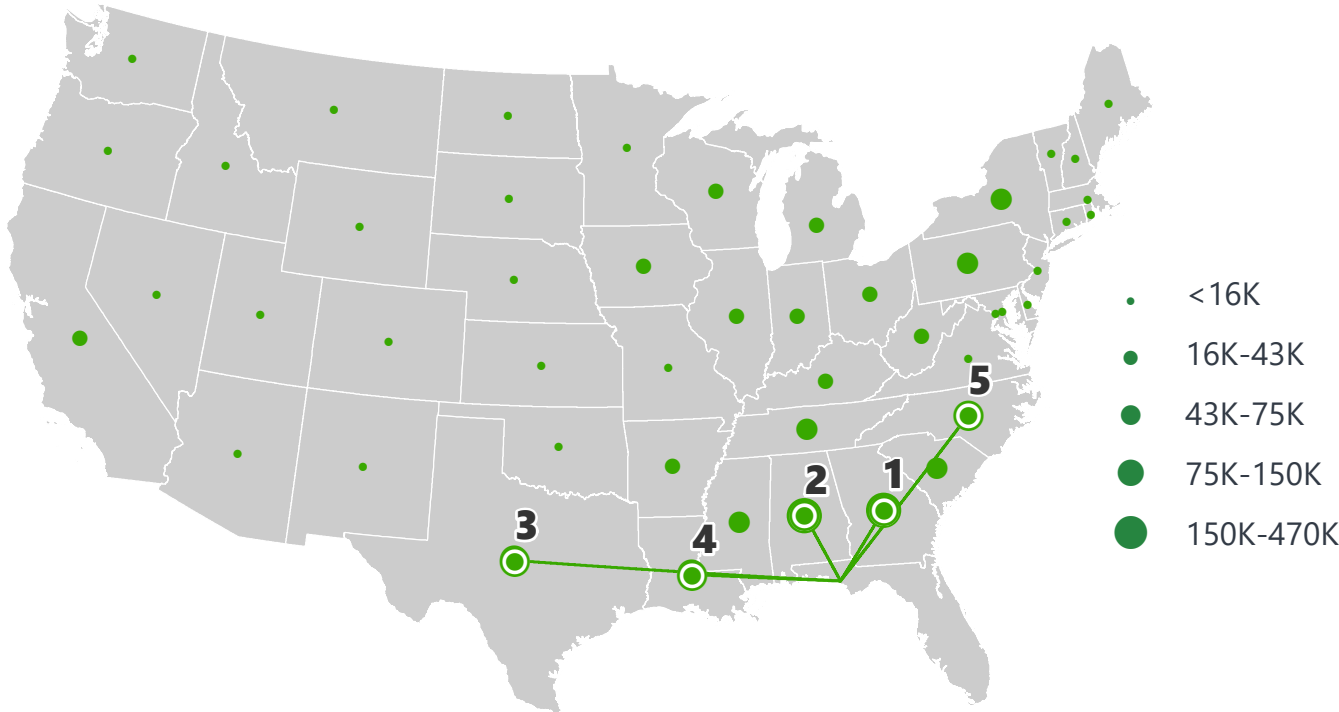
Lumber or Wood Products	\$ 671,901,593
Pulp, Paper or Allied Products	\$ 433,076,923
Petroleum or Coal Products	\$ 410,681,390
Warehouse, Distribution Center and Drayage Movements	\$ 390,071,445
Transportation Equipment	\$ 317,071,031

Primary Metal Products	\$ 2,156,737,040
Warehouse, Distribution Center and Drayage Movements	\$ 881,104,624
Pulp, Paper or Allied Products	\$ 404,894,577
Chemicals or Allied Products	\$ 311,986,739
Machinery	\$ 183,285,402

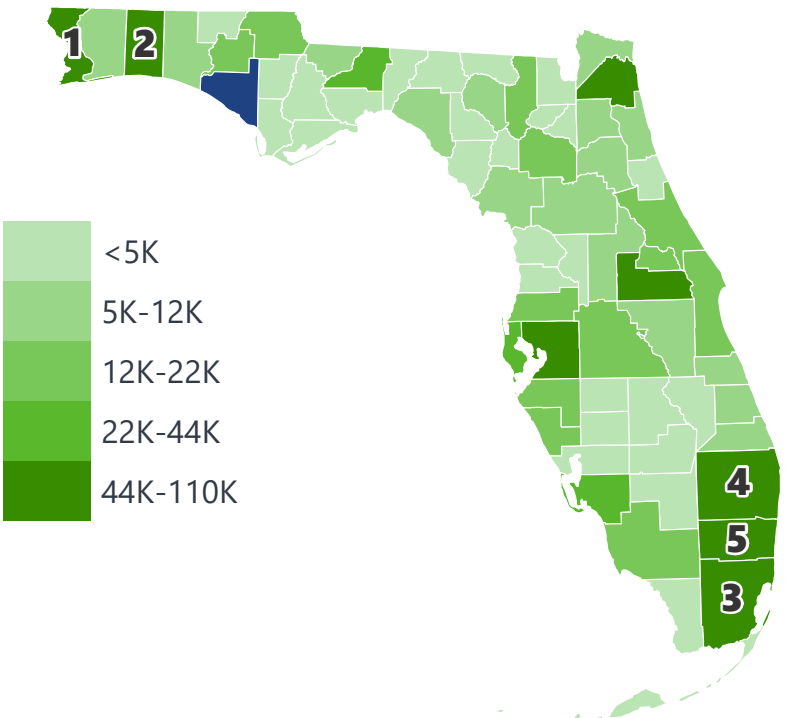
Transearch - Commodity Classification is based on Standard Transportation Commodity Code (STCC) 2 digit codes

BAY COUNTY EXPORTS AND IMPORTS

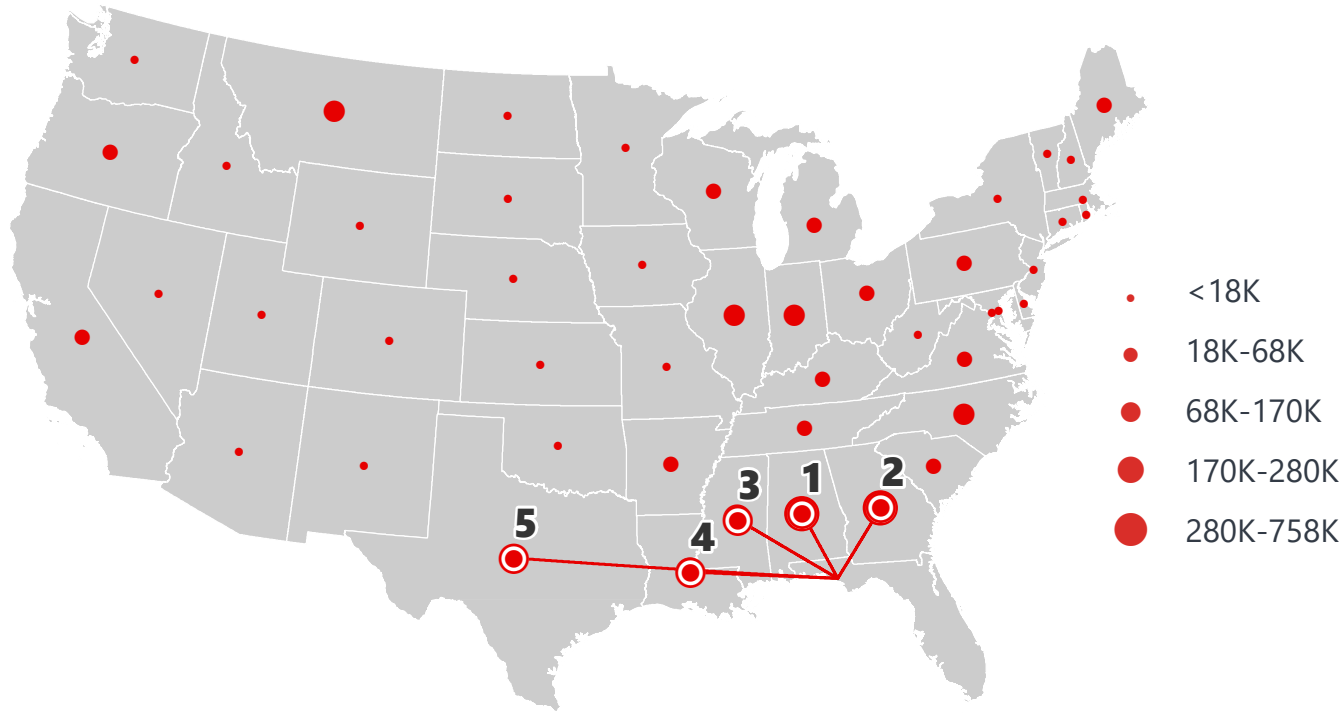
DOMESTIC EXPORTS (TONS)



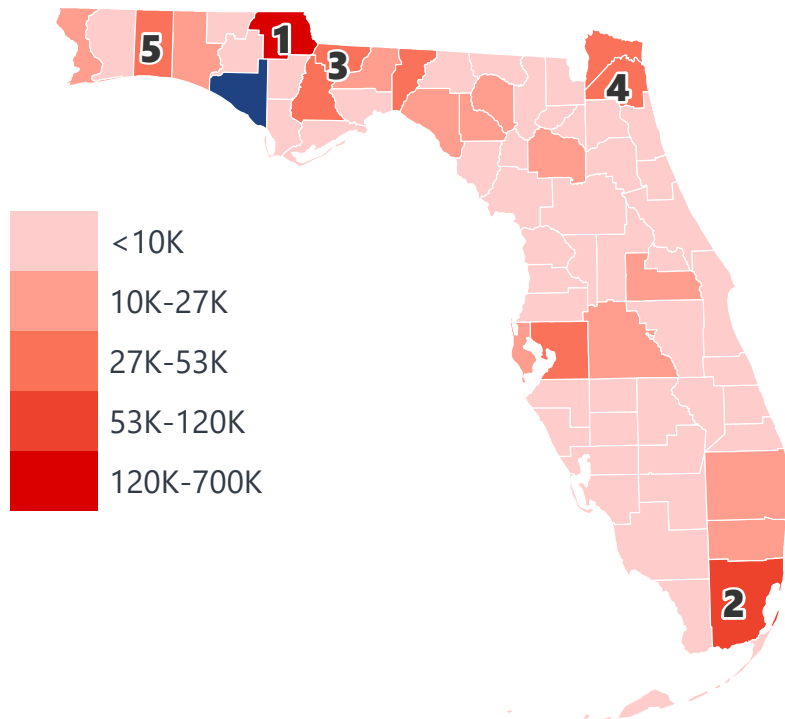
INTRASTATE EXPORTS (TONS)



DOMESTIC IMPORTS (TONS)



INTRASTATE IMPORTS (TONS)



DOMESTIC EXPORTS (TONNAGE)

1	Georgia	469,265
2	Alabama	404,272
3	Texas	150,465
4	Louisiana	105,011
5	North Carolina	74,720

INTRASTATE EXPORTS (TONNAGE)

1	Escambia	109,658
2	Okaloosa	103,435
3	Miami-Dade	91,164
4	Palm Beach	81,751
5	Broward	71,936

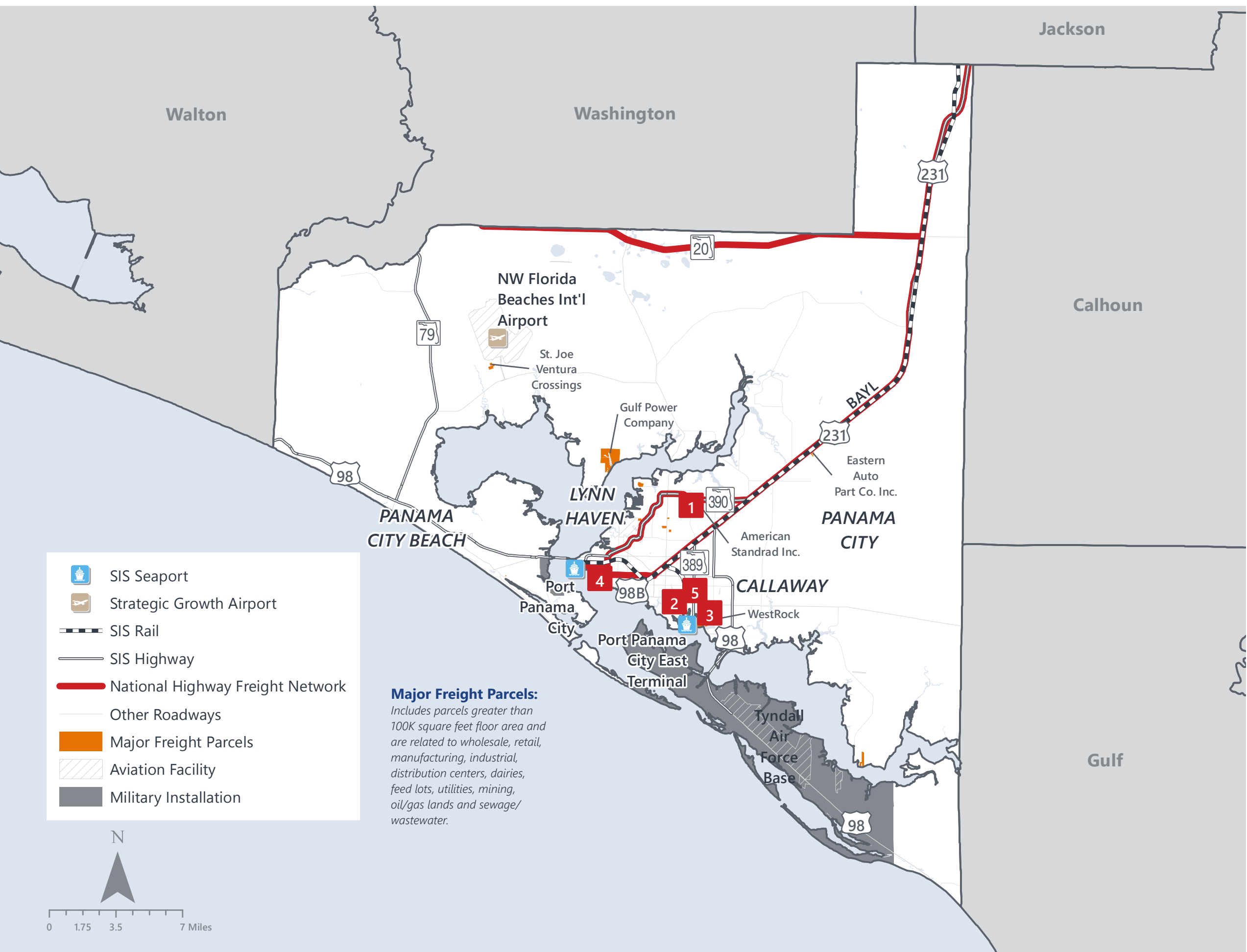
DOMESTIC IMPORTS (TONNAGE)

1	Alabama	757,380
2	Georgia	725,677
3	Mississippi	278,023
4	Louisiana	200,316
5	Texas	171,194

INTRASTATE IMPORTS (TONNAGE)

1	Jackson	698,447
2	Miami-Dade	119,723
3	Gadsden	52,805
4	Duval	42,541
5	Okaloosa	39,486

BAY COUNTY FREIGHT INFRASTRUCTURE



LARGEST FREIGHT EMPLOYERS

1	Trane US Inc.	700-800
2	Eastern Shipbuilding Group	600-700
3	Rock Tenn Services	400-500
4	Berg Steel Pipe	200-300
5	Arizona Chemical Company	100-200

MAJOR FREIGHT LAND USES

15.9 M SQ.FT Floor Area

43.00%	Warehousing and distribution centers
29.41%	Heavy industrial
17.70%	Light manufacturing
6.39%	Utilities
0.88%	Lumber yards, sawmills, planing mills

145.2 M SQ.FT LAND AREA

38.39%	Utilities
25.32%	Warehousing and distribution centers
16.77%	Heavy industrial
11.90%	Light manufacturing
3.34%	Mining lands, petroleum lands, or gas lands

Florida Department of Economic Opportunity, 2018
Florida Department of Revenue, 2019

MAJOR COUNTY COMMODITIES



IMPORTS



TOP COMMODITY by Tonnage, 2018 (relative to Florida)

FL Rank	Commodity	% Florida Share
1	Lumber or Wood Products	12.16%
4	Pulp, Paper or Allied Products	9.42%
8	Primary Metal Products	4.61%
9	Textile Mill Products	3.35%
15	Marine Products	1.60%

EXPORTS



FL Rank	Commodity	% Florida Share
1	Primary Metal Products	33.38%
2	Textile Mill Products	15.72%
3	Pulp, Paper or Allied Products	14.35%
5	Marine Products	2.87%
10	Machinery	2.53%

TOP COMMODITY by Value, 2018 (relative to Florida)

FL Rank	Commodity	% Florida Share
3	Lumber or Wood Products	8.54%
6	Pulp, Paper or Allied Products	8.13%
9	Primary Metal Products	3.74%
8	Textile Mill Products	3.64%
10	Apparel or Related Products	1.89%

FL Rank	Commodity	% Florida Share
1	Primary Metal Products	52.05%
2	Textile Mill Products	13.01%
5	Pulp, Paper or Allied Products	7.23%
5	Marine Products	2.85%
11	Chemicals or Allied Products	1.88%



TRANSPORTATION STATISTICS AND FREIGHT MOVEMENT BY MODE



237 K | Daily Truck Miles Traveled
1.44 | Planning Time Index
1,539 | Public Roadway Mileage



1 Major Seaport | Port of Panama City



- | Class I Mainline Miles
- | Class II Mainline Miles
38.10 | Class III Mainline Miles (BAYL)



1 Major Airport | Northwest Florida Beaches International Airport

FLORIDA HIGHLIGHTS

3rd most populous US State

\$1T Gross Domestic Product

4th Largest US Economy and **17th Largest** Economy in World

Nation's **3rd largest** workforce

1 in 5 U.S. exporters are located in Florida

\$153B International Trade

1.76M jobs supported by Trade, Transportation and Utilities industry sector

1.25M jobs supported by Leisure and Hospitality industry sector

131M annual visitors

CAPITAL **TALLAHASSEE**

AREA
(SQ. MILES) **53,624**

LARGEST
CITY (SIZE) **JACKSONVILLE**

POPULATION
(2019) **21,208,589**

ANNUAL POP
GROWTH RATE
(2010-2019) **1.4%**

EMPLOYMENT
(2019) **8,884,065**

ANNUAL EMP
GROWTH RATE
(2010-2019) **2.8%**

*Bureau of Economic Business Research,
Bureau of Labor Statistics*

DOMESTIC IMPORTS

1	GEORGIA	\$44B
2	CALIFORNIA	\$29B
3	TEXAS	\$26B
4	ALABAMA	\$18B
5	ILLINOIS	\$18B

DOMESTIC EXPORTS

1	GEORGIA	\$22B
2	TEXAS	\$19B
3	CALIFORNIA	\$15B
4	NORTH CAROLINA	\$12B
5	NEW YORK	\$10B

INTERNATIONAL IMPORTS

1	CHINA	\$9.5B
2	JAPAN	\$6.5B
3	BRAZIL	\$6.4B
4	MEXICO	\$4.5B
5	CHILE	\$3.7B

INTERNATIONAL EXPORTS

1	BRAZIL	\$13.4B
2	COLOMBIA	\$4.2B
3	ARGENTINA	\$3.6B
4	DOMINICAN REPUBLIC	\$3.1B
5	CHILE	\$3B

TRANSPORTATION STATISTICS AND FREIGHT MOVEMENT BY MODE



83%
TONNAGE

71%
VALUE

123,104 Public roadway mileage
12,130 State Highway System (SHS) mileage
30.7M Daily truck miles traveled on SHS
98 Public truck parking facilities



3.5%
TONNAGE

2.9%
VALUE

15 Deepwater seaports
4.1M Twenty-foot equivalent units (TEUs)
16.8M Annual cruise passengers



6.7%
TONNAGE

1.8%
VALUE

2,936 Miles of roads
6.9M Annual rail passenger traffic



0.1%
TONNAGE

5.4%
VALUE

129 Public use airports
20 Commercial service airports
2 Active spaceports



3.6%
TONNAGE

1%
VALUE

5,899 Miles of gas transmission and hazardous liquid pipelines



3.1%
TONNAGE

17.9%
VALUE

Includes shipments by multiple modes and by parcel delivery services, U.S. Postal Service, or couriers (capped at 150 pounds). This category is not limited to containerized or trailer-on-flatcar shipments.

FLORIDA COMMODITY FLOWS (2018-2045)



IMPORTS



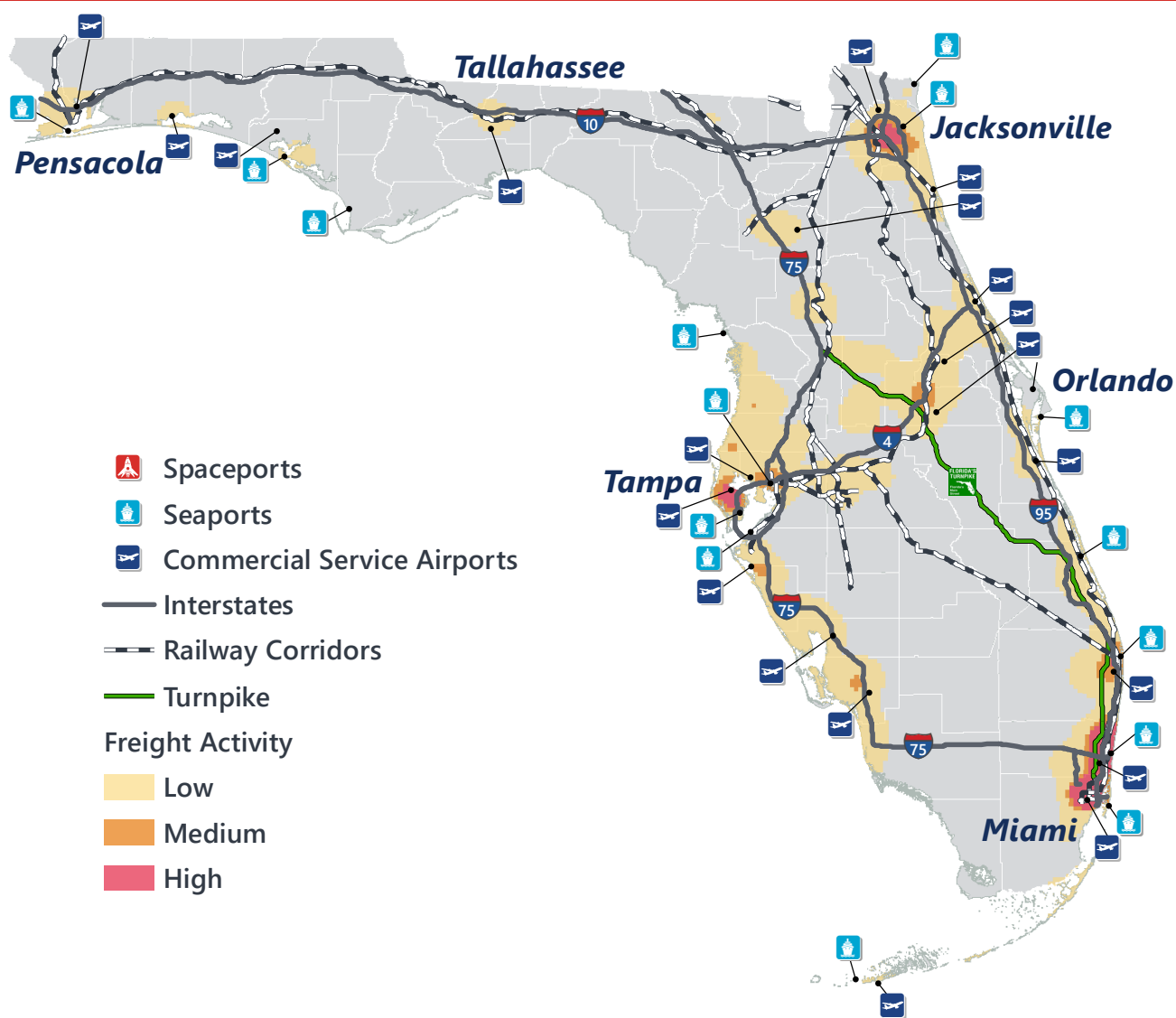
WITHIN FL



EXPORTS

	2018	2045	2018	2045	2018	2045
TONNAGE	142M	190M	656M	761M	57M	103M
VALUE	\$321B	\$690B	\$402B	\$844B	\$180B	\$606B

Freight Analysis Framework (FAF) 4.5.1.



Rickey Fitzgerald
Manager, Freight & Multimodal Operations
 Florida Department of Transportation
 605 Suwannee Street, Tallahassee, FL 32399
 Rickey.Fitzgerald@dot.state.fl.us
 850.414.4702