

FREIGHT AND LOGISTICS OVERVIEW

FEBRUARY 2021

BAKER COUNTY



Mission: The department will provide a safe transportation system that ensures the mobility of people and goods, enhances economic prosperity, and preserves the quality of our environment and communities.

BAKER COUNTY HIGHLIGHTS

"A COUNTRY ATMOSPHERE WITH BIG CITY CONVENIENCE"

AREA (SQ . MILES)

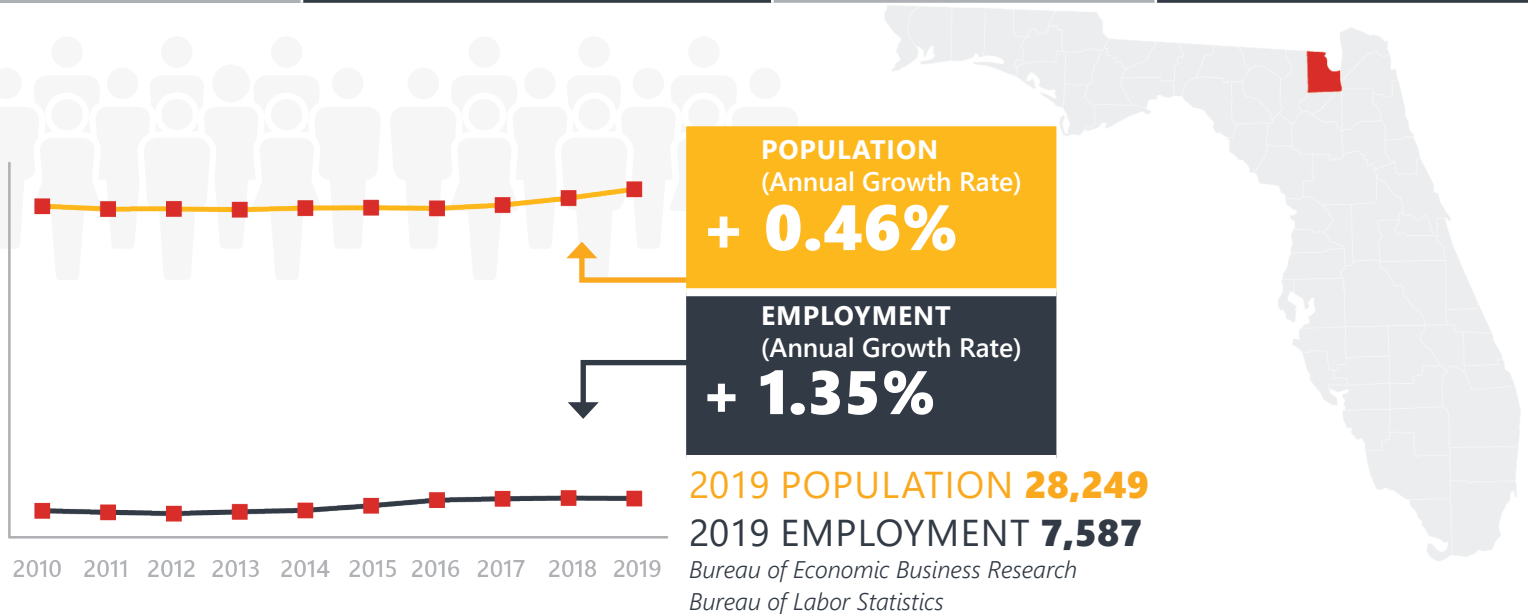
589

COUNTY SEAT

MACCLENNY

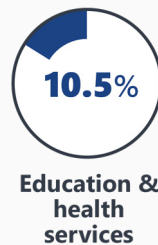
LARGEST CITY (SIZE)

MACCLENNY



LARGEST INDUSTRY SECTORS BY EMPLOYMENT (2019)

Office of Economic and Demographic Research



FASTEST GROWING INDUSTRIES (2010-2019)

TRADE, TRANSPORTATION, AND UTILITIES

531

EDUCATION AND HEALTH SERVICES

160

CONSTRUCTION

132

LEISURE AND HOSPITALITY

108

PROFESSIONAL AND BUSINESS SERVICES

80

JOBS ADDED

Bureau of Labor Statistics

DID YOU KNOW?

Baker County has two main industrial parks, Enterprise East, which offers water and water treatment facilities from the City of Macclenny, and Enterprise West, which offers rail from CSX Transportation.

The county offers an abundance of outdoor activities. Some of the attractions are Shoals Park, Ocean Pond, St. Mary's River and Osceola National Forest.

An average of just 46 people per square mile live within the county lines.

COMMODITY FLOW HIGHLIGHTS



IMPORTS

WITHIN COUNTY

EXPORTS

2018

2045

2018

2045

2018

2045

Tonnage: 194.72 K 359.65 K

117

158

69.41 K

129.04 K

Value: \$ 0.2 B \$ 0.37 B

\$ 143.18 K

\$ 193.92 K

\$ 46.49 M

\$ 57.32 M



TOP COMMODITY by Tonnage, 2018



Petroleum or Coal Products 51,623

Primary Metal Products 48,360

Warehouse, Distribution
Center and Drayage
Movements 29,632

Clay, Concrete, Glass, Stone 23,002

Nonmetallic Minerals 18,823

Lumber or Wood Products 28,680

Farm Products 17,964

Waste or Scrap Materials 12,389

Warehouse, Distribution
Center and Drayage
Movements 3,757

Primary Metal Products 2,503



TOP COMMODITY by Value, 2018



Primary Metal Products \$ 68,988,579

Warehouse, Distribution
Center and Drayage
Movements \$ 37,227,300

Petroleum or Coal Products \$ 29,528,097

Chemicals or Allied Products \$ 28,643,368

Transportation Equipment \$ 16,036,579

Primary Metal Products \$ 9,935,114

Transportation Equipment \$ 7,482,387

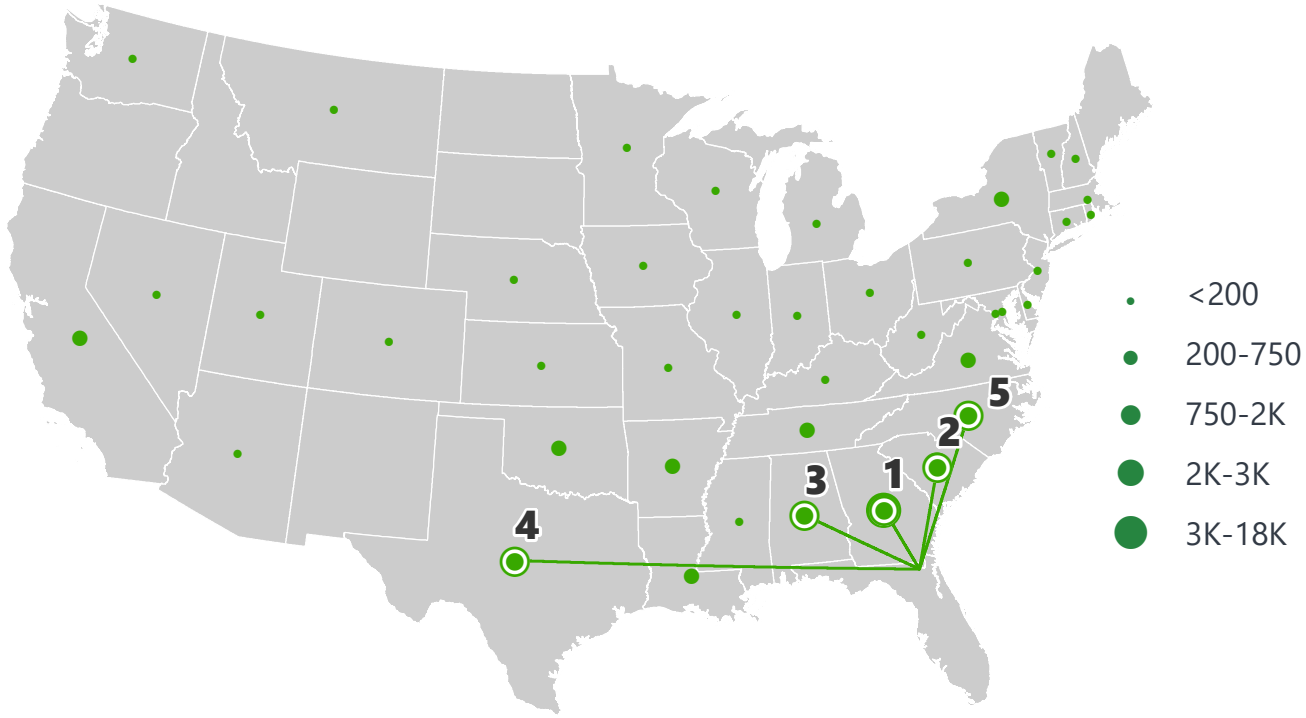
Rubber or Misc. Plastics \$ 7,283,591

Farm Products \$ 7,235,397

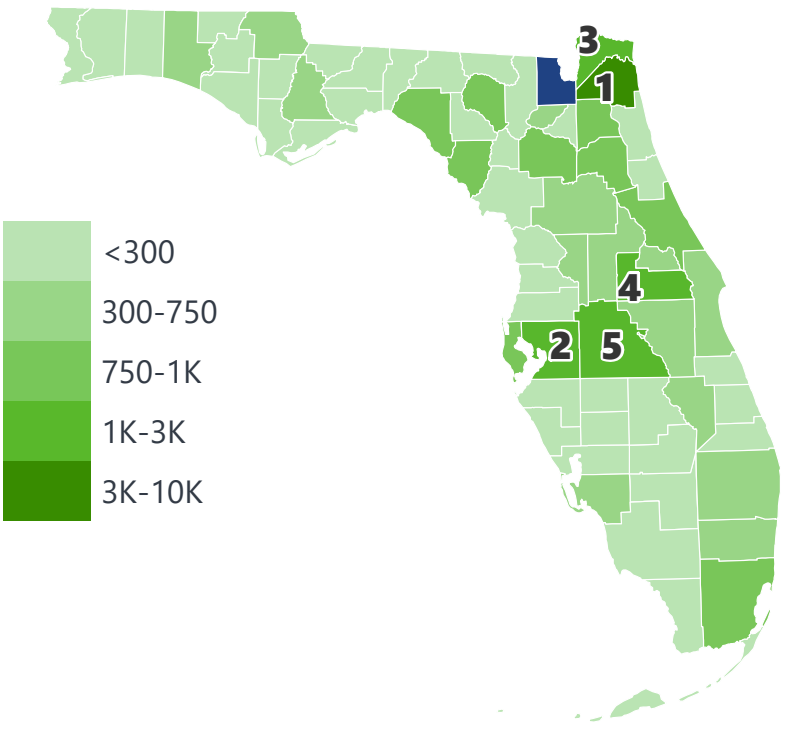
Warehouse, Distribution
Center and Drayage
Movements \$ 5,783,106

BAKER COUNTY EXPORTS AND IMPORTS

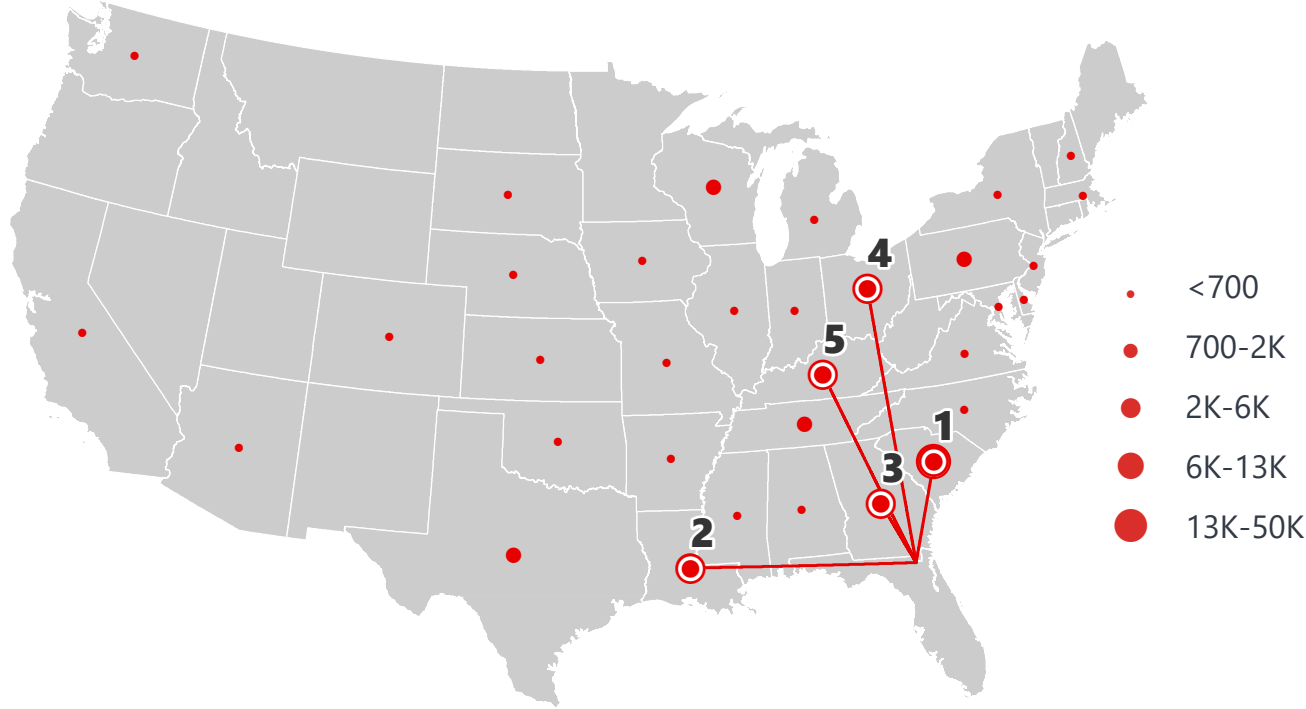
DOMESTIC EXPORTS (TONS)



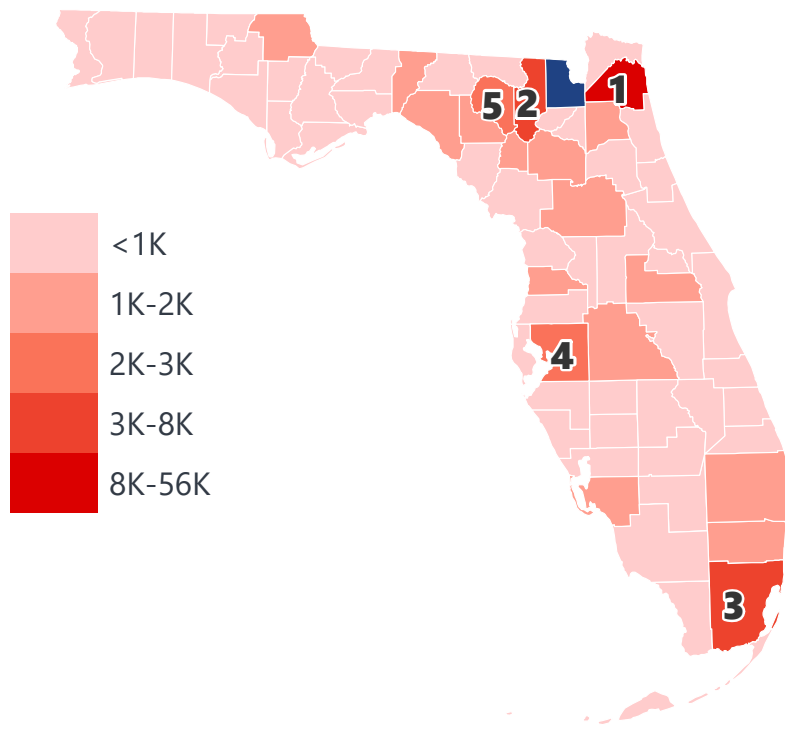
INTRASTATE EXPORTS (TONS)



DOMESTIC IMPORTS (TONS)



INTRASTATE IMPORTS (TONS)



DOMESTIC EXPORTS (TONNAGE)

1	Georgia	17,407
2	South Carolina	2,925
3	Alabama	1,530
4	Texas	1,179
5	North Carolina	1,173

INTRASTATE EXPORTS (TONNAGE)

1	Duval	9,484
2	Hillsborough	3,078
3	Nassau	2,602
4	Orange	2,240
5	Polk	2,086

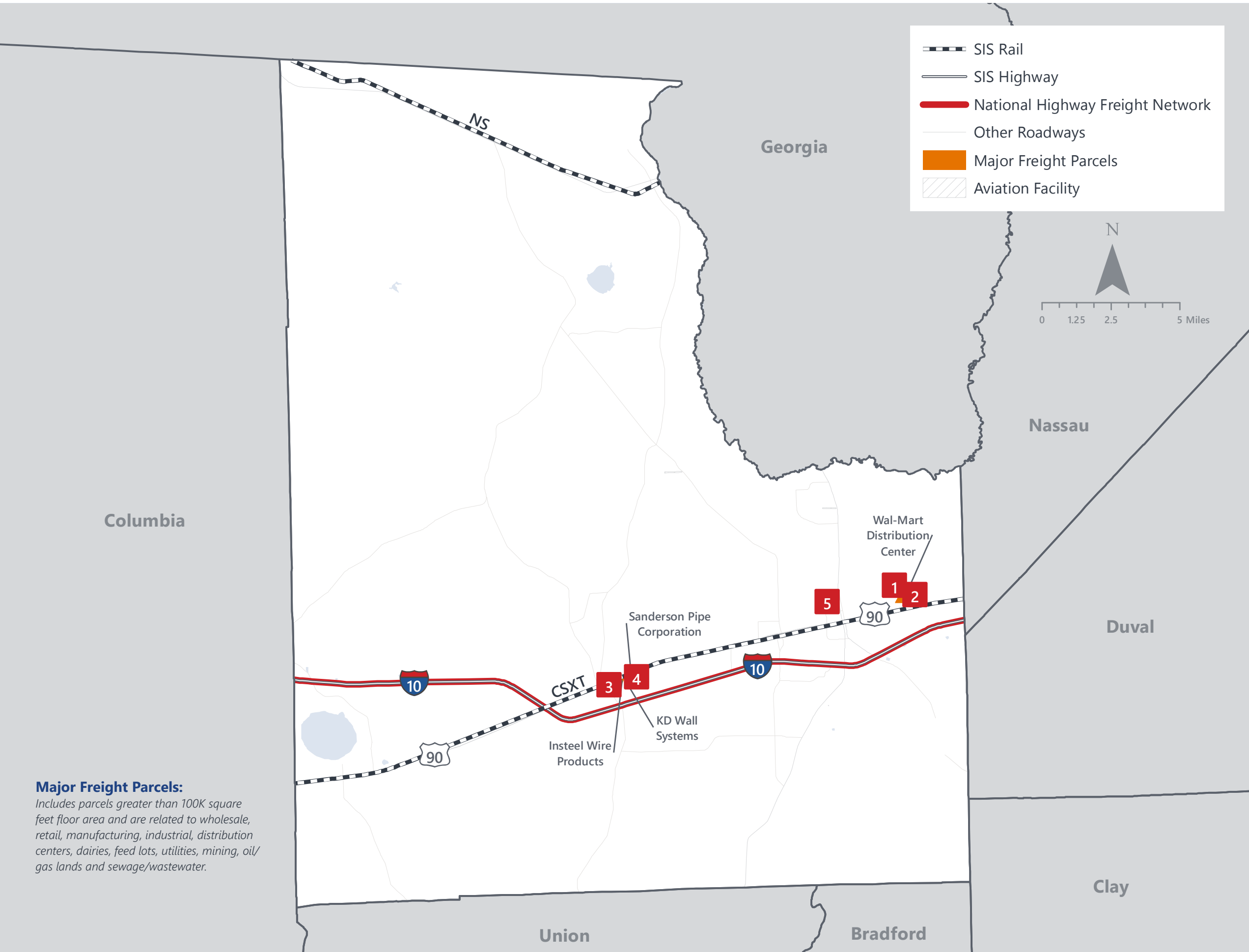
DOMESTIC IMPORTS (TONNAGE)

1	South Carolina	49,673
2	Louisiana	12,868
3	Georgia	5,962
4	Ohio	1,798
5	Kentucky	1,691

INTRASTATE IMPORTS (TONNAGE)

1	Duval	55,251
2	Columbia	8,398
3	Miami-Dade	6,927
4	Hillsborough	3,361
5	Suwannee	3,361

BAKER COUNTY FREIGHT INFRASTRUCTURE



Major Freight Parcels:

Includes parcels greater than 100K square feet floor area and are related to wholesale, retail, manufacturing, industrial, distribution centers, dairies, feed lots, utilities, mining, oil/gas lands and sewage/wastewater.

LARGEST FREIGHT EMPLOYERS

1	Walmart DC	800-900
2	Swift Transportation	100-200
3	Insteel Wire	50-100
4	Sanderson Pipe	50-100
5	Next Step Transport	0-50

MAJOR FREIGHT LAND USES

1.6 M SQ.FT Floor Area

65.24%	Warehousing and distribution centers
33.45%	Light manufacturing
1.02%	Utilities
0.22%	Open storage
0.07%	Minerals processing and construction material plants

232.5 M SQ.FT LAND AREA

93.80%	Mining lands, petroleum lands, or gas lands
3.01%	Warehousing and distribution centers
2.47%	Light manufacturing
0.45%	Sewage disposal and waste land
0.21%	Utilities

MAJOR COUNTY COMMODITIES



IMPORTS



TOP COMMODITY by Tonnage, 2018 (relative to Florida)

FL Rank	Commodity	% Florida Share
19	Primary Metal Products	1.51%
44	Chemicals or Allied Products	0.08%
51	Petroleum or Coal Products	0.07%
54	Warehouse, Distribution Center and Drayage Movements	0.07%
55	Clay, Concrete, Glass, Stone	0.06%

EXPORTS



FL Rank	Commodity	% Florida Share
53	Lumber or Wood Products	0.31%
17	Primary Metal Products	0.18%
31	Rubber or Misc. Plastics	0.17%
52	Farm Products	0.13%
57	Waste or Scrap Materials	0.05%

TOP COMMODITY by Value, 2018 (relative to Florida)

FL Rank	Commodity	% Florida Share
20	Primary Metal Products	1.03%
40	Chemicals or Allied Products	0.10%
50	Petroleum or Coal Products	0.07%
47	Marine Products	0.06%
43	Leather or Leather Products	0.05%

FL Rank	Commodity	% Florida Share
16	Primary Metal Products	0.24%
30	Rubber or Misc. Plastics	0.15%
58	Lumber or Wood Products	0.10%
50	Farm Products	0.08%
58	Waste or Scrap Materials	0.04%



TRANSPORTATION STATISTICS AND FREIGHT MOVEMENT BY MODE



278 K | Daily Truck Miles Traveled
1.17 | Planning Time Index
1,035 | Public Roadway Mileage



50 Miles | Distance from closest seaport (JAXPORT)



39.90 | Class I Mainline Miles (CSX, NS)
- Class II Mainline Miles
- Class III Mainline Miles



55 Miles | Distance from closest airport (Jacksonville International Airport)

FLORIDA HIGHLIGHTS

3rd most populous US State

\$1T Gross Domestic Product

4th Largest US Economy and **17th Largest** Economy in World

Nation's **3rd largest** workforce

1 in 5 U.S. exporters are located in Florida

\$153B International Trade

1.76M jobs supported by Trade, Transportation and Utilities industry sector

1.25M jobs supported by Leisure and Hospitality industry sector

131M annual visitors

CAPITAL **TALLAHASSEE**

AREA (SQ. MILES) **53,624**

LARGEST CITY (SIZE) **JACKSONVILLE**

POPULATION (2019) **21,208,589**

ANNUAL POP GROWTH RATE (2010-2019) **1.4%**

EMPLOYMENT (2019) **8,884,065**

ANNUAL EMP GROWTH RATE (2010-2019) **2.8%**

*Bureau of Economic Business Research,
Bureau of Labor Statistics*

DOMESTIC IMPORTS

1	GEORGIA	\$44B
2	CALIFORNIA	\$29B
3	TEXAS	\$26B
4	ALABAMA	\$18B
5	ILLINOIS	\$18B

DOMESTIC EXPORTS

1	GEORGIA	\$22B
2	TEXAS	\$19B
3	CALIFORNIA	\$15B
4	NORTH CAROLINA	\$12B
5	NEW YORK	\$10B

INTERNATIONAL IMPORTS

1	CHINA	\$9.5B
2	JAPAN	\$6.5B
3	BRAZIL	\$6.4B
4	MEXICO	\$4.5B
5	CHILE	\$3.7B

INTERNATIONAL EXPORTS

1	BRAZIL	\$13.4B
2	COLOMBIA	\$4.2B
3	ARGENTINA	\$3.6B
4	DOMINICAN REPUBLIC	\$3.1B
5	CHILE	\$3B

TRANSPORTATION STATISTICS AND FREIGHT MOVEMENT BY MODE



83%
TONNAGE

71%
VALUE

123,104 Public roadway mileage
12,130 State Highway System (SHS) mileage
30.7M Daily truck miles traveled on SHS
98 Public truck parking facilities



3.5%
TONNAGE

2.9%
VALUE

15 Deepwater seaports
4.1M Twenty-foot equivalent units (TEUs)
16.8M Annual cruise passengers



6.7%
TONNAGE

1.8%
VALUE

2,936 Miles of roads
6.9M Annual rail passenger traffic



0.1%
TONNAGE

5.4%
VALUE

129 Public use airports
20 Commercial service airports
2 Active spaceports



3.6%
TONNAGE

1%
VALUE

5,899 Miles of gas transmission and hazardous liquid pipelines



3.1%
TONNAGE

17.9%
VALUE

Includes shipments by multiple modes and by parcel delivery services, U.S. Postal Service, or couriers (capped at 150 pounds). This category is not limited to containerized or trailer-on-flatcar shipments.

FLORIDA COMMODITY FLOWS (2018-2045)



IMPORTS



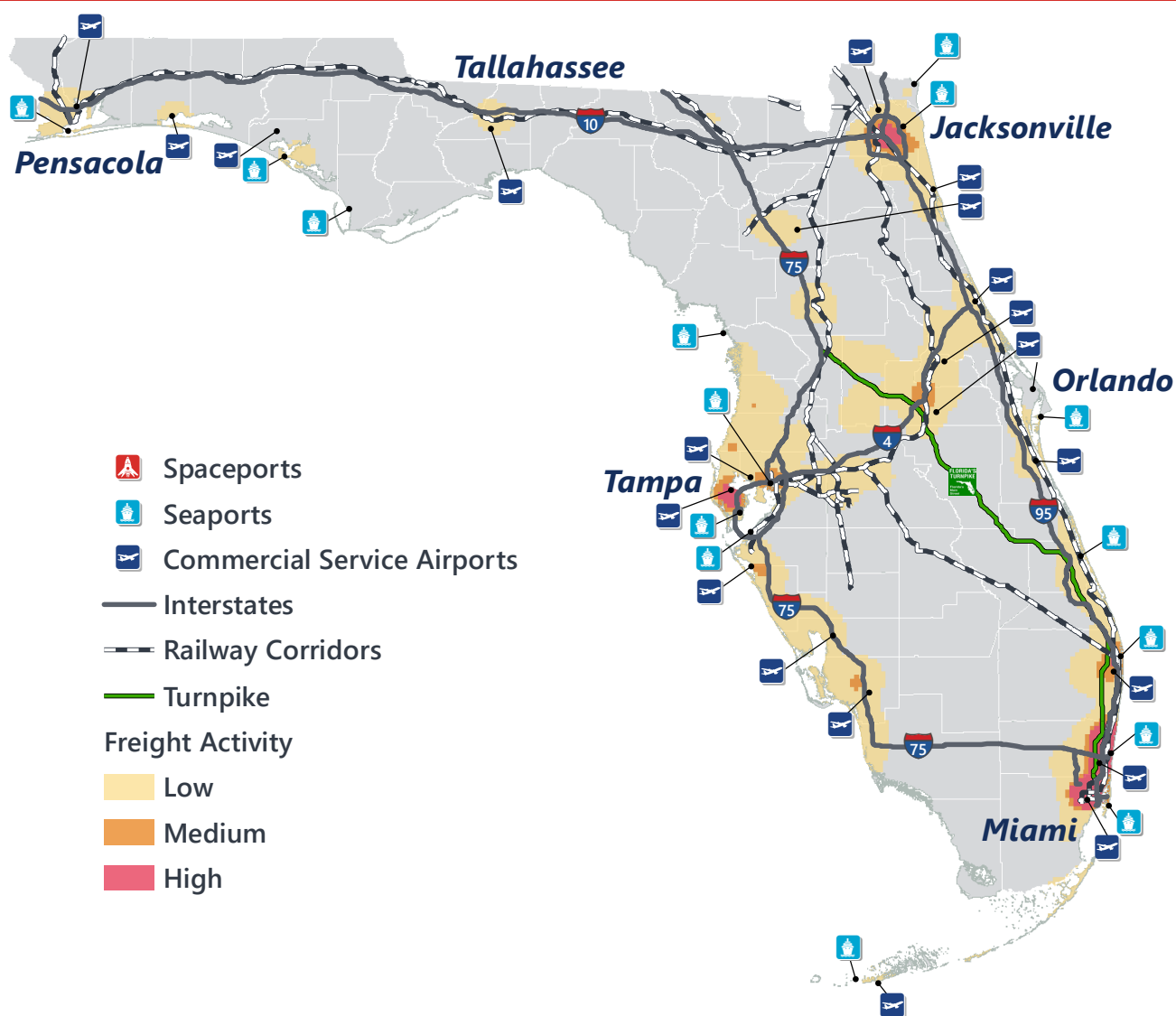
WITHIN FL



EXPORTS

	2018	2045	2018	2045	2018	2045
TONNAGE	142M	190M	656M	761M	57M	103M
VALUE	\$321B	\$690B	\$402B	\$844B	\$180B	\$606B

Freight Analysis Framework (FAF) 4.5.1.



Rickey Fitzgerald
 Manager, Freight & Multimodal Operations
 Florida Department of Transportation
 605 Suwannee Street, Tallahassee, FL 32399
 Rickey.Fitzgerald@dot.state.fl.us
 850.414.4702