

FREIGHT AND LOGISTICS OVERVIEW

FEBRUARY 2021

ALACHUA COUNTY



Mission: The department will provide a safe transportation system that ensures the mobility of people and goods, enhances economic prosperity, and preserves the quality of our environment and communities.

ALACHUA COUNTY HIGHLIGHTS

"WHERE NATURE AND CULTURE MEET"

AREA (SQ. MILES)

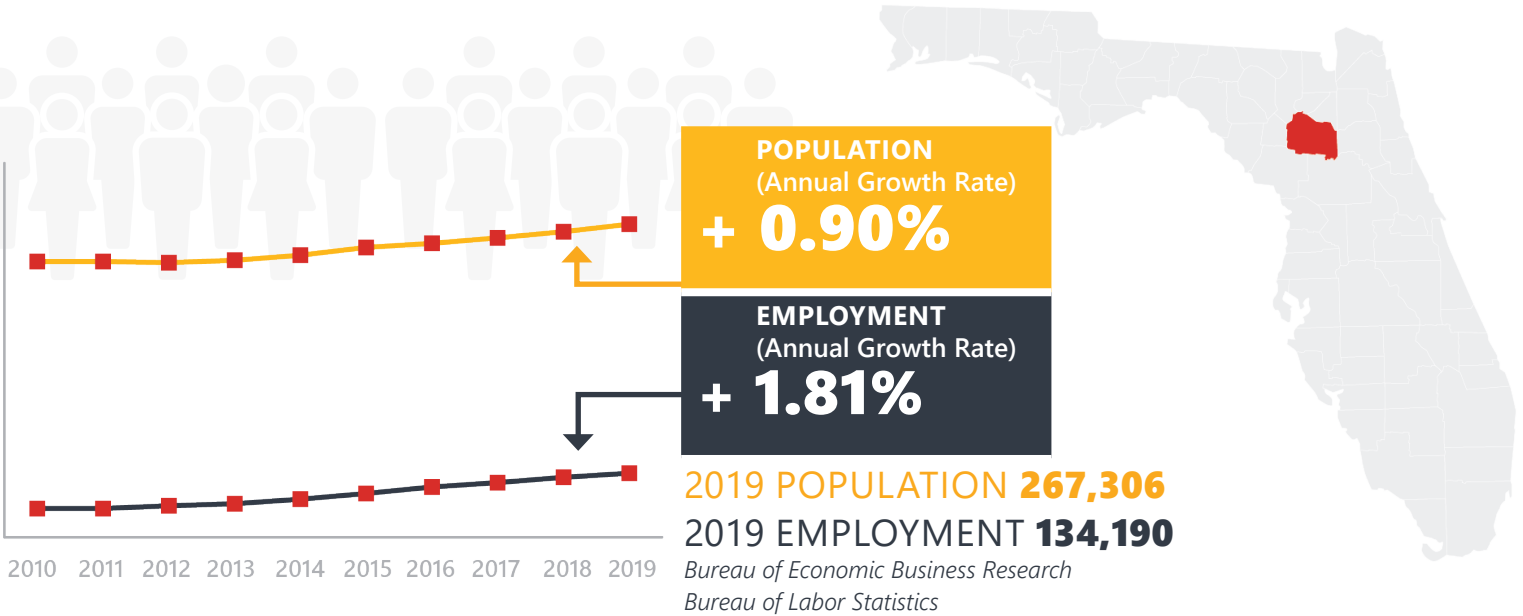
969

COUNTY SEAT

GAINESVILLE

LARGEST CITY (SIZE)

GAINESVILLE

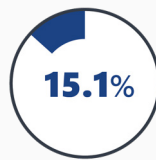


LARGEST INDUSTRY SECTORS BY EMPLOYMENT (2019)

Office of Economic and Demographic Research



Education & health services



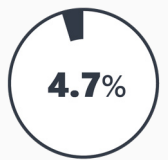
Trade, transportation & utilities



Leisure & hospitality



Professional & business services



Financial activities

FASTEST GROWING INDUSTRIES (2010-2019)

EDUCATION AND HEALTH SERVICES	JOBS ADDED	5,234
PROFESSIONAL AND BUSINESS SERVICES		3,906
TRADE, TRANSPORTATION, AND UTILITIES		3,056
LEISURE AND HOSPITALITY		2,930
CONSTRUCTION		1,690

Bureau of Labor Statistics

DID YOU KNOW?

Gainesville is home to Florida's oldest university - the University of Florida.

The county is home to unique state parks such as Paynes Prairie, San Felasco Hammock Preserve and Devil's Millhopper.

The world's most popular sports drink, Gatorade, is one of the hundreds of commercial patents resulting from the University of Florida research.

COMMODITY FLOW HIGHLIGHTS



IMPORTS

WITHIN COUNTY

EXPORTS

2018

2045

2018

2045

2018

2045

Tonnage:	3.88 M	4.76 M	204.81 K	238.90 K	3.34 M	5.22 M
Value:	\$ 2.92 B	\$ 4.15 B	\$ 69.12 M	\$ 79.43 M	\$ 1.36 B	\$ 1.73 B



TOP COMMODITY by Tonnage, 2018



Petroleum or Coal Products	756,140
Nonmetallic Minerals	598,092
Warehouse, Distribution Center and Drayage Movements	515,082
Clay, Concrete, Glass, Stone	511,885
Waste or Scrap Materials	502,363

Nonmetallic Minerals	1,480,755
Clay, Concrete, Glass, Stone	802,226
Warehouse, Distribution Center and Drayage Movements	509,035
Waste or Scrap Materials	223,533
Farm Products	128,180



TOP COMMODITY by Value, 2018

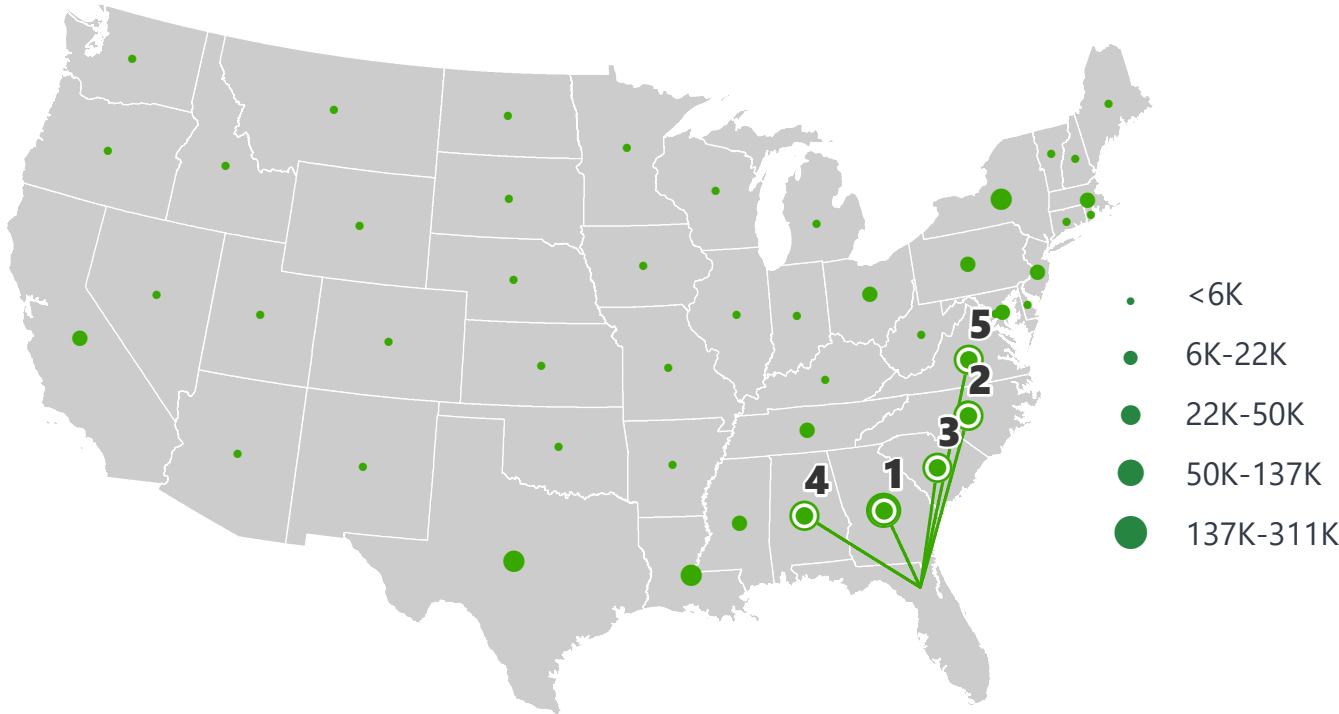


Warehouse, Distribution Center and Drayage Movements	\$ 785,973,330
Petroleum or Coal Products	\$ 419,180,530
Food or Kindred Products	\$ 356,708,242
Transportation Equipment	\$ 343,723,643
Waste or Scrap Materials	\$ 126,250,405

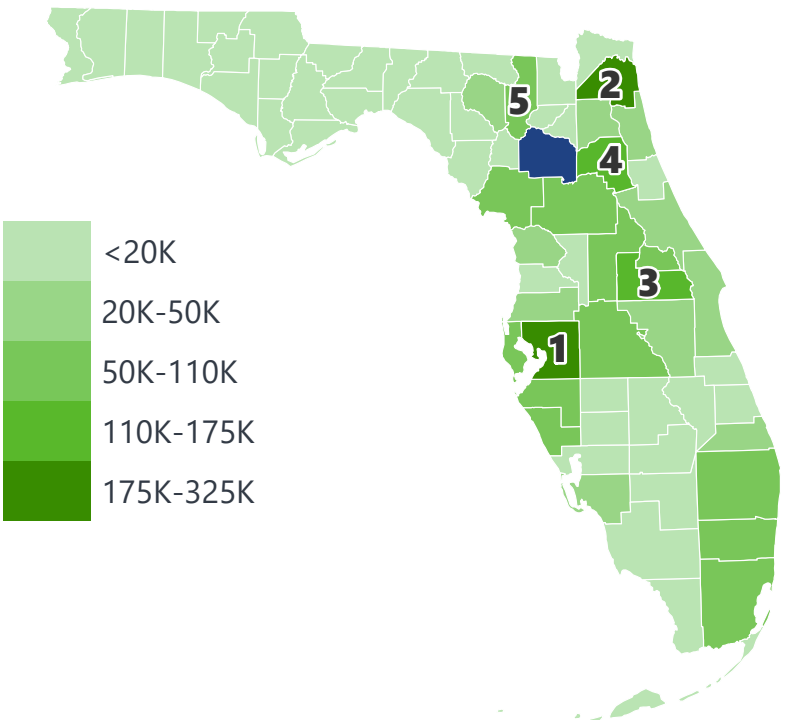
Warehouse, Distribution Center and Drayage Movements	\$ 686,245,974
Instruments, Photo and Optical Equipment	\$ 141,437,897
Clay, Concrete, Glass, Stone	\$ 114,779,759
Lumber or Wood Products	\$ 104,726,024
Farm Products	\$ 89,663,920

ALACHUA COUNTY EXPORTS AND IMPORTS

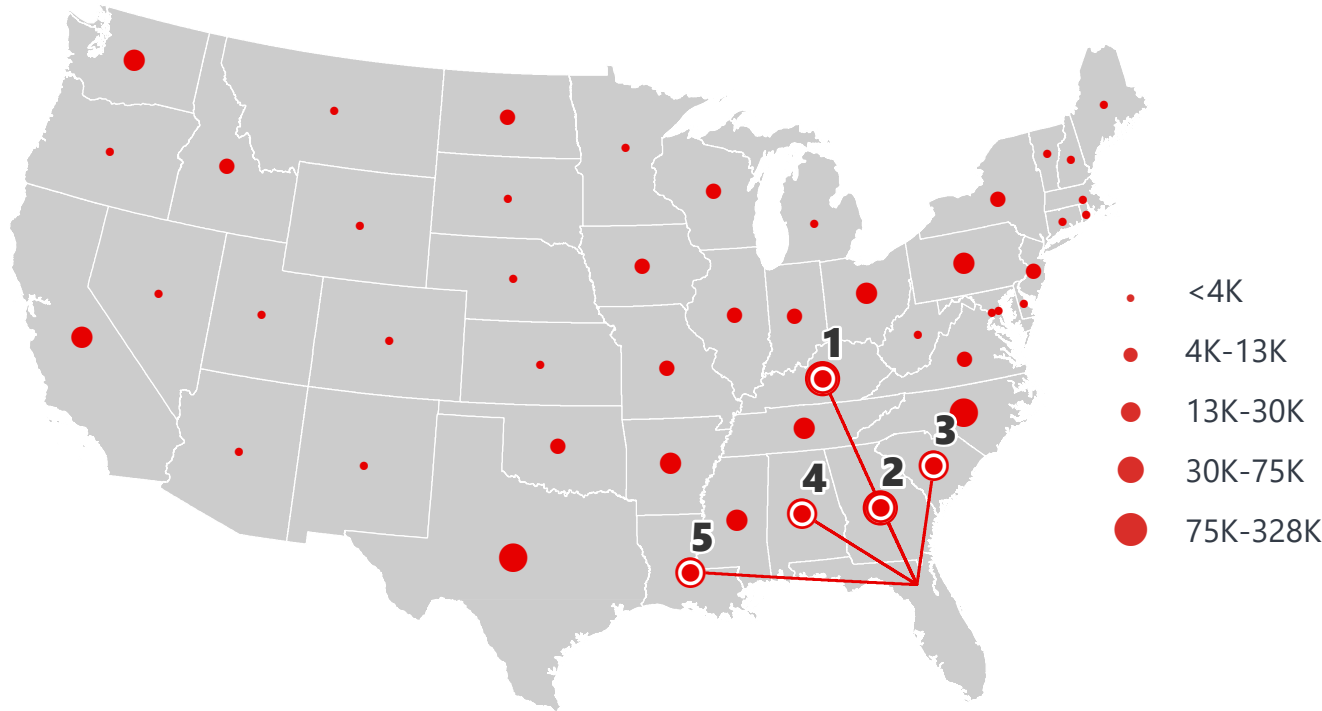
DOMESTIC EXPORTS (TONS)



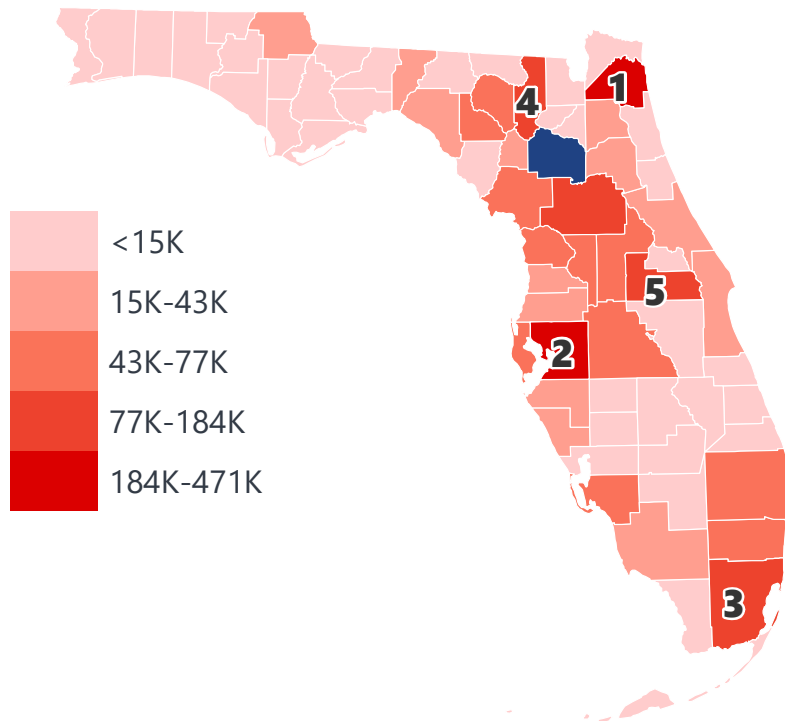
INTRASTATE EXPORTS (TONS)



DOMESTIC IMPORTS (TONS)



INTRASTATE IMPORTS (TONS)



DOMESTIC EXPORTS (TONNAGE)

1	Georgia	310,082
2	North Carolina	136,887
3	South Carolina	50,842
4	Alabama	49,793
5	Virginia	30,496

INTRASTATE EXPORTS (TONNAGE)

1	Hillsborough	323,927
2	Duval	268,003
3	Orange	173,971
4	Putnam	153,464
5	Columbia	108,813

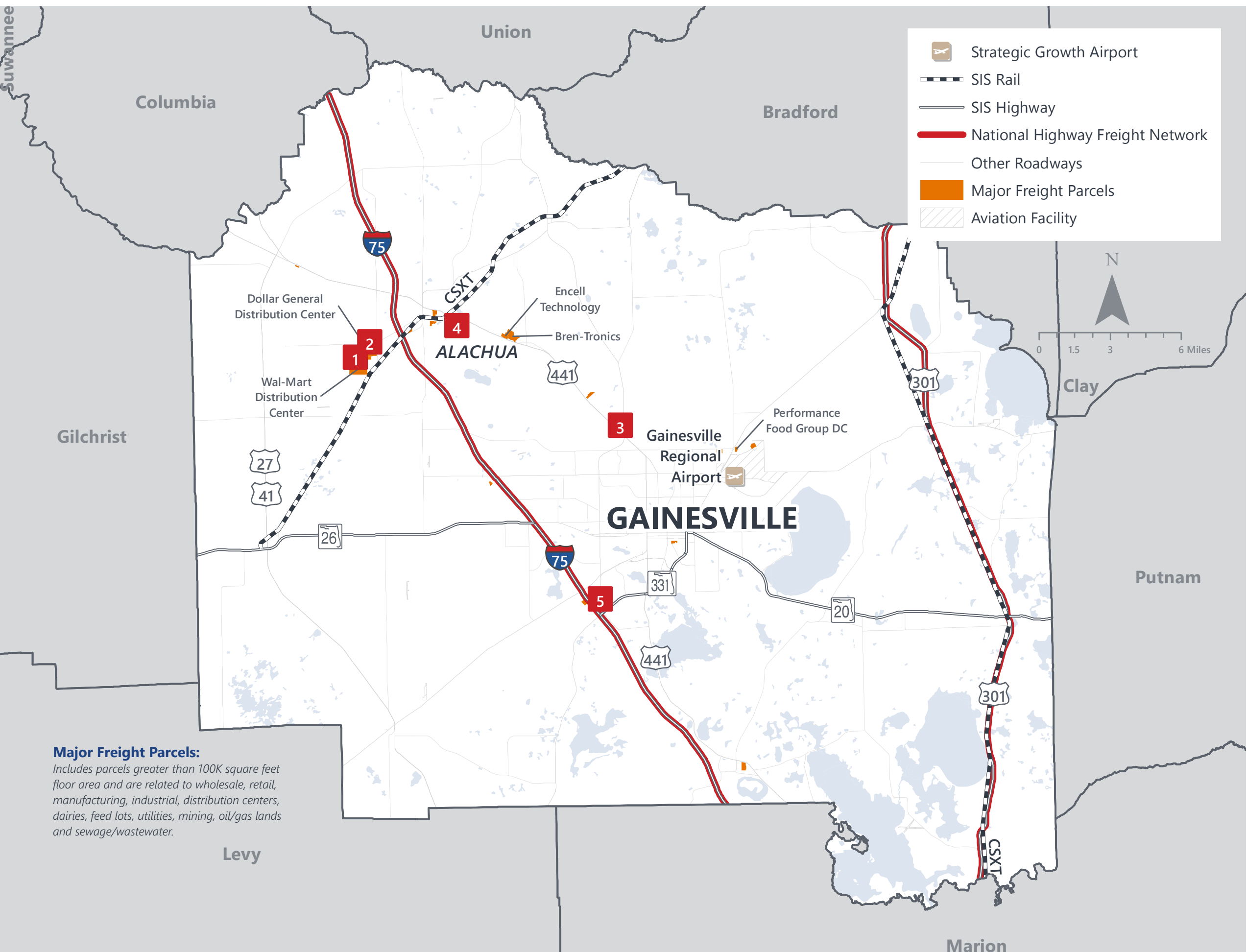
DOMESTIC IMPORTS (TONNAGE)

1	Kentucky	327,504
2	Georgia	250,335
3	South Carolina	74,052
4	Alabama	73,842
5	Louisiana	57,851

INTRASTATE IMPORTS (TONNAGE)

1	Duval	470,053
2	Hillsborough	405,704
3	Miami-Dade	183,374
4	Columbia	158,098
5	Orange	115,663

ALACHUA COUNTY FREIGHT INFRASTRUCTURE



Major Freight Parcels:
Includes parcels greater than 100K square feet floor area and are related to wholesale, retail, manufacturing, industrial, distribution centers, dairies, feed lots, utilities, mining, oil/gas lands and sewage/wastewater.

LARGEST FREIGHT EMPLOYERS

1	Walmart DC	800-900
2	Dollar General	600-700
3	Exactech Inc.	400-500
4	RTI Biologics	300-400
5	USPS	200-300

MAJOR FREIGHT LAND USES

14.6 M SQ.FT Floor Area

63.68%	Warehousing and distribution centers
20.11%	Light manufacturing
5.08%	Dairies, feed lots
3.46%	Wholesale outlets, produce houses, manufacturing outlets
2.49%	Utilities

616.8 M SQ.FT LAND AREA

33.73%	Dairies, feed lots
18.56%	Utilities
15.82%	Warehousing and distribution centers
10.54%	Sewage disposal and waste land
8.27%	Airports, bus terminals and marine terminals

Florida Department of Economic Opportunity, 2018
Florida Department of Revenue, 2019

MAJOR COUNTY COMMODITIES



IMPORTS



TOP COMMODITY by Tonnage, 2018 (relative to Florida)

FL Rank	Commodity	% Florida Share
11	Waste or Scrap Materials	3.19%
7	Coal	3.19%
15	Printed Matter	1.52%
24	Clay, Concrete, Glass, Stone	1.23%
16	Leather or Leather Products	1.23%

EXPORTS



FL Rank	Commodity	% Florida Share
7	Instruments, Photo and Optical Equipment	7.14%
20	Clay, Concrete, Glass, Stone	1.63%
17	Warehouse, Distribution Center and Drayage Movements	1.45%
21	Nonmetallic Minerals	1.43%
24	Lumber or Wood Products	1.27%

TOP COMMODITY by Value, 2018 (relative to Florida)

FL Rank	Commodity	% Florida Share
7	Coal	3.18%
11	Waste or Scrap Materials	3.17%
15	Printed Matter	1.37%
16	Leather or Leather Products	1.27%
23	Clay, Concrete, Glass, Stone	1.07%

FL Rank	Commodity	% Florida Share
17	Lumber or Wood Products	2.09%
3	Coal	1.53%
22	Clay, Concrete, Glass, Stone	1.51%
13	Instruments, Photo and Optical Equipment	1.32%
21	Nonmetallic Minerals	1.05%



TRANSPORTATION STATISTICS AND FREIGHT MOVEMENT BY MODE



887 K | Daily Truck Miles Traveled
1.15 | Planning Time Index
1,820 | Public Roadway Mileage



75 Miles | Distance from closest seaport (JAXPORT)



66.20 | Class I Mainline Miles (CSX)
- | Class II Mainline Miles
15.85 | Class III Mainline Miles (FNOR)



1 Major Regional Airport | Gainesville Regional Airport

FLORIDA HIGHLIGHTS

3rd most populous US State

\$1T Gross Domestic Product

4th Largest US Economy and **17th Largest** Economy in World

Nation's **3rd largest** workforce

1 in 5 U.S. exporters are located in Florida

\$153B International Trade

1.76M jobs supported by Trade, Transportation and Utilities industry sector

1.25M jobs supported by Leisure and Hospitality industry sector

131M annual visitors

CAPITAL **TALLAHASSEE**

AREA
(SQ. MILES) **53,624**

LARGEST
CITY (SIZE) **JACKSONVILLE**

POPULATION
(2019) **21,208,589**

ANNUAL POP
GROWTH RATE
(2010-2019) **1.4%**

EMPLOYMENT
(2019) **8,884,065**

ANNUAL EMP
GROWTH RATE
(2010-2019) **2.8%**

*Bureau of Economic Business Research,
Bureau of Labor Statistics*

DOMESTIC IMPORTS

1	GEORGIA	\$44B
2	CALIFORNIA	\$29B
3	TEXAS	\$26B
4	ALABAMA	\$18B
5	ILLINOIS	\$18B

DOMESTIC EXPORTS

1	GEORGIA	\$22B
2	TEXAS	\$19B
3	CALIFORNIA	\$15B
4	NORTH CAROLINA	\$12B
5	NEW YORK	\$10B

INTERNATIONAL IMPORTS

1	CHINA	\$9.5B
2	JAPAN	\$6.5B
3	BRAZIL	\$6.4B
4	MEXICO	\$4.5B
5	CHILE	\$3.7B

INTERNATIONAL EXPORTS

1	BRAZIL	\$13.4B
2	COLOMBIA	\$4.2B
3	ARGENTINA	\$3.6B
4	DOMINICAN REPUBLIC	\$3.1B
5	CHILE	\$3B

TRANSPORTATION STATISTICS AND FREIGHT MOVEMENT BY MODE



83%
TONNAGE

71%
VALUE

123,104 Public roadway mileage
12,130 State Highway System (SHS) mileage
30.7M Daily truck miles traveled on SHS
98 Public truck parking facilities



3.5%
TONNAGE

2.9%
VALUE

15 Deepwater seaports
4.1M Twenty-foot equivalent units (TEUs)
16.8M Annual cruise passengers



6.7%
TONNAGE

1.8%
VALUE

2,936 Miles of roads
6.9M Annual rail passenger traffic



0.1%
TONNAGE

5.4%
VALUE

129 Public use airports
20 Commercial service airports
2 Active spaceports



3.6%
TONNAGE

1%
VALUE

5,899 Miles of gas transmission and hazardous liquid pipelines



3.1%
TONNAGE

17.9%
VALUE

Includes shipments by multiple modes and by parcel delivery services, U.S. Postal Service, or couriers (capped at 150 pounds). This category is not limited to containerized or trailer-on-flatcar shipments.

FLORIDA COMMODITY FLOWS (2018-2045)



IMPORTS



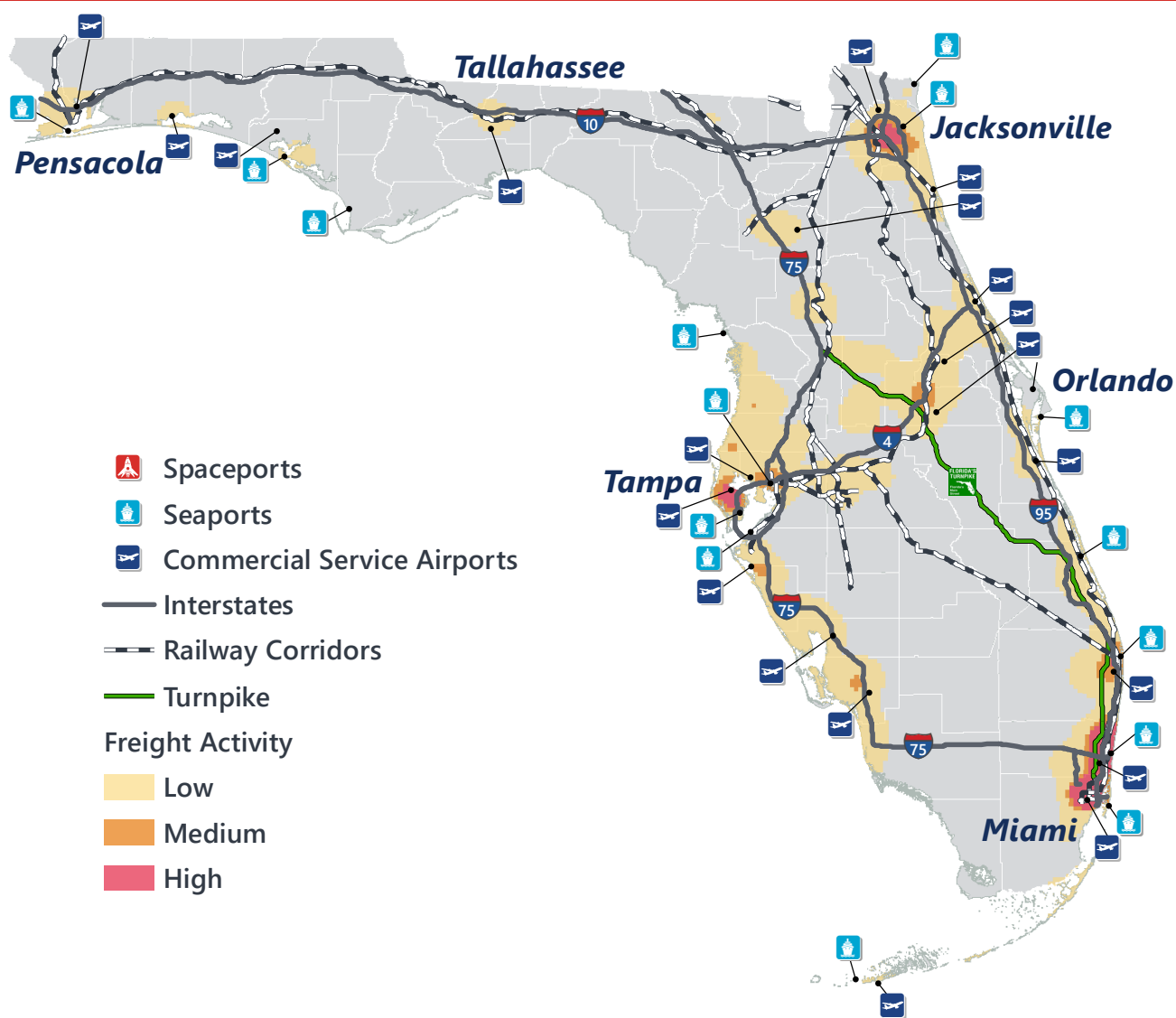
WITHIN FL



EXPORTS

	2018	2045	2018	2045	2018	2045
TONNAGE	142M	190M	656M	761M	57M	103M
VALUE	\$321B	\$690B	\$402B	\$844B	\$180B	\$606B

Freight Analysis Framework (FAF) 4.5.1.



Rickey Fitzgerald
Manager, Freight & Multimodal Operations
 Florida Department of Transportation
 605 Suwannee Street, Tallahassee, FL 32399
 Rickey.Fitzgerald@dot.state.fl.us
 850.414.4702