



JOINT FLORIDA
Model Task Force & Transportation
Data and Analytics Workshop



Central Office Updates – Forecasting and Trends

Thomas Hill, State Modeling Manger





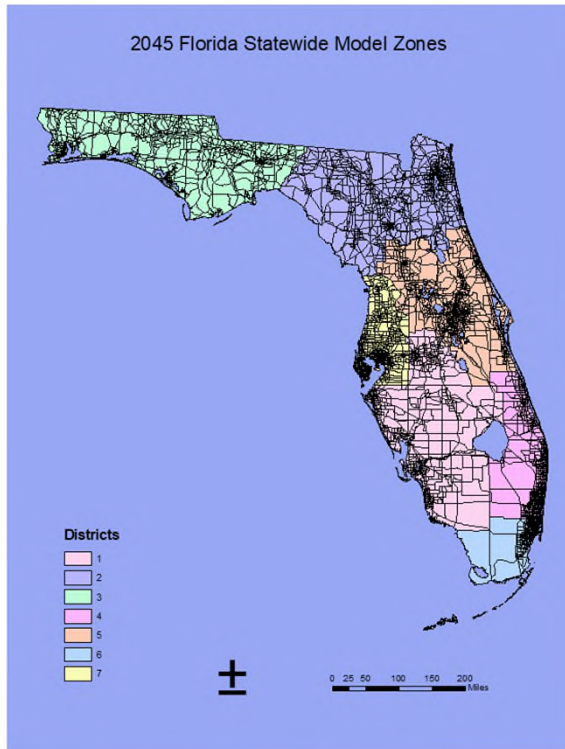
Florida Statewide Model

- Trip Production rate updated
- Introduced Destination Choice
- Introduced Long Distance Mode Choice
- Introduced Short Distance Mode Choice Factoring
- Updated Tolling Methodology to consider Income / VOT
- Introduced Firm Evolution Model
- Introduced Feedback Looping
- Streamlined assignment reporting / count etc.





Model Structure



- 8,588 Total Internal Zones
- 9,367 Total zones including North American zones for freight
- 57 Zones used for passenger IE/EI
 - 9479 – 9538
- Run Time: Approximately 10 hours
- Machine Specs for 10-hour runtime
 - RAM: 64 GB
 - Cores: 32
 - At least 100 GB of free hard drive space
- Unloaded Model: 3GB
- Loaded Model: 20GB





FTO Projects

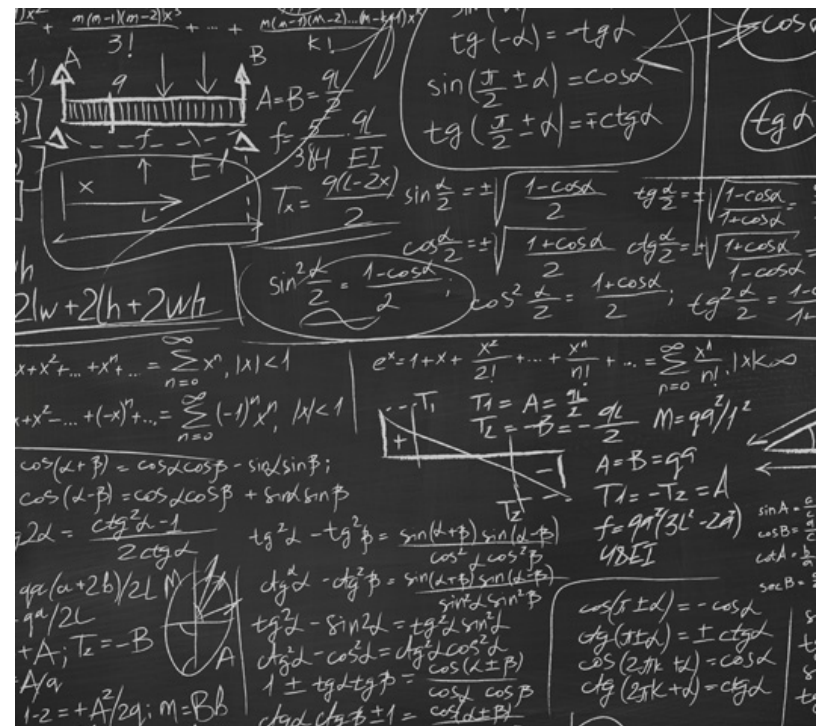
- Hurricane Behavior Study
 - Statewide Survey
 - Impacts of new technology
- Emergency Operations
 - Urban Evacuation Model
- Automated and Connected Vehicles
 - CAV Modeling applications (TWO)
 - Data surrogates
 - CAV Freight
 - Shifts in Mode Choice





FTO Research

- Tourism
 - UF Department of Tourism
 - Tourist O/Ds
 - Tourist Flows
- Trueshape Network
 - UF Department of Civil Engineering
- Freight Economics
 - FreightTEC
- SIS Integration
 - Strategic Implementation Office
- Microsimulation
 - FIU Hadi

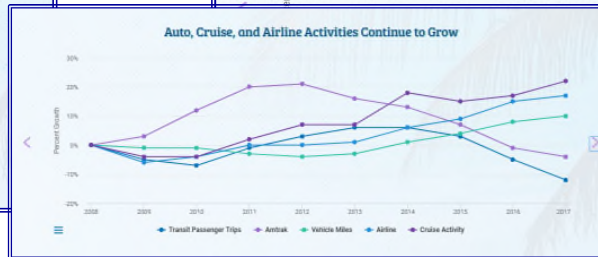
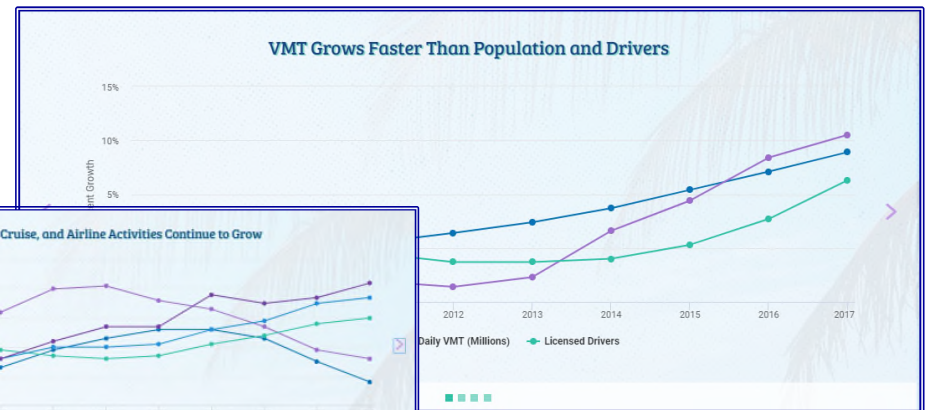
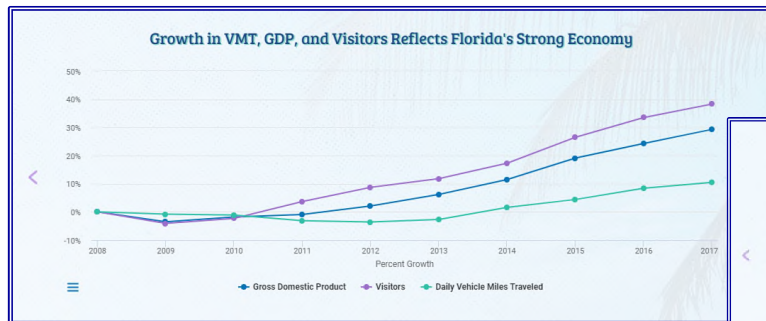




FTO – Trends

The Trends and Emerging Transportation Division is responsible for

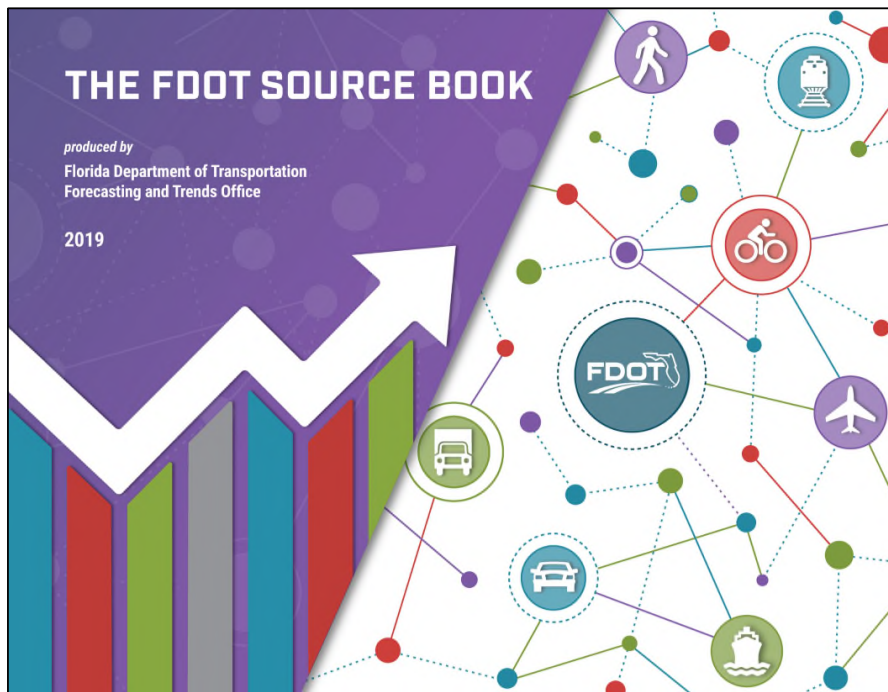
- Developing mobility measures,
- Producing Census and urban boundary products,
- Researching emerging transportation technologies, and
- providing trends analysis.



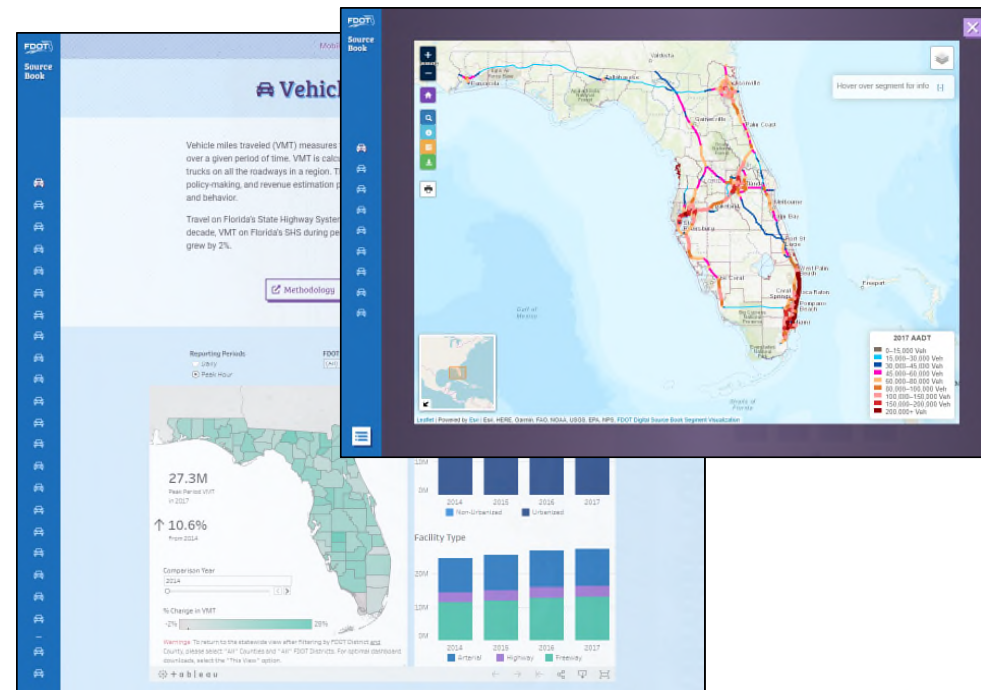


FTO - Trends

FDOT Source Book - 2019



FDOTSourceBook.com





Forecasting and Trends Update

Thank You
Questions?

Thomas Hill

State Modeling Manager

Thomas.Hill@dot.state.fl.us

850.414.4924

