

District Two Update

Scott A. Clem, AICP





Presentation Outline

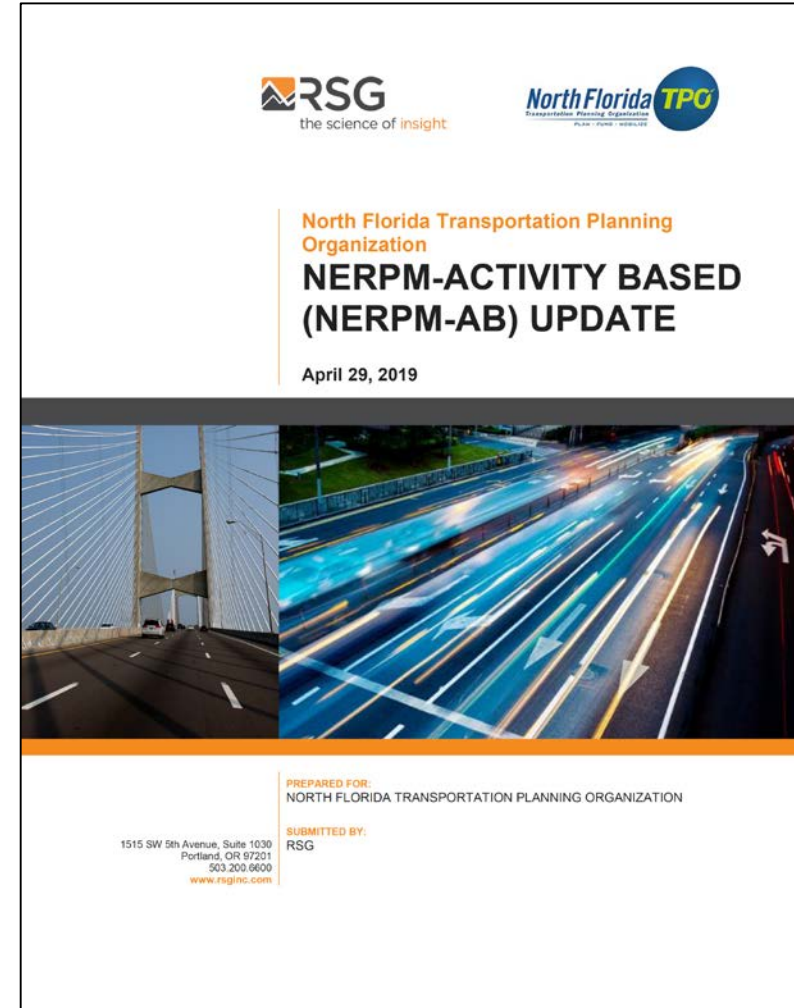
- Northeast Regional Planning Model
- Gainesville MTPO/Alachua County Model
- Northeast Florida Transportation Applications Forum
- LOS Reporting Tool
- Turning Movement Count Inventory
- Multimodal Site Impact
- Emerging Technologies
- Smart North Florida Integrated Data Exchange





Northeast Regional Planning Model

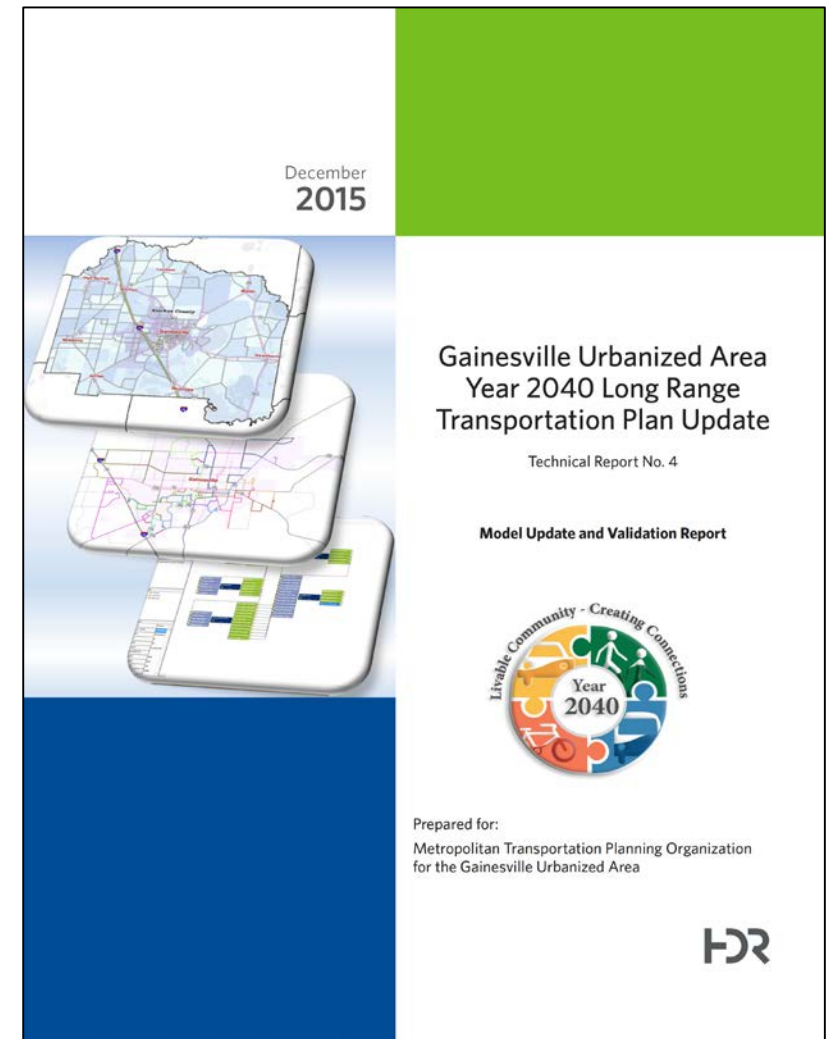
- NFTPO recently completed NERPM-AB2 V1 as part of the 2045 LRTP Update
- 2015 Base Year
- Handles mixed-use development, active transportation, transit and pricing
- Undergoing review – will be posted on FSUTMS Online in Spring 2020
- Training will be scheduled after the official release





Gainesville MPO/Alachua County Model

- Gainesville MTPO had completed the current version of the model in 2015 as part of the 2040 LRTP Update
- 2010 Base Year
- 2045 LRTP model update underway (base year 2015)



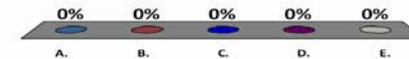


Northeast Florida Transportation Applications Forum

- Interactive meetings
- Subject matter expert presentations
- Local government technical assistance
- Post meeting survey

Test – do you like answering polls?

- A. Absolutely no!!!
- B. No
- C. Maybe
- D. Yes
- E. Oh God yes!!!



LOS Reporting Tool

The screenshot displays the LOS Reporting Tool interface. At the top left, there is a 'Level of Service' section with a color-coded legend (green, yellow, orange, red) and a car icon. Below this is a 'Map Legend' section with several layers:

- Map Layer Transparency (with a slider)
- Level of Service Segment Breaks
- Level of Service Segments (with color-coded lines for B, C, D, E, F)
- Strategic Intermodal System (SIS) (with yellow lines for Existing SIS and dashed yellow lines for Proposed SIS)
- County Boundary

 A 'Location Search' section is at the bottom left, containing a text input field and a 'Find Address' button. Below the search field are sample entries:

- Sample address: 100 S Main St
- Sample intersection: E Bay St & S Main St
- Sample landmark: The Jacksonville Landing
- Sample city: Jacksonville

 The main map area shows a network of roads color-coded by Level of Service (LOS) across several counties including Duval, Baker, Columbia, Union, Bradford, Glay, St. Johns, Alachua, Putnam, Levy, and Suwannee. The map includes a scale bar (0 to 20 miles) and the Esri logo. At the top of the map area, there are buttons for 'D2 Bike/Ped LOS', 'D2 Context Classification', and 'Disclaimer'. A 'Level: 9' indicator is also present.





Turning Movement Counts Inventory

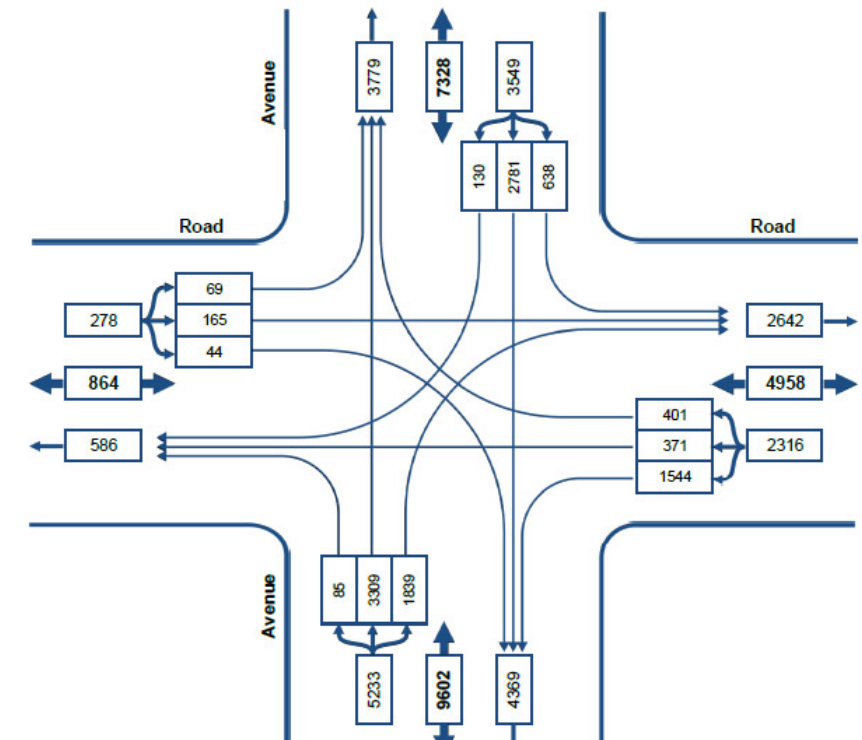
- Central repository
- Counts color coded by year
- Historical trends



Intersection Turning Movements

Location:
Suburb:
Survey dates: 20 February => 13 March
Datasets:

Average Weekday Traffic (Mon-Fri)
Axle Pairs





Multimodal Site Impact



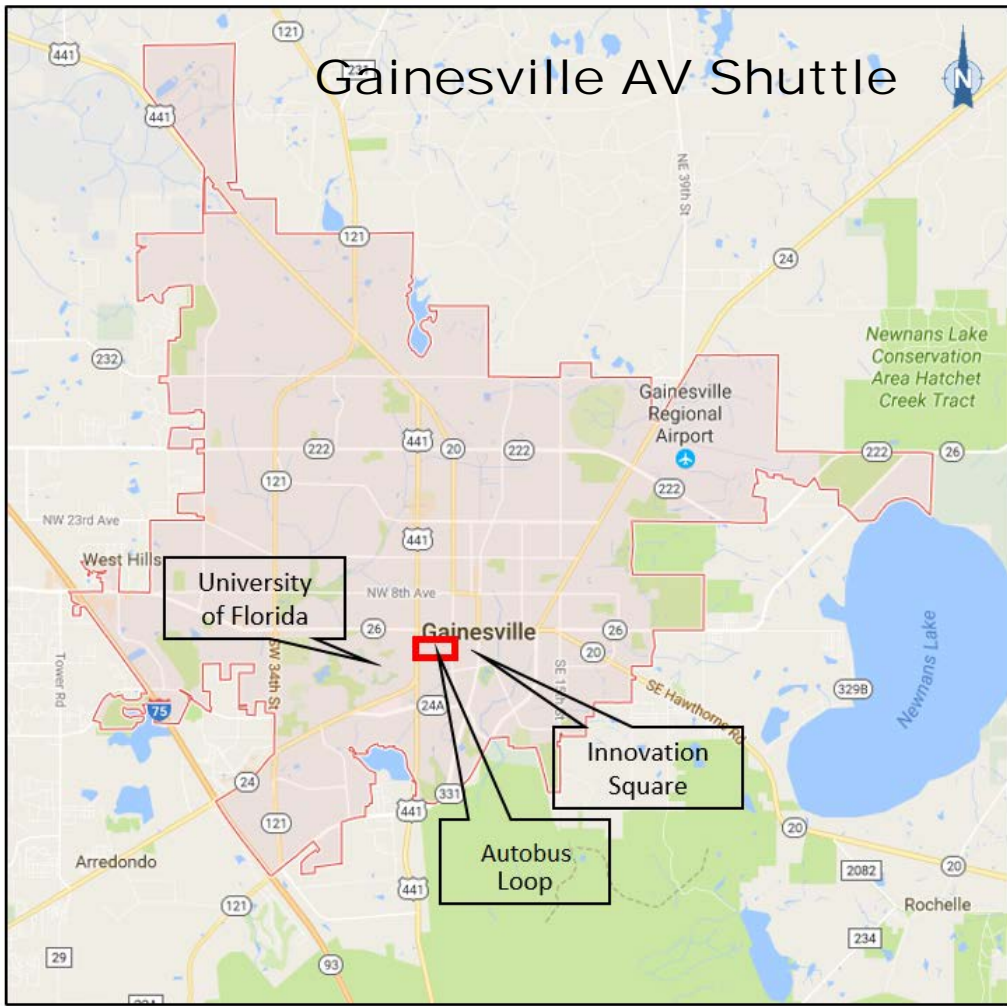
DRAFT

MULTIMODAL SITE IMPACT

Promoting safe and efficient movement of non-motorized users.



Emerging Technologies



Ultimate Urban Circulator (U²C)





Smart North Florida Integrated Data Exchange

- Big data warehouse
- Founding partners
 - North Florida TPO
 - City of Jacksonville
 - City of St. Augustine
 - Jacksonville Chamber of Commerce (JAXUSA)
 - Jacksonville Transportation Authority (JTA)
 - JEA
- smarthenorthflorida.com





Scott A. Clem, AICP

FDOT District Two

2198 Edison Avenue – MS 2806

Jacksonville, FL 32204-2730

scott.clem@dot.state.fl.us

904-360-5681