

JOINT FLORIDA
Model Task Force & Transportation
Data and Analytics Workshop



Welcome and Introduction

February 26, 2020





The Longest Journey Starts with a Single Agenda

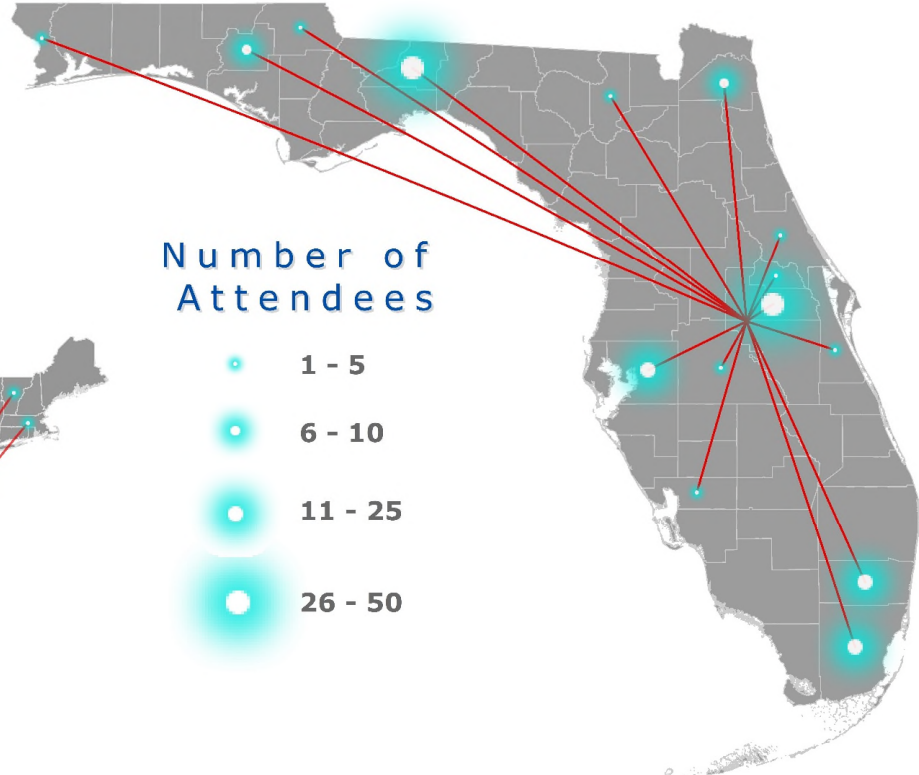
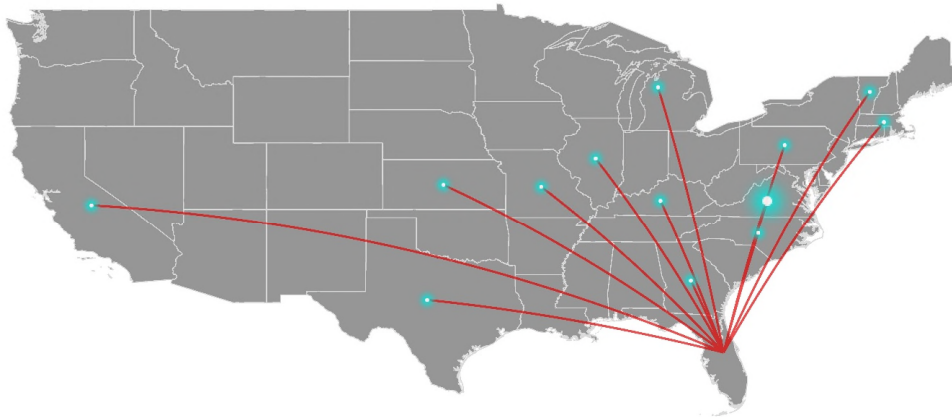
Shen Huiwei





WELCOME

JOINT FLORIDA Model Task Force & Transportation Data and Analytics Workshop



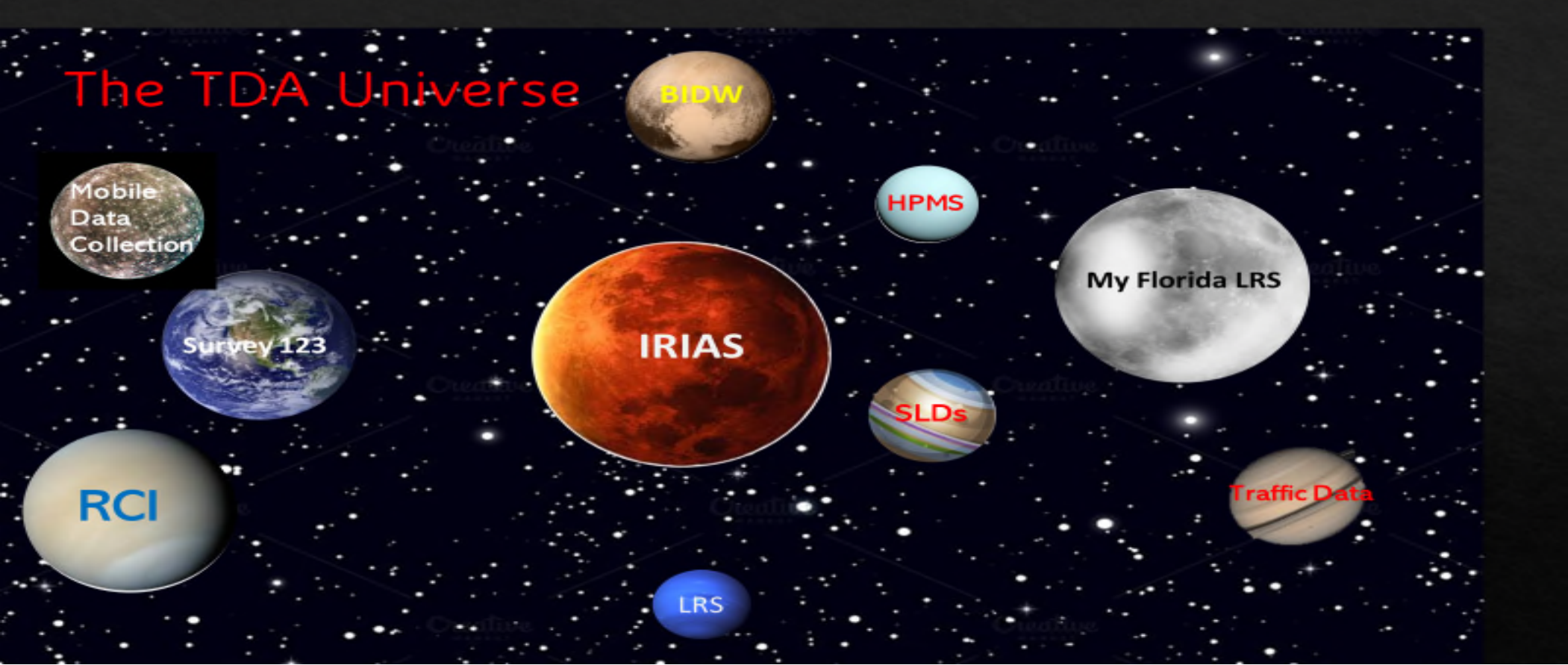
Number of Attendees

- 1 - 5
- 6 - 10
- 11 - 25
- 26 - 50



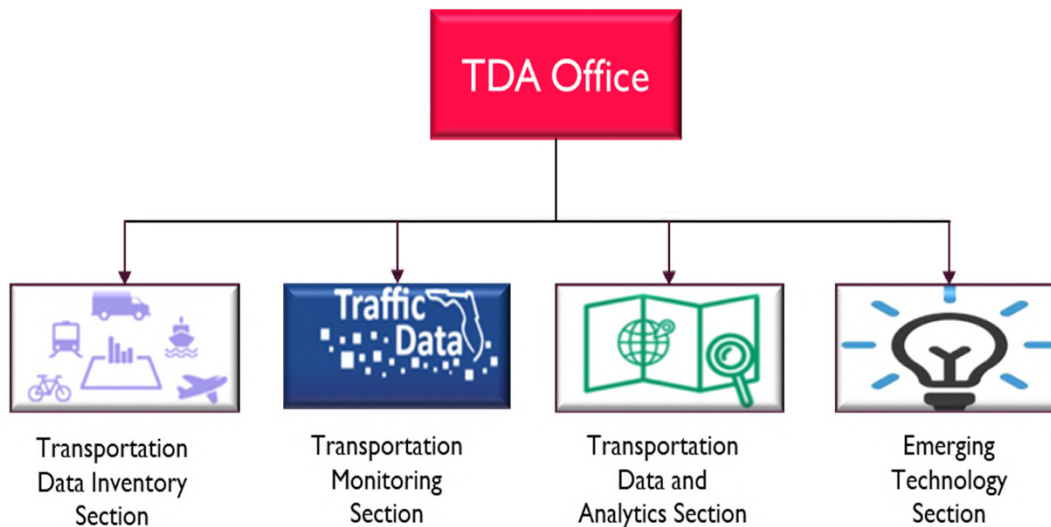


THE TDA UNIVERSE





Transportation Data and Analytics Office Organizational Chart



- **Created in 2015 from the Transportation Statistics Office**
- **Joined the Transportation Technology Office and CIM Office in 2016**
- **Transportation Modeling and Forecasting remained with Planning**





Traffic Monitoring Section



- 18,000 Portable Counts / 350 Permanent Sites
- Weigh in Motion (WIM) Auto Calibration
- Statewide Non-Motorized Traffic Monitoring Program
- Emergency Shoulder Use (ESU) Counts
- Transformation to FDOT MCSAW Fiber Network
- Converting from TPASS to MS2
- Super WIM Sites

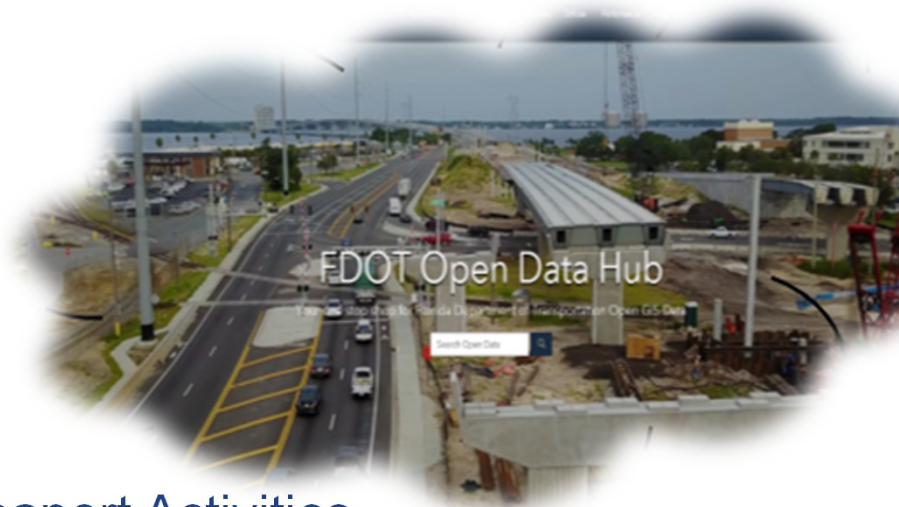




Transportation Data and Analytics Section



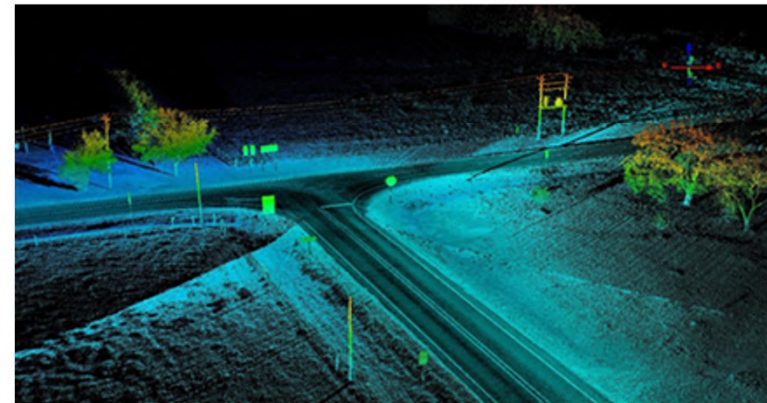
- Web Mapping Applications
- Linear Referencing System
- US Bike Route System
- Data Analysis
 - Post Hurricane Analysis and Mapping
 - Florida's Seaport Commodities Study
 - An Analysis of U.S./China Trade Tariff's on Seaport Activities
 - Port of Miami Traffic Analysis





Transportation Data Inventory Section

- Lidar/Video/Pavement Data Collection Pilot Project
- Integrated Roadway Asset Identification System (IRAIS)
- HPMS Data Support Activities
- Seaport Berth Utilization Study – Port Tampa Bay
- Statewide Analysis of Truck Parking
- DataLytics
- ARNOLD (All Roads Network of Linear Referenced Data)





Emerging Technology Section

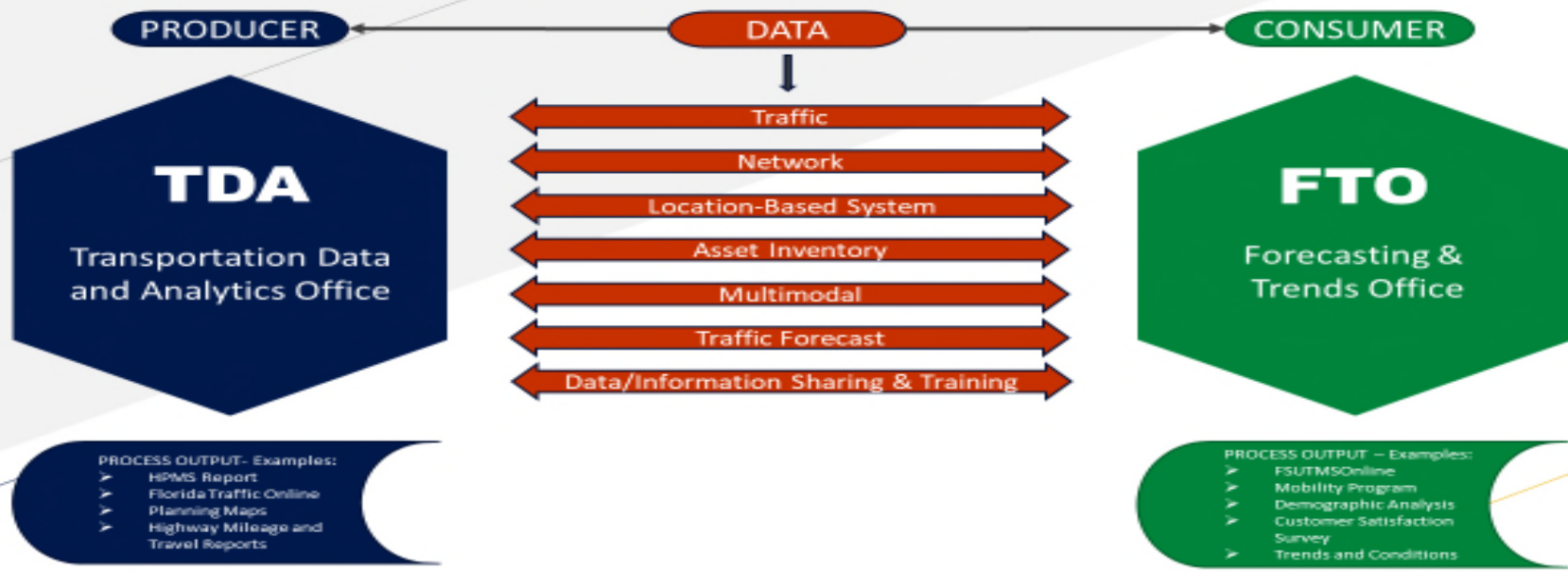


- Advanced Freight Mobility Solutions (AFMS)
- Truck Taxonomy and Classification – Machine Learning
- Driver Assisted Truck Platooning (DATP)
- Predictive Analytics
- SR 70 AV Safety Study
- FAV Annual Summit





THE T.D.A./F.T.O. RELATIONSHIP





TDA – FTO

TDA – FTO DATA PRODUCTS/SERVICES

TDA

- DataLytics
- Florida Automated Vehicles
- Florida Federal Aid Systems (HPMS)
- Florida Official Intercity Highway Mileage
- Florida Traffic Monitoring Handbook
- Florida Traffic Online
- GIS Data (ArcGIS Online)
- Highway Data
- Highway Mileage Reports
- Highway Systems
- Multimodal Data Program
- Non-Motorized Traffic Monitoring Program
- Planning Maps
- Roadway Characteristic Inventory (RCI)
- Straight-line Diagrams
- Traffic Information

FTO

- Customer Satisfaction Survey
- Demographic Analysis
- Mobility Program
- FSUTMSOnline
- Trends and Conditions
- FDOT Source Book
- Research Coordination

Source TDA: <https://www.fdot.gov/statistics/about.shtm>

Source FTO: <https://www.fdot.gov/planning/fto/programs.shtm>





FUTURE DIRECTION

- What gaps and challenges are faced in data availability and usage to support modeling activities?
- How do new data sets shape or influence modeling activities?
- Specifically, what challenges are faced, in terms of data, to evaluate CV/AV technology-related scenarios in travel demand modeling?
- How can Transportation Data and Analytics (TDA) office help in providing new data sets and/or meeting new data needs?





VITAL FEW

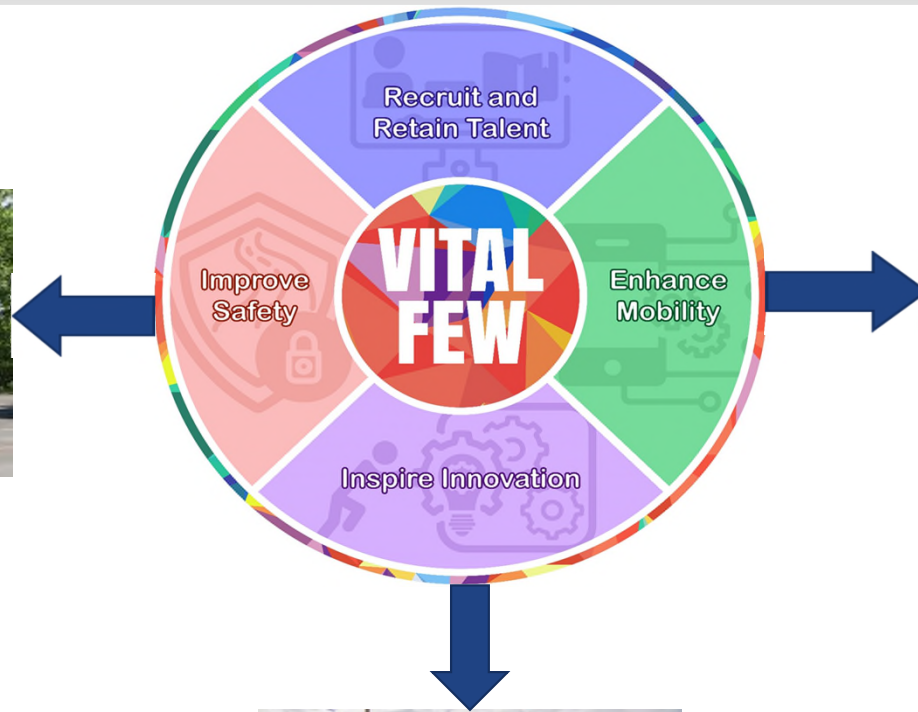


VITAL FEW





VITAL FEW





CLOSING

3 Things You Can Learn From a Dog About This Meeting

- 1. Live each moment.** Dogs teach us not to worry about the past.
- 2. Turn fear into love.** Dogs teach us that we can turn our fears into love.
- 3. Never hold a grudge.** Dogs teach us that holding grudges just doesn't work.

