

# LEON COUNTY FUNCTIONAL CLASSIFICATIONS

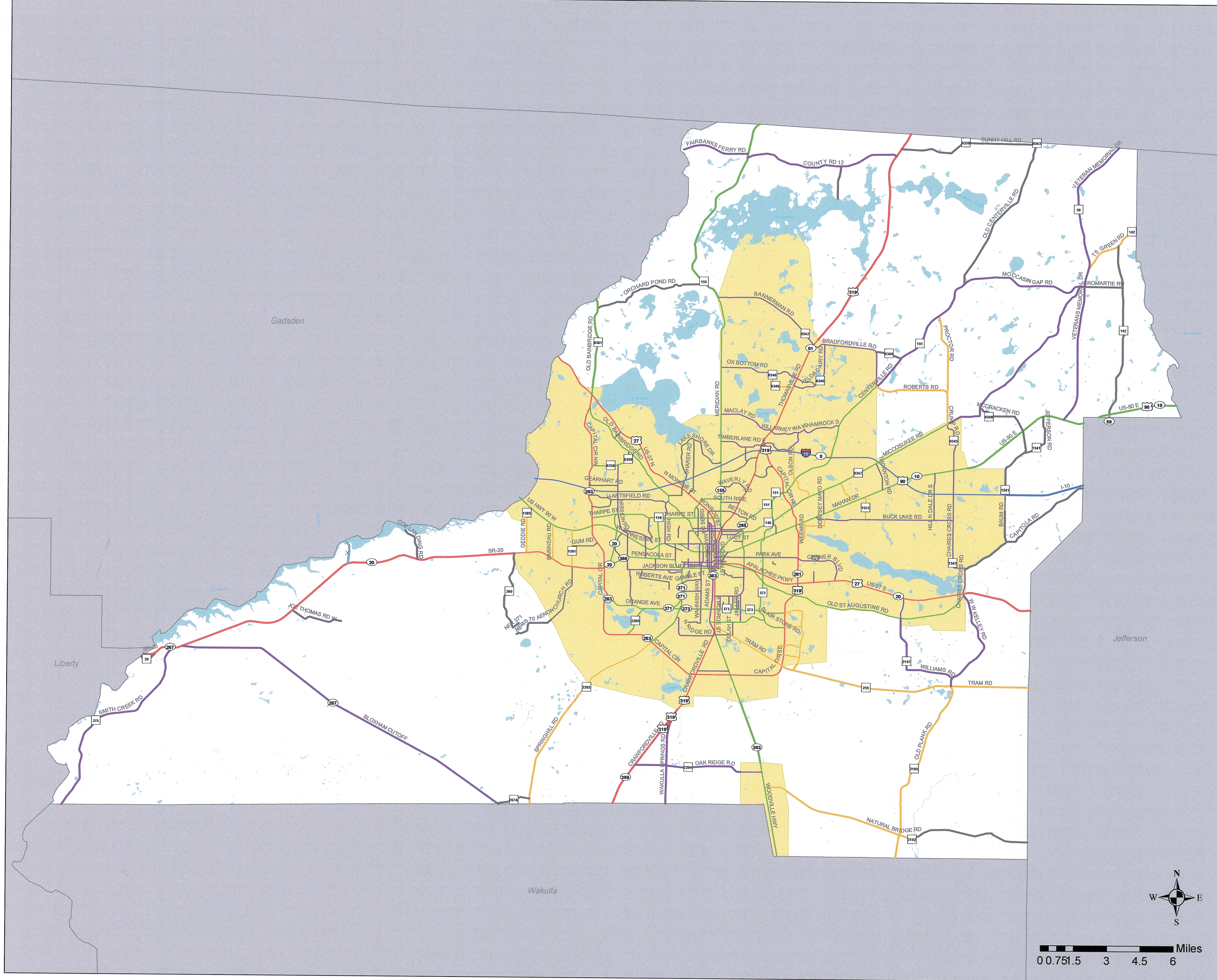
Recommended By:

*[Signature]* 6/16/14  
Chairman, Capital Region Transportation Planning Agency Date

*[Signature]* 6/17/14  
Florida Department of Transportation Date

Approved By:

*[Signature]* 07/25/2014  
Federal Highway Administration Date



Leon County	
01 - Principal Arterial-Interstate	RURAL
02 - Principal Arterial-Expressway	RURAL
04 - Principal Arterial-Other	RURAL
06 - Minor Arterial	RURAL
07 - Major Collector	RURAL
08 - Minor Collector	RURAL
09 - Local	RURAL
11 - Principal Arterial-Interstate	URBAN
12 - Principal Arterial-Freeway and Expressway	URBAN
14 - Principal Arterial-Other	URBAN
16 - Minor Arterial	URBAN
17 - Major Collector	URBAN
18 - Minor Collector (Fed Aid)	URBAN
19 - Local	URBAN
Urban Boundary	

Prepared By:  
FLORIDA DEPARTMENT OF TRANSPORTATION  
in cooperation with the  
US DEPARTMENT OF TRANSPORTATION

File Created:  
June 4, 2014

