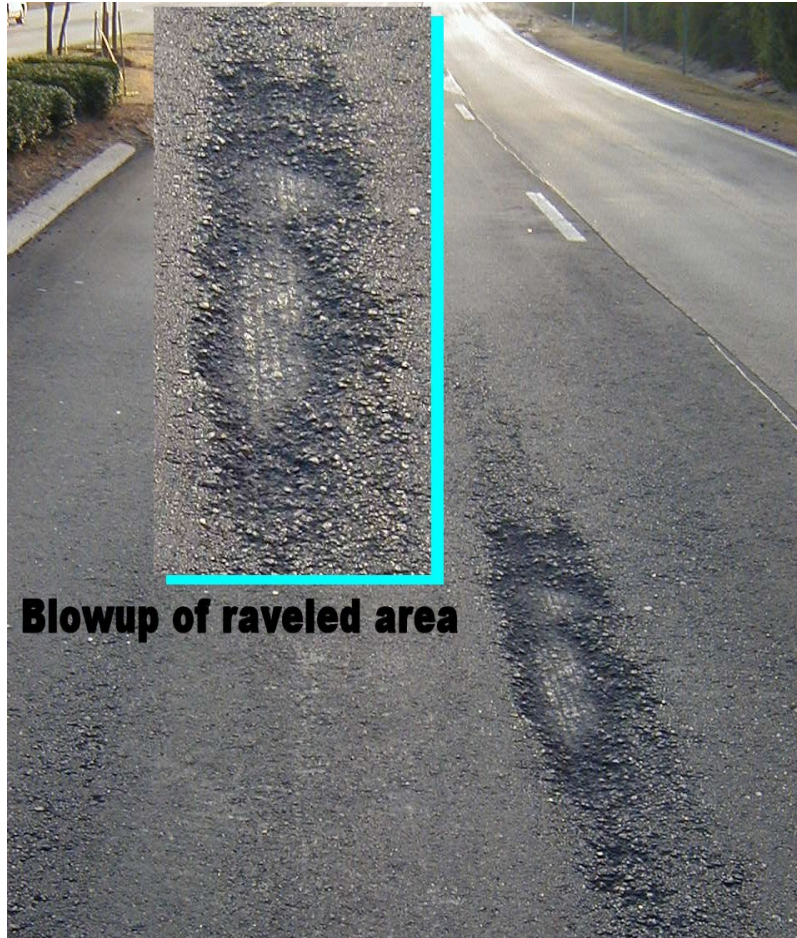


# Pavement Deficiencies (Section 330) and Pavement Distress (Section 338)

**RAVELING** - The progressive separation of aggregate particles in a pavement from the surface downward or from the edges inward.



**Blowup of raveled area**

**BLEEDING** - The upward movement of liquid asphalt resulting in the formation of a film of asphalt on the surface.



**SLIPPAGE**- The movement between layers when none should exist. Picture illustrates classical U pattern.



**POT HOLES**



## DELAMINATION



