

Milling Patterns

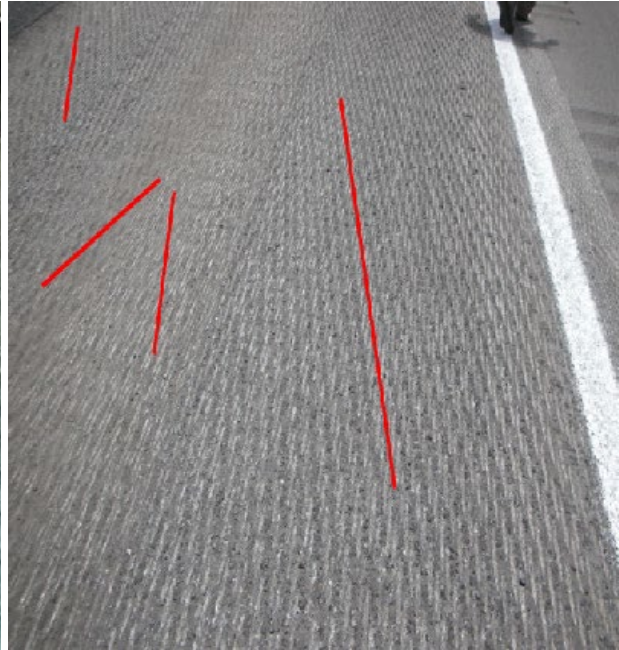
THE FOLLOWING PICTURES ARE EXAMPLES OF THE STRIATION PATTERNS SPECIFIED IN SECTION 327.

The Department will accept a milled surface having a striation pattern that does not show the chevron or diagonal striation effect. The striation grooves shall be continuous longitudinal lines and shall not have any diagonal patterns present.

ACCEPTABLE STRIATION PATTERN – The grooves are continuous longitudinal lines and no diagonal patterns are present.



UNACCEPTABLE STRIATION PATTERN - The grooves are not continuous longitudinal lines and diagonal or chevron patterns are present.



COMPARISION EXAMPLE – The picture compares acceptable and unacceptable striations.

