



S E A P O R T S

FLORIDA'S FOREIGN-TRADE ZONES



June 2024





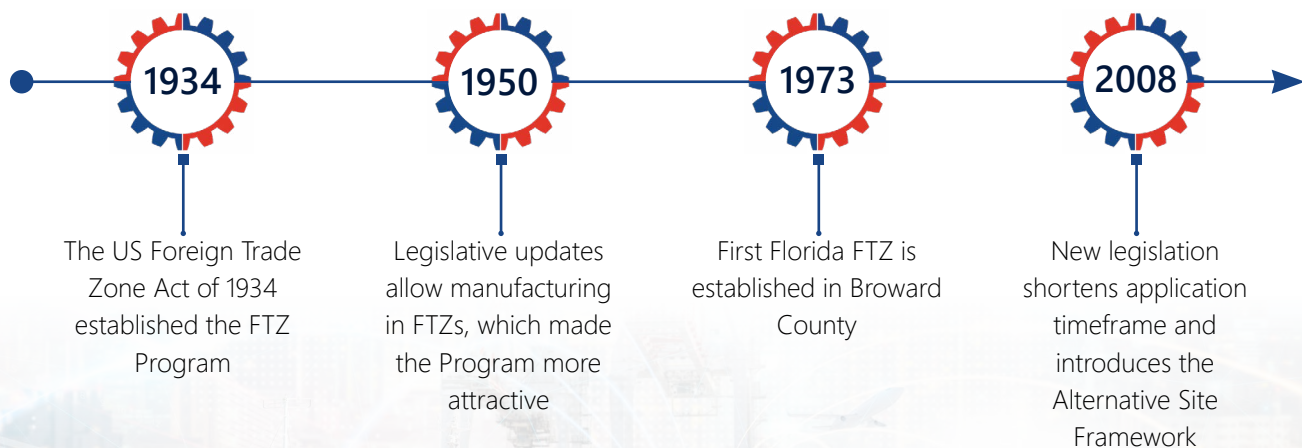
Originally designed for job creation, foreign-trade zones (FTZs) in the United States have emerged as a key tool to promote international trade and economic competitiveness on a global scale. FTZs are geographically designated special service areas authorized and regulated by the US Government that incentivize international trade by exempting, deferring, or reducing import duties and tariffs for certain business activities. As such, FTZs play a critical role in establishing Florida as an international trade gateway, promoting economic development, and facilitating an efficient supply chain.

HISTORY AND LEGISLATION

The U.S. Foreign Trade Zones Act was passed in 1934 to accelerate international trade amid recovery from the Great Depression. The Act established the framework for creating a national network of foreign trade zones by enabling each port of entry to have at least one designated FTZ. In 1950, an amendment was passed to allow manufacturing in zones, which diversified and expanded the types of businesses locating within an FTZ. Two years later in 1952, the legislation was amended again to authorize designation of subzones, which allowed companies outside a service area to have access to FTZ benefits.

In 2008, new regulations codified in 15 CFR 400.2, were issued to streamline the designation process and shorten administrative approval of an FTZ from one year to four months. The Alternative Site Framework (ASF) concept was also established, which allowed for greater flexibility in designation of sites by introducing expanded service areas, and the ability to allow businesses to join existing FTZs or activate benefits while being physically located outside a zone but within a service area.

Florida enables FTZs in F.S. 288 Part III in accordance with federal statutory requirements regarding establishment, maintenance, and operation of FTZs. There is an additional clause included that ensures that Florida Department of Citrus laws remain applicable in FTZs.





AUTHORITY AND DESIGNATION

The Foreign-Trade Zones Board, established by the Foreign-Trade Zones Act of 1934, is responsible for creation and administration of designated zones (15 CFR Part 400) including review and approval of rates charged by zone grantees to their respective users. The FTZ Board includes the Secretary of Commerce (Chair) and the Secretary of the Treasury, with most action authority delegated to an alternate from the Department of Commerce and the Department of the Treasury.

U.S. Customs and Border Protection (CBP) acts as an advisor to the FTZ Board and is responsible for the enforcement of applicable laws and regulations under 19 CFR Part 146 within each designated FTZ. Additional CBP duties include the collection of tariff revenue, merchandise processing, zone activity monitoring, and compliance reviews and inspections.

FTZ grantees are generally state or local public agencies, often port authorities and economic development corporations. In some cases, private corporations may also apply for FTZ authority, as a public utility, depending on state law governing foreign-trade zone application and designation. To apply for an FTZ grant of authority, a grantee must submit an application to the Foreign-Trade Zones Board that identifies a regional service area that is within or adjacent to a port of entry. Before a site can begin usage, FTZ designation must be approved by the FTZ Board, and before an operator can begin to receive zone benefits, the site must be activated by CBP.

SITES AND SUBZONES

Once a foreign-trade zone is approved and the service area established and activated, the grantee may begin to submit individual applications for FTZ sites and subzones. FTZ sites can include seaports, airports, industrial parks, individual buildings or warehouses, manufacturing facilities, or even something as simple as a fenced-in yard or parking lot that is access controlled and meets CBP security requirements.

There are two site designation frameworks that FTZs are authorized to operate under: Traditional Site Framework (TSF) and Alternative Site Framework (ASF). Under the original TSF, the designation of sites and processes related to Minor Boundary Modifications (MBM) were slow, rigid, and resource-intensive, often leading to designation for speculative reasons that left many FTZs unused.





The ASF was created as an alternative to the TSF that would provide greater flexibility in designation of sites and subzones to streamline the approval process to 30-days; introduce an expanded service area of up to 60 miles or a 90-minute drive from the associated port of entry, which allows businesses to join an existing FTZ or activate benefits while being physically located outside a zone but within a service area; and add a "sunset" requirement to de-designate a site if it goes unused for 3-5 years.

Additionally, the ASF created two new site designations that include magnet sites and usage-drive sites (or subzones). Magnet sites are similar to traditional general-purpose zones, with areas serving to attract multiple users to the same location, while usage-driven sites allow a single operator to obtain FTZ designation with the creation of a sub-zone, often used for production or manufacturing activities.

ACTIVITY AND OPERATIONS

Foreign-trade zone sites are physically located on U.S. soil but operate as though they are outside the CBP customs territory for import entry and tariff purposes. This allows operators to withhold or defer duties and tariffs on merchandise that is stored within an FTZ for domestic import or later re-exported out of the country.

Acceptable activities that can occur within an FTZ are generally related to storage and transformation that may include assembly, processing, repacking, repair, and destruction of merchandise. While retail trade is not permitted within an FTZ, merchandise can still be exhibited, examined, and sampled for business purposes.

Production and manufacturing activity that involves substantial transformation of merchandise is allowed within a designated FTZ site or subzone but requires authorization from the Foreign-Trade Zones Board and may have additional restrictions or limits on the type of merchandise and operations performed.

BENEFITS OF FOREIGN TRADE ZONES

FTZs offer several financial and logistical benefits for businesses including:



Duty Exemption and Deferral: Customs import duties are exempted for goods that are re-exported from the FTZ or destroyed within the zone and are only paid when goods leave the FTZ and enter the Customs territory.



Tariff and Tax Relief: Merchandise that is transformed or manufactured within an FTZ can benefit from lower tariff rates if the resulting product has a lower tariff rate than the input products would have had if imported separately. Additionally, merchandise held in an FTZ for approved purposes is exempt from state and local ad valorem taxes until it is imported or re-exported.



Reduced Operating Costs: Companies operating within an FTZ are able to file a single customs entry for all goods shipped within a seven-day period, reducing the number of filings and associated Merchandise Processing Fee (MPF). Operators may also benefit from no time limits on storage, which impact costs associated with quotas, rate changes, credits/duty drawbacks, and insurance.



Streamlined Efficiency: Usually located at or near an international seaport or airport, FTZ operators can benefit from streamlined delivery of imports into the zone, often without leaving the secure port area. Exporting from or between FTZs can be done more efficiently with direct access to multimodal transportation options like highway, rail, and air.



FLORIDA'S FOREIGN TRADE ZONES

Florida is home to 20 FTZs located throughout the state near major Ports of Entry, which include major seaports and airports that facilitate international trade and travel. The first FTZ in Florida was established in the late 1970s in Broward County at Port Everglades with the most recent designation in Miami-Dade County in 2012 serving PortMiami and Miami International Airport. Over 29,000 acres of designated service areas extend statewide, making the majority of Florida eligible for foreign-trade zone activities.

International Trade

Today, Florida foreign-trade zones serve hundreds of businesses through general purpose and user-specific sub zones, accounting for nearly 840 activated acres statewide, promoting international trade activity and job creation that benefit Florida's residents and businesses. According to the 2021 Annual Report of the Foreign-Trade Zones Board to Congress, Florida FTZs were responsible for between \$10 and \$25 billion in total merchandise received and exported, supporting over 10,000 direct jobs. The top merchandise, by value, processed within a Florida foreign-trade zone in 2021 included pharmaceuticals, other products, ships/boats, oil/petroleum, vehicles, and textiles/footwear.

Supply Chain and Transportation

With a population of over 22.2 million residents and 137 million annual visitors in 2022¹, the demand for efficient movement and delivery of goods in Florida continues to grow. Located at or near most major Florida seaports and international airports, Florida foreign-trade zones are well positioned as a critical component to facilitate efficient supply chains that connect the State with international trade partners around the world, spur economic development, create competitive job opportunities, and serve the needs of our growing population for years to come.

As FTZs expand and attract new businesses, the transportation of goods to and from these zones will increase accelerating the need for infrastructure upgrades, operational improvements, and capital investments to ensure Florida's highways, seaports, airports, and railroads can accommodate this future growth in freight activity. Understanding the evolving impacts of FTZs on transportation infrastructure will be integral to supporting their role as key economic and employment drivers throughout Florida

Highway connections into and out of major FTZ sites and subzones should be routinely assessed to identify and address bottlenecks that may hinder the efficient movement of containerized cargo and merchandise into, out of, and between FTZs. Rail connectivity including on-port or near-port intermodal container transfer facilities (ICTFs) will continue to be essential for long distance containerized and bulk shipments, while ongoing investments in seaport capacity and operations will ensure Florida seaports can handle larger more advanced ships. Trends in E-commerce and evolving consumer preferences could drive demand at Florida's airports for expanded aviation cargo facilities to accommodate increased activity from FTZs, especially for high-value merchandise.

¹ Visit Florida, Estimated Visitors. <https://www.visitflorida.org/resources/research/>



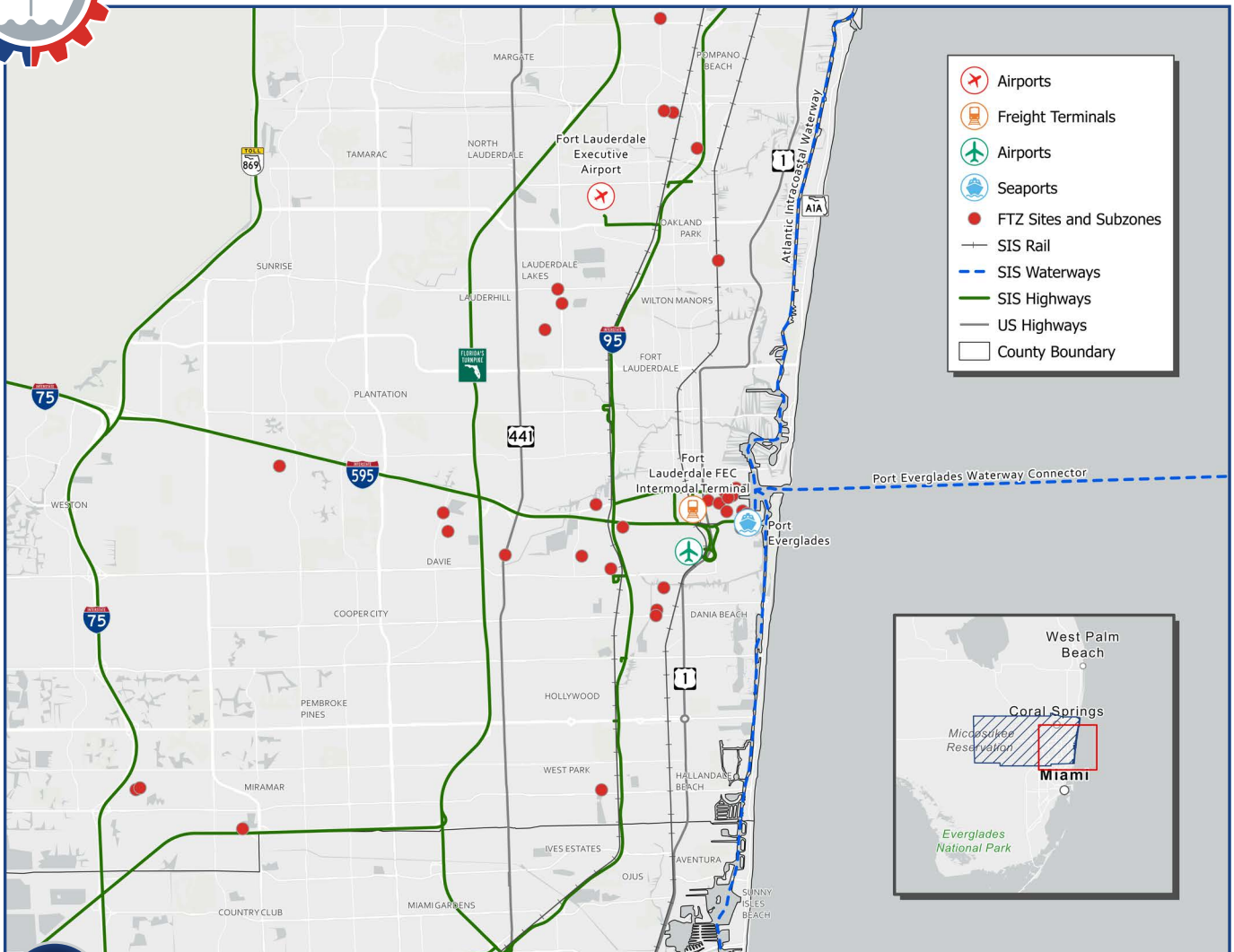


STATEWIDE FOREIGN-TRADE ZONES



* FTZ No.180 Miami (Wynwood) does not currently have Active status.

** Information highlighted in the following FTZ profiles was sourced the International Trade Administration website, 83rd Annual Report of the Foreign-Trade Zones Board to the Congress of the United States (2021), and interviews/surveys completed by FTZ grantees.



25 BROWARD COUNTY FTZ

GRANTEE:	CONTACT INFORMATION
Broward County 1850 Eller Drive Ft. Lauderdale, Florida 33316	Jorge Hernández (954) 468-3501 jorhernandez@broward.org

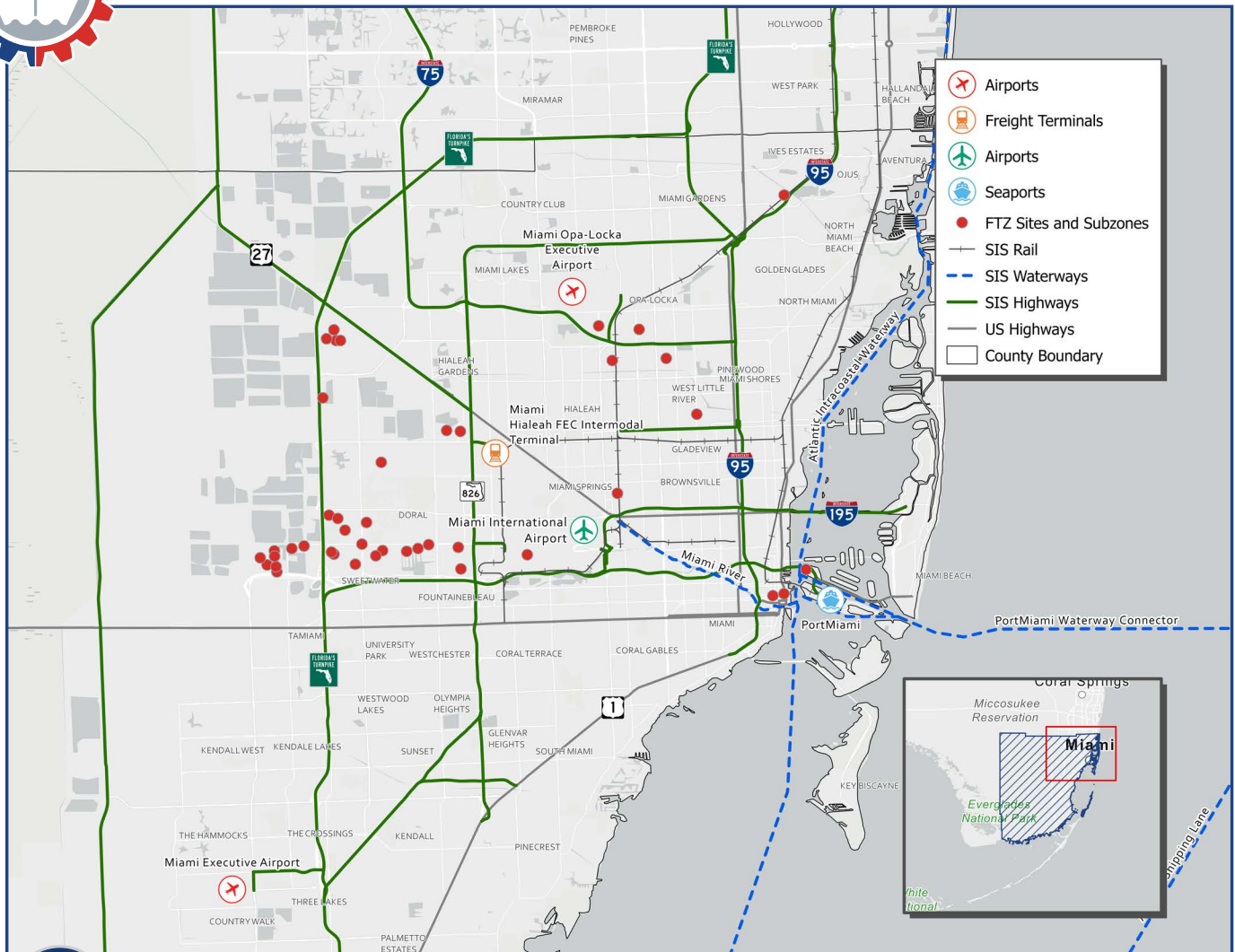
FTZ No. 25 is operated by Port Everglades with a designated service area of 587 acres including 16 acres of activated sites and subzones. In 2021, the zone had 8 operators that handled between \$1 to \$5 billion in merchandise received and \$1 to \$5 billion exported while supporting 251 to 500 direct jobs.

Urban Areas: Fort Lauderdale and Hollywood

Major Industries: Vehicle Components and Petroleum products

<https://www.porteverglades.net/development/ftz-overview/>

NEARBY MAJOR INFRASTRUCTURE
HIGHWAYS I-95, I-595, I-75, Florida's Turnpike, US 1
RAIL CSX, FEC
WATERWAYS Atlantic Ocean Intracoastal
AIRPORT Fort Lauderdale-Hollywood International
SEAPORT Port Everglades
INTERMODAL CONNECTIONS FEC ICTF



32 MIAMI FTZ

GRANTEE:	CONTACT INFORMATION
Greater Miami Foreign Trade Zone, Inc. 1 S.E. 3rd Avenue, Suite 1410 Miami, Florida 33131	Liane Ventura (305) 577-5445 lventura@miamichamber.com

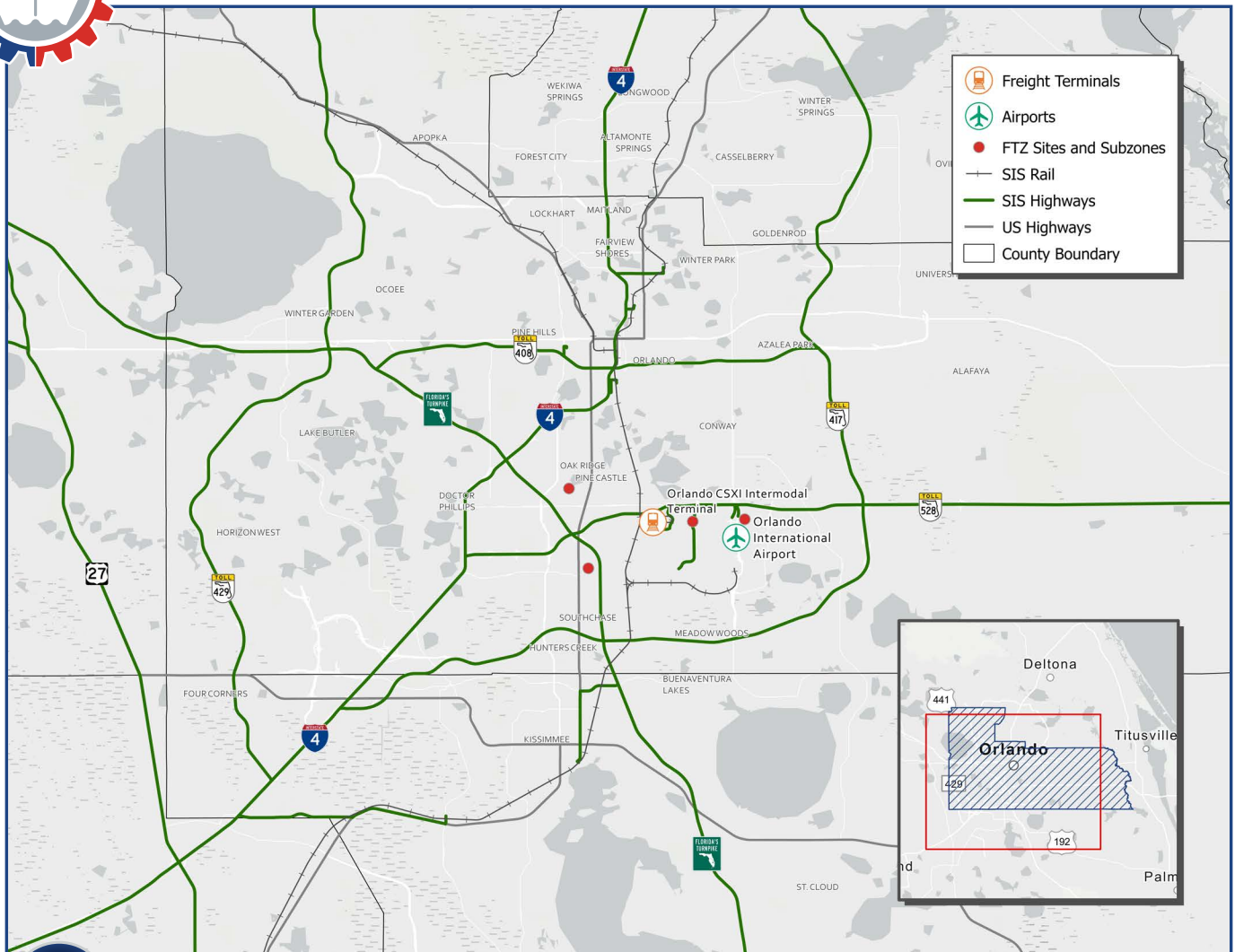
FTZ No. 32 operates under the purview of the Greater Miami Foreign-Trade, Inc., which functions as a public utility, with a designated service area of 214 acres including 102 acres of activated sites and subzones. In 2021, the zone had 30 operators and 2 producers that handled between \$500 to \$750 million in merchandise received and \$250 to \$500 million exported while supporting 751 to 1,000 direct jobs.

Urban Areas: Miami, Hialeah, and Miami Beach

Major Industries: Medical Supplies, Liquors/Spirits, Jewelry/Watches, General Merchandise, and Industrial Equipment

NEARBY MAJOR INFRASTRUCTURE
HIGHWAYS I-95, I-75, Florida's Turnpike, US 1
RAIL CSX, FEC
WATERWAYS Atlantic Ocean Intracoastal
AIRPORT Miami International, Miami Opa-Locka Executive
SEAPORT PortMiami
INTERMODAL CONNECTIONS FEC Hialeah Yard

<https://www.miamichamber.com/ftz-32>



42 ORLANDO FTZ

GRANTEE:	CONTACT INFORMATION
Greater Orlando Aviation Authority 5855 Cargo Road Orlando, Florida 32827	Byron Hoffman (407) 825-3858 byron.hoffman@goaa.org

FTZ No. 42 is operated by the Greater Orlando Aviation Authority (GOAA) with a designated service area of 214 acres including 102 acres of activated sites and subzones. In 2021, the zone had 3 operators and 1 producer that handled between \$500 to \$750 million in merchandise received and \$100 to \$250 million exported while supporting 751 to 1,000 direct jobs.

Urban Areas: Orlando

Major Industries: Automotive, Digital Media, Film & Television Production, Life Sciences, Manufacturing, Power Generation Turbines, Agrotechnology, and Aviation & Aerospace

www.orlandoairports.net/airport-business/#foreign-trade-zone

NEARBY MAJOR INFRASTRUCTURE

HIGHWAYS
I-4, SR 429, SR 417, SR 528, SR 408, US 441, US 17/92, US 27, Florida's Turnpike

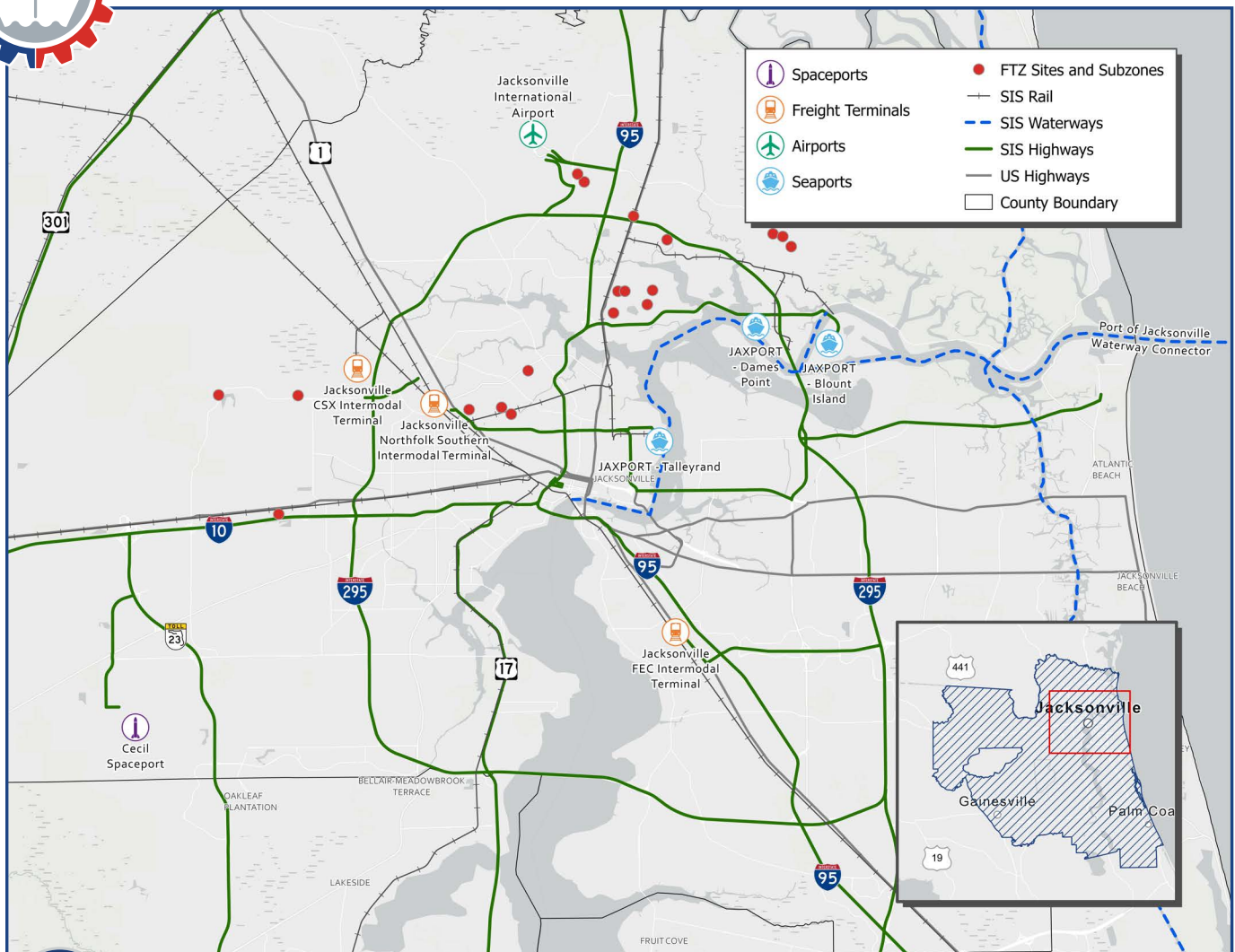
RAIL
CSX

WATERWAYS
Atlantic Intracoastal, Atlantic Ocean

AIRPORT
Orlando International, Orlando Executive, Kennedy Space Center

SEAPORT
Port Canaveral

INTERMODAL CONNECTIONS
Orlando CSX Intermodal Center



64 JACKSONVILLE FTZ

GRANTEE:	CONTACT INFORMATION
Jacksonville Port Authority 2831 Talleyrand Avenue Jacksonville, Florida 32206	Justin Ryan (904) 357-3072 Justin.Ryan@jaxport.com

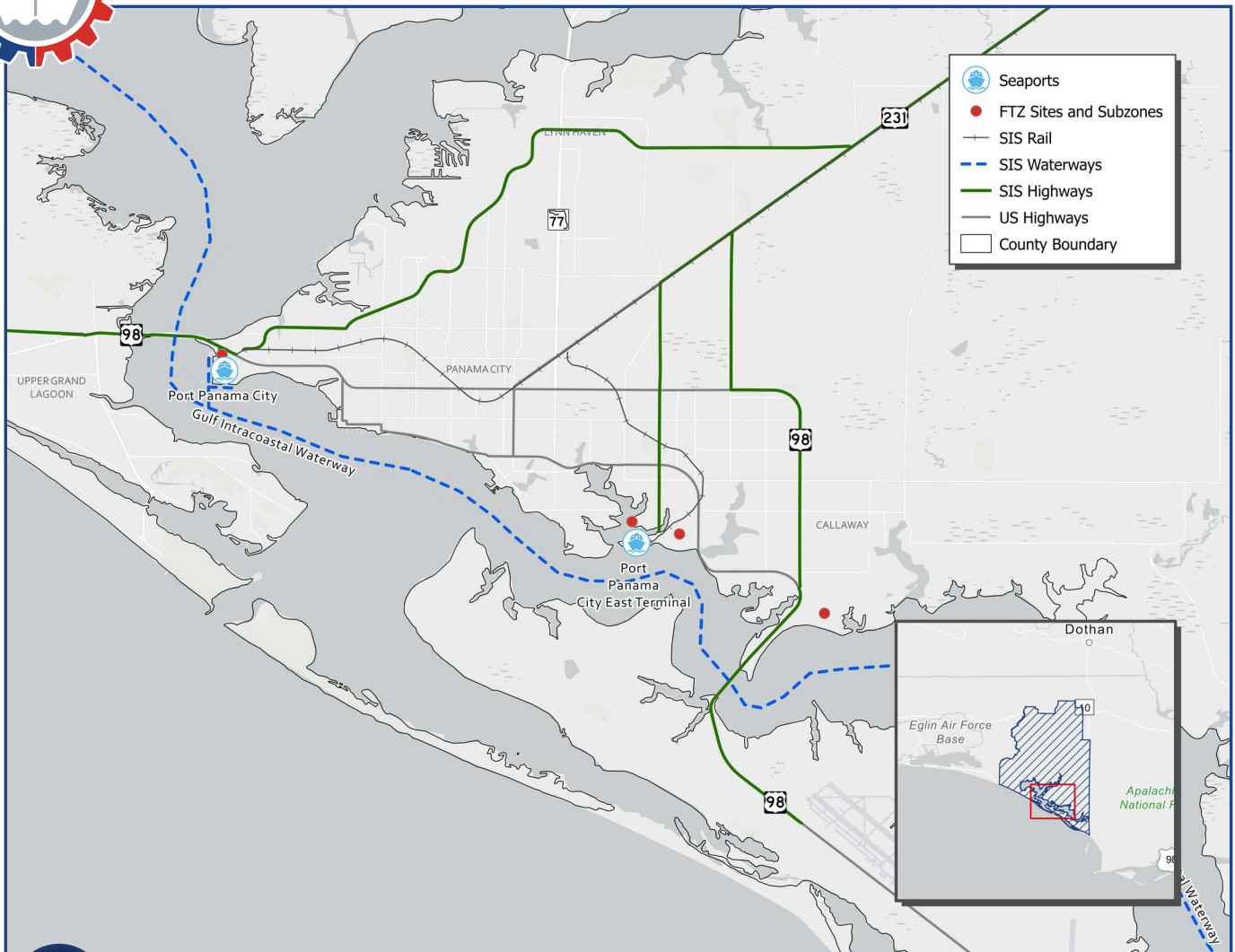
FTZ No. 64 is operated by the Jacksonville Port Authority (JAXPORT) with a designated service area of 1,229 acres including 245 acres of activated sites and subzones. In 2021, the zone had 8 operators and 1 producer that handled between \$1 to \$5 billion in merchandise received and \$100 to \$250 million exported while supporting 1,501 to 2,000 direct jobs.

Urban Areas: Jacksonville, Fernandina Beach, Green Cove Springs, and St. Augustine

Major Industries: Ship Building, Spirits, Distributors, and Logistics

<https://www.jaxport.com/cargo/foreign-trade-zone-64/>

NEARBY MAJOR INFRASTRUCTURE
HIGHWAYS I-95, I-295, I-75, US 1, US 301, US 90
RAIL CSX, FEC, Norfolk Southern
WATERWAYS St. Johns River, Atlantic Intracoastal, Atlantic Ocean
AIRPORT Jacksonville International, Cecil Spaceport
SEAPORT JAXPORT, Port of Fernandina
INTERMODAL CONNECTIONS CSX Talleyrand ICTF, CSX Dames Point ICTF, FEC Bowden Yard



65 PANAMA CITY FTZ

GRANTEE:	CONTACT INFORMATION
Panama City Port Authority One Seaport Drive Panama City, Florida 32401	John Miller (850) 767-3242 jmiller@portpanamacityusa.com

FTZ No. 65 is operated by the Panama City Port Authority with a designated service area of 322 acres including 8.5 acres of activated sites and subzones. In 2021, the zone had 0 operators and 1 producer that handled between \$100 to \$250 million in merchandise received and \$0 to \$.5 million exported while supporting 1,251 to 1,500 direct jobs.

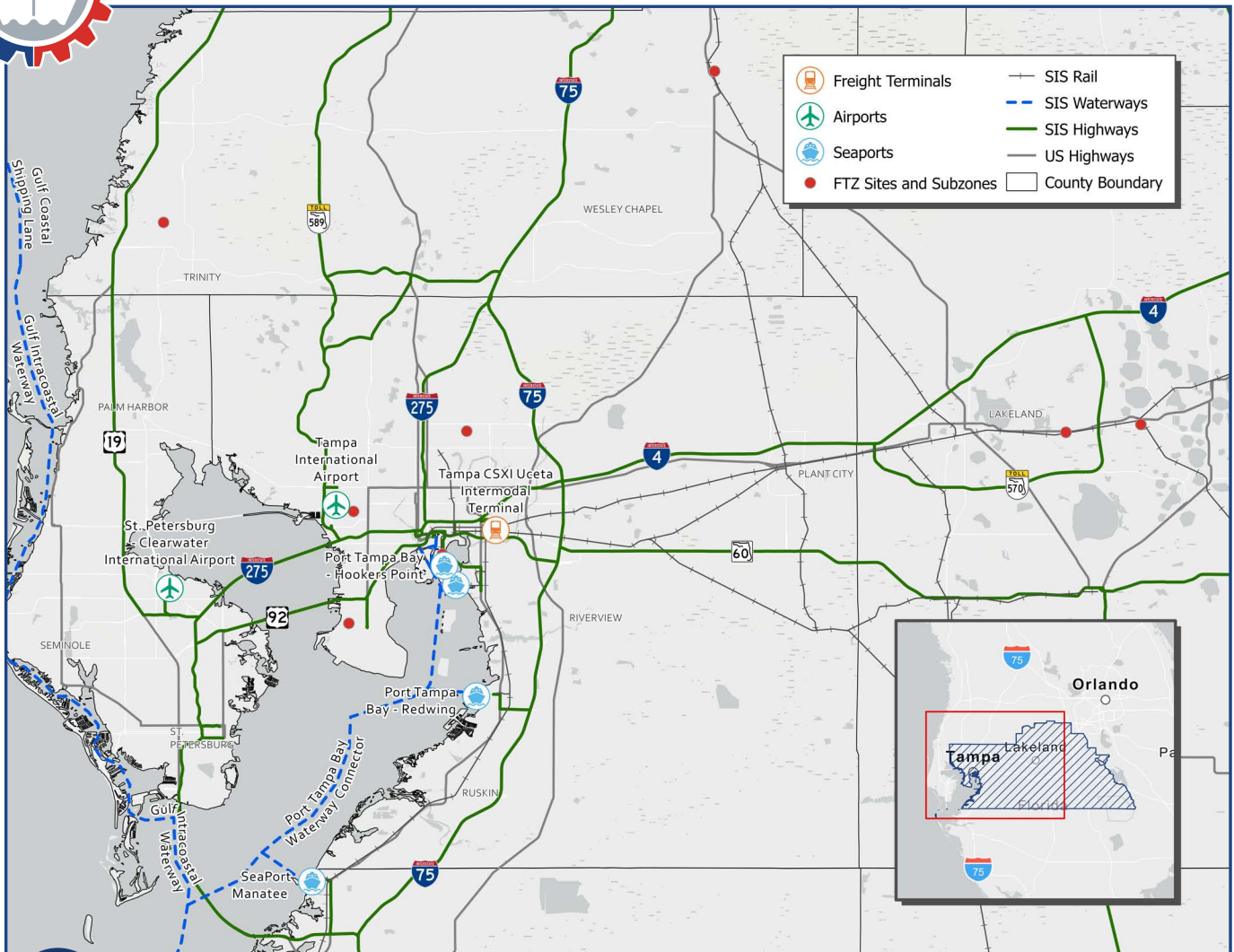
Urban Areas: Panama City, Panama City Beach, Lynn Haven

Major Industries: Copper, Containerized Cargo, Forest Products, Steel, and Ship Building

www.panamacityportauthority.com/location.html

<https://www.panamacity.gov/178/Port-Panama-City>

NEARBY MAJOR INFRASTRUCTURE
HIGHWAYS I-10, US 98, US 231
RAIL Bay Line, CSX
WATERWAYS Gulf of Mexico, Gulf Intracoastal
AIRPORT Northwest Florida Beaches International
SEAPORT Port Panama City
INTERMODAL CONNECTIONS N/A



79 TAMPA FTZ

GRANTEE:	CONTACT INFORMATION
City of Tampa 1101 Channelside Drive, Fourth Floor Tampa, Florida 33602	Torrey Chambliss (813) 905-5125 tchambliss@tampaport.com

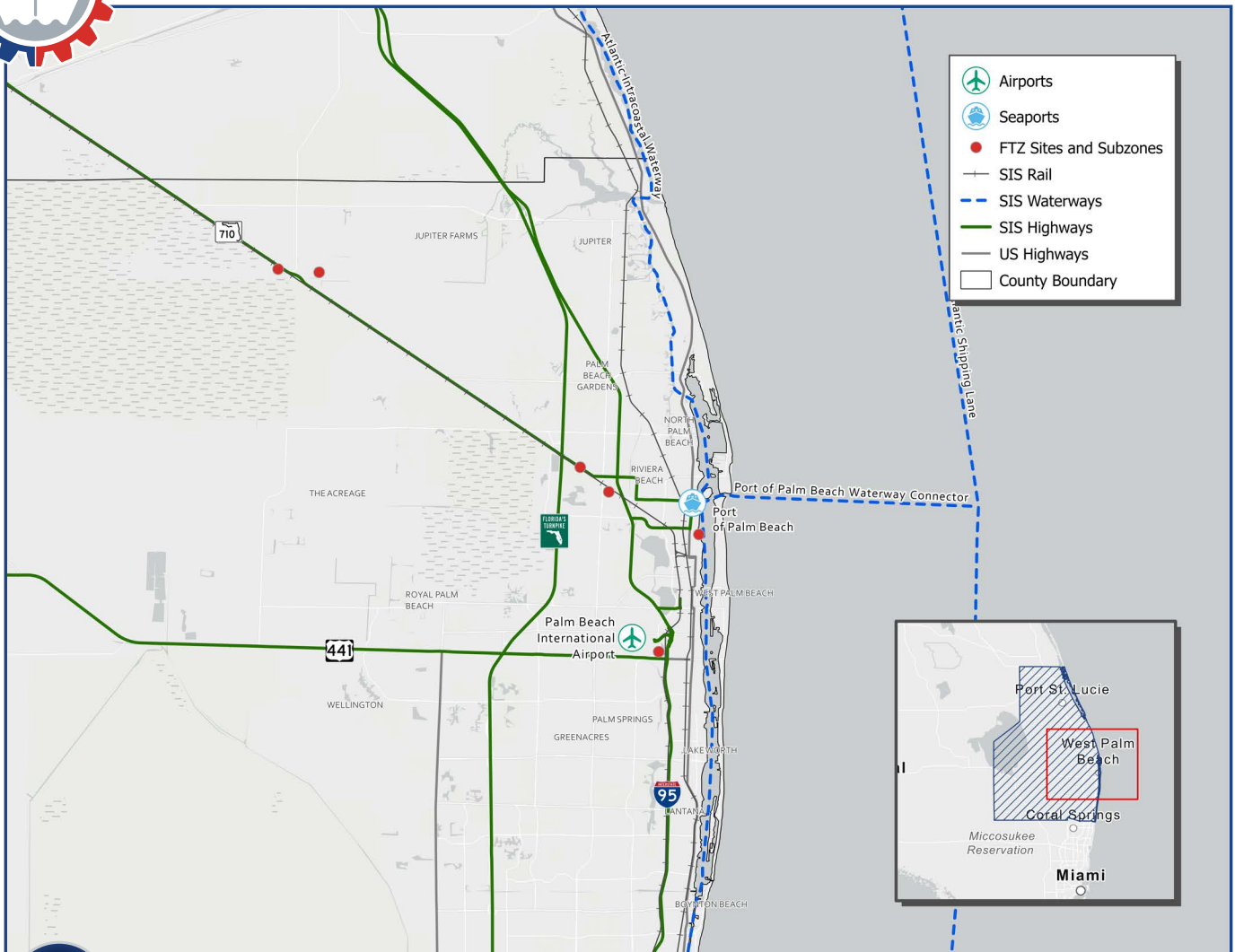
FTZ No. 79 is operated by Port Tampa Bay with a designated service area of 1,626 acres including 166 acres of activated sites and subzones. In 2021, the zone had 3 operators and 2 producers that handled between \$500 to \$750 million in merchandise received and \$5 to \$10 million exported while supporting 251 to 500 direct jobs.

Urban Areas: Tampa, Lakeland

Major Industries: Energy, Dairy, and Electronics

www.tampaftz.com/

NEARBY MAJOR INFRASTRUCTURE
HIGHWAYS I-4, I-75, I-275, US 92, SR 618, SR 60
RAIL CSX
WATERWAYS Gulf of Mexico, Tampa Bay, Gulf Intracoastal
AIRPORT Tampa International
SEAPORT Port Tampa Bay
INTERMODAL CONNECTIONS Tampa CSX Intermodal Terminal



135 PALM BEACH COUNTY FTZ

GRANTEE:

Port of Palm Beach District
 One East 11th Street, Suite 600
 Riviera Beach, Florida 33404

CONTACT INFORMATION

Jackelin Machado
 (561) 383-4139
 jmachado@portofpalmbeach.com

FTZ No. 135 is operated by the Port of Palm Beach with a designated service area of 623 acres. In 2021, the zone had 3 operators that handled between \$1 to \$5 billion in merchandise received and \$1 to \$5 billion exported while supporting 251 to 500 direct jobs.

Urban Areas: West Palm Beach, Jupiter, and Boynton Beach

Major Industries: Food Distribution and Marine Craft

www.portofpalmbeach.com/190/Foreign-Trade-Zone-135

NEARBY MAJOR INFRASTRUCTURE

HIGHWAYS

I-95, Florida's Turnpike, US 1, SR 80, SR 710

RAIL

CSX, FEC

WATERWAYS

Atlantic Ocean, Atlantic Intracoastal

AIRPORT

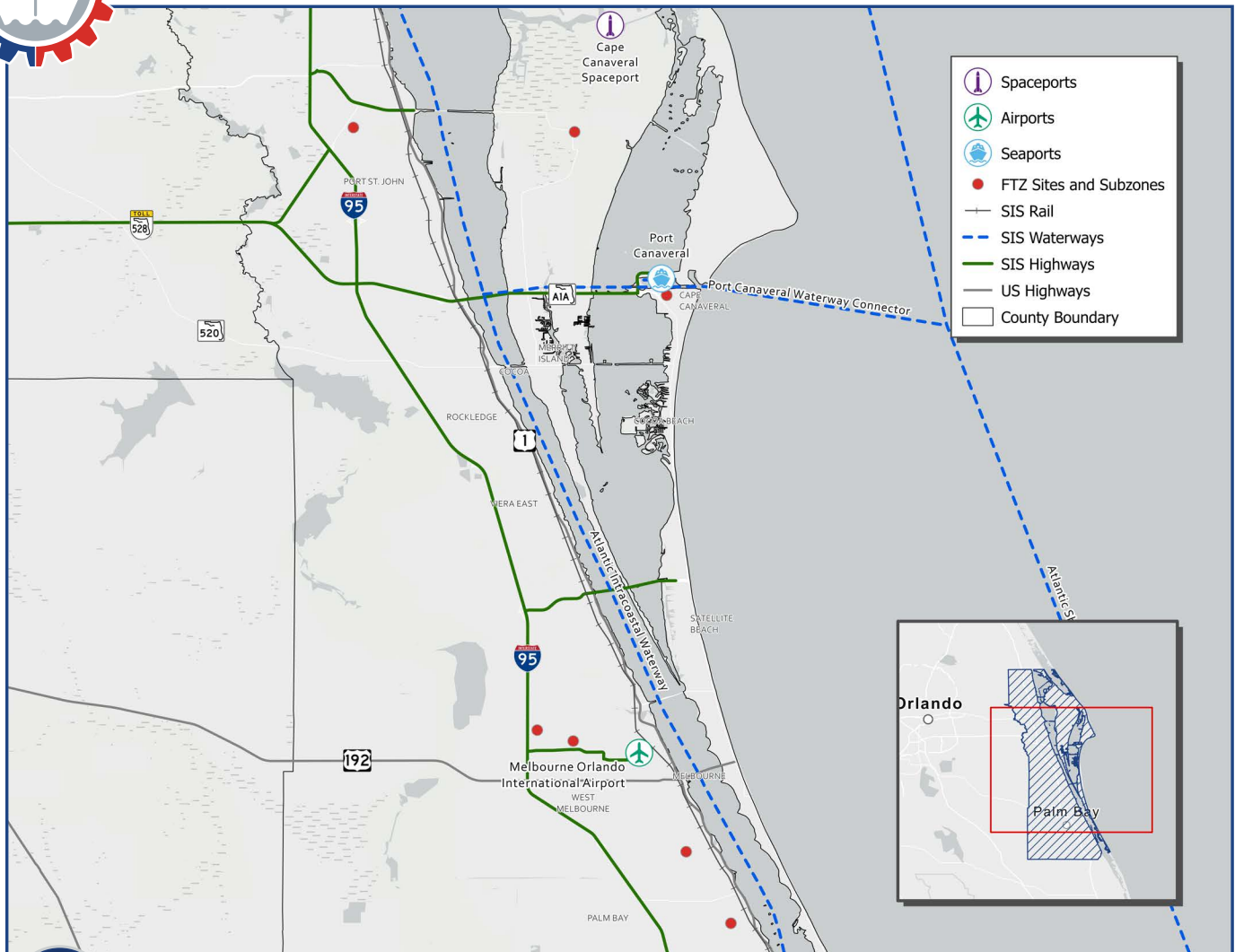
Palm Beach International

SEAPORT

Port of Palm Beach

INTERMODAL CONNECTIONS

N/A



136 BREVARD COUNTY FTZ

GRANTEE:

Canaveral Port Authority
 445 Challenger Rd, Suite 301
 Cape Canaveral, Florida 32920

CONTACT INFORMATION

Jennifer Simmons
 (321) 394-3253
 cpa.ftz136@portcanaveral.com

FTZ No. 136 is operated by the Canaveral Port Authority with a designated service area of 3,104 acres including 50 acres of activated sites and subzones. In 2021, the zone had 2 operators and 1 producer that handled between \$500 to \$750 million in merchandise received and \$250 to \$500 million exported while supporting 151 to 250 direct jobs.

Urban Areas: Cape Canaveral, Cocoa, Cocoa Beach, Melbourne, Merritt Island, Palm Bay, Rockledge, and Titusville

Major Industries: Aerospace Components, Aircraft Manufacturing Machinery, General Merchandise, Marine Engines, Petroleum Products, and Satellites

www.portcanaveral.com/Cargo/Foreign-Trade-Zone-136

NEARBY MAJOR INFRASTRUCTURE

HIGHWAYS

I-95, US 1, US 192, SR 528

RAIL

FEC

WATERWAYS

Atlantic Ocean, Atlantic Intracoastal

AIRPORT

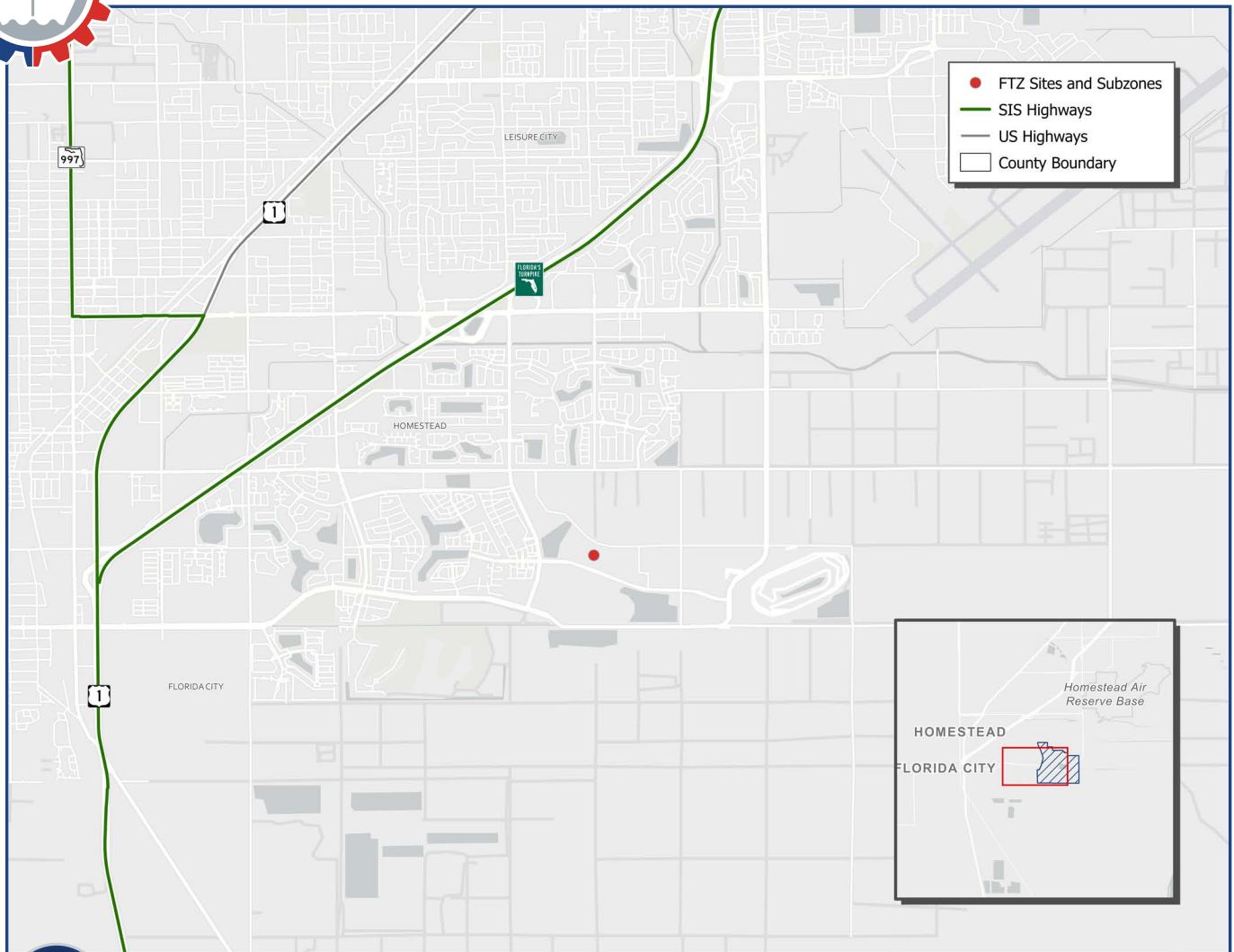
Melbourne-Orlando International, Titusville-Cocoa Airport Authority, Kennedy Space Center

SEAPORT

Port Canaveral

INTERMODAL CONNECTIONS

N/A



166 HOMESTEAD FTZ

GRANTEE:	CONTACT INFORMATION
Vision Foreign-Trade Zone, Inc. 2423 SW 147th Ave. #4008 Miami, Florida, 33185	Monica Blackerby (786) 379-5712 VisionFTZ166@gmail.com

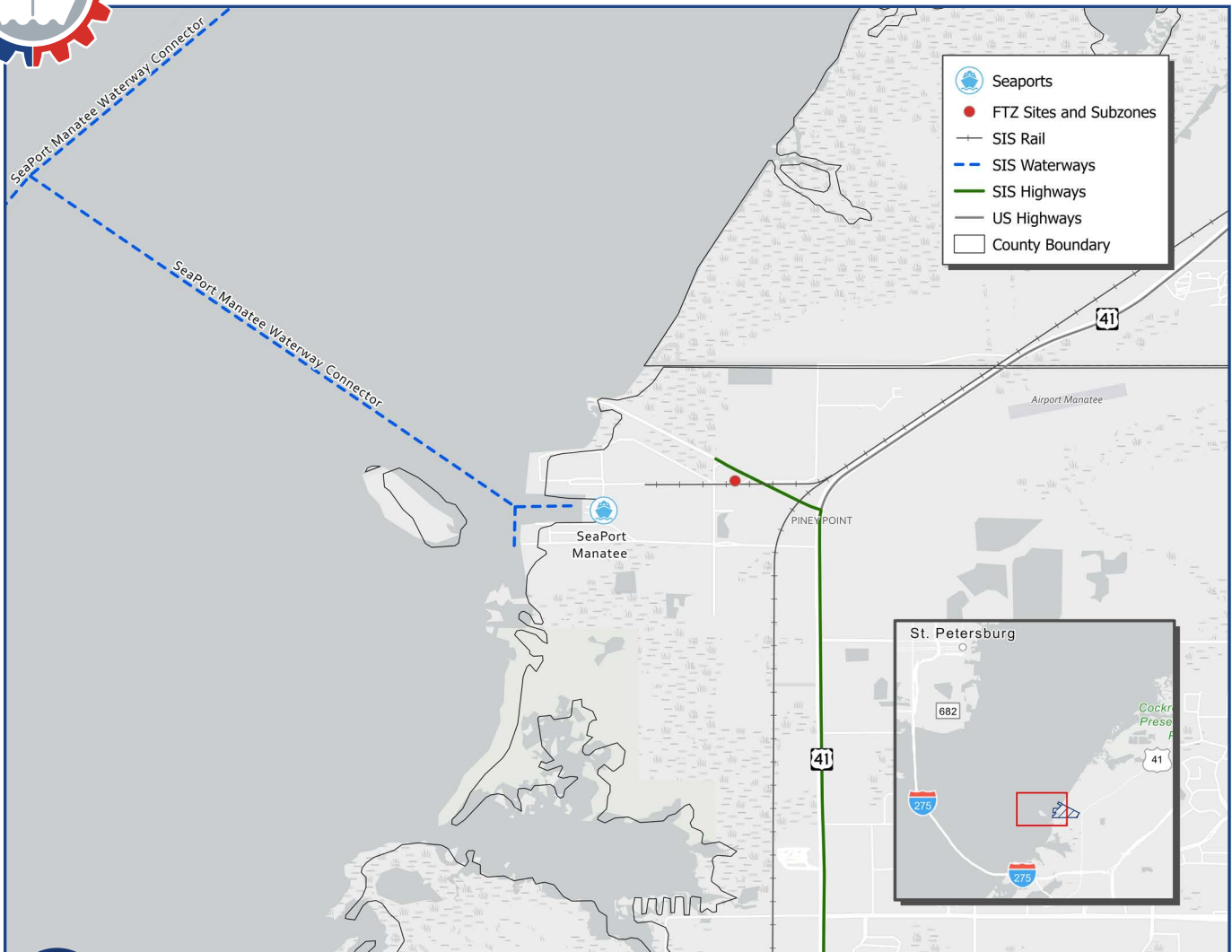
FTZ No. 166 is operated by Vision Foreign-Trade Zone, Inc. with a designated service area of 1,000 acres including 1.5 acres of activated sites and subzones. In 2021, the zone did not handle any merchandise received or exported.

Urban Areas: Miami and Homestead

Major Industries: Recreational Boat

<https://visionftz166.com/>

NEARBY MAJOR INFRASTRUCTURE
HIGHWAYS Florida's Turnpike, US 1, SR 821 (HEFT Extension)
RAIL FEC
WATERWAYS Atlantic Ocean, Atlantic Intracoastal
AIRPORT Miami International, Miami Executive
SEAPORT PortMiami
INTERMODAL CONNECTIONS FEC Hialeah Yard



169 MANATEE COUNTY FTZ

GRANTEE:	CONTACT INFORMATION
Manatee County Port Authority 300 Tampa Bay Way Palmetto, Florida, 34221	Malcolm Edwards (941) 722-6621 ext. 341 medwards@portmanatee.com

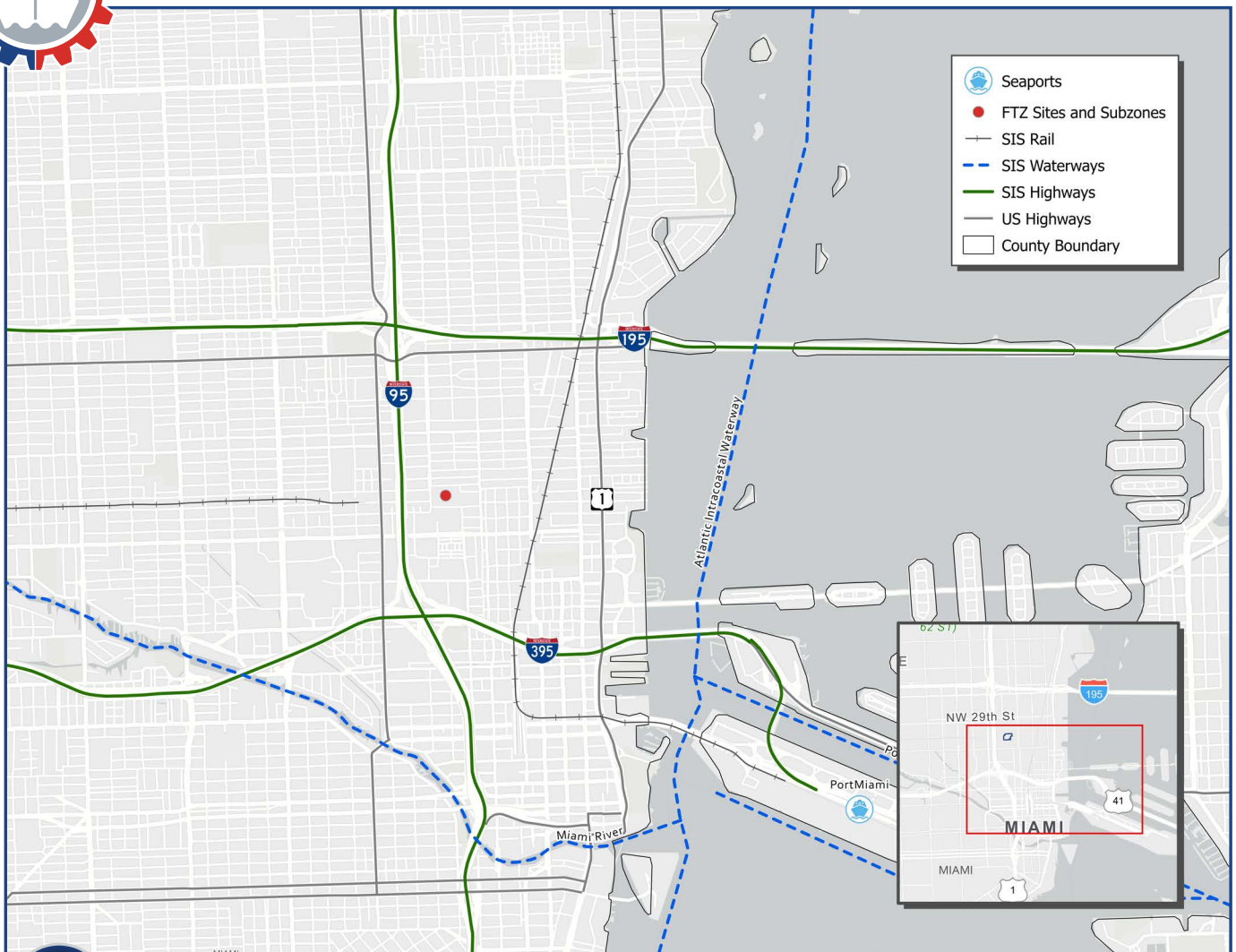
FTZ No. 169 is operated by the Manatee County Port Authority with a designated service area of 815 acres. In 2021, the zone did not handle any merchandise received or exported.

Urban Areas: Bradenton and Sarasota

Major Industries: N/A

www.seaportmanatee.com/business/ftz/#:~:text=With%20benefits%20extending%20throughout%20an,imported%20into%20the%20United%20States

NEARBY MAJOR INFRASTRUCTURE
HIGHWAYS I-75, I-275, US 41, US 301, US 19
RAIL CSX, Seminole Gulf
WATERWAYS Gulf of Mexico, Gulf Intracoastal, Tampa Bay
AIRPORT Sarasota-Bradenton International
SEAPORT SeaPort Manatee
INTERMODAL CONNECTIONS N/A



180 MIAMI (WYNWOOD) FTZ

GRANTEE:	CONTACT INFORMATION
Wynwood Community Economic Development Corp. 8001 Southwest 97 Terrace Miami, Florida 33156	William Rios (305) 274-0992 wrios@worldnet.att.net

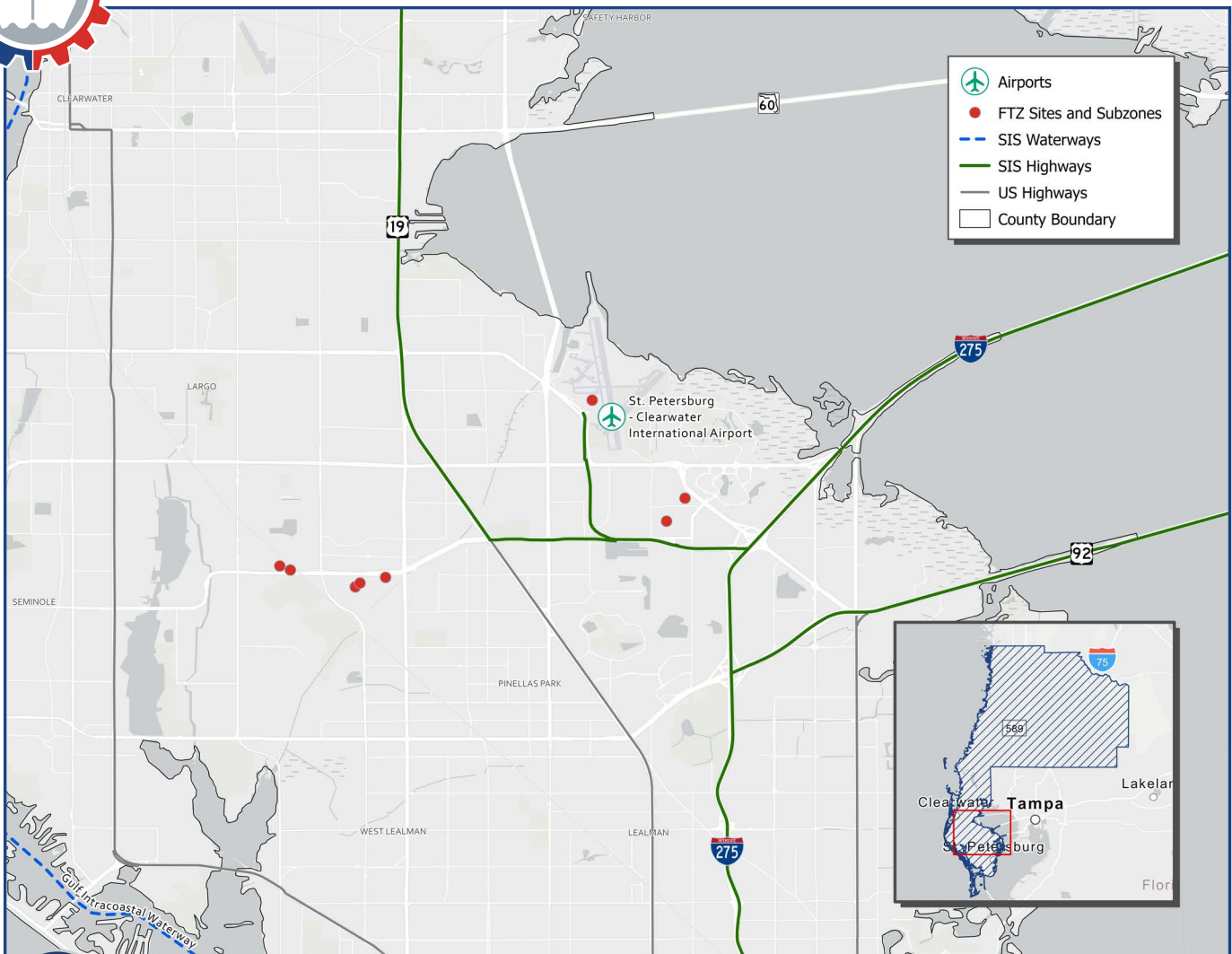
FTZ No. 180 is not currently active.

Urban Areas: N/A

Major Industries: N/A

<https://www.?>

NEARBY MAJOR INFRASTRUCTURE
HIGHWAYS I-95, US 1, I-395, I-195, SR 836
RAIL CSX, FEC
WATERWAYS Atlantic Ocean, Atlantic Intracoastal
AIRPORT Miami International
SEAPORT PortMiami
INTERMODAL CONNECTIONS N/A



193 PINELLAS COUNTY FTZ

GRANTEE:	CONTACT INFORMATION
Pinellas County Economic Development 13805 58th Street N., Suite 1-200 Clearwater, Florida 33760	Brent Barkway (727) 464-7411 bbarkway@pinellascounty.org

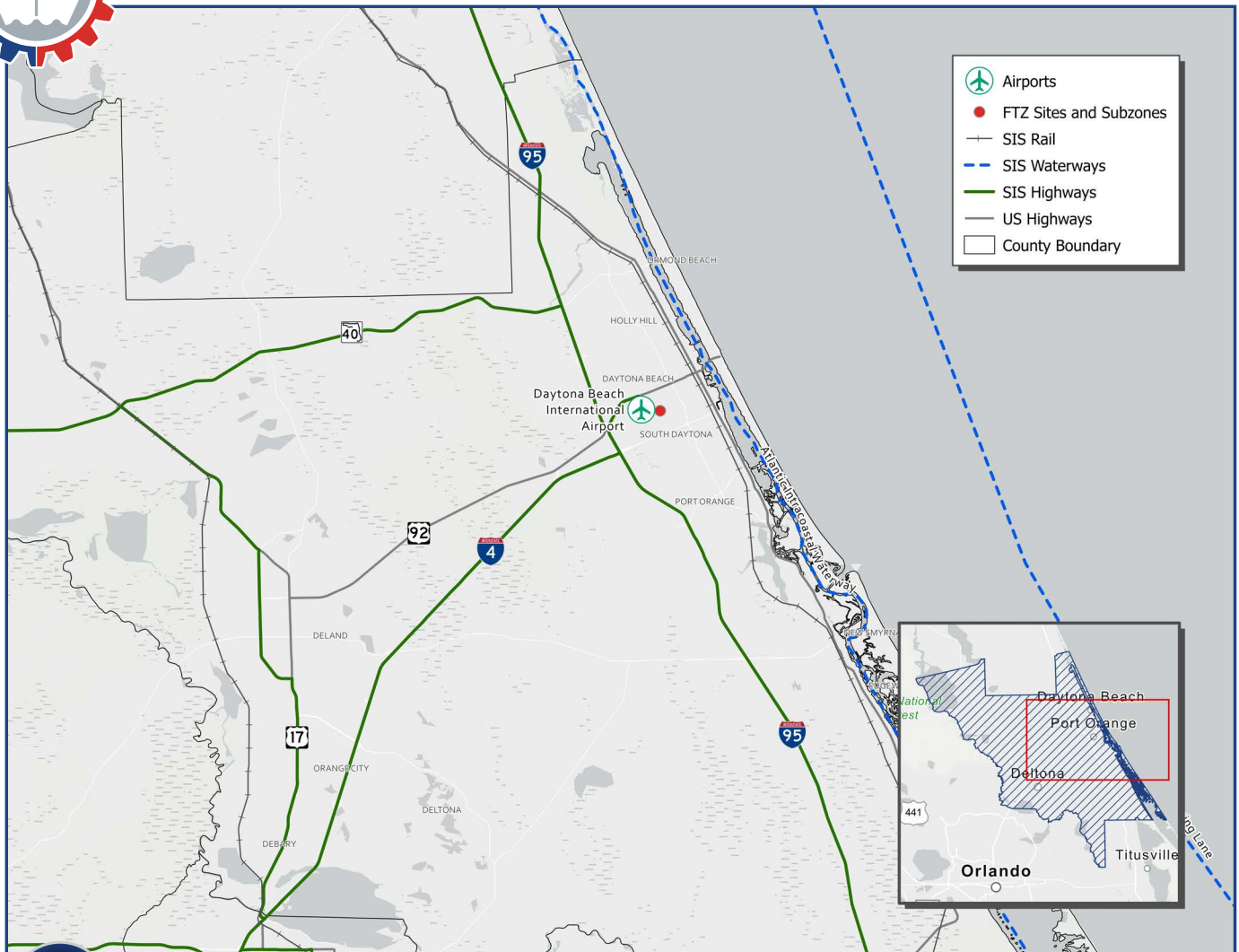
FTZ No. 193 is operated by Pinellas County Economic Development (PCED) with a designated service area of 1,819 acres. In 2021, the zone had 1 operator and 1 producer that handled between \$1 to \$5 billion in merchandise received and \$100 to \$250 million exported while supporting 1,501 to 2,000 direct jobs.

Urban Areas: Clearwater, St. Petersburg, and Largo

Major Industries: Pharmaceuticals

www.pced.org/page/FTZ.html

NEARBY MAJOR INFRASTRUCTURE
HIGHWAYS I-275, US 19
RAIL CSX
WATERWAYS Gulf of Mexico, Gulf Intracoastal, Tampa Bay
AIRPORT St. Petersburg-Clearwater International
SEAPORT Port Tampa Bay
INTERMODAL CONNECTIONS N/A



198 VOLUSIA COUNTY FTZ

GRANTEE:

County of Volusia
 700 Catalina Drive, Suite 200
 Daytona Beach, Florida 32114

CONTACT INFORMATION

Katrina Friel
 (386) 248-8048
 kfriel@volusia.org

FTZ No. 198 is operated by the Volusia County Economic Opportunity office with a designated service area of 1,989 acres. In 2021, the zone did not handle any merchandise received or exported.

Urban Areas: Daytona Beach, Ormond Beach, New Smyrna Beach, and Palm Coast

Major Industries: N/A

www.floridabusiness.org/research-center/ftz.html

NEARBY MAJOR INFRASTRUCTURE

HIGHWAYS

I-95, I-4, US 1, US 92

RAIL

CSX, FEC

WATERWAYS

Atlantic Ocean, Atlantic Intracoastal

AIRPORT

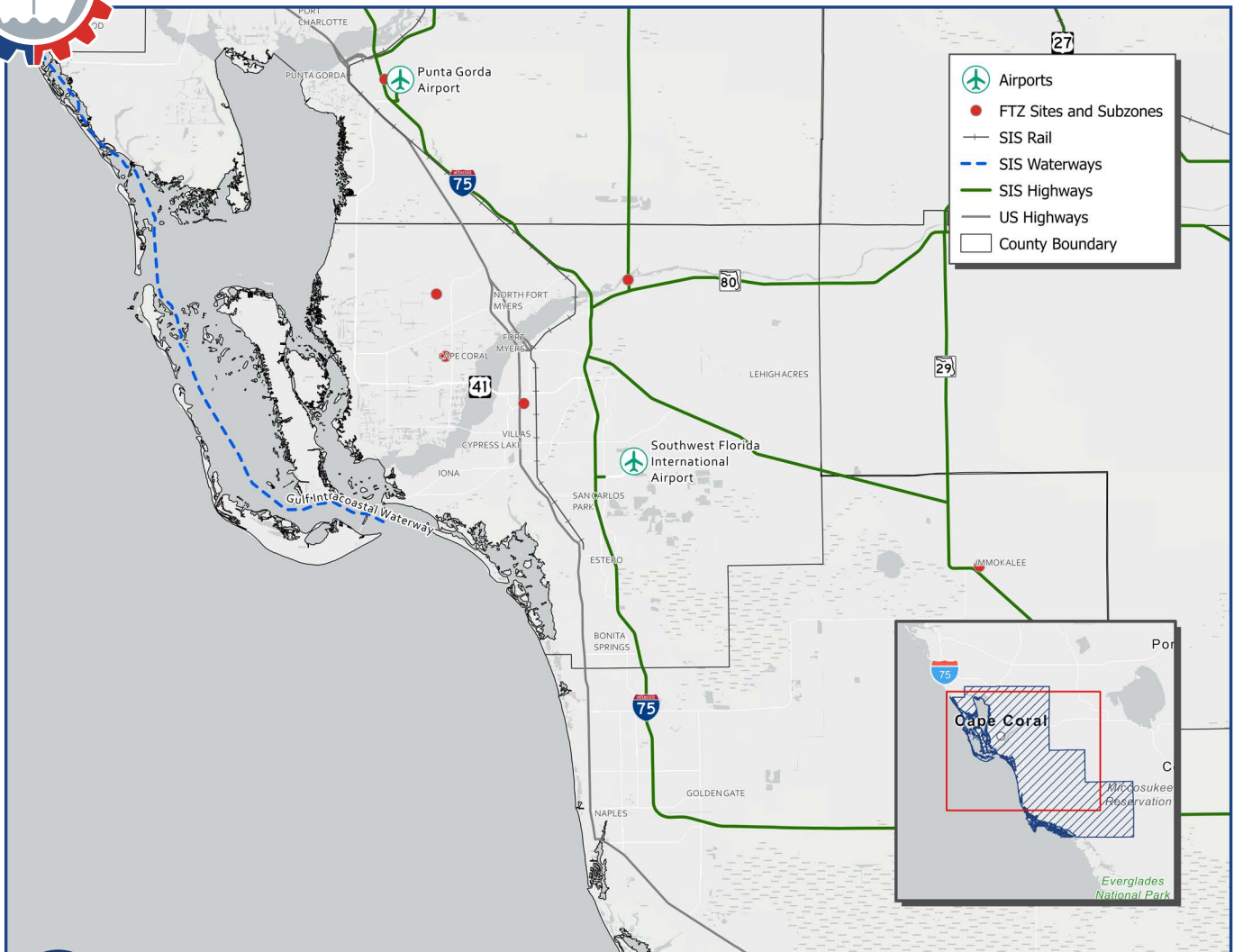
Daytona Beach International, Kennedy Space Center

SEAPORT

Port Canaveral

INTERMODAL CONNECTIONS

N/A



213 FORT MYERS FTZ

GRANTEE:	CONTACT INFORMATION
Lee County Port Authority 11000 Terminal Access Road, Suite 8671 Fort Myers, Florida 33913	Ed Moran (239) 590-4551 ewmoran@flynlcpa.com

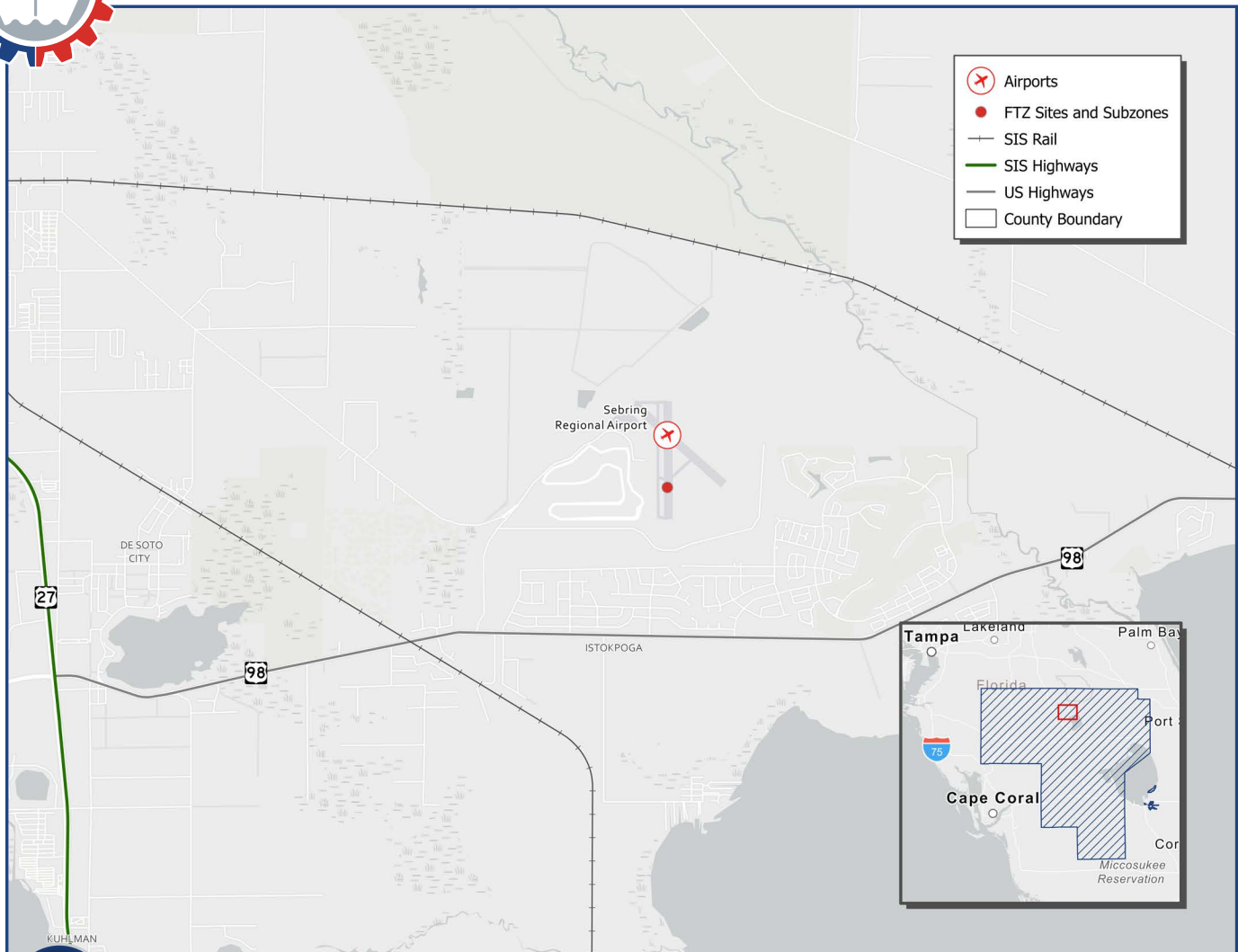
FTZ No. 213 is operated by the Lee County Port Authority with a designated service area of 3,952 acres. In 2021, the zone had 1 operator that handled between \$100 to \$250 million in merchandise received and \$1 to \$5 million exported while supporting 1 to 25 direct jobs.

Urban Areas: Fort Myers, Cape Coral, and Naples

Major Industries: N/A

www.leecountybusiness.com/foreign-trade-zone/

NEARBY MAJOR INFRASTRUCTURE
HIGHWAYS I-75, US 41, SR 80, SR 82
RAIL Seminole Gulf
WATERWAYS Gulf of Mexico, Gulf Intracoastal, Caloosahatchee River
AIRPORT Southwest Florida International
SEAPORT SeaPort Manatee
INTERMODAL CONNECTIONS N/A



- Airports
- FTZ Sites and Subzones
- SIS Rail
- SIS Highways
- US Highways
- County Boundary

215 SEBRING FTZ

GRANTEE:	CONTACT INFORMATION
Sebring Airport Authority 128 Authority Lane Sebring, Florida 33870	Mike Willingham (863) 655-6444 mike@sebring-airport.com

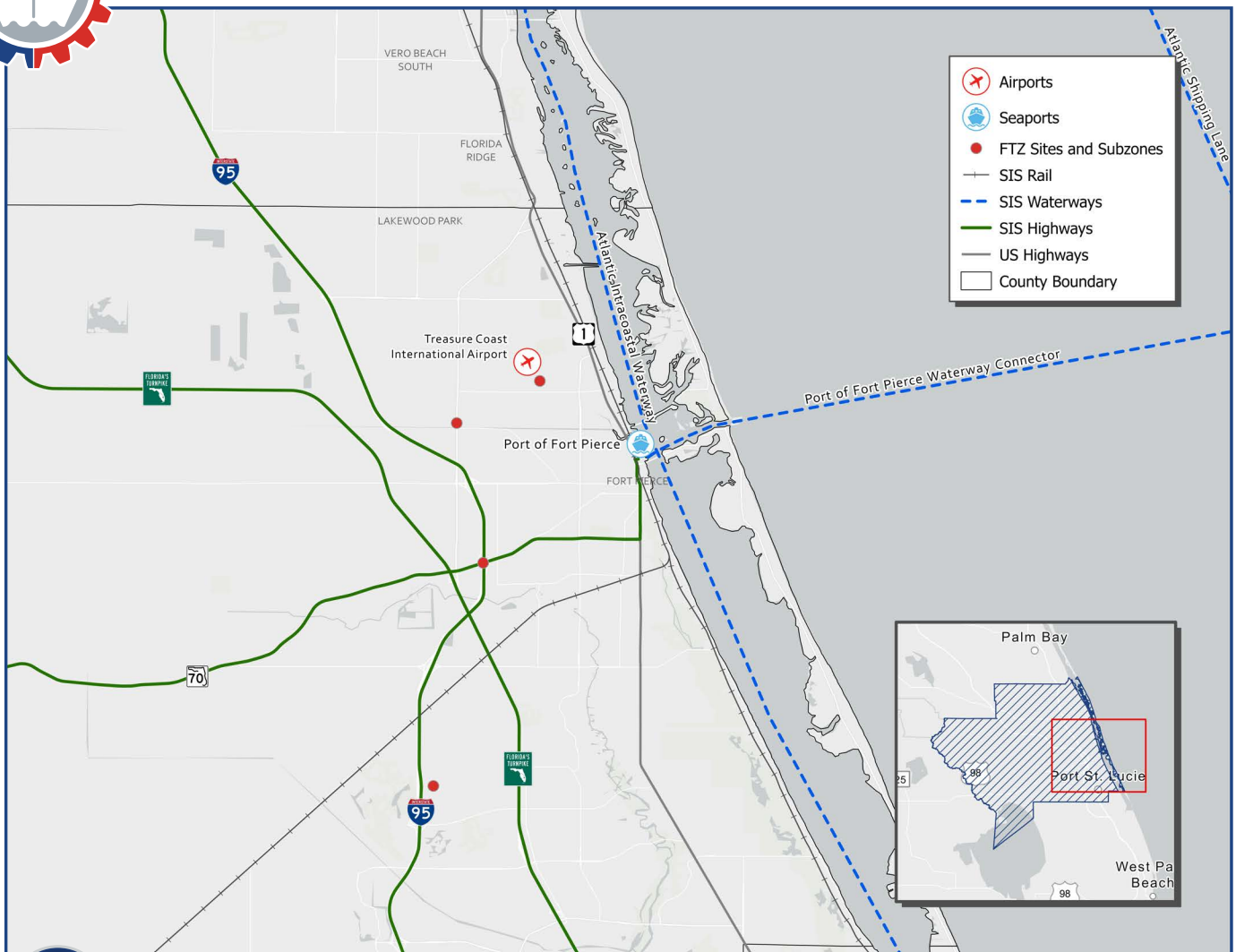
FTZ No. 215 is operated by the Sebring Airport Authority with a designated service area of 2,134 acres. In 2021, the zone did not handle any merchandise received or exported.

Urban Areas: Avon Park, Lake Wales, Okeechobee, and Sebring

Major Industries: Consumer Goods, Electronics, Oil Refining, Motor Vehicles, and Pharmaceuticals

<https://sebring-airport.com/ftz/>

NEARBY MAJOR INFRASTRUCTURE
HIGHWAYS
US 27, US 98, SR 60
RAIL
CSX, South Central Florida Express
WATERWAYS
Lake Okeechobee
AIRPORT
Sebring Regional
SEAPORT
SeaPort Manatee, Port of Fort Pierce
INTERMODAL CONNECTIONS
N/A



218 ST. LUCIE COUNTY FTZ

GRANTEE:

St. Lucie County
 1903 S. 25th Street
 Fort Pierce, Florida 34947

CONTACT INFORMATION

Joshua Revord
 (772) 462-1269
 revordjo@stlucieco.org

FTZ No. 218 is operated by Central Florida Foreign-Trade Zone, Inc. with a designated service area of 2,134 acres. In 2021, the zone did not handle any merchandise received or exported.

Urban Areas: Fort Pierce, Port St. Lucie, and Stuart

Major Industries: Leisure, Hospitality, Transportation, Utilities, and Education & Health Services

www.stlucieco.gov/departments-and-services/management-and-budget/special-taxing-districts

NEARBY MAJOR INFRASTRUCTURE

HIGHWAYS

I-95, Florida's Turnpike,
 US 1, SR 70

RAIL

CSX, FEC

WATERWAYS

Atlantic Ocean, Atlantic Intracoastal

AIRPORT

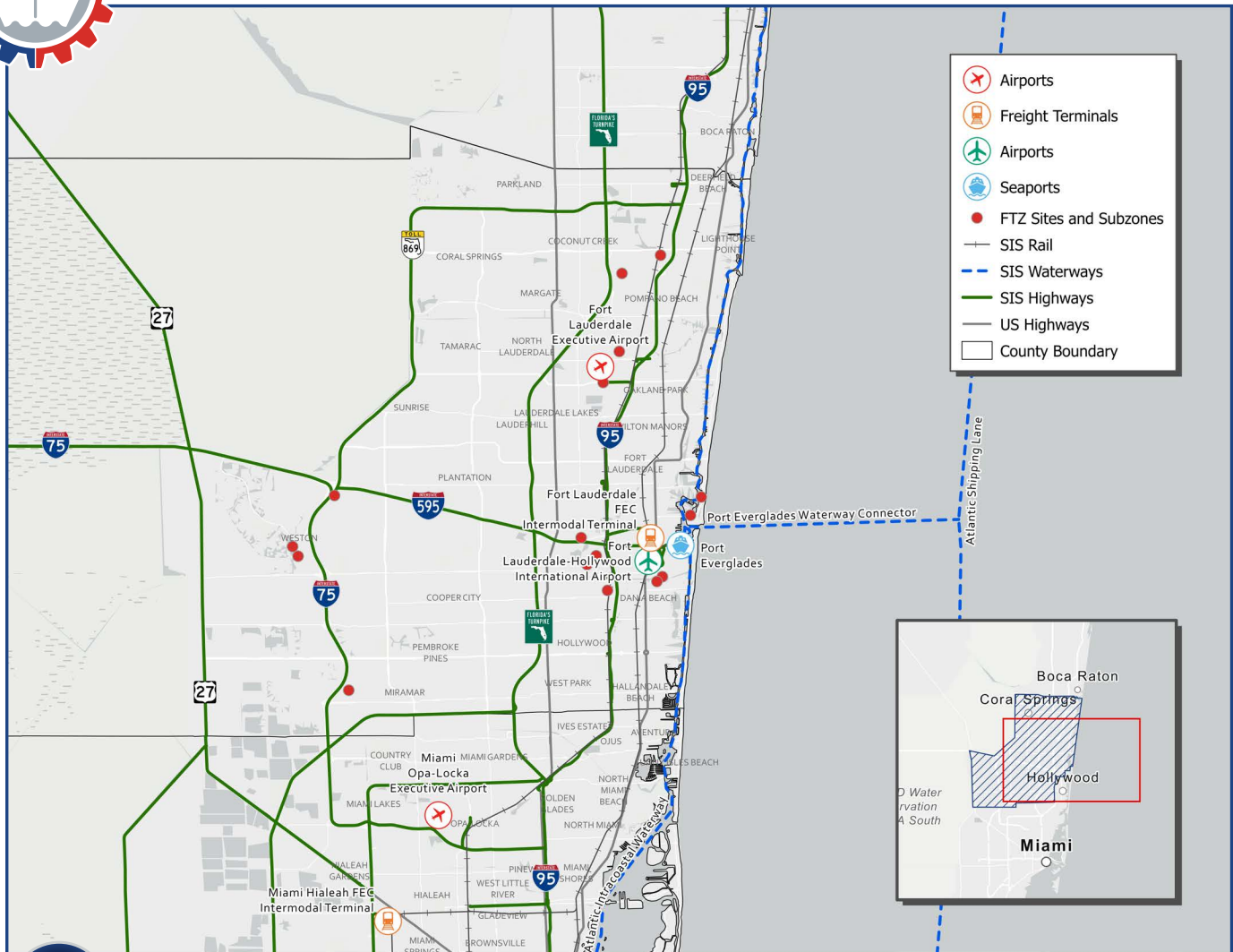
Treasure Coast International

SEAPORT

Port of Fort Pierce

INTERMODAL CONNECTIONS

N/A



241 FORT LAUDERDALE FTZ

GRANTEE:

City of Fort Lauderdale
 6000 NW 21st Avenue
 Ft. Lauderdale, Florida 33309

CONTACT INFORMATION

Krystal Permanan
 (954) 828-4977
 KPermanan@fortlauderdale.gov

FTZ No. 241 is operated by the Fort Lauderdale Executive Airport with a designated service area of 1,027 acres including 133.5 acres of activated sites. In 2021, the zone had 9 operators that handled between \$500 to \$750 million in merchandise received and \$250 to \$500 million exported while supporting 251 to 500 direct jobs.

Urban Areas: Fort Lauderdale and Hollywood

Major Industries: Airplane Manufacturing

www.flyfxe.com/business/ftz-241

NEARBY MAJOR INFRASTRUCTURE

HIGHWAYS

I-95, I-75, I-595, US 1, US 441

RAIL

CSX, FEC

WATERWAYS

Atlantic Ocean, Atlantic Intracoastal

AIRPORT

Fort Lauderdale-Hollywood International, Fort Lauderdale Executive

SEAPORT

Port Everglades

INTERMODAL CONNECTIONS

N/A



249 PENSACOLA FTZ

GRANTEE:	CONTACT INFORMATION
Pensacola-Escambia County Promotion & Economic Development Commission 3 West Garden Street, Suite 618 Pensacola, Florida 32502	Danita Edwards (850) 898-2201 dandrews@floridawesteda.com

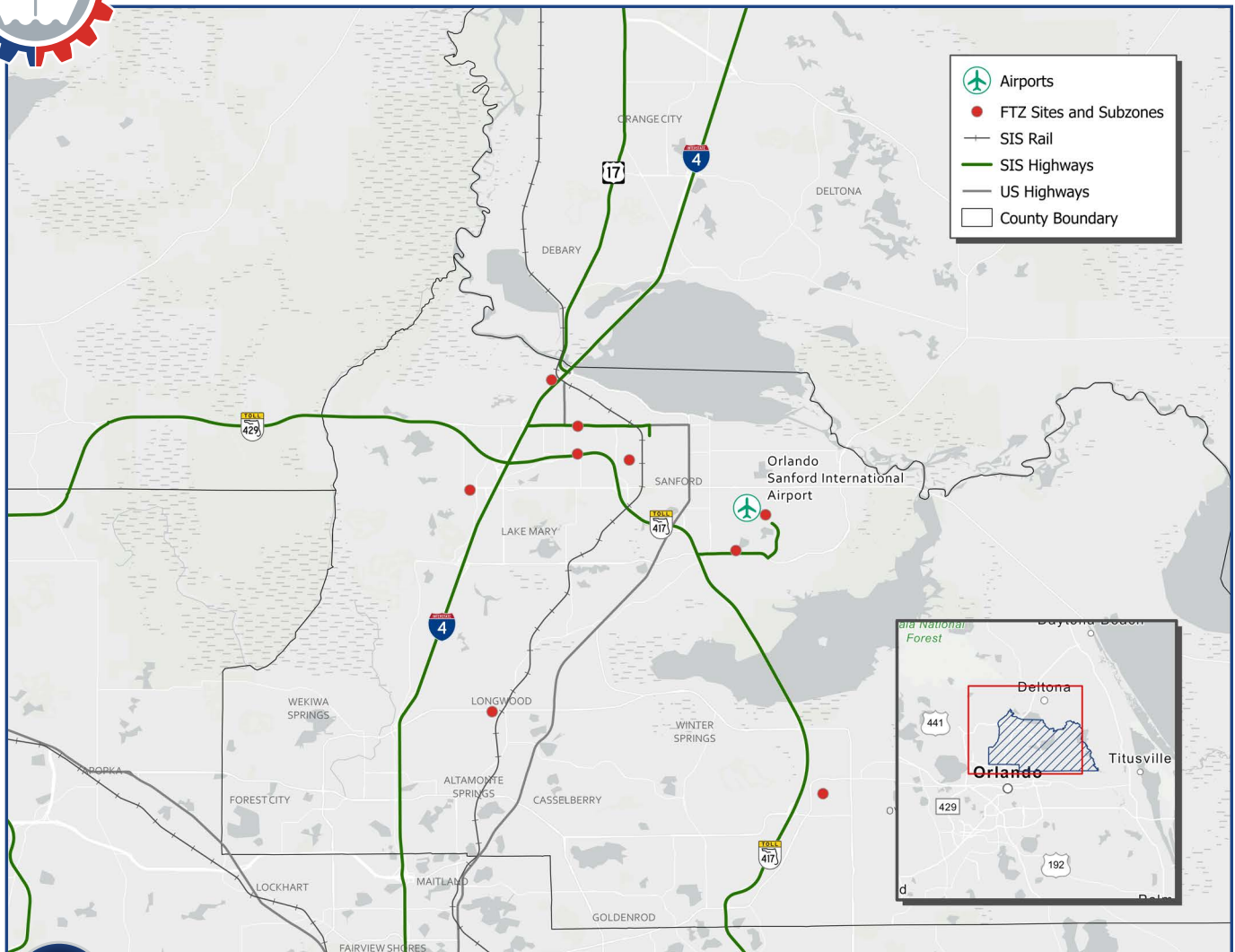
FTZ No. 249 is operated by the Pensacola-Escambia County Promotion & Economic Development Commission (PEDC) with a designated service area of 1,756 acres including 1 acre of activated sites and subzones. In 2021, the zone had 2 operators and 1 producer that handled between \$750 million to \$1 billion in merchandise received while supporting 251 to 500 direct jobs.

Urban Areas: Gulf Breeze and Pensacola

Major Industries: Ship Building and Wind Turbines

www.floridawesteda.com/pedc-application-to-foreign-trade-zones-ftz

NEARBY MAJOR INFRASTRUCTURE
HIGHWAYS I-10, I-110, US 29, US 90
RAIL CSX, Alabama & Gulf Coast
WATERWAYS Gulf of Mexico, Gulf Intracoastal, Caloosahatchee River
AIRPORT Pensacola International
SEAPORT Port of Pensacola
INTERMODAL CONNECTIONS N/A



250 SEMINOLE COUNTY FTZ

GRANTEE:	CONTACT INFORMATION
Sanford Airport Authority 1200 Red Cleveland Blvd Sanford, Florida 32773	Kristina Gilmore (407) 585-4046 kgove@osaa.net

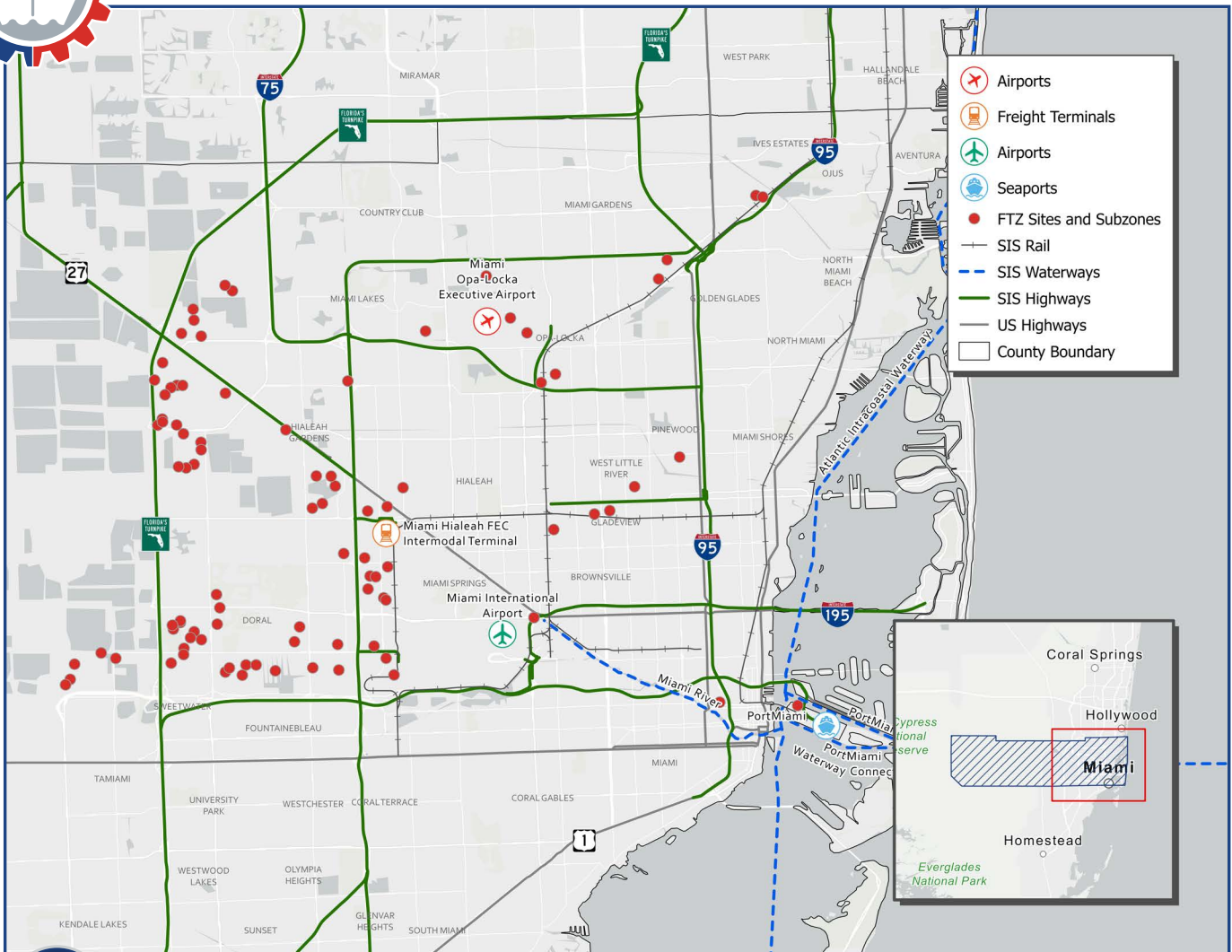
FTZ No. 250 is operated by the Sanford Airport Authority with a designated service area of 2,445.5 acres including 9.5 acres of activated sites. In 2021, the zone had 2 operators that handled between \$25 to \$50 million in merchandise received and \$0 to \$.5 million in exports while supporting 1 to 25 direct jobs.

Urban Areas: Longwood, Sanford, Winter Springs, Lake Mary, and Oviedo

Major Industries: N/A

www.seminolecountyfl.gov/departments-services/county-managers-office/economic-development/business-resources/foreign-trade-zones.html

NEARBY MAJOR INFRASTRUCTURE
HIGHWAYS I-4, US 17, SR 417, SR 429, SR 46
RAIL CSX
WATERWAYS St. John's River
AIRPORT Orlando Sanford International, Orlando Executive
SEAPORT Port Canaveral, Port of Sanford on St. Johns River
INTERMODAL CONNECTIONS N/A



- Airports
- Freight Terminals
- Airports
- Seaports
- FTZ Sites and Subzones
- SIS Rail
- SIS Waterways
- SIS Highways
- US Highways
- County Boundary

281 MIAMI-DADE COUNTY FTZ

GRANTEE:	CONTACT INFORMATION
Miami-Dade County 111 NW 1st St., 29th Floor Miami, Florida 33128	Nimrod Simeon (305) 347-4922 Nimrod.Simeon@miamidade.gov

FTZ No. 281 is operated by PortMiami with a designated service area of 4,931 acres including 78 acres of activated sites and subzones. In 2021, the zone had 63 operators and 1 producer that handled between \$1 to \$5 billion in merchandise received and \$1 to \$5 billion in exports while supporting 1,251 to 1,500 direct jobs.

Urban Areas: Hialeah, Miami, and Miami Beach

Major Industries: Retail Trade, Accommodation and Food Services, and Health Care

www.miamidade.gov/portmiami/foreign-trade-zone-281.asp

NEARBY MAJOR INFRASTRUCTURE
HIGHWAYS I-95, I-75, Florida's Turnpike, I-395, US 1, US 41, SR 836
RAIL CSX, FEC
WATERWAYS Atlantic Ocean, Atlantic Intracoastal
AIRPORT Miami International, Opa-Locka Regional
SEAPORT PortMiami
INTERMODAL CONNECTIONS FEC Hialeah Yard



Lauren Rand

Seaport Office Manager

(850) 414-4551 | lauren.rand@dot.state.fl.us | www.fdot.gov/seaport

Florida Department of Transportation | 605 Suwannee St. MS 68, Tallahassee, FL 32399